

# Integrating Perennial Peanut to Bahiagrass Pastures - Field Day

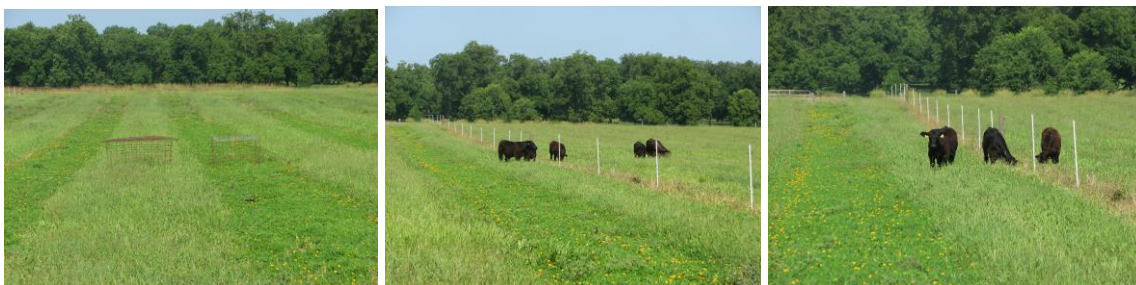
## Friday October 9<sup>th</sup>, 2015

Cherokee Farm, 1525 Fairview Road, Marianna, FL  
&  
UF/IFAS NFREC Marianna, 4925 Highway 162 North, Marianna, FL

### Agenda

9:30 am (CDT)	<b>Registration at Cherokee Farm (\$10 per person/lunch included)</b>
10:00	<b>Welcome:</b> Mr. Mack Glass (producer) and NFREC-Center Director, Nick Comerford
10:10 -11:00	<b><u>Field Tour at Cherokee Farm</u></b> --Strip-planting perennial peanut on bahiagrass pastures --Establishment methods using two different varieties (Ecoturf and Florigraze)
11:00-11:30	Travel to NFREC Marianna, Beef Unit, North of 162
11:30 – 12:15	<b><u>Field Tour at NFREC</u></b> Grazing Trial using strip-planting of perennial peanut
12:15-1:00 pm	<b>Lunch and adjourn</b>

**Evaluation** – please take time to fill this out: We DO listen to you!



**Contact information:** Doug Mayo (UF/IFAS Extension; [demayo@ufl.edu](mailto:demayo@ufl.edu))  
Jose Dubeux (UF/IFAS – NFREC; [dubeux@ufl.edu](mailto:dubeux@ufl.edu))