



Jackson County 2015 Weather Data

63 Years of Weather Data Recorded at the UF/IFAS Marianna North Florida Research and Education Center



Doug Mayo
Jackson County Extension Director

1952-2008 Rainfall Data compiled by
Ed Jowers, Emeritus County Extension Director

Data provided by Florida Automated Weather Station (FAWN)
UF/IFAS North Florida Research and Education Center
Greenwood, Florida



<http://fawn.ifas.ufl.edu/station.php?id=130>

Tower Name	Tower Number	Latitude Degree, Minutes	Latitude Degrees Minutes, Seconds	Latitude Degrees Decimal	Longitude Degree, Minutes	Longitude Degrees Minutes, Seconds	Longitude Degrees Decimal	Elevation Feet
Marianna	130.00	N 30°51.000'	N 30°50'00.00"	N 30.85000°	-85°09.910'	-85°09'54.60"	-85.16516°	115'

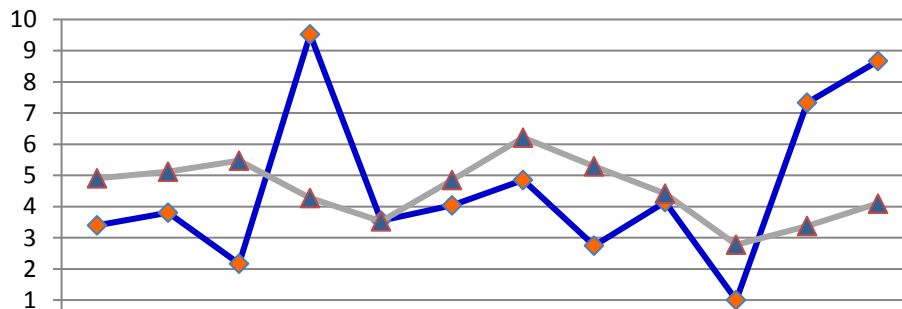
2015 UF/IFAS FAWN Marianna Weather Summary

Month	6' Air Temp			Soil Temp			Rainfall Inches	Dev from 62 yr Avg
	High	Low	Avg	High	Low	Avg		
January	75	19	49	54	33	43	3.4	-1.5
February	74	24	48	51	32	42	3.8	-1.3
March	84	33	63	68	40	55	2.2	-3.3
April	88	49	70	75	56	65	9.5	5.2
May	92	49	75	85	60	72	3.6	0.0
June	97	68	80	91	69	77	4.0	-0.8
July	97	68	82	Bad Sensor			4.9	-1.4
August	96	60	80				2.8	-2.5
September	94	52	76				4.2	-0.3
October	88	43	68	85	65	74	1.0	-1.8
November	86	32	64	81	52	68	7.3	4.0
December	83	31	61	76	46	64	8.7	4.6
2015	97	19	68	91	32		55.2	0.9

Data: UF/IFAS Florida Automated Weather Network Marianna Station

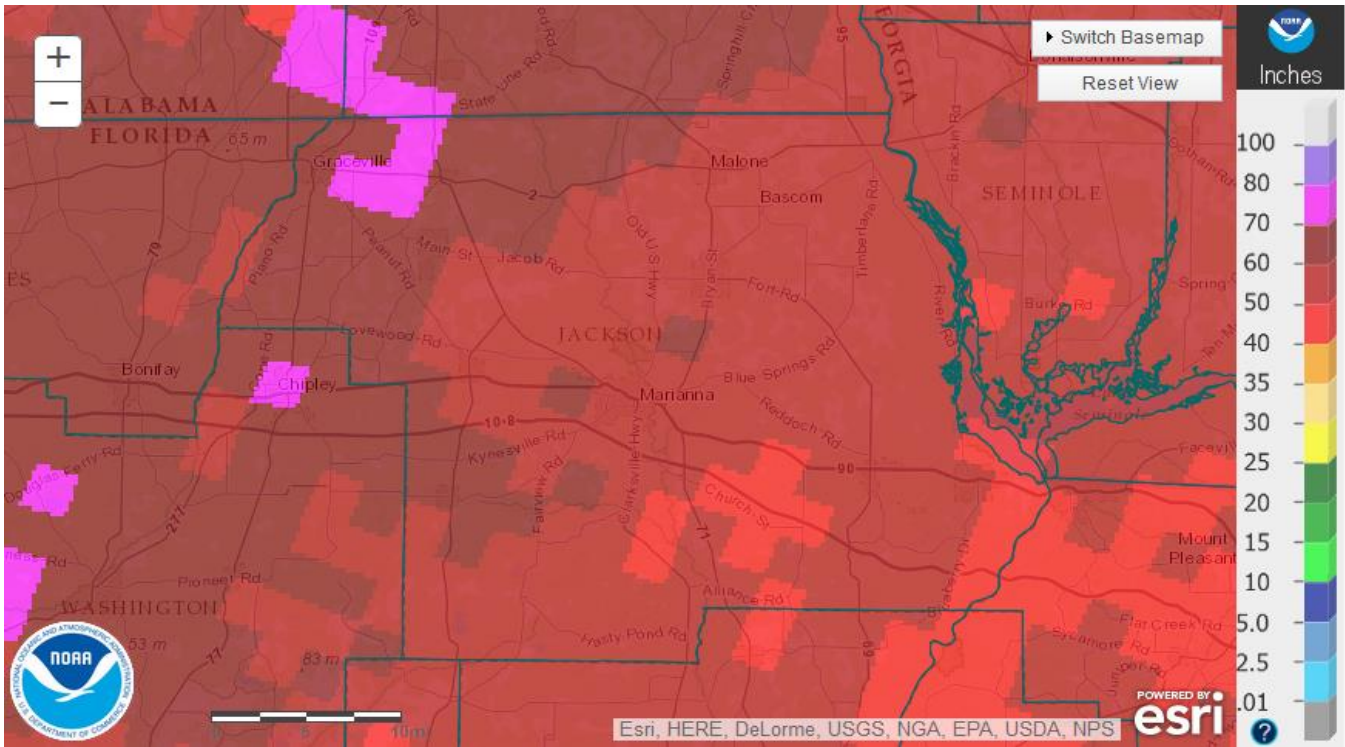
Total days in 2015 <32° 15 Total days in 2015 >95° 17

Monthly Rainfall @ Marianna FAWN

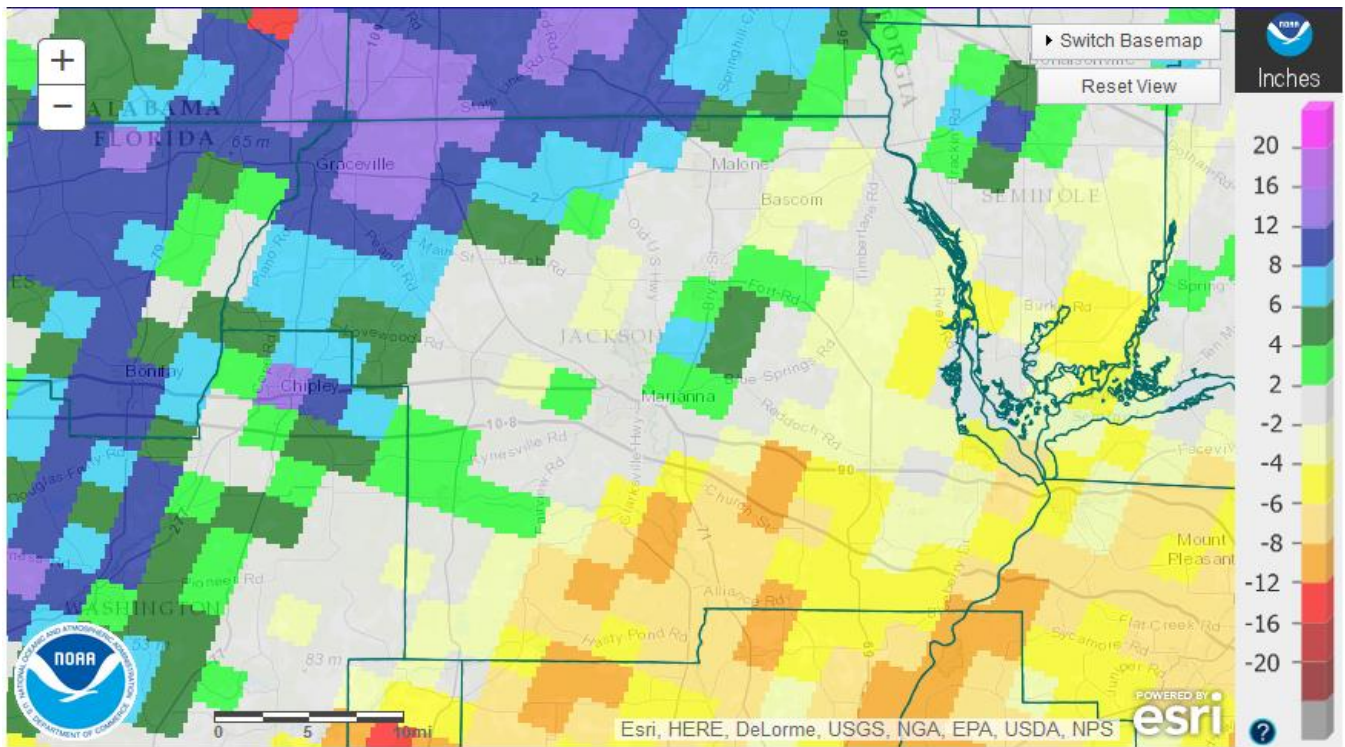


	JAN	FEB	MAR	APR	MAY	JUNE	JULY	AUG	SEP	OCT	NOV	DEC
2015	3.4	3.8	2.17	9.52	3.55	4.04	4.85	2.75	4.15	1.00	7.33	8.67
Historic avg	4.91	5.12	5.47	4.27	3.53	4.85	6.21	5.29	4.41	2.78	3.38	4.10

◆ 2015 ▲ Historic avg



NOAA estimates for total rainfall in 2015



NOAA estimates for annual rainfall departure from normal

January Daily Weather Data

Temperature							Precipitation		
Date	Air Temp 6 ft			Soil Temp 4 inch			Rain	Evapo Trans	
	Avg	Min	Max	Avg	Min	Max	Inches	Inches	
1-Jan-15	49	40	59	46	43	48	0.00	0.04	
2-Jan-15	57	50	62	47	45	49	0.00	0.05	
3-Jan-15	67	60	75	51	49	54	0.00	0.06	
4-Jan-15	63	51	71	52	49	53	1.48	0.06	
5-Jan-15	48	40	56	47	45	50	0.00	0.04	
6-Jan-15	46	34	61	44	41	48	0.00	0.04	
7-Jan-15	44	29	57	42	39	46	0.00	0.04	
8-Jan-15	27	19	38	37	34	40	0.00	0.02	
9-Jan-15	34	24	40	35	33	37	0.00	0.03	
10-Jan-15	41	32	51	37	34	41	0.00	0.03	
11-Jan-15	51	38	62	40	36	43	0.00	0.05	
12-Jan-15	54	50	61	43	42	46	0.00	0.04	
13-Jan-15	55	52	60	45	44	47	0.00	0.04	
14-Jan-15	51	46	54	45	44	46	0.00	0.04	
15-Jan-15	45	43	46	43	42	44	0.28	0.03	
16-Jan-15	45	38	57	42	39	45	0.00	0.04	
17-Jan-15	45	33	61	41	38	44	0.00	0.05	
18-Jan-15	49	37	65	41	38	45	0.00	0.05	
19-Jan-15	49	31	70	41	37	46	0.00	0.05	
20-Jan-15	53	38	69	42	38	47	0.00	0.05	
21-Jan-15	56	44	72	45	42	50	0.00	0.06	
22-Jan-15	56	48	65	45	43	48	0.00	0.05	
23-Jan-15	57	50	62	46	44	47	1.64	0.05	
24-Jan-15	47	37	55	45	41	47	0.00	0.05	
25-Jan-15	49	32	63	42	38	46	0.00	0.06	
26-Jan-15	48	38	54	42	40	44	0.00	0.05	
27-Jan-15	48	35	62	41	37	45	0.00	0.06	
28-Jan-15	43	35	56	41	37	45	0.00	0.05	
29-Jan-15	50	33	67	42	37	46	0.00	0.06	
30-Jan-15	52	45	59	43	41	47	0.00	0.06	
31-Jan-15	46	32	62	42	38	46	0.00	0.06	
High			75			54			
Low		19			33				
Average	49	39	60	43	40	46			
Days over 95 ^o	0			Total for Month		3.40	1.46	3.4	1.5
				Number of Rain Days		3.00		3.0	
				Historic Average		4.91		4.9	
Days below 32 ^o	5			Deviation from Average		-1.51		-1.5	
				Net Gain/loss (Rain - ET)			1.94		1.9

Year Cumulative
Rain **ET**
3.4 1.5
3.0
4.9
-1.5
1.9

February Daily Weather Data

Date	Temperature						Precipitation	
	Air Temp 6 ft			Soil Temp 4 inch			Rain	Evapo Trans
	Avg	Min	Max	Avg	Min	Max	Inches	Inches
1-Feb-15	55	41	68	43	39	46	0.47	0.07
2-Feb-15	51	36	64	45	41	47	0.02	0.07
3-Feb-15	40	30	51	40	37	44	0.00	0.05
4-Feb-15	45	42	48	41	40	42	0.91	0.04
5-Feb-15	50	41	60	42	40	46	0.10	0.07
6-Feb-15	44	31	58	41	37	45	0.00	0.06
7-Feb-15	48	31	68	42	37	47	0.00	0.07
8-Feb-15	54	35	71	43	38	49	0.00	0.08
9-Feb-15	59	48	70	45	43	49	0.31	0.07
10-Feb-15	48	39	57	44	42	46	0.00	0.06
11-Feb-15	49	33	66	43	38	49	0.02	0.07
12-Feb-15	51	38	64	44	41	48	0.00	0.08
13-Feb-15	38	29	49	41	37	45	0.00	0.06
14-Feb-15	48	28	65	41	37	46	0.00	0.08
15-Feb-15	52	41	61	44	40	48	0.00	0.07
16-Feb-15	58	46	69	44	42	47	0.04	0.07
17-Feb-15	44	34	66	44	39	47	0.52	0.07
18-Feb-15	40	29	52	39	36	43	0.00	0.07
19-Feb-15	33	27	41	37	33	41	0.00	0.05
20-Feb-15	36	24	51	37	32	41	0.00	0.06
21-Feb-15	53	37	69	40	35	45	0.00	0.09
22-Feb-15	66	57	74	47	43	51	0.04	0.08
23-Feb-15	58	47	64	49	46	51	0.00	0.07
24-Feb-15	46	43	50	45	43	46	0.10	0.05
25-Feb-15	45	43	48	42	41	43	1.26	0.04
26-Feb-15	43	40	47	41	40	43	0.01	0.05
27-Feb-15	46	36	56	41	37	46	0.00	0.07
28-Feb-15	46	41	49	41	40	42	0.00	0.04
High			74			51		
Low		24			32			
Average	48	37	59	42	39	46		
Days over 95 ^o			0	Total for Month			3.80	1.81
				Number of Rain Days			12.00	
Days below 32 ^o			8	Historic Average			5.12	
				Deviation from Average			-1.32	
				Net Gain/loss (Rain - ET)				1.99

Year Cumulative	
Rain	ET
7.2	3.3
15.0	
10.0	
-2.8	
	3.9

April Daily Weather Data

Date	Temperature						Precipitation			
	Air Temp 6 ft			Soil Temp 4 inch			Rain	Evapo Trans		
	Avg	Min	Max	Avg	Min	Max	Inches	Inches		
1-Apr-15	72	62	84	61	57	67	0.00	0.15		
2-Apr-15	70	60	83	63	59	67	0.00	0.13		
3-Apr-15	69	56	82	63	59	69	0.00	0.14		
4-Apr-15	69	57	77	63	60	66	0.00	0.1		
5-Apr-15	66	49	78	61	56	67	0.00	0.13		
6-Apr-15	71	65	80	63	61	67	0.00	0.11		
7-Apr-15	74	64	87	66	61	71	0.00	0.15		
8-Apr-15	75	61	88	68	62	74	0.00	0.16		
9-Apr-15	74	62	86	68	64	73	0.00	0.14		
10-Apr-15	75	67	85	68	65	72	0.20	0.12		
11-Apr-15	70	66	79	68	65	71	0.04	0.1		
12-Apr-15	69	65	76	66	64	68	1.68	0.07		
13-Apr-15	71	68	76	65	64	67	0.22	0.07		
14-Apr-15	73	69	83	66	64	69	2.30	0.1		
15-Apr-15	74	67	82	67	64	71	0.03	0.12		
16-Apr-15	69	65	76	65	63	68	1.44	0.08		
17-Apr-15	68	64	72	64	63	66	0.92	0.07		
18-Apr-15	72	66	79	65	63	69	0.01	0.1		
19-Apr-15	71	66	76	65	63	66	1.15	0.08		
20-Apr-15	69	64	76	63	61	65	0.00	0.08		
21-Apr-15	66	54	76	64	59	70	0.00	0.15		
22-Apr-15	69	56	83	66	60	72	0.00	0.16		
23-Apr-15	73	59	86	68	62	74	0.00	0.16		
24-Apr-15	73	62	83	69	64	75	0.00	0.16		
25-Apr-15	71	65	83	67	65	70	1.18	0.1		
26-Apr-15	75	65	86	69	63	75	0.00	0.17		
27-Apr-15	67	65	69	66	64	68	0.00	0.06		
28-Apr-15	67	63	72	64	63	66	0.17	0.07		
29-Apr-15	65	57	75	65	62	69	0.18	0.11		
30-Apr-15	65	54	76	64	59	70	0.00	0.15		
High			88			75				
Low		49			56					
Average	70	62	80	65	62	69				
Days over 95 ⁰			0	Total for Month			9.52	3.49	18.9	9.7
				Number of Rain Days			13.00		37.0	
				Historic Average			4.27		19.8	
Days below 32 ⁰		0		Deviation from Average			5.25		-0.9	
				Net Gain/loss (Rain - ET)				6.03		9.2

Year Cumulative

Rain	ET
18.9	9.7
37.0	
19.8	
-0.9	
	9.2

June Daily Weather Data

Temperature							Precipitation			
Date	Air Temp 6 ft			Soil Temp 4 inch			Rain	Evapo Trans		
	Avg	Min	Max	Avg	Min	Max	Inches	Inches		
1-Jun-15	74	69	84	73	70	77	0.14	0.12		
2-Jun-15	75	69	84	72	69	76	0.00	0.14		
3-Jun-15	77	68	88	74	69	80	0.62	0.19		
4-Jun-15	77	70	86	74	69	81	0.00	0.17		
5-Jun-15	80	69	90	75	70	81	0.00	0.18		
6-Jun-15	81	69	91	76	71	82	0.00	0.2		
7-Jun-15	81	71	92	77	72	83	0.00	0.2		
8-Jun-15	80	73	90	77	73	82	0.00	0.18		
9-Jun-15	76	72	84	74	72	77	0.07	0.1		
10-Jun-15	75	68	85	73	70	77	0.44	0.13		
11-Jun-15	75	68	86	72	69	78	0.11	0.15		
12-Jun-15	79	71	89	74	69	79	0.01	0.18		
13-Jun-15	80	72	91	76	71	81	0.00	0.17		
14-Jun-15	82	71	93	77	72	84	0.00	0.21		
15-Jun-15	83	71	95	78	73	84	0.00	0.21		
16-Jun-15	82	72	95	79	73	85	0.00	0.2		
17-Jun-15	84	74	96	80	74	86	0.00	0.2		
18-Jun-15	84	75	95	81	75	88	0.00	0.2		
19-Jun-15	83	73	93	81	75	87	0.00	0.2		
20-Jun-15	84	74	93	81	76	87	0.00	0.2		
21-Jun-15	83	75	95	82	76	89	0.00	0.2		
22-Jun-15	84	74	97	82	76	91	0.00	0.2		
23-Jun-15	80	73	95	81	77	87	0.00	0.15		
24-Jun-15	82	73	92	80	75	87	0.01	0.18		
25-Jun-15	82	74	92	81	76	87	0.00	0.19		
26-Jun-15	80	74	86	79	76	81	0.00	0.12		
27-Jun-15	79	73	88	76	73	80	0.37	0.14		
28-Jun-15	77	72	84	73	71	77	0.83	N/A		
29-Jun-15	79	70	88	74	69	80	0.01	0.17		
30-Jun-15	75	68	86	72	69	75	1.43	0.11		
High			97			91				
Low		68			69					
Average	80	71	90	77	72	82				
Days over 95 ^o			7	Total for Month			4.04	4.99	26.5	19.8
Days of 100 ^o			0	Number of Rain Days			11.00		54.0	
Days below 32 ^o		0		Historic Average			4.85		28.2	
				Deviation from Average			-0.81		-1.7	
				Net Gain/loss (Rain - ET)				-0.95		6.7

Year Cumulative	
Rain	ET
26.5	19.8
54.0	
28.2	
-1.7	
	6.7

July Daily Weather Data

Date	Temperature						Precipitation	
	Air Temp 6 ft			Soil Temp 4 inch			Rain	Evapo Trans
	Avg	Min	Max	Avg	Min	Max	Inches	Inches
1-Jul-15	80	68	90	73	67	80	0.00	0.2
2-Jul-15	76	71	87	72	70	76	0.87	0.11
3-Jul-15	82	74	92	74	69	80	0.00	0.19
4-Jul-15	78	70	88	74	71	77	0.47	0.13
5-Jul-15	72	69	79	70	69	72	0.55	0.08
6-Jul-15	78	69	87	73	68	78	0.00	0.17
7-Jul-15	82	71	92	76	70	82	0.00	0.2
8-Jul-15	79	72	93	76	72	83	0.44	0.17
9-Jul-15	80	71	91	77	71	83	0.01	0.2
10-Jul-15	82	72	93	78	72	84	0.00	0.21
11-Jul-15	84	74	94	<i>Bad Soil Temperature Sensor</i>			0.00	0.2
12-Jul-15	86	75	97				0.00	0.22
13-Jul-15	83	75	94				0.00	0.19
14-Jul-15	83	76	94				0.00	0.18
15-Jul-15	86	78	94				0.00	0.21
16-Jul-15	82	75	94				0.37	0.19
17-Jul-15	84	75	96				0.00	0.19
18-Jul-15	85	75	96				0.00	0.21
19-Jul-15	80	72	95				0.60	0.14
20-Jul-15	83	73	95				0.00	0.2
21-Jul-15	84	75	96				0.00	0.2
22-Jul-15	83	74	96				0.00	0.18
23-Jul-15	82	76	95				0.32	0.17
24-Jul-15	80	73	92				0.94	0.16
25-Jul-15	81	72	90				0.00	0.18
26-Jul-15	81	72	91				0.00	0.2
27-Jul-15	83	71	94				0.00	0.2
28-Jul-15	85	74	97				0.00	0.2
29-Jul-15	84	77	97				0.07	0.19
30-Jul-15	82	75	94				0.02	0.17
31-Jul-15	81	72	94				0.19	0.18
High			97			84		
Low		68			67			
Average	82	73	93	74	70	79		
				Total for Month		4.85	5.62	
Days over 95 ^o				8	Number of Rain Days		12.00	
Days of 100 ^o				0	Historic Average		6.21	
Days below 32 ^o				0	Deviation from Average		-1.36	
				Net Gain/loss (Rain - ET)			-0.77	

Year Cumulative	
Rain	ET
31.3	25.4
66.0	
34.4	
-3.0	
	6.0

August Daily Weather Data

Date	Temperature						Precipitation		
	Air Temp 6 ft			Soil Temp 4 inch			Rain	Evapo Trans	
	Avg	Min	Max	Avg	Min	Max	Inches	Inches	
1-Aug-15	80	72	91				0.01	0.17	
2-Aug-15	80	72	90				0.00	0.15	
3-Aug-15	83	74	96				0.04	0.19	
4-Aug-15	82	75	95				0.00	0.19	
5-Aug-15	80	74	88				0.00	0.14	
6-Aug-15	81	76	89				0.06	0.13	
7-Aug-15	82	74	95				0.16	0.16	
8-Aug-15	81	74	93				0.54	0.18	
9-Aug-15	83	74	95				0.01	0.2	
10-Aug-15	84	75	94				0.00	0.19	
11-Aug-15	83	75	94				0.00	0.17	
12-Aug-15	84	76	94				0.00	0.2	
13-Aug-15	81	69	94				0.00	0.2	
14-Aug-15	79	72	91				0.05	0.17	
15-Aug-15	80	71	90				0.00	0.16	
16-Aug-15	78	72	87				0.00	0.12	
17-Aug-15	76	73	84				0.03	0.08	
18-Aug-15	78	71	87				0.53	0.11	
19-Aug-15	80	75	89				0.86	0.12	
20-Aug-15	81	74	91				0.00	0.18	
21-Aug-15	81	73	94				0.03	0.18	
22-Aug-15	83	72	95				0.00	0.18	
23-Aug-15	84	76	94				0.00	0.19	
24-Aug-15	83	73	93				0.00	0.18	
25-Aug-15	81	70	90				0.00	0.17	
26-Aug-15	74	62	87				0.00	0.16	
27-Aug-15	76	60	92				0.00	0.16	
28-Aug-15	77	67	89				0.20	0.13	
29-Aug-15	74	71	84				0.23	0.09	
30-Aug-15	78	70	89				0.00	0.17	
31-Aug-15	78	68	91				0.00	0.15	
High			96			0			
Low		60			0				
Average	80	72	91	#####	#DIV/0!	#####			
				Total for Month			2.75	4.97	
Days over 95 ^o				2			Number of Rain Days		13.00
Days of 100 ^o				0			Historic Average		5.29
Days below 32 ^o				0			Deviation from Average		-2.54
				Net Gain/loss (Rain - ET)			-2.22		

Year Cumulative	
Rain	ET
34.1	30.3
79.0	
39.7	
-5.6	
	3.7

September Daily Weather Data

Date	Temperature						Precipitation		
	Air Temp 6 ft			Soil Temp 4 inch			Rain	Evapo Trans	
	Avg	Min	Max	Avg	Min	Max	Inches	Inches	
1-Sep-15	81	68	94				0.00	0.16	
2-Sep-15	82	72	94				0.00	0.17	
3-Sep-15	79	71	93				0.00	0.12	
4-Sep-15	79	70	93				0.07	0.15	
5-Sep-15	80	72	93				0.00	0.17	
6-Sep-15	77	69	90				0.00	0.14	
7-Sep-15	78	69	89				0.00	0.15	
8-Sep-15	77	72	86				0.05	0.11	
9-Sep-15	79	70	94				0.01	0.15	
10-Sep-15	79	71	91				0.29	0.14	
11-Sep-15	77	71	83				0.00	0.09	
12-Sep-15	74	69	80				0.30	0.08	
13-Sep-15	68	58	79				0.00	0.14	
14-Sep-15	68	52	84				0.00	0.13	
15-Sep-15	73	62	85				0.00	0.11	
16-Sep-15	75	68	84				0.00	0.11	
17-Sep-15	76	68	87				0.00	0.14	
18-Sep-15	77	67	88				0.00	0.14	
19-Sep-15	78	66	91				0.00	0.15	
20-Sep-15	77	62	94				0.00	0.15	
21-Sep-15	76	67	89				0.00	0.11	
22-Sep-15	73	67	87				0.91	0.1	
23-Sep-15	74	67	84				0.00	0.11	
24-Sep-15	71	66	76				0.02	0.07	
25-Sep-15	67	63	74				0.00	0.07	
26-Sep-15	70	60	83				0.00	0.1	
27-Sep-15	73	70	75				0.04	0.05	
28-Sep-15	74	71	77				1.87	0.05	
29-Sep-15	77	74	84				0.17	0.08	
30-Sep-15	77	71	89				0.42	0.11	
High			94			0			
Low		52			0				
Average	76	67	86	#####	#DIV/0!	#####			
				Total for Month			4.15	3.55	
Days over 95 ^o				0			Number of Rain Days	11.00	
Days of 100 ^o				0			Historic Average	4.41	
Days below 32 ^o				0			Deviation from Average	-0.26	
				Net Gain/loss (Rain - ET)				0.6	

Year Cumulative	
Rain	ET
38.2	33.9
90.0	
44.1	
-5.8	
	4.3

October Daily Weather Data

Date	Temperature						Precipitation			
	Air Temp 6 ft			Soil Temp 4 inch			Rain	Evapo Trans		
	Avg	Min	Max	Avg	Min	Max	Inches	Inches		
1-Oct-15	71	68	74	76	74	78	0.00	0.07		
2-Oct-15	67	64	71	74	72	76	0.25	0.06		
3-Oct-15	65	61	69	71	70	73	0.00	0.06		
4-Oct-15	62	57	67	69	67	70	0.00	0.05		
5-Oct-15	67	64	71	71	68	73	0.00	0.06		
6-Oct-15	69	63	78	74	69	79	0.00	0.09		
7-Oct-15	70	59	83	76	69	83	0.00	0.11		
8-Oct-15	70	57	84	76	69	83	0.00	0.11		
9-Oct-15	75	63	88	78	72	84	0.00	0.11		
10-Oct-15	73	62	84	79	75	85	0.00	0.11		
11-Oct-15	64	55	72	75	72	79	0.00	0.07		
12-Oct-15	66	53	80	75	69	81	0.00	0.1		
13-Oct-15	71	60	84	76	71	82	0.00	0.1		
14-Oct-15	68	55	82	76	71	83	0.00	0.1		
15-Oct-15	67	50	86	75	68	83	0.00	0.1		
16-Oct-15	71	52	88	76	69	83	0.00	0.1		
17-Oct-15	66	57	77	75	70	80	0.00	0.1		
18-Oct-15	60	48	74	73	68	79	0.00	0.08		
19-Oct-15	59	43	74	71	65	77	0.00	0.08		
20-Oct-15	64	50	79	72	66	79	0.00	0.09		
21-Oct-15	69	55	82	74	68	81	0.00	0.09		
22-Oct-15	71	60	85	76	71	82	0.00	0.1		
23-Oct-15	72	60	86	77	72	83	0.00	0.1		
24-Oct-15	71	62	82	76	73	81	0.00	0.09		
25-Oct-15	72	64	81	76	73	79	0.00	0.07		
26-Oct-15	71	69	75	74	72	75	0.33	0.05		
27-Oct-15	71	68	77	73	71	74	0.32	0.06		
28-Oct-15	72	64	81	73	71	77	0.09	0.08		
29-Oct-15	70	60	84	74	68	80	0.00	0.09		
30-Oct-15	66	56	78	73	68	79	0.00	0.08		
31-Oct-15	69	54	84	72	66	78	0.01	0.08		
High			88			85				
Low		43			65					
Average	68	59	79	74	70	79				
Days over 95 ^o			0	Total for Month			1.00	2.64	39.2	36.5
Days below 32 ^o			0	Number of Rain Days			5.00		95.0	
				Historic Average			2.78		46.8	
				Deviation from Average			-1.78		-7.6	
				Net Gain/loss (Rain - ET)				-1.64		2.7

Year Cumulative

Rain	ET
39.2	36.5
95.0	
46.8	
-7.6	
	2.7

November Daily Weather Data

Date	Temperature						Precipitation	
	Air Temp 6 ft			Soil Temp 4 inch			Rain	Evapo Trans
	Avg	Min	Max	Avg	Min	Max	Inches	Inches
1-Nov-15	74	71	77	75	74	77	2.13	0.05
2-Nov-15	75	70	80	75	74	77	0.81	0.05
3-Nov-15	70	64	81	74	71	78	0.00	0.08
4-Nov-15	74	65	86	75	71	81	1.42	0.08
5-Nov-15	76	72	85	77	74	81	0.00	0.08
6-Nov-15	75	69	85	77	73	81	0.00	0.08
7-Nov-15	73	67	83	76	73	81	0.01	0.07
8-Nov-15	62	58	68	70	66	75	1.68	0.05
9-Nov-15	58	56	59	66	64	67	0.75	0.04
10-Nov-15	58	54	63	65	63	68	0.00	0.05
11-Nov-15	61	56	73	68	64	73	0.00	0.07
12-Nov-15	68	58	83	70	66	77	0.00	0.08
13-Nov-15	58	50	69	67	62	73	0.00	0.06
14-Nov-15	52	42	63	63	59	69	0.00	0.05
15-Nov-15	56	43	72	63	57	70	0.00	0.06
16-Nov-15	63	51	78	66	60	73	0.00	0.07
17-Nov-15	69	58	78	68	64	73	0.00	0.07
18-Nov-15	72	68	80	71	68	74	0.45	0.06
19-Nov-15	66	56	72	70	65	72	0.07	0.05
20-Nov-15	61	49	73	65	60	71	0.00	0.06
21-Nov-15	63	53	75	67	62	73	0.00	0.06
22-Nov-15	55	42	65	65	59	69	0.01	0.06
23-Nov-15	45	36	58	59	53	65	0.00	0.04
24-Nov-15	47	32	62	57	52	63	0.00	0.05
25-Nov-15	58	45	73	60	54	67	0.00	0.06
26-Nov-15	63	51	76	64	58	70	0.00	0.06
27-Nov-15	64	55	77	66	61	72	0.00	0.06
28-Nov-15	62	53	77	66	61	72	0.00	0.06
29-Nov-15	63	49	79	66	60	73	0.00	0.06
30-Nov-15	65	56	79	68	63	73	0.00	0.06
High			86			81		
Low		32			52			
Average	64	55	74	68	64	73		
Days over 95 ^o				Total for Month			7.33	1.83
				Historic Average			9.00	
				59 year Average			3.38	
				Deviation from Average			3.95	
				Net Gain/loss (Rain - ET)				5.5
Days below 32 ^o								

Year Cumulative	
Rain	ET
46.6	38.4
104.0	
50.2	
-3.7	
	8.2

December Daily Weather Data

Temperature							Precipitation		
Date	Air Temp 6 ft			Soil Temp 4 inch			Rain	Evapo Trans	
	Avg	Min	Max	Avg	Min	Max	Inches	Inches	
1-Dec-15	67	56	79	68	64	73	0.00	0.06	
2-Dec-15	63	54	71	67	63	69	1.52	0.05	
3-Dec-15	50	46	54	59	56	63	0.00	0.04	
4-Dec-15	52	42	62	58	53	64	0.00	0.04	
5-Dec-15	55	45	68	60	55	66	0.00	0.05	
6-Dec-15	55	45	69	60	56	66	0.00	0.05	
7-Dec-15	55	44	70	60	55	67	0.00	0.05	
8-Dec-15	52	41	68	59	54	66	0.00	0.04	
9-Dec-15	54	38	72	59	53	66	0.00	0.05	
10-Dec-15	58	45	72	60	55	65	0.00	0.05	
11-Dec-15	64	53	78	63	59	69	0.00	0.06	
12-Dec-15	62	51	77	63	59	69	0.00	0.05	
13-Dec-15	66	55	79	65	61	70	0.00	0.06	
14-Dec-15	67	56	73	66	63	68	0.07	0.05	
15-Dec-15	57	46	73	63	59	69	0.01	0.04	
16-Dec-15	60	44	71	62	57	67	0.06	0.06	
17-Dec-15	69	58	74	68	65	70	1.23	0.05	
18-Dec-15	50	40	58	58	51	65	0.00	0.04	
19-Dec-15	42	32	55	52	47	60	0.00	0.03	
20-Dec-15	47	31	61	52	46	60	0.00	0.04	
21-Dec-15	59	49	67	57	52	62	0.00	0.05	
22-Dec-15	64	62	68	63	62	64	1.21	0.04	
23-Dec-15	68	62	75	65	62	67	0.22	0.05	
24-Dec-15	76	72	83	71	68	75	0.00	0.06	
25-Dec-15	73	67	80	71	68	75	0.00	0.06	
26-Dec-15	72	66	81	71	68	76	0.00	0.07	
27-Dec-15	71	64	79	70	66	75	0.00	0.06	
28-Dec-15	72	66	78	70	68	74	1.56	0.06	
29-Dec-15	68	64	72	70	68	72	0.91	0.05	
30-Dec-15	72	69	77	71	70	74	0.43	0.05	
31-Dec-15	66	57	72	69	64	72	1.45	0.05	
High			83			76			
Low		31			46				
Average	61	52	71	64	60	68			
Days over 95 ^o				0			Total for Month	8.67	1.56
Days below 32 ^o				2			Number of Rain Days	11.00	
Total days in 2015							Historic Average	4.10	
<32^o or >95^o				15 17			Deviation from Average	4.57	
Net Gain/loss (Rain - ET)								7.11	

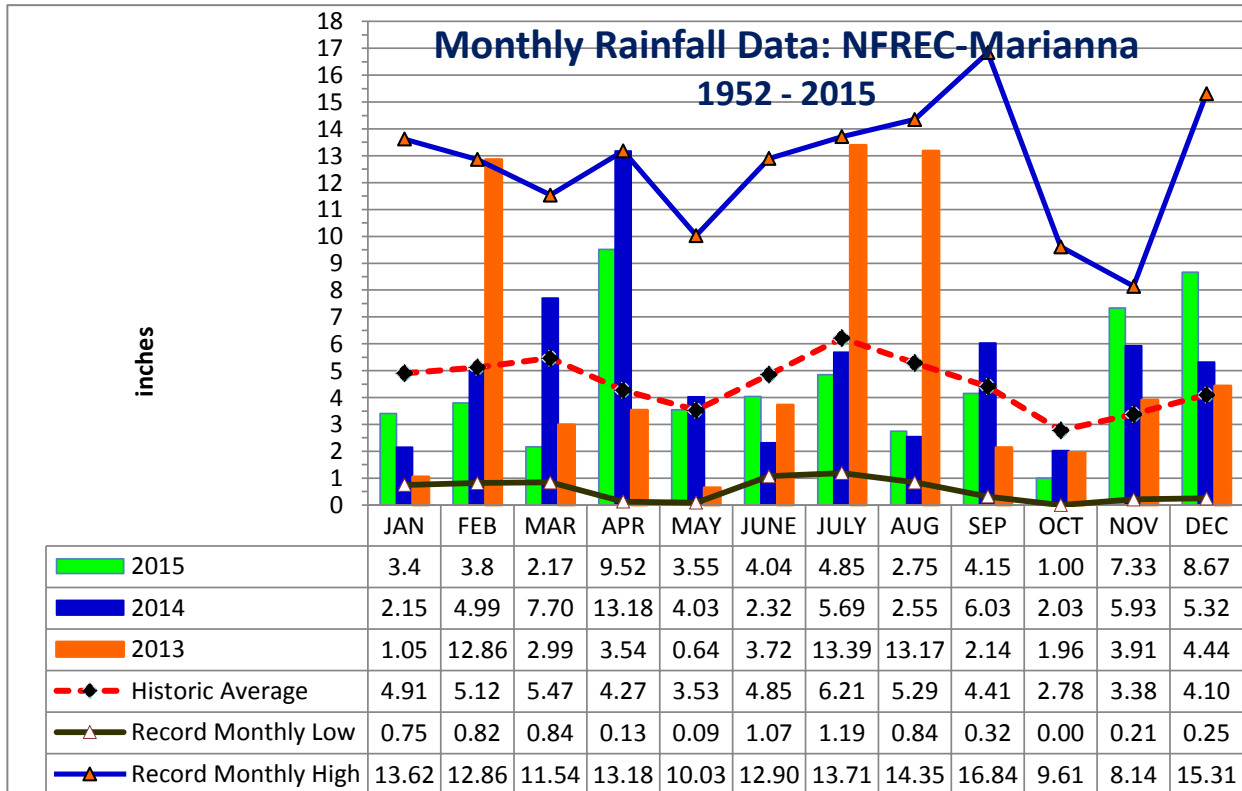
Year Cumulative	
Rain	ET
55.2	39.9
115.0	
54.3	
0.9	
	15.3

Jackson County
Monthly Total Rainfall, 1952 - 2015
No FL Research & Education Cntr, Marianna, FL



YEAR	JAN	FEB	MAR	APR	MAY	JUNE	JULY	AUG	SEP	OCT	NOV	DEC	TOTAL
1952	1.14	8.88	4.48	2.11	5.13	1.12	5.95	8.81	3.09	0.65	3.26	3.42	48.04
1953	4.84	7.26	3.03	8.43	2.43	3.97	6.84	1.63	6.33	0.65	4.09	<u>15.31</u>	64.81
1954	1.33	3.49	2.62	2.58	1.96	3.46	3.28	2.84	1.72	1.30	2.66	1.44	28.68
1955	3.66	1.83	0.84	5.80	3.03	1.62	6.75	3.75	2.44	2.10	0.72	0.77	33.31
1956	3.59	5.18	3.77	2.04	4.03	5.45	8.52	4.09	6.44	5.08	0.28	3.34	51.81
1957	0.75	2.65	5.17	5.74	4.60	5.75	9.83	5.91	<u>16.84</u>	1.31	6.24	2.22	67.01
1958	4.48	3.61	4.73	7.22	5.57	6.00	8.39	3.45	3.68	1.88	1.75	2.32	53.08
1959	3.67	7.06	8.50	5.73	6.95	3.77	4.83	3.67	3.07	7.93	0.21	1.53	56.92
1960	3.36	7.08	3.41	6.80	3.20	4.75	4.97	4.80	6.22	2.00	0.47	2.35	49.41
1961	4.23	4.15	3.64	5.57	3.97	4.41	3.99	11.09	2.60	0.00	2.84	6.23	52.72
1962	1.72	2.80	8.13	3.28	2.86	3.67	7.97	6.07	3.07	2.82	5.16	1.67	49.22
1963	7.31	3.02	3.18	1.36	3.50	7.99	5.16	1.50	5.25	0.01	4.22	6.05	48.55
1964	10.80	6.81	6.41	9.47	2.23	5.68	9.22	3.07	7.47	<u>9.61</u>	3.35	6.44	<u>80.56</u>
1965	2.63	6.09	5.51	3.96	0.18	9.60	3.26	4.18	4.48	3.41	1.81	3.60	48.71
1966	5.56	9.84	2.57	0.77	5.80	3.13	3.25	9.82	5.09	1.41	2.03	4.62	53.89
1967	8.27	3.32	2.19	0.13	2.61	7.02	6.49	3.58	1.40	1.86	2.40	7.98	47.25
1968	1.28	2.30	3.40	2.50	3.39	1.18	5.45	4.61	2.99	1.41	5.11	5.34	38.96
1969	1.68	3.49	7.08	4.54	3.01	1.71	13.18	3.05	5.64	1.50	1.22	3.80	49.90
1970	4.16	9.20	8.86	1.83	1.81	3.69	5.04	8.01	0.49	4.40	2.21	3.13	52.83
1971	1.97	6.11	7.15	3.17	3.03	3.85	5.20	6.76	2.47	1.84	1.94	3.70	47.19
1972	3.62	6.03	6.41	0.38	2.87	8.89	3.78	5.39	2.14	2.44	3.29	3.77	49.01
1973	8.14	7.71	8.38	7.60	6.87	3.63	11.12	4.51	5.40	0.27	3.64	5.33	72.60
1974	5.24	5.80	2.66	3.40	3.78	1.56	3.29	8.01	4.68	0.84	2.14	2.89	44.29
1975	10.21	6.36	4.91	10.35	3.97	4.10	<u>13.71</u>	5.40	3.81	4.35	2.89	3.28	73.34
1976	6.99	1.50	4.89	1.87	8.89	3.08	3.03	3.47	5.47	6.18	5.72	3.97	55.06
1977	3.47	1.81	6.52	0.88	0.60	6.36	3.55	5.22	9.83	2.59	<u>8.14</u>	4.19	53.16
1978	7.28	3.28	7.25	4.65	6.73	3.79	7.25	4.90	0.98	0.20	6.01	3.65	55.97
1979	7.30	7.78	3.26	7.75	6.22	1.31	7.49	6.30	11.51	0.53	4.47	2.84	66.76
1980	6.58	2.96	<u>11.54</u>	9.29	4.50	3.50	5.87	2.53	4.56	4.71	1.52	0.25	57.81
1981	1.70	5.32	5.94	3.03	2.73	4.74	4.02	2.53	2.44	1.75	0.85	4.94	39.99
1982	4.17	5.61	2.91	5.93	5.39	3.00	7.51	4.42	6.00	2.65	2.34	9.14	59.07
1983	4.92	6.84	8.53	7.88	2.27	5.66	1.19	2.53	8.97	3.52	5.90	7.65	65.86
1984	5.49	5.01	8.62	6.29	2.50	5.31	12.01	5.76	0.32	1.60	1.63	0.80	55.34
1985	4.60	4.46	2.60	1.18	4.44	5.68	3.68	5.58	1.42	7.42	7.91	5.34	54.31
1986	5.68	10.27	3.21	0.83	2.26	1.85	2.75	4.12	2.35	2.22	4.40	5.68	45.62
1987	8.62	5.52	7.23	0.40	4.46	5.43	5.51	4.18	2.27	0.06	4.02	0.81	48.51
1988	5.57	6.40	8.41	2.69	0.28	1.07	5.43	3.98	5.53	1.98	3.28	1.23	45.85
1989	1.59	2.74	4.96	3.63	7.01	<u>12.90</u>	11.19	3.06	3.36	7.20	4.71	5.45	67.80
1990	5.26	4.57	4.55	3.00	3.22	4.02	3.65	2.91	0.85	1.34	0.93	3.42	37.72
1991	<u>13.62</u>	3.44	9.00	5.32	<u>10.03</u>	5.30	10.67	3.89	1.53	1.17	1.60	3.00	68.57
1992	8.37	6.29	7.92	2.50	1.41	11.16	8.69	6.72	3.19	2.08	7.40	2.93	68.66
1993	12.00	3.38	7.41	1.50	1.60	4.18	6.68	3.89	3.44	2.90	2.27	3.63	52.88
1994	8.64	2.53	6.25	4.34	1.82	11.41	10.95	9.08	6.44	7.62	2.53	3.79	75.40
1995	5.23	3.13	4.29	4.35	3.90	5.56	3.02	6.16	0.86	7.51	4.12	1.78	49.91

YEAR	JAN	FEB	MAR	APR	MAY	JUNE	JULY	AUG	SEP	OCT	NOV	DEC	TOTAL
1996	3.64	5.99	8.47	5.76	1.50	5.43	2.83	14.28	5.32	3.81	2.01	3.65	62.69
1997	6.68	5.29	2.63	10.08	5.91	6.41	5.73	4.65	3.78	2.10	6.85	8.44	68.55
1998	6.28	8.30	6.11	2.24	1.45	2.35	4.37	2.20	16.31	0.30	2.05	1.98	53.94
1999	6.95	2.90	3.61	1.50	6.71	8.99	8.64	4.02	4.33	3.13	3.56	2.50	56.84
2000	3.78	4.96	4.48	4.05	0.09	4.00	3.40	7.15	7.20	0.71	4.43	3.21	47.46
2001	2.16	0.82	10.00	1.99	2.52	8.24	4.66	8.21	1.90	1.51	1.70	0.78	44.49
2002	3.82	2.44	5.51	5.78	2.19	3.45	10.34	3.30	11.83	7.36	7.76	5.99	69.77
2003	2.30	7.03	8.18	4.89	3.11	6.11	7.84	5.99	2.39	3.58	3.04	3.12	57.58
2004	3.19	7.66	0.90	4.37	1.19	6.66	4.92	1.67	10.01	3.89	4.97	3.25	52.68
2005	3.33	2.31	9.05	7.04	1.67	7.47	9.44	11.71	1.62	0.03	3.15	4.81	61.63
2006	4.82	3.90	0.91	1.61	4.97	1.99	2.22	5.18	0.91	3.09	3.41	5.43	38.44
2007	5.99	2.45	1.10	0.99	1.57	3.97	3.94	4.18	1.27	4.79	1.89	4.03	36.17
2008	4.26	9.00	9.11	4.28	1.46	8.64	4.02	9.29	0.74	5.11	3.18	8.23	67.32
2009	2.33	3.26	7.11	7.73	9.17	2.78	3.88	3.19	5.22	3.39	2.35	9.57	59.98
2010	7.53	3.99	3.41	4.01	5.09	2.92	2.31	0.84	1.33	0.22	5.82	0.63	38.10
2011	4.33	4.04	5.00	0.92	0.78	1.66	5.11	1.87	2.26	1.84	1.94	3.75	33.50
2012	3.79	7.49	5.94	3.17	1.42	7.35	5.05	14.35	5.17	1.75	1.30	4.10	60.88
2013	1.05	12.86	2.99	3.54	0.64	3.72	13.39	13.17	2.14	1.96	3.91	4.44	63.81
2014	2.15	4.99	7.70	13.18	4.03	2.32	5.69	2.55	6.03	2.03	5.93	5.32	61.92
2015	3.4	3.8	2.17	9.52	3.55	4.04	4.85	2.75	4.15	1.00	7.33	8.67	55.23
Deviation from the Average Monthly Rainfall													
Inches	-1.51	-1.32	-3.30	5.25	0.02	-0.81	-1.36	-2.54	-0.26	-1.78	3.95	4.57	0.91
Monthly Average Rainfall, 1952-2014													
AVG.	4.91	5.12	5.47	4.27	3.53	4.85	6.21	5.29	4.41	2.78	3.38	4.10	54.32
% of Annual Rainfall Occuring each Month													
	9.0%	9.4%	10.1%	7.9%	6.5%	8.9%	11.4%	9.7%	8.1%	5.1%	6.2%	7.5%	
Record High/Low for the Month													
LOW	0.75	0.82	0.84	0.13	0.09	1.07	1.19	0.84	0.32	0.00	0.21	0.25	28.68
HIGH	13.62	12.86	11.54	13.18	10.03	12.90	13.71	14.35	16.84	9.61	8.14	15.31	80.56

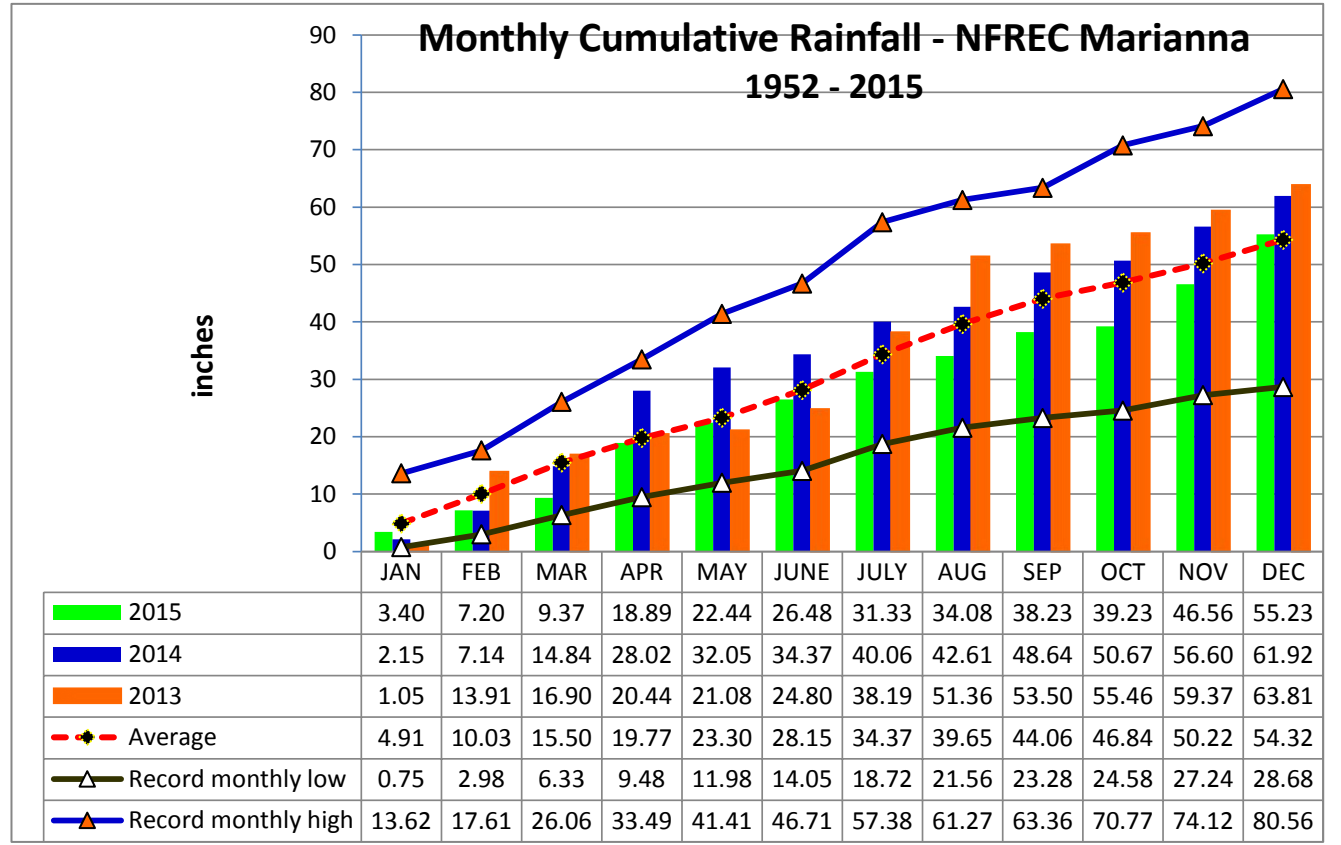




YEAR	JAN	FEB	MAR	APR	MAY	JUNE	JULY	AUG	SEP	OCT	NOV	DEC
1952	1.14	10.02	14.50	16.61	21.74	22.86	28.81	37.62	40.71	41.36	44.62	48.04
1953	4.84	12.10	15.13	23.56	25.99	29.96	36.80	38.43	44.76	45.41	49.50	64.81
1954	1.33	4.82	7.44	10.02	11.98	15.44	18.72	21.56	23.28	24.58	27.24	28.68
1955	3.66	5.49	6.33	12.13	15.16	16.78	23.53	27.28	29.72	31.82	32.54	33.31
1956	3.59	8.77	12.54	14.58	18.61	24.06	32.58	36.67	43.11	48.19	48.47	51.81
1957	0.75	3.40	8.57	14.31	18.91	24.66	34.49	40.40	57.24	58.55	64.79	67.01
1958	4.48	8.09	12.82	20.04	25.61	31.61	40.00	43.45	47.13	49.01	50.76	53.08
1959	3.67	10.73	19.23	24.96	31.91	35.68	40.51	44.18	47.25	55.18	55.39	56.92
1960	3.36	10.44	13.85	20.65	23.85	28.60	33.57	38.37	44.59	46.59	47.06	49.41
1961	4.23	8.38	12.02	17.59	21.56	25.97	29.96	41.05	43.65	43.65	46.49	52.72
1962	1.72	4.52	12.65	15.93	18.79	22.46	30.43	36.50	39.57	42.39	47.55	49.22
1963	7.31	10.33	13.51	14.87	18.37	26.36	31.52	33.02	38.27	38.28	42.50	48.55
1964	10.80	17.61	24.02	33.49	35.72	41.40	50.62	53.69	61.16	70.77	74.12	80.56
1965	2.63	8.72	14.23	18.19	18.37	27.97	31.23	35.41	39.89	43.30	45.11	48.71
1966	5.56	15.40	17.97	18.74	24.54	27.67	30.92	40.74	45.83	47.24	49.27	53.89
1967	8.27	11.59	13.78	13.91	16.52	23.54	30.03	33.61	35.01	36.87	39.27	47.25
1968	1.28	3.58	6.98	9.48	12.87	14.05	19.50	24.11	27.10	28.51	33.62	38.96
1969	1.68	5.17	12.25	16.79	19.80	21.51	34.69	37.74	43.38	44.88	46.10	49.90
1970	4.16	13.36	22.22	24.05	25.86	29.55	34.59	42.60	43.09	47.49	49.70	52.83
1971	1.97	8.08	15.23	18.40	21.43	25.28	30.48	37.24	39.71	41.55	43.49	47.19
1972	3.62	9.65	16.06	16.44	19.31	28.20	31.98	37.37	39.51	41.95	45.24	49.01
1973	8.14	15.85	24.23	31.83	38.70	42.33	53.45	57.96	63.36	63.63	67.27	72.60
1974	5.24	11.04	13.70	17.10	20.88	22.44	25.73	33.74	38.42	39.26	41.40	44.29
1975	10.21	16.57	21.48	31.83	35.80	39.90	53.61	59.01	62.82	67.17	70.06	73.34
1976	6.99	8.49	13.38	15.25	24.14	27.22	30.25	33.72	39.19	45.37	51.09	55.06
1977	3.47	5.28	11.80	12.68	13.28	19.64	23.19	28.41	38.24	40.83	48.97	53.16
1978	7.28	10.56	17.81	22.46	29.19	32.98	40.23	45.13	46.11	46.31	52.32	55.97
1979	7.30	15.08	18.34	26.09	32.31	33.62	41.11	47.41	58.92	59.45	63.92	66.76
1980	6.58	9.54	21.08	30.37	34.87	38.37	44.24	46.77	51.33	56.04	57.56	57.81
1981	1.70	7.02	12.96	15.99	18.72	23.46	27.48	30.01	32.45	34.20	35.05	39.99
1982	4.17	9.78	12.69	18.62	24.01	27.01	34.52	38.94	44.94	47.59	49.93	59.07
1983	4.92	11.76	20.29	28.17	30.44	36.10	37.29	39.82	48.79	52.31	58.21	65.86
1984	5.49	10.50	19.12	25.41	27.91	33.22	45.23	50.99	51.31	52.91	54.54	55.34
1985	4.60	9.06	11.66	12.84	17.28	22.96	26.64	32.22	33.64	41.06	48.97	54.31
1986	5.68	15.95	19.16	19.99	22.25	24.10	26.85	30.97	33.32	35.54	39.94	45.62
1987	8.62	14.14	21.37	21.77	26.23	31.66	37.17	41.35	43.62	43.68	47.70	48.51
1988	5.57	11.97	20.38	23.07	23.35	24.42	29.85	33.83	39.36	41.34	44.62	45.85
1989	1.59	4.33	9.29	12.92	19.93	32.83	44.02	47.08	50.44	57.64	62.35	67.80
1990	5.26	9.83	14.38	17.38	20.60	24.62	28.27	31.18	32.03	33.37	34.30	37.72
1991	13.62	17.06	26.06	31.38	41.41	46.71	57.38	61.27	62.80	63.97	65.57	68.57
1992	8.37	14.66	22.58	25.08	26.49	37.65	46.34	53.06	56.25	58.33	65.73	68.66
1993	12.00	15.38	22.79	24.29	25.89	30.07	36.75	40.64	44.08	46.98	49.25	52.88
1994	8.64	11.17	17.42	21.76	23.58	34.99	45.94	55.02	61.46	69.08	71.61	75.40
1995	5.23	8.36	12.65	17.00	20.90	26.46	29.48	35.64	36.50	44.01	48.13	49.91

YEAR	JAN	FEB	MAR	APR	MAY	JUNE	JULY	AUG	SEP	OCT	NOV	DEC
1996	3.64	9.63	18.10	23.86	25.36	30.79	33.62	47.90	53.22	57.03	59.04	62.69
1997	6.68	11.97	14.60	24.68	30.59	37.00	42.73	47.38	51.16	53.26	60.11	68.55
1998	6.28	14.58	20.69	22.93	24.38	26.73	31.10	33.30	49.61	49.91	51.96	53.94
1999	6.95	9.85	13.46	14.96	21.67	30.66	39.30	43.32	47.65	50.78	54.34	56.84
2000	3.78	8.74	13.22	17.27	17.36	21.36	24.76	31.91	39.11	39.82	44.25	47.46
2001	2.16	2.98	12.98	14.97	17.49	25.73	30.39	38.60	40.50	42.01	43.71	44.49
2002	3.82	6.26	11.77	17.55	19.74	23.19	33.53	36.83	48.66	56.02	63.78	69.77
2003	2.30	9.33	17.51	22.40	25.51	31.62	39.46	45.45	47.84	51.42	54.46	57.58
2004	3.19	10.85	11.75	16.12	17.31	23.97	28.89	30.56	40.57	44.46	49.43	52.68
2005	3.33	5.64	14.69	21.73	23.40	30.87	40.31	52.02	53.64	53.67	56.82	61.63
2006	4.82	8.72	9.63	11.24	16.21	18.20	20.42	25.60	26.51	29.60	33.01	38.44
2007	5.99	8.44	9.54	10.53	12.10	16.07	20.01	24.19	25.46	30.25	32.14	36.17
2008	4.26	13.26	22.37	26.65	28.11	36.75	40.77	50.06	50.80	55.91	59.09	67.32
2009	2.33	5.59	12.70	20.43	29.60	32.38	36.26	39.45	44.67	48.06	50.41	59.98
2010	7.53	11.52	14.93	18.94	24.03	26.95	29.26	30.10	31.43	31.65	37.47	38.10
2011	4.33	8.37	13.37	14.29	15.07	16.73	21.84	23.71	25.97	27.81	29.75	33.50
2012	3.79	11.28	17.22	20.39	21.81	29.16	34.21	48.56	53.73	55.48	56.78	60.88
2013	1.05	13.91	16.90	20.44	21.08	24.80	38.19	51.36	53.50	55.46	59.37	63.81
2014	2.15	7.14	14.84	28.02	32.05	34.37	40.06	42.61	48.64	50.67	56.60	61.92
2015	3.40	7.20	9.37	18.89	22.44	26.48	31.33	34.08	38.23	39.23	46.56	55.23

2014 Deviation from the Average Accumulation												
Inches	-1.51	-2.83	-6.13	-0.88	-0.86	-1.67	-3.04	-5.57	-5.83	-7.61	-3.66	0.91
Average Accumulation, 1952-2014												
Inches	4.91	10.03	15.50	19.77	23.30	28.15	34.37	39.65	44.06	46.84	50.22	54.32
Record High/Low Accumulation												
LOW	0.75	2.98	6.33	9.48	11.98	14.05	18.72	21.56	23.28	24.58	27.24	28.68
HIGH	13.62	17.61	26.06	33.49	41.41	46.71	57.38	61.27	63.36	70.77	74.12	80.56

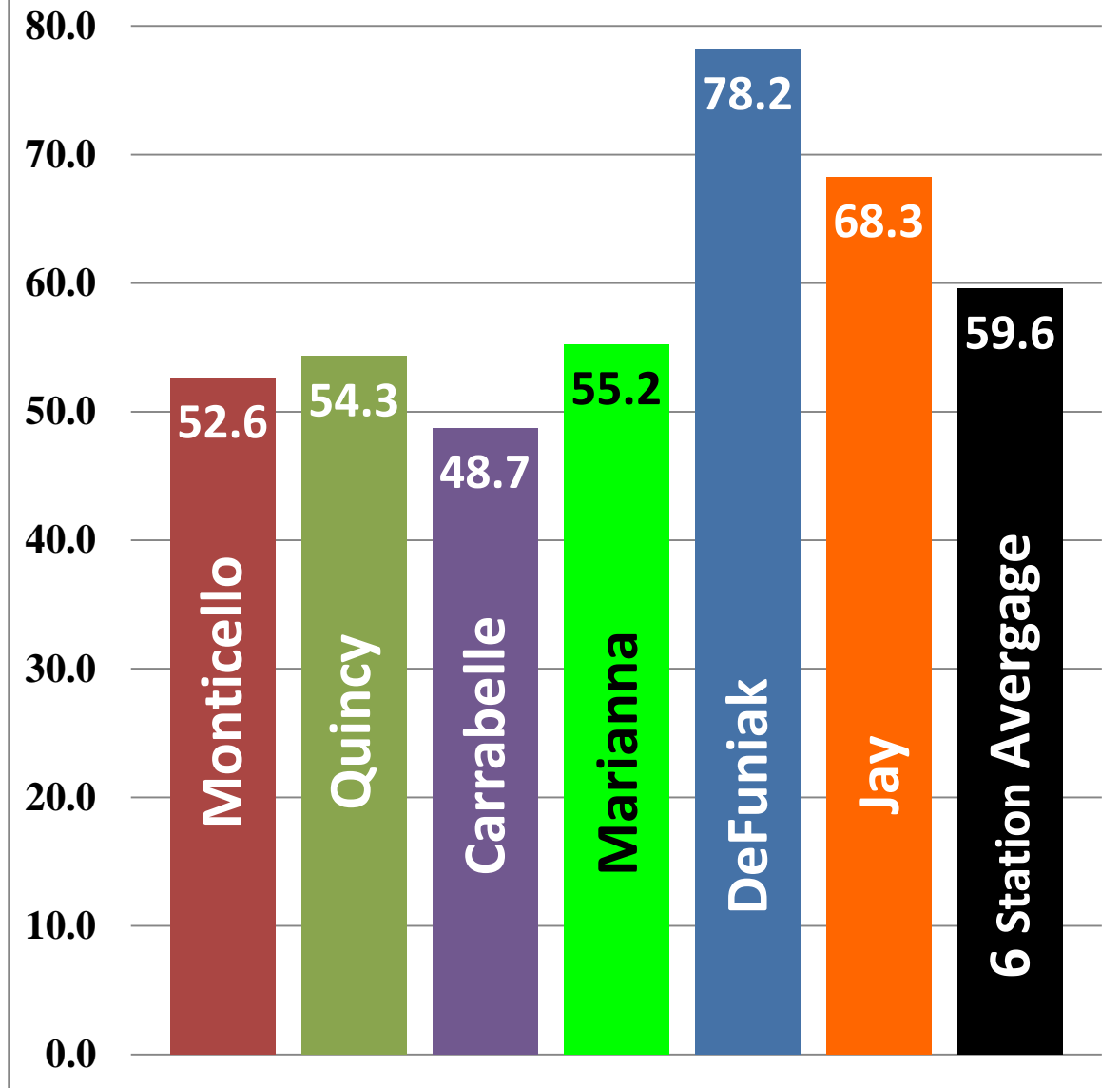


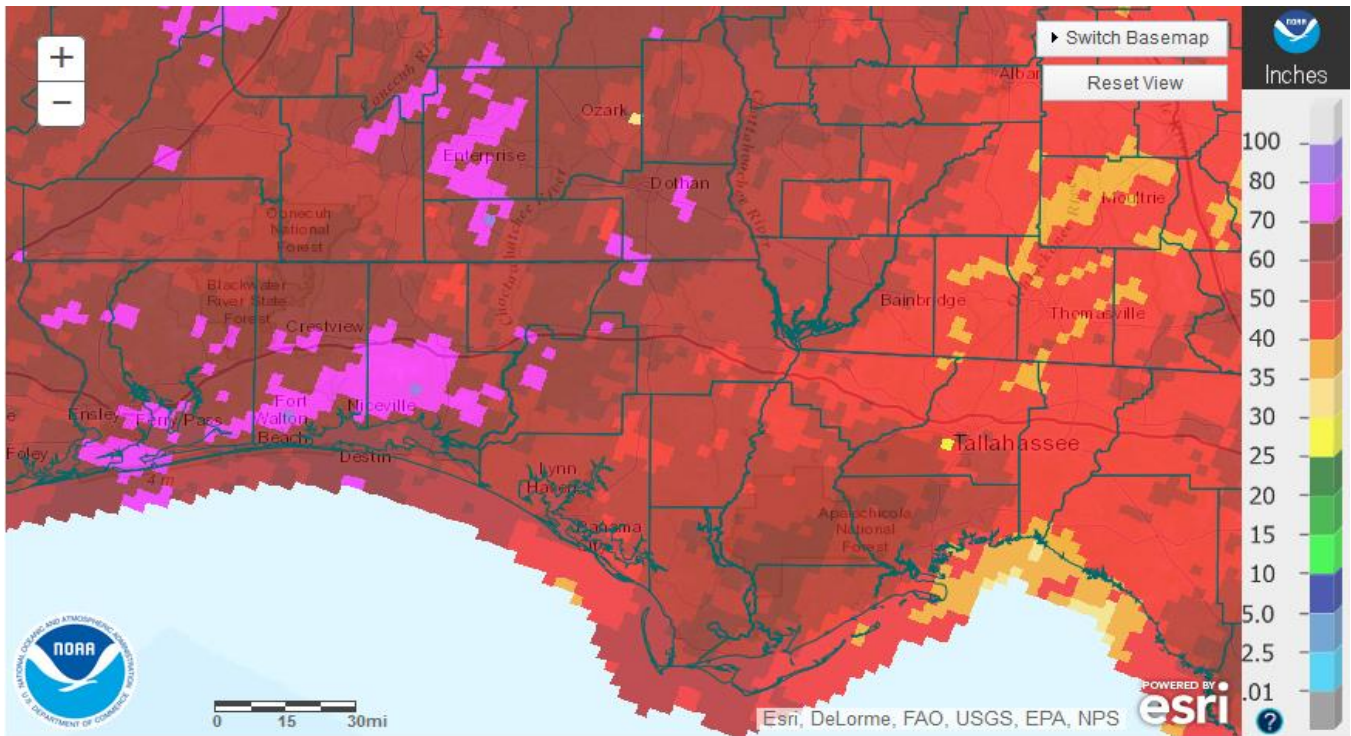
2015 UF/IFAS FAWN Panhandle Weather Station Summary

FAWN Station	Data	Jan	Feb	Mar	Apr	May	June	July	Aug	Sept	Oct	Nov	Dec	Total
Monticello	Rain	5.8	5.8	2.7	5.8	4.4	4.8	4.3	2.2	3.3	0.6	10.0	3.1	52.6
	Hist Avg	4.5	4.6	6.1	4.1	3.4	5.7	7.0	6.9	5.4	3.6	3.1	3.7	58.1
	Deviation	1.3	1.2	-3.5	1.7	1.0	-0.9	-2.7	-4.8	-2.1	-3.0	6.9	-0.6	-5.5
Quincy	Rain	5.4	3.5	2.4	6.0	3.0	5.6	7.0	3.8	3.8	0.3	6.7	6.9	54.3
	Hist Avg	5.0	4.3	5.6	3.7	4.2	5.2	6.3	6.2	4.1	3.4	3.3	3.7	55.0
	Deviation	0.4	-0.8	-3.3	2.3	-1.2	0.4	0.7	-2.4	-0.3	-3.1	3.4	3.2	-0.7
Carrabelle	Rain	4.3	5.2	1.9	4.8	0.1	3.3	4.7	5.3	5.5	1.1	9.1	3.5	48.7
	Hist Avg	3.8	3.7	4.9	3.0	2.7	5.3	7.3	7.9	7.3	3.7	3.2	3.0	55.8
	Deviation	0.5	1.5	-3.0	1.8	-2.6	-2.0	-2.6	-2.6	-1.8	-2.6	5.9	0.5	-7.1
Marianna	Rain	3.4	3.8	2.2	9.5	3.6	4.0	4.9	2.8	4.2	1.0	7.3	8.7	55.2
	Hist Avg	4.9	5.1	5.5	4.3	3.5	4.9	6.2	5.3	4.4	2.8	3.4	4.1	54.3
	Deviation	-1.5	-1.3	-3.3	5.2	0.0	-0.8	-1.4	-2.5	-0.3	-1.8	4.0	4.6	0.9
DeFuniak	Rain	3.3	3.6	2.1	9.6	8.1	4.0	7.3	5.8	8.8	3.4	13.4	8.7	78.2
	Hist Avg	4.9	5.4	5.6	3.9	4.5	7.1	7.2	6.3	5.7	3.7	4.8	4.5	63.7
	Deviation	-1.6	-1.9	-3.5	5.7	3.5	-3.1	0.1	-0.6	3.2	-0.3	8.6	4.2	14.5
Jay	Rain	4.4	3.5	1.3	12.6	2.7	4.3	9.2	4.4	4.2	6.9	5.2	9.7	68.3
	Hist Avg	5.5	5.3	6.6	4.8	4.8	5.8	7.0	6.2	5.5	3.3	5.1	4.7	64.6
	Deviation	-1.1	-1.9	-5.4	7.8	-2.2	-1.5	2.2	-1.8	-1.3	3.6	0.1	5.0	3.7
6 Station Average		4.4	4.2	2.1	8.1	3.6	4.4	6.2	4.0	4.9	2.2	8.6	6.8	59.6

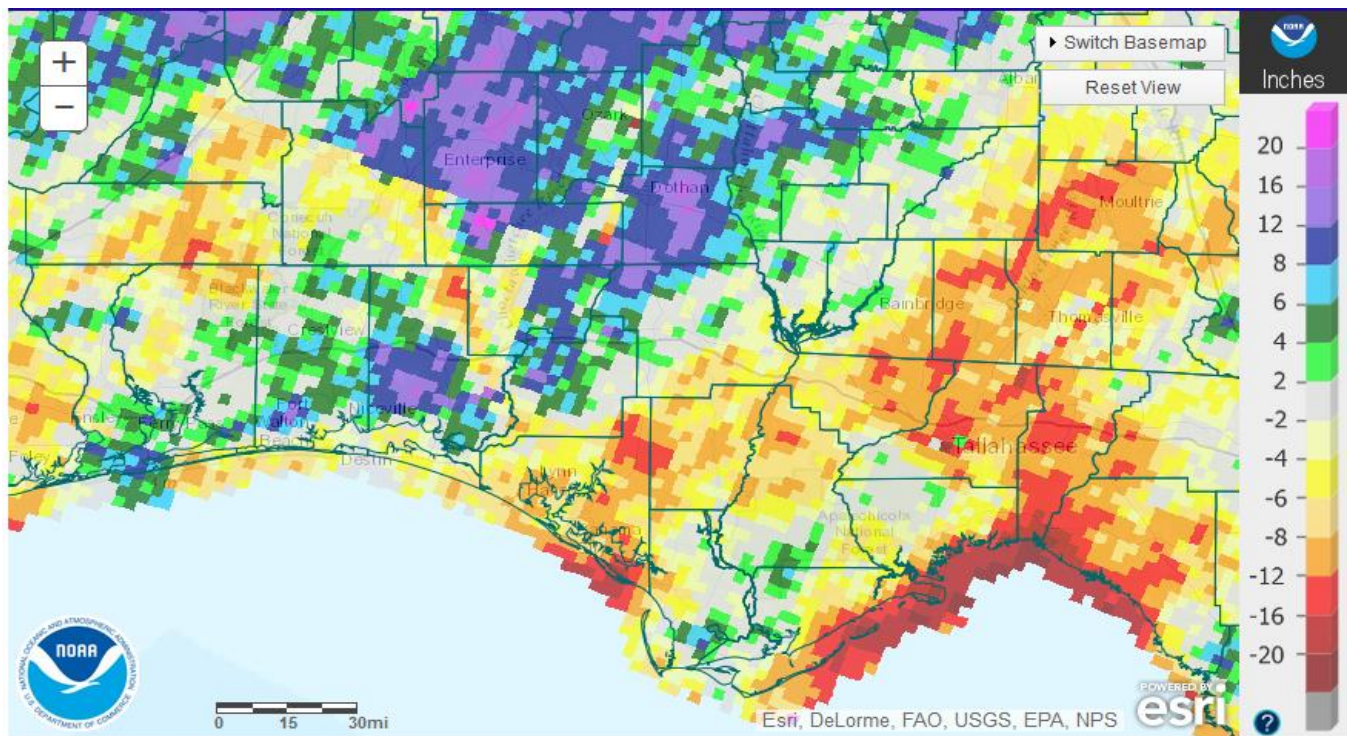
58.6
1.0

FAWN 2015 Jan - Dec Rainfall Totals





NOAA 2015 total annual rainfall



NOAA 2015 departure from normal rainfall