



Jackson County 2017 Weather Data

66 Years of Weather Data Recorded at the UF/IFAS Marianna North Florida Research and Education Center



Doug Mayo
Jackson County Extension Director

1952-2008 Rainfall Data compiled by
Ed Jowers, Emeritus County Extension Director

Data provided by Florida Automated Weather Station (FAWN)
UF/IFAS North Florida Research and Education Center
Greenwood, Florida



<http://fawn.ifas.ufl.edu/station.php?id=130>

Tower Name	Tower Number	Latitude Degree, Minutes	Latitude Degrees Minutes, Seconds	Latitude Degrees Decimal	Longitude Degree, Minutes	Longitude Degrees Minutes, Seconds	Longitude Degrees Decimal	Elevation Feet
Marianna	130.00	N 30°51.000'	N 30°50'00.00"	N 30.85000°	-85°09.910'	-85°09'54.60"	-85.16516°	115'

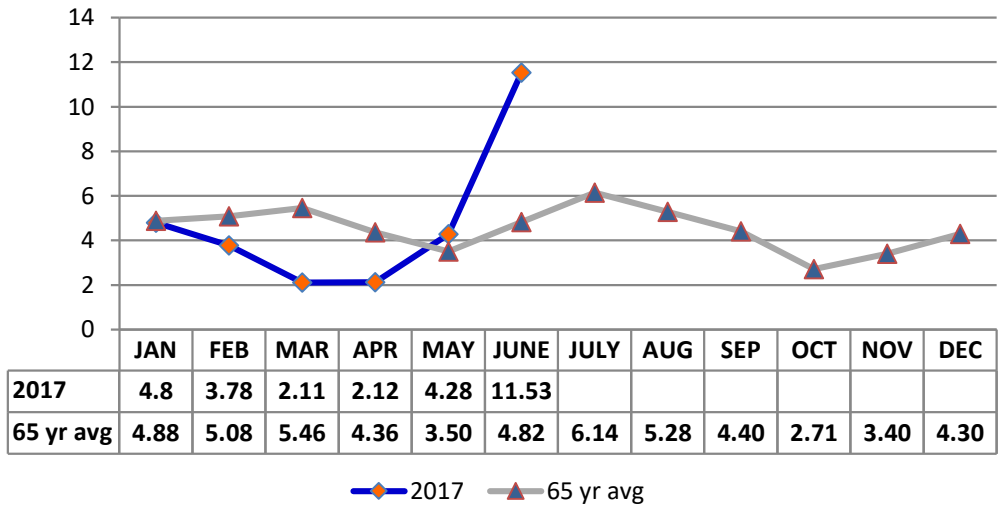
2017 UF/IFAS FAWN Marianna Weather Summary

Month	6' Air Temp			Soil Temp			Rainfall Inches	Dev from 64 yr Avg
	High	Low	Avg	High	Low	Avg		
January	70	27	48	65	39	52	4.8	-0.1
February	83	35	61	78	54	65	3.8	-1.3
March	88	29	62	86	50	68	2.1	-3.3
April	90	42	70	91	60	77	2.1	-2.2
May	93	48	74	94	60	80	4.3	0.8
June	91	63	77	96	73	82	11.5	6.7
2017	93	27	65	96	39	71	28.6	0.5

Data: UF/IFAS Florida Automated Weather Network Marianna Station

Total days in 2017 <32° 8 Total days in 2017 >95° 0

Monthly Rainfall @ Marianna FAWN



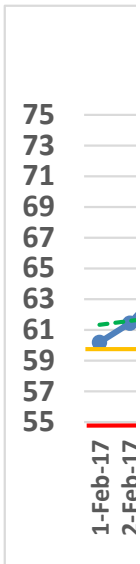
January Daily Weather Data

Temperature							Precipitation				
Date	Air Temp 6 ft			Soil Temp 4 inch			Rain	Evapo Trans			
	Avg	Min	Max	Avg	Min	Max	Inches	Inches			
1-Jan-16	52	47	57	61	56	64	0.13	0.04			
2-Jan-16	47	43	50	55	53	58	0.00	0.04			
3-Jan-16	47	43	52	54	52	58	0.00	0.04			
4-Jan-16	47	39	57	53	48	59	0.00	0.04			
5-Jan-16	40	33	49	49	45	56	0.00	0.03			
6-Jan-16	44	36	54	50	45	59	0.00	0.04			
7-Jan-16	51	42	62	54	48	60	0.82	0.05			
8-Jan-16	56	51	59	57	54	60	0.22	0.04			
9-Jan-16	59	55	63	59	57	60	0.48	0.04			
10-Jan-16	48	37	62	54	47	60	0.00	0.06			
11-Jan-16	38	30	50	49	43	57	0.00	0.03			
12-Jan-16	42	29	58	48	43	56	0.00	0.04			
13-Jan-16	45	33	60	49	43	58	0.00	0.04			
14-Jan-16	44	32	55	48	44	52	0.00	0.04			
15-Jan-16	56	47	66	55	50	62	1.55	0.05			
16-Jan-16	56	50	66	57	53	65	0.00	0.05			
17-Jan-16	49	41	56	53	48	59	0.55	0.04			
18-Jan-16	43	33	53	49	44	57	0.00	0.04			
19-Jan-16	38	30	50	47	42	55	0.00	0.04			
20-Jan-16	46	29	63	49	41	57	0.00	0.05			
21-Jan-16	55	49	59	53	49	57	0.09	0.05			
22-Jan-16	52	36	61	55	48	61	0.57	0.06			
23-Jan-16	37	32	42	46	42	50	0.00	0.04			
24-Jan-16	38	27	55	46	39	55	0.00	0.04			
25-Jan-16	47	29	65	49	41	59	0.00	0.06			
26-Jan-16	56	42	69	53	47	59	0.00	0.06			
27-Jan-16	56	51	60	56	54	59	0.04	0.05			
28-Jan-16	48	40	51	53	49	55	0.35	0.04			
29-Jan-16	49	37	65	51	45	60	0.00	0.06			
30-Jan-16	53	37	70	53	46	63	0.00	0.07			
31-Jan-16	58	49	69	56	52	62	0.00	0.06			
High			70			65					
Low		27			39						
Average	48	39	58	52	47	59					
Days over 95 ^o Days below 32 ^o				Total for Month			4.80	1.43			
							Number of Rain Days			10.00	
							Historic Average			4.88	
							Deviation from Average			-0.08	
							Net Gain/loss (Rain - ET)				3.37

Year Cumulative	
Rain	ET
4.8	1.4
10.0	
4.9	
-0.1	
	3.4

February Daily Weather Data

Date	Temperature						Precipitation		
	Air Temp 6 ft			Soil Temp 4 inch			Rain	Evapo Trans	
	Avg	Min	Max	Avg	Min	Max	Inches	Inches	
1-Feb-17	59	47	73	60	55	66	0.00	0.07	
2-Feb-17	60	46	75	61	56	68	0.00	0.08	
3-Feb-17	59	48	69	64	61	68	0.00	0.07	
4-Feb-17	48	37	60	60	55	66	0.00	0.06	
5-Feb-17	53	39	69	60	54	67	0.00	0.07	
6-Feb-17	62	49	77	64	59	71	0.00	0.08	
7-Feb-17	62	51	77	64	61	69	1.83	0.08	
8-Feb-17	67	58	74	65	62	69	0.04	0.07	
9-Feb-17	59	46	70	64	59	68	0.00	0.09	
10-Feb-17	52	38	67	60	54	67	0.00	0.08	
11-Feb-17	60	41	77	61	54	69	0.00	0.09	
12-Feb-17	70	62	80	67	63	72	0.00	0.09	
13-Feb-17	63	48	74	67	64	73	0.00	0.09	
14-Feb-17	61	44	78	65	59	73	0.00	0.09	
15-Feb-17	62	49	74	67	63	72	0.00	0.09	
16-Feb-17	50	40	64	63	58	69	0.00	0.08	
17-Feb-17	54	35	71	62	55	69	0.00	0.08	
18-Feb-17	60	53	70	64	61	69	0.11	0.08	
19-Feb-17	64	55	77	67	63	75	0.00	0.1	
20-Feb-17	65	50	80	68	61	75	0.00	0.1	
21-Feb-17	62	56	72	66	64	68	1.21	0.06	
22-Feb-17	63	59	71	66	63	71	0.59	0.07	
23-Feb-17	66	57	77	68	63	76	0.00	0.1	
24-Feb-17	67	54	83	70	63	78	0.00	0.11	
25-Feb-17	66	53	75	70	65	75	0.00	0.1	
26-Feb-17	54	39	68	65	59	73	0.00	0.09	
27-Feb-17	62	48	75	65	59	70	0.00	0.09	
28-Feb-17	68	52	82	68	62	75	0.00	0.11	
High			83			78			
Low		35			54				
Average	61	48	74	65	60	71			
Days over 95 ⁰							Total for Month	3.78	2.37
Days below 32 ⁰							Number of Rain Days	5.00	
							Historic Average	5.08	
							Deviation from Average	-1.30	
							Net Gain/loss (Rain - ET)		1.41



Year Cumulative	
Rain	ET
8.6	3.8
15.0	
10.0	
-1.4	
	4.8

March Daily Weather Data

Date	Temperature						Precipitation		
	Air Temp 6 ft			Soil Temp 4 inch			Rain	Evapo Trans	
	Avg	Min	Max	Avg	Min	Max	Inches	Inches	
1-Mar-17	72	63	81	71	67	75	0.00	0.1	
2-Mar-17	59	49	72	68	62	72	0.18	0.1	
3-Mar-17	54	39	67	63	56	71	0.00	0.09	
4-Mar-17	52	35	67	63	56	71	0.00	0.09	
5-Mar-17	58	43	72	63	57	70	0.00	0.09	
6-Mar-17	64	54	75	67	62	73	0.00	0.11	
7-Mar-17	66	55	77	67	62	73	0.03	0.1	
8-Mar-17	64	53	74	69	65	76	0.08	0.1	
9-Mar-17	63	45	80	69	61	77	0.00	0.11	
10-Mar-17	66	53	78	70	66	76	0.01	0.11	
11-Mar-17	60	49	75	69	62	76	0.00	0.1	
12-Mar-17	54	48	63	67	64	72	0.00	0.07	
13-Mar-17	47	45	48	62	58	65	0.41	0.04	
14-Mar-17	49	44	56	58	55	62	0.00	0.07	
15-Mar-17	42	34	52	57	50	65	0.00	0.08	
16-Mar-17	44	29	59	58	50	67	0.00	0.08	
17-Mar-17	54	36	72	62	53	72	0.00	0.1	
18-Mar-17	62	43	78	65	58	73	0.00	0.11	
19-Mar-17	62	47	76	67	61	74	0.00	0.12	
20-Mar-17	63	43	81	68	60	78	0.00	0.12	
21-Mar-17	69	53	85	71	65	80	0.00	0.13	
22-Mar-17	73	61	88	74	68	82	0.00	0.14	
23-Mar-17	66	60	74	72	69	75	0.00	0.08	
24-Mar-17	67	57	79	72	67	80	0.00	0.12	
25-Mar-17	69	59	80	73	68	80	0.00	0.12	
26-Mar-17	69	62	81	74	70	80	0.56	0.11	
27-Mar-17	69	58	82	73	66	81	0.00	0.13	
28-Mar-17	72	64	82	75	69	82	0.00	0.13	
29-Mar-17	72	63	85	77	72	86	0.00	0.13	
30-Mar-17	69	54	83	75	69	81	0.31	0.12	
31-Mar-17	70	59	79	75	70	82	0.53	0.14	
High			88			86			
Low		29			50				
Average	62	50	74	68	62	75			
Days over 95 ^o				0		Total for Month		2.11	3.24
Days below 32 ^o				1		Number of Rain Days		8.00	
						Historic Average		5.46	
						Deviation from Average		-3.35	
						Net Gain/loss (Rain - ET)		-1.13	

SUNSHINE HOURS

Year Cumulative	
Rain	ET
10.7	7.0
23.0	
15.4	
-4.7	
	3.7

April Daily Weather Data

Date	Temperature						Precipitation	
	Air Temp 6 ft			Soil Temp 4 inch			Rain	Evapo Trans
	Avg	Min	Max	Avg	Min	Max	Inches	Inches
1-Apr-17	68	54	84	74	66	83	0.00	0.14
2-Apr-17	71	56	87	76	68	85	0.00	0.15
3-Apr-17	68	60	82	72	69	77	1.02	0.08
4-Apr-17	72	63	82	75	69	83	0.03	0.15
5-Apr-17	73	65	80	74	72	76	1.03	0.07
6-Apr-17	61	52	70	69	64	75	0.00	0.14
7-Apr-17	57	46	68	67	60	75	0.00	0.13
8-Apr-17	58	42	72	68	60	79	0.00	0.12
9-Apr-17	62	44	79	71	62	81	0.00	0.14
10-Apr-17	67	51	82	73	65	83	0.00	0.15
11-Apr-17	69	55	83	75	68	83	0.00	0.14
12-Apr-17	69	58	82	75	70	81	0.00	0.13
13-Apr-17	69	55	83	76	69	85	0.00	0.15
14-Apr-17	70	56	82	77	70	85	0.00	0.15
15-Apr-17	71	60	82	77	71	83	0.00	0.15
16-Apr-17	71	59	83	78	71	86	0.00	0.15
17-Apr-17	72	59	84	79	73	88	0.00	0.14
18-Apr-17	73	60	86	80	74	89	0.00	0.16
19-Apr-17	75	63	87	82	75	91	0.00	0.17
20-Apr-17	74	61	87	82	75	90	0.00	0.15
21-Apr-17	73	60	86	82	75	91	0.00	0.15
22-Apr-17	72	61	85	82	76	89	0.00	0.15
23-Apr-17	68	58	79	78	74	82	0.04	0.1
24-Apr-17	60	54	68	73	70	76	0.00	0.09
25-Apr-17	67	53	80	76	68	86	0.00	0.15
26-Apr-17	71	55	82	79	71	88	0.00	0.16
27-Apr-17	76	70	82	79	77	81	0.00	0.09
28-Apr-17	79	69	90	82	76	89	0.00	0.16
29-Apr-17	77	67	87	82	78	88	0.00	0.15
30-Apr-17	77	68	88	83	77	89	0.00	0.16
High			90			91		
Low		42			60			
Average	70	58	82	77	70	84		
Days over 95 ^o	0			Total for Month			2.12	4.12
				Number of Rain Days			4.00	
Days below 32 ^o	0			Historic Average			4.36	
				Deviation from Average			-2.24	
				Net Gain/loss (Rain - ET)				-2

Year Cumulative	
Rain	ET
12.8	11.2
27.0	
19.8	
-7.0	
	1.7

May Daily Weather Data

Temperature							Precipitation	
Date	Air Temp 6 ft			Soil Temp 4 inch			Rain	Evapo Trans
	Avg	Min	Max	Avg	Min	Max	Inches	Inches
1-May-17	71	55	79	80	76	83	0.00	0.11
2-May-17	69	50	85	79	71	89	0.00	0.16
3-May-17	74	54	89	81	73	90	0.00	0.16
4-May-17	66	56	74	75	70	81	1.61	0.09
5-May-17	57	50	65	67	64	71	0.00	0.09
6-May-17	62	48	76	69	60	79	0.00	0.15
7-May-17	69	55	83	74	65	85	0.00	0.17
8-May-17	69	55	83	78	68	88	0.00	0.17
9-May-17	73	56	88	80	71	90	0.00	0.17
10-May-17	76	60	90	82	74	92	0.00	0.18
11-May-17	73	61	86	82	76	90	0.00	0.16
12-May-17	71	64	85	81	75	88	0.42	0.14
13-May-17	70	64	82	78	73	85	0.42	0.14
14-May-17	75	65	86	80	72	90	0.08	0.18
15-May-17	76	63	89	83	74	92	0.00	0.18
16-May-17	79	64	93	84	76	94	0.03	0.2
17-May-17	79	67	91	84	78	92	0.00	0.18
18-May-17	78	69	88	84	79	91	0.00	0.15
19-May-17	79	69	89	85	79	91	0.00	0.17
20-May-17	81	73	91	85	81	90	0.00	0.14
21-May-17	74	66	81	80	76	83	1.11	0.11
22-May-17	77	69	86	81	76	87	0.00	0.15
23-May-17	76	72	82	79	76	81	0.43	0.11
24-May-17	73	62	82	77	72	81	0.14	0.13
25-May-17	68	57	78	75	68	83	0.00	0.18
26-May-17	73	56	88	79	69	90	0.00	0.18
27-May-17	76	61	88	82	73	92	0.00	0.19
28-May-17	80	73	92	85	79	94	0.00	0.17
29-May-17	80	73	90	85	80	92	0.00	0.17
30-May-17	80	74	88	85	81	92	0.00	0.15
31-May-17	77	72	87	85	81	90	0.04	0.12
High			93			94		
Low		48			60			
Average	74	62	85	80	74	88		
				Total for Month			4.28	4.75
Days over 95 ^o				0	Number of Rain Days			9.00
Days of 100 ^o				0	Historic Average			3.50
Days below 32 ^o				0	Deviation from Average			0.78
				Net Gain/loss (Rain - ET)				-0.47

Year Cumulative	
Rain	ET
17.1	15.9
36.0	
23.3	
-6.2	
	1.2

June Daily Weather Data

Temperature							Precipitation	
Date	Air Temp 6 ft			Soil Temp 4 inch			Rain	Evapo Trans
	Avg	Min	Max	Avg	Min	Max	Inches	Inches
1-Jun-17	78	72	84	83	79	86	0.01	0.11
2-Jun-17	77	71	88	83	79	91	2.03	0.14
3-Jun-17	77	70	86	83	77	90	0.01	0.18
4-Jun-17	77	72	86	83	78	89	0.01	0.13
5-Jun-17	77	72	86	82	78	86	0.23	0.13
6-Jun-17	74	71	79	79	77	82	0.86	0.07
7-Jun-17	73	67	82	79	76	85	0.36	0.12
8-Jun-17	73	66	84	81	73	90	0.00	0.18
9-Jun-17	76	63	87	83	74	93	0.00	0.19
10-Jun-17	79	66	90	85	76	95	0.00	0.19
11-Jun-17	76	71	82	82	80	85	1.62	0.1
12-Jun-17	77	72	82	82	78	87	0.00	0.12
13-Jun-17	73	71	83	79	78	84	0.50	0.08
14-Jun-17	76	71	86	82	76	89	0.00	0.15
15-Jun-17	76	69	84	81	78	86	0.03	0.13
16-Jun-17	78	69	88	83	76	92	0.00	0.18
17-Jun-17	78	72	86	84	79	89	0.00	0.13
18-Jun-17	78	69	91	85	78	96	0.62	0.18
19-Jun-17	77	71	86	83	79	88	0.08	0.11
20-Jun-17	73	72	74	79	77	81	1.56	0.05
21-Jun-17	77	73	81	78	77	81	0.48	0.06
22-Jun-17	82	75	90	82	77	88	0.00	0.17
23-Jun-17	82	75	91	85	78	93	0.00	0.21
24-Jun-17	82	73	91	86	79	95	0.00	0.19
25-Jun-17	77	72	87	83	79	90	2.07	0.1
26-Jun-17	77	67	88	83	76	91	0.01	0.19
27-Jun-17	78	72	87	84	79	89	0.00	0.14
28-Jun-17	76	70	86	83	79	90	0.88	0.13
29-Jun-17	77	73	82	81	78	86	0.10	0.1
30-Jun-17	79	73	88	83	79	89	0.07	0.15
High			91			96		
Low		63			73			
Average	77	71	86	82	78	89		
				Total for Month			11.53	4.11
Days over 95 ^o				0			Number of Rain Days	19.00
Days of 100 ^o				0			Historic Average	4.82
Days below 32 ^o				0			Deviation from Average	6.71
				Net Gain/loss (Rain - ET)				7.42

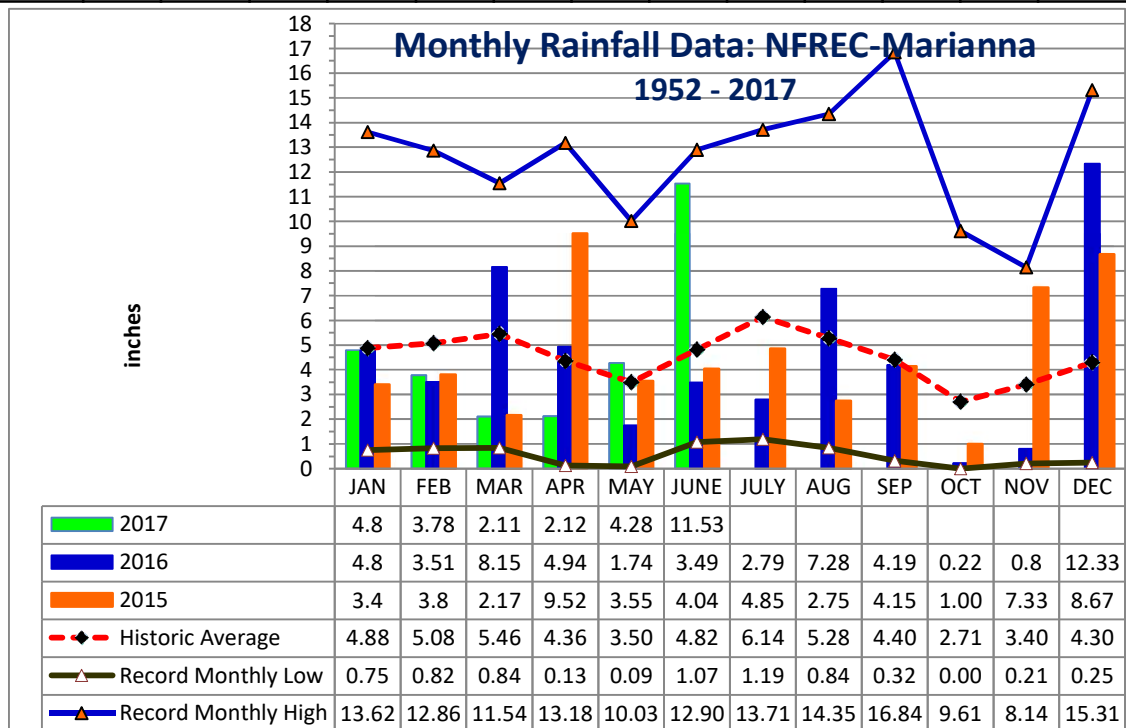
Year Cumulative	
Rain	ET
28.6	20.0
55.0	
28.1	
0.5	
	8.6



YEAR	JAN	FEB	MAR	APR	MAY	JUNE	JULY	AUG	SEP	OCT	NOV	DEC	TOTAL
1952	1.14	8.88	4.48	2.11	5.13	1.12	5.95	8.81	3.09	0.65	3.26	3.42	48.04
1953	4.84	7.26	3.03	8.43	2.43	3.97	6.84	1.63	6.33	0.65	4.09	15.31	64.81
1954	1.33	3.49	2.62	2.58	1.96	3.46	3.28	2.84	1.72	1.30	2.66	1.44	28.68
1955	3.66	1.83	0.84	5.80	3.03	1.62	6.75	3.75	2.44	2.10	0.72	0.77	33.31
1956	3.59	5.18	3.77	2.04	4.03	5.45	8.52	4.09	6.44	5.08	0.28	3.34	51.81
1957	0.75	2.65	5.17	5.74	4.60	5.75	9.83	5.91	16.84	1.31	6.24	2.22	67.01
1958	4.48	3.61	4.73	7.22	5.57	6.00	8.39	3.45	3.68	1.88	1.75	2.32	53.08
1959	3.67	7.06	8.50	5.73	6.95	3.77	4.83	3.67	3.07	7.93	0.21	1.53	56.92
1960	3.36	7.08	3.41	6.80	3.20	4.75	4.97	4.80	6.22	2.00	0.47	2.35	49.41
1961	4.23	4.15	3.64	5.57	3.97	4.41	3.99	11.09	2.60	0.00	2.84	6.23	52.72
1962	1.72	2.80	8.13	3.28	2.86	3.67	7.97	6.07	3.07	2.82	5.16	1.67	49.22
1963	7.31	3.02	3.18	1.36	3.50	7.99	5.16	1.50	5.25	0.01	4.22	6.05	48.55
1964	10.80	6.81	6.41	9.47	2.23	5.68	9.22	3.07	7.47	9.61	3.35	6.44	80.56
1965	2.63	6.09	5.51	3.96	0.18	9.60	3.26	4.18	4.48	3.41	1.81	3.60	48.71
1966	5.56	9.84	2.57	0.77	5.80	3.13	3.25	9.82	5.09	1.41	2.03	4.62	53.89
1967	8.27	3.32	2.19	0.13	2.61	7.02	6.49	3.58	1.40	1.86	2.40	7.98	47.25
1968	1.28	2.30	3.40	2.50	3.39	1.18	5.45	4.61	2.99	1.41	5.11	5.34	38.96
1969	1.68	3.49	7.08	4.54	3.01	1.71	13.18	3.05	5.64	1.50	1.22	3.80	49.90
1970	4.16	9.20	8.86	1.83	1.81	3.69	5.04	8.01	0.49	4.40	2.21	3.13	52.83
1971	1.97	6.11	7.15	3.17	3.03	3.85	5.20	6.76	2.47	1.84	1.94	3.70	47.19
1972	3.62	6.03	6.41	0.38	2.87	8.89	3.78	5.39	2.14	2.44	3.29	3.77	49.01
1973	8.14	7.71	8.38	7.60	6.87	3.63	11.12	4.51	5.40	0.27	3.64	5.33	72.60
1974	5.24	5.80	2.66	3.40	3.78	1.56	3.29	8.01	4.68	0.84	2.14	2.89	44.29
1975	10.21	6.36	4.91	10.35	3.97	4.10	13.71	5.40	3.81	4.35	2.89	3.28	73.34
1976	6.99	1.50	4.89	1.87	8.89	3.08	3.03	3.47	5.47	6.18	5.72	3.97	55.06
1977	3.47	1.81	6.52	0.88	0.60	6.36	3.55	5.22	9.83	2.59	8.14	4.19	53.16
1978	7.28	3.28	7.25	4.65	6.73	3.79	7.25	4.90	0.98	0.20	6.01	3.65	55.97
1979	7.30	7.78	3.26	7.75	6.22	1.31	7.49	6.30	11.51	0.53	4.47	2.84	66.76
1980	6.58	2.96	11.54	9.29	4.50	3.50	5.87	2.53	4.56	4.71	1.52	0.25	57.81
1981	1.70	5.32	5.94	3.03	2.73	4.74	4.02	2.53	2.44	1.75	0.85	4.94	39.99
1982	4.17	5.61	2.91	5.93	5.39	3.00	7.51	4.42	6.00	2.65	2.34	9.14	59.07
1983	4.92	6.84	8.53	7.88	2.27	5.66	1.19	2.53	8.97	3.52	5.90	7.65	65.86
1984	5.49	5.01	8.62	6.29	2.50	5.31	12.01	5.76	0.32	1.60	1.63	0.80	55.34
1985	4.60	4.46	2.60	1.18	4.44	5.68	3.68	5.58	1.42	7.42	7.91	5.34	54.31
1986	5.68	10.27	3.21	0.83	2.26	1.85	2.75	4.12	2.35	2.22	4.40	5.68	45.62
1987	8.62	5.52	7.23	0.40	4.46	5.43	5.51	4.18	2.27	0.06	4.02	0.81	48.51
1988	5.57	6.40	8.41	2.69	0.28	1.07	5.43	3.98	5.53	1.98	3.28	1.23	45.85
1989	1.59	2.74	4.96	3.63	7.01	12.90	11.19	3.06	3.36	7.20	4.71	5.45	67.80
1990	5.26	4.57	4.55	3.00	3.22	4.02	3.65	2.91	0.85	1.34	0.93	3.42	37.72
1991	13.62	3.44	9.00	5.32	10.03	5.30	10.67	3.89	1.53	1.17	1.60	3.00	68.57
1992	8.37	6.29	7.92	2.50	1.41	11.16	8.69	6.72	3.19	2.08	7.40	2.93	68.66
1993	12.00	3.38	7.41	1.50	1.60	4.18	6.68	3.89	3.44	2.90	2.27	3.63	52.88
1994	8.64	2.53	6.25	4.34	1.82	11.41	10.95	9.08	6.44	7.62	2.53	3.79	75.40
1995	5.23	3.13	4.29	4.35	3.90	5.56	3.02	6.16	0.86	7.51	4.12	1.78	49.91
1996	3.64	5.99	8.47	5.76	1.50	5.43	2.83	14.28	5.32	3.81	2.01	3.65	62.69

YEAR	JAN	FEB	MAR	APR	MAY	JUNE	JULY	AUG	SEP	OCT	NOV	DEC	TOTAL
1997	6.68	5.29	2.63	10.08	5.91	6.41	5.73	4.65	3.78	2.10	6.85	8.44	68.55
1998	6.28	8.30	6.11	2.24	1.45	2.35	4.37	2.20	16.31	0.30	2.05	1.98	53.94
1999	6.95	2.90	3.61	1.50	6.71	8.99	8.64	4.02	4.33	3.13	3.56	2.50	56.84
2000	3.78	4.96	4.48	4.05	0.09	4.00	3.40	7.15	7.20	0.71	4.43	3.21	47.46
2001	2.16	0.82	10.00	1.99	2.52	8.24	4.66	8.21	1.90	1.51	1.70	0.78	44.49
2002	3.82	2.44	5.51	5.78	2.19	3.45	10.34	3.30	11.83	7.36	7.76	5.99	69.77
2003	2.30	7.03	8.18	4.89	3.11	6.11	7.84	5.99	2.39	3.58	3.04	3.12	57.58
2004	3.19	7.66	0.90	4.37	1.19	6.66	4.92	1.67	10.01	3.89	4.97	3.25	52.68
2005	3.33	2.31	9.05	7.04	1.67	7.47	9.44	11.71	1.62	0.03	3.15	4.81	61.63
2006	4.82	3.90	0.91	1.61	4.97	1.99	2.22	5.18	0.91	3.09	3.41	5.43	38.44
2007	5.99	2.45	1.10	0.99	1.57	3.97	3.94	4.18	1.27	4.79	1.89	4.03	36.17
2008	4.26	9.00	9.11	4.28	1.46	8.64	4.02	9.29	0.74	5.11	3.18	8.23	67.32
2009	2.33	3.26	7.11	7.73	9.17	2.78	3.88	3.19	5.22	3.39	2.35	9.57	59.98
2010	7.53	3.99	3.41	4.01	5.09	2.92	2.31	0.84	1.33	0.22	5.82	0.63	38.10
2011	4.33	4.04	5.00	0.92	0.78	1.66	5.11	1.87	2.26	1.84	1.94	3.75	33.50
2012	3.79	7.49	5.94	3.17	1.42	7.35	5.05	14.35	5.17	1.75	1.30	4.10	60.88
2013	1.05	12.86	2.99	3.54	0.64	3.72	13.39	13.17	2.14	1.96	3.91	4.44	63.81
2014	2.15	4.99	7.70	13.18	4.03	2.32	5.69	2.55	6.03	2.03	5.93	5.32	61.92
2015	3.4	3.8	2.17	9.52	3.55	4.04	4.85	2.75	4.15	1.00	7.33	8.67	55.23
2016	4.8	3.51	8.15	4.94	1.74	3.49	2.79	7.28	4.19	0.22	0.8	12.33	54.24
2017	4.8	3.78	2.11	2.12	4.28	11.5							28.62

Deviation from the Average Monthly Rainfall													
Inches	-0.08	-1.30	-3.35	-2.24	0.78	6.71	-6.14	-5.28	-4.40	-2.71	-3.40	-4.30	-25.71
Monthly Average Rainfall, 1952-2016													
AVG.	4.88	5.08	5.46	4.36	3.50	4.82	6.14	5.28	4.40	2.71	3.40	4.30	54.33
% of Annual Rainfall Occuring each Month													
	9.0%	9.4%	10.1%	8.1%	6.5%	8.9%	11.4%	9.8%	8.2%	5.0%	6.3%	8.0%	
Record High/Low for the Month													
LOW	0.75	0.82	0.84	0.13	0.09	1.07	1.19	0.84	0.32	0.00	0.21	0.25	28.68
HIGH	13.62	12.86	11.54	13.18	10.03	12.90	13.71	14.35	16.84	9.61	8.14	15.31	80.56



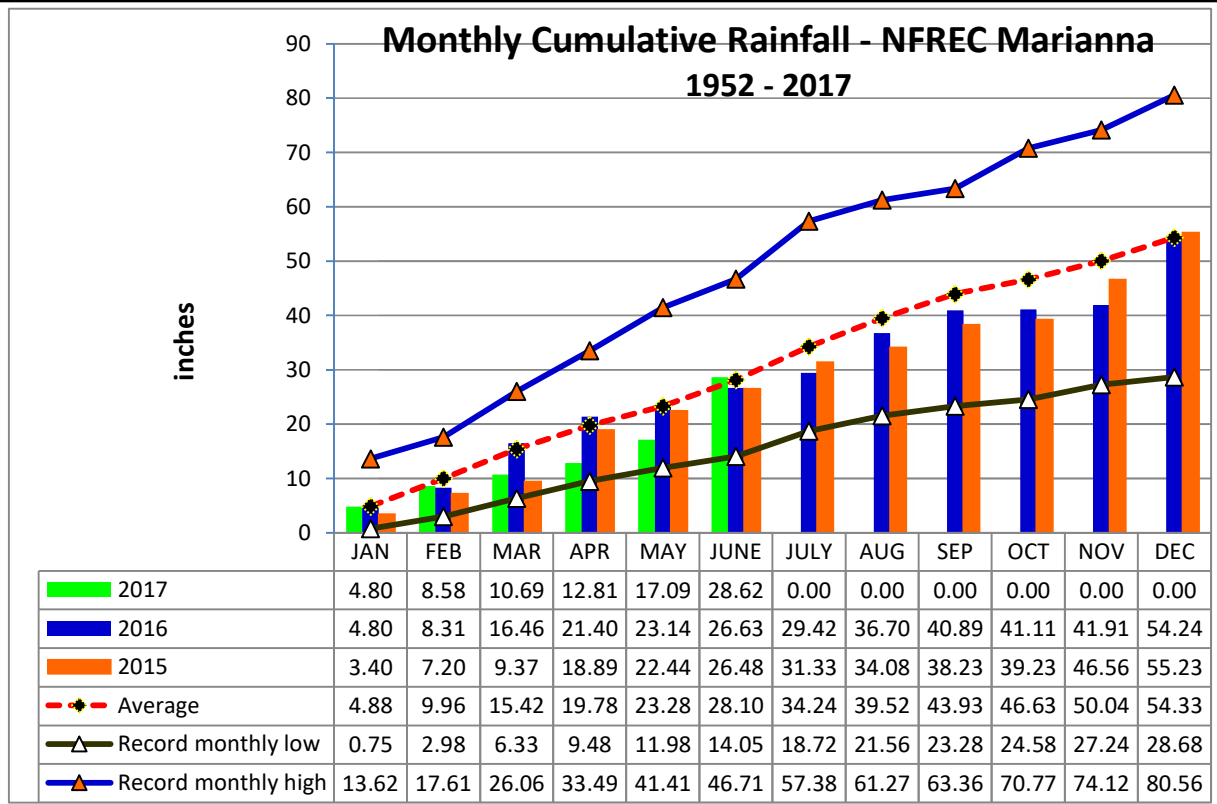
Jackson County
Monthly Cumulative Rainfall, 1952 -2017
North Florida Research & Education Center Marianna,



YEAR	JAN	FEB	MAR	APR	MAY	JUNE	JULY	AUG	SEP	OCT	NOV	DEC
1952	1.14	10.02	14.50	16.61	21.74	22.86	28.81	37.62	40.71	41.36	44.62	48.04
1953	4.84	12.10	15.13	23.56	25.99	29.96	36.80	38.43	44.76	45.41	49.50	64.81
1954	1.33	4.82	7.44	10.02	11.98	15.44	18.72	21.56	23.28	24.58	27.24	28.68
1955	3.66	5.49	6.33	12.13	15.16	16.78	23.53	27.28	29.72	31.82	32.54	33.31
1956	3.59	8.77	12.54	14.58	18.61	24.06	32.58	36.67	43.11	48.19	48.47	51.81
1957	0.75	3.40	8.57	14.31	18.91	24.66	34.49	40.40	57.24	58.55	64.79	67.01
1958	4.48	8.09	12.82	20.04	25.61	31.61	40.00	43.45	47.13	49.01	50.76	53.08
1959	3.67	10.73	19.23	24.96	31.91	35.68	40.51	44.18	47.25	55.18	55.39	56.92
1960	3.36	10.44	13.85	20.65	23.85	28.60	33.57	38.37	44.59	46.59	47.06	49.41
1961	4.23	8.38	12.02	17.59	21.56	25.97	29.96	41.05	43.65	43.65	46.49	52.72
1962	1.72	4.52	12.65	15.93	18.79	22.46	30.43	36.50	39.57	42.39	47.55	49.22
1963	7.31	10.33	13.51	14.87	18.37	26.36	31.52	33.02	38.27	38.28	42.50	48.55
1964	10.80	<u>17.61</u>	24.02	<u>33.49</u>	35.72	41.40	50.62	53.69	61.16	<u>70.77</u>	<u>74.12</u>	<u>80.56</u>
1965	2.63	8.72	14.23	18.19	18.37	27.97	31.23	35.41	39.89	43.30	45.11	48.71
1966	5.56	15.40	17.97	18.74	24.54	27.67	30.92	40.74	45.83	47.24	49.27	53.89
1967	8.27	11.59	13.78	13.91	16.52	23.54	30.03	33.61	35.01	36.87	39.27	47.25
1968	1.28	3.58	6.98	9.48	12.87	14.05	19.50	24.11	27.10	28.51	33.62	38.96
1969	1.68	5.17	12.25	16.79	19.80	21.51	34.69	37.74	43.38	44.88	46.10	49.90
1970	4.16	13.36	22.22	24.05	25.86	29.55	34.59	42.60	43.09	47.49	49.70	52.83
1971	1.97	8.08	15.23	18.40	21.43	25.28	30.48	37.24	39.71	41.55	43.49	47.19
1972	3.62	9.65	16.06	16.44	19.31	28.20	31.98	37.37	39.51	41.95	45.24	49.01
1973	8.14	15.85	24.23	31.83	38.70	42.33	53.45	57.96	<u>63.36</u>	63.63	67.27	72.60
1974	5.24	11.04	13.70	17.10	20.88	22.44	25.73	33.74	38.42	39.26	41.40	44.29
1975	10.21	16.57	21.48	31.83	35.80	39.90	53.61	59.01	62.82	67.17	70.06	73.34
1976	6.99	8.49	13.38	15.25	24.14	27.22	30.25	33.72	39.19	45.37	51.09	55.06
1977	3.47	5.28	11.80	12.68	13.28	19.64	23.19	28.41	38.24	40.83	48.97	53.16
1978	7.28	10.56	17.81	22.46	29.19	32.98	40.23	45.13	46.11	46.31	52.32	55.97
1979	7.30	15.08	18.34	26.09	32.31	33.62	41.11	47.41	58.92	59.45	63.92	66.76
1980	6.58	9.54	21.08	30.37	34.87	38.37	44.24	46.77	51.33	56.04	57.56	57.81
1981	1.70	7.02	12.96	15.99	18.72	23.46	27.48	30.01	32.45	34.20	35.05	39.99
1982	4.17	9.78	12.69	18.62	24.01	27.01	34.52	38.94	44.94	47.59	49.93	59.07
1983	4.92	11.76	20.29	28.17	30.44	36.10	37.29	39.82	48.79	52.31	58.21	65.86
1984	5.49	10.50	19.12	25.41	27.91	33.22	45.23	50.99	51.31	52.91	54.54	55.34
1985	4.60	9.06	11.66	12.84	17.28	22.96	26.64	32.22	33.64	41.06	48.97	54.31
1986	5.68	15.95	19.16	19.99	22.25	24.10	26.85	30.97	33.32	35.54	39.94	45.62
1987	8.62	14.14	21.37	21.77	26.23	31.66	37.17	41.35	43.62	43.68	47.70	48.51
1988	5.57	11.97	20.38	23.07	23.35	24.42	29.85	33.83	39.36	41.34	44.62	45.85
1989	1.59	4.33	9.29	12.92	19.93	32.83	44.02	47.08	50.44	57.64	62.35	67.80
1990	5.26	9.83	14.38	17.38	20.60	24.62	28.27	31.18	32.03	33.37	34.30	37.72
1991	<u>13.62</u>	17.06	<u>26.06</u>	31.38	<u>41.41</u>	<u>46.71</u>	<u>57.38</u>	<u>61.27</u>	62.80	63.97	65.57	68.57
1992	8.37	14.66	22.58	25.08	26.49	37.65	46.34	53.06	56.25	58.33	65.73	68.66
1993	12.00	15.38	22.79	24.29	25.89	30.07	36.75	40.64	44.08	46.98	49.25	52.88
1994	8.64	11.17	17.42	21.76	23.58	34.99	45.94	55.02	61.46	69.08	71.61	75.40
1995	5.23	8.36	12.65	17.00	20.90	26.46	29.48	35.64	36.50	44.01	48.13	49.91
1996	3.64	9.63	18.10	23.86	25.36	30.79	33.62	47.90	53.22	57.03	59.04	62.69

YEAR	JAN	FEB	MAR	APR	MAY	JUNE	JULY	AUG	SEP	OCT	NOV	DEC
1997	6.68	11.97	14.60	24.68	30.59	37.00	42.73	47.38	51.16	53.26	60.11	68.55
1998	6.28	14.58	20.69	22.93	24.38	26.73	31.10	33.30	49.61	49.91	51.96	53.94
1999	6.95	9.85	13.46	14.96	21.67	30.66	39.30	43.32	47.65	50.78	54.34	56.84
2000	3.78	8.74	13.22	17.27	17.36	21.36	24.76	31.91	39.11	39.82	44.25	47.46
2001	2.16	2.98	12.98	14.97	17.49	25.73	30.39	38.60	40.50	42.01	43.71	44.49
2002	3.82	6.26	11.77	17.55	19.74	23.19	33.53	36.83	48.66	56.02	63.78	69.77
2003	2.30	9.33	17.51	22.40	25.51	31.62	39.46	45.45	47.84	51.42	54.46	57.58
2004	3.19	10.85	11.75	16.12	17.31	23.97	28.89	30.56	40.57	44.46	49.43	52.68
2005	3.33	5.64	14.69	21.73	23.40	30.87	40.31	52.02	53.64	53.67	56.82	61.63
2006	4.82	8.72	9.63	11.24	16.21	18.20	20.42	25.60	26.51	29.60	33.01	38.44
2007	5.99	8.44	9.54	10.53	12.10	16.07	20.01	24.19	25.46	30.25	32.14	36.17
2008	4.26	13.26	22.37	26.65	28.11	36.75	40.77	50.06	50.80	55.91	59.09	67.32
2009	2.33	5.59	12.70	20.43	29.60	32.38	36.26	39.45	44.67	48.06	50.41	59.98
2010	7.53	11.52	14.93	18.94	24.03	26.95	29.26	30.10	31.43	31.65	37.47	38.10
2011	4.33	8.37	13.37	14.29	15.07	16.73	21.84	23.71	25.97	27.81	29.75	33.50
2012	3.79	11.28	17.22	20.39	21.81	29.16	34.21	48.56	53.73	55.48	56.78	60.88
2013	1.05	13.91	16.90	20.44	21.08	24.80	38.19	51.36	53.50	55.46	59.37	63.81
2014	2.15	7.14	14.84	28.02	32.05	34.37	40.06	42.61	48.64	50.67	56.60	61.92
2015	3.40	7.20	9.37	18.89	22.44	26.48	31.33	34.08	38.23	39.23	46.56	55.23
2016	4.80	8.31	16.46	21.40	23.14	26.63	29.42	36.70	40.89	41.11	41.91	54.24
2017	4.80	8.58	10.69	12.81	17.09	28.62	0.00	0.00	0.00	0.00	0.00	0.00

Deviation from the Average Accumulation												
Inches	-0.08	-1.38	-4.73	-6.97	-6.19	0.52	#VALUE!	#VALUE!	#VALUE!	#VALUE!	#VALUE!	#VALUE!
Average Accumulation, 1952-2016												
Inches	4.88	9.96	15.42	19.78	23.28	28.10	34.24	39.52	43.93	46.63	50.04	54.33
Record High/Low Accumulation												
LOW	0.75	2.98	6.33	9.48	11.98	14.05	18.72	21.56	23.28	24.58	27.24	28.68
HIGH	13.62	17.61	26.06	33.49	41.41	46.71	57.38	61.27	63.36	70.77	74.12	80.56



2017 UF/IFAS FAWN Panhandle Weather Station Summary

FAWN Station	Data	Jan	Feb	Mar	Apr	May	June	Total
Monticello	Rain	4.5	1.6	1.2	2.5	5.8	7.4	22.9
	Hist Avg	4.5	4.6	6.1	4.1	3.4	5.7	28.4
	Deviation	0.0	-3.1	-5.0	-1.6	2.4	1.7	-5.5
Quincy	Rain	5.9	2.9	1.2	3.4	6.0	9.7	29.2
	Hist Avg	5.0	4.3	5.6	3.7	4.2	5.2	28.0
	Deviation	0.9	-1.4	-4.4	-0.3	1.8	4.5	1.2
Carrabelle	Rain	4.2	3.9	1.7	0.6	2.6	16.8	29.7
	Hist Avg	3.8	3.7	4.9	3.0	2.7	5.3	23.4
	Deviation	0.4	0.2	-3.2	-2.5	-0.2	11.5	6.3
Marianna	Rain	4.8	3.8	2.1	2.1	4.3	11.5	28.6
	Hist Avg	4.9	5.1	5.5	4.4	3.5	4.8	28.1
	Deviation	-0.1	-1.3	-3.3	-2.2	0.8	6.7	0.5
DeFuniak	Rain	5.6	4.5	2.1	3.9	4.6	12.1	32.6
	Hist Avg	4.9	5.4	5.6	3.9	4.5	7.1	31.5
	Deviation	0.7	-0.9	-3.6	0.0	0.0	5.0	1.2
Jay	Rain	3.9	3.2	2.6	3.1	7.3	20.3	40.4
	Hist Avg	5.5	5.3	6.6	4.8	4.8	5.8	32.8
	Deviation	-1.6	-2.1	-4.0	-1.8	2.5	14.5	7.6
6 Station Average		4.8	3.3	1.8	2.6	5.1	13.0	30.6

28.7
1.9

2017 Panhandle FAWN Rainfall Jan-June Totals

