



## Jackson County 2017 Weather Data

*66 Years of Weather Data Recorded at the UF/IFAS Marianna North Florida Research and Education Center*



**Doug Mayo**  
Jackson County Extension Director

1952-2008 Rainfall Data compiled by  
Ed Jowers, Emeritus County Extension Director

Data provided by Florida Automated Weather Station (FAWN)  
UF/IFAS North Florida Research and Education Center  
Greenwood, Florida



<http://fawn.ifas.ufl.edu/station.php?id=130>

Tower Name	Tower Number	Latitude Degree, Minutes	Latitude Degrees, Minutes, Seconds	Latitude Degrees Decimal	Longitude Degree, Minutes	Longitude Degrees, Minutes, Seconds	Longitude Degrees, Minutes, Seconds	Elevation Feet
Marianna	130.00	N 30°51.000'	N 30°50'00.00"	N 30.85000°	-85°09.910'	-85°09'54.60"	-85.16516°	115'

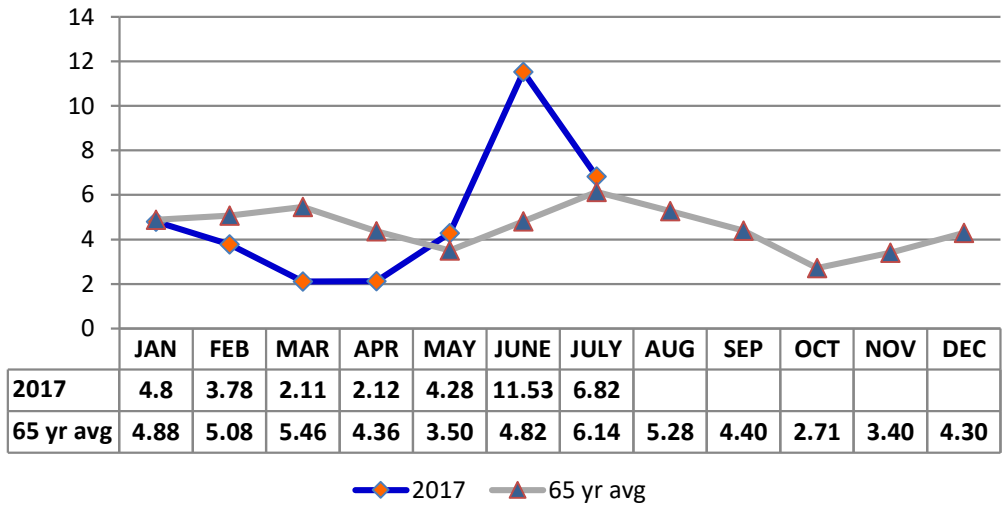
## 2017 UF/IFAS FAWN Marianna Weather Summary

Month	6' Air Temp			Soil Temp			Rainfall Inches	Dev from 64 yr Avg
	High	Low	Avg	High	Low	Avg		
January	70	27	48	65	39	52	4.8	-0.1
February	83	35	61	78	54	65	3.8	-1.3
March	88	29	62	86	50	68	2.1	-3.3
April	90	42	70	91	60	77	2.1	-2.2
May	93	48	74	94	60	80	4.3	0.8
June	91	63	77	96	73	82	11.5	6.7
July	94	67	80	101	78	87	6.8	0.7
2017	94	27	67	101	39	73	35.4	1.2

Data: UF/IFAS Florida Automated Weather Network Marianna Station

Total days in 2017 <32°      8      Total days in 2017 >95°      0

### Monthly Rainfall @ Marianna FAWN



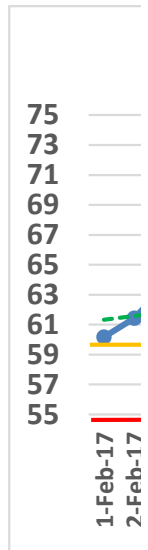
# January Daily Weather Data

Date	Temperature						Precipitation		
	Air Temp 6 ft			Soil Temp 4 inch			Rain	Evapo Trans	
	Avg	Min	Max	Avg	Min	Max	Inches	Inches	
1-Jan-16	52	47	57	61	56	64	0.13	0.04	
2-Jan-16	47	43	50	55	53	58	0.00	0.04	
3-Jan-16	47	43	52	54	52	58	0.00	0.04	
4-Jan-16	47	39	57	53	48	59	0.00	0.04	
5-Jan-16	40	33	49	49	45	56	0.00	0.03	
6-Jan-16	44	36	54	50	45	59	0.00	0.04	
7-Jan-16	51	42	62	54	48	60	0.82	0.05	
8-Jan-16	56	51	59	57	54	60	0.22	0.04	
9-Jan-16	59	55	63	59	57	60	0.48	0.04	
10-Jan-16	48	37	62	54	47	60	0.00	0.06	
11-Jan-16	38	30	50	49	43	57	0.00	0.03	
12-Jan-16	42	29	58	48	43	56	0.00	0.04	
13-Jan-16	45	33	60	49	43	58	0.00	0.04	
14-Jan-16	44	32	55	48	44	52	0.00	0.04	
15-Jan-16	56	47	66	55	50	62	1.55	0.05	
16-Jan-16	56	50	66	57	53	65	0.00	0.05	
17-Jan-16	49	41	56	53	48	59	0.55	0.04	
18-Jan-16	43	33	53	49	44	57	0.00	0.04	
19-Jan-16	38	30	50	47	42	55	0.00	0.04	
20-Jan-16	46	29	63	49	41	57	0.00	0.05	
21-Jan-16	55	49	59	53	49	57	0.09	0.05	
22-Jan-16	52	36	61	55	48	61	0.57	0.06	
23-Jan-16	37	32	42	46	42	50	0.00	0.04	
24-Jan-16	38	27	55	46	39	55	0.00	0.04	
25-Jan-16	47	29	65	49	41	59	0.00	0.06	
26-Jan-16	56	42	69	53	47	59	0.00	0.06	
27-Jan-16	56	51	60	56	54	59	0.04	0.05	
28-Jan-16	48	40	51	53	49	55	0.35	0.04	
29-Jan-16	49	37	65	51	45	60	0.00	0.06	
30-Jan-16	53	37	70	53	46	63	0.00	0.07	
31-Jan-16	58	49	69	56	52	62	0.00	0.06	
<b>High</b>			<b>70</b>			<b>65</b>			
<b>Low</b>		<b>27</b>			<b>39</b>				
<b>Average</b>	<b>48</b>	39	58	<b>52</b>	47	59			
Days over 95 <sup>o</sup>	0			<b>Total for Month</b>		<b>4.80</b>	1.43	4.8	1.4
				<b>Number of Rain Days</b>		10.00			
Days below 32 <sup>o</sup>	7			<b>Historic Average</b>		4.88		4.9	-0.1
				<b>Deviation from Average</b>		-0.08			
				<b>Net Gain/loss (Rain - ET)</b>			<b>3.37</b>		

<b>Year Cumulative</b>	
<b>Rain</b>	<b>ET</b>
4.8	1.4
10.0	
4.9	
-0.1	
	3.4

# February Daily Weather Data

Date	Temperature						Precipitation	
	Air Temp 6 ft			Soil Temp 4 inch			Rain	Evapo Trans
	Avg	Min	Max	Avg	Min	Max	Inches	Inches
1-Feb-17	59	47	73	60	55	66	0.00	0.07
2-Feb-17	60	46	75	61	56	68	0.00	0.08
3-Feb-17	59	48	69	64	61	68	0.00	0.07
4-Feb-17	48	37	60	60	55	66	0.00	0.06
5-Feb-17	53	39	69	60	54	67	0.00	0.07
6-Feb-17	62	49	77	64	59	71	0.00	0.08
7-Feb-17	62	51	77	64	61	69	1.83	0.08
8-Feb-17	67	58	74	65	62	69	0.04	0.07
9-Feb-17	59	46	70	64	59	68	0.00	0.09
10-Feb-17	52	38	67	60	54	67	0.00	0.08
11-Feb-17	60	41	77	61	54	69	0.00	0.09
12-Feb-17	70	62	80	67	63	72	0.00	0.09
13-Feb-17	63	48	74	67	64	73	0.00	0.09
14-Feb-17	61	44	78	65	59	73	0.00	0.09
15-Feb-17	62	49	74	67	63	72	0.00	0.09
16-Feb-17	50	40	64	63	58	69	0.00	0.08
17-Feb-17	54	35	71	62	55	69	0.00	0.08
18-Feb-17	60	53	70	64	61	69	0.11	0.08
19-Feb-17	64	55	77	67	63	75	0.00	0.1
20-Feb-17	65	50	80	68	61	75	0.00	0.1
21-Feb-17	62	56	72	66	64	68	1.21	0.06
22-Feb-17	63	59	71	66	63	71	0.59	0.07
23-Feb-17	66	57	77	68	63	76	0.00	0.1
24-Feb-17	67	54	83	70	63	78	0.00	0.11
25-Feb-17	66	53	75	70	65	75	0.00	0.1
26-Feb-17	54	39	68	65	59	73	0.00	0.09
27-Feb-17	62	48	75	65	59	70	0.00	0.09
28-Feb-17	68	52	82	68	62	75	0.00	0.11
<b>High</b>			<b>83</b>			<b>78</b>		
<b>Low</b>		<b>35</b>			<b>54</b>			
<b>Average</b>	<b>61</b>	48	74	<b>65</b>	60	71		
Days over 95 <sup>0</sup>			0	<b>Total for Month</b>			<b>3.78</b>	2.37
Days below 32 <sup>0</sup>			0	<b>Number of Rain Days</b>			5.00	
				<b>Historic Average</b>			5.08	
				<b>Deviation from Average</b>			-1.30	
				<b>Net Gain/loss (Rain - ET)</b>				<b>1.41</b>



Year Cumulative	
Rain	ET
8.6	3.8
15.0	
10.0	
-1.4	
	4.8

# March Daily Weather Data

Date	Temperature						Precipitation			
	Air Temp 6 ft			Soil Temp 4 inch			Rain	Evapo Trans		
	Avg	Min	Max	Avg	Min	Max	Inches	Inches		
1-Mar-17	72	63	81	71	67	75	0.00	0.1		
2-Mar-17	59	49	72	68	62	72	0.18	0.1		
3-Mar-17	54	39	67	63	56	71	0.00	0.09		
4-Mar-17	52	35	67	63	56	71	0.00	0.09		
5-Mar-17	58	43	72	63	57	70	0.00	0.09		
6-Mar-17	64	54	75	67	62	73	0.00	0.11		
7-Mar-17	66	55	77	67	62	73	0.03	0.1		
8-Mar-17	64	53	74	69	65	76	0.08	0.1		
9-Mar-17	63	45	80	69	61	77	0.00	0.11		
10-Mar-17	66	53	78	70	66	76	0.01	0.11		
11-Mar-17	60	49	75	69	62	76	0.00	0.1		
12-Mar-17	54	48	63	67	64	72	0.00	0.07		
13-Mar-17	47	45	48	62	58	65	0.41	0.04		
14-Mar-17	49	44	56	58	55	62	0.00	0.07		
15-Mar-17	42	34	52	57	50	65	0.00	0.08		
16-Mar-17	44	29	59	58	50	67	0.00	0.08		
17-Mar-17	54	36	72	62	53	72	0.00	0.1		
18-Mar-17	62	43	78	65	58	73	0.00	0.11		
19-Mar-17	62	47	76	67	61	74	0.00	0.12		
20-Mar-17	63	43	81	68	60	78	0.00	0.12		
21-Mar-17	69	53	85	71	65	80	0.00	0.13		
22-Mar-17	73	61	88	74	68	82	0.00	0.14		
23-Mar-17	66	60	74	72	69	75	0.00	0.08		
24-Mar-17	67	57	79	72	67	80	0.00	0.12		
25-Mar-17	69	59	80	73	68	80	0.00	0.12		
26-Mar-17	69	62	81	74	70	80	0.56	0.11		
27-Mar-17	69	58	82	73	66	81	0.00	0.13		
28-Mar-17	72	64	82	75	69	82	0.00	0.13		
29-Mar-17	72	63	85	77	72	86	0.00	0.13		
30-Mar-17	69	54	83	75	69	81	0.31	0.12		
31-Mar-17	70	59	79	75	70	82	0.53	0.14		
<b>High</b>			<b>88</b>			<b>86</b>				
<b>Low</b>		<b>29</b>			<b>50</b>					
<b>Average</b>	<b>62</b>	50	74	<b>68</b>	62	75				
Days over 95 <sup>0</sup>				0			<b>Total for Month</b>	<b>2.11</b>	3.24	Year Cumulative
Days below 32 <sup>0</sup>				1			<b>Number of Rain Days</b>	8.00		Rain
							<b>Historic Average</b>	5.46		ET
							<b>Deviation from Average</b>	-3.35		10.7
							<b>Net Gain/loss (Rain - ET)</b>	<b>-1.13</b>		7.0
										23.0
										15.4
										-4.7
										3.7

3/1/17 16:00

## April Daily Weather Data

Date	Temperature						Precipitation			
	Air Temp 6 ft			Soil Temp 4 inch			Rain	Evapo Trans		
	Avg	Min	Max	Avg	Min	Max	Inches	Inches		
1-Apr-17	68	54	84	74	66	83	0.00	0.14		
2-Apr-17	71	56	87	76	68	85	0.00	0.15		
3-Apr-17	68	60	82	72	69	77	1.02	0.08		
4-Apr-17	72	63	82	75	69	83	0.03	0.15		
5-Apr-17	73	65	80	74	72	76	1.03	0.07		
6-Apr-17	61	52	70	69	64	75	0.00	0.14		
7-Apr-17	57	46	68	67	60	75	0.00	0.13		
8-Apr-17	58	42	72	68	60	79	0.00	0.12		
9-Apr-17	62	44	79	71	62	81	0.00	0.14		
10-Apr-17	67	51	82	73	65	83	0.00	0.15		
11-Apr-17	69	55	83	75	68	83	0.00	0.14		
12-Apr-17	69	58	82	75	70	81	0.00	0.13		
13-Apr-17	69	55	83	76	69	85	0.00	0.15		
14-Apr-17	70	56	82	77	70	85	0.00	0.15		
15-Apr-17	71	60	82	77	71	83	0.00	0.15		
16-Apr-17	71	59	83	78	71	86	0.00	0.15		
17-Apr-17	72	59	84	79	73	88	0.00	0.14		
18-Apr-17	73	60	86	80	74	89	0.00	0.16		
19-Apr-17	75	63	87	82	75	91	0.00	0.17		
20-Apr-17	74	61	87	82	75	90	0.00	0.15		
21-Apr-17	73	60	86	82	75	91	0.00	0.15		
22-Apr-17	72	61	85	82	76	89	0.00	0.15		
23-Apr-17	68	58	79	78	74	82	0.04	0.1		
24-Apr-17	60	54	68	73	70	76	0.00	0.09		
25-Apr-17	67	53	80	76	68	86	0.00	0.15		
26-Apr-17	71	55	82	79	71	88	0.00	0.16		
27-Apr-17	76	70	82	79	77	81	0.00	0.09		
28-Apr-17	79	69	90	82	76	89	0.00	0.16		
29-Apr-17	77	67	87	82	78	88	0.00	0.15		
30-Apr-17	77	68	88	83	77	89	0.00	0.16		
<b>High</b>			<b>90</b>			<b>91</b>				
<b>Low</b>		<b>42</b>			<b>60</b>					
<b>Average</b>	<b>70</b>	<b>58</b>	<b>82</b>	<b>77</b>	<b>70</b>	<b>84</b>				
Days over 95 <sup>0</sup>	0			<b>Total for Month</b>			<b>2.12</b>	4.12	12.8	11.2
				<b>Number of Rain Days</b>			4.00		27.0	
Days below 32 <sup>0</sup>	0			<b>Historic Average</b>			4.36		19.8	
				<b>Deviation from Average</b>			-2.24		-7.0	
				<b>Net Gain/loss (Rain - ET)</b>				<b>-2</b>		1.7

Year Cumulative

<b>Rain</b>	<b>ET</b>
12.8	11.2
27.0	
19.8	
-7.0	
	1.7

## May Daily Weather Data

Temperature							Precipitation	
Date	Air Temp 6 ft			Soil Temp 4 inch			Rain	Evapo Trans
	Avg	Min	Max	Avg	Min	Max	Inches	Inches
1-May-17	71	55	79	80	76	83	0.00	0.11
2-May-17	69	50	85	79	71	89	0.00	0.16
3-May-17	74	54	89	81	73	90	0.00	0.16
4-May-17	66	56	74	75	70	81	1.61	0.09
5-May-17	57	50	65	67	64	71	0.00	0.09
6-May-17	62	48	76	69	60	79	0.00	0.15
7-May-17	69	55	83	74	65	85	0.00	0.17
8-May-17	69	55	83	78	68	88	0.00	0.17
9-May-17	73	56	88	80	71	90	0.00	0.17
10-May-17	76	60	90	82	74	92	0.00	0.18
11-May-17	73	61	86	82	76	90	0.00	0.16
12-May-17	71	64	85	81	75	88	0.42	0.14
13-May-17	70	64	82	78	73	85	0.42	0.14
14-May-17	75	65	86	80	72	90	0.08	0.18
15-May-17	76	63	89	83	74	92	0.00	0.18
16-May-17	79	64	93	84	76	94	0.03	0.2
17-May-17	79	67	91	84	78	92	0.00	0.18
18-May-17	78	69	88	84	79	91	0.00	0.15
19-May-17	79	69	89	85	79	91	0.00	0.17
20-May-17	81	73	91	85	81	90	0.00	0.14
21-May-17	74	66	81	80	76	83	1.11	0.11
22-May-17	77	69	86	81	76	87	0.00	0.15
23-May-17	76	72	82	79	76	81	0.43	0.11
24-May-17	73	62	82	77	72	81	0.14	0.13
25-May-17	68	57	78	75	68	83	0.00	0.18
26-May-17	73	56	88	79	69	90	0.00	0.18
27-May-17	76	61	88	82	73	92	0.00	0.19
28-May-17	80	73	92	85	79	94	0.00	0.17
29-May-17	80	73	90	85	80	92	0.00	0.17
30-May-17	80	74	88	85	81	92	0.00	0.15
31-May-17	77	72	87	85	81	90	0.04	0.12
<b>High</b>			<b>93</b>			<b>94</b>		
<b>Low</b>		<b>48</b>			<b>60</b>			
<b>Average</b>	<b>74</b>	<b>62</b>	<b>85</b>	<b>80</b>	<b>74</b>	<b>88</b>		
Days over 95 <sup>o</sup>				0				
Days of 100 <sup>o</sup>				0				
Days below 32 <sup>o</sup>				0				
<b>Total for Month</b>							<b>4.28</b>	4.75
<b>Number of Rain Days</b>							9.00	
<b>Historic Average</b>							3.50	
<b>Deviation from Average</b>							0.78	
<b>Net Gain/loss (Rain - ET)</b>								<b>-0.47</b>

<b>Year Cumulative</b>	
<b>Rain</b>	<b>ET</b>
17.1	15.9
36.0	
23.3	
-6.2	
	1.2

## June Daily Weather Data

Temperature							Precipitation	
Date	Air Temp 6 ft			Soil Temp 4 inch			Rain	Evapo Trans
	Avg	Min	Max	Avg	Min	Max	Inches	Inches
1-Jun-17	78	72	84	83	79	86	0.01	0.11
2-Jun-17	77	71	88	83	79	91	2.03	0.14
3-Jun-17	77	70	86	83	77	90	0.01	0.18
4-Jun-17	77	72	86	83	78	89	0.01	0.13
5-Jun-17	77	72	86	82	78	86	0.23	0.13
6-Jun-17	74	71	79	79	77	82	0.86	0.07
7-Jun-17	73	67	82	79	76	85	0.36	0.12
8-Jun-17	73	66	84	81	73	90	0.00	0.18
9-Jun-17	76	63	87	83	74	93	0.00	0.19
10-Jun-17	79	66	90	85	76	95	0.00	0.19
11-Jun-17	76	71	82	82	80	85	1.62	0.1
12-Jun-17	77	72	82	82	78	87	0.00	0.12
13-Jun-17	73	71	83	79	78	84	0.50	0.08
14-Jun-17	76	71	86	82	76	89	0.00	0.15
15-Jun-17	76	69	84	81	78	86	0.03	0.13
16-Jun-17	78	69	88	83	76	92	0.00	0.18
17-Jun-17	78	72	86	84	79	89	0.00	0.13
18-Jun-17	78	69	91	85	78	96	0.62	0.18
19-Jun-17	77	71	86	83	79	88	0.08	0.11
20-Jun-17	73	72	74	79	77	81	1.56	0.05
21-Jun-17	77	73	81	78	77	81	0.48	0.06
22-Jun-17	82	75	90	82	77	88	0.00	0.17
23-Jun-17	82	75	91	85	78	93	0.00	0.21
24-Jun-17	82	73	91	86	79	95	0.00	0.19
25-Jun-17	77	72	87	83	79	90	2.07	0.1
26-Jun-17	77	67	88	83	76	91	0.01	0.19
27-Jun-17	78	72	87	84	79	89	0.00	0.14
28-Jun-17	76	70	86	83	79	90	0.88	0.13
29-Jun-17	77	73	82	81	78	86	0.10	0.1
30-Jun-17	79	73	88	83	79	89	0.07	0.15
<b>High</b>			<b>91</b>			<b>96</b>		
<b>Low</b>		<b>63</b>			<b>73</b>			
<b>Average</b>	<b>77</b>	<b>71</b>	<b>86</b>	<b>82</b>	<b>78</b>	<b>89</b>		
Days over 95 <sup>o</sup>				0				
Days of 100 <sup>o</sup>				0				
Days below 32 <sup>o</sup>				0				
<b>Total for Month</b>							<b>11.53</b>	4.11
<b>Number of Rain Days</b>							19.00	
<b>Historic Average</b>							4.82	
<b>Deviation from Average</b>							6.71	
<b>Net Gain/loss (Rain - ET)</b>								<b>7.42</b>

<b>Year Cumulative</b>	
<b>Rain</b>	<b>ET</b>
28.6	20.0
55.0	
28.1	
0.5	
	8.6



## July Daily Weather Data

Date	Temperature						Precipitation			
	Air Temp 6 ft			Soil Temp 4 inch			Rain	Evapo Trans		
	Avg	Min	Max	Avg	Min	Max	Inches	Inches		
1-Jul-17	81	72	92	86	78	95	0.00	0.20		
2-Jul-17	82	75	90	88	81	97	0.00	0.21		
3-Jul-17	83	75	92	90	83	99	0.00	0.20		
4-Jul-17	84	74	94	91	83	100	0.00	0.20		
5-Jul-17	83	73	94	92	84	101	0.00	0.21		
6-Jul-17	82	73	94	92	85	101	0.00	0.19		
7-Jul-17	82	74	93	91	85	100	0.00	0.18		
8-Jul-17	78	72	88	87	81	92	0.83	N/A		
9-Jul-17	79	71	91	87	79	97	0.00	N/A		
10-Jul-17	79	73	89	86	82	93	0.17	0.14		
11-Jul-17	79	74	88	85	80	91	0.00	0.14		
12-Jul-17	80	72	89	86	80	93	0.41	0.16		
13-Jul-17	80	72	93	87	81	96	1.94	N/A		
14-Jul-17	77	72	88	84	80	90	0.07	0.12		
15-Jul-17	80	73	93	86	81	94	0.00	0.17		
16-Jul-17	76	70	82	83	80	84	1.67	0.09		
17-Jul-17	76	71	83	82	79	85	0.79	0.11		
18-Jul-17	78	73	86	83	79	88	0.08	0.13		
19-Jul-17	81	70	92	87	79	96	0.00	0.21		
20-Jul-17	83	75	94	89	82	98	0.03	0.20		
21-Jul-17	79	71	94	88	83	99	0.19	0.17		
22-Jul-17	81	71	92	88	80	98	0.00	0.20		
23-Jul-17	79	75	85	86	83	91	0.00	0.13		
24-Jul-17	80	74	89	87	82	95	0.00	0.16		
25-Jul-17	78	73	88	86	83	94	0.52	0.14		
26-Jul-17	80	73	92	87	81	97	0.00	0.18		
27-Jul-17	82	73	92	90	81	100	0.00	0.20		
28-Jul-17	83	74	93	91	84	99	0.00	0.19		
29-Jul-17	79	77	83	87	84	89	0.12	0.09		
30-Jul-17	79	72	88	86	81	94	0.00	0.14		
31-Jul-17	77	67	88	88	79	99	0.00	0.19		
<b>High</b>			<b>94</b>			<b>101</b>				
<b>Low</b>		<b>67</b>			<b>78</b>					
<b>Average</b>	<b>80</b>	73	90	<b>87</b>	81	95				
				<b>Total for Month</b>			<b>6.82</b>	4.65	35.4	24.7
Days over 95 <sup>o</sup>				0			<b>Number of Rain Days</b>		12.00	67.0
Days of 100 <sup>o</sup>				0			<b>Historic Average</b>		6.14	34.2
Days below 32 <sup>o</sup>				0			<b>Deviation from Average</b>		0.68	1.2
				<b>Net Gain/loss (Rain - ET)</b>				<b>2.17</b>		10.8

Year Cumulative

<b>Rain</b>	<b>ET</b>
35.4	24.7
67.0	
34.2	
1.2	
	10.8

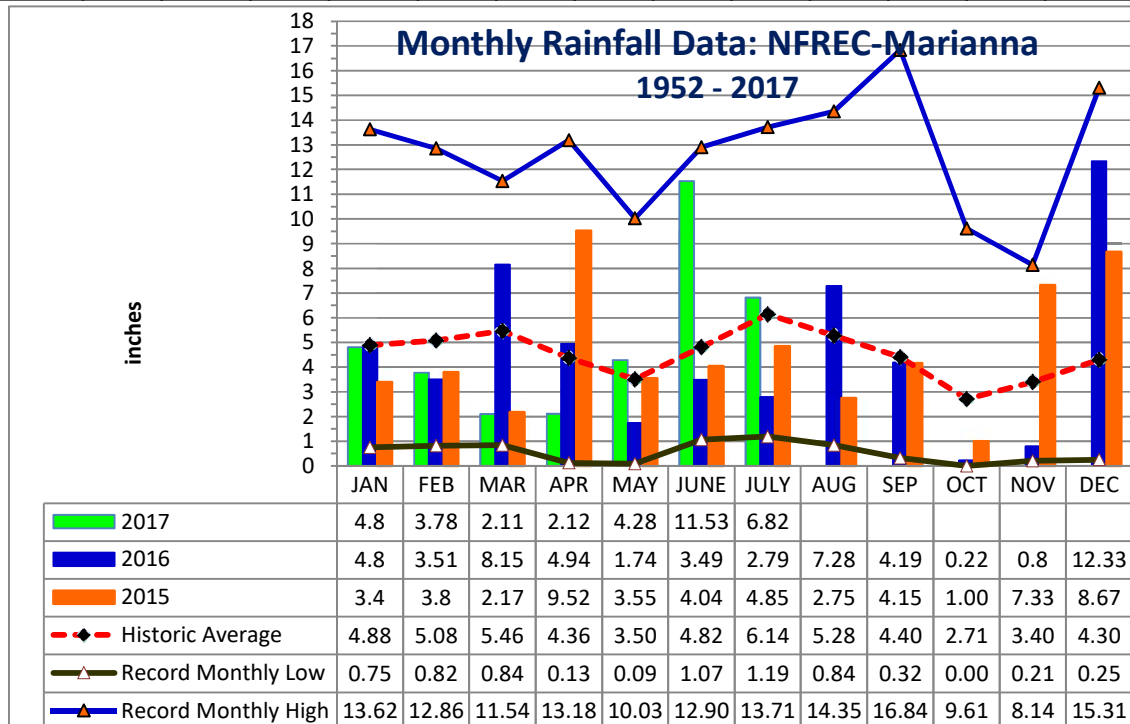




YEAR	JAN	FEB	MAR	APR	MAY	JUNE	JULY	AUG	SEP	OCT	NOV	DEC	TOTAL
1952	1.14	8.88	4.48	2.11	5.13	1.12	5.95	8.81	3.09	0.65	3.26	3.42	48.04
1953	4.84	7.26	3.03	8.43	2.43	3.97	6.84	1.63	6.33	0.65	4.09	15.31	64.81
1954	1.33	3.49	2.62	2.58	1.96	3.46	3.28	2.84	1.72	1.30	2.66	1.44	28.68
1955	3.66	1.83	0.84	5.80	3.03	1.62	6.75	3.75	2.44	2.10	0.72	0.77	33.31
1956	3.59	5.18	3.77	2.04	4.03	5.45	8.52	4.09	6.44	5.08	0.28	3.34	51.81
1957	0.75	2.65	5.17	5.74	4.60	5.75	9.83	5.91	16.84	1.31	6.24	2.22	67.01
1958	4.48	3.61	4.73	7.22	5.57	6.00	8.39	3.45	3.68	1.88	1.75	2.32	53.08
1959	3.67	7.06	8.50	5.73	6.95	3.77	4.83	3.67	3.07	7.93	0.21	1.53	56.92
1960	3.36	7.08	3.41	6.80	3.20	4.75	4.97	4.80	6.22	2.00	0.47	2.35	49.41
1961	4.23	4.15	3.64	5.57	3.97	4.41	3.99	11.09	2.60	0.00	2.84	6.23	52.72
1962	1.72	2.80	8.13	3.28	2.86	3.67	7.97	6.07	3.07	2.82	5.16	1.67	49.22
1963	7.31	3.02	3.18	1.36	3.50	7.99	5.16	1.50	5.25	0.01	4.22	6.05	48.55
1964	10.80	6.81	6.41	9.47	2.23	5.68	9.22	3.07	7.47	9.61	3.35	6.44	80.56
1965	2.63	6.09	5.51	3.96	0.18	9.60	3.26	4.18	4.48	3.41	1.81	3.60	48.71
1966	5.56	9.84	2.57	0.77	5.80	3.13	3.25	9.82	5.09	1.41	2.03	4.62	53.89
1967	8.27	3.32	2.19	0.13	2.61	7.02	6.49	3.58	1.40	1.86	2.40	7.98	47.25
1968	1.28	2.30	3.40	2.50	3.39	1.18	5.45	4.61	2.99	1.41	5.11	5.34	38.96
1969	1.68	3.49	7.08	4.54	3.01	1.71	13.18	3.05	5.64	1.50	1.22	3.80	49.90
1970	4.16	9.20	8.86	1.83	1.81	3.69	5.04	8.01	0.49	4.40	2.21	3.13	52.83
1971	1.97	6.11	7.15	3.17	3.03	3.85	5.20	6.76	2.47	1.84	1.94	3.70	47.19
1972	3.62	6.03	6.41	0.38	2.87	8.89	3.78	5.39	2.14	2.44	3.29	3.77	49.01
1973	8.14	7.71	8.38	7.60	6.87	3.63	11.12	4.51	5.40	0.27	3.64	5.33	72.60
1974	5.24	5.80	2.66	3.40	3.78	1.56	3.29	8.01	4.68	0.84	2.14	2.89	44.29
1975	10.21	6.36	4.91	10.35	3.97	4.10	13.71	5.40	3.81	4.35	2.89	3.28	73.34
1976	6.99	1.50	4.89	1.87	8.89	3.08	3.03	3.47	5.47	6.18	5.72	3.97	55.06
1977	3.47	1.81	6.52	0.88	0.60	6.36	3.55	5.22	9.83	2.59	8.14	4.19	53.16
1978	7.28	3.28	7.25	4.65	6.73	3.79	7.25	4.90	0.98	0.20	6.01	3.65	55.97
1979	7.30	7.78	3.26	7.75	6.22	1.31	7.49	6.30	11.51	0.53	4.47	2.84	66.76
1980	6.58	2.96	11.54	9.29	4.50	3.50	5.87	2.53	4.56	4.71	1.52	0.25	57.81
1981	1.70	5.32	5.94	3.03	2.73	4.74	4.02	2.53	2.44	1.75	0.85	4.94	39.99
1982	4.17	5.61	2.91	5.93	5.39	3.00	7.51	4.42	6.00	2.65	2.34	9.14	59.07
1983	4.92	6.84	8.53	7.88	2.27	5.66	1.19	2.53	8.97	3.52	5.90	7.65	65.86
1984	5.49	5.01	8.62	6.29	2.50	5.31	12.01	5.76	0.32	1.60	1.63	0.80	55.34
1985	4.60	4.46	2.60	1.18	4.44	5.68	3.68	5.58	1.42	7.42	7.91	5.34	54.31
1986	5.68	10.27	3.21	0.83	2.26	1.85	2.75	4.12	2.35	2.22	4.40	5.68	45.62
1987	8.62	5.52	7.23	0.40	4.46	5.43	5.51	4.18	2.27	0.06	4.02	0.81	48.51
1988	5.57	6.40	8.41	2.69	0.28	1.07	5.43	3.98	5.53	1.98	3.28	1.23	45.85
1989	1.59	2.74	4.96	3.63	7.01	12.90	11.19	3.06	3.36	7.20	4.71	5.45	67.80
1990	5.26	4.57	4.55	3.00	3.22	4.02	3.65	2.91	0.85	1.34	0.93	3.42	37.72
1991	13.62	3.44	9.00	5.32	10.03	5.30	10.67	3.89	1.53	1.17	1.60	3.00	68.57
1992	8.37	6.29	7.92	2.50	1.41	11.16	8.69	6.72	3.19	2.08	7.40	2.93	68.66
1993	12.00	3.38	7.41	1.50	1.60	4.18	6.68	3.89	3.44	2.90	2.27	3.63	52.88
1994	8.64	2.53	6.25	4.34	1.82	11.41	10.95	9.08	6.44	7.62	2.53	3.79	75.40
1995	5.23	3.13	4.29	4.35	3.90	5.56	3.02	6.16	0.86	7.51	4.12	1.78	49.91
1996	3.64	5.99	8.47	5.76	1.50	5.43	2.83	14.28	5.32	3.81	2.01	3.65	62.69

YEAR	JAN	FEB	MAR	APR	MAY	JUNE	JULY	AUG	SEP	OCT	NOV	DEC	TOTAL
1997	6.68	5.29	2.63	10.08	5.91	6.41	5.73	4.65	3.78	2.10	6.85	8.44	68.55
1998	6.28	8.30	6.11	2.24	1.45	2.35	4.37	2.20	16.31	0.30	2.05	1.98	53.94
1999	6.95	2.90	3.61	1.50	6.71	8.99	8.64	4.02	4.33	3.13	3.56	2.50	56.84
2000	3.78	4.96	4.48	4.05	0.09	4.00	3.40	7.15	7.20	0.71	4.43	3.21	47.46
2001	2.16	0.82	10.00	1.99	2.52	8.24	4.66	8.21	1.90	1.51	1.70	0.78	44.49
2002	3.82	2.44	5.51	5.78	2.19	3.45	10.34	3.30	11.83	7.36	7.76	5.99	69.77
2003	2.30	7.03	8.18	4.89	3.11	6.11	7.84	5.99	2.39	3.58	3.04	3.12	57.58
2004	3.19	7.66	0.90	4.37	1.19	6.66	4.92	1.67	10.01	3.89	4.97	3.25	52.68
2005	3.33	2.31	9.05	7.04	1.67	7.47	9.44	11.71	1.62	0.03	3.15	4.81	61.63
2006	4.82	3.90	0.91	1.61	4.97	1.99	2.22	5.18	0.91	3.09	3.41	5.43	38.44
2007	5.99	2.45	1.10	0.99	1.57	3.97	3.94	4.18	1.27	4.79	1.89	4.03	36.17
2008	4.26	9.00	9.11	4.28	1.46	8.64	4.02	9.29	0.74	5.11	3.18	8.23	67.32
2009	2.33	3.26	7.11	7.73	9.17	2.78	3.88	3.19	5.22	3.39	2.35	9.57	59.98
2010	7.53	3.99	3.41	4.01	5.09	2.92	2.31	0.84	1.33	0.22	5.82	0.63	38.10
2011	4.33	4.04	5.00	0.92	0.78	1.66	5.11	1.87	2.26	1.84	1.94	3.75	33.50
2012	3.79	7.49	5.94	3.17	1.42	7.35	5.05	14.35	5.17	1.75	1.30	4.10	60.88
2013	1.05	12.86	2.99	3.54	0.64	3.72	13.39	13.17	2.14	1.96	3.91	4.44	63.81
2014	2.15	4.99	7.70	13.18	4.03	2.32	5.69	2.55	6.03	2.03	5.93	5.32	61.92
2015	3.4	3.8	2.17	9.52	3.55	4.04	4.85	2.75	4.15	1.00	7.33	8.67	55.23
2016	4.8	3.51	8.15	4.94	1.74	3.49	2.79	7.28	4.19	0.22	0.8	12.33	54.24
2017	4.8	3.78	2.11	2.12	4.28	11.5	6.82						35.44

Deviation from the Average Monthly Rainfall													
Inches	-0.08	-1.30	-3.35	-2.24	0.78	6.71	0.68	-5.28	-4.40	-2.71	-3.40	-4.30	-18.89
Monthly Average Rainfall, 1952-2016													
AVG.	4.88	5.08	5.46	4.36	3.50	4.82	6.14	5.28	4.40	2.71	3.40	4.30	54.33
% of Annual Rainfall Occuring each Month													
	9.0%	9.4%	10.1%	8.1%	6.5%	8.9%	11.4%	9.8%	8.1%	5.0%	6.3%	7.9%	
Record High/Low for the Month													
LOW	0.75	0.82	0.84	0.13	0.09	1.07	1.19	0.84	0.32	0.00	0.21	0.25	28.68
HIGH	13.62	12.86	11.54	13.18	10.03	12.90	13.71	14.35	16.84	9.61	8.14	15.31	80.56



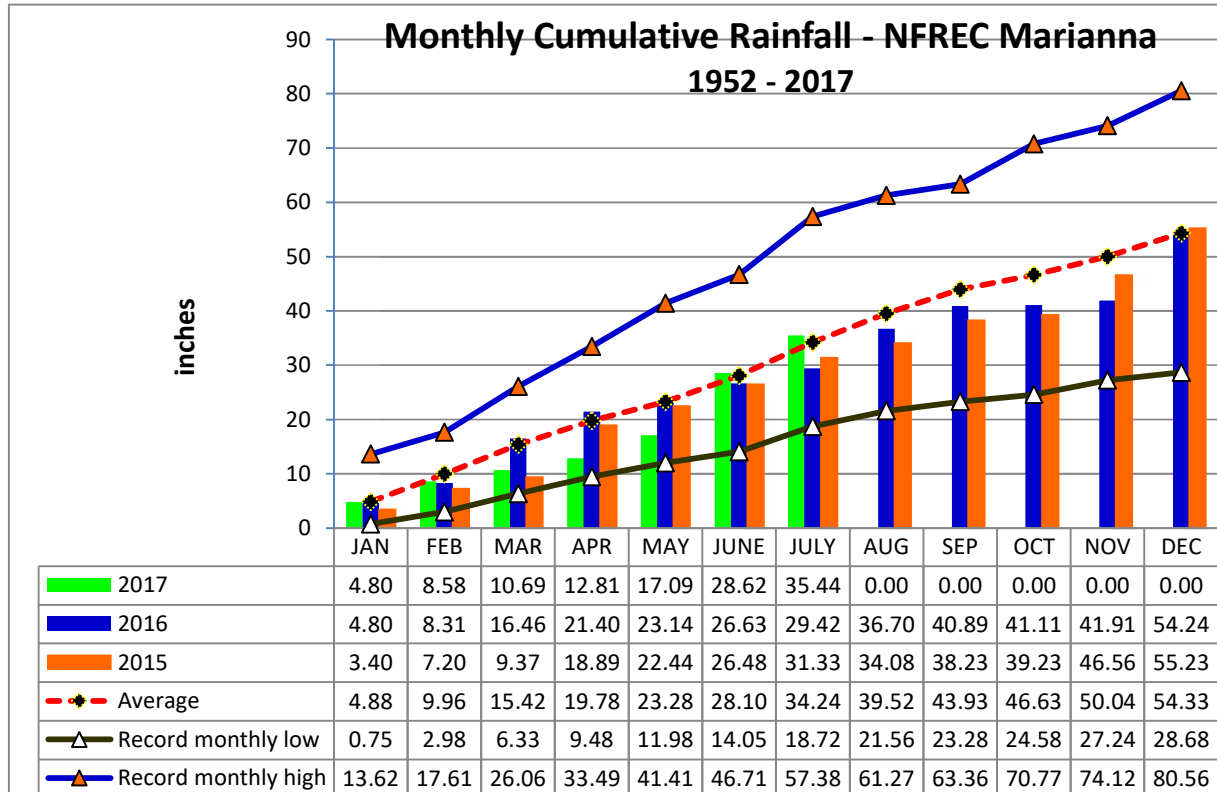
**Jackson County**  
**Monthly Cumulative Rainfall, 1952 -2017**  
North Florida Research & Education Center Marianna, FL



YEAR	JAN	FEB	MAR	APR	MAY	JUNE	JULY	AUG	SEP	OCT	NOV	DEC
1952	1.14	10.02	14.50	16.61	21.74	22.86	28.81	37.62	40.71	41.36	44.62	48.04
1953	4.84	12.10	15.13	23.56	25.99	29.96	36.80	38.43	44.76	45.41	49.50	64.81
1954	1.33	4.82	7.44	10.02	<b>11.98</b>	15.44	<b>18.72</b>	<b>21.56</b>	<b>23.28</b>	<b>24.58</b>	<b>27.24</b>	<b>28.68</b>
1955	3.66	5.49	<b>6.33</b>	12.13	15.16	16.78	23.53	27.28	29.72	31.82	32.54	33.31
1956	3.59	8.77	12.54	14.58	18.61	24.06	32.58	36.67	43.11	48.19	48.47	51.81
1957	<b>0.75</b>	3.40	8.57	14.31	18.91	24.66	34.49	40.40	57.24	58.55	64.79	67.01
1958	4.48	8.09	12.82	20.04	25.61	31.61	40.00	43.45	47.13	49.01	50.76	53.08
1959	3.67	10.73	19.23	24.96	31.91	35.68	40.51	44.18	47.25	55.18	55.39	56.92
1960	3.36	10.44	13.85	20.65	23.85	28.60	33.57	38.37	44.59	46.59	47.06	49.41
1961	4.23	8.38	12.02	17.59	21.56	25.97	29.96	41.05	43.65	43.65	46.49	52.72
1962	1.72	4.52	12.65	15.93	18.79	22.46	30.43	36.50	39.57	42.39	47.55	49.22
1963	7.31	10.33	13.51	14.87	18.37	26.36	31.52	33.02	38.27	38.28	42.50	48.55
1964	10.80	<b>17.61</b>	24.02	<b>33.49</b>	35.72	41.40	50.62	53.69	61.16	<b>70.77</b>	<b>74.12</b>	<b>80.56</b>
1965	2.63	8.72	14.23	18.19	18.37	27.97	31.23	35.41	39.89	43.30	45.11	48.71
1966	5.56	15.40	17.97	18.74	24.54	27.67	30.92	40.74	45.83	47.24	49.27	53.89
1967	8.27	11.59	13.78	13.91	16.52	23.54	30.03	33.61	35.01	36.87	39.27	47.25
1968	1.28	3.58	6.98	<b>9.48</b>	12.87	<b>14.05</b>	19.50	24.11	27.10	28.51	33.62	38.96
1969	1.68	5.17	12.25	16.79	19.80	21.51	34.69	37.74	43.38	44.88	46.10	49.90
1970	4.16	13.36	22.22	24.05	25.86	29.55	34.59	42.60	43.09	47.49	49.70	52.83
1971	1.97	8.08	15.23	18.40	21.43	25.28	30.48	37.24	39.71	41.55	43.49	47.19
1972	3.62	9.65	16.06	16.44	19.31	28.20	31.98	37.37	39.51	41.95	45.24	49.01
1973	8.14	15.85	24.23	31.83	38.70	42.33	53.45	57.96	<b>63.36</b>	63.63	67.27	72.60
1974	5.24	11.04	13.70	17.10	20.88	22.44	25.73	33.74	38.42	39.26	41.40	44.29
1975	10.21	16.57	21.48	31.83	35.80	39.90	53.61	59.01	62.82	67.17	70.06	73.34
1976	6.99	8.49	13.38	15.25	24.14	27.22	30.25	33.72	39.19	45.37	51.09	55.06
1977	3.47	5.28	11.80	12.68	13.28	19.64	23.19	28.41	38.24	40.83	48.97	53.16
1978	7.28	10.56	17.81	22.46	29.19	32.98	40.23	45.13	46.11	46.31	52.32	55.97
1979	7.30	15.08	18.34	26.09	32.31	33.62	41.11	47.41	58.92	59.45	63.92	66.76
1980	6.58	9.54	21.08	30.37	34.87	38.37	44.24	46.77	51.33	56.04	57.56	57.81
1981	1.70	7.02	12.96	15.99	18.72	23.46	27.48	30.01	32.45	34.20	35.05	39.99
1982	4.17	9.78	12.69	18.62	24.01	27.01	34.52	38.94	44.94	47.59	49.93	59.07
1983	4.92	11.76	20.29	28.17	30.44	36.10	37.29	39.82	48.79	52.31	58.21	65.86
1984	5.49	10.50	19.12	25.41	27.91	33.22	45.23	50.99	51.31	52.91	54.54	55.34
1985	4.60	9.06	11.66	12.84	17.28	22.96	26.64	32.22	33.64	41.06	48.97	54.31
1986	5.68	15.95	19.16	19.99	22.25	24.10	26.85	30.97	33.32	35.54	39.94	45.62
1987	8.62	14.14	21.37	21.77	26.23	31.66	37.17	41.35	43.62	43.68	47.70	48.51
1988	5.57	11.97	20.38	23.07	23.35	24.42	29.85	33.83	39.36	41.34	44.62	45.85
1989	1.59	4.33	9.29	12.92	19.93	32.83	44.02	47.08	50.44	57.64	62.35	67.80
1990	5.26	9.83	14.38	17.38	20.60	24.62	28.27	31.18	32.03	33.37	34.30	37.72
1991	<b>13.62</b>	17.06	<b>26.06</b>	31.38	<b>41.41</b>	<b>46.71</b>	<b>57.38</b>	<b>61.27</b>	62.80	63.97	65.57	68.57
1992	8.37	14.66	22.58	25.08	26.49	37.65	46.34	53.06	56.25	58.33	65.73	68.66
1993	12.00	15.38	22.79	24.29	25.89	30.07	36.75	40.64	44.08	46.98	49.25	52.88
1994	8.64	11.17	17.42	21.76	23.58	34.99	45.94	55.02	61.46	69.08	71.61	75.40
1995	5.23	8.36	12.65	17.00	20.90	26.46	29.48	35.64	36.50	44.01	48.13	49.91
1996	3.64	9.63	18.10	23.86	25.36	30.79	33.62	47.90	53.22	57.03	59.04	62.69

YEAR	JAN	FEB	MAR	APR	MAY	JUNE	JULY	AUG	SEP	OCT	NOV	DEC
1997	6.68	11.97	14.60	24.68	30.59	37.00	42.73	47.38	51.16	53.26	60.11	68.55
1998	6.28	14.58	20.69	22.93	24.38	26.73	31.10	33.30	49.61	49.91	51.96	53.94
1999	6.95	9.85	13.46	14.96	21.67	30.66	39.30	43.32	47.65	50.78	54.34	56.84
2000	3.78	8.74	13.22	17.27	17.36	21.36	24.76	31.91	39.11	39.82	44.25	47.46
2001	2.16	2.98	12.98	14.97	17.49	25.73	30.39	38.60	40.50	42.01	43.71	44.49
2002	3.82	6.26	11.77	17.55	19.74	23.19	33.53	36.83	48.66	56.02	63.78	69.77
2003	2.30	9.33	17.51	22.40	25.51	31.62	39.46	45.45	47.84	51.42	54.46	57.58
2004	3.19	10.85	11.75	16.12	17.31	23.97	28.89	30.56	40.57	44.46	49.43	52.68
2005	3.33	5.64	14.69	21.73	23.40	30.87	40.31	52.02	53.64	53.67	56.82	61.63
2006	4.82	8.72	9.63	11.24	16.21	18.20	20.42	25.60	26.51	29.60	33.01	38.44
2007	5.99	8.44	9.54	10.53	12.10	16.07	20.01	24.19	25.46	30.25	32.14	36.17
2008	4.26	13.26	22.37	26.65	28.11	36.75	40.77	50.06	50.80	55.91	59.09	67.32
2009	2.33	5.59	12.70	20.43	29.60	32.38	36.26	39.45	44.67	48.06	50.41	59.98
2010	7.53	11.52	14.93	18.94	24.03	26.95	29.26	30.10	31.43	31.65	37.47	38.10
2011	4.33	8.37	13.37	14.29	15.07	16.73	21.84	23.71	25.97	27.81	29.75	33.50
2012	3.79	11.28	17.22	20.39	21.81	29.16	34.21	48.56	53.73	55.48	56.78	60.88
2013	1.05	13.91	16.90	20.44	21.08	24.80	38.19	51.36	53.50	55.46	59.37	63.81
2014	2.15	7.14	14.84	28.02	32.05	34.37	40.06	42.61	48.64	50.67	56.60	61.92
2015	3.40	7.20	9.37	18.89	22.44	26.48	31.33	34.08	38.23	39.23	46.56	55.23
2016	4.80	8.31	16.46	21.40	23.14	26.63	29.42	36.70	40.89	41.11	41.91	54.24
2017	4.80	8.58	10.69	12.81	17.09	28.62	35.44					

Deviation from the Average Accumulation												
Inches	-0.08	-1.38	-4.73	-6.97	-6.19	0.52	1.20	#VALUE!	#VALUE!	#VALUE!	#VALUE!	#VALUE!
Average Accumulation, 1952-2016												
Inches	4.88	9.96	15.42	19.78	23.28	28.10	34.24	39.52	43.93	46.63	50.04	54.33
Record High/Low Accumulation												
<b>LOW</b>	0.75	2.98	6.33	9.48	11.98	14.05	18.72	21.56	23.28	24.58	27.24	28.68
<b>HIGH</b>	13.62	17.61	26.06	33.49	41.41	46.71	57.38	61.27	63.36	70.77	74.12	80.56



2017 UF/IFAS FAWN Panhandle Weather Station Summary									
FAWN Station	Data	Jan	Feb	Mar	Apr	May	June	July	Total
Monticello	Rain	4.5	1.6	1.2	2.5	5.8	7.4	4.0	26.9
	Hist Avg	4.5	4.6	6.1	4.1	3.4	5.7	7.0	35.4
	Deviation	0.0	-3.1	-5.0	-1.6	2.4	1.7	-3.1	-8.5
Quincy	Rain	5.9	2.9	1.2	3.4	6.0	9.7	4.1	33.2
	Hist Avg	5.0	4.3	5.6	3.7	4.2	5.2	6.3	34.3
	Deviation	0.9	-1.4	-4.4	-0.3	1.8	4.5	-2.2	-1.1
Carrabelle	Rain	4.2	3.9	1.7	0.6	2.6	16.8	5.8	35.5
	Hist Avg	3.8	3.7	4.9	3.0	2.7	5.3	7.3	30.7
	Deviation	0.4	0.2	-3.2	-2.5	-0.2	11.5	-1.5	4.8
Marianna	Rain	4.8	3.8	2.1	2.1	4.3	11.5	6.8	35.4
	Hist Avg	4.9	5.1	5.5	4.4	3.5	4.8	6.1	34.2
	Deviation	-0.1	-1.3	-3.3	-2.2	0.8	6.7	0.7	1.2
DeFuniak	Rain	5.6	4.5	2.1	3.9	4.6	12.1	6.5	39.1
	Hist Avg	4.9	5.4	5.6	3.9	4.5	7.1	7.2	38.7
	Deviation	0.7	-0.9	-3.6	0.0	0.0	5.0	-0.7	0.4
Jay	Rain	3.9	3.2	2.6	3.1	7.3	20.3	2.5	42.9
	Hist Avg	5.5	5.3	6.6	4.8	4.8	5.8	7.0	39.8
	Deviation	-1.6	-2.1	-4.0	-1.8	2.5	14.5	-4.5	3.1
6 Station Average		4.8	3.3	1.8	2.6	5.1	13.0	4.9	35.5

Hist Av 35.5  
Deviation 0.0

