



## Jackson County 2021 Weather Data

*70 Years of Weather Data Recorded at the UF/IFAS Marianna North Florida Research and Education Center*



**Doug Mayo**  
Jackson County Extension Director

1952-2008 Rainfall Data compiled by  
Ed Jowers, Emeritus County Extension Director

Data provided by Florida Automated Weather Station (FAWN)  
UF/IFAS North Florida Research and Education Center  
Greenwood, Florida



<http://fawn.ifas.ufl.edu/>

Tower Name	Tower Number	Latitude Degree, Minutes	Latitude Degrees, Minutes, Seconds	Latitude Degrees Decimal	Longitude Degree, Minutes	Longitude Degrees, Minutes, Seconds	Longitude Degrees Decimal	Elevation Feet
Marianna	130.00	N 30°51.000'	N 30°50'00.00"	N 30.85000°	-85°09.910'	-85°09'54.60"	-85.16516°	115'



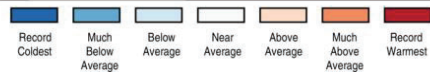
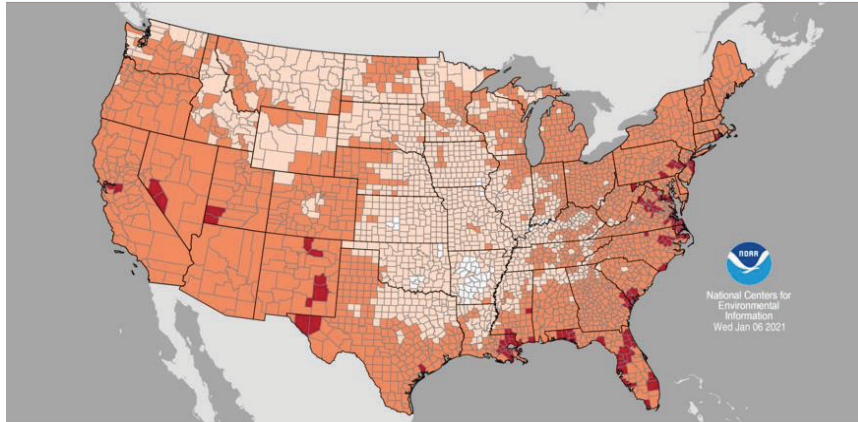
## Annual Average Jackson Co. 6ft Air Temperature by Year

	2020	2019	2018	2017	2016	2015	2014	2013	2012	2011
Marianna FAWN	69	70	67	68	68	68	65	67	71	68
NOAA Avg	67	67	67	67	67	67	67	67	67	67
Deviation	2	3	0	1	1	1	-2	0	4	1
NOAA	69.3	69.6	68.6	69.2	68.7	69.1	66	67	68.6	67.5

### County Average Temperature Ranks

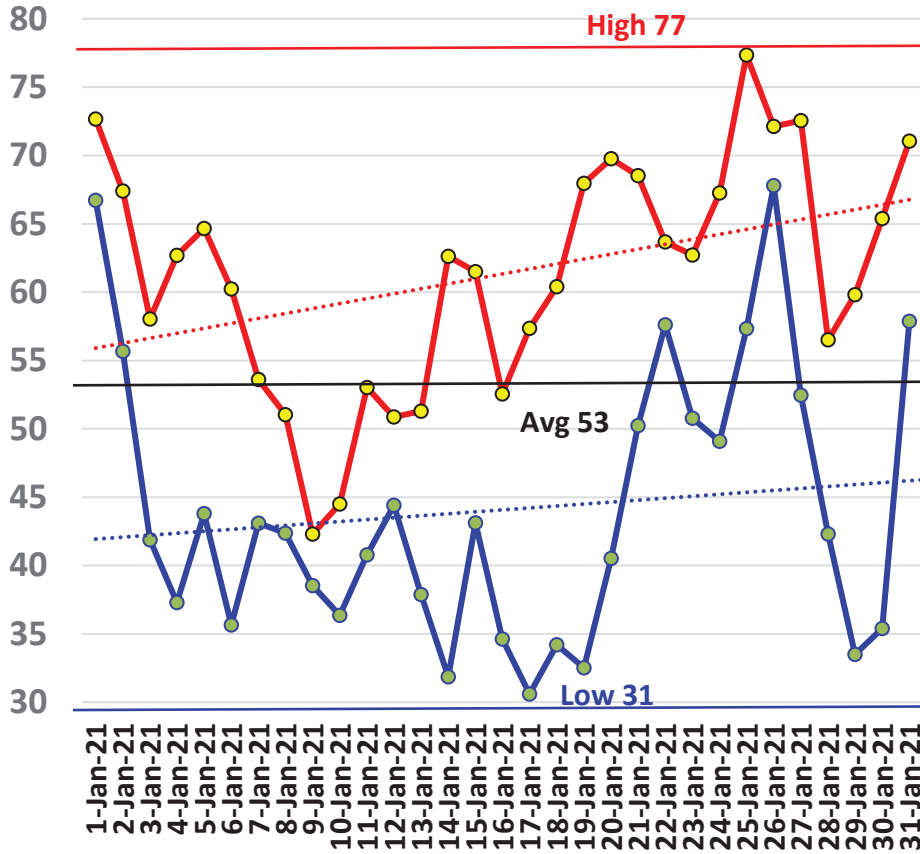
January–December 2020

Period: 1895–2020

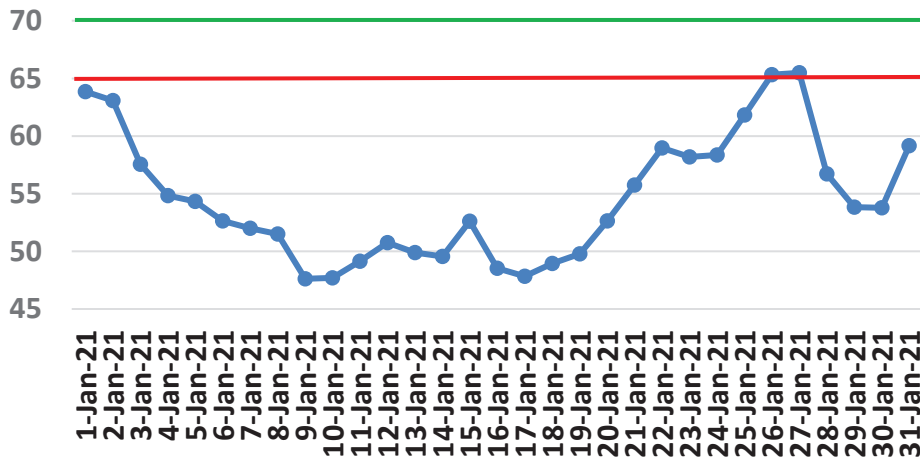




## Jan Marianna FAWN 6' Air Temps



## January Avg Soil Temps Marianna

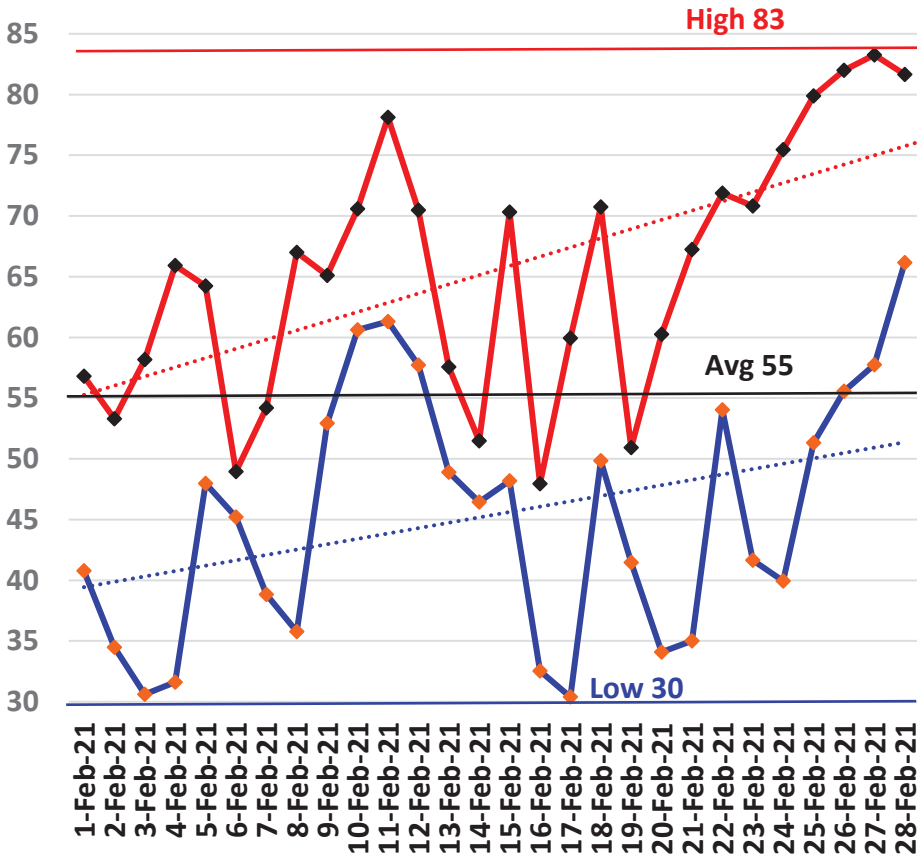


## February Daily Weather Data

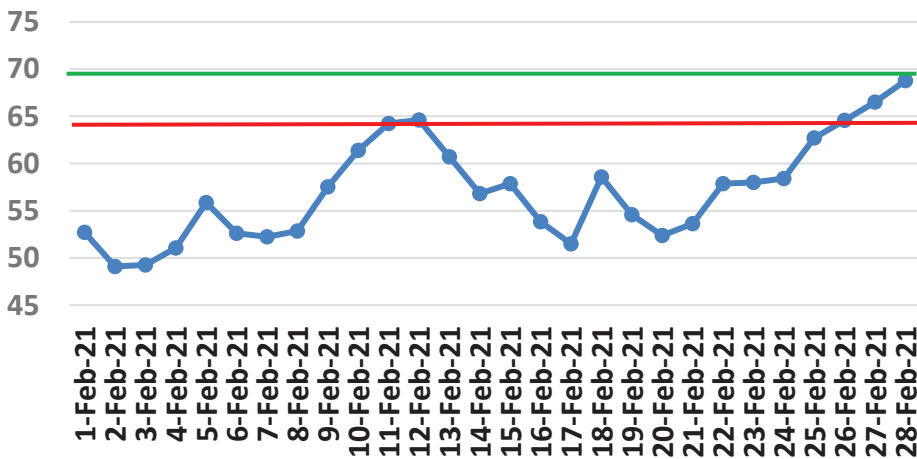
Date	Temperature						Precipitation		
	Air Temp 6 ft			Soil Temp 4 inch			Rain	Evapo Trans	
	Avg	Min	Max	Avg	Min	Max	Inches	Inches	
1-Feb-21	45	41	57	53	49	59	0.00	0.05	
2-Feb-21	43	34	53	49	45	53	0.00	0.06	
3-Feb-21	43	31	58	49	45	55	0.00	0.06	
4-Feb-21	51	32	66	51	45	56	0.03	0.07	
5-Feb-21	57	48	64	56	54	58	0.29	0.05	
6-Feb-21	47	45	49	53	52	54	0.30	0.04	
7-Feb-21	47	39	54	52	50	55	0.01	0.05	
8-Feb-21	51	36	67	53	47	59	0.00	0.07	
9-Feb-21	60	53	65	58	55	60	1.49	0.05	
10-Feb-21	65	61	71	61	59	64	0.01	0.06	
11-Feb-21	68	61	78	64	62	68	0.44	0.08	
12-Feb-21	64	58	70	65	63	67	0.89	0.06	
13-Feb-21	53	49	58	61	58	63	0.46	0.05	
14-Feb-21	49	46	51	57	55	58	0.17	0.05	
15-Feb-21	56	48	70	58	55	61	0.76	0.07	
16-Feb-21	38	33	48	54	50	58	0.00	0.06	
17-Feb-21	46	30	60	51	46	56	0.00	0.07	
18-Feb-21	59	50	71	59	55	62	1.36	0.07	
19-Feb-21	47	41	51	55	51	57	0.05	0.06	
20-Feb-21	46	34	60	52	47	59	0.00	0.08	
21-Feb-21	52	35	67	54	48	60	0.00	0.08	
22-Feb-21	61	54	72	58	55	62	0.17	0.08	
23-Feb-21	56	42	71	58	52	64	0.00	0.09	
24-Feb-21	58	40	75	58	52	65	0.00	0.1	
25-Feb-21	65	51	80	63	57	70	0.00	0.1	
26-Feb-21	68	56	82	65	60	70	0.00	0.1	
27-Feb-21	70	58	83	67	63	72	0.00	0.11	
28-Feb-21	73	66	82	69	66	73	0.00	0.11	
<b>High</b>			<b>83</b>			<b>73</b>			
<b>Low</b>		<b>30</b>			<b>45</b>				
<b>Average</b>	<b>55</b>	45	66	<b>57</b>	53	61			
Days over 95 <sup>0</sup>	0			<b>Total for Month</b>		<b>6.43</b>	1.98	11.9	3.4
				<b>Number of Rain Days</b>		14		24.0	
Days below 32 <sup>0</sup>	3			<b>Historic Average</b>		5.12		10.0	
				<b>Deviation from Average</b>		1.31		1.8	
				<b>Net Gain/loss (Rain - ET)</b>				<b>4.45</b>	

<b>Year Cumulative</b>	
<b>Rain</b>	
<b>ET</b>	
11.9	3.4
24.0	
10.0	
1.8	
	8.5

## February Marianna FAWN 6' Air Temps



## February Avg Soil Temps Marianna



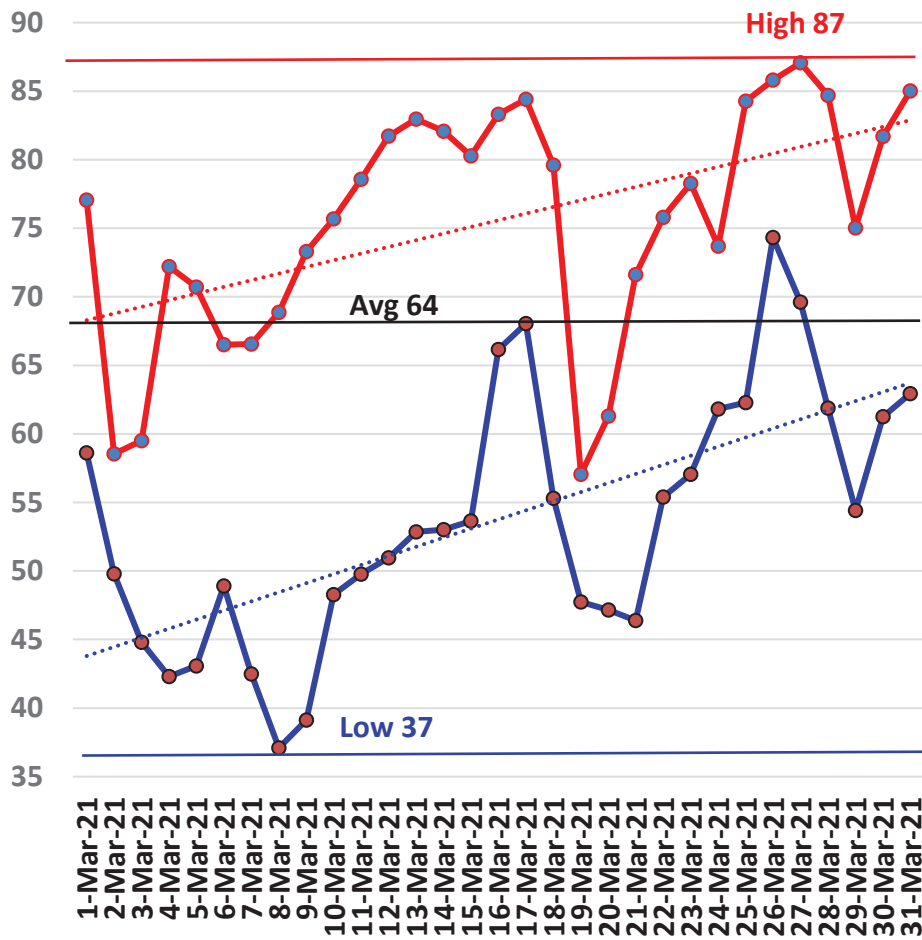
## March Daily Weather Data

Temperature							Precipitation		
Date	Air Temp 6 ft			Soil Temp 4 inch			Rain	Evapo Trans	
	Avg	Min	Max	Avg	Min	Max	Inches	Inches	
1-Mar-21	67	59	77	68	64	71	0.86	0.07	
2-Mar-21	54	50	59	61	57	64	1.41	0.05	
3-Mar-21	50	45	60	57	54	61	0.01	0.07	
4-Mar-21	57	42	72	59	52	67	0.00	0.1	
5-Mar-21	58	43	71	60	53	66	0.00	0.09	
6-Mar-21	57	49	67	61	57	66	0.01	0.08	
7-Mar-21	53	42	67	59	53	68	0.00	0.1	
8-Mar-21	53	37	69	60	52	70	0.00	0.09	
9-Mar-21	57	39	73	61	52	72	0.00	0.1	
10-Mar-21	62	48	76	64	57	73	0.00	0.11	
11-Mar-21	65	50	79	66	58	76	0.00	0.12	
12-Mar-21	67	51	82	68	60	77	0.00	0.12	
13-Mar-21	68	53	83	70	62	79	0.00	N/A	
14-Mar-21	68	53	82	70	63	79	0.00	0.13	
15-Mar-21	68	54	80	70	64	77	0.00	0.11	
16-Mar-21	73	66	83	72	68	79	0.00	0.13	
17-Mar-21	74	68	84	73	69	79	0.00	0.12	
18-Mar-21	70	55	80	72	66	78	0.31	0.14	
19-Mar-21	53	48	57	63	60	66	0.00	0.07	
20-Mar-21	55	47	61	61	59	65	0.00	0.07	
21-Mar-21	57	46	72	63	56	72	0.00	0.11	
22-Mar-21	65	55	76	67	60	75	0.00	0.11	
23-Mar-21	67	57	78	68	63	75	0.00	0.11	
24-Mar-21	67	62	74	68	66	71	0.20	0.08	
25-Mar-21	74	62	84	70	65	76	0.00	0.13	
26-Mar-21	78	74	86	75	71	81	0.00	0.13	
27-Mar-21	77	70	87	76	71	84	0.00	0.14	
28-Mar-21	72	62	85	75	70	83	0.13	0.13	
29-Mar-21	64	54	75	71	63	81	0.00	0.14	
30-Mar-21	71	61	82	74	67	81	0.00	0.13	
31-Mar-21	72	63	85	75	70	82	0.55	0.13	
<b>High</b>			<b>87</b>			<b>84</b>			
<b>Low</b>		<b>37</b>			<b>52</b>				
<b>Average</b>	<b>64</b>	54	76	<b>67</b>	61	74			
Days over 95 <sup>o</sup>				0		<b>Total for Month</b>		<b>3.48</b>	3.21
Days below 32 <sup>o</sup>				0		<b>Number of Rain Days</b>		8	
						<b>Historic Average</b>		5.33	
						<b>Deviation from Average</b>		-1.85	
						<b>Net Gain/loss (Rain - ET)</b>			<b>0.27</b>

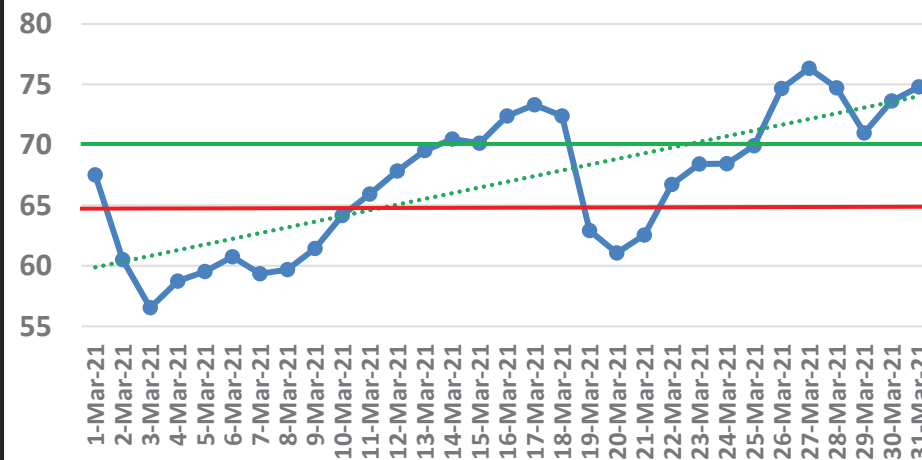
<b>Year Cumulative</b>	
<b>Rain</b>	<b>ET</b>
15.4	6.6
32.0	
15.4	
0.0	
	8.7



## March Marianna FAWN 6' Air Temps



## March Avg Soil Temps Marianna





YEAR	JAN	FEB	MAR	APR	MAY	JUNE	JULY	AUG	SEP	OCT	NOV	DEC	TOTAL
1952	1.14	8.88	4.48	2.11	5.13	1.12	5.95	8.81	3.09	0.65	3.26	3.42	48.04
1953	4.84	7.26	3.03	8.43	2.43	3.97	6.84	1.63	6.33	0.65	4.09	15.31	64.81
1954	1.33	3.49	2.62	2.58	1.96	3.46	3.28	2.84	1.72	1.30	2.66	1.44	28.68
1955	3.66	1.83	0.84	5.80	3.03	1.62	6.75	3.75	2.44	2.10	0.72	0.77	33.31
1956	3.59	5.18	3.77	2.04	4.03	5.45	8.52	4.09	6.44	5.08	0.28	3.34	51.81
1957	0.75	2.65	5.17	5.74	4.60	5.75	9.83	5.91	16.84	1.31	6.24	2.22	67.01
1958	4.48	3.61	4.73	7.22	5.57	6.00	8.39	3.45	3.68	1.88	1.75	2.32	53.08
1959	3.67	7.06	8.50	5.73	6.95	3.77	4.83	3.67	3.07	7.93	0.21	1.53	56.92
1960	3.36	7.08	3.41	6.80	3.20	4.75	4.97	4.80	6.22	2.00	0.47	2.35	49.41
1961	4.23	4.15	3.64	5.57	3.97	4.41	3.99	11.09	2.60	0.00	2.84	6.23	52.72
1962	1.72	2.80	8.13	3.28	2.86	3.67	7.97	6.07	3.07	2.82	5.16	1.67	49.22
1963	7.31	3.02	3.18	1.36	3.50	7.99	5.16	1.50	5.25	0.01	4.22	6.05	48.55
1964	10.80	6.81	6.41	9.47	2.23	5.68	9.22	3.07	7.47	9.61	3.35	6.44	80.56
1965	2.63	6.09	5.51	3.96	0.18	9.60	3.26	4.18	4.48	3.41	1.81	3.60	48.71
1966	5.56	9.84	2.57	0.77	5.80	3.13	3.25	9.82	5.09	1.41	2.03	4.62	53.89
1967	8.27	3.32	2.19	0.13	2.61	7.02	6.49	3.58	1.40	1.86	2.40	7.98	47.25
1968	1.28	2.30	3.40	2.50	3.39	1.18	5.45	4.61	2.99	1.41	5.11	5.34	38.96
1969	1.68	3.49	7.08	4.54	3.01	1.71	13.18	3.05	5.64	1.50	1.22	3.80	49.90
1970	4.16	9.20	8.86	1.83	1.81	3.69	5.04	8.01	0.49	4.40	2.21	3.13	52.83
1971	1.97	6.11	7.15	3.17	3.03	3.85	5.20	6.76	2.47	1.84	1.94	3.70	47.19
1972	3.62	6.03	6.41	0.38	2.87	8.89	3.78	5.39	2.14	2.44	3.29	3.77	49.01
1973	8.14	7.71	8.38	7.60	6.87	3.63	11.12	4.51	5.40	0.27	3.64	5.33	72.60
1974	5.24	5.80	2.66	3.40	3.78	1.56	3.29	8.01	4.68	0.84	2.14	2.89	44.29
1975	10.21	6.36	4.91	10.35	3.97	4.10	13.71	5.40	3.81	4.35	2.89	3.28	73.34
1976	6.99	1.50	4.89	1.87	8.89	3.08	3.03	3.47	5.47	6.18	5.72	3.97	55.06
1977	3.47	1.81	6.52	0.88	0.60	6.36	3.55	5.22	9.83	2.59	8.14	4.19	53.16
1978	7.28	3.28	7.25	4.65	6.73	3.79	7.25	4.90	0.98	0.20	6.01	3.65	55.97
1979	7.30	7.78	3.26	7.75	6.22	1.31	7.49	6.30	11.51	0.53	4.47	2.84	66.76
1980	6.58	2.96	11.54	9.29	4.50	3.50	5.87	2.53	4.56	4.71	1.52	0.25	57.81
1981	1.70	5.32	5.94	3.03	2.73	4.74	4.02	2.53	2.44	1.75	0.85	4.94	39.99
1982	4.17	5.61	2.91	5.93	5.39	3.00	7.51	4.42	6.00	2.65	2.34	9.14	59.07
1983	4.92	6.84	8.53	7.88	2.27	5.66	1.19	2.53	8.97	3.52	5.90	7.65	65.86
1984	5.49	5.01	8.62	6.29	2.50	5.31	12.01	5.76	0.32	1.60	1.63	0.80	55.34
1985	4.60	4.46	2.60	1.18	4.44	5.68	3.68	5.58	1.42	7.42	7.91	5.34	54.31
1986	5.68	10.27	3.21	0.83	2.26	1.85	2.75	4.12	2.35	2.22	4.40	5.68	45.62
1987	8.62	5.52	7.23	0.40	4.46	5.43	5.51	4.18	2.27	0.06	4.02	0.81	48.51
1988	5.57	6.40	8.41	2.69	0.28	1.07	5.43	3.98	5.53	1.98	3.28	1.23	45.85
1989	1.59	2.74	4.96	3.63	7.01	12.90	11.19	3.06	3.36	7.20	4.71	5.45	67.80
1990	5.26	4.57	4.55	3.00	3.22	4.02	3.65	2.91	0.85	1.34	0.93	3.42	37.72
1991	13.62	3.44	9.00	5.32	10.03	5.30	10.67	3.89	1.53	1.17	1.60	3.00	68.57
1992	8.37	6.29	7.92	2.50	1.41	11.16	8.69	6.72	3.19	2.08	7.40	2.93	68.66
1993	12.00	3.38	7.41	1.50	1.60	4.18	6.68	3.89	3.44	2.90	2.27	3.63	52.88
1994	8.64	2.53	6.25	4.34	1.82	11.41	10.95	9.08	6.44	7.62	2.53	3.79	75.40
1995	5.23	3.13	4.29	4.35	3.90	5.56	3.02	6.16	0.86	7.51	4.12	1.78	49.91
1996	3.64	5.99	8.47	5.76	1.50	5.43	2.83	14.28	5.32	3.81	2.01	3.65	62.69
1997	6.68	5.29	2.63	10.08	5.91	6.41	5.73	4.65	3.78	2.10	6.85	8.44	68.55
1998	6.28	8.30	6.11	2.24	1.45	2.35	4.37	2.20	16.31	0.30	2.05	1.98	53.94
1999	6.95	2.90	3.61	1.50	6.71	8.99	8.64	4.02	4.33	3.13	3.56	2.50	56.84

YEAR	JAN	FEB	MAR	APR	MAY	JUNE	JULY	AUG	SEP	OCT	NOV	DEC	TOTAL
2000	3.78	4.96	4.48	4.05	0.09	4.00	3.40	7.15	7.20	0.71	4.43	3.21	47.46
2001	2.16	0.82	10.00	1.99	2.52	8.24	4.66	8.21	1.90	1.51	1.70	0.78	44.49
2002	3.82	2.44	5.51	5.78	2.19	3.45	10.34	3.30	11.83	7.36	7.76	5.99	69.77
2003	2.30	7.03	8.18	4.89	3.11	6.11	7.84	5.99	2.39	3.58	3.04	3.12	57.58
2004	3.19	7.66	0.90	4.37	1.19	6.66	4.92	1.67	10.01	3.89	4.97	3.25	52.68
2005	3.33	2.31	9.05	7.04	1.67	7.47	9.44	11.71	1.62	0.03	3.15	4.81	61.63
2006	4.82	3.90	0.91	1.61	4.97	1.99	2.22	5.18	0.91	3.09	3.41	5.43	38.44
2007	5.99	2.45	1.10	0.99	1.57	3.97	3.94	4.18	1.27	4.79	1.89	4.03	36.17
2008	4.26	9.00	9.11	4.28	1.46	8.64	4.02	9.29	0.74	5.11	3.18	8.23	67.32
2009	2.33	3.26	7.11	7.73	9.17	2.78	3.88	3.19	5.22	3.39	2.35	9.57	59.98
2010	7.53	3.99	3.41	4.01	5.09	2.92	2.31	0.84	1.33	0.22	5.82	0.63	38.10
2011	4.33	4.04	5.00	0.92	0.78	1.66	5.11	1.87	2.26	1.84	1.94	3.75	33.50
2012	3.79	7.49	5.94	3.17	1.42	7.35	5.05	14.35	5.17	1.75	1.30	4.10	60.88
2013	1.05	12.86	2.99	3.54	0.64	3.72	13.39	13.17	2.14	1.96	3.91	4.44	63.81
2014	2.15	4.99	7.70	13.18	4.03	2.32	5.69	2.55	6.03	2.03	5.93	5.32	61.92
2015	3.4	3.8	2.17	9.52	3.55	4.04	4.85	2.75	4.15	1.00	7.33	8.67	55.23
2016	4.8	3.51	8.15	4.94	1.74	3.49	2.79	7.28	4.19	0.22	0.8	12.33	54.24
2017	7.28	3.78	2.11	2.12	4.28	11.53	6.82	4.47	3.75	0.97	0.2	2.76	50.07
2018	4.26	10.50	5.38	3.72	5.06	7.97	5.99	5.67	2.67	5.66	6.94	11.86	75.68
2019	6.53	2.76	3.43	3.94	1.78	3.62	6.36	4.15	0.31	6.43	1.74	6.95	48.00
2020	4.06	6.42	2.02	4.42	2.16	5.31	4.00	8.81	13.44	3.19	1.95	4.53	60.31
<b>2021</b>	<b>5.45</b>	<b>6.43</b>	<b>3.48</b>										<b>15.36</b>

Deviation from the Average Monthly Rainfall

Inches	0.53	1.31	-1.85										-0.01
--------	------	------	-------	--	--	--	--	--	--	--	--	--	-------

Monthly Average Rainfall, 1952-2020

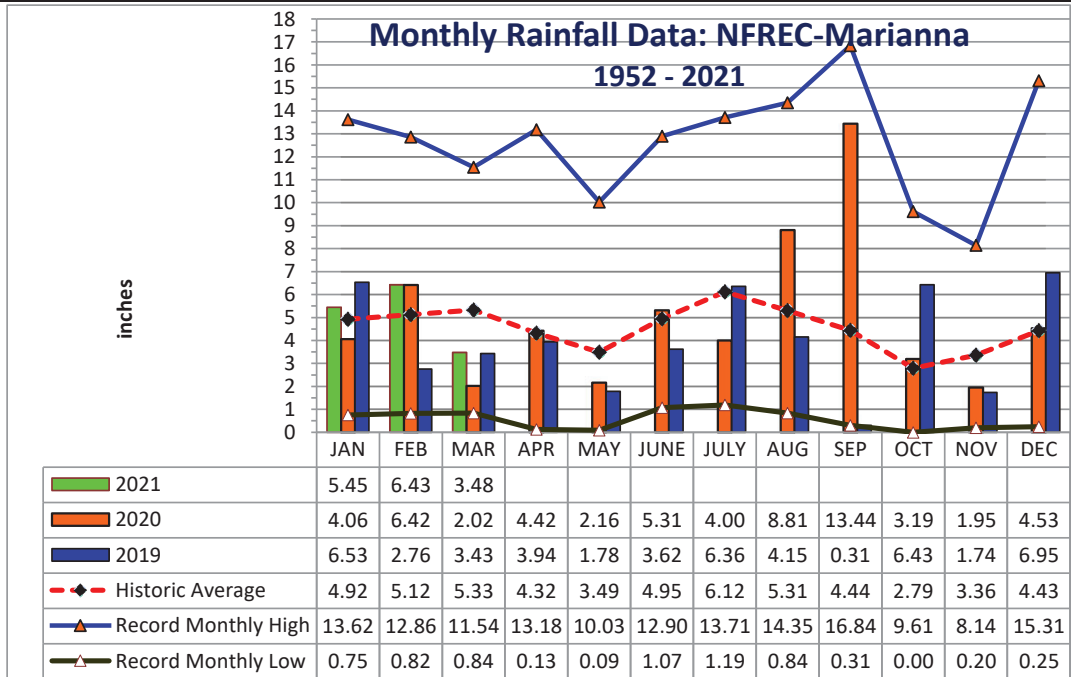
AVG.	4.92	5.12	5.33	4.32	3.49	4.95	6.12	5.31	4.44	2.79	3.36	4.43	54.57
------	------	------	------	------	------	------	------	------	------	------	------	------	-------

% of Annual Rainfall Occuring each Month

	9.0%	9.4%	9.8%	7.9%	6.4%	9.1%	11.2%	9.7%	8.1%	5.1%	6.2%	8.1%	
--	------	------	------	------	------	------	-------	------	------	------	------	------	--

Record High/Low for the Month

<b>LOW</b>	0.75	0.82	0.84	0.13	0.09	1.07	1.19	0.84	0.31	0.00	0.20	0.25	28.68
<b>HIGH</b>	13.62	12.86	11.54	13.18	10.03	12.90	13.71	14.35	16.84	9.61	8.14	15.31	80.56



**Jackson County**  
**Monthly Cumulative Rainfall, 1952 -2020**  
North Florida Research & Education Center Marianna,  
FL



YEAR	JAN	FEB	MAR	APR	MAY	JUNE	JULY	AUG	SEP	OCT	NOV	DEC
1952	1.14	10.02	14.50	16.61	21.74	22.86	28.81	37.62	40.71	41.36	44.62	48.04
1953	4.84	12.10	15.13	23.56	25.99	29.96	36.80	38.43	44.76	45.41	49.50	64.81
1954	1.33	4.82	7.44	10.02	11.98	15.44	18.72	21.56	23.28	24.58	27.24	28.68
1955	3.66	5.49	6.33	12.13	15.16	16.78	23.53	27.28	29.72	31.82	32.54	33.31
1956	3.59	8.77	12.54	14.58	18.61	24.06	32.58	36.67	43.11	48.19	48.47	51.81
1957	0.75	3.40	8.57	14.31	18.91	24.66	34.49	40.40	57.24	58.55	64.79	67.01
1958	4.48	8.09	12.82	20.04	25.61	31.61	40.00	43.45	47.13	49.01	50.76	53.08
1959	3.67	10.73	19.23	24.96	31.91	35.68	40.51	44.18	47.25	55.18	55.39	56.92
1960	3.36	10.44	13.85	20.65	23.85	28.60	33.57	38.37	44.59	46.59	47.06	49.41
1961	4.23	8.38	12.02	17.59	21.56	25.97	29.96	41.05	43.65	43.65	46.49	52.72
1962	1.72	4.52	12.65	15.93	18.79	22.46	30.43	36.50	39.57	42.39	47.55	49.22
1963	7.31	10.33	13.51	14.87	18.37	26.36	31.52	33.02	38.27	38.28	42.50	48.55
1964	10.80	17.61	24.02	33.49	35.72	41.40	50.62	53.69	61.16	70.77	74.12	80.56
1965	2.63	8.72	14.23	18.19	18.37	27.97	31.23	35.41	39.89	43.30	45.11	48.71
1966	5.56	15.40	17.97	18.74	24.54	27.67	30.92	40.74	45.83	47.24	49.27	53.89
1967	8.27	11.59	13.78	13.91	16.52	23.54	30.03	33.61	35.01	36.87	39.27	47.25
1968	1.28	3.58	6.98	9.48	12.87	14.05	19.50	24.11	27.10	28.51	33.62	38.96
1969	1.68	5.17	12.25	16.79	19.80	21.51	34.69	37.74	43.38	44.88	46.10	49.90
1970	4.16	13.36	22.22	24.05	25.86	29.55	34.59	42.60	43.09	47.49	49.70	52.83
1971	1.97	8.08	15.23	18.40	21.43	25.28	30.48	37.24	39.71	41.55	43.49	47.19
1972	3.62	9.65	16.06	16.44	19.31	28.20	31.98	37.37	39.51	41.95	45.24	49.01
1973	8.14	15.85	24.23	31.83	38.70	42.33	53.45	57.96	63.36	63.63	67.27	72.60
1974	5.24	11.04	13.70	17.10	20.88	22.44	25.73	33.74	38.42	39.26	41.40	44.29
1975	10.21	16.57	21.48	31.83	35.80	39.90	53.61	59.01	62.82	67.17	70.06	73.34
1976	6.99	8.49	13.38	15.25	24.14	27.22	30.25	33.72	39.19	45.37	51.09	55.06
1977	3.47	5.28	11.80	12.68	13.28	19.64	23.19	28.41	38.24	40.83	48.97	53.16
1978	7.28	10.56	17.81	22.46	29.19	32.98	40.23	45.13	46.11	46.31	52.32	55.97
1979	7.30	15.08	18.34	26.09	32.31	33.62	41.11	47.41	58.92	59.45	63.92	66.76
1980	6.58	9.54	21.08	30.37	34.87	38.37	44.24	46.77	51.33	56.04	57.56	57.81
1981	1.70	7.02	12.96	15.99	18.72	23.46	27.48	30.01	32.45	34.20	35.05	39.99
1982	4.17	9.78	12.69	18.62	24.01	27.01	34.52	38.94	44.94	47.59	49.93	59.07
1983	4.92	11.76	20.29	28.17	30.44	36.10	37.29	39.82	48.79	52.31	58.21	65.86
1984	5.49	10.50	19.12	25.41	27.91	33.22	45.23	50.99	51.31	52.91	54.54	55.34
1985	4.60	9.06	11.66	12.84	17.28	22.96	26.64	32.22	33.64	41.06	48.97	54.31
1986	5.68	15.95	19.16	19.99	22.25	24.10	26.85	30.97	33.32	35.54	39.94	45.62
1987	8.62	14.14	21.37	21.77	26.23	31.66	37.17	41.35	43.62	43.68	47.70	48.51
1988	5.57	11.97	20.38	23.07	23.35	24.42	29.85	33.83	39.36	41.34	44.62	45.85
1989	1.59	4.33	9.29	12.92	19.93	32.83	44.02	47.08	50.44	57.64	62.35	67.80
1990	5.26	9.83	14.38	17.38	20.60	24.62	28.27	31.18	32.03	33.37	34.30	37.72
1991	13.62	17.06	26.06	31.38	41.41	46.71	57.38	61.27	62.80	63.97	65.57	68.57
1992	8.37	14.66	22.58	25.08	26.49	37.65	46.34	53.06	56.25	58.33	65.73	68.66
1993	12.00	15.38	22.79	24.29	25.89	30.07	36.75	40.64	44.08	46.98	49.25	52.88
1994	8.64	11.17	17.42	21.76	23.58	34.99	45.94	55.02	61.46	69.08	71.61	75.40
1995	5.23	8.36	12.65	17.00	20.90	26.46	29.48	35.64	36.50	44.01	48.13	49.91
1996	3.64	9.63	18.10	23.86	25.36	30.79	33.62	47.90	53.22	57.03	59.04	62.69
1997	6.68	11.97	14.60	24.68	30.59	37.00	42.73	47.38	51.16	53.26	60.11	68.55
1998	6.28	14.58	20.69	22.93	24.38	26.73	31.10	33.30	49.61	49.91	51.96	53.94
1999	6.95	9.85	13.46	14.96	21.67	30.66	39.30	43.32	47.65	50.78	54.34	56.84

YEAR	JAN	FEB	MAR	APR	MAY	JUNE	JULY	AUG	SEP	OCT	NOV	DEC
2000	3.78	8.74	13.22	17.27	17.36	21.36	24.76	31.91	39.11	39.82	44.25	47.46
2001	2.16	2.98	12.98	14.97	17.49	25.73	30.39	38.60	40.50	42.01	43.71	44.49
2002	3.82	6.26	11.77	17.55	19.74	23.19	33.53	36.83	48.66	56.02	63.78	69.77
2003	2.30	9.33	17.51	22.40	25.51	31.62	39.46	45.45	47.84	51.42	54.46	57.58
2004	3.19	10.85	11.75	16.12	17.31	23.97	28.89	30.56	40.57	44.46	49.43	52.68
2005	3.33	5.64	14.69	21.73	23.40	30.87	40.31	52.02	53.64	53.67	56.82	61.63
2006	4.82	8.72	9.63	11.24	16.21	18.20	20.42	25.60	26.51	29.60	33.01	38.44
2007	5.99	8.44	9.54	10.53	12.10	16.07	20.01	24.19	25.46	30.25	32.14	36.17
2008	4.26	13.26	22.37	26.65	28.11	36.75	40.77	50.06	50.80	55.91	59.09	67.32
2009	2.33	5.59	12.70	20.43	29.60	32.38	36.26	39.45	44.67	48.06	50.41	59.98
2010	7.53	11.52	14.93	18.94	24.03	26.95	29.26	30.10	31.43	31.65	37.47	38.10
2011	4.33	8.37	13.37	14.29	15.07	16.73	21.84	23.71	25.97	27.81	29.75	33.50
2012	3.79	11.28	17.22	20.39	21.81	29.16	34.21	48.56	53.73	55.48	56.78	60.88
2013	1.05	13.91	16.90	20.44	21.08	24.80	38.19	51.36	53.50	55.46	59.37	63.81
2014	2.15	7.14	14.84	28.02	32.05	34.37	40.06	42.61	48.64	50.67	56.60	61.92
2015	3.40	7.20	9.37	18.89	22.44	26.48	31.33	34.08	38.23	39.23	46.56	55.23
2016	4.80	8.31	16.46	21.40	23.14	26.63	29.42	36.70	40.89	41.11	41.91	54.24
2017	7.28	11.06	13.17	15.29	19.57	31.10	37.92	42.39	46.14	47.11	47.31	50.07
2018	4.26	14.76	20.14	23.86	28.92	36.89	42.88	48.55	51.22	56.88	63.82	75.68
2019	6.53	9.29	12.72	16.66	18.44	22.06	28.42	32.57	32.88	39.31	41.05	48.00
2020	4.06	10.48	12.50	16.92	19.08	24.39	28.39	37.20	50.64	53.83	55.78	60.31
2021	5.45	11.88	15.36									

**Deviation from the Average Accumulation**

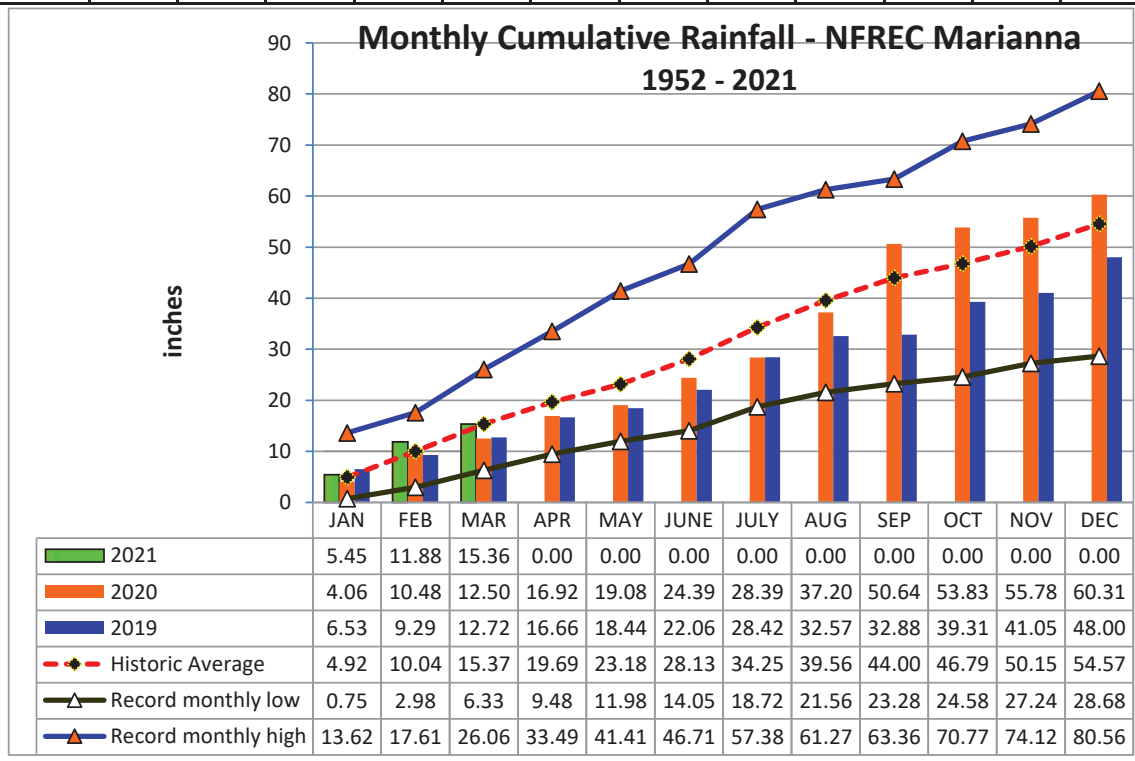
Inches	0.53	1.84	-0.01									
--------	------	------	-------	--	--	--	--	--	--	--	--	--

**Average Accumulation, 1952-2020**

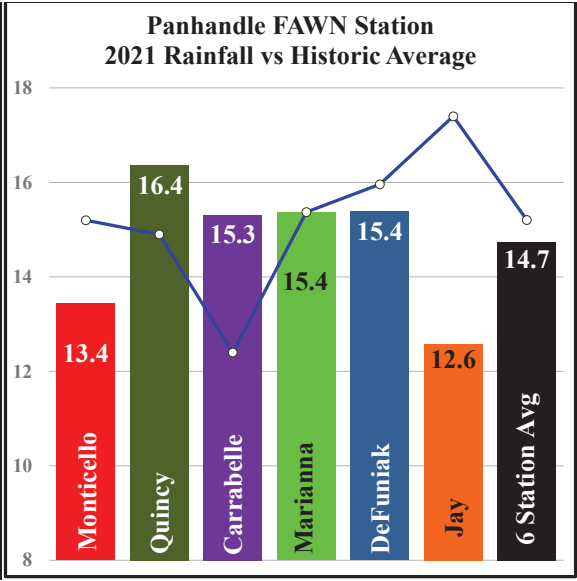
Inches	4.92	10.04	15.37	19.69	23.18	28.13	34.25	39.56	44.00	46.79	50.15	54.57
--------	------	-------	-------	-------	-------	-------	-------	-------	-------	-------	-------	-------

**Record High/Low Accumulation**

<b>LOW</b>	<b>0.75</b>	<b>2.98</b>	<b>6.33</b>	<b>9.48</b>	<b>11.98</b>	<b>14.05</b>	<b>18.72</b>	<b>21.56</b>	<b>23.28</b>	<b>24.58</b>	<b>27.24</b>	<b>28.68</b>
<b>HIGH</b>	<b>13.62</b>	<b>17.61</b>	<b>26.06</b>	<b>33.49</b>	<b>41.41</b>	<b>46.71</b>	<b>57.38</b>	<b>61.27</b>	<b>63.36</b>	<b>70.77</b>	<b>74.12</b>	<b>80.56</b>



2021 UF/IFAS FAWN Panhandle Weather Station Summary					
FAWN Station	Data	Jan	Feb	Mar	Total
Monticello	Rain	6.7	4.3	2.4	13.4
	Hist Avg	4.5	4.6	6.1	15.2
	Deviation	2.2	-0.3	-3.7	-1.8
Quincy	Rain	7.2	6.2	3.0	16.4
	Hist Avg	5.0	4.3	5.6	14.9
	Deviation	2.2	1.9	-2.6	1.5
Carrabelle	Rain	8.3	4.1	2.9	15.3
	Hist Avg	3.8	3.7	4.9	12.4
	Deviation	4.5	0.4	-2.0	2.9
Marianna	Rain	5.5	6.4	3.5	15.4
	Hist Avg	4.9	5.1	5.3	15.4
	Deviation	0.5	1.3	-1.9	0.0
DeFuniak	Rain	4.3	4.7	6.4	15.4
	Hist Avg	4.9	5.4	5.6	16.0
	Deviation	-0.7	-0.7	0.8	-0.6
Jay	Rain	2.0	5.1	5.4	12.6
	Hist Avg	5.5	5.3	6.6	17.4
	Deviation	-3.5	-0.2	-1.2	-4.8
<b>6 Station Average</b>		<b>5.7</b>	<b>5.1</b>	<b>3.9</b>	<b>14.7</b>
<b>6 Station Historic Average</b>		<b>4.8</b>	<b>4.7</b>	<b>5.7</b>	<b>15.2</b>
<b>Deviation from Avg</b>		<b>0.9</b>	<b>0.4</b>	<b>-1.8</b>	<b>-0.5</b>



FAWN Station	Monticello	Quincy	Carrabelle	Marianna	DeFuniak	Jay	Average
Rainfall	13.4	16.4	15.3	15.4	15.4	12.6	14.7
Historic Average	15.2	14.9	12.4	15.4	16.0	17.4	15.2