



Jackson County 2013 Weather Data

61 Years of Weather Data Recorded at the UF/IFAS Marianna North Florida Research and Education Center



Doug Mayo
Jackson County Extension Director

1952-2008 Rainfall Data compiled by
 Ed Jowers, Emeritus County Extension Director

Data provided by Florida Automated Weather Station (FAWN)
 UF/IFAS North Florida Research and Education Center
 Greenwood, Florida



<http://fawn.ifas.ufl.edu/station.php?id=130>

Tower Name	Tower Number	Latitude Degree, Minutes	Latitude Degrees Minutes, Seconds	Latitude Degrees Decimal	Longitude Degree, Minutes	Longitude Degrees Minutes, Seconds	Longitude Degrees Decimal	Elevation Feet
Marianna	130.00	N 30°51.000'	N 30°50'00.00"	N 30.85000°	-85°09.910'	-85°09'54.60"	-85.16516°	115'

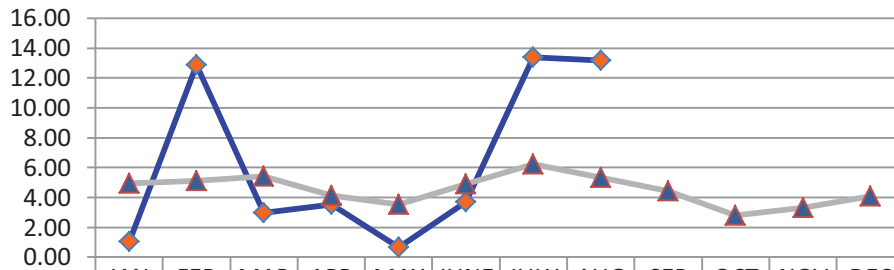
2013 Marianna FAWN Weather Summary

Month	Air Temp			Soil Temp			Rainfall Inches	Dev from 61 yr Avg
	High	Low	Avg	High	Low	Avg		
January	82	31	58	64	44	53	1.05	-3.90
February	77	27	55	61	42	52	12.86	7.74
March	83	29	55	66	42	53	2.99	-2.44
April	88	40	67	75	50	64	3.54	-0.59
May	94	44	73	90	57	73	0.64	-2.88
June	97	68	80	89	68	78	3.72	-1.17
July	96	69	78	84	67	75	13.39	7.17
August	96	66	79	89	68	77	13.17	7.84
2013	97	27	68	90	42	66	51.36	11.76

Data: UF/IFAS Florida Automated Weather Network Marianna Station

Total days in 2013 <32° and >95° 7 9

Monthly Rainfall @ Marianna FAWN



	JAN	FEB	MAR	APR	MAY	JUNE	JULY	AUG	SEP	OCT	NOV	DEC
2013	1.05	12.86	2.99	3.54	0.64	3.72	13.39	13.17				
61 yr avg	4.95	5.12	5.43	4.13	3.52	4.89	6.22	5.33	4.42	2.80	3.33	4.07

◆ 2013 ▲ 61 yr avg

January Daily Weather Data

Temperature							Precipitation			
Date	Air Temp 2 ft			Soil Temp 4 inch			Rain	Evapo Trans		
	Avg	Min	Max	Avg	Min	Max	Inches	Inches		
1-Jan-13	63	49	76	49	45	53	0.00	0.06		
2-Jan-13	60	53	69	53	52	54	0.00	0.05		
3-Jan-13	47	39	53	50	47	52	0.34	0.04		
4-Jan-13	44	36	56	46	44	49	0.00	0.04		
5-Jan-13	47	37	58	46	44	48	0.06	0.04		
6-Jan-13	50	45	56	47	46	49	0.00	0.04		
7-Jan-13	49	40	62	47	44	50	0.01	0.04		
8-Jan-13	57	45	72	49	46	53	0.00	0.05		
9-Jan-13	64	60	70	53	50	55	0.00	0.05		
10-Jan-13	69	63	80	56	54	60	0.00	0.06		
11-Jan-13	68	61	80	57	55	60	0.00	0.06		
12-Jan-13	68	58	79	58	55	61	0.00	0.06		
13-Jan-13	70	64	80	59	57	62	0.00	0.07		
14-Jan-13	71	63	80	61	59	63	0.00	N/A		
15-Jan-13	69	64	78	60	59	62	0.00	0.06		
16-Jan-13	71	65	80	62	60	64	0.06	0.07		
17-Jan-13	49	42	65	57	51	61	0.03	0.06		
18-Jan-13	47	37	61	51	48	55	0.00	0.04		
19-Jan-13	49	36	65	51	47	55	0.00	0.05		
20-Jan-13	54	42	69	52	49	56	0.00	0.05		
21-Jan-13	52	37	68	51	48	55	0.00	0.05		
22-Jan-13	46	35	59	50	47	53	0.00	0.05		
23-Jan-13	47	31	65	49	45	53	0.00	0.05		
24-Jan-13	57	42	73	50	47	54	0.00	0.06		
25-Jan-13	59	47	73	52	49	56	0.00	0.07		
26-Jan-13	61	49	76	54	51	58	0.00	0.07		
27-Jan-13	60	45	75	55	51	58	0.00	0.07		
28-Jan-13	65	55	79	57	54	60	0.00	0.08		
29-Jan-13	70	59	82	59	56	62	0.00	0.08		
30-Jan-13	68	51	79	60	56	62	0.54	0.08		
31-Jan-13	46	37	58	52	50	56	0.01	0.06		
High			82			64				
Low		31			44					
Average	58	48	70	53	50	56				
Days over 95 ^o	0			Total for Month			1.05	1.71	1.1	1.7
				Number of Rain Days			7.00		7.0	
Days below 32 ^o	1			Historic Average			4.95		5.0	
				Deviation from Average			-3.90		-3.9	
				Net Gain/loss (Rain - ET)				-0.66		-0.7

Year Cumulative	
Rain	ET
1.1	1.7
7.0	
5.0	
-3.9	
	-0.7

April Daily Weather Data

Date	Temperature						Precipitation	
	Air Temp 2 ft			Soil Temp 4 inch			Rain	Evapo Trans
	Avg	Min	Max	Avg	Min	Max	Inches	Inches
1-Apr-13	67	55	78	61	57	66	0.00	0.12
2-Apr-13	65	48	82	61	55	68	0.00	0.12
3-Apr-13	59	54	62	59	57	61	0.22	N/A
4-Apr-13	60	54	65	58	57	61	0.14	N/A
5-Apr-13	53	45	60	56	54	58	0.01	0.07
6-Apr-13	59	40	78	57	50	65	0.00	0.12
7-Apr-13	65	51	81	60	55	66	0.00	0.12
8-Apr-13	67	52	83	62	57	67	0.00	0.12
9-Apr-13	71	55	87	64	58	71	0.00	0.15
10-Apr-13	71	58	86	65	61	70	0.00	0.14
11-Apr-13	73	60	84	65	62	69	0.46	0.12
12-Apr-13	69	56	77	66	63	70	0.00	0.12
13-Apr-13	66	49	82	64	58	71	0.00	0.14
14-Apr-13	61	58	66	61	58	65	1.25	0.05
15-Apr-13	70	57	83	63	57	69	0.00	0.12
16-Apr-13	76	66	88	68	63	73	0.00	0.15
17-Apr-13	73	66	82	67	65	71	0.00	0.11
18-Apr-13	74	63	84	67	63	71	0.00	0.14
19-Apr-13	63	47	82	65	60	69	0.93	0.1
20-Apr-13	56	45	69	61	56	67	0.01	0.13
21-Apr-13	62	44	77	62	56	68	0.00	0.13
22-Apr-13	66	62	73	64	61	67	0.00	0.1
23-Apr-13	68	60	81	66	61	71	0.00	0.14
24-Apr-13	70	56	84	66	62	71	0.00	0.14
25-Apr-13	70	56	82	68	64	72	0.00	0.13
26-Apr-13	67	49	86	67	61	74	0.00	0.15
27-Apr-13	72	57	85	68	64	73	0.00	0.14
28-Apr-13	71	60	83	68	65	72	0.04	0.13
29-Apr-13	68	63	75	67	65	68	0.48	0.07
30-Apr-13	72	62	85	69	64	75	0.00	0.13
High			88			75		
Low		40			50			
Average	67	55	79	64	60	69		
Days over 95 ^o			0	Total for Month			3.54	3.40
				Number of Rain Days			9.00	
				59 year Average			4.13	
Days below 32 ^o		0		Deviation from Average			-0.59	
				Net Gain/loss (Rain - ET)				0.14

Year Cumulative	
Rain	ET
20.4	9.7
37.0	
19.6	
0.8	
	10.7

May Daily Weather Data

Temperature							Precipitation	
Date	Air Temp 2 ft			Soil Temp 4 inch			Rain	Evapo Trans
	Avg	Min	Max	Avg	Min	Max	Inches	Inches
1-May-13	68	65	72	67	65	69	0.12	0.07
2-May-13	68	63	77	65	63	68	0.04	0.09
3-May-13	66	64	71	65	64	67	0.21	0.08
4-May-13	58	49	64	62	60	64	0.27	0.08
5-May-13	60	45	76	61	57	66	0.00	0.13
6-May-13	59	44	70	61	57	65	0.00	0.12
7-May-13	65	53	76	64	59	69	0.00	0.14
8-May-13	69	54	83	66	60	72	0.00	0.15
9-May-13	74	63	87	69	64	75	0.00	0.16
10-May-13	71	59	82	69	65	73	0.00	0.14
11-May-13	71	62	79	68	66	70	0.00	0.1
12-May-13	72	62	82	70	65	76	0.00	0.16
13-May-13	65	51	78	70	64	76	0.00	0.16
14-May-13	68	48	84	70	64	78	0.00	0.15
15-May-13	72	54	88	73	66	80	0.00	0.17
16-May-13	74	62	87	74	69	81	0.00	0.16
17-May-13	74	59	89	75	69	82	0.00	0.16
18-May-13	74	62	87	75	71	80	0.00	0.14
19-May-13	77	65	92	77	72	84	0.00	0.16
20-May-13	81	70	94	80	74	87	0.00	0.18
21-May-13	80	66	93	80	75	86	0.00	0.16
22-May-13	80	69	93	81	76	87	0.00	0.17
23-May-13	80	70	93	82	76	88	0.00	0.2
24-May-13	78	66	90	81	76	88	0.00	0.2
25-May-13	74	56	91	80	73	88	0.00	0.17
26-May-13	77	59	94	81	74	89	0.00	0.18
27-May-13	78	63	93	82	75	89	0.00	0.18
28-May-13	79	66	93	82	75	90	0.00	0.19
29-May-13	80	71	94	81	77	87	0.00	0.17
30-May-13	81	72	92	80	76	85	0.00	0.16
31-May-13	81	72	93	81	76	86	0.00	0.17
High			94			90		
Low		44			57			
Average	73	61	85	73	68	79		
Total for Month							0.64	4.65
Days over 95 ^o								0
Days of 100 ^o								0
Days below 32 ^o							0	
Number of Rain Days							4.00	
59 year Average							3.52	
Deviation from Average							-2.88	
Net Gain/loss (Rain - ET)								-4.01

Year Cumulative	
Rain	ET
21.1	14.4
41.0	
23.2	
-2.1	
	6.7

July Daily Weather Data

Date	Temperature						Precipitation	
	Air Temp 2 ft			Soil Temp 4 inch			Rain	Evapo Trans
	Avg	Min	Max	Avg	Min	Max	Inches	Inches
1-Jul-13	78	69	90	75	71	80	0.01	0.15
2-Jul-13	80	72	91	76	73	81	0.00	0.15
3-Jul-13	74	71	76	73	70	76	1.22	0.05
4-Jul-13	72	69	73	69	67	70	2.37	0.04
5-Jul-13	74	70	81	69	67	72	0.87	0.09
6-Jul-13	75	72	84	70	68	73	1.63	0.1
7-Jul-13	76	70	88	72	68	76	1.05	0.12
8-Jul-13	79	72	91	74	70	80	0.00	0.16
9-Jul-13	82	71	93	76	71	82	0.00	0.19
10-Jul-13	78	72	89	76	73	78	0.09	0.11
11-Jul-13	76	72	85	74	72	77	0.12	0.11
12-Jul-13	78	71	91	75	71	81	1.03	0.15
13-Jul-13	75	70	84	73	71	77	0.44	0.12
14-Jul-13	77	72	87	74	71	78	0.33	0.14
15-Jul-13	78	72	90	75	71	80	0.03	0.16
16-Jul-13	80	74	92	76	72	81	0.00	0.19
17-Jul-13	82	72	93	77	73	83	0.00	0.19
18-Jul-13	81	73	93	78	73	84	0.00	0.2
19-Jul-13	80	73	90	78	75	83	0.08	0.16
20-Jul-13	76	71	86	75	74	78	1.17	0.11
21-Jul-13	78	73	87	75	72	79	0.15	0.15
22-Jul-13	75	72	84	74	72	76	0.57	0.09
23-Jul-13	77	69	91	74	71	79	1.12	N/A
24-Jul-13	76	70	90	74	71	78	0.84	N/A
25-Jul-13	81	72	91	76	71	81	0.01	0.18
26-Jul-13	82	72	92	78	73	83	0.00	0.19
27-Jul-13	78	72	90	76	74	80	0.00	0.12
28-Jul-13	79	73	87	76	73	79	0.19	0.14
29-Jul-13	82	74	96	78	73	84	0.00	0.19
30-Jul-13	81	74	94	78	75	83	0.00	0.14
31-Jul-13	79	74	92	78	75	83	0.07	0.15
High			96			84		
Low		69			67			
Average	78	72	88	75	72	79		
				Total for Month			13.39	4.04
Days over 95 ^o				1	Number of Rain Days			21.00
Days of 100 ^o				0	59 year Average			6.22
Days below 32 ^o				0	Deviation from Average			7.17
				Net Gain/loss (Rain - ET)				9.35

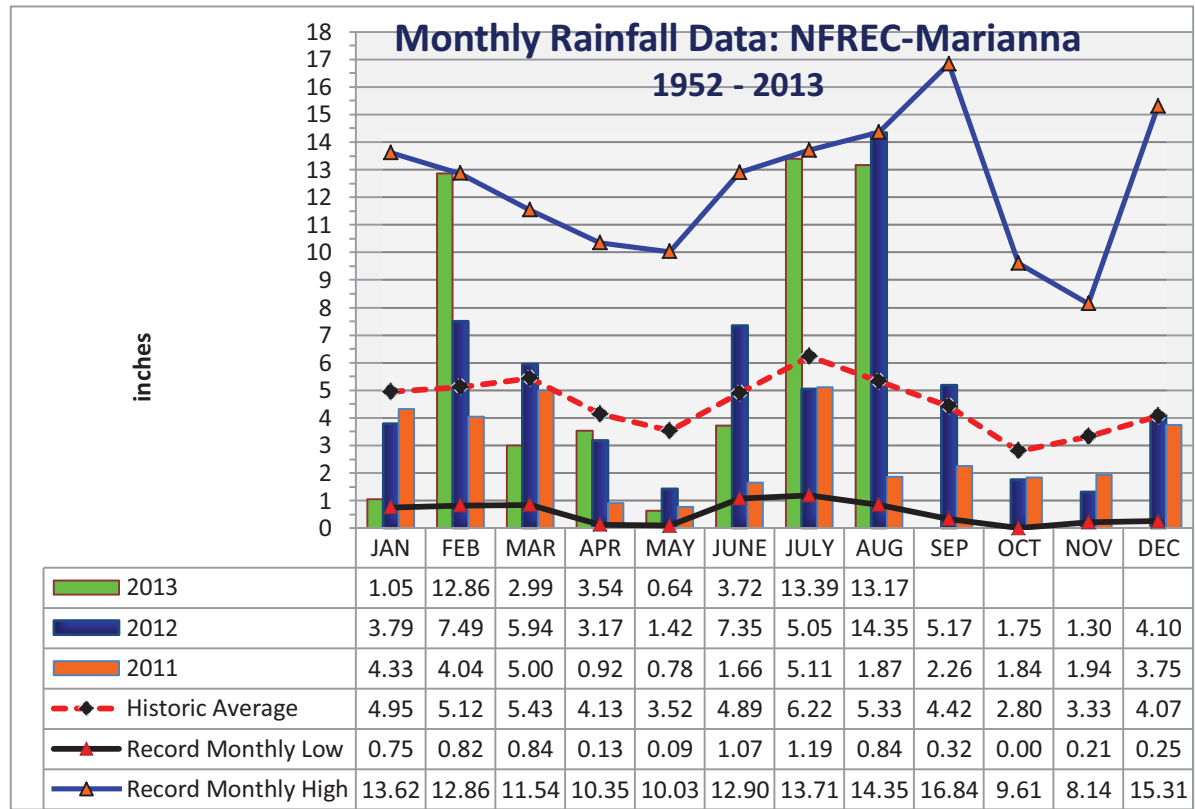
Year Cumulative	
Rain	ET
38.2	23.1
79.0	
34.3	
3.9	
	15.1

Jackson County
Monthly Total Rainfall, 1952 - 2012
No FL Research & Education Cntr, Marianna, FL



YEAR	JAN	FEB	MAR	APR	MAY	JUNE	JULY	AUG	SEP	OCT	NOV	DEC	TOTAL
1952	1.14	8.88	4.48	2.11	5.13	1.12	5.95	8.81	3.09	0.65	3.26	3.42	48.04
1953	4.84	7.26	3.03	8.43	2.43	3.97	6.84	1.63	6.33	0.65	4.09	<u>15.31</u>	64.81
1954	1.33	3.49	2.62	2.58	1.96	3.46	3.28	2.84	1.72	1.30	2.66	1.44	28.68
1955	3.66	1.83	0.84	5.80	3.03	1.62	6.75	3.75	2.44	2.10	0.72	0.77	33.31
1956	3.59	5.18	3.77	2.04	4.03	5.45	8.52	4.09	6.44	5.08	0.28	3.34	51.81
1957	0.75	2.65	5.17	5.74	4.60	5.75	9.83	5.91	<u>16.84</u>	1.31	6.24	2.22	67.01
1958	4.48	3.61	4.73	7.22	5.57	6.00	8.39	3.45	3.68	1.88	1.75	2.32	53.08
1959	3.67	7.06	8.50	5.73	6.95	3.77	4.83	3.67	3.07	7.93	0.21	1.53	56.92
1960	3.36	7.08	3.41	6.80	3.20	4.75	4.97	4.80	6.22	2.00	0.47	2.35	49.41
1961	4.23	4.15	3.64	5.57	3.97	4.41	3.99	11.09	2.60	0.00	2.84	6.23	52.72
1962	1.72	2.80	8.13	3.28	2.86	3.67	7.97	6.07	3.07	2.82	5.16	1.67	49.22
1963	7.31	3.02	3.18	1.36	3.50	7.99	5.16	1.50	5.25	0.01	4.22	6.05	48.55
1964	10.80	6.81	6.41	9.47	2.23	5.68	9.22	3.07	7.47	<u>9.61</u>	3.35	6.44	<u>80.56</u>
1965	2.63	6.09	5.51	3.96	0.18	9.60	3.26	4.18	4.48	3.41	1.81	3.60	48.71
1966	5.56	9.84	2.57	0.77	5.80	3.13	3.25	9.82	5.09	1.41	2.03	4.62	53.89
1967	8.27	3.32	2.19	0.13	2.61	7.02	6.49	3.58	1.40	1.86	2.40	7.98	47.25
1968	1.28	2.30	3.40	2.50	3.39	1.18	5.45	4.61	2.99	1.41	5.11	5.34	38.96
1969	1.68	3.49	7.08	4.54	3.01	1.71	13.18	3.05	5.64	1.50	1.22	3.80	49.90
1970	4.16	9.20	8.86	1.83	1.81	3.69	5.04	8.01	0.49	4.40	2.21	3.13	52.83
1971	1.97	6.11	7.15	3.17	3.03	3.85	5.20	6.76	2.47	1.84	1.94	3.70	47.19
1972	3.62	6.03	6.41	0.38	2.87	8.89	3.78	5.39	2.14	2.44	3.29	3.77	49.01
1973	8.14	7.71	8.38	7.60	6.87	3.63	11.12	4.51	5.40	0.27	3.64	5.33	72.60
1974	5.24	5.80	2.66	3.40	3.78	1.56	3.29	8.01	4.68	0.84	2.14	2.89	44.29
1975	10.21	6.36	4.91	<u>10.35</u>	3.97	4.10	<u>13.71</u>	5.40	3.81	4.35	2.89	3.28	73.34
1976	6.99	1.50	4.89	1.87	8.89	3.08	3.03	3.47	5.47	6.18	5.72	3.97	55.06
1977	3.47	1.81	6.52	0.88	0.60	6.36	3.55	5.22	9.83	2.59	<u>8.14</u>	4.19	53.16
1978	7.28	3.28	7.25	4.65	6.73	3.79	7.25	4.90	0.98	0.20	6.01	3.65	55.97
1979	7.30	7.78	3.26	7.75	6.22	1.31	7.49	6.30	11.51	0.53	4.47	2.84	66.76
1980	6.58	2.96	<u>11.54</u>	9.29	4.50	3.50	5.87	2.53	4.56	4.71	1.52	0.25	57.81
1981	1.70	5.32	5.94	3.03	2.73	4.74	4.02	2.53	2.44	1.75	0.85	4.94	39.99
1982	4.17	5.61	2.91	5.93	5.39	3.00	7.51	4.42	6.00	2.65	2.34	9.14	59.07
1983	4.92	6.84	8.53	7.88	2.27	5.66	1.19	2.53	8.97	3.52	5.90	7.65	65.86
1984	5.49	5.01	8.62	6.29	2.50	5.31	12.01	5.76	0.32	1.60	1.63	0.80	55.34
1985	4.60	4.46	2.60	1.18	4.44	5.68	3.68	5.58	1.42	7.42	7.91	5.34	54.31
1986	5.68	10.27	3.21	0.83	2.26	1.85	2.75	4.12	2.35	2.22	4.40	5.68	45.62
1987	8.62	5.52	7.23	0.40	4.46	5.43	5.51	4.18	2.27	0.06	4.02	0.81	48.51
1988	5.57	6.40	8.41	2.69	0.28	1.07	5.43	3.98	5.53	1.98	3.28	1.23	45.85
1989	1.59	2.74	4.96	3.63	7.01	<u>12.90</u>	11.19	3.06	3.36	7.20	4.71	5.45	67.80
1990	5.26	4.57	4.55	3.00	3.22	4.02	3.65	2.91	0.85	1.34	0.93	3.42	37.72
1991	<u>13.62</u>	3.44	9.00	5.32	<u>10.03</u>	5.30	10.67	3.89	1.53	1.17	1.60	3.00	68.57
1992	8.37	6.29	7.92	2.50	1.41	11.16	8.69	6.72	3.19	2.08	7.40	2.93	68.66
1993	12.00	3.38	7.41	1.50	1.60	4.18	6.68	3.89	3.44	2.90	2.27	3.63	52.88
1994	8.64	2.53	6.25	4.34	1.82	11.41	10.95	9.08	6.44	7.62	2.53	3.79	75.40
1995	5.23	3.13	4.29	4.35	3.90	5.56	3.02	6.16	0.86	7.51	4.12	1.78	49.91

YEAR	JAN	FEB	MAR	APR	MAY	JUNE	JULY	AUG	SEP	OCT	NOV	DEC	TOTAL
1996	3.64	5.99	8.47	5.76	1.50	5.43	2.83	14.28	5.32	3.81	2.01	3.65	62.69
1997	6.68	5.29	2.63	10.08	5.91	6.41	5.73	4.65	3.78	2.10	6.85	8.44	68.55
1998	6.28	8.30	6.11	2.24	1.45	2.35	4.37	2.20	16.31	0.30	2.05	1.98	53.94
1999	6.95	2.90	3.61	1.50	6.71	8.99	8.64	4.02	4.33	3.13	3.56	2.50	56.84
2000	3.78	4.96	4.48	4.05	0.09	4.00	3.40	7.15	7.20	0.71	4.43	3.21	47.46
2001	2.16	0.82	10.00	1.99	2.52	8.24	4.66	8.21	1.90	1.51	1.70	0.78	44.49
2002	3.82	2.44	5.51	5.78	2.19	3.45	10.34	3.30	11.83	7.36	7.76	5.99	69.77
2003	2.30	7.03	8.18	4.89	3.11	6.11	7.84	5.99	2.39	3.58	3.04	3.12	57.58
2004	3.19	7.66	0.90	4.37	1.19	6.66	4.92	1.67	10.01	3.89	4.97	3.25	52.68
2005	3.33	2.31	9.05	7.04	1.67	7.47	9.44	11.71	1.62	0.03	3.15	4.81	61.63
2006	4.82	3.90	0.91	1.61	4.97	1.99	2.22	5.18	0.91	3.09	3.41	5.43	38.44
2007	5.99	2.45	1.10	0.99	1.57	3.97	3.94	4.18	1.27	4.79	1.89	4.03	36.17
2008	4.26	9.00	9.11	4.28	1.46	8.64	4.02	9.29	0.74	5.11	3.18	8.23	67.32
2009	2.33	3.26	7.11	7.73	9.17	2.78	3.88	3.19	5.22	3.39	2.35	9.57	59.98
2010	7.53	3.99	3.41	4.01	5.09	2.92	2.31	0.84	1.33	0.22	5.82	0.63	38.10
2011	4.33	4.04	5.00	0.92	0.78	1.66	5.11	1.87	2.26	1.84	1.94	3.75	33.50
2012	3.79	7.49	5.94	3.17	1.42	7.35	5.05	14.35	5.17	1.75	1.30	4.10	60.88
2013	1.05	12.86	2.99	3.54	0.64	3.72	13.39	13.17					
Deviation from the Average Monthly Rainfall													
Inches	-3.90	7.74	-2.44	-0.59	-2.88	-1.17	7.17	7.84					
Monthly Average Rainfall, 1952-2013													
AVG.	4.95	5.12	5.43	4.13	3.52	4.89	6.22	5.33	4.42	2.80	3.33	4.07	54.04
% of Annual Rainfall Occuring each Month													
	9.2%	9.5%	10.1%	7.6%	6.5%	9.1%	11.5%	9.9%	8.2%	5.2%	6.2%	7.5%	
Record High/Low for the Month													
LOW	0.75	0.82	0.84	0.13	0.09	1.07	1.19	0.84	0.32	0.00	0.21	0.25	28.68
HIGH	13.62	12.86	11.54	10.35	10.03	12.90	13.71	14.35	16.84	9.61	8.14	15.31	80.56



Jackson County

Monthly Cumulative Rainfall, 1952 -2012

North Florida Research & Education Center Marianna,



YEAR	JAN	FEB	MAR	APR	MAY	JUNE	JULY	AUG	SEP	OCT	NOV	DEC
1952	1.14	10.02	14.50	16.61	21.74	22.86	28.81	37.62	40.71	41.36	44.62	48.04
1953	4.84	12.10	15.13	23.56	25.99	29.96	36.80	38.43	44.76	45.41	49.50	64.81
1954	1.33	4.82	7.44	10.02	11.98	15.44	18.72	21.56	23.28	24.58	27.24	28.68
1955	3.66	5.49	6.33	12.13	15.16	16.78	23.53	27.28	29.72	31.82	32.54	33.31
1956	3.59	8.77	12.54	14.58	18.61	24.06	32.58	36.67	43.11	48.19	48.47	51.81
1957	0.75	3.40	8.57	14.31	18.91	24.66	34.49	40.40	57.24	58.55	64.79	67.01
1958	4.48	8.09	12.82	20.04	25.61	31.61	40.00	43.45	47.13	49.01	50.76	53.08
1959	3.67	10.73	19.23	24.96	31.91	35.68	40.51	44.18	47.25	55.18	55.39	56.92
1960	3.36	10.44	13.85	20.65	23.85	28.60	33.57	38.37	44.59	46.59	47.06	49.41
1961	4.23	8.38	12.02	17.59	21.56	25.97	29.96	41.05	43.65	43.65	46.49	52.72
1962	1.72	4.52	12.65	15.93	18.79	22.46	30.43	36.50	39.57	42.39	47.55	49.22
1963	7.31	10.33	13.51	14.87	18.37	26.36	31.52	33.02	38.27	38.28	42.50	48.55
1964	10.80	<u>17.61</u>	24.02	<u>33.49</u>	35.72	41.40	50.62	53.69	61.16	<u>70.77</u>	<u>74.12</u>	<u>80.56</u>
1965	2.63	8.72	14.23	18.19	18.37	27.97	31.23	35.41	39.89	43.30	45.11	48.71
1966	5.56	15.40	17.97	18.74	24.54	27.67	30.92	40.74	45.83	47.24	49.27	53.89
1967	8.27	11.59	13.78	13.91	16.52	23.54	30.03	33.61	35.01	36.87	39.27	47.25
1968	1.28	3.58	6.98	9.48	12.87	14.05	19.50	24.11	27.10	28.51	33.62	38.96
1969	1.68	5.17	12.25	16.79	19.80	21.51	34.69	37.74	43.38	44.88	46.10	49.90
1970	4.16	13.36	22.22	24.05	25.86	29.55	34.59	42.60	43.09	47.49	49.70	52.83
1971	1.97	8.08	15.23	18.40	21.43	25.28	30.48	37.24	39.71	41.55	43.49	47.19
1972	3.62	9.65	16.06	16.44	19.31	28.20	31.98	37.37	39.51	41.95	45.24	49.01
1973	8.14	15.85	24.23	31.83	38.70	42.33	53.45	57.96	<u>63.36</u>	63.63	67.27	72.60
1974	5.24	11.04	13.70	17.10	20.88	22.44	25.73	33.74	38.42	39.26	41.40	44.29
1975	10.21	16.57	21.48	31.83	35.80	39.90	53.61	59.01	62.82	67.17	70.06	73.34
1976	6.99	8.49	13.38	15.25	24.14	27.22	30.25	33.72	39.19	45.37	51.09	55.06
1977	3.47	5.28	11.80	12.68	13.28	19.64	23.19	28.41	38.24	40.83	48.97	53.16
1978	7.28	10.56	17.81	22.46	29.19	32.98	40.23	45.13	46.11	46.31	52.32	55.97
1979	7.30	15.08	18.34	26.09	32.31	33.62	41.11	47.41	58.92	59.45	63.92	66.76
1980	6.58	9.54	21.08	30.37	34.87	38.37	44.24	46.77	51.33	56.04	57.56	57.81
1981	1.70	7.02	12.96	15.99	18.72	23.46	27.48	30.01	32.45	34.20	35.05	39.99
1982	4.17	9.78	12.69	18.62	24.01	27.01	34.52	38.94	44.94	47.59	49.93	59.07
1983	4.92	11.76	20.29	28.17	30.44	36.10	37.29	39.82	48.79	52.31	58.21	65.86
1984	5.49	10.50	19.12	25.41	27.91	33.22	45.23	50.99	51.31	52.91	54.54	55.34
1985	4.60	9.06	11.66	12.84	17.28	22.96	26.64	32.22	33.64	41.06	48.97	54.31
1986	5.68	15.95	19.16	19.99	22.25	24.10	26.85	30.97	33.32	35.54	39.94	45.62
1987	8.62	14.14	21.37	21.77	26.23	31.66	37.17	41.35	43.62	43.68	47.70	48.51
1988	5.57	11.97	20.38	23.07	23.35	24.42	29.85	33.83	39.36	41.34	44.62	45.85
1989	1.59	4.33	9.29	12.92	19.93	32.83	44.02	47.08	50.44	57.64	62.35	67.80
1990	5.26	9.83	14.38	17.38	20.60	24.62	28.27	31.18	32.03	33.37	34.30	37.72
1991	<u>13.62</u>	17.06	<u>26.06</u>	31.38	<u>41.41</u>	<u>46.71</u>	<u>57.38</u>	<u>61.27</u>	62.80	63.97	65.57	68.57
1992	8.37	14.66	22.58	25.08	26.49	37.65	46.34	53.06	56.25	58.33	65.73	68.66
1993	12.00	15.38	22.79	24.29	25.89	30.07	36.75	40.64	44.08	46.98	49.25	52.88
1994	8.64	11.17	17.42	21.76	23.58	34.99	45.94	55.02	61.46	69.08	71.61	75.40
1995	5.23	8.36	12.65	17.00	20.90	26.46	29.48	35.64	36.50	44.01	48.13	49.91

YEAR	JAN	FEB	MAR	APR	MAY	JUNE	JULY	AUG	SEP	OCT	NOV	DEC
1996	3.64	9.63	18.10	23.86	25.36	30.79	33.62	47.90	53.22	57.03	59.04	62.69
1997	6.68	11.97	14.60	24.68	30.59	37.00	42.73	47.38	51.16	53.26	60.11	68.55
1998	6.28	14.58	20.69	22.93	24.38	26.73	31.10	33.30	49.61	49.91	51.96	53.94
1999	6.95	9.85	13.46	14.96	21.67	30.66	39.30	43.32	47.65	50.78	54.34	56.84
2000	3.78	8.74	13.22	17.27	17.36	21.36	24.76	31.91	39.11	39.82	44.25	47.46
2001	2.16	2.98	12.98	14.97	17.49	25.73	30.39	38.60	40.50	42.01	43.71	44.49
2002	3.82	6.26	11.77	17.55	19.74	23.19	33.53	36.83	48.66	56.02	63.78	69.77
2003	2.30	9.33	17.51	22.40	25.51	31.62	39.46	45.45	47.84	51.42	54.46	57.58
2004	3.19	10.85	11.75	16.12	17.31	23.97	28.89	30.56	40.57	44.46	49.43	52.68
2005	3.33	5.64	14.69	21.73	23.40	30.87	40.31	52.02	53.64	53.67	56.82	61.63
2006	4.82	8.72	9.63	11.24	16.21	18.20	20.42	25.60	26.51	29.60	33.01	38.44
2007	5.99	8.44	9.54	10.53	12.10	16.07	20.01	24.19	25.46	30.25	32.14	36.17
2008	4.26	13.26	22.37	26.65	28.11	36.75	40.77	50.06	50.80	55.91	59.09	67.32
2009	2.33	5.59	12.70	20.43	29.60	32.38	36.26	39.45	44.67	48.06	50.41	59.98
2010	7.53	11.52	14.93	18.94	24.03	26.95	29.26	30.10	31.43	31.65	37.47	38.10
2011	4.33	8.37	13.37	14.29	15.07	16.73	21.84	23.71	25.97	27.81	29.75	33.50
2012	3.79	11.28	17.22	20.39	21.81	29.16	34.21	48.56	53.73	55.48	56.78	60.88
2013	1.05	13.91	16.90	20.44	21.08	24.80	38.19	51.36	0.00	0.00	0.00	0.00

2013 Deviation from the Average Accumulation

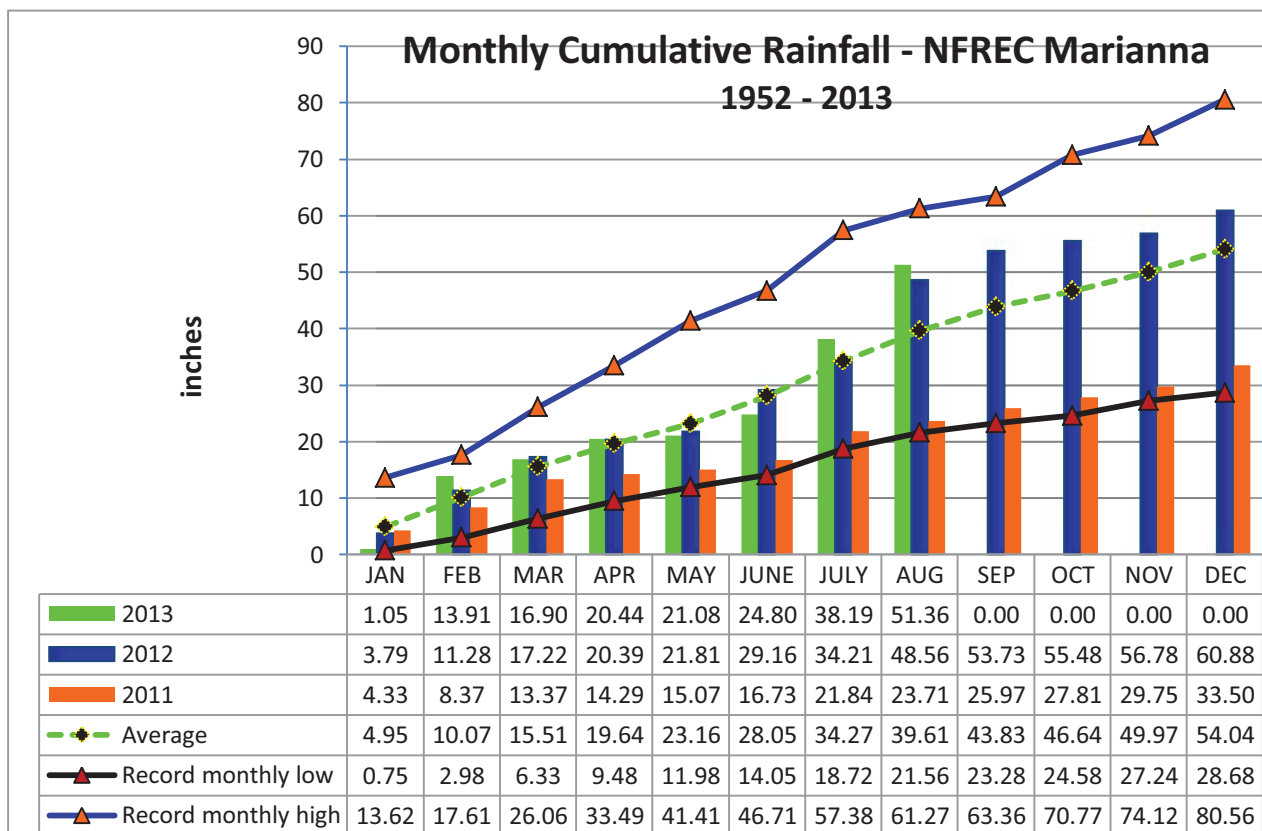
Inches	-3.90	3.84	1.39	0.80	-2.08	-3.25	3.92	11.76				
--------	-------	------	------	------	-------	-------	------	-------	--	--	--	--

Average Accumulation, 1952-2013

Inches	4.95	10.07	15.51	19.64	23.16	28.05	34.27	39.61	43.83	46.64	49.97	54.04
--------	------	-------	-------	-------	-------	-------	-------	-------	-------	-------	-------	-------

Record High/Low Accumulation

LOW	0.75	2.98	6.33	9.48	11.98	14.05	18.72	21.56	23.28	24.58	27.24	28.68
HIGH	13.62	17.61	26.06	33.49	41.41	46.71	57.38	61.27	63.36	70.77	74.12	80.56



2013 FL Panhandle Rainfall Summary

FAWN Station	Jan	Feb	Mar	Apr	May	June	July	Aug	Total
Monticello	1.1	12.3	3.5	6.3	1.7	8.0	12.3	5.9	51.1
Quincy	1.3	13.7	5.5	4.1	0.6	5.0	11.4	4.6	46.1
Carrabelle	1.2	9.8	3.7	4.8	1.4	7.6	18.7	14.0	61.0
Marianna	1.1	12.9	3.0	3.5	0.6	3.7	13.4	13.2	51.4
DeFuniak						7.1	12.8	7.8	
Jay	2.5	10.2	1.4	4.7	0.7	5.8	11.8	5.5	42.6
5 Station Average	1.4	11.8	3.4	4.7	1.0	6.2	13.4	8.5	50.4

FL Panhandle Jan - July Rainfall Totals

