



## Jackson County 2014 Weather Data

*62 Years of Weather Data Recorded at the UF/IFAS Marianna North Florida Research and Education Center*



**Doug Mayo**  
Jackson County Extension Director

1952-2008 Rainfall Data compiled by  
Ed Jowers, Emeritus County Extension Director

Data provided by Florida Automated Weather Station (FAWN)  
UF/IFAS North Florida Research and Education Center  
Greenwood, Florida



<http://fawn.ifas.ufl.edu/station.php?id=130>

Tower Name	Tower Number	Latitude Degree, Minutes	Latitude Degrees Minutes, Seconds	Latitude Degrees Decimal	Longitude Degree, Minutes	Longitude Degrees Minutes, Seconds	Longitude Degrees Decimal	Elevation Feet
Marianna	130.00	N 30°51.000'	N 30°50'00.00"	N 30.85000°	-85°09.910'	-85°09'54.60"	-85.16516°	115'

# 2014 Marianna UF/IFAS FAWN Weather Summary

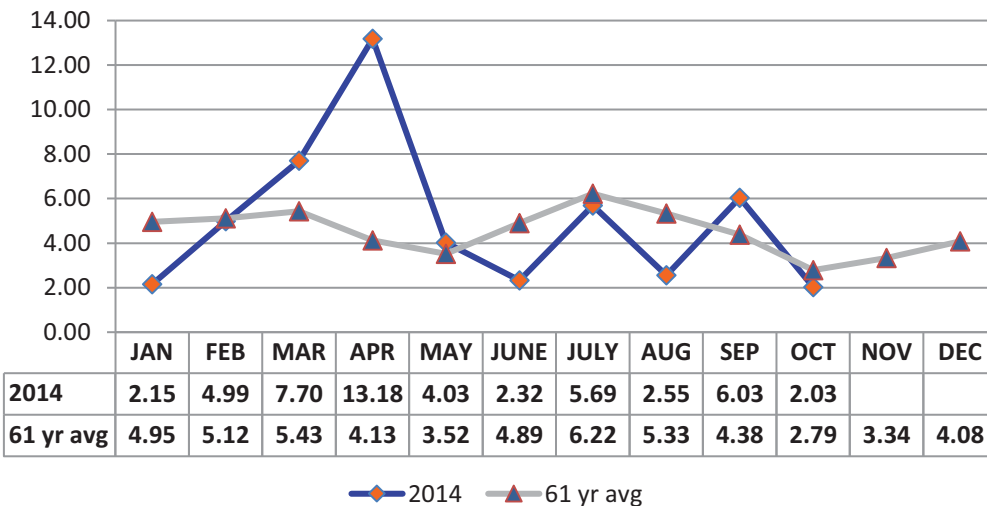
Month	6' Air Temp			Soil Temp			Rainfall Inches	Dev from 61 yr Avg
	High	Low	Avg	High	Low	Avg		
January	69	17	43	53	31	41	2.2	-2.8
February	78	28	53	60	38	49	5.0	-0.1
March	79	32	56	66	41	54	7.7	2.3
April	87	39	66	75	50	62	13.2	9.1
May	94	50	73	87	58	72	4.0	0.5
June	95	67	79	89	70	78	2.3	-2.6
July	96	63	79	90	72	79	5.7	-0.5
August	96	65	80	87	73	80	2.6	-2.8
September	94	57	76	89	64	74	6.0	1.6
October	89	42	67	75	56	64	2.0	-0.8
2014	96	17	67	90	31	65	50.7	3.9

Data: UF/IFAS Florida Automated Weather Network Marianna Station

Total days in 2014 <32° 17

Total days in 2014 >95° 4

## Monthly Rainfall @ Marianna FAWN



# January Daily Weather Data

Date	Temperature						Precipitation			
	Air Temp 6 ft			Soil Temp 4 inch			Rain	Evapo Trans		
	Avg	Min	Max	Avg	Min	Max	Inches	Inches		
1-Jan-14	48	44	52	46	44	47	0.06	0.04		
2-Jan-14	50	35	56	46	43	48	0.29	0.05		
3-Jan-14	32	26	41	40	37	43	0.00	0.03		
4-Jan-14	39	26	47	39	36	42	0.00	0.04		
5-Jan-14	55	42	66	44	41	48	0.00	0.05		
6-Jan-14	36	23	62	43	36	48	0.23	0.06		
7-Jan-14	22	17	29	34	32	37	0.00	0.02		
8-Jan-14	33	19	45	35	31	39	0.00	0.03		
9-Jan-14	47	40	57	40	37	42	0.03	0.04		
10-Jan-14	56	50	64	45	42	47	0.05	0.05		
11-Jan-14	63	52	68	50	48	53	0.41	0.05		
12-Jan-14	50	40	63	47	43	51	0.00	0.04		
13-Jan-14	52	40	64	47	43	50	0.69	0.05		
14-Jan-14	55	40	63	49	46	53	0.02	0.05		
15-Jan-14	43	35	55	45	42	49	0.00	0.04		
16-Jan-14	38	27	49	41	37	45	0.02	0.03		
17-Jan-14	47	33	61	41	37	46	0.00	0.05		
18-Jan-14	39	26	51	39	36	43	0.00	0.04		
19-Jan-14	47	36	59	41	37	46	0.07	0.05		
20-Jan-14	48	31	65	42	37	47	0.00	0.05		
21-Jan-14	48	33	59	43	40	47	0.00	0.05		
22-Jan-14	33	26	44	39	35	43	0.00	0.04		
23-Jan-14	37	27	48	39	36	44	0.00	0.04		
24-Jan-14	35	29	38	39	36	42	0.00	0.03		
25-Jan-14	42	34	53	39	37	42	0.00	0.05		
26-Jan-14	46	32	59	40	36	44	0.00	0.05		
27-Jan-14	57	48	69	45	41	49	0.07	0.06		
28-Jan-14	38	30	53	42	38	47	0.20	0.05		
29-Jan-14	25	22	30	35	32	38	0.00	0.03		
30-Jan-14	32	22	40	35	32	39	0.01	0.04		
31-Jan-14	39	27	55	37	33	42	0.00	0.05		
<b>High</b>			<b>69</b>			<b>53</b>				
<b>Low</b>		<b>17</b>			<b>31</b>					
<b>Average</b>	<b>43</b>	33	54	<b>41</b>	38	45				
Days over 95 <sup>o</sup>	0			<b>Total for Month</b>			<b>2.15</b>	1.35	2.2	1.4
				<b>Number of Rain Days</b>			13.00			
Days below 32 <sup>o</sup>	15			<b>Historic Average</b>			4.95		5.0	
				<b>Deviation from Average</b>			-2.80		-2.8	
				<b>Net Gain/loss (Rain - ET)</b>					<b>0.8</b>	

Year Cumulative  
Rain      ET  
2.2      1.4  
13.0  
5.0  
-2.8  
0.8

## February Daily Weather Data

Date	Temperature						Precipitation					
	Air Temp 6 ft			Soil Temp 4 inch			Rain	Evapo Trans				
	Avg	Min	Max	Avg	Min	Max	Inches	Inches				
1-Feb-14	52	40	64	42	38	47	0.00	0.06				
2-Feb-14	62	53	74	48	44	53	0.01	0.07				
3-Feb-14	62	56	67	51	50	53	0.09	0.05				
4-Feb-14	63	55	76	52	50	56	0.00	0.07				
5-Feb-14	59	39	70	54	48	57	0.01	0.08				
6-Feb-14	37	34	40	45	43	48	0.04	0.04				
7-Feb-14	43	32	56	44	39	50	0.00	0.06				
8-Feb-14	50	43	63	47	44	53	0.16	0.07				
9-Feb-14	52	38	67	48	43	54	0.00	0.07				
10-Feb-14	56	41	70	49	44	54	0.00	0.07				
11-Feb-14	53	43	61	51	49	53	0.08	0.06				
12-Feb-14	40	36	43	44	41	48	1.77	0.04				
13-Feb-14	42	36	55	42	39	46	0.00	0.07				
14-Feb-14	48	32	60	43	38	48	0.00	0.07				
15-Feb-14	47	37	57	45	41	50	0.09	0.07				
16-Feb-14	49	33	66	45	39	52	0.00	0.08				
17-Feb-14	56	39	69	48	43	53	0.00	0.08				
18-Feb-14	63	54	75	52	48	56	0.00	0.08				
19-Feb-14	64	51	77	54	49	60	0.00	0.09				
20-Feb-14	67	58	78	56	53	60	0.00	0.09				
21-Feb-14	61	48	70	57	53	60	0.90	0.09				
22-Feb-14	55	42	68	53	48	58	0.00	0.08				
23-Feb-14	55	46	61	51	49	52	1.04	0.05				
24-Feb-14	63	56	72	55	52	60	0.00	0.09				
25-Feb-14	62	49	75	56	51	60	0.00	0.09				
26-Feb-14	49	40	58	52	47	55	0.80	0.06				
27-Feb-14	41	33	52	47	43	51	0.00	0.07				
28-Feb-14	45	28	61	47	40	53	0.00	0.07				
<b>High</b>			<b>78</b>			<b>60</b>						
<b>Low</b>		<b>28</b>			<b>38</b>							
<b>Average</b>	<b>53</b>	43	65	<b>49</b>	45	54						
Days over 95 <sup>o</sup>	0			<b>Total for Month</b>			<b>4.99</b>	1.97	7.1	3.3		
				<b>Number of Rain Days</b>			11.00			24.0		
Days below 32 <sup>o</sup>	2			<b>59 year Average</b>			5.12					
				<b>Deviation from Average</b>			-0.13			-2.9		
				<b>Net Gain/loss (Rain - ET)</b>						<b>3.02</b>		

**Year Cumulative**  
Rain      ET  
7.1      3.3  
24.0  
10.1  
-2.9  
3.8

## March Daily Weather Data

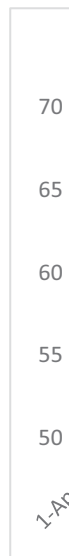
Date	Temperature						Precipitation			
	Air Temp 6 ft			Soil Temp 4 inch			Rain	Evapo Trans		
	Avg	Min	Max	Avg	Min	Max	Inches	Inches		
1-Mar-14	54	40	70	50	44	57	0.00	0.09		
2-Mar-14	59	42	76	52	46	59	0.00	0.1		
3-Mar-14	58	41	72	53	50	56	0.00	0.09		
4-Mar-14	43	39	46	48	47	50	0.00	0.04		
5-Mar-14	46	40	56	48	45	53	0.20	0.07		
6-Mar-14	45	38	49	47	44	49	0.84	0.05		
7-Mar-14	44	38	54	45	42	48	0.01	0.06		
8-Mar-14	52	36	67	48	41	56	0.00	0.09		
9-Mar-14	58	45	72	52	46	58	0.00	0.1		
10-Mar-14	63	47	77	54	48	61	0.00	0.11		
11-Mar-14	63	54	74	56	52	60	0.17	0.09		
12-Mar-14	62	46	73	57	52	61	0.00	0.09		
13-Mar-14	48	37	60	51	47	57	0.00	0.09		
14-Mar-14	52	36	69	51	46	58	0.00	0.09		
15-Mar-14	58	43	69	53	48	56	0.00	0.08		
16-Mar-14	60	57	69	52	52	53	3.69	0.05		
17-Mar-14	59	52	63	53	51	54	0.47	0.06		
18-Mar-14	52	49	58	52	50	55	0.21	0.07		
19-Mar-14	59	51	72	55	50	62	0.00	0.11		
20-Mar-14	61	48	75	57	51	63	0.00	0.11		
21-Mar-14	62	46	75	58	52	64	0.00	0.11		
22-Mar-14	64	54	78	60	55	66	0.00	0.12		
23-Mar-14	62	55	72	59	57	63	0.03	0.09		
24-Mar-14	59	51	65	58	55	62	0.00	0.09		
25-Mar-14	56	44	62	58	54	62	0.00	0.1		
26-Mar-14	46	32	56	54	49	60	0.00	0.08		
27-Mar-14	56	41	68	55	50	60	0.00	0.1		
28-Mar-14	60	58	62	55	54	56	1.57	0.04		
29-Mar-14	63	54	72	57	53	61	0.51	0.11		
30-Mar-14	55	45	69	56	50	62	0.00	0.12		
31-Mar-14	60	41	79	57	50	65	0.00	0.12		
<b>High</b>			<b>79</b>			<b>66</b>				
<b>Low</b>		<b>32</b>			<b>41</b>					
<b>Average</b>	<b>56</b>	45	67	<b>54</b>	49	58				
Days over 95 <sup>o</sup>			0	<b>Total for Month</b>			<b>7.70</b>	2.72	14.8	6.0
Days below 32 <sup>o</sup>			0	<b>Number of Rain Days</b>			10.00		34.0	
				<b>59 year Average</b>			5.43		15.5	
				<b>Deviation from Average</b>			2.27		-0.7	
				<b>Net Gain/loss (Rain - ET)</b>				<b>4.98</b>		8.8

**Year Cumulative**

**Rain**      **ET**  
14.8      6.0  
34.0  
15.5  
-0.7  
8.8

# April Daily Weather Data

Date	Temperature						Precipitation	
	Air Temp 6 ft			Soil Temp 4 inch			Rain	Evapo Trans
	Avg	Min	Max	Avg	Min	Max	Inches	Inches
1-Apr-14	61	43	81	59	53	66	0.00	0.13
2-Apr-14	63	48	81	60	55	66	0.00	0.12
3-Apr-14	69	58	82	61	57	67	0.00	0.14
4-Apr-14	71	62	81	63	59	67	0.00	0.12
5-Apr-14	69	63	78	64	60	67	0.12	0.1
6-Apr-14	67	65	70	62	61	64	0.03	0.06
7-Apr-14	69	63	72	61	60	62	2.54	0.06
8-Apr-14	59	52	67	60	56	65	0.00	0.12
9-Apr-14	58	49	71	59	55	64	0.00	0.13
10-Apr-14	61	45	76	60	54	67	0.00	0.13
11-Apr-14	64	49	77	61	56	66	0.00	0.12
12-Apr-14	68	53	83	63	57	69	0.00	0.14
13-Apr-14	70	59	82	64	59	69	0.00	0.14
14-Apr-14	73	64	81	65	61	68	1.43	0.12
15-Apr-14	56	45	66	59	54	64	1.66	0.08
16-Apr-14	52	39	64	57	50	63	0.00	0.12
17-Apr-14	60	50	70	59	54	64	0.03	0.12
18-Apr-14	56	54	60	56	54	59	3.43	0.05
19-Apr-14	58	53	64	55	53	57	0.01	0.07
20-Apr-14	57	53	63	55	54	57	0.00	0.07
21-Apr-14	64	50	78	59	51	67	0.00	0.14
22-Apr-14	68	55	80	62	56	68	0.00	0.14
23-Apr-14	71	60	83	65	59	71	0.00	0.15
24-Apr-14	72	63	85	67	62	73	0.00	0.15
25-Apr-14	73	65	83	67	63	71	0.00	0.13
26-Apr-14	74	64	85	69	64	75	0.00	0.16
27-Apr-14	73	64	83	69	66	73	0.00	0.13
28-Apr-14	77	66	87	70	66	74	0.00	0.14
29-Apr-14	69	64	74	66	64	70	1.49	0.06
30-Apr-14	67	65	73	62	61	64	2.44	0.06
<b>High</b>			<b>87</b>			<b>75</b>		
<b>Low</b>		<b>39</b>			<b>50</b>			
<b>Average</b>	<b>66</b>	<b>56</b>	<b>76</b>	<b>62</b>	<b>58</b>	<b>67</b>		
Days over 95 <sup>o</sup>			0	<b>Total for Month</b>			<b>13.18</b>	3.40
				<b>Number of Rain Days</b>			10.00	
				<b>59 year Average</b>			4.13	
Days below 32 <sup>o</sup>		0		<b>Deviation from Average</b>			9.05	
				<b>Net Gain/loss (Rain - ET)</b>				<b>9.78</b>



<b>Year Cumulative</b>	
<b>Rain</b>	<b>ET</b>
28.0	9.4
44.0	
19.6	
8.4	
	18.6

## May Daily Weather Data

Date	Temperature						Precipitation			
	Air Temp 6 ft			Soil Temp 4 inch			Rain	Evapo Trans		
	Avg	Min	Max	Avg	Min	Max	Inches	Inches		
1-May-14	59	56	68	61	59	62	1.01	0.07		
2-May-14	62	56	68	61	58	64	0.06	0.09		
3-May-14	66	58	77	64	58	70	0.00	0.15		
4-May-14	71	56	85	66	59	73	0.00	0.17		
5-May-14	73	58	88	69	62	76	0.00	0.17		
6-May-14	71	58	87	70	64	77	0.00	0.17		
7-May-14	73	57	87	71	65	77	0.00	0.16		
8-May-14	76	63	88	72	67	78	0.00	0.17		
9-May-14	76	69	83	72	69	74	0.00	0.13		
10-May-14	74	68	81	70	68	72	0.00	0.09		
11-May-14	75	70	85	71	68	77	0.07	0.13		
12-May-14	76	68	86	72	68	77	0.00	0.14		
13-May-14	77	67	87	73	68	79	0.00	0.17		
14-May-14	76	67	87	74	70	79	0.56	0.15		
15-May-14	63	54	68	69	65	71	0.02	0.1		
16-May-14	64	50	76	67	61	74	0.00	0.15		
17-May-14	69	54	81	70	63	77	0.00	0.16		
18-May-14	73	60	84	72	66	80	0.00	0.17		
19-May-14	73	63	85	73	68	79	0.00	0.16		
20-May-14	75	64	87	74	69	80	0.00	0.16		
21-May-14	76	65	87	75	70	81	0.00	0.17		
22-May-14	77	64	90	76	70	83	0.02	0.19		
23-May-14	79	66	92	77	71	85	0.00	0.19		
24-May-14	80	68	92	78	73	85	0.00	0.18		
25-May-14	79	68	94	78	74	87	1.21	0.18		
26-May-14	75	68	89	75	71	82	0.24	0.16		
27-May-14	75	70	86	74	72	79	0.68	0.12		
28-May-14	78	70	89	75	71	81	0.00	0.17		
29-May-14	74	70	83	74	72	76	0.14	0.11		
30-May-14	74	70	84	73	71	78	0.02	0.12		
31-May-14	77	70	86	74	71	79	0.00	0.13		
<b>High</b>			<b>94</b>			<b>87</b>				
<b>Low</b>		<b>50</b>			<b>58</b>					
<b>Average</b>	<b>73</b>	63	84	<b>72</b>	67	77				
Days over 95 <sup>o</sup>			0	<b>Total for Month</b>			<b>4.03</b>	4.58	32.1	14.0
Days of 100 <sup>o</sup>			0	<b>Number of Rain Days</b>			11.00		55.0	
Days below 32 <sup>o</sup>		0		<b>59 year Average</b>			3.52		23.2	
				<b>Deviation from Average</b>			0.51		8.9	
				<b>Net Gain/loss (Rain - ET)</b>				<b>-0.55</b>		18.0

Year Cumulative

Rain	ET
32.1	14.0
55.0	
23.2	
8.9	
	18.0

# June Daily Weather Data

Date	Temperature						Precipitation			
	Air Temp 6 ft			Soil Temp 4 inch			Rain	Evapo Trans		
	Avg	Min	Max	Avg	Min	Max	Inches	Inches		
1-Jun-14	76	70	85	74	71	78	0.09	0.14		
2-Jun-14	76	69	83	73	70	76	0.00	0.13		
3-Jun-14	76	70	83	74	70	77	0.00	0.13		
4-Jun-14	78	67	87	75	70	80	0.00	0.16		
5-Jun-14	80	69	90	77	71	83	0.00	0.19		
6-Jun-14	80	70	92	79	73	85	0.31	0.19		
7-Jun-14	78	68	88	77	73	82	0.00	0.15		
8-Jun-14	78	70	90	78	75	83	0.03	N/A		
9-Jun-14	81	70	91	78	73	85	0.00	0.19		
10-Jun-14	81	72	91	79	75	84	0.00	0.19		
11-Jun-14	77	71	84	78	75	81	0.00	0.15		
12-Jun-14	80	70	89	78	73	84	0.00	0.18		
13-Jun-14	77	71	85	77	74	80	0.19	N/A		
14-Jun-14	79	69	89	78	72	85	0.00	N/A		
15-Jun-14	79	70	90	79	74	85	0.00	N/A		
16-Jun-14	80	71	93	80	75	88	0.66	N/A		
17-Jun-14	81	71	93	80	74	87	0.00	0.18		
18-Jun-14	82	71	94	81	75	87	0.00	0.2		
19-Jun-14	80	73	93	80	76	87	0.16	0.17		
20-Jun-14	78	71	94	79	74	87	0.01	0.17		
21-Jun-14	81	71	93	79	74	85	0.01	0.17		
22-Jun-14	78	70	91	79	75	85	0.76	0.16		
23-Jun-14	75	70	88	77	73	84	0.01	0.15		
24-Jun-14	78	72	88	77	74	82	0.08	0.15		
25-Jun-14	79	72	89	78	74	83	0.01	0.17		
26-Jun-14	81	74	89	78	75	83	0.00	0.15		
27-Jun-14	82	72	93	80	75	86	0.00	0.19		
28-Jun-14	81	74	92	80	76	85	0.00	0.17		
29-Jun-14	84	74	95	82	76	88	0.00	0.2		
30-Jun-14	84	74	95	83	78	89	0.00	0.19		
<b>High</b>			<b>95</b>			<b>89</b>				
<b>Low</b>		<b>67</b>			<b>70</b>					
<b>Average</b>	<b>79</b>	<b>71</b>	<b>90</b>	<b>78</b>	<b>74</b>	<b>84</b>				
Days over 95 <sup>o</sup>				0		<b>Total for Month</b>		<b>2.32</b>	4.22	Year Cumulative Rain      ET 34.4      18.2 67.0 28.1 6.3 16.1
Days of 100 <sup>o</sup>				0		<b>Number of Rain Days</b>		12.00		
Days below 32 <sup>o</sup>				0		<b>59 year Average</b>		4.89		
						<b>Deviation from Average</b>		-2.57		
						<b>Net Gain/loss (Rain - ET)</b>			<b>-1.9</b>	



## July Daily Weather Data

Date	Temperature						Precipitation	
	Air Temp 6 ft			Soil Temp 4 inch			Rain	Evapo Trans
	Avg	Min	Max	Avg	Min	Max	Inches	Inches
1-Jul-14	85	74	96	83	78	89	0.00	0.2
2-Jul-14	85	75	94	83	79	88	0.00	0.17
3-Jul-14	84	75	94	84	79	90	0.00	0.2
4-Jul-14	79	68	90	83	77	90	0.00	N/A
5-Jul-14	80	66	93	83	77	90	0.00	N/A
6-Jul-14	80	66	93	83	77	89	0.00	N/A
7-Jul-14	82	70	94	83	78	90	0.00	0.19
8-Jul-14	83	72	94	84	78	90	0.00	0.19
9-Jul-14	81	73	93	84	79	90	0.00	0.18
10-Jul-14	78	71	91	82	78	88	0.89	N/A
11-Jul-14	79	71	89	80	76	85	0.00	0.15
12-Jul-14	77	72	91	79	76	86	1.54	0.14
13-Jul-14	79	72	88	78	74	83	0.11	0.15
14-Jul-14	82	73	91	80	75	86	0.00	0.19
15-Jul-14	77	71	85	78	75	80	0.22	0.11
16-Jul-14	77	71	87	77	74	81	0.00	0.14
17-Jul-14	77	66	87	78	73	83	0.00	0.18
18-Jul-14	78	67	88	77	73	82	0.00	0.14
19-Jul-14	76	72	82	75	73	77	0.94	0.08
20-Jul-14	77	72	84	75	73	77	0.06	N/A
21-Jul-14	77	73	81	74	73	77	0.00	0.1
22-Jul-14	79	71	89	77	72	83	0.00	0.17
23-Jul-14	79	71	89	77	74	82	0.92	0.16
24-Jul-14	78	72	86	77	74	79	0.06	0.13
25-Jul-14	78	72	87	77	74	80	0.34	0.14
26-Jul-14	83	77	92	79	75	84	0.00	0.19
27-Jul-14	84	76	93	80	76	85	0.00	0.19
28-Jul-14	82	71	95	80	77	86	0.60	0.18
29-Jul-14	78	69	87	78	75	83	0.01	0.19
30-Jul-14	75	67	85	77	73	83	0.00	0.18
31-Jul-14	76	63	88	78	72	84	0.00	0.17
<b>High</b>			<b>96</b>			<b>90</b>		
<b>Low</b>		<b>63</b>			<b>72</b>			
<b>Average</b>	<b>79</b>	71	90	<b>79</b>	75	85		
				<b>Total for Month</b>			<b>5.69</b>	4.21
Days over 95 <sup>o</sup>				1	<b>Number of Rain Days</b>			11.00
Days of 100 <sup>o</sup>				0	<b>59 year Average</b>			6.22
Days below 32 <sup>o</sup>				0	<b>Deviation from Average</b>			-0.53
<b>Net Gain/loss (Rain - ET)</b>								<b>1.48</b>

<b>Year Cumulative</b>	
<b>Rain</b>	<b>ET</b>
40.1	22.5
78.0	
34.3	
5.8	
	17.6

## August Daily Weather Data

Date	Temperature						Precipitation	
	Air Temp 6 ft			Soil Temp 4 inch			Rain	Evapo Trans
	Avg	Min	Max	Avg	Min	Max	Inches	Inches
1-Aug-14	79	68	89	78	74	83	0.00	0.16
2-Aug-14	79	73	89	79	75	84	0.00	0.15
3-Aug-14	78	72	87	78	75	81	0.00	0.12
4-Aug-14	80	73	88	79	75	82	0.00	0.14
5-Aug-14	82	71	93	80	75	85	0.00	0.18
6-Aug-14	83	74	94	81	76	86	0.00	0.19
7-Aug-14	83	73	95	81	77	86	0.00	0.18
8-Aug-14	82	73	94	81	77	87	0.00	0.17
9-Aug-14	81	74	93	80	77	85	0.00	0.15
10-Aug-14	79	72	90	80	76	86	0.00	0.16
11-Aug-14	80	73	90	80	77	85	1.44	0.14
12-Aug-14	80	74	91	79	75	83	0.10	0.16
13-Aug-14	82	73	92	79	75	84	0.01	0.17
14-Aug-14	82	72	91	80	75	84	0.00	0.17
15-Aug-14	81	72	91	80	76	85	0.00	0.17
16-Aug-14	81	69	92	80	75	86	0.00	0.18
17-Aug-14	78	71	88	79	76	82	0.07	0.12
18-Aug-14	77	71	88	76	74	80	0.19	0.11
19-Aug-14	79	71	91	77	73	83	0.47	0.16
20-Aug-14	79	70	92	77	73	83	0.01	0.14
21-Aug-14	82	73	95	79	74	85	0.00	0.18
22-Aug-14	83	73	96	80	76	86	0.00	0.17
23-Aug-14	85	75	96	81	77	86	0.00	0.18
24-Aug-14	82	75	95	81	77	86	0.01	0.16
25-Aug-14	79	71	88	81	76	87	0.00	0.17
26-Aug-14	79	68	90	80	75	86	0.00	0.16
27-Aug-14	79	69	92	81	76	87	0.00	0.17
28-Aug-14	79	65	92	80	75	87	0.00	0.16
29-Aug-14	77	68	92	78	76	84	0.24	0.12
30-Aug-14	81	73	92	79	74	86	0.01	0.16
31-Aug-14	81	73	94	80	75	87	0.00	0.17
<b>High</b>			<b>96</b>			<b>87</b>		
<b>Low</b>		<b>65</b>			<b>73</b>			
<b>Average</b>	<b>80</b>	<b>72</b>	<b>92</b>	<b>80</b>	<b>75</b>	<b>85</b>		
Days over 95 <sup>o</sup>				3				
Days of 100 <sup>o</sup>				0				
Days below 32 <sup>o</sup>				0				
<b>Total for Month</b>							<b>2.55</b>	4.92
<b>Number of Rain Days</b>							10.00	
<b>59 year Average</b>							5.33	
<b>Deviation from Average</b>							-2.78	
<b>Net Gain/loss (Rain - ET)</b>								<b>-2.37</b>

<b>Year Cumulative</b>	
<b>Rain</b>	<b>ET</b>
42.6	27.4
88.0	
39.6	
3.0	
	15.2

# September Daily Weather Data

Temperature							Precipitation		
Date	Air Temp 6 ft			Soil Temp 4 inch			Rain	Evapo Trans	
	Avg	Min	Max	Avg	Min	Max	Inches	Inches	
1-Sep-14	81	71	94	81	76	88	0.00	0.17	
2-Sep-14	82	71	94	82	76	89	0.31	0.18	
3-Sep-14	77	71	87	78	75	82	0.53	0.11	
4-Sep-14	78	72	91	78	74	84	0.22	0.15	
5-Sep-14	81	71	93	78	73	84	0.01	0.17	
6-Sep-14	77	72	92	77	75	84	0.94	0.13	
7-Sep-14	77	71	91	76	73	82	0.16	0.13	
8-Sep-14	75	72	85	75	73	77	1.56	0.08	
9-Sep-14	79	72	89	76	72	80	0.00	0.14	
10-Sep-14	79	72	88	77	73	81	0.00	0.14	
11-Sep-14	80	72	93	77	73	82	0.00	0.16	
12-Sep-14	81	70	92	78	73	83	0.00	0.16	
13-Sep-14	80	73	92	78	74	82	0.25	0.15	
14-Sep-14	79	71	91	77	73	83	0.20	0.16	
15-Sep-14	78	71	88	77	73	80	0.01	0.12	
16-Sep-14	75	70	86	74	72	78	1.56	0.08	
17-Sep-14	76	69	89	74	71	79	0.04	0.14	
18-Sep-14	77	67	89	74	71	79	0.00	0.14	
19-Sep-14	74	68	84	73	71	76	0.00	0.11	
20-Sep-14	73	68	82	72	70	75	0.00	0.1	
21-Sep-14	74	64	86	72	68	77	0.00	0.14	
22-Sep-14	71	63	88	72	68	78	0.12	0.12	
23-Sep-14	70	64	79	70	68	74	0.01	0.1	
24-Sep-14	67	62	76	69	66	73	0.00	0.1	
25-Sep-14	66	61	71	67	66	68	0.00	0.06	
26-Sep-14	70	57	82	67	64	72	0.00	0.1	
27-Sep-14	72	69	77	68	67	70	0.00	0.07	
28-Sep-14	73	71	76	68	67	69	0.09	0.05	
29-Sep-14	74	71	81	69	67	72	0.02	0.08	
30-Sep-14	72	64	77	68	67	70	0.00	0.07	
<b>High</b>			<b>94</b>			<b>89</b>			
<b>Low</b>		<b>57</b>			<b>64</b>				
<b>Average</b>	<b>76</b>	69	86	<b>74</b>	71	78			
Days over 95 <sup>o</sup>				0					
Days of 100 <sup>o</sup>				0					
Days below 32 <sup>o</sup>				0					
<b>Total for Month</b>							<b>6.03</b>	3.61	
<b>Number of Rain Days</b>							16.00		
<b>59 year Average</b>							4.38		
<b>Deviation from Average</b>							1.65		
<b>Net Gain/loss (Rain - ET)</b>								<b>2.42</b>	

<b>Year Cumulative</b>	
<b>Rain</b>	<b>ET</b>
48.6	31.0
104.0	
44.0	
4.7	
	17.7

# October Daily Weather Data

Date	Temperature						Precipitation	
	Air Temp 6 ft			Soil Temp 4 inch			Rain	Evapo Trans
	Avg	Min	Max	Avg	Min	Max	Inches	Inches
1-Oct-14	72	62	83	68	64	71	0.00	0.09
2-Oct-14	76	67	87	69	66	73	0.00	0.11
3-Oct-14	75	68	83	69	68	71	0.24	0.09
4-Oct-14	64	49	72	66	62	70	0.00	0.1
5-Oct-14	58	44	73	63	59	69	0.00	0.09
6-Oct-14	64	47	80	64	59	69	0.00	0.1
7-Oct-14	70	55	86	65	61	71	0.00	0.11
8-Oct-14	73	64	87	68	64	73	0.00	0.11
9-Oct-14	75	61	89	69	64	74	0.00	0.12
10-Oct-14	75	63	89	69	66	74	0.00	0.11
11-Oct-14	74	64	89	70	66	74	0.00	0.11
12-Oct-14	75	63	88	70	66	75	0.00	0.11
13-Oct-14	75	68	84	69	67	71	0.64	0.08
14-Oct-14	71	59	76	66	64	68	1.06	0.07
15-Oct-14	63	53	77	63	61	67	0.02	0.09
16-Oct-14	62	51	76	61	58	65	0.00	0.09
17-Oct-14	63	48	81	61	57	66	0.00	0.09
18-Oct-14	68	53	82	62	58	67	0.00	0.1
19-Oct-14	62	51	75	62	59	66	0.00	0.09
20-Oct-14	64	49	80	61	58	66	0.00	0.09
21-Oct-14	64	52	80	62	58	66	0.00	0.09
22-Oct-14	61	49	76	61	58	65	0.00	0.08
23-Oct-14	58	44	74	60	56	64	0.00	0.08
24-Oct-14	60	48	76	60	57	64	0.00	0.08
25-Oct-14	60	45	78	59	56	63	0.00	0.08
26-Oct-14	66	51	83	60	56	65	0.00	0.09
27-Oct-14	69	56	86	62	58	66	0.00	0.09
28-Oct-14	69	55	83	62	59	66	0.00	0.09
29-Oct-14	70	62	82	63	61	66	0.00	0.08
30-Oct-14	62	46	72	63	59	66	0.00	0.07
31-Oct-14	57	42	72	59	56	63	0.07	0.07
<b>High</b>			<b>89</b>			<b>75</b>		
<b>Low</b>		<b>42</b>			<b>56</b>			
<b>Average</b>	<b>67</b>	<b>54</b>	<b>81</b>	<b>64</b>	<b>61</b>	<b>68</b>		
Days over 95 <sup>o</sup>	0			<b>Total for Month</b>			<b>2.03</b>	2.85
				<b>Number of Rain Days</b>			5.00	
Days below 32 <sup>o</sup>	0			<b>59 year Average</b>			2.79	
				<b>Deviation from Average</b>			-0.76	
				<b>Net Gain/loss (Rain - ET)</b>				<b>-0.82</b>

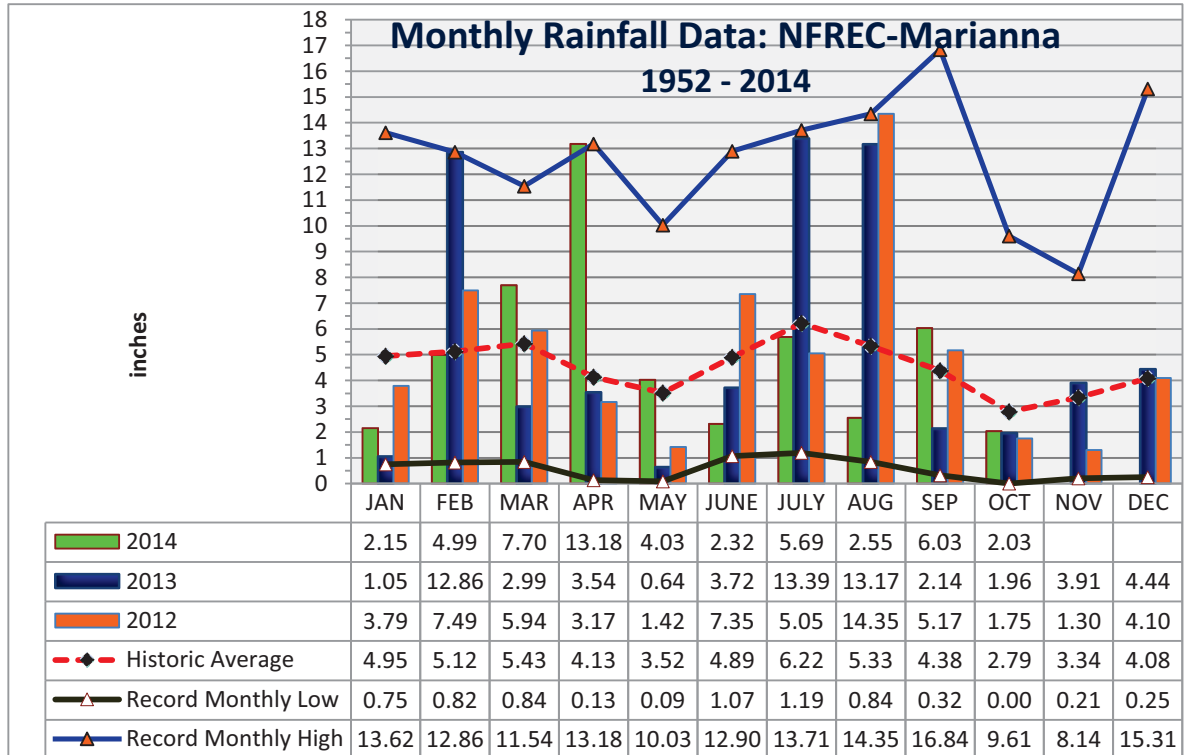
<b>Year Cumulative</b>	
<b>Rain</b>	<b>ET</b>
50.7	33.8
109.0	
46.8	
3.9	
	16.8

**Jackson County**  
**Monthly Total Rainfall, 1952 - 2012**  
No FL Research & Education Cntr, Marianna, FL



YEAR	JAN	FEB	MAR	APR	MAY	JUNE	JULY	AUG	SEP	OCT	NOV	DEC	TOTAL
1952	1.14	8.88	4.48	2.11	5.13	1.12	5.95	8.81	3.09	0.65	3.26	3.42	48.04
1953	4.84	7.26	3.03	8.43	2.43	3.97	6.84	1.63	6.33	0.65	4.09	<u>15.31</u>	64.81
1954	1.33	3.49	2.62	2.58	1.96	3.46	3.28	2.84	1.72	1.30	2.66	1.44	<b>28.68</b>
1955	3.66	1.83	<b>0.84</b>	5.80	3.03	1.62	6.75	3.75	2.44	2.10	0.72	0.77	33.31
1956	3.59	5.18	3.77	2.04	4.03	5.45	8.52	4.09	6.44	5.08	0.28	3.34	51.81
1957	<b>0.75</b>	2.65	5.17	5.74	4.60	5.75	9.83	5.91	<u>16.84</u>	1.31	6.24	2.22	67.01
1958	4.48	3.61	4.73	7.22	5.57	6.00	8.39	3.45	3.68	1.88	1.75	2.32	53.08
1959	3.67	7.06	8.50	5.73	6.95	3.77	4.83	3.67	3.07	7.93	<b>0.21</b>	1.53	56.92
1960	3.36	7.08	3.41	6.80	3.20	4.75	4.97	4.80	6.22	2.00	0.47	2.35	49.41
1961	4.23	4.15	3.64	5.57	3.97	4.41	3.99	11.09	2.60	<b>0.00</b>	2.84	6.23	52.72
1962	1.72	2.80	8.13	3.28	2.86	3.67	7.97	6.07	3.07	2.82	5.16	1.67	49.22
1963	7.31	3.02	3.18	1.36	3.50	7.99	5.16	<i>1.50</i>	5.25	0.01	4.22	6.05	48.55
1964	10.80	6.81	6.41	9.47	2.23	5.68	9.22	3.07	7.47	<u>9.61</u>	3.35	6.44	<u>80.56</u>
1965	2.63	6.09	5.51	3.96	0.18	9.60	3.26	4.18	4.48	3.41	1.81	3.60	48.71
1966	5.56	9.84	2.57	0.77	5.80	3.13	3.25	9.82	5.09	1.41	2.03	4.62	53.89
1967	8.27	3.32	2.19	<b>0.13</b>	2.61	7.02	6.49	3.58	1.40	1.86	2.40	7.98	47.25
1968	1.28	2.30	3.40	2.50	3.39	1.18	5.45	4.61	2.99	1.41	5.11	5.34	38.96
1969	1.68	3.49	7.08	4.54	3.01	1.71	13.18	3.05	5.64	1.50	1.22	3.80	49.90
1970	4.16	9.20	8.86	1.83	1.81	3.69	5.04	8.01	0.49	4.40	2.21	3.13	52.83
1971	1.97	6.11	7.15	3.17	3.03	3.85	5.20	6.76	2.47	1.84	1.94	3.70	47.19
1972	3.62	6.03	6.41	0.38	2.87	8.89	3.78	5.39	2.14	2.44	3.29	3.77	49.01
1973	8.14	7.71	8.38	7.60	6.87	3.63	11.12	4.51	5.40	0.27	3.64	5.33	72.60
1974	5.24	5.80	2.66	3.40	3.78	1.56	3.29	8.01	4.68	0.84	2.14	2.89	44.29
1975	10.21	6.36	4.91	10.35	3.97	4.10	<u>13.71</u>	5.40	3.81	4.35	2.89	3.28	73.34
1976	6.99	1.50	4.89	1.87	8.89	3.08	3.03	3.47	5.47	6.18	5.72	3.97	55.06
1977	3.47	1.81	6.52	0.88	0.60	6.36	3.55	5.22	9.83	2.59	<u>8.14</u>	4.19	53.16
1978	7.28	3.28	7.25	4.65	6.73	3.79	7.25	4.90	0.98	0.20	6.01	3.65	55.97
1979	7.30	7.78	3.26	7.75	6.22	1.31	7.49	6.30	11.51	0.53	4.47	2.84	66.76
1980	6.58	2.96	<u>11.54</u>	9.29	4.50	3.50	5.87	2.53	4.56	4.71	1.52	<b>0.25</b>	57.81
1981	1.70	5.32	5.94	3.03	2.73	4.74	4.02	2.53	2.44	1.75	0.85	4.94	39.99
1982	4.17	5.61	2.91	5.93	5.39	3.00	7.51	4.42	6.00	2.65	2.34	9.14	59.07
1983	4.92	6.84	8.53	7.88	2.27	5.66	<b>1.19</b>	2.53	8.97	3.52	5.90	7.65	65.86
1984	5.49	5.01	8.62	6.29	2.50	5.31	12.01	5.76	<b>0.32</b>	1.60	1.63	0.80	55.34
1985	4.60	4.46	2.60	1.18	4.44	5.68	3.68	5.58	1.42	7.42	7.91	5.34	54.31
1986	5.68	10.27	3.21	0.83	2.26	1.85	2.75	4.12	2.35	2.22	4.40	5.68	45.62
1987	8.62	5.52	7.23	0.40	4.46	5.43	5.51	4.18	2.27	0.06	4.02	0.81	48.51
1988	5.57	6.40	8.41	2.69	0.28	<b>1.07</b>	5.43	3.98	5.53	1.98	3.28	1.23	45.85
1989	1.59	2.74	4.96	3.63	7.01	<u>12.90</u>	11.19	3.06	3.36	7.20	4.71	5.45	67.80
1990	5.26	4.57	4.55	3.00	3.22	4.02	3.65	2.91	0.85	1.34	0.93	3.42	37.72
1991	<u>13.62</u>	3.44	9.00	5.32	<u>10.03</u>	5.30	10.67	3.89	1.53	1.17	1.60	3.00	68.57
1992	8.37	6.29	7.92	2.50	1.41	11.16	8.69	6.72	3.19	2.08	7.40	2.93	68.66
1993	12.00	3.38	7.41	1.50	1.60	4.18	6.68	3.89	3.44	2.90	2.27	3.63	52.88
1994	8.64	2.53	6.25	4.34	1.82	11.41	10.95	9.08	6.44	7.62	2.53	3.79	75.40
1995	5.23	3.13	4.29	4.35	3.90	5.56	3.02	6.16	0.86	7.51	4.12	1.78	49.91

YEAR	JAN	FEB	MAR	APR	MAY	JUNE	JULY	AUG	SEP	OCT	NOV	DEC	TOTAL
1996	3.64	5.99	8.47	5.76	1.50	5.43	2.83	14.28	5.32	3.81	2.01	3.65	62.69
1997	6.68	5.29	2.63	10.08	5.91	6.41	5.73	4.65	3.78	2.10	6.85	8.44	68.55
1998	6.28	8.30	6.11	2.24	1.45	2.35	4.37	2.20	16.31	0.30	2.05	1.98	53.94
1999	6.95	2.90	3.61	1.50	6.71	8.99	8.64	4.02	4.33	3.13	3.56	2.50	56.84
2000	3.78	4.96	4.48	4.05	0.09	4.00	3.40	7.15	7.20	0.71	4.43	3.21	47.46
2001	2.16	0.82	10.00	1.99	2.52	8.24	4.66	8.21	1.90	1.51	1.70	0.78	44.49
2002	3.82	2.44	5.51	5.78	2.19	3.45	10.34	3.30	11.83	7.36	7.76	5.99	69.77
2003	2.30	7.03	8.18	4.89	3.11	6.11	7.84	5.99	2.39	3.58	3.04	3.12	57.58
2004	3.19	7.66	0.90	4.37	1.19	6.66	4.92	1.67	10.01	3.89	4.97	3.25	52.68
2005	3.33	2.31	9.05	7.04	1.67	7.47	9.44	11.71	1.62	0.03	3.15	4.81	61.63
2006	4.82	3.90	0.91	1.61	4.97	1.99	2.22	5.18	0.91	3.09	3.41	5.43	38.44
2007	5.99	2.45	1.10	0.99	1.57	3.97	3.94	4.18	1.27	4.79	1.89	4.03	36.17
2008	4.26	9.00	9.11	4.28	1.46	8.64	4.02	9.29	0.74	5.11	3.18	8.23	67.32
2009	2.33	3.26	7.11	7.73	9.17	2.78	3.88	3.19	5.22	3.39	2.35	9.57	59.98
2010	7.53	3.99	3.41	4.01	5.09	2.92	2.31	0.84	1.33	0.22	5.82	0.63	38.10
2011	4.33	4.04	5.00	0.92	0.78	1.66	5.11	1.87	2.26	1.84	1.94	3.75	33.50
2012	3.79	7.49	5.94	3.17	1.42	7.35	5.05	14.35	5.17	1.75	1.30	4.10	60.88
2013	1.05	12.86	2.99	3.54	0.64	3.72	13.39	13.17	2.14	1.96	3.91	4.44	63.81
<b>2014</b>	<b>2.15</b>	<b>4.99</b>	<b>7.70</b>	<b>13.18</b>	<b>4.03</b>	<b>2.32</b>	<b>5.69</b>	<b>2.55</b>	<b>6.03</b>	<b>2.03</b>			<b>50.67</b>
<b>Deviation from the Average Monthly Rainfall</b>													
Inches	-2.80	-0.13	2.27	9.05	0.51	-2.57	-0.53	-2.78	1.65	-0.76			3.89
<b>Monthly Average Rainfall, 1952-2013</b>													
AVG.	4.95	5.12	5.43	4.13	3.52	4.89	6.22	5.33	4.38	2.79	3.34	4.08	54.20
<b>% of Annual Rainfall Occuring each Month</b>													
	9.1%	9.5%	10.0%	7.6%	6.5%	9.0%	11.5%	9.8%	8.1%	5.1%	6.2%	7.5%	
<b>Record High/Low for the Month</b>													
<b>LOW</b>	0.75	0.82	0.84	0.13	0.09	1.07	1.19	0.84	0.32	0.00	0.21	0.25	28.68
<b>HIGH</b>	13.62	12.86	11.54	13.18	10.03	12.90	13.71	14.35	16.84	9.61	8.14	15.31	80.56



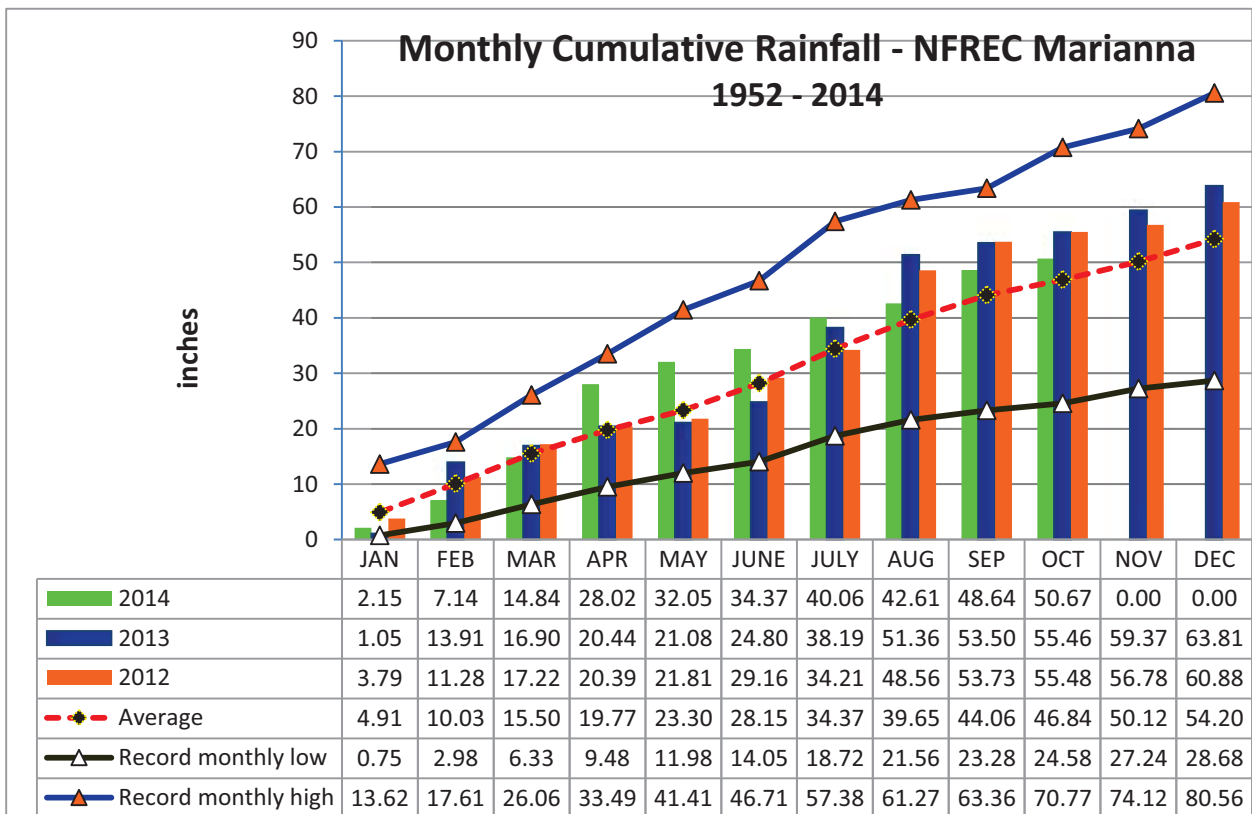
## Jackson County Monthly Cumulative Rainfall, 1952 -2012

North Florida Research & Education Center Marianna, FL



YEAR	JAN	FEB	MAR	APR	MAY	JUNE	JULY	AUG	SEP	OCT	NOV	DEC
1952	1.14	10.02	14.50	16.61	21.74	22.86	28.81	37.62	40.71	41.36	44.62	48.04
1953	4.84	12.10	15.13	23.56	25.99	29.96	36.80	38.43	44.76	45.41	49.50	64.81
1954	1.33	4.82	7.44	10.02	<b>11.98</b>	15.44	<b>18.72</b>	<b>21.56</b>	<b>23.28</b>	<b>24.58</b>	<b>27.24</b>	<b>28.68</b>
1955	3.66	5.49	<b>6.33</b>	12.13	15.16	16.78	23.53	27.28	29.72	31.82	32.54	33.31
1956	3.59	8.77	12.54	14.58	18.61	24.06	32.58	36.67	43.11	48.19	48.47	51.81
1957	<b>0.75</b>	3.40	8.57	14.31	18.91	24.66	34.49	40.40	57.24	58.55	64.79	67.01
1958	4.48	8.09	12.82	20.04	25.61	31.61	40.00	43.45	47.13	49.01	50.76	53.08
1959	3.67	10.73	19.23	24.96	31.91	35.68	40.51	44.18	47.25	55.18	55.39	56.92
1960	3.36	10.44	13.85	20.65	23.85	28.60	33.57	38.37	44.59	46.59	47.06	49.41
1961	4.23	8.38	12.02	17.59	21.56	25.97	29.96	41.05	43.65	43.65	46.49	52.72
1962	1.72	4.52	12.65	15.93	18.79	22.46	30.43	36.50	39.57	42.39	47.55	49.22
1963	7.31	10.33	13.51	14.87	18.37	26.36	31.52	33.02	38.27	38.28	42.50	48.55
1964	10.80	<u>17.61</u>	24.02	<u>33.49</u>	35.72	41.40	50.62	53.69	61.16	<u>70.77</u>	<u>74.12</u>	<u>80.56</u>
1965	2.63	8.72	14.23	18.19	18.37	27.97	31.23	35.41	39.89	43.30	45.11	48.71
1966	5.56	15.40	17.97	18.74	24.54	27.67	30.92	40.74	45.83	47.24	49.27	53.89
1967	8.27	11.59	13.78	13.91	16.52	23.54	30.03	33.61	35.01	36.87	39.27	47.25
1968	1.28	3.58	6.98	<b>9.48</b>	12.87	<b>14.05</b>	19.50	24.11	27.10	28.51	33.62	38.96
1969	1.68	5.17	12.25	16.79	19.80	21.51	34.69	37.74	43.38	44.88	46.10	49.90
1970	4.16	13.36	22.22	24.05	25.86	29.55	34.59	42.60	43.09	47.49	49.70	52.83
1971	1.97	8.08	15.23	18.40	21.43	25.28	30.48	37.24	39.71	41.55	43.49	47.19
1972	3.62	9.65	16.06	16.44	19.31	28.20	31.98	37.37	39.51	41.95	45.24	49.01
1973	8.14	15.85	24.23	31.83	38.70	42.33	53.45	57.96	<u>63.36</u>	63.63	67.27	72.60
1974	5.24	11.04	13.70	17.10	20.88	22.44	25.73	33.74	38.42	39.26	41.40	44.29
1975	10.21	16.57	21.48	31.83	35.80	39.90	53.61	59.01	62.82	67.17	70.06	73.34
1976	6.99	8.49	13.38	15.25	24.14	27.22	30.25	33.72	39.19	45.37	51.09	55.06
1977	3.47	5.28	11.80	12.68	13.28	19.64	23.19	28.41	38.24	40.83	48.97	53.16
1978	7.28	10.56	17.81	22.46	29.19	32.98	40.23	45.13	46.11	46.31	52.32	55.97
1979	7.30	15.08	18.34	26.09	32.31	33.62	41.11	47.41	58.92	59.45	63.92	66.76
1980	6.58	9.54	21.08	30.37	34.87	38.37	44.24	46.77	51.33	56.04	57.56	57.81
1981	1.70	7.02	12.96	15.99	18.72	23.46	27.48	30.01	32.45	34.20	35.05	39.99
1982	4.17	9.78	12.69	18.62	24.01	27.01	34.52	38.94	44.94	47.59	49.93	59.07
1983	4.92	11.76	20.29	28.17	30.44	36.10	37.29	39.82	48.79	52.31	58.21	65.86
1984	5.49	10.50	19.12	25.41	27.91	33.22	45.23	50.99	51.31	52.91	54.54	55.34
1985	4.60	9.06	11.66	12.84	17.28	22.96	26.64	32.22	33.64	41.06	48.97	54.31
1986	5.68	15.95	19.16	19.99	22.25	24.10	26.85	30.97	33.32	35.54	39.94	45.62
1987	8.62	14.14	21.37	21.77	26.23	31.66	37.17	41.35	43.62	43.68	47.70	48.51
1988	5.57	11.97	20.38	23.07	23.35	24.42	29.85	33.83	39.36	41.34	44.62	45.85
1989	1.59	4.33	9.29	12.92	19.93	32.83	44.02	47.08	50.44	57.64	62.35	67.80
1990	5.26	9.83	14.38	17.38	20.60	24.62	28.27	31.18	32.03	33.37	34.30	37.72
1991	<u>13.62</u>	17.06	<u>26.06</u>	31.38	<u>41.41</u>	<u>46.71</u>	<u>57.38</u>	<u>61.27</u>	62.80	63.97	65.57	68.57
1992	8.37	14.66	22.58	25.08	26.49	37.65	46.34	53.06	56.25	58.33	65.73	68.66
1993	12.00	15.38	22.79	24.29	25.89	30.07	36.75	40.64	44.08	46.98	49.25	52.88
1994	8.64	11.17	17.42	21.76	23.58	34.99	45.94	55.02	61.46	69.08	71.61	75.40
1995	5.23	8.36	12.65	17.00	20.90	26.46	29.48	35.64	36.50	44.01	48.13	49.91

YEAR	JAN	FEB	MAR	APR	MAY	JUNE	JULY	AUG	SEP	OCT	NOV	DEC
1996	3.64	9.63	18.10	23.86	25.36	30.79	33.62	47.90	53.22	57.03	59.04	62.69
1997	6.68	11.97	14.60	24.68	30.59	37.00	42.73	47.38	51.16	53.26	60.11	68.55
1998	6.28	14.58	20.69	22.93	24.38	26.73	31.10	33.30	49.61	49.91	51.96	53.94
1999	6.95	9.85	13.46	14.96	21.67	30.66	39.30	43.32	47.65	50.78	54.34	56.84
2000	3.78	8.74	13.22	17.27	17.36	21.36	24.76	31.91	39.11	39.82	44.25	47.46
2001	2.16	2.98	12.98	14.97	17.49	25.73	30.39	38.60	40.50	42.01	43.71	44.49
2002	3.82	6.26	11.77	17.55	19.74	23.19	33.53	36.83	48.66	56.02	63.78	69.77
2003	2.30	9.33	17.51	22.40	25.51	31.62	39.46	45.45	47.84	51.42	54.46	57.58
2004	3.19	10.85	11.75	16.12	17.31	23.97	28.89	30.56	40.57	44.46	49.43	52.68
2005	3.33	5.64	14.69	21.73	23.40	30.87	40.31	52.02	53.64	53.67	56.82	61.63
2006	4.82	8.72	9.63	11.24	16.21	18.20	20.42	25.60	26.51	29.60	33.01	38.44
2007	5.99	8.44	9.54	10.53	12.10	16.07	20.01	24.19	25.46	30.25	32.14	36.17
2008	4.26	13.26	22.37	26.65	28.11	36.75	40.77	50.06	50.80	55.91	59.09	67.32
2009	2.33	5.59	12.70	20.43	29.60	32.38	36.26	39.45	44.67	48.06	50.41	59.98
2010	7.53	11.52	14.93	18.94	24.03	26.95	29.26	30.10	31.43	31.65	37.47	38.10
2011	4.33	8.37	13.37	14.29	15.07	16.73	21.84	23.71	25.97	27.81	29.75	33.50
2012	3.79	11.28	17.22	20.39	21.81	29.16	34.21	48.56	53.73	55.48	56.78	60.88
2013	1.05	13.91	16.90	20.44	21.08	24.80	38.19	51.36	53.50	55.46	59.37	63.81
2014	2.15	7.14	14.84	28.02	32.05	34.37	40.06	42.61	48.64	50.67		
<b>2013 Deviation from the Average Accumulation</b>												
Inches	-2.76	-2.89	-0.66	8.25	8.75	6.22	5.69	2.96	4.58	3.83		
<b>Average Accumulation, 1952-2013</b>												
Inches	4.91	10.03	15.50	19.77	23.30	28.15	34.37	39.65	44.06	46.84	50.12	54.20
<b>Record High/Low Accumulation</b>												
<b>LOW</b>	0.75	2.98	6.33	9.48	11.98	14.05	18.72	21.56	23.28	24.58	27.24	28.68
<b>HIGH</b>	13.62	17.61	26.06	33.49	41.41	46.71	57.38	61.27	63.36	70.77	74.12	80.56





## 2014 Panhandle FAWN Weather Station Summary

FAWN Station	Data	Jan	Feb	Mar	Apr	May	June	July	Aug	Sept	Oct	Total
Monticello	Rain	4.3	4.4	4.2	11.9	3.8	2.7	6.8	2.4	5.4	3.0	48.9
	Hist Avg	4.5	4.6	6.1	4.1	3.4	5.7	7.0	6.9	5.4	3.6	51.3
	Deviation	-0.2	-0.2	-1.9	7.8	0.4	-3.0	-0.2	-4.6	0.0	-0.6	-2.4
Quincy	Rain	4.0	5.4	9.3	13.0	3.3	4.0	4.8	3.5	4.4	3.2	54.8
	Hist Avg	5.0	4.3	5.6	3.7	4.2	5.2	6.3	6.2	4.1	3.4	48.0
	Deviation	-1.0	1.1	3.7	9.3	-0.9	-1.3	-1.5	-2.7	0.3	-0.2	6.8
Carrabelle	Rain	6.1	6.7	6.7	7.1	2.3	7.7	3.9	5.1	7.5	2.3	55.4
	Hist Avg	3.8	3.7	4.9	3.0	2.7	5.3	7.3	7.9	7.3	3.7	49.6
	Deviation	2.3	3.0	1.8	4.1	-0.4	2.4	-3.4	-2.8	0.2	-1.4	5.8
Marianna	Rain	2.2	5.0	7.7	13.2	4.0	2.3	5.7	2.6	6.0	2.0	50.7
	Hist Avg	5.0	5.1	5.4	4.1	3.5	4.9	6.2	5.3	4.4	2.8	46.8
	Deviation	-2.8	-0.1	2.3	9.1	0.5	-2.6	-0.5	-2.8	1.6	-0.8	4.0
DeFuniak	Rain	3.3	5.2	7.7	19.1	8.4	5.7	9.7	2.1	4.1	5.6	70.8
Jay	Rain	3.4	5.1	7.6	16.7	10.3	5.3	8.7	4.9	4.1	4.1	70.1
	Hist Avg	5.5	5.3	6.6	4.8	4.8	5.8	7.0	6.2	5.5	3.3	54.8
	Deviation	-2.1	-0.2	1.0	11.9	5.5	-0.5	1.7	-1.3	-1.4	0.8	15.3
6 Station Average		3.9	5.3	7.2	13.5	5.4	4.6	6.6	3.4	5.3	3.4	58.5

### FAWN 2014 Jan-Oct Rainfall Totals

