



Jackson County 2015 Weather Data

62 Years of Weather Data Recorded at the UF/IFAS Marianna North Florida Research and Education Center



Doug Mayo
Jackson County Extension Director

1952-2008 Rainfall Data compiled by
Ed Jowers, Emeritus County Extension Director

Data provided by Florida Automated Weather Station (FAWN)
UF/IFAS North Florida Research and Education Center
Greenwood, Florida



<http://fawn.ifas.ufl.edu/station.php?id=130>

Tower Name	Tower Number	Latitude Degree, Minutes	Latitude Degrees Minutes, Seconds	Latitude Degrees Decimal	Longitude Degree, Minutes	Longitude Degrees Minutes, Seconds	Longitude Degrees Decimal	Elevation Feet
Marianna	130.00	N 30°51.000'	N 30°50'00.00"	N 30.85000°	-85°09.910'	-85°09'54.60"	-85.16516°	115'

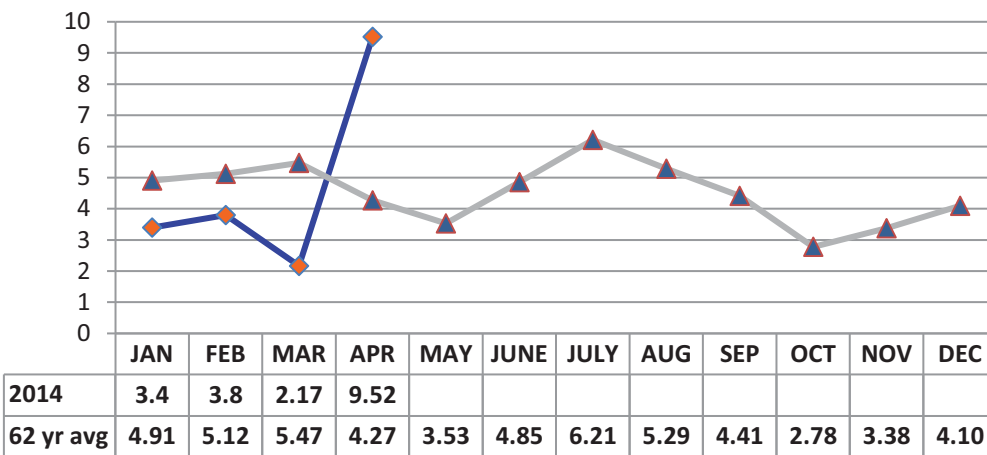
2015 Marianna UF/IFAS FAWN Weather Summary

Month	6' Air Temp			Soil Temp			Rainfall Inches	Dev from 61 yr Avg
	High	Low	Avg	High	Low	Avg		
January	75	19	49	54	33	43	3.4	-1.5
February	74	24	48	51	32	42	3.8	-1.3
March	84	33	63	68	40	55	2.2	-3.3
April	88	49	70	75	56	65	9.5	5.2
2015	88	19	58	75	32	52	18.9	-0.9

Data: UF/IFAS Florida Automated Weather Network Marianna Station

Total days in 2015 <32° 13 Total days in 2015 >95° 0

Monthly Rainfall @ Marianna FAWN



—◆— 2014 —▲— 62 yr avg

January Daily Weather Data

Temperature							Precipitation		
Date	Air Temp 6 ft			Soil Temp 4 inch			Rain	Evapo Trans	
	Avg	Min	Max	Avg	Min	Max	Inches	Inches	
1-Jan-15	49	40	59	46	43	48	0.00	0.04	
2-Jan-15	57	50	62	47	45	49	0.00	0.05	
3-Jan-15	67	60	75	51	49	54	0.00	0.06	
4-Jan-15	63	51	71	52	49	53	1.48	0.06	
5-Jan-15	48	40	56	47	45	50	0.00	0.04	
6-Jan-15	46	34	61	44	41	48	0.00	0.04	
7-Jan-15	44	29	57	42	39	46	0.00	0.04	
8-Jan-15	27	19	38	37	34	40	0.00	0.02	
9-Jan-15	34	24	40	35	33	37	0.00	0.03	
10-Jan-15	41	32	51	37	34	41	0.00	0.03	
11-Jan-15	51	38	62	40	36	43	0.00	0.05	
12-Jan-15	54	50	61	43	42	46	0.00	0.04	
13-Jan-15	55	52	60	45	44	47	0.00	0.04	
14-Jan-15	51	46	54	45	44	46	0.00	0.04	
15-Jan-15	45	43	46	43	42	44	0.28	0.03	
16-Jan-15	45	38	57	42	39	45	0.00	0.04	
17-Jan-15	45	33	61	41	38	44	0.00	0.05	
18-Jan-15	49	37	65	41	38	45	0.00	0.05	
19-Jan-15	49	31	70	41	37	46	0.00	0.05	
20-Jan-15	53	38	69	42	38	47	0.00	0.05	
21-Jan-15	56	44	72	45	42	50	0.00	0.06	
22-Jan-15	56	48	65	45	43	48	0.00	0.05	
23-Jan-15	57	50	62	46	44	47	1.64	0.05	
24-Jan-15	47	37	55	45	41	47	0.00	0.05	
25-Jan-15	49	32	63	42	38	46	0.00	0.06	
26-Jan-15	48	38	54	42	40	44	0.00	0.05	
27-Jan-15	48	35	62	41	37	45	0.00	0.06	
28-Jan-15	43	35	56	41	37	45	0.00	0.05	
29-Jan-15	50	33	67	42	37	46	0.00	0.06	
30-Jan-15	52	45	59	43	41	47	0.00	0.06	
31-Jan-15	46	32	62	42	38	46	0.00	0.06	
High			75			54			
Low		19			33				
Average	49	39	60	43	40	46			
Days over 95 ^o	0			Total for Month		3.40	1.46	3.4	1.5
				Number of Rain Days		3.00		3.0	
Days below 32 ^o	5			Historic Average		4.91		4.9	
				Deviation from Average		-1.51		-1.5	
				Net Gain/loss (Rain - ET)			1.94		1.9

Year Cumulative
Rain ET

March Daily Weather Data

Temperature							Precipitation	
Date	Air Temp 6 ft			Soil Temp 4 inch			Rain	Evapo Trans
	Avg	Min	Max	Avg	Min	Max	Inches	Inches
1-Mar-15	49	45	56	42	40	45	0.00	0.05
2-Mar-15	58	50	69	46	43	49	0.00	0.07
3-Mar-15	67	54	81	50	45	56	0.00	0.1
4-Mar-15	69	61	80	53	50	57	0.00	0.1
5-Mar-15	60	39	79	53	48	57	0.17	0.09
6-Mar-15	40	33	46	45	43	47	0.00	0.05
7-Mar-15	48	36	65	46	40	52	0.00	0.09
8-Mar-15	54	35	74	48	42	54	0.00	0.09
9-Mar-15	65	53	78	51	47	55	0.00	0.09
10-Mar-15	70	59	84	54	50	60	0.00	0.13
11-Mar-15	70	63	81	57	54	61	0.26	0.1
12-Mar-15	70	64	79	58	55	60	0.00	0.08
13-Mar-15	64	60	69	56	55	58	0.17	0.05
14-Mar-15	69	59	81	58	55	63	0.01	0.12
15-Mar-15	66	56	76	58	55	62	0.00	0.1
16-Mar-15	68	51	83	59	54	64	0.00	0.12
17-Mar-15	71	57	84	59	55	64	0.00	0.13
18-Mar-15	69	55	81	59	56	63	0.00	0.11
19-Mar-15	70	64	81	60	57	64	0.03	0.1
20-Mar-15	72	62	84	62	58	67	0.00	0.12
21-Mar-15	72	63	84	63	59	68	0.00	0.12
22-Mar-15	66	62	68	61	59	63	1.09	0.05
23-Mar-15	63	60	68	60	58	62	0.00	0.07
24-Mar-15	61	54	67	59	57	62	0.00	0.08
25-Mar-15	66	52	79	60	55	66	0.02	0.12
26-Mar-15	64	60	71	59	58	61	0.39	0.06
27-Mar-15	59	48	64	57	53	59	0.00	0.09
28-Mar-15	50	40	61	54	51	59	0.00	0.1
29-Mar-15	54	41	68	55	51	60	0.00	0.11
30-Mar-15	63	50	76	56	52	60	0.03	0.1
31-Mar-15	70	60	82	59	55	64	0.00	0.13
High			84			68		
Low		33			40			
Average	63	53	74	55	52	59		
Days over 95 ^o	0			Total for Month			2.17	2.92
				Number of Rain Days			9.00	
Days below 32 ^o	0			59 year Average			5.47	
				Deviation from Average			-3.30	
				Net Gain/loss (Rain - ET)				-0.75

Year Cumulative	
Rain	ET
9.4	6.2
24.0	
15.5	
-6.1	
	3.2

April Daily Weather Data

Date	Temperature						Precipitation			
	Air Temp 6 ft			Soil Temp 4 inch			Rain	Evapo Trans		
	Avg	Min	Max	Avg	Min	Max	Inches	Inches		
1-Apr-15	72	62	84	61	57	67	0.00	0.15		
2-Apr-15	70	60	83	63	59	67	0.00	0.13		
3-Apr-15	69	56	82	63	59	69	0.00	0.14		
4-Apr-15	69	57	77	63	60	66	0.00	0.1		
5-Apr-15	66	49	78	61	56	67	0.00	0.13		
6-Apr-15	71	65	80	63	61	67	0.00	0.11		
7-Apr-15	74	64	87	66	61	71	0.00	0.15		
8-Apr-15	75	61	88	68	62	74	0.00	0.16		
9-Apr-15	74	62	86	68	64	73	0.00	0.14		
10-Apr-15	75	67	85	68	65	72	0.20	0.12		
11-Apr-15	70	66	79	68	65	71	0.04	0.1		
12-Apr-15	69	65	76	66	64	68	1.68	0.07		
13-Apr-15	71	68	76	65	64	67	0.22	0.07		
14-Apr-15	73	69	83	66	64	69	2.30	0.1		
15-Apr-15	74	67	82	67	64	71	0.03	0.12		
16-Apr-15	69	65	76	65	63	68	1.44	0.08		
17-Apr-15	68	64	72	64	63	66	0.92	0.07		
18-Apr-15	72	66	79	65	63	69	0.01	0.1		
19-Apr-15	71	66	76	65	63	66	1.15	0.08		
20-Apr-15	69	64	76	63	61	65	0.00	0.08		
21-Apr-15	66	54	76	64	59	70	0.00	0.15		
22-Apr-15	69	56	83	66	60	72	0.00	0.16		
23-Apr-15	73	59	86	68	62	74	0.00	0.16		
24-Apr-15	73	62	83	69	64	75	0.00	0.16		
25-Apr-15	71	65	83	67	65	70	1.18	0.1		
26-Apr-15	75	65	86	69	63	75	0.00	0.17		
27-Apr-15	67	65	69	66	64	68	0.00	0.06		
28-Apr-15	67	63	72	64	63	66	0.17	0.07		
29-Apr-15	65	57	75	65	62	69	0.18	0.11		
30-Apr-15	65	54	76	64	59	70	0.00	0.15		
High			88			75				
Low		49			56					
Average	70	62	80	65	62	69				
Days over 95 ^o	0			Total for Month			9.52	3.49	18.9	9.7
				Number of Rain Days			13.00		37.0	
Days below 32 ^o	0			59 year Average			4.27		19.8	
				Deviation from Average			5.25		-0.9	
				Net Gain/loss (Rain - ET)				6.03		9.2



Year Cumulative	
Rain	ET
18.9	9.7
37.0	
19.8	
-0.9	
	9.2

Jackson County

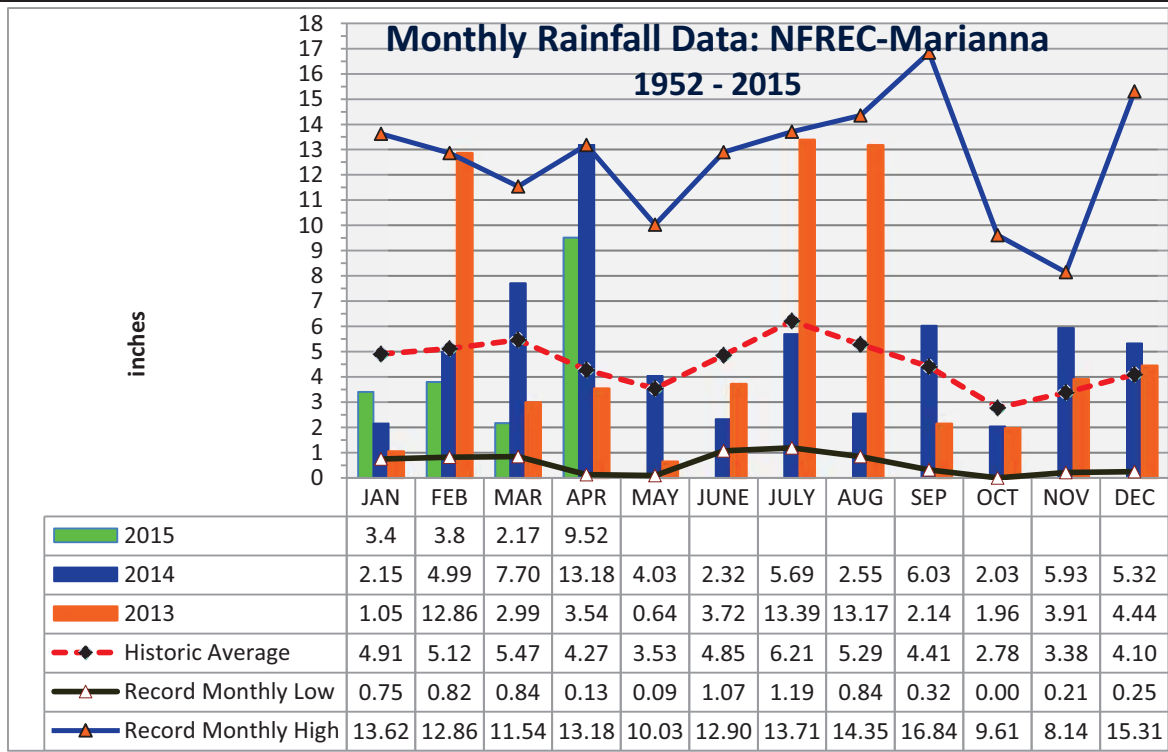
Monthly Total Rainfall, 1952 - 2012

No FL Research & Education Cntr, Marianna, FL



YEAR	JAN	FEB	MAR	APR	MAY	JUNE	JULY	AUG	SEP	OCT	NOV	DEC	TOTAL
1952	1.14	8.88	4.48	2.11	5.13	1.12	5.95	8.81	3.09	0.65	3.26	3.42	48.04
1953	4.84	7.26	3.03	8.43	2.43	3.97	6.84	1.63	6.33	0.65	4.09	<u>15.31</u>	64.81
1954	1.33	3.49	2.62	2.58	1.96	3.46	3.28	2.84	1.72	1.30	2.66	1.44	28.68
1955	3.66	1.83	0.84	5.80	3.03	1.62	6.75	3.75	2.44	2.10	0.72	0.77	33.31
1956	3.59	5.18	3.77	2.04	4.03	5.45	8.52	4.09	6.44	5.08	0.28	3.34	51.81
1957	0.75	2.65	5.17	5.74	4.60	5.75	9.83	5.91	<u>16.84</u>	1.31	6.24	2.22	67.01
1958	4.48	3.61	4.73	7.22	5.57	6.00	8.39	3.45	3.68	1.88	1.75	2.32	53.08
1959	3.67	7.06	8.50	5.73	6.95	3.77	4.83	3.67	3.07	7.93	0.21	1.53	56.92
1960	3.36	7.08	3.41	6.80	3.20	4.75	4.97	4.80	6.22	2.00	0.47	2.35	49.41
1961	4.23	4.15	3.64	5.57	3.97	4.41	3.99	11.09	2.60	0.00	2.84	6.23	52.72
1962	1.72	2.80	8.13	3.28	2.86	3.67	7.97	6.07	3.07	2.82	5.16	1.67	49.22
1963	7.31	3.02	3.18	1.36	3.50	7.99	5.16	1.50	5.25	0.01	4.22	6.05	48.55
1964	10.80	6.81	6.41	9.47	2.23	5.68	9.22	3.07	7.47	<u>9.61</u>	3.35	6.44	<u>80.56</u>
1965	2.63	6.09	5.51	3.96	0.18	9.60	3.26	4.18	4.48	3.41	1.81	3.60	48.71
1966	5.56	9.84	2.57	0.77	5.80	3.13	3.25	9.82	5.09	1.41	2.03	4.62	53.89
1967	8.27	3.32	2.19	0.13	2.61	7.02	6.49	3.58	1.40	1.86	2.40	7.98	47.25
1968	1.28	2.30	3.40	2.50	3.39	1.18	5.45	4.61	2.99	1.41	5.11	5.34	38.96
1969	1.68	3.49	7.08	4.54	3.01	1.71	13.18	3.05	5.64	1.50	1.22	3.80	49.90
1970	4.16	9.20	8.86	1.83	1.81	3.69	5.04	8.01	0.49	4.40	2.21	3.13	52.83
1971	1.97	6.11	7.15	3.17	3.03	3.85	5.20	6.76	2.47	1.84	1.94	3.70	47.19
1972	3.62	6.03	6.41	0.38	2.87	8.89	3.78	5.39	2.14	2.44	3.29	3.77	49.01
1973	8.14	7.71	8.38	7.60	6.87	3.63	11.12	4.51	5.40	0.27	3.64	5.33	72.60
1974	5.24	5.80	2.66	3.40	3.78	1.56	3.29	8.01	4.68	0.84	2.14	2.89	44.29
1975	10.21	6.36	4.91	10.35	3.97	4.10	<u>13.71</u>	5.40	3.81	4.35	2.89	3.28	73.34
1976	6.99	1.50	4.89	1.87	8.89	3.08	3.03	3.47	5.47	6.18	5.72	3.97	55.06
1977	3.47	1.81	6.52	0.88	0.60	6.36	3.55	5.22	9.83	2.59	<u>8.14</u>	4.19	53.16
1978	7.28	3.28	7.25	4.65	6.73	3.79	7.25	4.90	0.98	0.20	6.01	3.65	55.97
1979	7.30	7.78	3.26	7.75	6.22	1.31	7.49	6.30	11.51	0.53	4.47	2.84	66.76
1980	6.58	2.96	<u>11.54</u>	9.29	4.50	3.50	5.87	2.53	4.56	4.71	1.52	0.25	57.81
1981	1.70	5.32	5.94	3.03	2.73	4.74	4.02	2.53	2.44	1.75	0.85	4.94	39.99
1982	4.17	5.61	2.91	5.93	5.39	3.00	7.51	4.42	6.00	2.65	2.34	9.14	59.07
1983	4.92	6.84	8.53	7.88	2.27	5.66	1.19	2.53	8.97	3.52	5.90	7.65	65.86
1984	5.49	5.01	8.62	6.29	2.50	5.31	12.01	5.76	0.32	1.60	1.63	0.80	55.34
1985	4.60	4.46	2.60	1.18	4.44	5.68	3.68	5.58	1.42	7.42	7.91	5.34	54.31
1986	5.68	10.27	3.21	0.83	2.26	1.85	2.75	4.12	2.35	2.22	4.40	5.68	45.62
1987	8.62	5.52	7.23	0.40	4.46	5.43	5.51	4.18	2.27	0.06	4.02	0.81	48.51
1988	5.57	6.40	8.41	2.69	0.28	1.07	5.43	3.98	5.53	1.98	3.28	1.23	45.85
1989	1.59	2.74	4.96	3.63	7.01	<u>12.90</u>	11.19	3.06	3.36	7.20	4.71	5.45	67.80
1990	5.26	4.57	4.55	3.00	3.22	4.02	3.65	2.91	0.85	1.34	0.93	3.42	37.72
1991	<u>13.62</u>	3.44	9.00	5.32	<u>10.03</u>	5.30	10.67	3.89	1.53	1.17	1.60	3.00	68.57
1992	8.37	6.29	7.92	2.50	1.41	11.16	8.69	6.72	3.19	2.08	7.40	2.93	68.66
1993	12.00	3.38	7.41	1.50	1.60	4.18	6.68	3.89	3.44	2.90	2.27	3.63	52.88
1994	8.64	2.53	6.25	4.34	1.82	11.41	10.95	9.08	6.44	7.62	2.53	3.79	75.40
1995	5.23	3.13	4.29	4.35	3.90	5.56	3.02	6.16	0.86	7.51	4.12	1.78	49.91

YEAR	JAN	FEB	MAR	APR	MAY	JUNE	JULY	AUG	SEP	OCT	NOV	DEC	TOTAL
1996	3.64	5.99	8.47	5.76	1.50	5.43	2.83	14.28	5.32	3.81	2.01	3.65	62.69
1997	6.68	5.29	2.63	10.08	5.91	6.41	5.73	4.65	3.78	2.10	6.85	8.44	68.55
1998	6.28	8.30	6.11	2.24	1.45	2.35	4.37	2.20	16.31	0.30	2.05	1.98	53.94
1999	6.95	2.90	3.61	1.50	6.71	8.99	8.64	4.02	4.33	3.13	3.56	2.50	56.84
2000	3.78	4.96	4.48	4.05	0.09	4.00	3.40	7.15	7.20	0.71	4.43	3.21	47.46
2001	2.16	0.82	10.00	1.99	2.52	8.24	4.66	8.21	1.90	1.51	1.70	0.78	44.49
2002	3.82	2.44	5.51	5.78	2.19	3.45	10.34	3.30	11.83	7.36	7.76	5.99	69.77
2003	2.30	7.03	8.18	4.89	3.11	6.11	7.84	5.99	2.39	3.58	3.04	3.12	57.58
2004	3.19	7.66	0.90	4.37	1.19	6.66	4.92	1.67	10.01	3.89	4.97	3.25	52.68
2005	3.33	2.31	9.05	7.04	1.67	7.47	9.44	11.71	1.62	0.03	3.15	4.81	61.63
2006	4.82	3.90	0.91	1.61	4.97	1.99	2.22	5.18	0.91	3.09	3.41	5.43	38.44
2007	5.99	2.45	1.10	0.99	1.57	3.97	3.94	4.18	1.27	4.79	1.89	4.03	36.17
2008	4.26	9.00	9.11	4.28	1.46	8.64	4.02	9.29	0.74	5.11	3.18	8.23	67.32
2009	2.33	3.26	7.11	7.73	9.17	2.78	3.88	3.19	5.22	3.39	2.35	9.57	59.98
2010	7.53	3.99	3.41	4.01	5.09	2.92	2.31	0.84	1.33	0.22	5.82	0.63	38.10
2011	4.33	4.04	5.00	0.92	0.78	1.66	5.11	1.87	2.26	1.84	1.94	3.75	33.50
2012	3.79	7.49	5.94	3.17	1.42	7.35	5.05	14.35	5.17	1.75	1.30	4.10	60.88
2013	1.05	12.86	2.99	3.54	0.64	3.72	13.39	13.17	2.14	1.96	3.91	4.44	63.81
2014	2.15	4.99	7.70	13.18	4.03	2.32	5.69	2.55	6.03	2.03	5.93	5.32	61.92
2015	3.4	3.8	2.17	9.52									18.89
Deviation from the Average Monthly Rainfall													
Inches	-1.51	-1.32	-3.30	5.25									-0.88
Monthly Average Rainfall, 1952-2014													
AVG.	4.91	5.12	5.47	4.27	3.53	4.85	6.21	5.29	4.41	2.78	3.38	4.10	54.32
% of Annual Rainfall Occurring each Month													
	9.0%	9.4%	10.1%	7.9%	6.5%	8.9%	11.4%	9.7%	8.1%	5.1%	6.2%	7.5%	
Record High/Low for the Month													
LOW	0.75	0.82	0.84	0.13	0.09	1.07	1.19	0.84	0.32	0.00	0.21	0.25	18.89
HIGH	13.62	12.86	11.54	13.18	10.03	12.90	13.71	14.35	16.84	9.61	8.14	15.31	80.56



Jackson County
Monthly Cumulative Rainfall, 1952 -2012
North Florida Research & Education Center Marianna, FL



YEAR	JAN	FEB	MAR	APR	MAY	JUNE	JULY	AUG	SEP	OCT	NOV	DEC
1952	1.14	10.02	14.50	16.61	21.74	22.86	28.81	37.62	40.71	41.36	44.62	48.04
1953	4.84	12.10	15.13	23.56	25.99	29.96	36.80	38.43	44.76	45.41	49.50	64.81
1954	1.33	4.82	7.44	10.02	11.98	15.44	18.72	21.56	23.28	24.58	27.24	28.68
1955	3.66	5.49	6.33	12.13	15.16	16.78	23.53	27.28	29.72	31.82	32.54	33.31
1956	3.59	8.77	12.54	14.58	18.61	24.06	32.58	36.67	43.11	48.19	48.47	51.81
1957	0.75	3.40	8.57	14.31	18.91	24.66	34.49	40.40	57.24	58.55	64.79	67.01
1958	4.48	8.09	12.82	20.04	25.61	31.61	40.00	43.45	47.13	49.01	50.76	53.08
1959	3.67	10.73	19.23	24.96	31.91	35.68	40.51	44.18	47.25	55.18	55.39	56.92
1960	3.36	10.44	13.85	20.65	23.85	28.60	33.57	38.37	44.59	46.59	47.06	49.41
1961	4.23	8.38	12.02	17.59	21.56	25.97	29.96	41.05	43.65	43.65	46.49	52.72
1962	1.72	4.52	12.65	15.93	18.79	22.46	30.43	36.50	39.57	42.39	47.55	49.22
1963	7.31	10.33	13.51	14.87	18.37	26.36	31.52	33.02	38.27	38.28	42.50	48.55
1964	10.80	<u>17.61</u>	24.02	<u>33.49</u>	35.72	41.40	50.62	53.69	61.16	<u>70.77</u>	<u>74.12</u>	<u>80.56</u>
1965	2.63	8.72	14.23	18.19	18.37	27.97	31.23	35.41	39.89	43.30	45.11	48.71
1966	5.56	15.40	17.97	18.74	24.54	27.67	30.92	40.74	45.83	47.24	49.27	53.89
1967	8.27	11.59	13.78	13.91	16.52	23.54	30.03	33.61	35.01	36.87	39.27	47.25
1968	1.28	3.58	6.98	9.48	12.87	14.05	19.50	24.11	27.10	28.51	33.62	38.96
1969	1.68	5.17	12.25	16.79	19.80	21.51	34.69	37.74	43.38	44.88	46.10	49.90
1970	4.16	13.36	22.22	24.05	25.86	29.55	34.59	42.60	43.09	47.49	49.70	52.83
1971	1.97	8.08	15.23	18.40	21.43	25.28	30.48	37.24	39.71	41.55	43.49	47.19
1972	3.62	9.65	16.06	16.44	19.31	28.20	31.98	37.37	39.51	41.95	45.24	49.01
1973	8.14	15.85	24.23	31.83	38.70	42.33	53.45	57.96	<u>63.36</u>	63.63	67.27	72.60
1974	5.24	11.04	13.70	17.10	20.88	22.44	25.73	33.74	38.42	39.26	41.40	44.29
1975	10.21	16.57	21.48	31.83	35.80	39.90	53.61	59.01	62.82	67.17	70.06	73.34
1976	6.99	8.49	13.38	15.25	24.14	27.22	30.25	33.72	39.19	45.37	51.09	55.06
1977	3.47	5.28	11.80	12.68	13.28	19.64	23.19	28.41	38.24	40.83	48.97	53.16
1978	7.28	10.56	17.81	22.46	29.19	32.98	40.23	45.13	46.11	46.31	52.32	55.97
1979	7.30	15.08	18.34	26.09	32.31	33.62	41.11	47.41	58.92	59.45	63.92	66.76
1980	6.58	9.54	21.08	30.37	34.87	38.37	44.24	46.77	51.33	56.04	57.56	57.81
1981	1.70	7.02	12.96	15.99	18.72	23.46	27.48	30.01	32.45	34.20	35.05	39.99
1982	4.17	9.78	12.69	18.62	24.01	27.01	34.52	38.94	44.94	47.59	49.93	59.07
1983	4.92	11.76	20.29	28.17	30.44	36.10	37.29	39.82	48.79	52.31	58.21	65.86
1984	5.49	10.50	19.12	25.41	27.91	33.22	45.23	50.99	51.31	52.91	54.54	55.34
1985	4.60	9.06	11.66	12.84	17.28	22.96	26.64	32.22	33.64	41.06	48.97	54.31
1986	5.68	15.95	19.16	19.99	22.25	24.10	26.85	30.97	33.32	35.54	39.94	45.62
1987	8.62	14.14	21.37	21.77	26.23	31.66	37.17	41.35	43.62	43.68	47.70	48.51
1988	5.57	11.97	20.38	23.07	23.35	24.42	29.85	33.83	39.36	41.34	44.62	45.85
1989	1.59	4.33	9.29	12.92	19.93	32.83	44.02	47.08	50.44	57.64	62.35	67.80
1990	5.26	9.83	14.38	17.38	20.60	24.62	28.27	31.18	32.03	33.37	34.30	37.72
1991	<u>13.62</u>	17.06	<u>26.06</u>	31.38	<u>41.41</u>	<u>46.71</u>	<u>57.38</u>	<u>61.27</u>	62.80	63.97	65.57	68.57
1992	8.37	14.66	22.58	25.08	26.49	37.65	46.34	53.06	56.25	58.33	65.73	68.66
1993	12.00	15.38	22.79	24.29	25.89	30.07	36.75	40.64	44.08	46.98	49.25	52.88
1994	8.64	11.17	17.42	21.76	23.58	34.99	45.94	55.02	61.46	69.08	71.61	75.40
1995	5.23	8.36	12.65	17.00	20.90	26.46	29.48	35.64	36.50	44.01	48.13	49.91

YEAR	JAN	FEB	MAR	APR	MAY	JUNE	JULY	AUG	SEP	OCT	NOV	DEC
1996	3.64	9.63	18.10	23.86	25.36	30.79	33.62	47.90	53.22	57.03	59.04	62.69
1997	6.68	11.97	14.60	24.68	30.59	37.00	42.73	47.38	51.16	53.26	60.11	68.55
1998	6.28	14.58	20.69	22.93	24.38	26.73	31.10	33.30	49.61	49.91	51.96	53.94
1999	6.95	9.85	13.46	14.96	21.67	30.66	39.30	43.32	47.65	50.78	54.34	56.84
2000	3.78	8.74	13.22	17.27	17.36	21.36	24.76	31.91	39.11	39.82	44.25	47.46
2001	2.16	2.98	12.98	14.97	17.49	25.73	30.39	38.60	40.50	42.01	43.71	44.49
2002	3.82	6.26	11.77	17.55	19.74	23.19	33.53	36.83	48.66	56.02	63.78	69.77
2003	2.30	9.33	17.51	22.40	25.51	31.62	39.46	45.45	47.84	51.42	54.46	57.58
2004	3.19	10.85	11.75	16.12	17.31	23.97	28.89	30.56	40.57	44.46	49.43	52.68
2005	3.33	5.64	14.69	21.73	23.40	30.87	40.31	52.02	53.64	53.67	56.82	61.63
2006	4.82	8.72	9.63	11.24	16.21	18.20	20.42	25.60	26.51	29.60	33.01	38.44
2007	5.99	8.44	9.54	10.53	12.10	16.07	20.01	24.19	25.46	30.25	32.14	36.17
2008	4.26	13.26	22.37	26.65	28.11	36.75	40.77	50.06	50.80	55.91	59.09	67.32
2009	2.33	5.59	12.70	20.43	29.60	32.38	36.26	39.45	44.67	48.06	50.41	59.98
2010	7.53	11.52	14.93	18.94	24.03	26.95	29.26	30.10	31.43	31.65	37.47	38.10
2011	4.33	8.37	13.37	14.29	15.07	16.73	21.84	23.71	25.97	27.81	29.75	33.50
2012	3.79	11.28	17.22	20.39	21.81	29.16	34.21	48.56	53.73	55.48	56.78	60.88
2013	1.05	13.91	16.90	20.44	21.08	24.80	38.19	51.36	53.50	55.46	59.37	63.81
2014	2.15	7.14	14.84	28.02	32.05	34.37	40.06	42.61	48.64	50.67	56.60	61.92

2015 3.40 7.20 9.37 18.89

2014 Deviation from the Average Accumulation

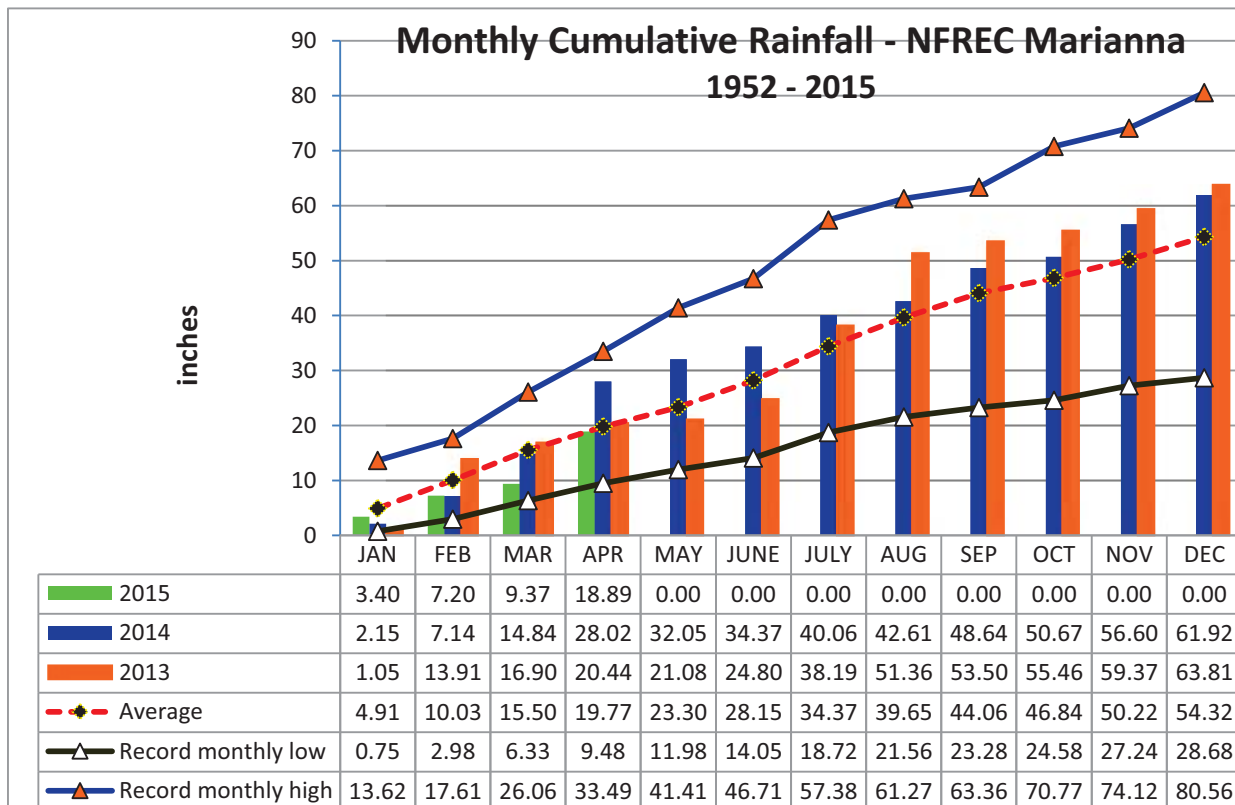
Inches	-1.51	-2.83	-6.13	-0.88
--------	-------	-------	-------	-------

Average Accumulation, 1952-2014

Inches	4.91	10.03	15.50	19.77	23.30	28.15	34.37	39.65	44.06	46.84	50.22	54.32
--------	------	-------	-------	-------	-------	-------	-------	-------	-------	-------	-------	-------

Record High/Low Accumulation

LOW	0.75	2.98	6.33	9.48	11.98	14.05	18.72	21.56	23.28	24.58	27.24	28.68
HIGH	13.62	17.61	26.06	33.49	41.41	46.71	57.38	61.27	63.36	70.77	74.12	80.56



2015 FAWN Panhandle Weather Station Summary						
FAWN Station	Data	Jan	Feb	Mar	Apr	Total
Monticello	Rain	5.8	5.8	2.7	5.8	20.0
	Hist Avg	4.5	4.6	6.1	4.1	19.3
	Deviation	1.3	1.2	-3.5	1.7	0.7
Quincy	Rain	5.4	3.5	2.4	6.0	17.3
	Hist Avg	5.0	4.3	5.6	3.7	18.6
	Deviation	0.4	-0.8	-3.3	2.3	-1.4
Carrabelle	Rain	4.3	5.2	1.9	4.8	16.1
	Hist Avg	3.8	3.7	4.9	3.0	15.4
	Deviation	0.5	1.5	-3.0	1.8	0.7
Marianna	Rain	3.4	3.8	2.2	9.5	18.9
	Hist Avg	4.9	5.1	5.5	4.3	19.8
	Deviation	-1.5	-1.3	-3.3	5.2	-0.9
DeFuniak	Rain	3.3	3.6	2.1	9.6	18.6
	Hist Avg	4.8	5.0	6.1	4.7	20.6
	Deviation	-1.5	-1.5	-4.0	4.9	-2.0
Jay	Rain	4.4	3.5	1.3	12.6	21.8
	Hist Avg	5.5	5.3	6.6	4.8	22.2
	Deviation	-1.1	-1.9	-5.4	7.8	-0.4
6 Station Average		4.4	4.2	2.1	8.1	18.8

