



Jackson County 2018 Weather Data

67 Years of Weather Data Recorded at the UF/IFAS Marianna North Florida Research and Education Center



Doug Mayo
Jackson County Extension Director

1952-2008 Rainfall Data compiled by
Ed Jowers, Emeritus County Extension Director

Data provided by Florida Automated Weather Station (FAWN)
UF/IFAS North Florida Research and Education Center
Greenwood, Florida



<http://fawn.ifas.ufl.edu/station.php?id=130>

Tower Name	Tower Number	Latitude Degree, Minutes	Latitude Degrees, Minutes, Seconds	Latitude Degrees Decimal	Longitude Degree, Minutes	Longitude Degrees, Minutes, Seconds	Longitude Degrees Decimal	Elevation Feet
Marianna	130.00	N 30°51.000'	N 30°50'00.00"	N 30.85000°	-85°09.910'	-85°09'54.60"	-85.16516°	115'

January Daily Weather Data

Temperature							Precipitation			
Date	Air Temp 6 ft			Soil Temp 4 inch			Rain	Evapo Trans		
	Avg	Min	Max	Avg	Min	Max	Inches	Inches		
1-Jan-18	33	27	39	47	42	52	0.01	0.03		
2-Jan-18	30	22	41	43	38	51	0.00	0.03		
3-Jan-18	33	28	42	43	40	49	0.00	0.03		
4-Jan-18	33	24	44	42	37	50	0.00	0.03		
5-Jan-18	33	22	49	43	37	52	0.00	0.03		
6-Jan-18	36	22	51	44	38	53	0.00	0.03		
7-Jan-18	40	24	54	45	39	54	0.00	0.04		
8-Jan-18	49	38	58	48	45	52	0.00	0.05		
9-Jan-18	60	55	70	55	51	62	0.00	0.05		
10-Jan-18	64	59	72	60	56	64	0.04	0.05		
11-Jan-18	66	63	75	64	61	68	0.01	0.06		
12-Jan-18	58	39	68	62	54	67	0.94	0.06		
13-Jan-18	35	29	44	49	44	54	0.00	0.03		
14-Jan-18	35	26	48	46	40	55	0.00	0.03		
15-Jan-18	40	27	56	48	41	58	0.00	0.04		
16-Jan-18	45	28	62	49	42	57	0.00	0.05		
17-Jan-18	30	25	41	45	39	50	0.03	0.03		
18-Jan-18	32	21	48	43	36	52	0.00	0.04		
19-Jan-18	38	22	57	45	38	56	0.00	0.04		
20-Jan-18	47	29	63	49	41	58	0.00	0.05		
21-Jan-18	52	38	69	54	47	64	0.00	0.05		
22-Jan-18	60	45	72	56	51	61	0.03	0.06		
23-Jan-18	58	45	66	60	54	66	0.01	0.06		
24-Jan-18	46	36	55	53	49	58	0.00	0.05		
25-Jan-18	47	33	64	54	46	64	0.00	0.05		
26-Jan-18	51	34	67	54	46	62	0.00	0.06		
27-Jan-18	61	53	72	59	54	65	0.00	0.07		
28-Jan-18	61	58	65	61	59	63	3.18	0.04		
29-Jan-18	57	44	64	60	53	64	0.01	0.06		
30-Jan-18	44	33	53	53	47	60	0.00	0.05		
31-Jan-18	45	31	61	52	44	63	0.00	0.06		
High			75			68				
Low		21			36					
Average	46	35	58	51	46	58				
Days over 95 ⁰				Total for Month			4.26	1.41	4.3	1.4
				Number of Rain Days			9.00		9.0	
				Historic Average			4.91		4.9	
Days below 32 ⁰	16			Deviation from Average			-0.65		-0.6	
				Net Gain/loss (Rain - ET)				2.85		2.9

Year Cumulative
Rain ET
4.3 1.4
9.0
4.9
-0.6
2.9

February Daily Weather Data

Date	Temperature						Precipitation			
	Air Temp 6 ft			Soil Temp 4 inch			Rain	Evapo Trans		
	Avg	Min	Max	Avg	Min	Max	Inches	Inches		
1-Feb-18	54	36	66	54	47	60	0.00	0.06		
2-Feb-18	52	39	60	58	52	65	0.00	0.06		
3-Feb-18	47	31	59	54	47	61	0.00	0.06		
4-Feb-18	60	51	71	58	55	64	1.47	0.07		
5-Feb-18	53	42	67	58	50	67	0.00	0.07		
6-Feb-18	60	42	76	59	51	69	0.00	0.08		
7-Feb-18	64	60	76	63	61	67	1.21	0.06		
8-Feb-18	56	47	68	61	56	68	0.02	0.08		
9-Feb-18	56	46	64	59	54	64	0.00	0.06		
10-Feb-18	64	55	75	62	59	66	0.00	0.07		
11-Feb-18	64	62	70	64	63	65	5.75	0.04		
12-Feb-18	64	59	68	64	62	68	1.50	0.05		
13-Feb-18	63	58	72	65	62	70	0.05	0.07		
14-Feb-18	63	56	73	66	61	74	0.00	0.08		
15-Feb-18	66	60	73	67	64	73	0.00	0.08		
16-Feb-18	70	61	79	70	66	76	0.00	0.1		
17-Feb-18	69	60	79	70	65	77	0.00	0.1		
18-Feb-18	71	61	82	72	66	81	0.00	0.1		
19-Feb-18	69	60	81	72	68	81	0.00	0.1		
20-Feb-18	70	59	81	71	66	77	0.00	0.09		
21-Feb-18	72	64	83	73	68	80	0.00	0.1		
22-Feb-18	70	60	82	73	67	80	0.00	0.1		
23-Feb-18	70	57	83	73	67	81	0.00	0.1		
24-Feb-18	70	59	82	72	67	79	0.00	0.1		
25-Feb-18	68	60	83	73	70	80	0.00	0.1		
26-Feb-18	63	57	70	70	66	74	0.39	0.07		
27-Feb-18	60	52	68	68	61	76	0.11	0.09		
28-Feb-18	67	57	79	69	63	76	0.00	0.09		
High			83			81				
Low		31			47					
Average	63	54	74	66	61	72				
Days over 95 ^o			0	Total for Month			10.50	2.23	14.8	3.6
				Number of Rain Days			8.00		17.0	
				Historic Average			5.14		10.0	
Days below 32 ^o		1		Deviation from Average			5.36		4.7	
				Net Gain/loss (Rain - ET)				8.27		11.1

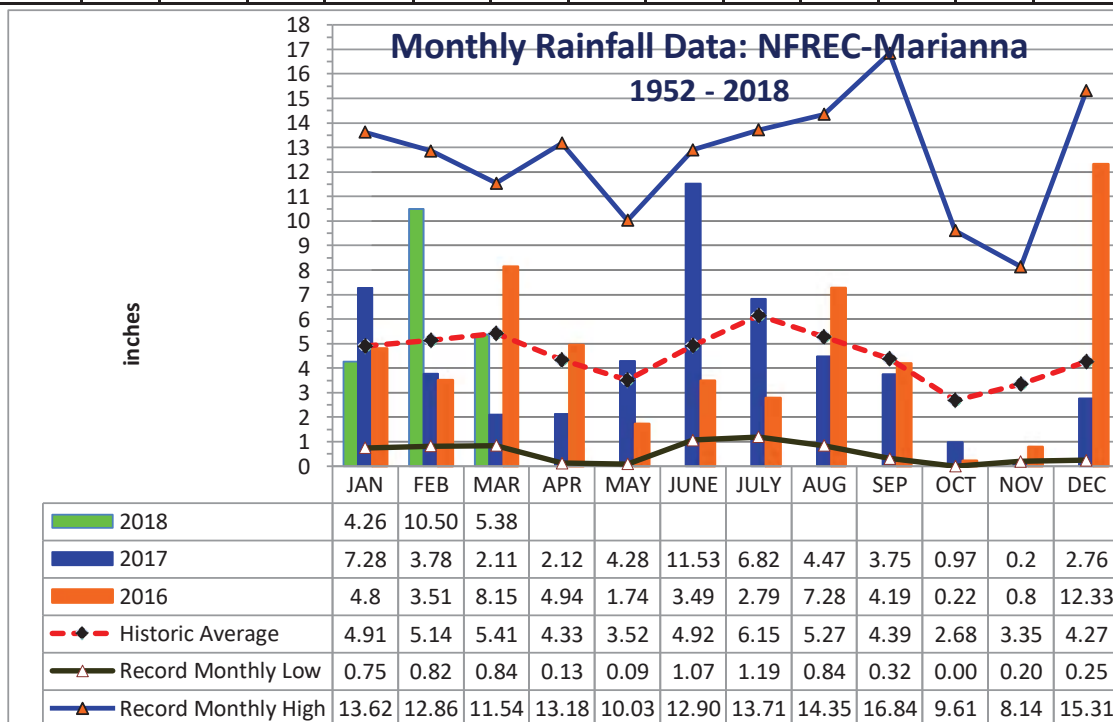
Year Cumulative	
Rain	ET
14.8	3.6
17.0	
10.0	
4.7	
	11.1



YEAR	JAN	FEB	MAR	APR	MAY	JUNE	JULY	AUG	SEP	OCT	NOV	DEC	TOTAL
1952	1.14	8.88	4.48	2.11	5.13	1.12	5.95	8.81	3.09	0.65	3.26	3.42	48.04
1953	4.84	7.26	3.03	8.43	2.43	3.97	6.84	1.63	6.33	0.65	4.09	15.31	64.81
1954	1.33	3.49	2.62	2.58	1.96	3.46	3.28	2.84	1.72	1.30	2.66	1.44	28.68
1955	3.66	1.83	0.84	5.80	3.03	1.62	6.75	3.75	2.44	2.10	0.72	0.77	33.31
1956	3.59	5.18	3.77	2.04	4.03	5.45	8.52	4.09	6.44	5.08	0.28	3.34	51.81
1957	0.75	2.65	5.17	5.74	4.60	5.75	9.83	5.91	16.84	1.31	6.24	2.22	67.01
1958	4.48	3.61	4.73	7.22	5.57	6.00	8.39	3.45	3.68	1.88	1.75	2.32	53.08
1959	3.67	7.06	8.50	5.73	6.95	3.77	4.83	3.67	3.07	7.93	0.21	1.53	56.92
1960	3.36	7.08	3.41	6.80	3.20	4.75	4.97	4.80	6.22	2.00	0.47	2.35	49.41
1961	4.23	4.15	3.64	5.57	3.97	4.41	3.99	11.09	2.60	0.00	2.84	6.23	52.72
1962	1.72	2.80	8.13	3.28	2.86	3.67	7.97	6.07	3.07	2.82	5.16	1.67	49.22
1963	7.31	3.02	3.18	1.36	3.50	7.99	5.16	1.50	5.25	0.01	4.22	6.05	48.55
1964	10.80	6.81	6.41	9.47	2.23	5.68	9.22	3.07	7.47	9.61	3.35	6.44	80.56
1965	2.63	6.09	5.51	3.96	0.18	9.60	3.26	4.18	4.48	3.41	1.81	3.60	48.71
1966	5.56	9.84	2.57	0.77	5.80	3.13	3.25	9.82	5.09	1.41	2.03	4.62	53.89
1967	8.27	3.32	2.19	0.13	2.61	7.02	6.49	3.58	1.40	1.86	2.40	7.98	47.25
1968	1.28	2.30	3.40	2.50	3.39	1.18	5.45	4.61	2.99	1.41	5.11	5.34	38.96
1969	1.68	3.49	7.08	4.54	3.01	1.71	13.18	3.05	5.64	1.50	1.22	3.80	49.90
1970	4.16	9.20	8.86	1.83	1.81	3.69	5.04	8.01	0.49	4.40	2.21	3.13	52.83
1971	1.97	6.11	7.15	3.17	3.03	3.85	5.20	6.76	2.47	1.84	1.94	3.70	47.19
1972	3.62	6.03	6.41	0.38	2.87	8.89	3.78	5.39	2.14	2.44	3.29	3.77	49.01
1973	8.14	7.71	8.38	7.60	6.87	3.63	11.12	4.51	5.40	0.27	3.64	5.33	72.60
1974	5.24	5.80	2.66	3.40	3.78	1.56	3.29	8.01	4.68	0.84	2.14	2.89	44.29
1975	10.21	6.36	4.91	10.35	3.97	4.10	13.71	5.40	3.81	4.35	2.89	3.28	73.34
1976	6.99	1.50	4.89	1.87	8.89	3.08	3.03	3.47	5.47	6.18	5.72	3.97	55.06
1977	3.47	1.81	6.52	0.88	0.60	6.36	3.55	5.22	9.83	2.59	8.14	4.19	53.16
1978	7.28	3.28	7.25	4.65	6.73	3.79	7.25	4.90	0.98	0.20	6.01	3.65	55.97
1979	7.30	7.78	3.26	7.75	6.22	1.31	7.49	6.30	11.51	0.53	4.47	2.84	66.76
1980	6.58	2.96	11.54	9.29	4.50	3.50	5.87	2.53	4.56	4.71	1.52	0.25	57.81
1981	1.70	5.32	5.94	3.03	2.73	4.74	4.02	2.53	2.44	1.75	0.85	4.94	39.99
1982	4.17	5.61	2.91	5.93	5.39	3.00	7.51	4.42	6.00	2.65	2.34	9.14	59.07
1983	4.92	6.84	8.53	7.88	2.27	5.66	1.19	2.53	8.97	3.52	5.90	7.65	65.86
1984	5.49	5.01	8.62	6.29	2.50	5.31	12.01	5.76	0.32	1.60	1.63	0.80	55.34
1985	4.60	4.46	2.60	1.18	4.44	5.68	3.68	5.58	1.42	7.42	7.91	5.34	54.31
1986	5.68	10.27	3.21	0.83	2.26	1.85	2.75	4.12	2.35	2.22	4.40	5.68	45.62
1987	8.62	5.52	7.23	0.40	4.46	5.43	5.51	4.18	2.27	0.06	4.02	0.81	48.51
1988	5.57	6.40	8.41	2.69	0.28	1.07	5.43	3.98	5.53	1.98	3.28	1.23	45.85
1989	1.59	2.74	4.96	3.63	7.01	12.90	11.19	3.06	3.36	7.20	4.71	5.45	67.80
1990	5.26	4.57	4.55	3.00	3.22	4.02	3.65	2.91	0.85	1.34	0.93	3.42	37.72
1991	13.62	3.44	9.00	5.32	10.03	5.30	10.67	3.89	1.53	1.17	1.60	3.00	68.57
1992	8.37	6.29	7.92	2.50	1.41	11.16	8.69	6.72	3.19	2.08	7.40	2.93	68.66
1993	12.00	3.38	7.41	1.50	1.60	4.18	6.68	3.89	3.44	2.90	2.27	3.63	52.88
1994	8.64	2.53	6.25	4.34	1.82	11.41	10.95	9.08	6.44	7.62	2.53	3.79	75.40
1995	5.23	3.13	4.29	4.35	3.90	5.56	3.02	6.16	0.86	7.51	4.12	1.78	49.91
1996	3.64	5.99	8.47	5.76	1.50	5.43	2.83	14.28	5.32	3.81	2.01	3.65	62.69

YEAR	JAN	FEB	MAR	APR	MAY	JUNE	JULY	AUG	SEP	OCT	NOV	DEC	TOTAL
1997	6.68	5.29	2.63	10.08	5.91	6.41	5.73	4.65	3.78	2.10	6.85	8.44	68.55
1998	6.28	8.30	6.11	2.24	1.45	2.35	4.37	2.20	16.31	0.30	2.05	1.98	53.94
1999	6.95	2.90	3.61	1.50	6.71	8.99	8.64	4.02	4.33	3.13	3.56	2.50	56.84
2000	3.78	4.96	4.48	4.05	0.09	4.00	3.40	7.15	7.20	0.71	4.43	3.21	47.46
2001	2.16	0.82	10.00	1.99	2.52	8.24	4.66	8.21	1.90	1.51	1.70	0.78	44.49
2002	3.82	2.44	5.51	5.78	2.19	3.45	10.34	3.30	11.83	7.36	7.76	5.99	69.77
2003	2.30	7.03	8.18	4.89	3.11	6.11	7.84	5.99	2.39	3.58	3.04	3.12	57.58
2004	3.19	7.66	0.90	4.37	1.19	6.66	4.92	1.67	10.01	3.89	4.97	3.25	52.68
2005	3.33	2.31	9.05	7.04	1.67	7.47	9.44	11.71	1.62	0.03	3.15	4.81	61.63
2006	4.82	3.90	0.91	1.61	4.97	1.99	2.22	5.18	0.91	3.09	3.41	5.43	38.44
2007	5.99	2.45	1.10	0.99	1.57	3.97	3.94	4.18	1.27	4.79	1.89	4.03	36.17
2008	4.26	9.00	9.11	4.28	1.46	8.64	4.02	9.29	0.74	5.11	3.18	8.23	67.32
2009	2.33	3.26	7.11	7.73	9.17	2.78	3.88	3.19	5.22	3.39	2.35	9.57	59.98
2010	7.53	3.99	3.41	4.01	5.09	2.92	2.31	0.84	1.33	0.22	5.82	0.63	38.10
2011	4.33	4.04	5.00	0.92	0.78	1.66	5.11	1.87	2.26	1.84	1.94	3.75	33.50
2012	3.79	7.49	5.94	3.17	1.42	7.35	5.05	14.35	5.17	1.75	1.30	4.10	60.88
2013	1.05	12.86	2.99	3.54	0.64	3.72	13.39	13.17	2.14	1.96	3.91	4.44	63.81
2014	2.15	4.99	7.70	13.18	4.03	2.32	5.69	2.55	6.03	2.03	5.93	5.32	61.92
2015	3.4	3.8	2.17	9.52	3.55	4.04	4.85	2.75	4.15	1.00	7.33	8.67	55.23
2016	4.8	3.51	8.15	4.94	1.74	3.49	2.79	7.28	4.19	0.22	0.8	12.33	54.24
2017	7.28	3.78	2.11	2.12	4.28	11.53	6.82	4.47	3.75	0.97	0.2	2.76	50.07

2018 4.26 10.50 5.38													
Deviation from the Average Monthly Rainfall													
Inches	-0.65	5.36	-0.03										4.69
Monthly Average Rainfall, 1952-2018													
AVG.	4.91	5.14	5.41	4.33	3.52	4.92	6.15	5.27	4.39	2.68	3.35	4.27	54.34
% of Annual Rainfall Occuring each Month													
	9.0%	9.5%	10.0%	8.0%	6.5%	9.1%	11.3%	9.7%	8.1%	4.9%	6.2%	7.9%	
Record High/Low for the Month													
LOW	0.75	0.82	0.84	0.13	0.09	1.07	1.19	0.84	0.32	0.00	0.20	0.25	28.68
HIGH	13.62	12.86	11.54	13.18	10.03	12.90	13.71	14.35	16.84	9.61	8.14	15.31	80.56





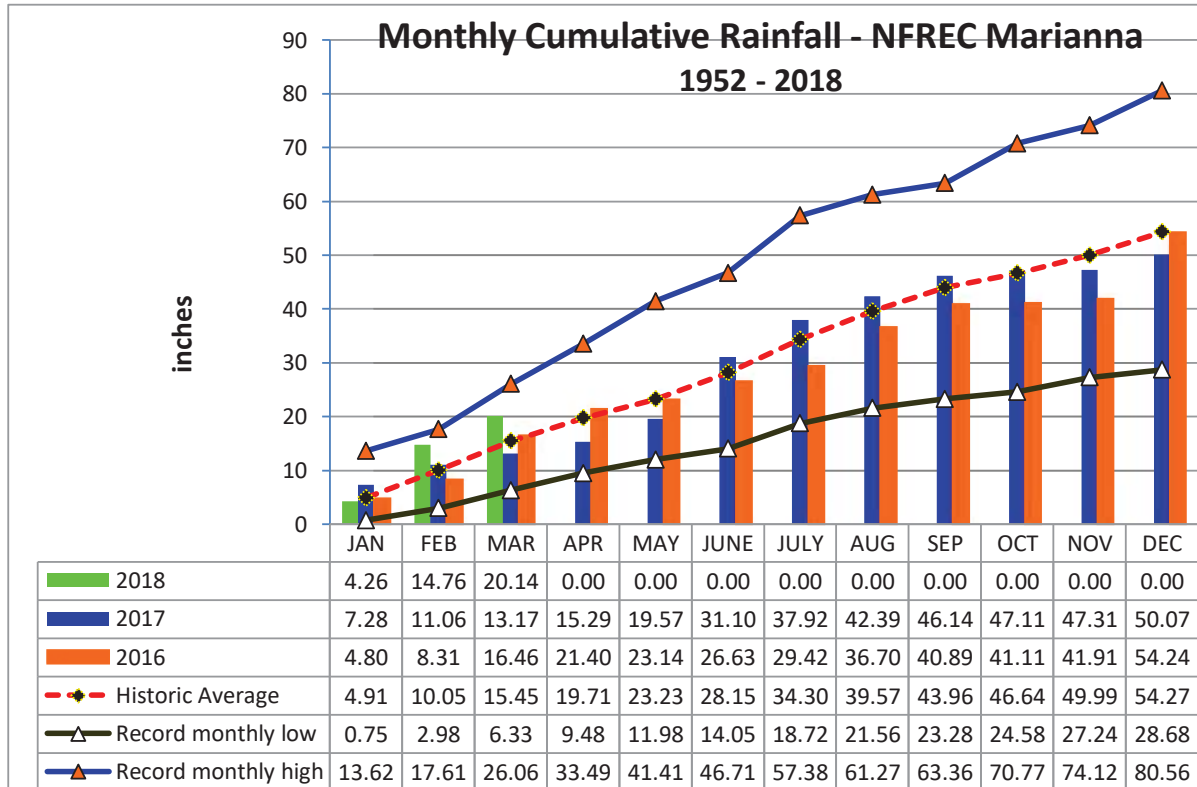
Jackson County
Monthly Cumulative Rainfall, 1952 -2018
 North Florida Research & Education Center Marianna,
 FL



YEAR	JAN	FEB	MAR	APR	MAY	JUNE	JULY	AUG	SEP	OCT	NOV	DEC
1952	1.14	10.02	14.50	16.61	21.74	22.86	28.81	37.62	40.71	41.36	44.62	48.04
1953	4.84	12.10	15.13	23.56	25.99	29.96	36.80	38.43	44.76	45.41	49.50	64.81
1954	1.33	4.82	7.44	10.02	11.98	15.44	18.72	21.56	23.28	24.58	27.24	28.68
1955	3.66	5.49	6.33	12.13	15.16	16.78	23.53	27.28	29.72	31.82	32.54	33.31
1956	3.59	8.77	12.54	14.58	18.61	24.06	32.58	36.67	43.11	48.19	48.47	51.81
1957	0.75	3.40	8.57	14.31	18.91	24.66	34.49	40.40	57.24	58.55	64.79	67.01
1958	4.48	8.09	12.82	20.04	25.61	31.61	40.00	43.45	47.13	49.01	50.76	53.08
1959	3.67	10.73	19.23	24.96	31.91	35.68	40.51	44.18	47.25	55.18	55.39	56.92
1960	3.36	10.44	13.85	20.65	23.85	28.60	33.57	38.37	44.59	46.59	47.06	49.41
1961	4.23	8.38	12.02	17.59	21.56	25.97	29.96	41.05	43.65	43.65	46.49	52.72
1962	1.72	4.52	12.65	15.93	18.79	22.46	30.43	36.50	39.57	42.39	47.55	49.22
1963	7.31	10.33	13.51	14.87	18.37	26.36	31.52	33.02	38.27	38.28	42.50	48.55
1964	10.80	<u>17.61</u>	24.02	<u>33.49</u>	35.72	41.40	50.62	53.69	61.16	<u>70.77</u>	<u>74.12</u>	<u>80.56</u>
1965	2.63	8.72	14.23	18.19	18.37	27.97	31.23	35.41	39.89	43.30	45.11	48.71
1966	5.56	15.40	17.97	18.74	24.54	27.67	30.92	40.74	45.83	47.24	49.27	53.89
1967	8.27	11.59	13.78	13.91	16.52	23.54	30.03	33.61	35.01	36.87	39.27	47.25
1968	1.28	3.58	6.98	9.48	12.87	14.05	19.50	24.11	27.10	28.51	33.62	38.96
1969	1.68	5.17	12.25	16.79	19.80	21.51	34.69	37.74	43.38	44.88	46.10	49.90
1970	4.16	13.36	22.22	24.05	25.86	29.55	34.59	42.60	43.09	47.49	49.70	52.83
1971	1.97	8.08	15.23	18.40	21.43	25.28	30.48	37.24	39.71	41.55	43.49	47.19
1972	3.62	9.65	16.06	16.44	19.31	28.20	31.98	37.37	39.51	41.95	45.24	49.01
1973	8.14	15.85	24.23	31.83	38.70	42.33	53.45	57.96	<u>63.36</u>	63.63	67.27	72.60
1974	5.24	11.04	13.70	17.10	20.88	22.44	25.73	33.74	38.42	39.26	41.40	44.29
1975	10.21	16.57	21.48	31.83	35.80	39.90	53.61	59.01	62.82	67.17	70.06	73.34
1976	6.99	8.49	13.38	15.25	24.14	27.22	30.25	33.72	39.19	45.37	51.09	55.06
1977	3.47	5.28	11.80	12.68	13.28	19.64	23.19	28.41	38.24	40.83	48.97	53.16
1978	7.28	10.56	17.81	22.46	29.19	32.98	40.23	45.13	46.11	46.31	52.32	55.97
1979	7.30	15.08	18.34	26.09	32.31	33.62	41.11	47.41	58.92	59.45	63.92	66.76
1980	6.58	9.54	21.08	30.37	34.87	38.37	44.24	46.77	51.33	56.04	57.56	57.81
1981	1.70	7.02	12.96	15.99	18.72	23.46	27.48	30.01	32.45	34.20	35.05	39.99
1982	4.17	9.78	12.69	18.62	24.01	27.01	34.52	38.94	44.94	47.59	49.93	59.07
1983	4.92	11.76	20.29	28.17	30.44	36.10	37.29	39.82	48.79	52.31	58.21	65.86
1984	5.49	10.50	19.12	25.41	27.91	33.22	45.23	50.99	51.31	52.91	54.54	55.34
1985	4.60	9.06	11.66	12.84	17.28	22.96	26.64	32.22	33.64	41.06	48.97	54.31
1986	5.68	15.95	19.16	19.99	22.25	24.10	26.85	30.97	33.32	35.54	39.94	45.62
1987	8.62	14.14	21.37	21.77	26.23	31.66	37.17	41.35	43.62	43.68	47.70	48.51
1988	5.57	11.97	20.38	23.07	23.35	24.42	29.85	33.83	39.36	41.34	44.62	45.85
1989	1.59	4.33	9.29	12.92	19.93	32.83	44.02	47.08	50.44	57.64	62.35	67.80
1990	5.26	9.83	14.38	17.38	20.60	24.62	28.27	31.18	32.03	33.37	34.30	37.72
1991	<u>13.62</u>	17.06	<u>26.06</u>	31.38	<u>41.41</u>	<u>46.71</u>	<u>57.38</u>	<u>61.27</u>	62.80	63.97	65.57	68.57
1992	8.37	14.66	22.58	25.08	26.49	37.65	46.34	53.06	56.25	58.33	65.73	68.66
1993	12.00	15.38	22.79	24.29	25.89	30.07	36.75	40.64	44.08	46.98	49.25	52.88
1994	8.64	11.17	17.42	21.76	23.58	34.99	45.94	55.02	61.46	69.08	71.61	75.40
1995	5.23	8.36	12.65	17.00	20.90	26.46	29.48	35.64	36.50	44.01	48.13	49.91
1996	3.64	9.63	18.10	23.86	25.36	30.79	33.62	47.90	53.22	57.03	59.04	62.69

YEAR	JAN	FEB	MAR	APR	MAY	JUNE	JULY	AUG	SEP	OCT	NOV	DEC
1997	6.68	11.97	14.60	24.68	30.59	37.00	42.73	47.38	51.16	53.26	60.11	68.55
1998	6.28	14.58	20.69	22.93	24.38	26.73	31.10	33.30	49.61	49.91	51.96	53.94
1999	6.95	9.85	13.46	14.96	21.67	30.66	39.30	43.32	47.65	50.78	54.34	56.84
2000	3.78	8.74	13.22	17.27	17.36	21.36	24.76	31.91	39.11	39.82	44.25	47.46
2001	2.16	2.98	12.98	14.97	17.49	25.73	30.39	38.60	40.50	42.01	43.71	44.49
2002	3.82	6.26	11.77	17.55	19.74	23.19	33.53	36.83	48.66	56.02	63.78	69.77
2003	2.30	9.33	17.51	22.40	25.51	31.62	39.46	45.45	47.84	51.42	54.46	57.58
2004	3.19	10.85	11.75	16.12	17.31	23.97	28.89	30.56	40.57	44.46	49.43	52.68
2005	3.33	5.64	14.69	21.73	23.40	30.87	40.31	52.02	53.64	53.67	56.82	61.63
2006	4.82	8.72	9.63	11.24	16.21	18.20	20.42	25.60	26.51	29.60	33.01	38.44
2007	5.99	8.44	9.54	10.53	12.10	16.07	20.01	24.19	25.46	30.25	32.14	36.17
2008	4.26	13.26	22.37	26.65	28.11	36.75	40.77	50.06	50.80	55.91	59.09	67.32
2009	2.33	5.59	12.70	20.43	29.60	32.38	36.26	39.45	44.67	48.06	50.41	59.98
2010	7.53	11.52	14.93	18.94	24.03	26.95	29.26	30.10	31.43	31.65	37.47	38.10
2011	4.33	8.37	13.37	14.29	15.07	16.73	21.84	23.71	25.97	27.81	29.75	33.50
2012	3.79	11.28	17.22	20.39	21.81	29.16	34.21	48.56	53.73	55.48	56.78	60.88
2013	1.05	13.91	16.90	20.44	21.08	24.80	38.19	51.36	53.50	55.46	59.37	63.81
2014	2.15	7.14	14.84	28.02	32.05	34.37	40.06	42.61	48.64	50.67	56.60	61.92
2015	3.40	7.20	9.37	18.89	22.44	26.48	31.33	34.08	38.23	39.23	46.56	55.23
2016	4.80	8.31	16.46	21.40	23.14	26.63	29.42	36.70	40.89	41.11	41.91	54.24
2017	7.28	11.06	13.17	15.29	19.57	31.10	37.92	42.39	46.14	47.11	47.31	50.07
2018	4.26	14.76	20.14									

Deviation from the Average Accumulation												
Inches	-0.65	4.71	4.69									
Average Accumulation, 1952-2018												
Inches	4.91	10.05	15.45	19.71	23.23	28.15	34.30	39.57	43.96	46.64	49.99	54.27
Record High/Low Accumulation												
LOW	0.75	2.98	6.33	9.48	11.98	14.05	18.72	21.56	23.28	24.58	27.24	28.68
HIGH	13.62	17.61	26.06	33.49	41.41	46.71	57.38	61.27	63.36	70.77	74.12	80.56



**2018 UF/IFAS FAWN Panhandle
Weather Station Summary**

FAWN Station	Data	Jan	Feb	Mar	Total
Monticello	Rain	1.3	3.1	--	-
	Hist Avg	4.5	4.6	6.1	15.2
	Deviation	-3.2	-1.5	-	-
Quincy	Rain	2.1	5.3	5.4	12.8
	Hist Avg	5.0	4.3	5.6	14.9
	Deviation	-2.9	1.0	-0.2	-2.2
Carrabelle	Rain	2.1	4.2	1.0	7.3
	Hist Avg	3.8	3.7	4.9	12.4
	Deviation	-1.7	0.5	-3.9	-5.1
Marianna	Rain	4.3	10.5	5.4	20.1
	Hist Avg	4.9	5.1	5.4	15.5
	Deviation	-0.6	5.4	0.0	4.7
DeFuniak	Rain	1.3	11.2	5.0	17.5
	Hist Avg	4.9	5.4	5.6	16.0
	Deviation	-3.7	5.8	-0.6	1.5
Jay	Rain	2.8	5.5	1.3	9.6
	Hist Avg	5.5	5.3	6.6	17.4
	Deviation	-2.7	0.2	-5.3	-7.8
6 Station Average		2.3	6.6	3.6	13.5

**2018 Panhandle FAWN
Jan-March Rainfall Totals**

