



Jackson County 2020 Weather Data

69 Years of Weather Data Recorded at the UF/IFAS Marianna North Florida Research and Education Center



Doug Mayo
Jackson County Extension Director

1952-2008 Rainfall Data compiled by
Ed Jowers, Emeritus County Extension Director

Data provided by Florida Automated Weather Station (FAWN)
UF/IFAS North Florida Research and Education Center
Greenwood, Florida



<http://fawn.ifas.ufl.edu/>

Tower Name	Tower Number	Latitude Degree, Minutes	Latitude Degrees, Minutes, Seconds	Latitude Degrees Decimal	Longitude Degree, Minutes	Longitude Degrees, Minutes, Seconds	Longitude Degrees Decimal	Elevation Feet
Marianna	130.00	N 30°51.000'	N 30°50'00.00"	N 30.85000°	-85°09.910'	-85°09'54.60"	-85.16516°	115'

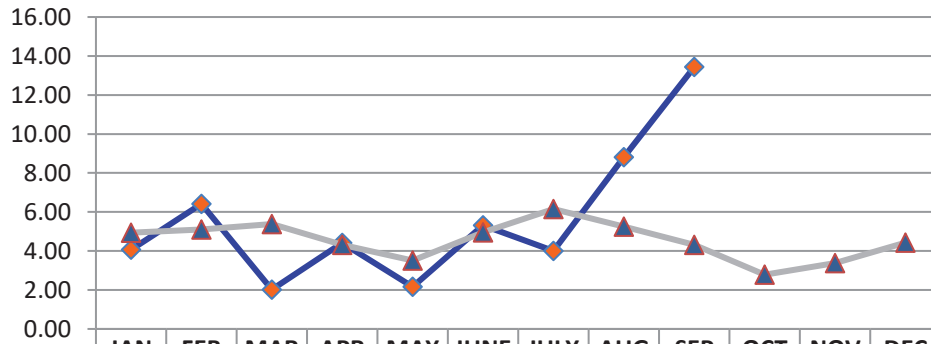
2020 UF/IFAS FAWN Marianna Weather Summary

Month	6' Air Temp			Soil Temp			Rainfall Inches	Dev from Hist Avg
	High	Low	Avg	High	Low	Avg		
January	82	29	56	72	43	58	4.1	-0.9
February	80	33	58	74	46	60	6.4	1.3
March	89	38	69	88	50	71	2.0	-3.4
April	89	48	69	88	61	74	4.4	0.1
May	92	51	75	92	64	79	2.2	-1.4
June	95	63	80	101	76	85	5.3	0.4
July	96	70	81	100	79	87	4.0	-2.2
August	96	70	81	102	77	85	8.8	3.6
September	96	52	76	95	65	81	13.4	9.1
2020	96	29	72	102	43	76	50.6	6.7

Data: UF/IFAS Florida Automated Weather Network Marianna Station

Total days <32° 2 Total days >95° 7

Monthly Rainfall @ Marianna FAWN



	JAN	FEB	MAR	APR	MAY	JUNE	JULY	AUG	SEP	OCT	NOV	DEC
2020	4.06	6.42	2.02	4.42	2.16	5.31	4.00	8.81	13.44			
Historic Avg	4.93	5.10	5.38	4.32	3.51	4.95	6.15	5.26	4.31	2.78	3.38	4.42

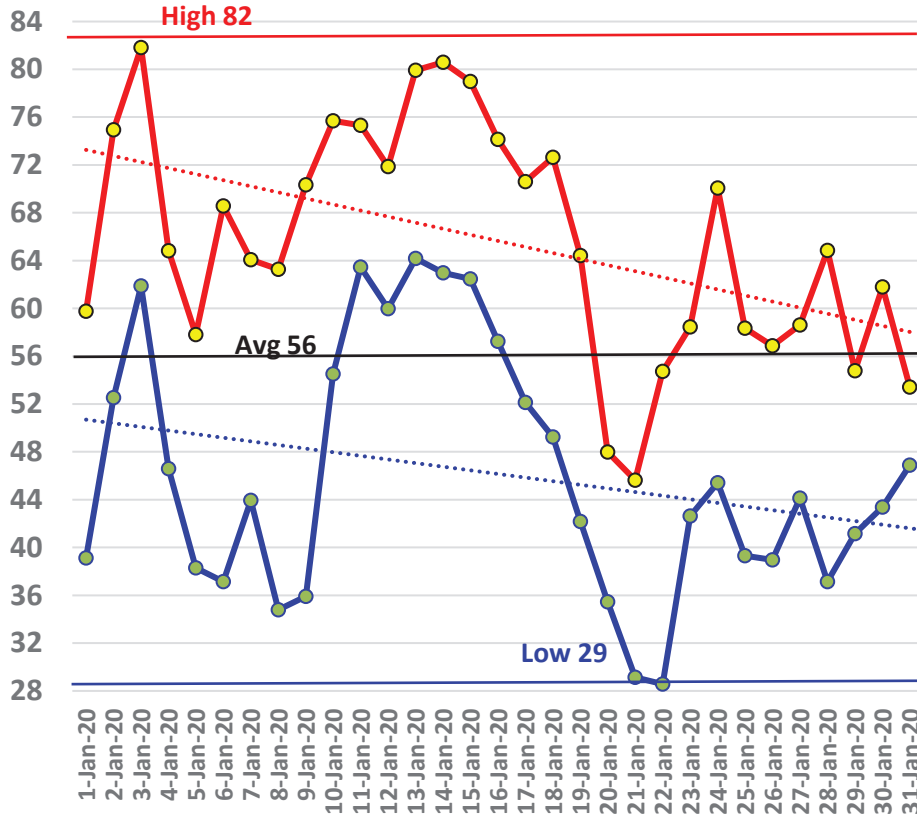
◆ 2020 ▲ Historic Avg

January Daily Weather Data

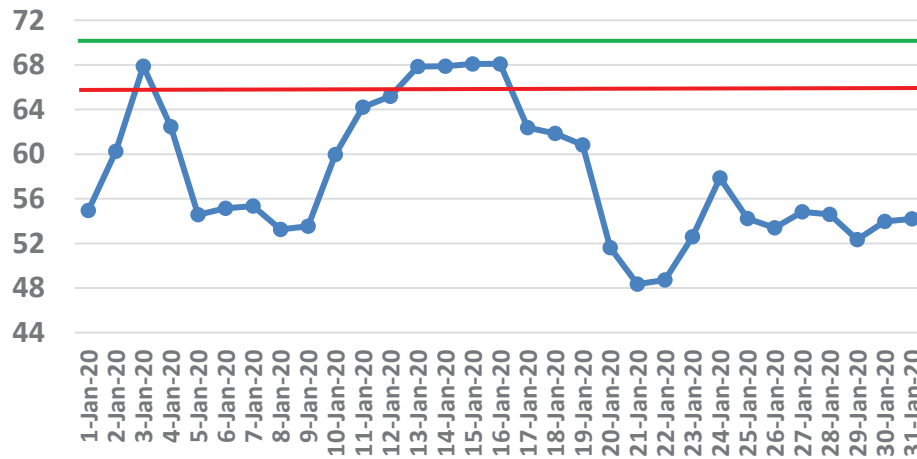
Temperature							Precipitation		
Date	Air Temp 6 ft			Soil Temp 4 inch			Rain	Evapo Trans	
	Avg	Min	Max	Avg	Min	Max	Inches	Inches	
1-Jan-20	49	39	60	55	51	60	0.00	0.04	
2-Jan-20	65	53	75	60	56	65	0.00	0.06	
3-Jan-20	73	62	82	68	65	71	0.90	0.07	
4-Jan-20	59	47	65	62	55	66	0.05	0.05	
5-Jan-20	47	38	58	55	50	60	0.00	0.04	
6-Jan-20	52	37	69	55	49	62	0.00	0.05	
7-Jan-20	54	44	64	55	52	60	0.00	0.05	
8-Jan-20	48	35	63	53	48	59	0.00	0.04	
9-Jan-20	54	36	70	54	47	59	0.00	0.06	
10-Jan-20	66	55	76	60	55	65	0.00	0.06	
11-Jan-20	70	63	75	64	62	67	1.81	0.05	
12-Jan-20	66	60	72	65	62	68	0.00	0.05	
13-Jan-20	71	64	80	68	66	72	0.00	0.06	
14-Jan-20	69	63	81	68	65	72	0.01	0.06	
15-Jan-20	70	62	79	68	65	72	0.00	0.06	
16-Jan-20	69	57	74	68	63	70	0.00	0.06	
17-Jan-20	59	52	71	62	60	66	0.00	0.06	
18-Jan-20	61	49	73	62	58	66	0.43	0.06	
19-Jan-20	55	42	64	61	53	64	0.01	0.06	
20-Jan-20	41	35	48	52	48	55	0.00	0.04	
21-Jan-20	36	29	46	48	44	53	0.00	0.04	
22-Jan-20	43	29	55	49	43	54	0.00	0.05	
23-Jan-20	51	43	58	53	50	56	0.21	0.05	
24-Jan-20	59	45	70	58	55	63	0.06	0.06	
25-Jan-20	49	39	58	54	50	59	0.00	0.05	
26-Jan-20	48	39	57	53	50	56	0.05	0.05	
27-Jan-20	51	44	59	55	53	59	0.07	0.05	
28-Jan-20	50	37	65	55	49	61	0.00	0.06	
29-Jan-20	47	41	55	52	51	55	0.32	0.05	
30-Jan-20	52	43	62	54	49	60	0.00	0.06	
31-Jan-20	50	47	53	54	53	55	0.14	0.04	
High			82			72			
Low		29			43				
Average	56	46	66	58	54	62			
Days over 95 ⁰	0			Total for Month		4.06	1.64	4.1	1.6
				Number of Rain Days		12		12.0	
				Historic Average		4.93		4.9	
Days below 32 ⁰	2			Deviation from Average		-0.87		-0.9	
				Net Gain/loss (Rain - ET)			2.42		2.4

Year Cumulative	
Rain	ET
4.1	1.6
12.0	
4.9	
-0.9	
	2.4

Jan Marianna FAWN 6' Air Temps



January Avg Soil Temps Marianna

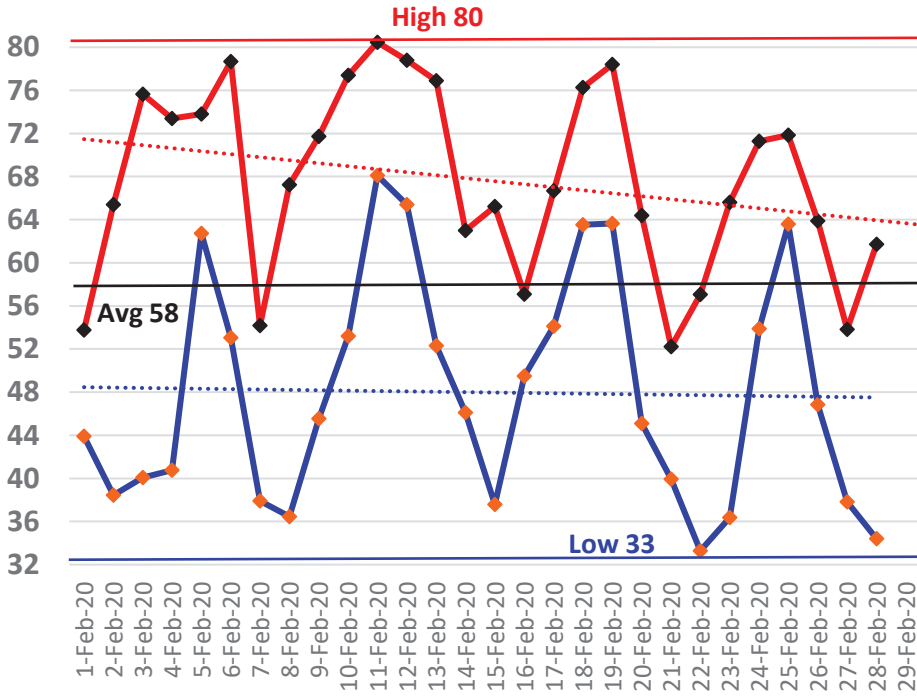


February Daily Weather Data

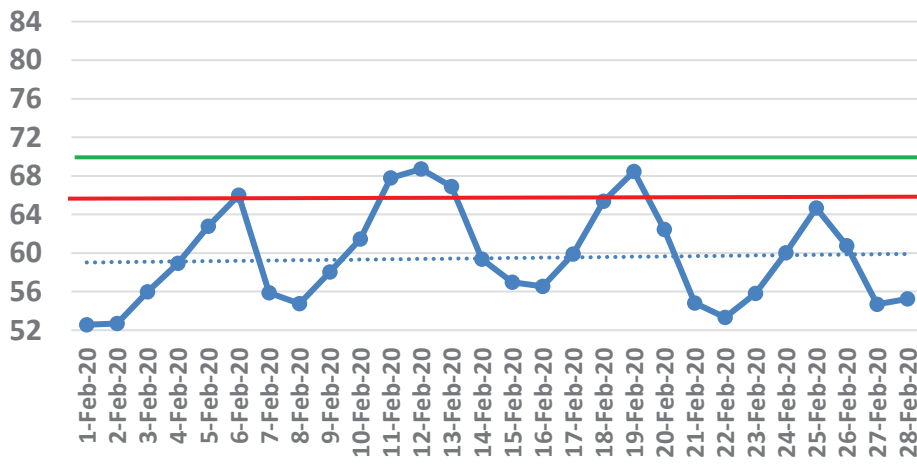
Date	Temperature						Precipitation	
	Air Temp 6 ft			Soil Temp 4 inch			Rain	Evapo Trans
	Avg	Min	Max	Avg	Min	Max	Inches	Inches
1-Feb-20	48	44	54	53	50	54	0.00	0.05
2-Feb-20	52	38	65	53	47	59	0.00	0.07
3-Feb-20	57	40	76	56	49	64	0.00	0.08
4-Feb-20	63	41	73	59	54	64	0.06	0.07
5-Feb-20	68	63	74	63	60	65	0.62	0.06
6-Feb-20	71	53	79	66	61	68	2.04	0.08
7-Feb-20	46	38	54	56	51	61	0.00	0.06
8-Feb-20	52	36	67	55	48	62	0.00	0.07
9-Feb-20	57	46	72	58	52	65	0.00	0.08
10-Feb-20	65	53	77	61	55	68	0.00	0.09
11-Feb-20	73	68	80	68	64	73	0.00	0.08
12-Feb-20	72	65	79	69	66	73	0.00	0.08
13-Feb-20	66	52	77	67	60	69	1.09	0.07
14-Feb-20	53	46	63	59	55	65	0.01	0.08
15-Feb-20	51	38	65	57	50	65	0.00	0.08
16-Feb-20	53	49	57	57	55	58	0.45	0.04
17-Feb-20	60	54	67	60	57	64	0.01	0.06
18-Feb-20	69	64	76	65	62	70	0.01	0.07
19-Feb-20	70	64	78	68	65	74	0.01	0.08
20-Feb-20	56	45	64	62	55	66	0.68	0.06
21-Feb-20	46	40	52	55	51	59	0.00	0.06
22-Feb-20	44	33	57	53	46	62	0.00	0.07
23-Feb-20	52	36	66	56	48	64	0.00	0.07
24-Feb-20	63	54	71	60	56	64	1.27	0.07
25-Feb-20	67	64	72	65	62	68	0.17	0.06
26-Feb-20	58	47	64	61	54	64	0.00	0.06
27-Feb-20	45	38	54	55	48	63	0.00	0.07
28-Feb-20	48	34	62	55	47	65	0.00	0.08
29-Feb-20	53	42	66	57	49	66	0.00	0.09
High			80			74		
Low		33			46			
Average	58	48	68	60	54	65		
Days over 95 ⁰	0			Total for Month			6.42	2.04
				Number of Rain Days			12	
Days below 32 ⁰	0			Historic Average			5.10	
				Deviation from Average			1.32	
				Net Gain/loss (Rain - ET)				4.38

Year Cumulative	
Rain	ET
10.5	3.7
24.0	
10.0	
0.4	
	6.8

February Marianna FAWN 6' Air Temps



February Avg Soil Temps Marianna

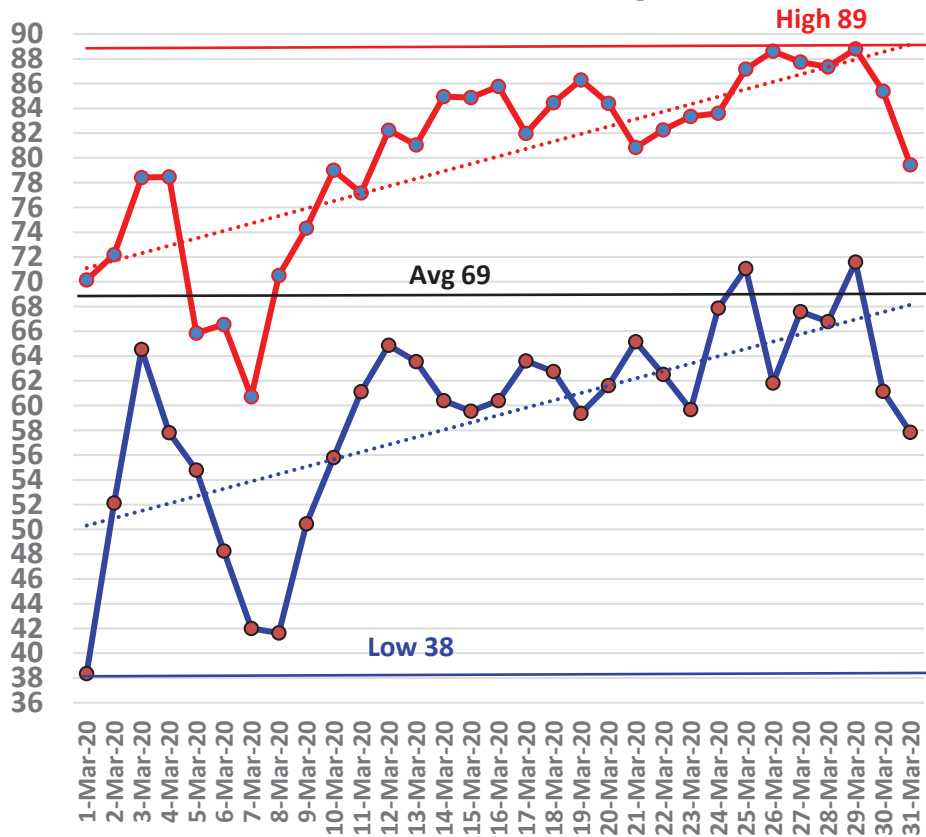


March Daily Weather Data

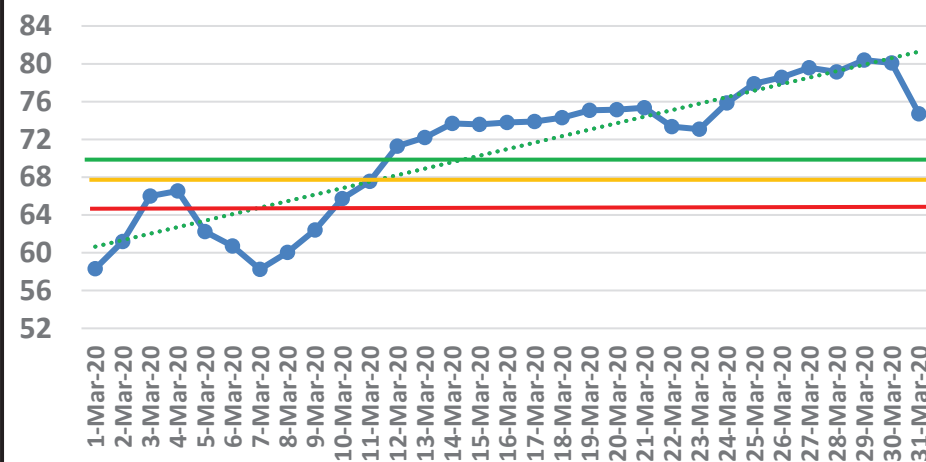
Temperature							Precipitation		
Date	Air Temp 6 ft			Soil Temp 4 inch			Rain	Evapo Trans	
	Avg	Min	Max	Avg	Min	Max	Inches	Inches	
1-Mar-20	55	38	70	58	50	67	0.00	0.09	
2-Mar-20	63	52	72	61	56	66	0.12	0.08	
3-Mar-20	71	65	78	66	62	70	0.00	0.09	
4-Mar-20	66	58	78	67	63	70	0.74	0.07	
5-Mar-20	59	55	66	62	61	65	0.35	0.05	
6-Mar-20	58	48	67	61	56	67	0.00	0.1	
7-Mar-20	50	42	61	58	51	68	0.00	N/A	
8-Mar-20	56	42	71	60	52	70	0.00	0.09	
9-Mar-20	62	50	74	62	56	70	0.00	0.09	
10-Mar-20	66	56	79	66	60	75	0.00	0.1	
11-Mar-20	68	61	77	68	64	74	0.00	0.08	
12-Mar-20	71	65	82	71	65	80	0.00	0.12	
13-Mar-20	71	64	81	72	67	80	0.00	0.1	
14-Mar-20	71	60	85	74	67	83	0.00	0.12	
15-Mar-20	72	60	85	74	67	81	0.00	0.11	
16-Mar-20	73	60	86	74	67	81	0.00	0.11	
17-Mar-20	72	64	82	74	69	80	0.02	0.1	
18-Mar-20	73	63	84	74	69	81	0.00	0.11	
19-Mar-20	72	59	86	75	68	84	0.00	0.13	
20-Mar-20	73	62	84	75	70	82	0.00	0.11	
21-Mar-20	72	65	81	75	71	82	0.46	0.1	
22-Mar-20	71	63	82	73	68	80	0.00	0.11	
23-Mar-20	71	60	83	73	67	81	0.00	0.11	
24-Mar-20	74	68	84	76	71	83	0.00	0.13	
25-Mar-20	78	71	87	78	72	86	0.00	0.15	
26-Mar-20	75	62	89	79	71	88	0.00	0.14	
27-Mar-20	76	68	88	80	74	88	0.00	0.14	
28-Mar-20	75	67	87	79	74	87	0.00	0.13	
29-Mar-20	79	72	89	80	75	88	0.00	0.13	
30-Mar-20	75	61	85	80	73	88	0.00	0.13	
31-Mar-20	69	58	79	75	68	78	0.33	0.09	
High			89			88			
Low		38			50				
Average	69	59	80	71	65	78			
Days over 95 ^o				Total for Month			2.02	3.21	
				Number of Rain Days					
Days below 32 ^o				Historic Average			5.38		
				Deviation from Average					
				Net Gain/loss (Rain - ET)				-1.19	

Year Cumulative	
Rain	ET
12.5	6.9
30.0	
15.4	
-2.9	
	5.6

March Marianna FAWN 6' Air Temps



March Avg Soil Temps Marianna

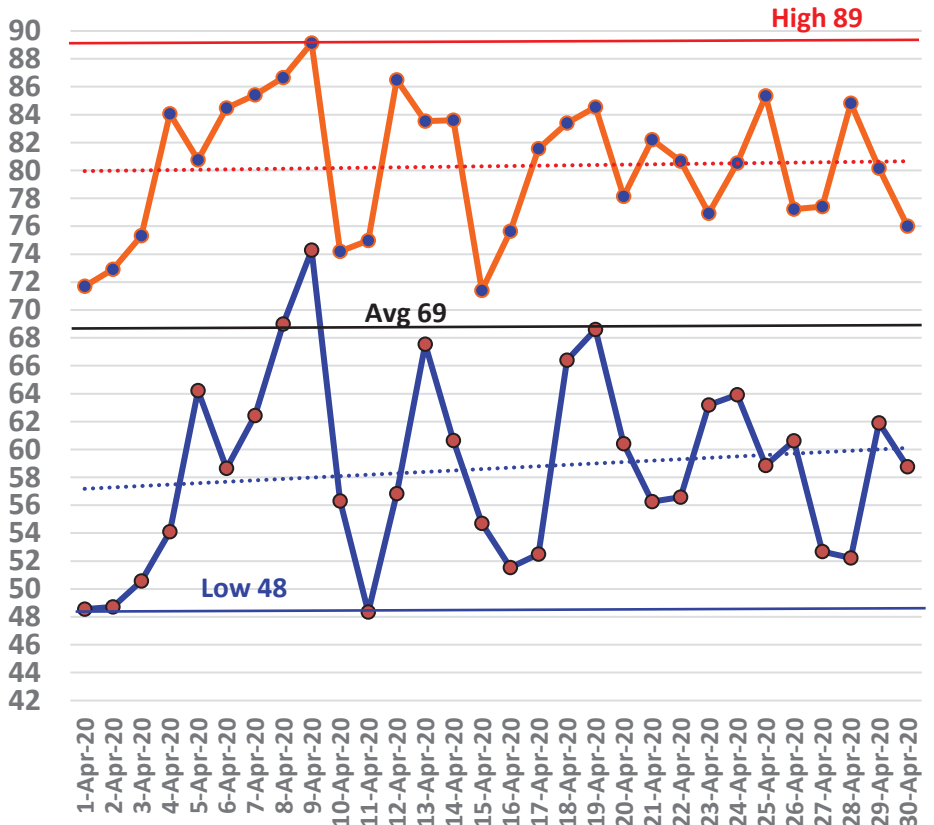


April Daily Weather Data

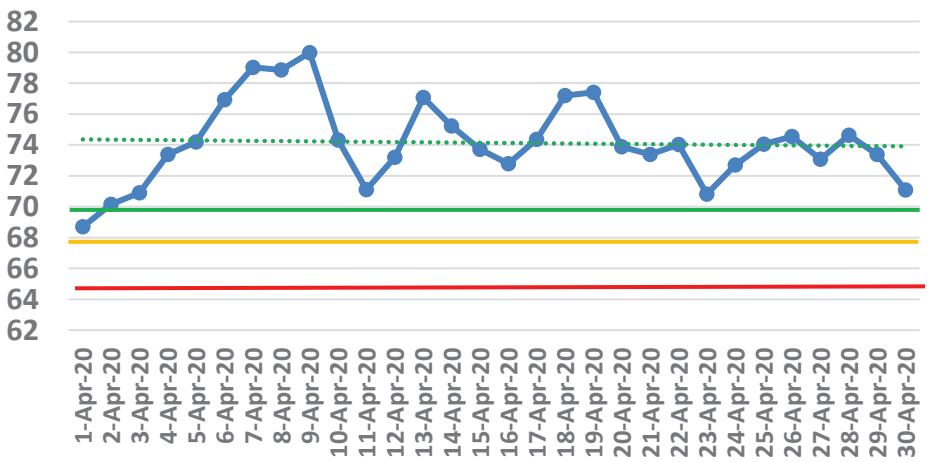
Temperature							Precipitation	
Date	Air Temp 6 ft			Soil Temp 4 inch			Rain	Evapo Trans
	Avg	Min	Max	Avg	Min	Max	Inches	Inches
1-Apr-20	60	49	72	69	61	78	0.00	0.12
2-Apr-20	60	49	73	70	62	80	0.00	0.12
3-Apr-20	64	51	75	71	65	79	0.00	0.1
4-Apr-20	69	54	84	73	66	83	0.00	0.13
5-Apr-20	71	64	81	74	70	80	0.02	0.1
6-Apr-20	72	59	84	77	69	87	0.00	0.14
7-Apr-20	74	62	85	79	72	88	0.00	0.14
8-Apr-20	76	69	87	79	75	85	0.31	0.11
9-Apr-20	80	74	89	80	75	88	0.00	0.16
10-Apr-20	67	56	74	74	68	79	0.20	0.11
11-Apr-20	62	48	75	71	63	81	0.00	0.12
12-Apr-20	73	57	87	73	67	79	0.00	0.12
13-Apr-20	77	68	84	77	73	83	0.55	0.14
14-Apr-20	72	61	84	75	68	84	0.00	0.13
15-Apr-20	64	55	71	74	68	80	0.01	0.12
16-Apr-20	63	52	76	73	64	83	0.00	0.14
17-Apr-20	68	53	82	74	66	84	0.00	0.14
18-Apr-20	74	66	83	77	73	83	0.01	0.12
19-Apr-20	76	69	85	77	74	82	0.04	0.11
20-Apr-20	69	60	78	74	69	79	0.85	0.13
21-Apr-20	70	56	82	73	66	81	0.00	0.15
22-Apr-20	70	57	81	74	67	82	0.00	0.14
23-Apr-20	67	63	77	71	68	74	1.75	0.06
24-Apr-20	71	64	81	73	68	81	0.00	0.16
25-Apr-20	73	59	85	74	68	82	0.00	0.16
26-Apr-20	69	61	77	75	69	81	0.00	0.15
27-Apr-20	65	53	77	73	66	82	0.00	0.15
28-Apr-20	69	52	85	75	67	84	0.00	0.15
29-Apr-20	70	62	80	73	71	76	0.67	0.09
30-Apr-20	67	59	76	71	67	76	0.01	0.14
High			89			88		
Low		48			61			
Average	69	59	80	74	68	81		
Days over 95 ^o				Total for Month			4.42	3.85
				Number of Rain Days			11	
				Historic Average			4.32	
				Deviation from Average			0.10	
				Net Gain/loss (Rain - ET)				0.57
Days below 32 ^o								

Year Cumulative	
Rain	ET
16.9	10.7
41.0	
19.7	
-2.8	
	6.2

April Marianna FAWN 6' Air Temps



April Avg Soil Temps Marianna

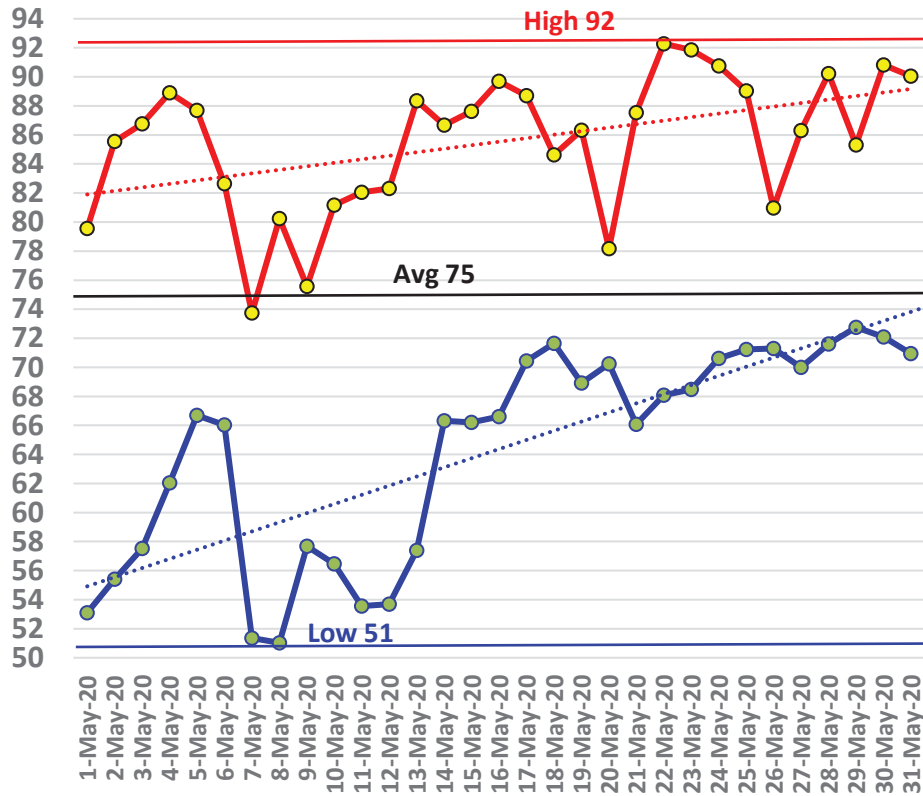


May Daily Weather Data

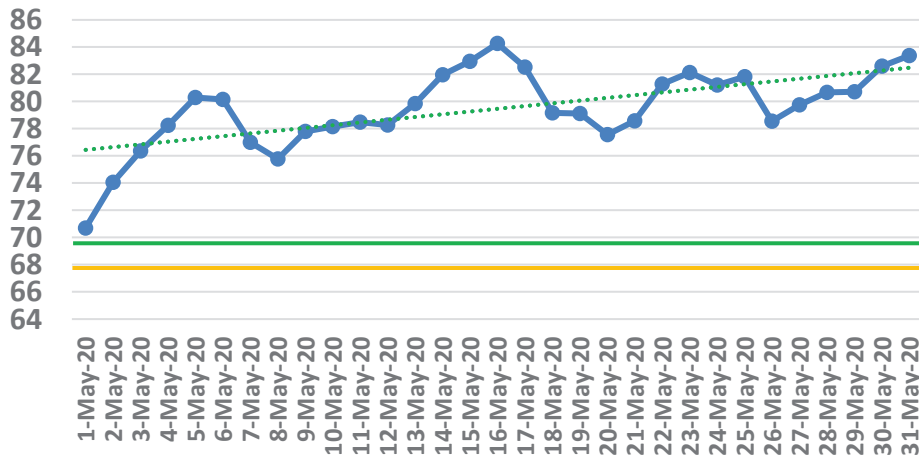
Temperature							Precipitation	
Date	Air Temp 6 ft			Soil Temp 4 inch			Rain	Evapo Trans
	Avg	Min	Max	Avg	Min	Max	Inches	Inches
1-May-20	67	53	80	71	64	79	0.00	0.15
2-May-20	71	55	86	74	66	83	0.00	0.16
3-May-20	72	58	87	76	69	85	0.00	0.16
4-May-20	74	62	89	78	72	87	0.00	0.17
5-May-20	77	67	88	80	75	87	0.00	0.17
6-May-20	74	66	83	80	76	86	0.00	0.17
7-May-20	63	51	74	77	71	84	0.00	0.14
8-May-20	68	51	80	76	70	82	0.00	0.14
9-May-20	67	58	76	78	73	84	0.00	0.15
10-May-20	68	56	81	78	72	86	0.00	0.15
11-May-20	70	54	82	78	72	86	0.00	0.16
12-May-20	68	54	82	78	71	86	0.03	0.15
13-May-20	74	57	88	80	73	88	0.00	0.2
14-May-20	77	66	87	82	76	89	0.00	0.22
15-May-20	77	66	88	83	77	90	0.00	0.21
16-May-20	79	67	90	84	78	92	0.00	0.21
17-May-20	76	70	89	83	79	89	0.66	0.16
18-May-20	76	72	85	79	77	84	0.13	0.15
19-May-20	77	69	86	79	74	86	0.00	0.22
20-May-20	74	70	78	78	76	80	0.14	0.1
21-May-20	75	66	88	79	74	85	0.00	0.16
22-May-20	79	68	92	81	75	89	0.00	0.2
23-May-20	77	68	92	82	76	92	0.21	0.19
24-May-20	80	71	91	81	77	87	0.00	0.19
25-May-20	78	71	89	82	77	89	0.07	0.18
26-May-20	75	71	81	79	77	80	0.03	0.08
27-May-20	76	70	86	80	76	87	0.57	0.15
28-May-20	79	72	90	81	76	87	0.00	0.18
29-May-20	78	73	85	81	77	85	0.32	0.16
30-May-20	81	72	91	83	77	89	0.00	0.22
31-May-20	81	71	90	83	78	91	0	N/A
High			92			92		
Low		51			64			
Average	75	64	86	79	74	86		
				Total for Month			2.16	5.05
Days over 95 ^o				0			Number of Rain Days	
Days of 100 ^o				0			9	
Days below 32 ^o				0			Historic Average	
							3.51	
							Deviation from Average	
							-1.35	
							Net Gain/loss (Rain - ET)	
							-2.89	

Year Cumulative	
Rain	ET
19.1	15.8
50.0	
23.2	
-4.2	
	3.3

May Marianna FAWN 6' Air Temps



May Avg Soil Temps Marianna

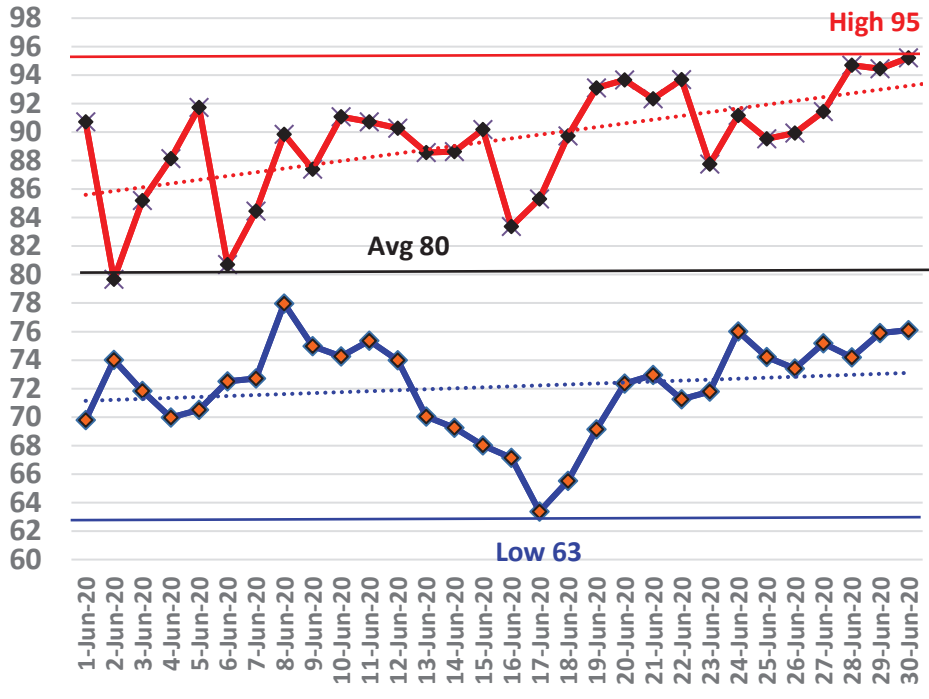


June Daily Weather Data

Date	Temperature						Precipitation	
	Air Temp 6 ft			Soil Temp 4 inch			Rain	Evapo Trans
	Avg	Min	Max	Avg	Min	Max	Inches	Inches
1-Jun-20	80	70	91	84	78	92	0.01	0.21
2-Jun-20	77	74	80	82	80	84	0.00	0.07
3-Jun-20	76	72	85	81	78	86	0.08	0.11
4-Jun-20	79	70	88	83	77	91	0.00	0.19
5-Jun-20	80	71	92	85	79	96	0.46	0.23
6-Jun-20	76	73	81	81	77	83	0.98	0.1
7-Jun-20	77	73	84	79	76	83	1.50	0.13
8-Jun-20	83	78	90	82	78	87	0.11	0.22
9-Jun-20	78	75	87	80	79	84	1.60	0.1
10-Jun-20	82	74	91	83	78	89	0.01	0.21
11-Jun-20	83	75	91	84	79	91	0.00	0.23
12-Jun-20	82	74	90	85	79	94	0.00	0.22
13-Jun-20	79	70	89	86	80	95	0.00	0.2
14-Jun-20	79	69	89	87	80	97	0.00	0.23
15-Jun-20	79	68	90	88	81	96	0.00	0.21
16-Jun-20	74	67	83	87	81	96	0.00	0.21
17-Jun-20	73	63	85	86	80	95	0.00	0.18
18-Jun-20	79	66	90	88	81	98	0.00	0.23
19-Jun-20	82	69	93	90	83	98	0.00	0.22
20-Jun-20	83	72	94	91	85	99	0.00	0.22
21-Jun-20	82	73	92	90	84	97	0.00	0.22
22-Jun-20	79	71	94	89	84	98	0.21	0.19
23-Jun-20	78	72	88	84	81	89	0.16	0.17
24-Jun-20	82	76	91	84	80	90	0.00	0.17
25-Jun-20	80	74	90	84	81	90	0.18	0.13
26-Jun-20	81	73	90	84	79	89	0.00	0.15
27-Jun-20	83	75	91	85	81	90	0.00	0.17
28-Jun-20	85	74	95	88	81	97	0.00	N/A
29-Jun-20	85	76	94	91	84	99	0.00	N/A
30-Jun-20	83	76	95	92	86	101	0.01	N/A
High			95			101		
Low		63			76			
Average	80	72	89	85	80	92		
				Total for Month			5.31	4.92
Days over 95 ^o				1	Number of Rain Days			12
Days of 100 ^o				0	Historic Average			4.95
Days below 32 ^o				0	Deviation from Average			0.36
				Net Gain/loss (Rain - ET)				0.39

Year Cumulative	
Rain	ET
24.4	20.7
62.0	
28.2	
-3.8	
	3.7

June Marianna FAWN 6' Air Temps

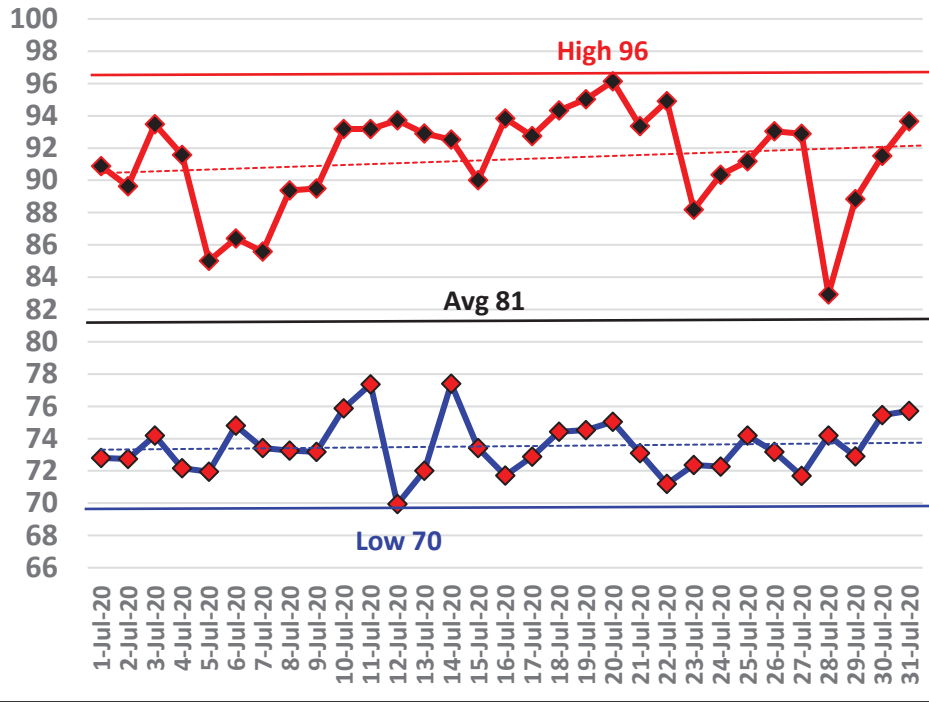


July Daily Weather Data

Temperature							Precipitation	
Date	Air Temp 6 ft			Soil Temp 4 inch			Rain	Evapo Trans
	Avg	Min	Max	Avg	Min	Max	Inches	Inches
1-Jul-20	79	73	91	88	85	94	0.17	0.10
2-Jul-20	81	73	90	87	81	95	0.00	0.00
3-Jul-20	81	74	93	90	84	99	0.02	0.01
4-Jul-20	79	72	92	89	83	98	0.00	0.00
5-Jul-20	77	72	85	86	84	90	0.72	0.23
6-Jul-20	79	75	86	84	81	89	0.16	0.14
7-Jul-20	78	73	86	83	81	86	0.23	0.09
8-Jul-20	79	73	89	83	79	90	0.12	0.11
9-Jul-20	81	73	89	85	80	91	0.00	0.00
10-Jul-20	82	76	93	85	82	91	0.75	0.48
11-Jul-20	85	77	93	86	82	91	0.00	0.00
12-Jul-20	81	70	94	85	80	92	0.26	0.13
13-Jul-20	81	72	93	86	81	92	0.00	0.00
14-Jul-20	83	77	93	87	83	93	0.00	0.00
15-Jul-20	80	73	90	87	84	93	0.00	0.00
16-Jul-20	81	72	94	87	82	94	0.01	0.01
17-Jul-20	83	73	93	88	83	95	0.00	0.00
18-Jul-20	84	74	94	90	85	96	0.00	0.00
19-Jul-20	84	75	95	90	85	96	0.00	0.00
20-Jul-20	83	75	96	90	86	97	0.01	0.01
21-Jul-20	82	73	93	90	85	96	0.00	0.00
22-Jul-20	80	71	95	90	84	100	0.07	0.03
23-Jul-20	77	72	88	85	82	91	0.75	0.32
24-Jul-20	81	72	90	84	80	91	0.00	0.00
25-Jul-20	82	74	91	87	81	94	0.00	0.00
26-Jul-20	82	73	93	88	81	97	0.00	0.00
27-Jul-20	80	72	93	88	82	97	0.00	0.00
28-Jul-20	77	74	83	84	81	87	0.66	0.31
29-Jul-20	79	73	89	83	79	88	0.07	0.06
30-Jul-20	83	75	92	85	80	92	0.00	0.00
31-Jul-20	84	76	94	88	81	97	0.00	0.00
High			96			100		
Low		70			79			
Average	81	74	91	87	82	93		
				Total for Month			4.00	2.03
Days over 95 ^o				2				
Days of 100 ^o				0				
Days below 32 ^o				0				
				Number of Rain Days			14	
				Historic Average			6.15	
				Deviation from Average			-2.15	
				Net Gain/loss (Rain - ET)				1.97

Year Cumulative	
Rain	ET
28.4	22.7
76.0	
34.3	
-5.9	
	5.6

July Marianna FAWN 6' Air Temps

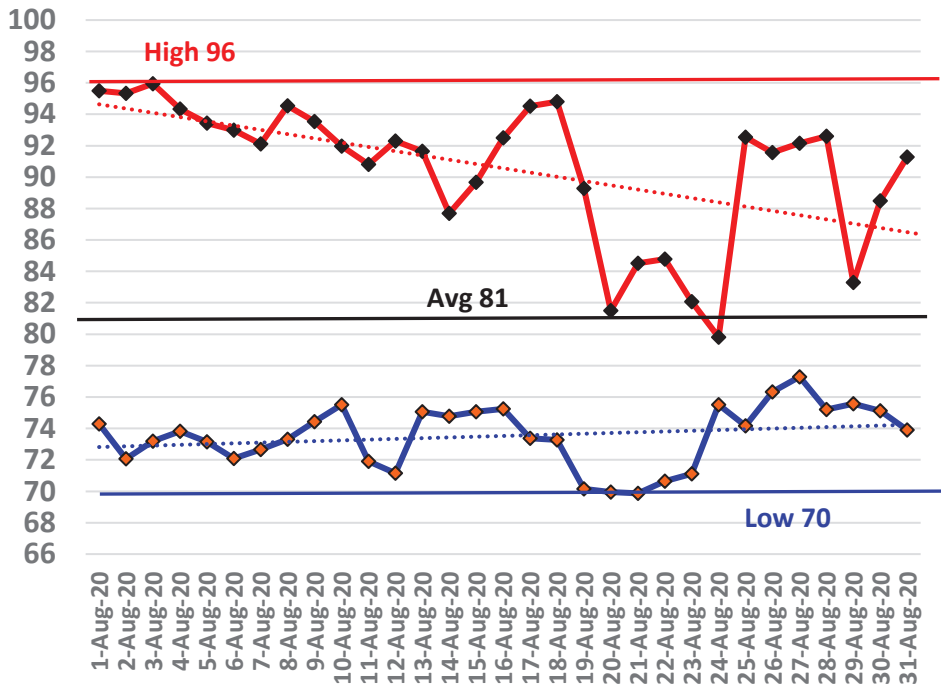


August Daily Weather Data

Date	Temperature						Precipitation	
	Air Temp 6 ft			Soil Temp 4 inch			Rain	Evapo Trans
	Avg	Min	Max	Avg	Min	Max	Inches	Inches
1-Aug-20	83	74	95	90	82	100	0.00	0.23
2-Aug-20	83	72	95	91	83	101	0.00	0.21
3-Aug-20	85	73	96	92	85	101	0.00	0.22
4-Aug-20	84	74	94	92	85	102	0.02	0.23
5-Aug-20	82	73	93	90	85	97	0.71	0.18
6-Aug-20	83	72	93	86	81	93	0.00	0.18
7-Aug-20	82	73	92	86	81	94	0.02	0.19
8-Aug-20	81	73	95	86	81	98	1.25	0.19
9-Aug-20	84	74	94	87	81	95	0.00	0.22
10-Aug-20	83	76	92	88	82	96	0.04	0.22
11-Aug-20	77	72	91	84	80	92	1.61	0.12
12-Aug-20	81	71	92	85	78	93	0.00	0.21
13-Aug-20	81	75	92	86	81	94	0.00	0.18
14-Aug-20	79	75	88	84	81	90	0.54	0.13
15-Aug-20	81	75	90	84	80	89	0.00	0.17
16-Aug-20	84	75	93	86	80	94	0.00	0.21
17-Aug-20	84	73	95	88	81	97	0.00	0.21
18-Aug-20	82	73	95	88	82	96	0.00	0.19
19-Aug-20	77	70	89	84	78	91	2.14	0.18
20-Aug-20	74	70	82	81	79	83	0.11	0.08
21-Aug-20	76	70	85	81	77	86	0.04	0.13
22-Aug-20	77	71	85	81	78	85	0.07	0.13
23-Aug-20	76	71	82	80	77	83	0.09	0.09
24-Aug-20	77	76	80	79	78	80	0.66	0.04
25-Aug-20	82	74	93	82	77	89	0.01	0.19
26-Aug-20	83	76	92	84	80	90	0.00	0.19
27-Aug-20	82	77	92	84	81	90	0.69	0.14
28-Aug-20	82	75	93	84	80	90	0.00	0.19
29-Aug-20	78	76	83	81	80	83	0.76	0.07
30-Aug-20	79	75	88	82	79	88	0.05	0.13
31-Aug-20	81	74	91	84	79	91	0.00	0.19
High			96			102		
Low		70			77			
Average	81	74	91	85	80	92		
				Total for Month			8.81	5.24
Days over 95 ⁰				3	Number of Rain Days			17
Days of 100 ⁰				0	Historic Average			5.26
Days below 32 ⁰				0	Deviation from Average			3.55
				Net Gain/loss (Rain - ET)				3.57

Year Cumulative	
Rain	ET
37.2	28.0
93.0	
39.6	
-2.4	
	9.2

August Marianna FAWN 6' Air Temps

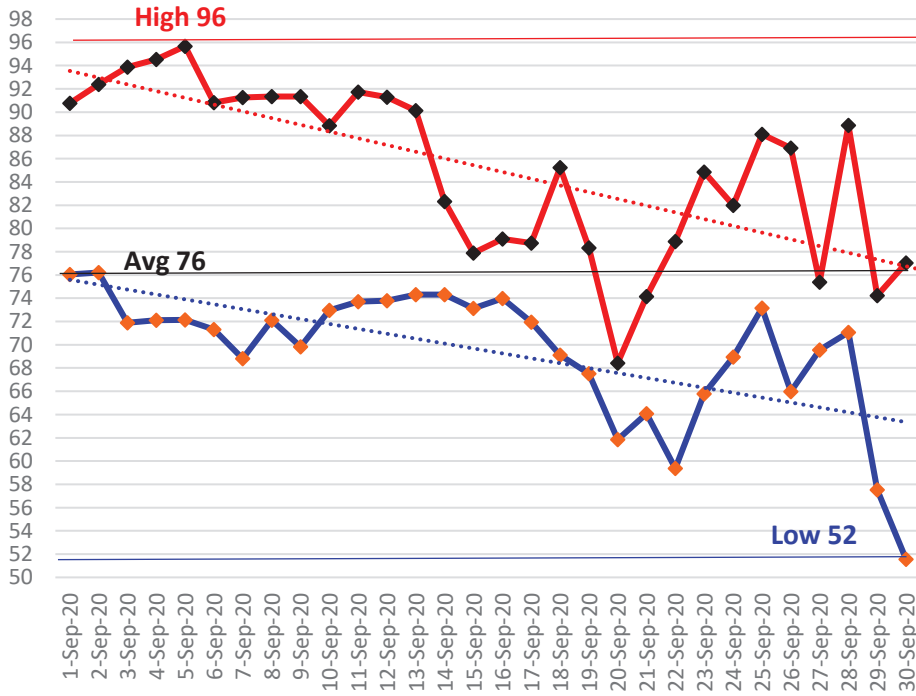


September Daily Weather Data

Temperature							Precipitation	
Date	Air Temp 6 ft			Soil Temp 4 inch			Rain	Evapo Trans
	Avg	Min	Max	Avg	Min	Max	Inches	Inches
1-Sep-20	82	76	91	85	81	90	0.00	0.17
2-Sep-20	83	76	92	86	82	93	0.00	0.2
3-Sep-20	82	72	94	87	82	94	0.00	0.19
4-Sep-20	83	72	95	88	82	94	0.00	0.19
5-Sep-20	84	72	96	88	83	95	0.00	0.2
6-Sep-20	81	71	91	87	82	93	0.00	0.18
7-Sep-20	80	69	91	87	82	93	0.00	0.17
8-Sep-20	80	72	91	87	83	93	0.00	0.17
9-Sep-20	80	70	91	88	82	94	0.00	0.17
10-Sep-20	78	73	89	86	83	91	1.18	0.12
11-Sep-20	79	74	92	85	81	91	0.27	0.15
12-Sep-20	80	74	91	84	81	89	0.04	0.16
13-Sep-20	80	74	90	84	81	89	0.43	0.14
14-Sep-20	78	74	82	81	79	82	0.54	0.06
15-Sep-20	76	73	78	78	77	79	1.43	0.04
16-Sep-20	76	74	79	76	75	77	7.04	0.04
17-Sep-20	75	72	79	76	75	78	0.02	0.08
18-Sep-20	76	69	85	79	74	84	0.00	0.13
19-Sep-20	73	68	78	78	76	80	0.00	0.09
20-Sep-20	66	62	68	74	73	75	0.09	0.06
21-Sep-20	68	64	74	73	70	76	0.00	0.08
22-Sep-20	69	59	79	73	69	77	0.00	0.11
23-Sep-20	73	66	85	76	71	82	0.00	0.14
24-Sep-20	75	69	82	76	73	80	0.65	0.09
25-Sep-20	79	73	88	80	76	86	0.16	0.15
26-Sep-20	76	66	87	80	75	85	0.00	0.13
27-Sep-20	73	70	75	77	75	78	1.58	0.05
28-Sep-20	78	71	89	79	75	85	0.00	0.13
29-Sep-20	66	58	74	74	69	78	0.01	0.07
30-Sep-20	64	52	77	71	65	79	0.00	0.11
High			96			95		
Low		52			65			
Average	76	69	85	81	77	85		
Total for Month							13.44	3.77
Days over 95 ⁰								
Days of 100 ⁰								
Days below 32 ⁰								
Days of 90+								
Number of Rain Days							13.00	
Historic Average							4.31	
Deviation from Average							9.13	
Net Gain/loss (Rain - ET)								9.67

Year Cumulative	
Rain	ET
50.6	31.8
106.0	
43.9	
6.7	
	18.9

September Marianna FAWN 6' Air Temps

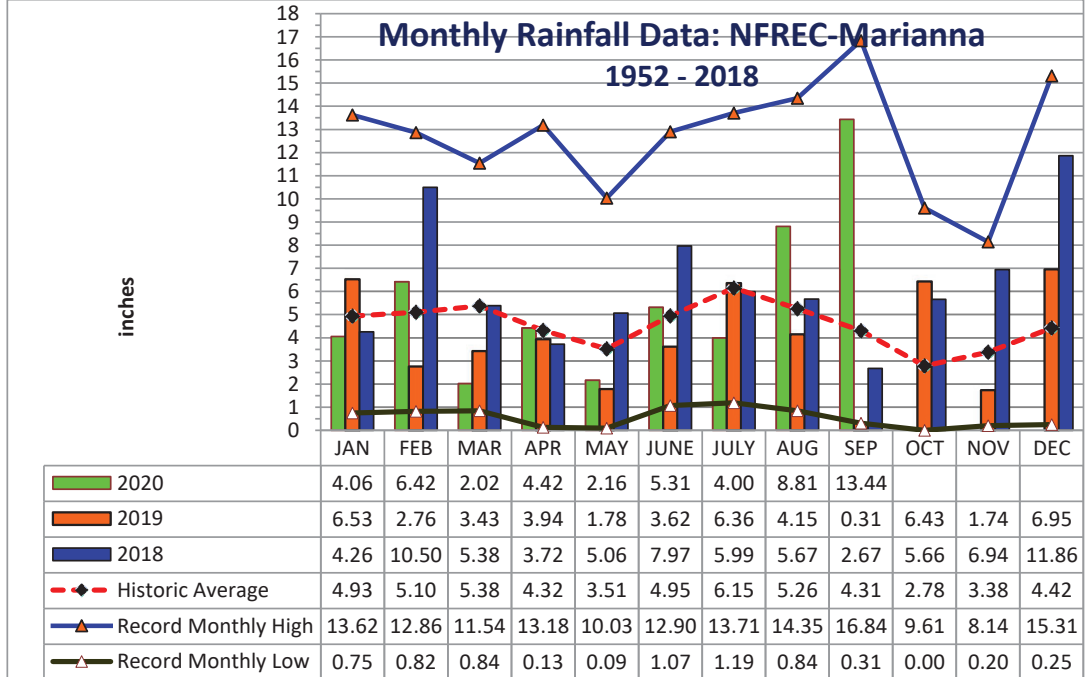




YEAR	JAN	FEB	MAR	APR	MAY	JUNE	JULY	AUG	SEP	OCT	NOV	DEC	TOTAL
1952	1.14	8.88	4.48	2.11	5.13	1.12	5.95	8.81	3.09	0.65	3.26	3.42	48.04
1953	4.84	7.26	3.03	8.43	2.43	3.97	6.84	1.63	6.33	0.65	4.09	15.31	64.81
1954	1.33	3.49	2.62	2.58	1.96	3.46	3.28	2.84	1.72	1.30	2.66	1.44	28.68
1955	3.66	1.83	0.84	5.80	3.03	1.62	6.75	3.75	2.44	2.10	0.72	0.77	33.31
1956	3.59	5.18	3.77	2.04	4.03	5.45	8.52	4.09	6.44	5.08	0.28	3.34	51.81
1957	0.75	2.65	5.17	5.74	4.60	5.75	9.83	5.91	16.84	1.31	6.24	2.22	67.01
1958	4.48	3.61	4.73	7.22	5.57	6.00	8.39	3.45	3.68	1.88	1.75	2.32	53.08
1959	3.67	7.06	8.50	5.73	6.95	3.77	4.83	3.67	3.07	7.93	0.21	1.53	56.92
1960	3.36	7.08	3.41	6.80	3.20	4.75	4.97	4.80	6.22	2.00	0.47	2.35	49.41
1961	4.23	4.15	3.64	5.57	3.97	4.41	3.99	11.09	2.60	0.00	2.84	6.23	52.72
1962	1.72	2.80	8.13	3.28	2.86	3.67	7.97	6.07	3.07	2.82	5.16	1.67	49.22
1963	7.31	3.02	3.18	1.36	3.50	7.99	5.16	1.50	5.25	0.01	4.22	6.05	48.55
1964	10.80	6.81	6.41	9.47	2.23	5.68	9.22	3.07	7.47	9.61	3.35	6.44	80.56
1965	2.63	6.09	5.51	3.96	0.18	9.60	3.26	4.18	4.48	3.41	1.81	3.60	48.71
1966	5.56	9.84	2.57	0.77	5.80	3.13	3.25	9.82	5.09	1.41	2.03	4.62	53.89
1967	8.27	3.32	2.19	0.13	2.61	7.02	6.49	3.58	1.40	1.86	2.40	7.98	47.25
1968	1.28	2.30	3.40	2.50	3.39	1.18	5.45	4.61	2.99	1.41	5.11	5.34	38.96
1969	1.68	3.49	7.08	4.54	3.01	1.71	13.18	3.05	5.64	1.50	1.22	3.80	49.90
1970	4.16	9.20	8.86	1.83	1.81	3.69	5.04	8.01	0.49	4.40	2.21	3.13	52.83
1971	1.97	6.11	7.15	3.17	3.03	3.85	5.20	6.76	2.47	1.84	1.94	3.70	47.19
1972	3.62	6.03	6.41	0.38	2.87	8.89	3.78	5.39	2.14	2.44	3.29	3.77	49.01
1973	8.14	7.71	8.38	7.60	6.87	3.63	11.12	4.51	5.40	0.27	3.64	5.33	72.60
1974	5.24	5.80	2.66	3.40	3.78	1.56	3.29	8.01	4.68	0.84	2.14	2.89	44.29
1975	10.21	6.36	4.91	10.35	3.97	4.10	13.71	5.40	3.81	4.35	2.89	3.28	73.34
1976	6.99	1.50	4.89	1.87	8.89	3.08	3.03	3.47	5.47	6.18	5.72	3.97	55.06
1977	3.47	1.81	6.52	0.88	0.60	6.36	3.55	5.22	9.83	2.59	8.14	4.19	53.16
1978	7.28	3.28	7.25	4.65	6.73	3.79	7.25	4.90	0.98	0.20	6.01	3.65	55.97
1979	7.30	7.78	3.26	7.75	6.22	1.31	7.49	6.30	11.51	0.53	4.47	2.84	66.76
1980	6.58	2.96	11.54	9.29	4.50	3.50	5.87	2.53	4.56	4.71	1.52	0.25	57.81
1981	1.70	5.32	5.94	3.03	2.73	4.74	4.02	2.53	2.44	1.75	0.85	4.94	39.99
1982	4.17	5.61	2.91	5.93	5.39	3.00	7.51	4.42	6.00	2.65	2.34	9.14	59.07
1983	4.92	6.84	8.53	7.88	2.27	5.66	1.19	2.53	8.97	3.52	5.90	7.65	65.86
1984	5.49	5.01	8.62	6.29	2.50	5.31	12.01	5.76	0.32	1.60	1.63	0.80	55.34
1985	4.60	4.46	2.60	1.18	4.44	5.68	3.68	5.58	1.42	7.42	7.91	5.34	54.31
1986	5.68	10.27	3.21	0.83	2.26	1.85	2.75	4.12	2.35	2.22	4.40	5.68	45.62
1987	8.62	5.52	7.23	0.40	4.46	5.43	5.51	4.18	2.27	0.06	4.02	0.81	48.51
1988	5.57	6.40	8.41	2.69	0.28	1.07	5.43	3.98	5.53	1.98	3.28	1.23	45.85
1989	1.59	2.74	4.96	3.63	7.01	12.90	11.19	3.06	3.36	7.20	4.71	5.45	67.80
1990	5.26	4.57	4.55	3.00	3.22	4.02	3.65	2.91	0.85	1.34	0.93	3.42	37.72
1991	13.62	3.44	9.00	5.32	10.03	5.30	10.67	3.89	1.53	1.17	1.60	3.00	68.57
1992	8.37	6.29	7.92	2.50	1.41	11.16	8.69	6.72	3.19	2.08	7.40	2.93	68.66
1993	12.00	3.38	7.41	1.50	1.60	4.18	6.68	3.89	3.44	2.90	2.27	3.63	52.88
1994	8.64	2.53	6.25	4.34	1.82	11.41	10.95	9.08	6.44	7.62	2.53	3.79	75.40
1995	5.23	3.13	4.29	4.35	3.90	5.56	3.02	6.16	0.86	7.51	4.12	1.78	49.91
1996	3.64	5.99	8.47	5.76	1.50	5.43	2.83	14.28	5.32	3.81	2.01	3.65	62.69

YEAR	JAN	FEB	MAR	APR	MAY	JUNE	JULY	AUG	SEP	OCT	NOV	DEC	TOTAL
1997	6.68	5.29	2.63	10.08	5.91	6.41	5.73	4.65	3.78	2.10	6.85	8.44	68.55
1998	6.28	8.30	6.11	2.24	1.45	2.35	4.37	2.20	16.31	0.30	2.05	1.98	53.94
1999	6.95	2.90	3.61	1.50	6.71	8.99	8.64	4.02	4.33	3.13	3.56	2.50	56.84
2000	3.78	4.96	4.48	4.05	0.09	4.00	3.40	7.15	7.20	0.71	4.43	3.21	47.46
2001	2.16	0.82	10.00	1.99	2.52	8.24	4.66	8.21	1.90	1.51	1.70	0.78	44.49
2002	3.82	2.44	5.51	5.78	2.19	3.45	10.34	3.30	11.83	7.36	7.76	5.99	69.77
2003	2.30	7.03	8.18	4.89	3.11	6.11	7.84	5.99	2.39	3.58	3.04	3.12	57.58
2004	3.19	7.66	0.90	4.37	1.19	6.66	4.92	1.67	10.01	3.89	4.97	3.25	52.68
2005	3.33	2.31	9.05	7.04	1.67	7.47	9.44	11.71	1.62	0.03	3.15	4.81	61.63
2006	4.82	3.90	0.91	1.61	4.97	1.99	2.22	5.18	0.91	3.09	3.41	5.43	38.44
2007	5.99	2.45	1.10	0.99	1.57	3.97	3.94	4.18	1.27	4.79	1.89	4.03	36.17
2008	4.26	9.00	9.11	4.28	1.46	8.64	4.02	9.29	0.74	5.11	3.18	8.23	67.32
2009	2.33	3.26	7.11	7.73	9.17	2.78	3.88	3.19	5.22	3.39	2.35	9.57	59.98
2010	7.53	3.99	3.41	4.01	5.09	2.92	2.31	0.84	1.33	0.22	5.82	0.63	38.10
2011	4.33	4.04	5.00	0.92	0.78	1.66	5.11	1.87	2.26	1.84	1.94	3.75	33.50
2012	3.79	7.49	5.94	3.17	1.42	7.35	5.05	14.35	5.17	1.75	1.30	4.10	60.88
2013	1.05	12.86	2.99	3.54	0.64	3.72	13.39	13.17	2.14	1.96	3.91	4.44	63.81
2014	2.15	4.99	7.70	13.18	4.03	2.32	5.69	2.55	6.03	2.03	5.93	5.32	61.92
2015	3.4	3.8	2.17	9.52	3.55	4.04	4.85	2.75	4.15	1.00	7.33	8.67	55.23
2016	4.8	3.51	8.15	4.94	1.74	3.49	2.79	7.28	4.19	0.22	0.8	12.33	54.24
2017	7.28	3.78	2.11	2.12	4.28	11.53	6.82	4.47	3.75	0.97	0.2	2.76	50.07
2018	4.26	10.50	5.38	3.72	5.06	7.97	5.99	5.67	2.67	5.66	6.94	11.86	75.68
2019	6.53	2.76	3.43	3.94	1.78	3.62	6.36	4.15	0.31	6.43	1.74	6.95	48.00
2020	4.06	6.42	2.02	4.42	2.16	5.31	4.00	8.81	13.44				50.64

Deviation from the Average Monthly Rainfall													
Inches	-0.87	1.32	-3.36	0.10	-1.35	0.36	-2.15	3.55	9.13				6.74
Monthly Average Rainfall, 1952-2019													
AVG.	4.93	5.10	5.38	4.32	3.51	4.95	6.15	5.26	4.31	2.78	3.38	4.42	54.49
% of Annual Rainfall Occuring each Month													
	9.1%	9.4%	9.9%	7.9%	6.4%	9.1%	11.3%	9.6%	7.9%	5.1%	6.2%	8.1%	
Record High/Low for the Month													
LOW	0.75	0.82	0.84	0.13	0.09	1.07	1.19	0.84	0.31	0.00	0.20	0.25	28.68
HIGH	13.62	12.86	11.54	13.18	10.03	12.90	13.71	14.35	16.84	9.61	8.14	15.31	80.56



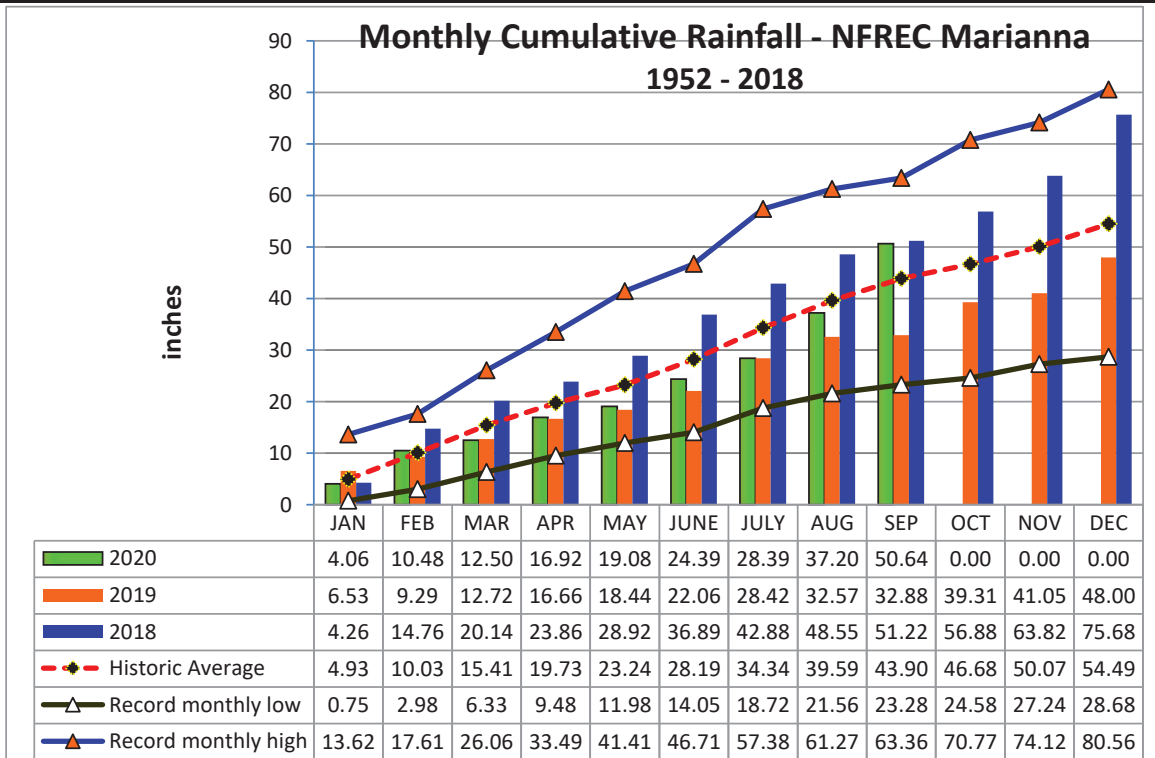
Jackson County
Monthly Cumulative Rainfall, 1952 -2020
North Florida Research & Education Center Marianna,
FL



YEAR	JAN	FEB	MAR	APR	MAY	JUNE	JULY	AUG	SEP	OCT	NOV	DEC
1952	1.14	10.02	14.50	16.61	21.74	22.86	28.81	37.62	40.71	41.36	44.62	48.04
1953	4.84	12.10	15.13	23.56	25.99	29.96	36.80	38.43	44.76	45.41	49.50	64.81
1954	1.33	4.82	7.44	10.02	11.98	15.44	18.72	21.56	23.28	24.58	27.24	28.68
1955	3.66	5.49	6.33	12.13	15.16	16.78	23.53	27.28	29.72	31.82	32.54	33.31
1956	3.59	8.77	12.54	14.58	18.61	24.06	32.58	36.67	43.11	48.19	48.47	51.81
1957	0.75	3.40	8.57	14.31	18.91	24.66	34.49	40.40	57.24	58.55	64.79	67.01
1958	4.48	8.09	12.82	20.04	25.61	31.61	40.00	43.45	47.13	49.01	50.76	53.08
1959	3.67	10.73	19.23	24.96	31.91	35.68	40.51	44.18	47.25	55.18	55.39	56.92
1960	3.36	10.44	13.85	20.65	23.85	28.60	33.57	38.37	44.59	46.59	47.06	49.41
1961	4.23	8.38	12.02	17.59	21.56	25.97	29.96	41.05	43.65	43.65	46.49	52.72
1962	1.72	4.52	12.65	15.93	18.79	22.46	30.43	36.50	39.57	42.39	47.55	49.22
1963	7.31	10.33	13.51	14.87	18.37	26.36	31.52	33.02	38.27	38.28	42.50	48.55
1964	10.80	17.61	24.02	33.49	35.72	41.40	50.62	53.69	61.16	70.77	74.12	80.56
1965	2.63	8.72	14.23	18.19	18.37	27.97	31.23	35.41	39.89	43.30	45.11	48.71
1966	5.56	15.40	17.97	18.74	24.54	27.67	30.92	40.74	45.83	47.24	49.27	53.89
1967	8.27	11.59	13.78	13.91	16.52	23.54	30.03	33.61	35.01	36.87	39.27	47.25
1968	1.28	3.58	6.98	9.48	12.87	14.05	19.50	24.11	27.10	28.51	33.62	38.96
1969	1.68	5.17	12.25	16.79	19.80	21.51	34.69	37.74	43.38	44.88	46.10	49.90
1970	4.16	13.36	22.22	24.05	25.86	29.55	34.59	42.60	43.09	47.49	49.70	52.83
1971	1.97	8.08	15.23	18.40	21.43	25.28	30.48	37.24	39.71	41.55	43.49	47.19
1972	3.62	9.65	16.06	16.44	19.31	28.20	31.98	37.37	39.51	41.95	45.24	49.01
1973	8.14	15.85	24.23	31.83	38.70	42.33	53.45	57.96	63.36	63.63	67.27	72.60
1974	5.24	11.04	13.70	17.10	20.88	22.44	25.73	33.74	38.42	39.26	41.40	44.29
1975	10.21	16.57	21.48	31.83	35.80	39.90	53.61	59.01	62.82	67.17	70.06	73.34
1976	6.99	8.49	13.38	15.25	24.14	27.22	30.25	33.72	39.19	45.37	51.09	55.06
1977	3.47	5.28	11.80	12.68	13.28	19.64	23.19	28.41	38.24	40.83	48.97	53.16
1978	7.28	10.56	17.81	22.46	29.19	32.98	40.23	45.13	46.11	46.31	52.32	55.97
1979	7.30	15.08	18.34	26.09	32.31	33.62	41.11	47.41	58.92	59.45	63.92	66.76
1980	6.58	9.54	21.08	30.37	34.87	38.37	44.24	46.77	51.33	56.04	57.56	57.81
1981	1.70	7.02	12.96	15.99	18.72	23.46	27.48	30.01	32.45	34.20	35.05	39.99
1982	4.17	9.78	12.69	18.62	24.01	27.01	34.52	38.94	44.94	47.59	49.93	59.07
1983	4.92	11.76	20.29	28.17	30.44	36.10	37.29	39.82	48.79	52.31	58.21	65.86
1984	5.49	10.50	19.12	25.41	27.91	33.22	45.23	50.99	51.31	52.91	54.54	55.34
1985	4.60	9.06	11.66	12.84	17.28	22.96	26.64	32.22	33.64	41.06	48.97	54.31
1986	5.68	15.95	19.16	19.99	22.25	24.10	26.85	30.97	33.32	35.54	39.94	45.62
1987	8.62	14.14	21.37	21.77	26.23	31.66	37.17	41.35	43.62	43.68	47.70	48.51
1988	5.57	11.97	20.38	23.07	23.35	24.42	29.85	33.83	39.36	41.34	44.62	45.85
1989	1.59	4.33	9.29	12.92	19.93	32.83	44.02	47.08	50.44	57.64	62.35	67.80
1990	5.26	9.83	14.38	17.38	20.60	24.62	28.27	31.18	32.03	33.37	34.30	37.72
1991	13.62	17.06	26.06	31.38	41.41	46.71	57.38	61.27	62.80	63.97	65.57	68.57
1992	8.37	14.66	22.58	25.08	26.49	37.65	46.34	53.06	56.25	58.33	65.73	68.66
1993	12.00	15.38	22.79	24.29	25.89	30.07	36.75	40.64	44.08	46.98	49.25	52.88
1994	8.64	11.17	17.42	21.76	23.58	34.99	45.94	55.02	61.46	69.08	71.61	75.40
1995	5.23	8.36	12.65	17.00	20.90	26.46	29.48	35.64	36.50	44.01	48.13	49.91
1996	3.64	9.63	18.10	23.86	25.36	30.79	33.62	47.90	53.22	57.03	59.04	62.69

YEAR	JAN	FEB	MAR	APR	MAY	JUNE	JULY	AUG	SEP	OCT	NOV	DEC
1997	6.68	11.97	14.60	24.68	30.59	37.00	42.73	47.38	51.16	53.26	60.11	68.55
1998	6.28	14.58	20.69	22.93	24.38	26.73	31.10	33.30	49.61	49.91	51.96	53.94
1999	6.95	9.85	13.46	14.96	21.67	30.66	39.30	43.32	47.65	50.78	54.34	56.84
2000	3.78	8.74	13.22	17.27	17.36	21.36	24.76	31.91	39.11	39.82	44.25	47.46
2001	2.16	2.98	12.98	14.97	17.49	25.73	30.39	38.60	40.50	42.01	43.71	44.49
2002	3.82	6.26	11.77	17.55	19.74	23.19	33.53	36.83	48.66	56.02	63.78	69.77
2003	2.30	9.33	17.51	22.40	25.51	31.62	39.46	45.45	47.84	51.42	54.46	57.58
2004	3.19	10.85	11.75	16.12	17.31	23.97	28.89	30.56	40.57	44.46	49.43	52.68
2005	3.33	5.64	14.69	21.73	23.40	30.87	40.31	52.02	53.64	53.67	56.82	61.63
2006	4.82	8.72	9.63	11.24	16.21	18.20	20.42	25.60	26.51	29.60	33.01	38.44
2007	5.99	8.44	9.54	10.53	12.10	16.07	20.01	24.19	25.46	30.25	32.14	36.17
2008	4.26	13.26	22.37	26.65	28.11	36.75	40.77	50.06	50.80	55.91	59.09	67.32
2009	2.33	5.59	12.70	20.43	29.60	32.38	36.26	39.45	44.67	48.06	50.41	59.98
2010	7.53	11.52	14.93	18.94	24.03	26.95	29.26	30.10	31.43	31.65	37.47	38.10
2011	4.33	8.37	13.37	14.29	15.07	16.73	21.84	23.71	25.97	27.81	29.75	33.50
2012	3.79	11.28	17.22	20.39	21.81	29.16	34.21	48.56	53.73	55.48	56.78	60.88
2013	1.05	13.91	16.90	20.44	21.08	24.80	38.19	51.36	53.50	55.46	59.37	63.81
2014	2.15	7.14	14.84	28.02	32.05	34.37	40.06	42.61	48.64	50.67	56.60	61.92
2015	3.40	7.20	9.37	18.89	22.44	26.48	31.33	34.08	38.23	39.23	46.56	55.23
2016	4.80	8.31	16.46	21.40	23.14	26.63	29.42	36.70	40.89	41.11	41.91	54.24
2017	7.28	11.06	13.17	15.29	19.57	31.10	37.92	42.39	46.14	47.11	47.31	50.07
2018	4.26	14.76	20.14	23.86	28.92	36.89	42.88	48.55	51.22	56.88	63.82	75.68
2019	6.53	9.29	12.72	16.66	18.44	22.06	28.42	32.57	32.88	39.31	41.05	48.00
2020	4.06	10.48	12.50	16.92	19.08	24.39	28.39	37.20	50.64	0.00	0.00	0.00

Deviation from the Average Accumulation												
Inches	-0.87	0.45	-2.91	-2.81	-4.16	-3.80	-5.95	-2.39	6.74	#VALUE!	#VALUE!	#VALUE!
Average Accumulation, 1952-2019												
Inches	4.93	10.03	15.41	19.73	23.24	28.19	34.34	39.59	43.90	46.68	50.07	54.49
Record High/Low Accumulation												
LOW	0.75	2.98	6.33	9.48	11.98	14.05	18.72	21.56	23.28	24.58	27.24	28.68
HIGH	13.62	17.61	26.06	33.49	41.41	46.71	57.38	61.27	63.36	70.77	74.12	80.56



2020 UF/IFAS FAWN Panhandle Weather Station Summary

FAWN Station	Data	Jan	Feb	Mar	Apr	May	June	July	Aug	Sept	Total
Monticello	Rain	1.9	4.8	2.4	4.7	1.8	15.1	7.9	6.6	9.9	55.1
	Hist Avg	4.5	4.6	6.1	4.1	3.4	5.7	7.0	6.9	5.4	47.7
	Deviation	-2.6	0.2	-3.7	0.6	-1.6	9.4	0.9	-0.3	4.5	7.4
Quincy	Rain	1.9	6.2	2.7	4.8	4.1	11.5	5.4	8.5	15.0	60.2
	Hist Avg	5.0	4.3	5.6	3.7	4.2	5.2	6.3	6.2	4.1	44.6
	Deviation	-3.1	1.9	-2.9	1.1	-0.1	6.3	-0.9	2.3	10.9	15.6
Carrabelle	Rain	2.0	4.0	0.8	3.6	4.5	4.8	4.8	9.0	11.5	45.0
	Hist Avg	3.8	3.7	4.9	3.0	2.7	5.3	7.3	7.9	7.3	45.9
	Deviation	-1.8	0.3	-4.1	0.6	1.8	-0.5	-2.5	1.1	4.2	-0.9
Marianna	Rain	4.1	6.4	2.0	4.4	2.2	5.3	4.0	8.8	13.4	50.6
	Hist Avg	4.9	5.1	5.4	4.3	3.5	4.9	6.2	5.3	4.3	43.9
	Deviation	-0.9	1.3	-3.4	0.1	-1.4	0.4	-2.2	3.6	9.1	6.7
DeFuniak	Rain	4.9	9.0	2.5	9.2	2.5	4.8	9.4	8.3	15.7	66.3
	Hist Avg	4.9	5.4	5.6	3.9	4.5	7.1	7.2	6.3	5.7	50.7
	Deviation	0.0	3.5	-3.1	5.3	-2.0	-2.3	2.2	2.0	10.0	15.6
Jay	Rain	6.4	7.0	1.6	2.2	3.6	8.3	10.3	5.3	20.0	64.5
	Hist Avg	5.5	5.3	6.6	4.8	4.8	5.8	7.0	6.2	5.5	51.5
	Deviation	0.9	1.7	-5.0	-2.7	-1.2	2.5	3.3	-0.9	14.5	13.0
6 Station Average		3.5	6.2	2.0	4.8	3.1	8.3	7.0	7.7	14.3	57.0
6 Station Historic Average		4.8	4.7	5.7	4.0	3.9	5.7	6.8	6.5	5.4	47.4
Deviation from Avg		-1.3	1.5	-3.7	0.8	-0.7	2.6	0.1	1.3	8.9	9.6

**Panhandle UF/IFAS FAWN
2020 September Rainfall Totals**

