



## Jackson County 2020 Weather Data

*69 Years of Weather Data Recorded at the UF/IFAS Marianna North Florida Research and Education Center*



**Doug Mayo**  
Jackson County Extension Director

1952-2008 Rainfall Data compiled by  
Ed Jowers, Emeritus County Extension Director

Data provided by Florida Automated Weather Station (FAWN)  
UF/IFAS North Florida Research and Education Center  
Greenwood, Florida



<http://fawn.ifas.ufl.edu/>

Tower Name	Tower Number	Latitude Degree, Minutes	Latitude Degrees, Minutes, Seconds	Latitude Degrees Decimal	Longitude Degree, Minutes	Longitude Degrees, Minutes, Seconds	Longitude Degrees Decimal	Elevation Feet
Marianna	130.00	N 30°51.000'	N 30°50'00.00"	N 30.85000°	-85°09.910'	-85°09'54.60"	-85.16516°	115'

## 2020 UF/IFAS FAWN Marianna Weather Summary

Month	6' Air Temp			Soil Temp			Rainfall Inches	Dev from Hist Avg
	High	Low	Avg	High	Low	Avg		
January	82	29	56	72	43	58	4.1	-0.9
February	80	33	58	74	46	60	6.4	1.3
March	89	38	69	88	50	71	2.0	-3.4
April	89	48	69	88	61	74	4.4	0.1
May	92	51	75	92	64	79	2.2	-1.4
June	95	63	80	101	76	85	5.3	0.4
July	96	70	81	100	79	87	4.0	-2.2
August	96	70	81	102	77	85	8.8	3.6
September	96	52	76	95	65	81	13.4	9.1
October	90	49	72	85	63	75	3.2	0.4
2020	96	29	72	102	43	76	53.8	7.1

Data: UF/IFAS Florida Automated Weather Network Marianna Station

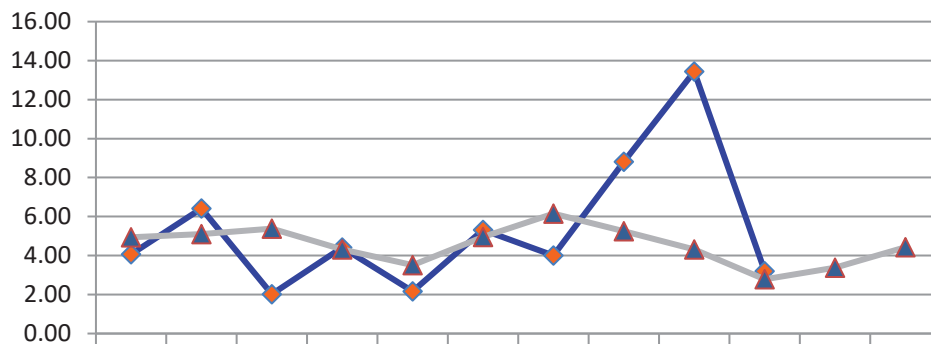
Total days <32°

2

Total days >95°

7

### Monthly Rainfall @ Marianna FAWN



	JAN	FEB	MAR	APR	MAY	JUNE	JULY	AUG	SEP	OCT	NOV	DEC
2020	4.06	6.42	2.02	4.42	2.16	5.31	4.00	8.81	13.44	3.19		
Historic Avg	4.93	5.10	5.38	4.32	3.51	4.95	6.15	5.26	4.31	2.78	3.38	4.42

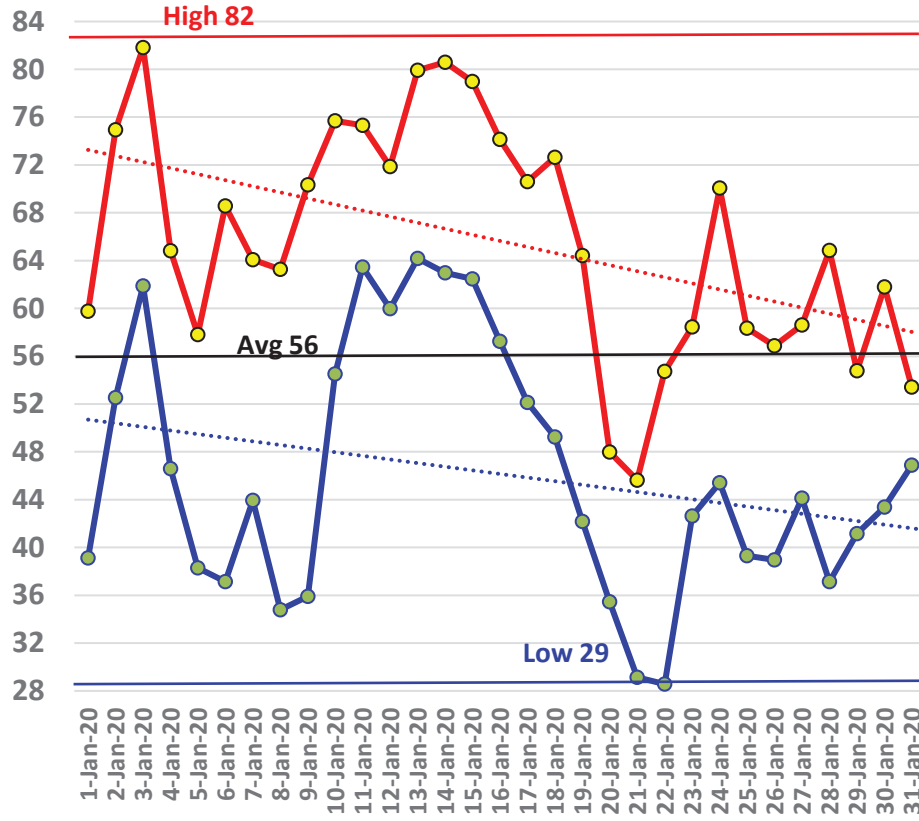
◆ 2020    ▲ Historic Avg

# January Daily Weather Data

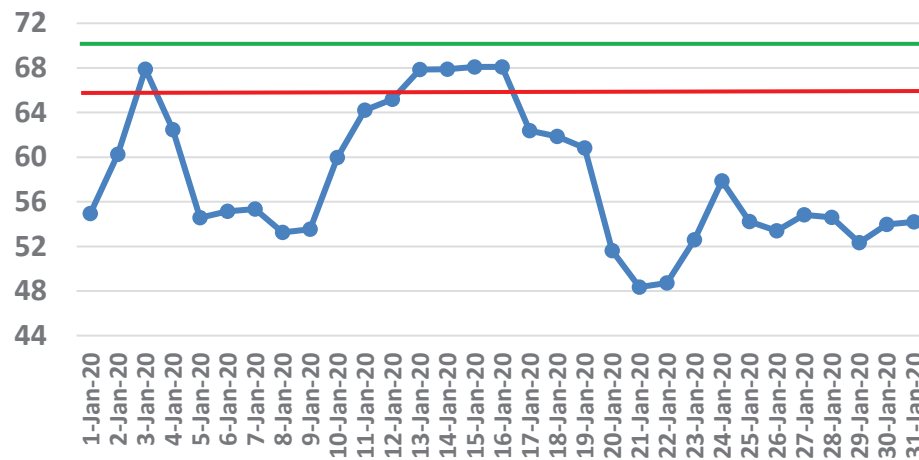
Temperature							Precipitation			
Date	Air Temp 6 ft			Soil Temp 4 inch			Rain	Evapo Trans		
	Avg	Min	Max	Avg	Min	Max	Inches	Inches		
1-Jan-20	49	39	60	55	51	60	0.00	0.04		
2-Jan-20	65	53	75	60	56	65	0.00	0.06		
3-Jan-20	73	62	82	68	65	71	0.90	0.07		
4-Jan-20	59	47	65	62	55	66	0.05	0.05		
5-Jan-20	47	38	58	55	50	60	0.00	0.04		
6-Jan-20	52	37	69	55	49	62	0.00	0.05		
7-Jan-20	54	44	64	55	52	60	0.00	0.05		
8-Jan-20	48	35	63	53	48	59	0.00	0.04		
9-Jan-20	54	36	70	54	47	59	0.00	0.06		
10-Jan-20	66	55	76	60	55	65	0.00	0.06		
11-Jan-20	70	63	75	64	62	67	1.81	0.05		
12-Jan-20	66	60	72	65	62	68	0.00	0.05		
13-Jan-20	71	64	80	68	66	72	0.00	0.06		
14-Jan-20	69	63	81	68	65	72	0.01	0.06		
15-Jan-20	70	62	79	68	65	72	0.00	0.06		
16-Jan-20	69	57	74	68	63	70	0.00	0.06		
17-Jan-20	59	52	71	62	60	66	0.00	0.06		
18-Jan-20	61	49	73	62	58	66	0.43	0.06		
19-Jan-20	55	42	64	61	53	64	0.01	0.06		
20-Jan-20	41	35	48	52	48	55	0.00	0.04		
21-Jan-20	36	29	46	48	44	53	0.00	0.04		
22-Jan-20	43	29	55	49	43	54	0.00	0.05		
23-Jan-20	51	43	58	53	50	56	0.21	0.05		
24-Jan-20	59	45	70	58	55	63	0.06	0.06		
25-Jan-20	49	39	58	54	50	59	0.00	0.05		
26-Jan-20	48	39	57	53	50	56	0.05	0.05		
27-Jan-20	51	44	59	55	53	59	0.07	0.05		
28-Jan-20	50	37	65	55	49	61	0.00	0.06		
29-Jan-20	47	41	55	52	51	55	0.32	0.05		
30-Jan-20	52	43	62	54	49	60	0.00	0.06		
31-Jan-20	50	47	53	54	53	55	0.14	0.04		
<b>High</b>			<b>82</b>			<b>72</b>				
<b>Low</b>		<b>29</b>			<b>43</b>					
<b>Average</b>	<b>56</b>	46	66	<b>58</b>	54	62				
Days over 95 <sup>o</sup>			0	<b>Total for Month</b>			<b>4.06</b>	1.64	4.1	1.6
Days below 32 <sup>o</sup>			2	<b>Number of Rain Days</b>			12		12.0	
				<b>Historic Average</b>			4.93		4.9	
				<b>Deviation from Average</b>			-0.87		-0.9	
				<b>Net Gain/loss (Rain - ET)</b>				<b>2.42</b>		2.4

Year Cumulative  
Rain      ET  
4.1      1.6  
12.0  
4.9  
-0.9  
2.4

## Jan Marianna FAWN 6' Air Temps



## January Avg Soil Temps Marianna

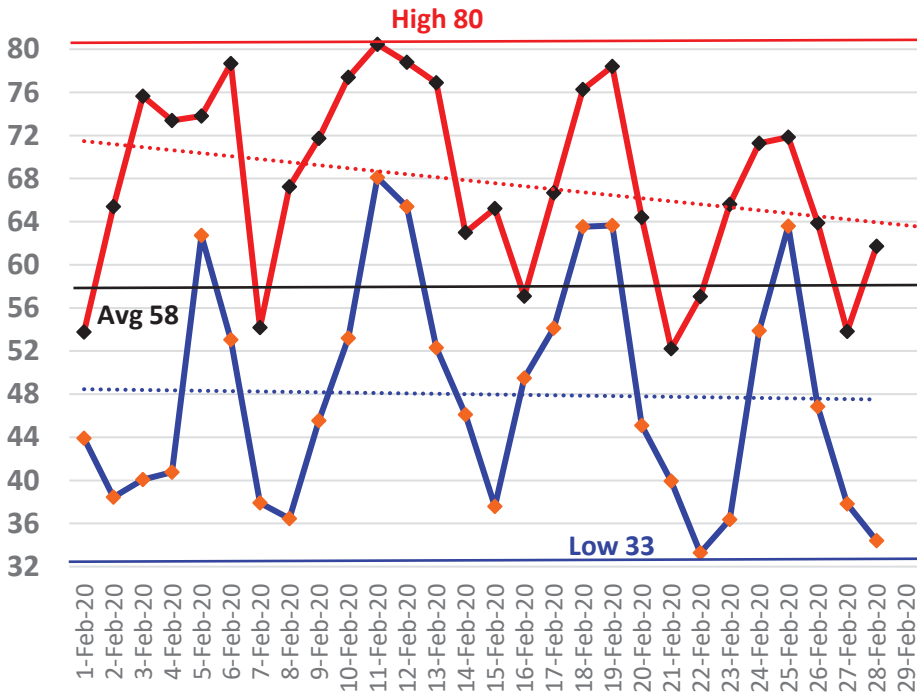


## February Daily Weather Data

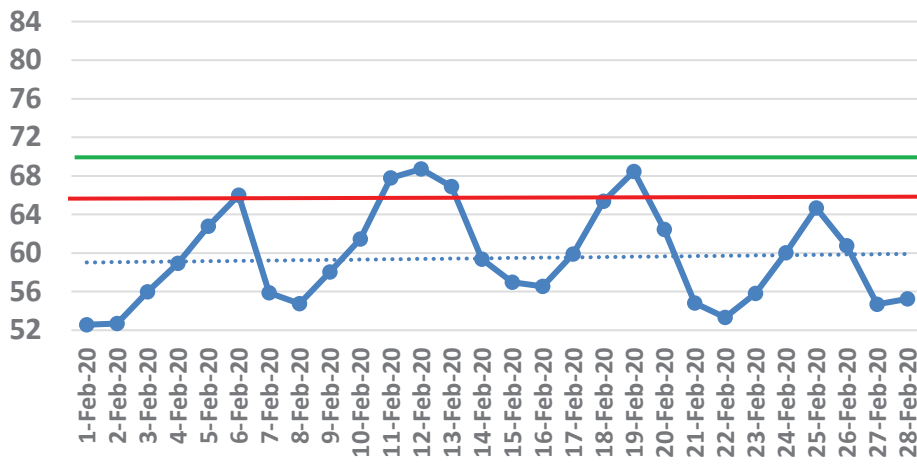
Date	Temperature						Precipitation	
	Air Temp 6 ft			Soil Temp 4 inch			Rain	Evapo Trans
	Avg	Min	Max	Avg	Min	Max	Inches	Inches
1-Feb-20	48	44	54	53	50	54	0.00	0.05
2-Feb-20	52	38	65	53	47	59	0.00	0.07
3-Feb-20	57	40	76	56	49	64	0.00	0.08
4-Feb-20	63	41	73	59	54	64	0.06	0.07
5-Feb-20	68	63	74	63	60	65	0.62	0.06
6-Feb-20	71	53	79	66	61	68	2.04	0.08
7-Feb-20	46	38	54	56	51	61	0.00	0.06
8-Feb-20	52	36	67	55	48	62	0.00	0.07
9-Feb-20	57	46	72	58	52	65	0.00	0.08
10-Feb-20	65	53	77	61	55	68	0.00	0.09
11-Feb-20	73	68	80	68	64	73	0.00	0.08
12-Feb-20	72	65	79	69	66	73	0.00	0.08
13-Feb-20	66	52	77	67	60	69	1.09	0.07
14-Feb-20	53	46	63	59	55	65	0.01	0.08
15-Feb-20	51	38	65	57	50	65	0.00	0.08
16-Feb-20	53	49	57	57	55	58	0.45	0.04
17-Feb-20	60	54	67	60	57	64	0.01	0.06
18-Feb-20	69	64	76	65	62	70	0.01	0.07
19-Feb-20	70	64	78	68	65	74	0.01	0.08
20-Feb-20	56	45	64	62	55	66	0.68	0.06
21-Feb-20	46	40	52	55	51	59	0.00	0.06
22-Feb-20	44	33	57	53	46	62	0.00	0.07
23-Feb-20	52	36	66	56	48	64	0.00	0.07
24-Feb-20	63	54	71	60	56	64	1.27	0.07
25-Feb-20	67	64	72	65	62	68	0.17	0.06
26-Feb-20	58	47	64	61	54	64	0.00	0.06
27-Feb-20	45	38	54	55	48	63	0.00	0.07
28-Feb-20	48	34	62	55	47	65	0.00	0.08
29-Feb-20	53	42	66	57	49	66	0.00	0.09
<b>High</b>			<b>80</b>			<b>74</b>		
<b>Low</b>		<b>33</b>			<b>46</b>			
<b>Average</b>	<b>58</b>	48	68	<b>60</b>	54	65		
Days over 95 <sup>0</sup>	0			<b>Total for Month</b>			<b>6.42</b>	2.04
				<b>Number of Rain Days</b>			12	
Days below 32 <sup>0</sup>	0			<b>Historic Average</b>			5.10	
				<b>Deviation from Average</b>			1.32	
				<b>Net Gain/loss (Rain - ET)</b>				<b>4.38</b>

<b>Year Cumulative</b>	
<b>Rain</b>	<b>ET</b>
10.5	3.7
24.0	
10.0	
0.4	
	6.8

## February Marianna FAWN 6' Air Temps



## February Avg Soil Temps Marianna

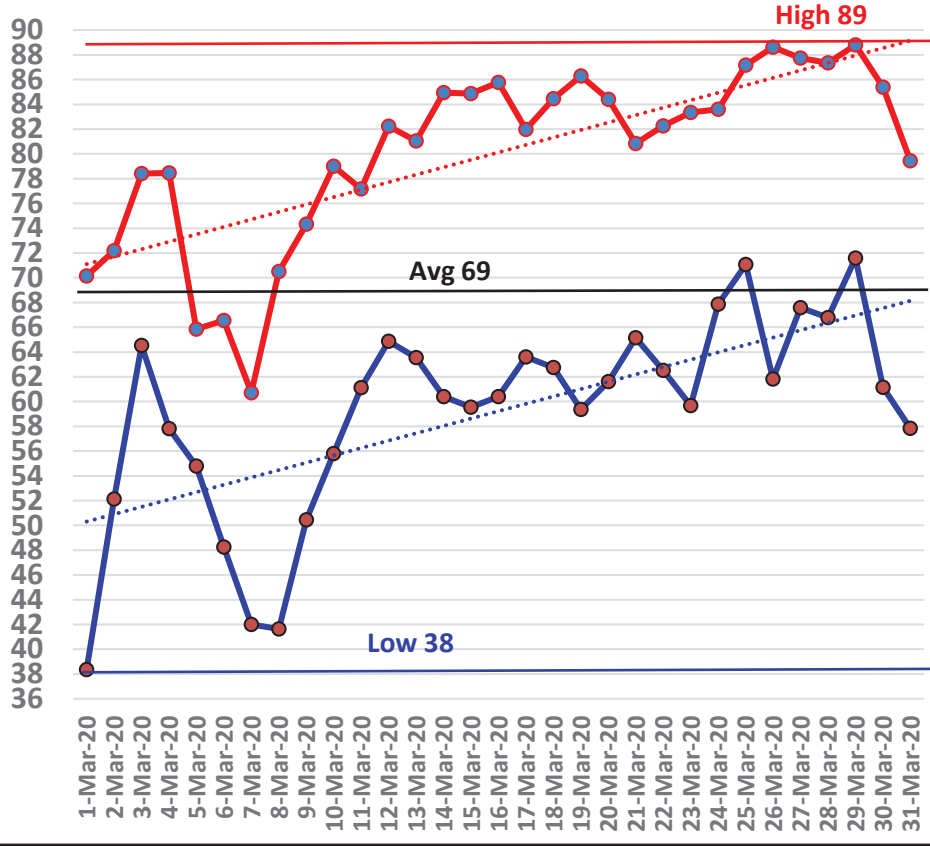


# March Daily Weather Data

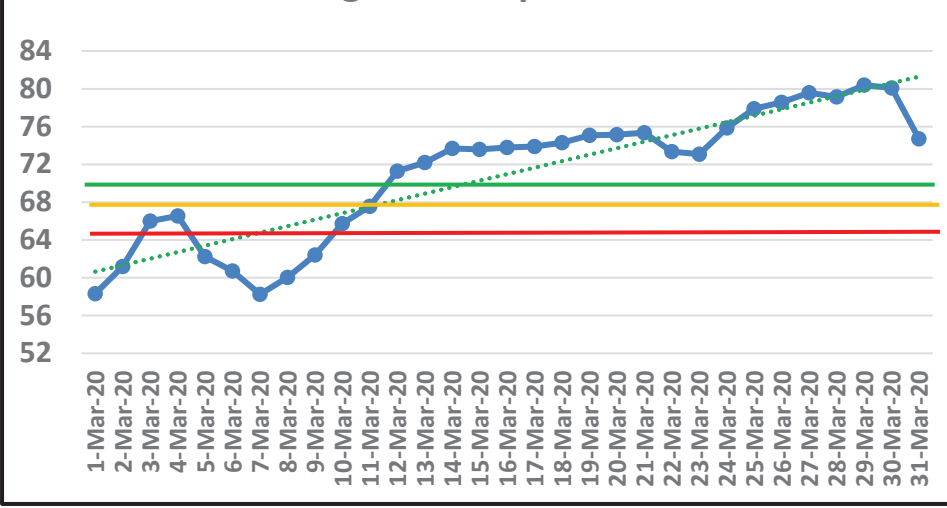
Date	Temperature						Precipitation		
	Air Temp 6 ft			Soil Temp 4 inch			Rain	Evapo Trans	
	Avg	Min	Max	Avg	Min	Max	Inches	Inches	
1-Mar-20	55	38	70	58	50	67	0.00	0.09	
2-Mar-20	63	52	72	61	56	66	0.12	0.08	
3-Mar-20	71	65	78	66	62	70	0.00	0.09	
4-Mar-20	66	58	78	67	63	70	0.74	0.07	
5-Mar-20	59	55	66	62	61	65	0.35	0.05	
6-Mar-20	58	48	67	61	56	67	0.00	0.1	
7-Mar-20	50	42	61	58	51	68	0.00	N/A	
8-Mar-20	56	42	71	60	52	70	0.00	0.09	
9-Mar-20	62	50	74	62	56	70	0.00	0.09	
10-Mar-20	66	56	79	66	60	75	0.00	0.1	
11-Mar-20	68	61	77	68	64	74	0.00	0.08	
12-Mar-20	71	65	82	71	65	80	0.00	0.12	
13-Mar-20	71	64	81	72	67	80	0.00	0.1	
14-Mar-20	71	60	85	74	67	83	0.00	0.12	
15-Mar-20	72	60	85	74	67	81	0.00	0.11	
16-Mar-20	73	60	86	74	67	81	0.00	0.11	
17-Mar-20	72	64	82	74	69	80	0.02	0.1	
18-Mar-20	73	63	84	74	69	81	0.00	0.11	
19-Mar-20	72	59	86	75	68	84	0.00	0.13	
20-Mar-20	73	62	84	75	70	82	0.00	0.11	
21-Mar-20	72	65	81	75	71	82	0.46	0.1	
22-Mar-20	71	63	82	73	68	80	0.00	0.11	
23-Mar-20	71	60	83	73	67	81	0.00	0.11	
24-Mar-20	74	68	84	76	71	83	0.00	0.13	
25-Mar-20	78	71	87	78	72	86	0.00	0.15	
26-Mar-20	75	62	89	79	71	88	0.00	0.14	
27-Mar-20	76	68	88	80	74	88	0.00	0.14	
28-Mar-20	75	67	87	79	74	87	0.00	0.13	
29-Mar-20	79	72	89	80	75	88	0.00	0.13	
30-Mar-20	75	61	85	80	73	88	0.00	0.13	
31-Mar-20	69	58	79	75	68	78	0.33	0.09	
<b>High</b>			<b>89</b>			<b>88</b>			
<b>Low</b>		<b>38</b>			<b>50</b>				
<b>Average</b>	<b>69</b>	59	80	<b>71</b>	65	78			
Days over 95 <sup>0</sup>				0		<b>Total for Month</b>		<b>2.02</b>	3.21
Days below 32 <sup>0</sup>				0		<b>Number of Rain Days</b>		6	
						<b>Historic Average</b>		5.38	
						<b>Deviation from Average</b>		-3.36	
						<b>Net Gain/loss (Rain - ET)</b>		<b>-1.19</b>	

<b>Year Cumulative</b>	
<b>Rain</b>	<b>ET</b>
12.5	6.9
30.0	
15.4	
-2.9	
	5.6

## March Marianna FAWN 6' Air Temps



## March Avg Soil Temps Marianna



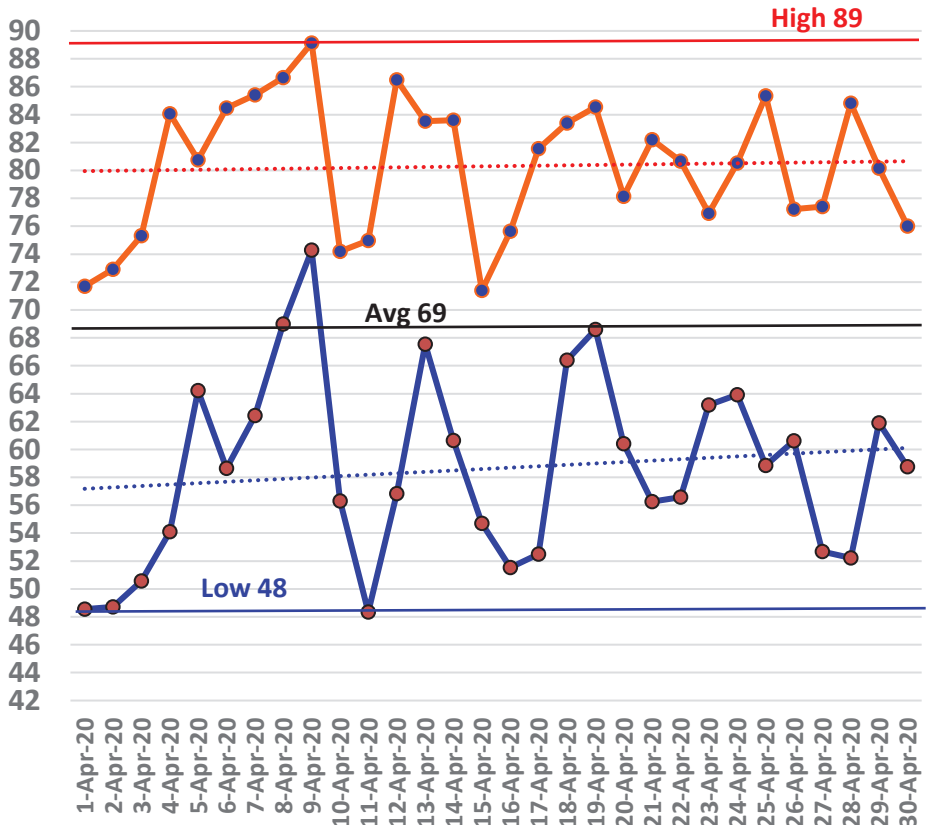


## April Daily Weather Data

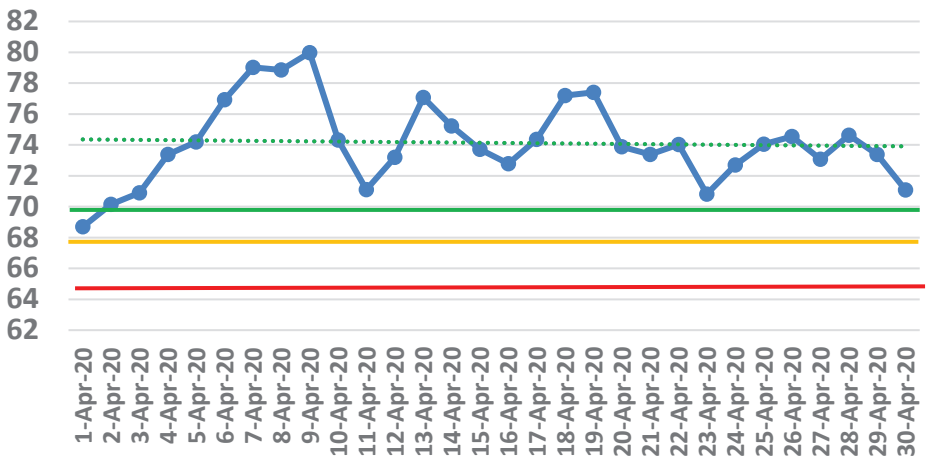
Date	Temperature						Precipitation		
	Air Temp 6 ft			Soil Temp 4 inch			Rain	Evapo Trans	
	Avg	Min	Max	Avg	Min	Max	Inches	Inches	
1-Apr-20	60	49	72	69	61	78	0.00	0.12	
2-Apr-20	60	49	73	70	62	80	0.00	0.12	
3-Apr-20	64	51	75	71	65	79	0.00	0.1	
4-Apr-20	69	54	84	73	66	83	0.00	0.13	
5-Apr-20	71	64	81	74	70	80	0.02	0.1	
6-Apr-20	72	59	84	77	69	87	0.00	0.14	
7-Apr-20	74	62	85	79	72	88	0.00	0.14	
8-Apr-20	76	69	87	79	75	85	0.31	0.11	
9-Apr-20	80	74	89	80	75	88	0.00	0.16	
10-Apr-20	67	56	74	74	68	79	0.20	0.11	
11-Apr-20	62	48	75	71	63	81	0.00	0.12	
12-Apr-20	73	57	87	73	67	79	0.00	0.12	
13-Apr-20	77	68	84	77	73	83	0.55	0.14	
14-Apr-20	72	61	84	75	68	84	0.00	0.13	
15-Apr-20	64	55	71	74	68	80	0.01	0.12	
16-Apr-20	63	52	76	73	64	83	0.00	0.14	
17-Apr-20	68	53	82	74	66	84	0.00	0.14	
18-Apr-20	74	66	83	77	73	83	0.01	0.12	
19-Apr-20	76	69	85	77	74	82	0.04	0.11	
20-Apr-20	69	60	78	74	69	79	0.85	0.13	
21-Apr-20	70	56	82	73	66	81	0.00	0.15	
22-Apr-20	70	57	81	74	67	82	0.00	0.14	
23-Apr-20	67	63	77	71	68	74	1.75	0.06	
24-Apr-20	71	64	81	73	68	81	0.00	0.16	
25-Apr-20	73	59	85	74	68	82	0.00	0.16	
26-Apr-20	69	61	77	75	69	81	0.00	0.15	
27-Apr-20	65	53	77	73	66	82	0.00	0.15	
28-Apr-20	69	52	85	75	67	84	0.00	0.15	
29-Apr-20	70	62	80	73	71	76	0.67	0.09	
30-Apr-20	67	59	76	71	67	76	0.01	0.14	
<b>High</b>			<b>89</b>			<b>88</b>			
<b>Low</b>		<b>48</b>			<b>61</b>				
<b>Average</b>	<b>69</b>	59	80	<b>74</b>	68	81			
Days over 95 <sup>0</sup>				0		<b>Total for Month</b>		<b>4.42</b>	3.85
Days below 32 <sup>0</sup>				0		<b>Number of Rain Days</b>		11	
						<b>Historic Average</b>		4.32	
						<b>Deviation from Average</b>		0.10	
						<b>Net Gain/loss (Rain - ET)</b>			<b>0.57</b>

<b>Year Cumulative</b>	
<b>Rain</b>	<b>ET</b>
16.9	10.7
41.0	
19.7	
-2.8	
	6.2

## April Marianna FAWN 6' Air Temps



## April Avg Soil Temps Marianna

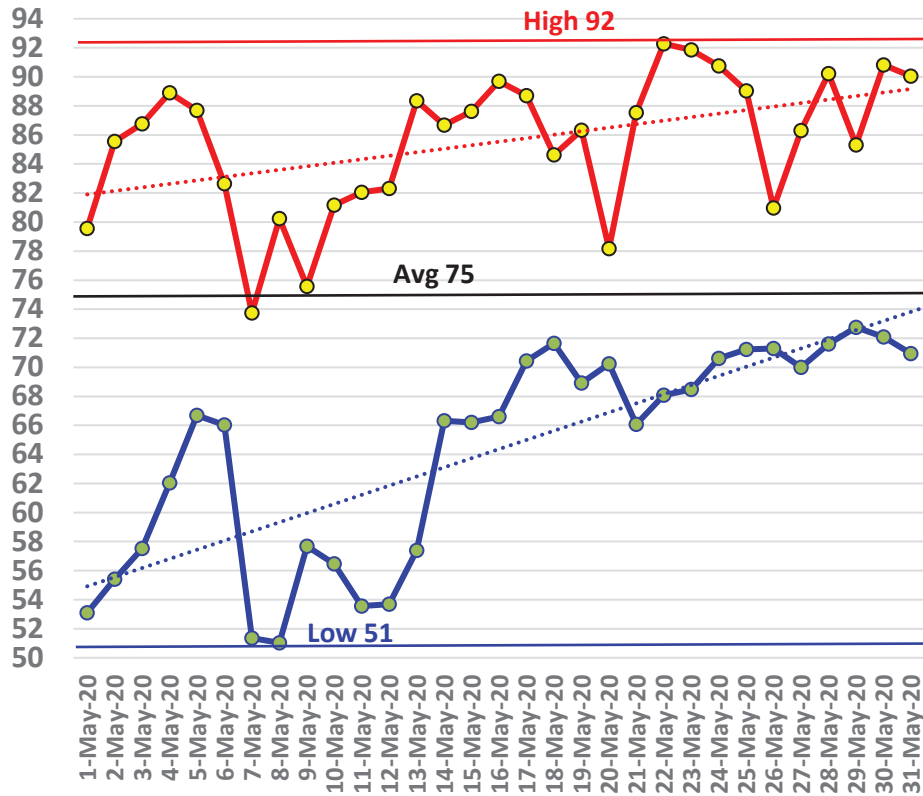


# May Daily Weather Data

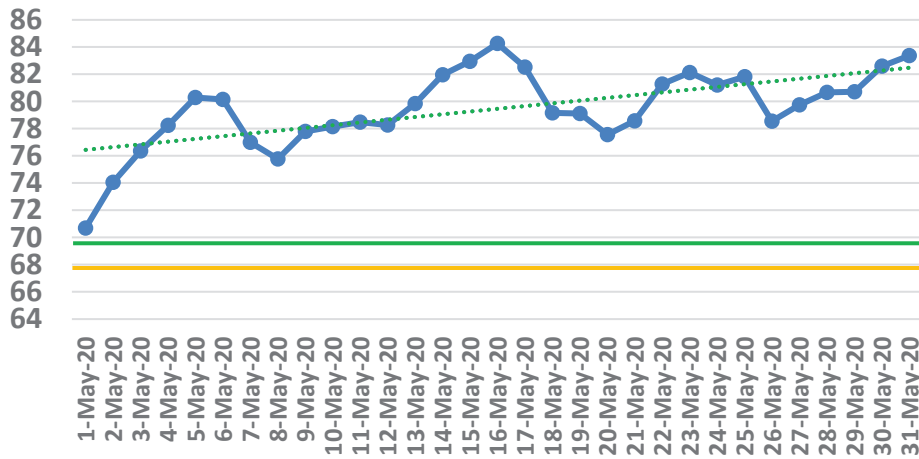
Temperature							Precipitation	
Date	Air Temp 6 ft			Soil Temp 4 inch			Rain	Evapo Trans
	Avg	Min	Max	Avg	Min	Max	Inches	Inches
1-May-20	67	53	80	71	64	79	0.00	0.15
2-May-20	71	55	86	74	66	83	0.00	0.16
3-May-20	72	58	87	76	69	85	0.00	0.16
4-May-20	74	62	89	78	72	87	0.00	0.17
5-May-20	77	67	88	80	75	87	0.00	0.17
6-May-20	74	66	83	80	76	86	0.00	0.17
7-May-20	63	51	74	77	71	84	0.00	0.14
8-May-20	68	51	80	76	70	82	0.00	0.14
9-May-20	67	58	76	78	73	84	0.00	0.15
10-May-20	68	56	81	78	72	86	0.00	0.15
11-May-20	70	54	82	78	72	86	0.00	0.16
12-May-20	68	54	82	78	71	86	0.03	0.15
13-May-20	74	57	88	80	73	88	0.00	0.2
14-May-20	77	66	87	82	76	89	0.00	0.22
15-May-20	77	66	88	83	77	90	0.00	0.21
16-May-20	79	67	90	84	78	92	0.00	0.21
17-May-20	76	70	89	83	79	89	0.66	0.16
18-May-20	76	72	85	79	77	84	0.13	0.15
19-May-20	77	69	86	79	74	86	0.00	0.22
20-May-20	74	70	78	78	76	80	0.14	0.1
21-May-20	75	66	88	79	74	85	0.00	0.16
22-May-20	79	68	92	81	75	89	0.00	0.2
23-May-20	77	68	92	82	76	92	0.21	0.19
24-May-20	80	71	91	81	77	87	0.00	0.19
25-May-20	78	71	89	82	77	89	0.07	0.18
26-May-20	75	71	81	79	77	80	0.03	0.08
27-May-20	76	70	86	80	76	87	0.57	0.15
28-May-20	79	72	90	81	76	87	0.00	0.18
29-May-20	78	73	85	81	77	85	0.32	0.16
30-May-20	81	72	91	83	77	89	0.00	0.22
31-May-20	81	71	90	83	78	91	0	N/A
<b>High</b>			<b>92</b>			<b>92</b>		
<b>Low</b>		<b>51</b>			<b>64</b>			
<b>Average</b>	<b>75</b>	64	86	<b>79</b>	74	86		
				<b>Total for Month</b>			<b>2.16</b>	5.05
Days over 95 <sup>o</sup>				0			<b>Number of Rain Days</b>	
Days of 100 <sup>o</sup>				0			9	
Days below 32 <sup>o</sup>				0			<b>Historic Average</b>	
							3.51	
							<b>Deviation from Average</b>	
							-1.35	
							<b>Net Gain/loss (Rain - ET)</b>	
							-2.89	

<b>Year Cumulative</b>	
<b>Rain</b>	<b>ET</b>
19.1	15.8
50.0	
23.2	
-4.2	
	3.3

## May Marianna FAWN 6' Air Temps



## May Avg Soil Temps Marianna

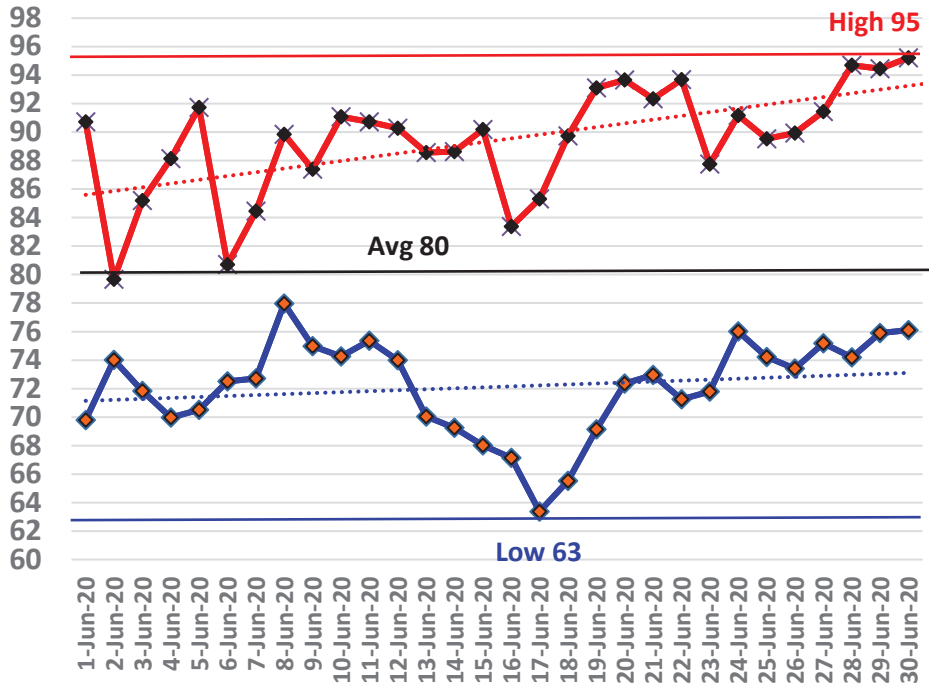


## June Daily Weather Data

Date	Temperature						Precipitation	
	Air Temp 6 ft			Soil Temp 4 inch			Rain	Evapo Trans
	Avg	Min	Max	Avg	Min	Max	Inches	Inches
1-Jun-20	80	70	91	84	78	92	0.01	0.21
2-Jun-20	77	74	80	82	80	84	0.00	0.07
3-Jun-20	76	72	85	81	78	86	0.08	0.11
4-Jun-20	79	70	88	83	77	91	0.00	0.19
5-Jun-20	80	71	92	85	79	96	0.46	0.23
6-Jun-20	76	73	81	81	77	83	0.98	0.1
7-Jun-20	77	73	84	79	76	83	1.50	0.13
8-Jun-20	83	78	90	82	78	87	0.11	0.22
9-Jun-20	78	75	87	80	79	84	1.60	0.1
10-Jun-20	82	74	91	83	78	89	0.01	0.21
11-Jun-20	83	75	91	84	79	91	0.00	0.23
12-Jun-20	82	74	90	85	79	94	0.00	0.22
13-Jun-20	79	70	89	86	80	95	0.00	0.2
14-Jun-20	79	69	89	87	80	97	0.00	0.23
15-Jun-20	79	68	90	88	81	96	0.00	0.21
16-Jun-20	74	67	83	87	81	96	0.00	0.21
17-Jun-20	73	63	85	86	80	95	0.00	0.18
18-Jun-20	79	66	90	88	81	98	0.00	0.23
19-Jun-20	82	69	93	90	83	98	0.00	0.22
20-Jun-20	83	72	94	91	85	99	0.00	0.22
21-Jun-20	82	73	92	90	84	97	0.00	0.22
22-Jun-20	79	71	94	89	84	98	0.21	0.19
23-Jun-20	78	72	88	84	81	89	0.16	0.17
24-Jun-20	82	76	91	84	80	90	0.00	0.17
25-Jun-20	80	74	90	84	81	90	0.18	0.13
26-Jun-20	81	73	90	84	79	89	0.00	0.15
27-Jun-20	83	75	91	85	81	90	0.00	0.17
28-Jun-20	85	74	95	88	81	97	0.00	N/A
29-Jun-20	85	76	94	91	84	99	0.00	N/A
30-Jun-20	83	76	95	92	86	101	0.01	N/A
<b>High</b>			<b>95</b>			<b>101</b>		
<b>Low</b>		<b>63</b>			<b>76</b>			
<b>Average</b>	<b>80</b>	72	89	<b>85</b>	80	92		
				<b>Total for Month</b>			<b>5.31</b>	4.92
Days over 95 <sup>o</sup>				1			<b>Number of Rain Days</b>	
Days of 100 <sup>o</sup>				0			12	
Days below 32 <sup>o</sup>				0			<b>Historic Average</b>	
							4.95	
							<b>Deviation from Average</b>	
							0.36	
							<b>Net Gain/loss (Rain - ET)</b>	
							<b>0.39</b>	

<b>Year Cumulative</b>	
<b>Rain</b>	<b>ET</b>
24.4	20.7
62.0	
28.2	
-3.8	
	3.7

# June Marianna FAWN 6' Air Temps

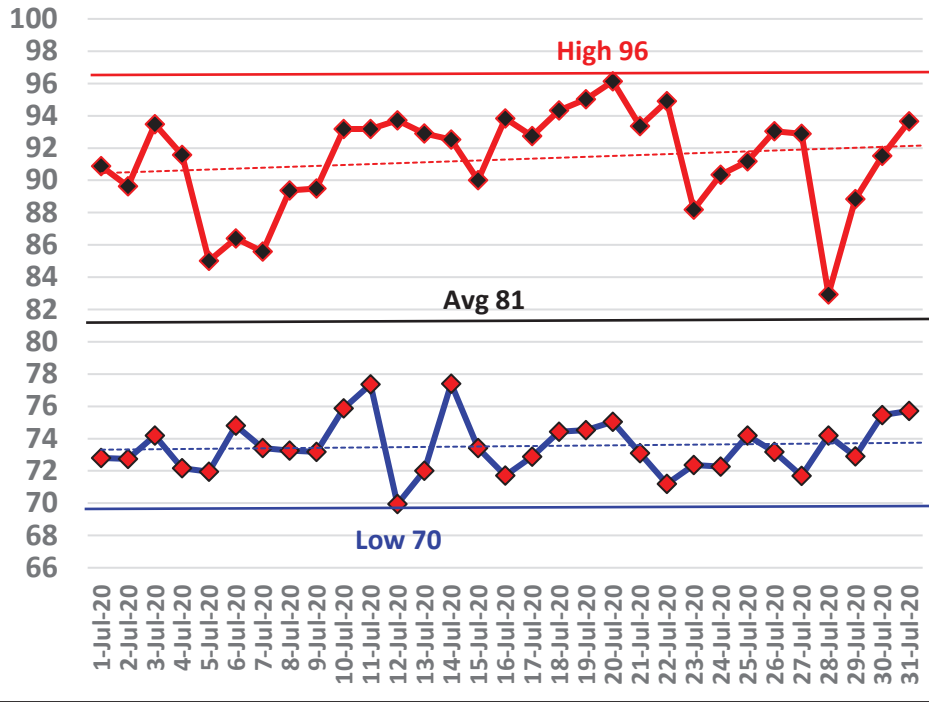


## July Daily Weather Data

Date	Temperature						Precipitation	
	Air Temp 6 ft			Soil Temp 4 inch			Rain	Evapo Trans
	Avg	Min	Max	Avg	Min	Max	Inches	Inches
1-Jul-20	79	73	91	88	85	94	0.17	0.10
2-Jul-20	81	73	90	87	81	95	0.00	0.00
3-Jul-20	81	74	93	90	84	99	0.02	0.01
4-Jul-20	79	72	92	89	83	98	0.00	0.00
5-Jul-20	77	72	85	86	84	90	0.72	0.23
6-Jul-20	79	75	86	84	81	89	0.16	0.14
7-Jul-20	78	73	86	83	81	86	0.23	0.09
8-Jul-20	79	73	89	83	79	90	0.12	0.11
9-Jul-20	81	73	89	85	80	91	0.00	0.00
10-Jul-20	82	76	93	85	82	91	0.75	0.48
11-Jul-20	85	77	93	86	82	91	0.00	0.00
12-Jul-20	81	70	94	85	80	92	0.26	0.13
13-Jul-20	81	72	93	86	81	92	0.00	0.00
14-Jul-20	83	77	93	87	83	93	0.00	0.00
15-Jul-20	80	73	90	87	84	93	0.00	0.00
16-Jul-20	81	72	94	87	82	94	0.01	0.01
17-Jul-20	83	73	93	88	83	95	0.00	0.00
18-Jul-20	84	74	94	90	85	96	0.00	0.00
19-Jul-20	84	75	95	90	85	96	0.00	0.00
20-Jul-20	83	75	96	90	86	97	0.01	0.01
21-Jul-20	82	73	93	90	85	96	0.00	0.00
22-Jul-20	80	71	95	90	84	100	0.07	0.03
23-Jul-20	77	72	88	85	82	91	0.75	0.32
24-Jul-20	81	72	90	84	80	91	0.00	0.00
25-Jul-20	82	74	91	87	81	94	0.00	0.00
26-Jul-20	82	73	93	88	81	97	0.00	0.00
27-Jul-20	80	72	93	88	82	97	0.00	0.00
28-Jul-20	77	74	83	84	81	87	0.66	0.31
29-Jul-20	79	73	89	83	79	88	0.07	0.06
30-Jul-20	83	75	92	85	80	92	0.00	0.00
31-Jul-20	84	76	94	88	81	97	0.00	0.00
<b>High</b>			<b>96</b>			<b>100</b>		
<b>Low</b>		<b>70</b>			<b>79</b>			
<b>Average</b>	<b>81</b>	74	91	<b>87</b>	82	93		
				<b>Total for Month</b>		<b>4.00</b>	2.03	
Days over 95 <sup>o</sup>				2	<b>Number of Rain Days</b>		14	
Days of 100 <sup>o</sup>				0	<b>Historic Average</b>		6.15	
Days below 32 <sup>o</sup>				0	<b>Deviation from Average</b>		-2.15	
				<b>Net Gain/loss (Rain - ET)</b>			<b>1.97</b>	

<b>Year Cumulative</b>	
<b>Rain</b>	<b>ET</b>
28.4	22.7
76.0	
34.3	
-5.9	
	5.6

# July Marianna FAWN 6' Air Temps



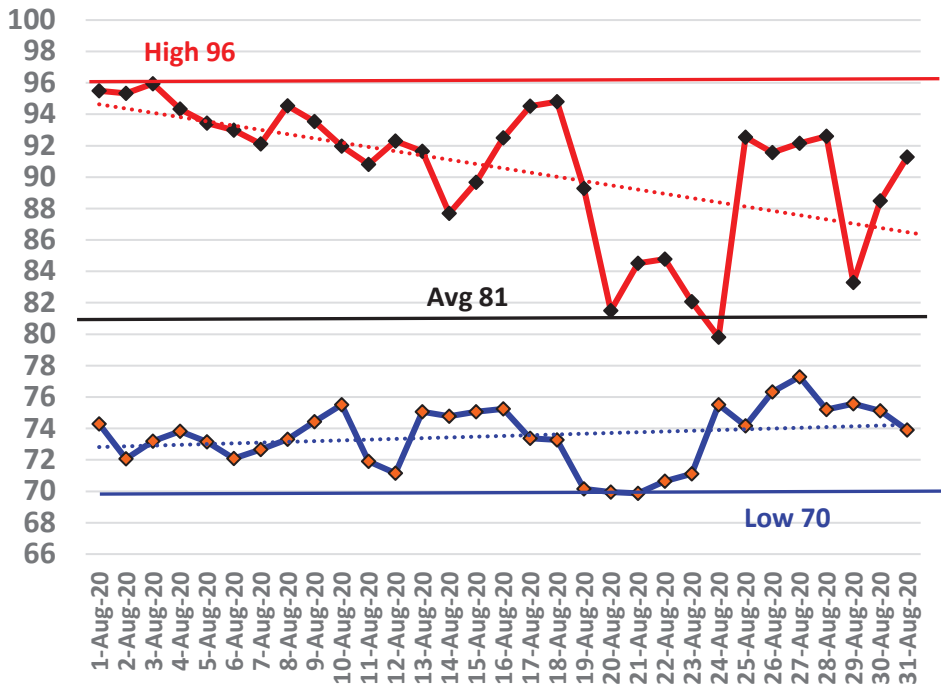


# August Daily Weather Data

Date	Temperature						Precipitation	
	Air Temp 6 ft			Soil Temp 4 inch			Rain	Evapo Trans
	Avg	Min	Max	Avg	Min	Max	Inches	Inches
1-Aug-20	83	74	95	90	82	100	0.00	0.23
2-Aug-20	83	72	95	91	83	101	0.00	0.21
3-Aug-20	85	73	96	92	85	101	0.00	0.22
4-Aug-20	84	74	94	92	85	102	0.02	0.23
5-Aug-20	82	73	93	90	85	97	0.71	0.18
6-Aug-20	83	72	93	86	81	93	0.00	0.18
7-Aug-20	82	73	92	86	81	94	0.02	0.19
8-Aug-20	81	73	95	86	81	98	1.25	0.19
9-Aug-20	84	74	94	87	81	95	0.00	0.22
10-Aug-20	83	76	92	88	82	96	0.04	0.22
11-Aug-20	77	72	91	84	80	92	1.61	0.12
12-Aug-20	81	71	92	85	78	93	0.00	0.21
13-Aug-20	81	75	92	86	81	94	0.00	0.18
14-Aug-20	79	75	88	84	81	90	0.54	0.13
15-Aug-20	81	75	90	84	80	89	0.00	0.17
16-Aug-20	84	75	93	86	80	94	0.00	0.21
17-Aug-20	84	73	95	88	81	97	0.00	0.21
18-Aug-20	82	73	95	88	82	96	0.00	0.19
19-Aug-20	77	70	89	84	78	91	2.14	0.18
20-Aug-20	74	70	82	81	79	83	0.11	0.08
21-Aug-20	76	70	85	81	77	86	0.04	0.13
22-Aug-20	77	71	85	81	78	85	0.07	0.13
23-Aug-20	76	71	82	80	77	83	0.09	0.09
24-Aug-20	77	76	80	79	78	80	0.66	0.04
25-Aug-20	82	74	93	82	77	89	0.01	0.19
26-Aug-20	83	76	92	84	80	90	0.00	0.19
27-Aug-20	82	77	92	84	81	90	0.69	0.14
28-Aug-20	82	75	93	84	80	90	0.00	0.19
29-Aug-20	78	76	83	81	80	83	0.76	0.07
30-Aug-20	79	75	88	82	79	88	0.05	0.13
31-Aug-20	81	74	91	84	79	91	0.00	0.19
<b>High</b>			<b>96</b>			<b>102</b>		
<b>Low</b>		<b>70</b>			<b>77</b>			
<b>Average</b>	<b>81</b>	74	91	<b>85</b>	80	92		
				<b>Total for Month</b>			<b>8.81</b>	5.24
Days over 95 <sup>0</sup>				3	<b>Number of Rain Days</b>			17
Days of 100 <sup>0</sup>				0	<b>Historic Average</b>			5.26
Days below 32 <sup>0</sup>				0	<b>Deviation from Average</b>			3.55
				<b>Net Gain/loss (Rain - ET)</b>				<b>3.57</b>

<b>Year Cumulative</b>	
<b>Rain</b>	<b>ET</b>
37.2	28.0
93.0	
39.6	
-2.4	
	9.2

## August Marianna FAWN 6' Air Temps



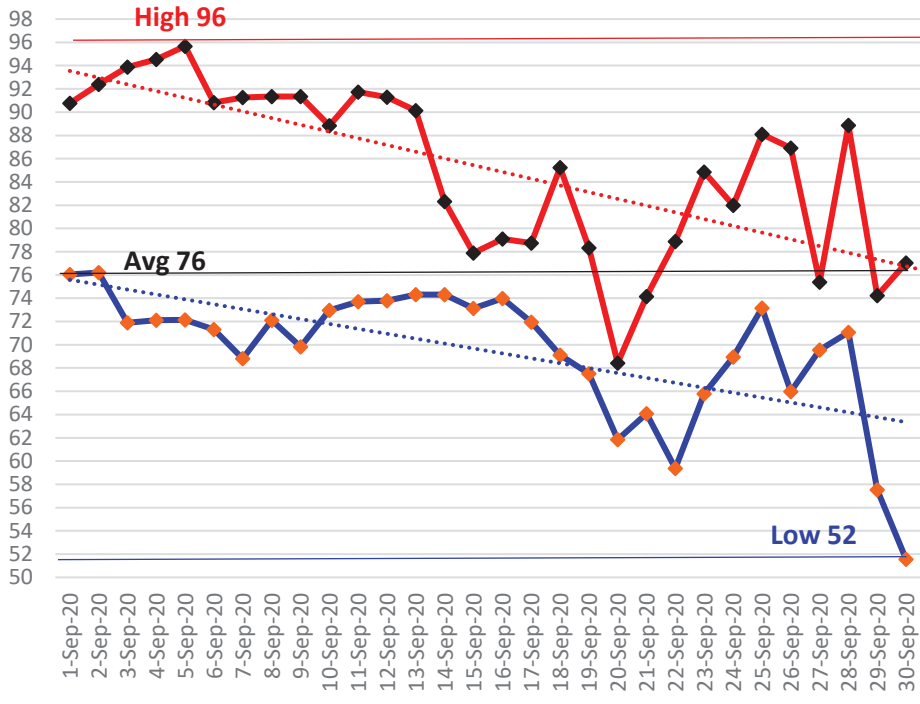
Summer Rain Days - 43 of 92 days

# September Daily Weather Data

Temperature							Precipitation		
Date	Air Temp 6 ft			Soil Temp 4 inch			Rain	Evapo Trans	
	Avg	Min	Max	Avg	Min	Max	Inches	Inches	
1-Sep-20	82	76	91	85	81	90	0.00	0.17	
2-Sep-20	83	76	92	86	82	93	0.00	0.2	
3-Sep-20	82	72	94	87	82	94	0.00	0.19	
4-Sep-20	83	72	95	88	82	94	0.00	0.19	
5-Sep-20	84	72	96	88	83	95	0.00	0.2	
6-Sep-20	81	71	91	87	82	93	0.00	0.18	
7-Sep-20	80	69	91	87	82	93	0.00	0.17	
8-Sep-20	80	72	91	87	83	93	0.00	0.17	
9-Sep-20	80	70	91	88	82	94	0.00	0.17	
10-Sep-20	78	73	89	86	83	91	1.18	0.12	
11-Sep-20	79	74	92	85	81	91	0.27	0.15	
12-Sep-20	80	74	91	84	81	89	0.04	0.16	
13-Sep-20	80	74	90	84	81	89	0.43	0.14	
14-Sep-20	78	74	82	81	79	82	0.54	0.06	
15-Sep-20	76	73	78	78	77	79	1.43	0.04	
16-Sep-20	76	74	79	76	75	77	7.04	0.04	
17-Sep-20	75	72	79	76	75	78	0.02	0.08	
18-Sep-20	76	69	85	79	74	84	0.00	0.13	
19-Sep-20	73	68	78	78	76	80	0.00	0.09	
20-Sep-20	66	62	68	74	73	75	0.09	0.06	
21-Sep-20	68	64	74	73	70	76	0.00	0.08	
22-Sep-20	69	59	79	73	69	77	0.00	0.11	
23-Sep-20	73	66	85	76	71	82	0.00	0.14	
24-Sep-20	75	69	82	76	73	80	0.65	0.09	
25-Sep-20	79	73	88	80	76	86	0.16	0.15	
26-Sep-20	76	66	87	80	75	85	0.00	0.13	
27-Sep-20	73	70	75	77	75	78	1.58	0.05	
28-Sep-20	78	71	89	79	75	85	0.00	0.13	
29-Sep-20	66	58	74	74	69	78	0.01	0.07	
30-Sep-20	64	52	77	71	65	79	0.00	0.11	
<b>High</b>			<b>96</b>			<b>95</b>			
<b>Low</b>		<b>52</b>			<b>65</b>				
<b>Average</b>	<b>76</b>	69	85	<b>81</b>	77	85			
				<b>Total for Month</b>			<b>13.44</b>	<b>3.77</b>	
Days over 95 <sup>0</sup>				1			<b>Number of Rain Days</b>	13.00	106.0
Days of 100 <sup>0</sup>				0			<b>Historic Average</b>	4.31	43.9
Days below 32 <sup>0</sup>				0			<b>Deviation from Average</b>	9.13	6.7
Days of 90+				12			<b>Net Gain/loss (Rain - ET)</b>	<b>9.67</b>	18.9

<b>Year Cumulative</b>	
<b>Rain</b>	<b>ET</b>
50.6	31.8
106.0	
43.9	
6.7	
	18.9

# September Marianna FAWN 6' Air Temps

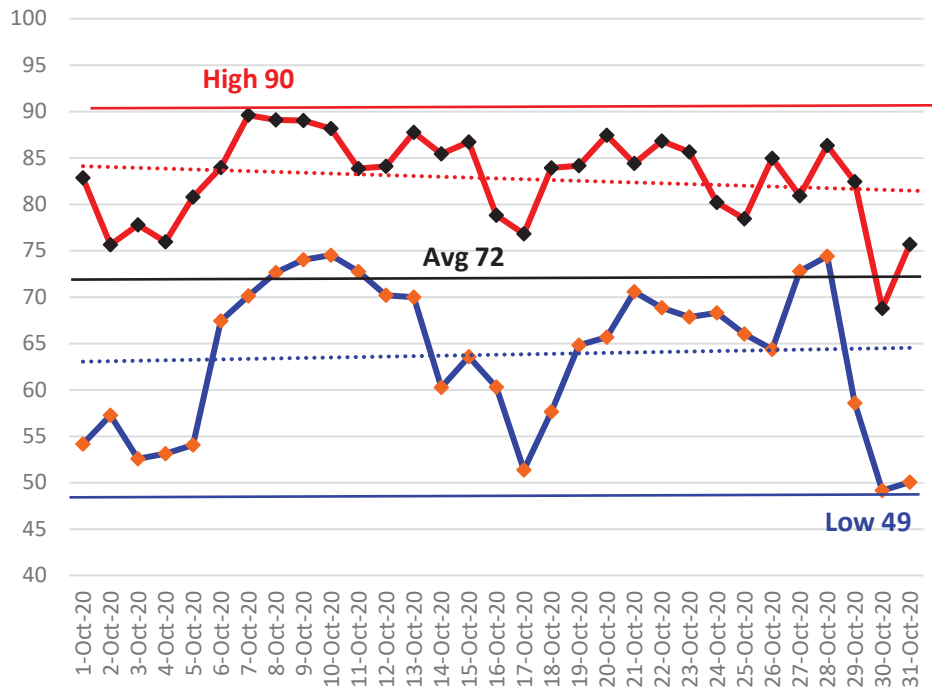


# October Daily Weather Data

Date	Temperature						Precipitation		
	Air Temp 6 ft			Soil Temp 4 inch			Rain	Evapo Trans	
	Avg	Min	Max	Avg	Min	Max	Inches	Inches	
1-Oct-20	68	54	83	73	66	81	0.00	0.12	
2-Oct-20	66	57	76	71	67	77	0.00	0.12	
3-Oct-20	64	53	78	71	65	79	0.00	0.11	
4-Oct-20	64	53	76	71	66	76	0.00	0.09	
5-Oct-20	67	54	81	72	66	79	0.00	0.11	
6-Oct-20	75	67	84	76	71	82	0.08	0.11	
7-Oct-20	78	70	90	78	73	85	0.00	0.12	
8-Oct-20	78	73	89	79	76	84	0.02	0.1	
9-Oct-20	80	74	89	80	76	85	0.01	0.14	
10-Oct-20	79	75	88	79	77	83	0.64	0.11	
11-Oct-20	78	73	84	78	75	80	0.00	0.09	
12-Oct-20	76	70	84	78	76	82	0.00	0.1	
13-Oct-20	77	70	88	78	75	84	0.00	0.12	
14-Oct-20	73	60	85	77	71	83	0.00	0.11	
15-Oct-20	74	64	87	78	73	83	0.00	0.12	
16-Oct-20	70	60	79	77	73	82	0.00	0.1	
17-Oct-20	63	51	77	73	68	79	0.00	0.09	
18-Oct-20	69	58	84	74	69	81	0.00	0.1	
19-Oct-20	73	65	84	76	72	82	0.00	0.11	
20-Oct-20	76	66	87	77	73	83	0.00	0.12	
21-Oct-20	75	71	84	77	75	82	0.04	0.09	
22-Oct-20	75	69	87	77	74	82	0.00	0.1	
23-Oct-20	76	68	86	77	74	81	0.01	0.1	
24-Oct-20	71	68	80	75	73	78	1.41	0.06	
25-Oct-20	71	66	78	74	72	78	0.00	0.07	
26-Oct-20	74	64	85	75	71	80	0.00	0.1	
27-Oct-20	76	73	81	76	74	78	0.27	0.06	
28-Oct-20	79	74	86	77	75	80	0.00	0.1	
29-Oct-20	76	59	82	76	70	79	0.71	0.09	
30-Oct-20	58	49	69	68	64	72	0.00	0.08	
31-Oct-20	62	50	76	68	63	73	0.00	0.08	
<b>High</b>			<b>90</b>			<b>85</b>			
<b>Low</b>		<b>49</b>			<b>63</b>				
<b>Average</b>	<b>72</b>	64	83	<b>75</b>	71	80			
Days over 95 <sup>o</sup>				0		<b>Total for Month</b>		<b>3.19</b>	3.12
Days below 32 <sup>o</sup>				0		<b>Number of Rain Days</b>		9.00	
						<b>Historic Average</b>		2.78	
						<b>Deviation from Average</b>		0.41	
						<b>Net Gain/loss (Rain - ET)</b>			<b>0.07</b>

<b>Year Cumulative</b>	
<b>Rain</b>	<b>ET</b>
53.8	34.9
115.0	
46.7	
7.1	
	19.0

# October Marianna FAWN 6' Air Temps

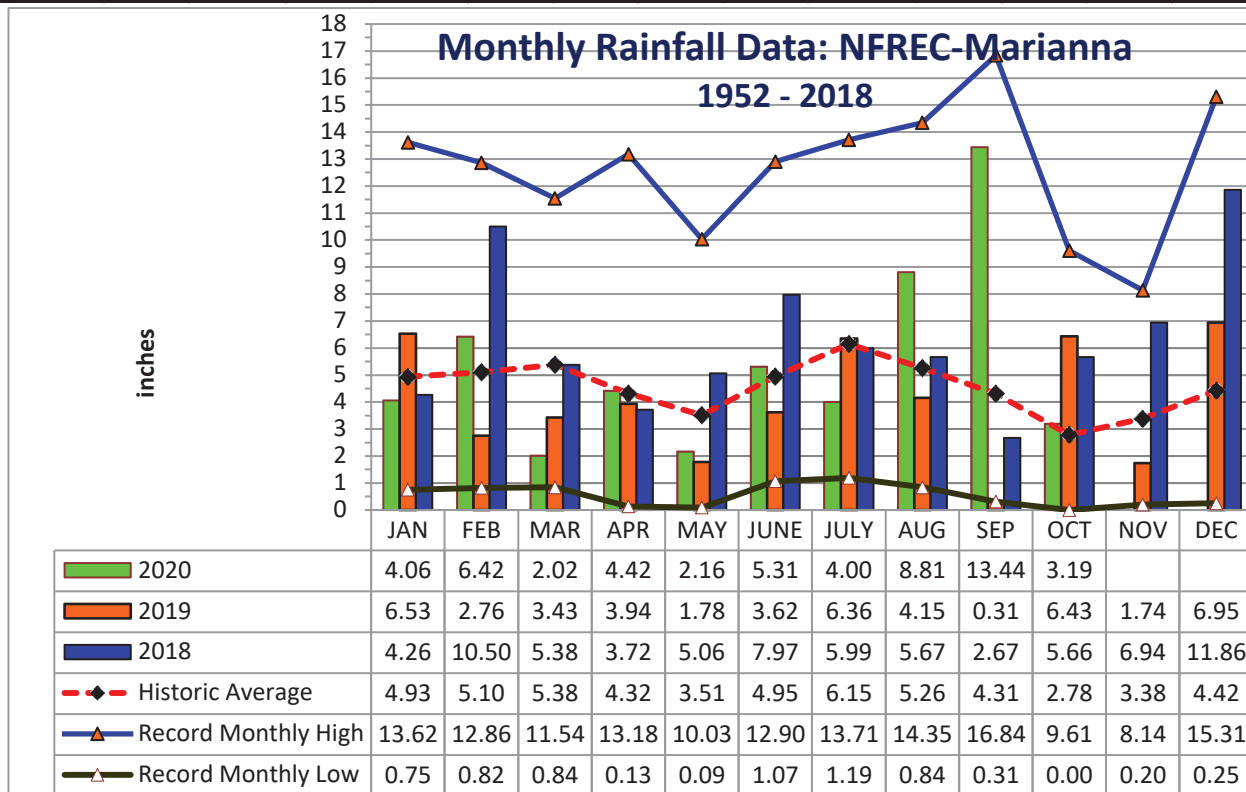




YEAR	JAN	FEB	MAR	APR	MAY	JUNE	JULY	AUG	SEP	OCT	NOV	DEC	TOTAL
1952	1.14	8.88	4.48	2.11	5.13	1.12	5.95	8.81	3.09	0.65	3.26	3.42	48.04
1953	4.84	7.26	3.03	8.43	2.43	3.97	6.84	1.63	6.33	0.65	4.09	15.31	64.81
1954	1.33	3.49	2.62	2.58	1.96	3.46	3.28	2.84	1.72	1.30	2.66	1.44	28.68
1955	3.66	1.83	0.84	5.80	3.03	1.62	6.75	3.75	2.44	2.10	0.72	0.77	33.31
1956	3.59	5.18	3.77	2.04	4.03	5.45	8.52	4.09	6.44	5.08	0.28	3.34	51.81
1957	0.75	2.65	5.17	5.74	4.60	5.75	9.83	5.91	16.84	1.31	6.24	2.22	67.01
1958	4.48	3.61	4.73	7.22	5.57	6.00	8.39	3.45	3.68	1.88	1.75	2.32	53.08
1959	3.67	7.06	8.50	5.73	6.95	3.77	4.83	3.67	3.07	7.93	0.21	1.53	56.92
1960	3.36	7.08	3.41	6.80	3.20	4.75	4.97	4.80	6.22	2.00	0.47	2.35	49.41
1961	4.23	4.15	3.64	5.57	3.97	4.41	3.99	11.09	2.60	0.00	2.84	6.23	52.72
1962	1.72	2.80	8.13	3.28	2.86	3.67	7.97	6.07	3.07	2.82	5.16	1.67	49.22
1963	7.31	3.02	3.18	1.36	3.50	7.99	5.16	1.50	5.25	0.01	4.22	6.05	48.55
1964	10.80	6.81	6.41	9.47	2.23	5.68	9.22	3.07	7.47	9.61	3.35	6.44	80.56
1965	2.63	6.09	5.51	3.96	0.18	9.60	3.26	4.18	4.48	3.41	1.81	3.60	48.71
1966	5.56	9.84	2.57	0.77	5.80	3.13	3.25	9.82	5.09	1.41	2.03	4.62	53.89
1967	8.27	3.32	2.19	0.13	2.61	7.02	6.49	3.58	1.40	1.86	2.40	7.98	47.25
1968	1.28	2.30	3.40	2.50	3.39	1.18	5.45	4.61	2.99	1.41	5.11	5.34	38.96
1969	1.68	3.49	7.08	4.54	3.01	1.71	13.18	3.05	5.64	1.50	1.22	3.80	49.90
1970	4.16	9.20	8.86	1.83	1.81	3.69	5.04	8.01	0.49	4.40	2.21	3.13	52.83
1971	1.97	6.11	7.15	3.17	3.03	3.85	5.20	6.76	2.47	1.84	1.94	3.70	47.19
1972	3.62	6.03	6.41	0.38	2.87	8.89	3.78	5.39	2.14	2.44	3.29	3.77	49.01
1973	8.14	7.71	8.38	7.60	6.87	3.63	11.12	4.51	5.40	0.27	3.64	5.33	72.60
1974	5.24	5.80	2.66	3.40	3.78	1.56	3.29	8.01	4.68	0.84	2.14	2.89	44.29
1975	10.21	6.36	4.91	10.35	3.97	4.10	13.71	5.40	3.81	4.35	2.89	3.28	73.34
1976	6.99	1.50	4.89	1.87	8.89	3.08	3.03	3.47	5.47	6.18	5.72	3.97	55.06
1977	3.47	1.81	6.52	0.88	0.60	6.36	3.55	5.22	9.83	2.59	8.14	4.19	53.16
1978	7.28	3.28	7.25	4.65	6.73	3.79	7.25	4.90	0.98	0.20	6.01	3.65	55.97
1979	7.30	7.78	3.26	7.75	6.22	1.31	7.49	6.30	11.51	0.53	4.47	2.84	66.76
1980	6.58	2.96	11.54	9.29	4.50	3.50	5.87	2.53	4.56	4.71	1.52	0.25	57.81
1981	1.70	5.32	5.94	3.03	2.73	4.74	4.02	2.53	2.44	1.75	0.85	4.94	39.99
1982	4.17	5.61	2.91	5.93	5.39	3.00	7.51	4.42	6.00	2.65	2.34	9.14	59.07
1983	4.92	6.84	8.53	7.88	2.27	5.66	1.19	2.53	8.97	3.52	5.90	7.65	65.86
1984	5.49	5.01	8.62	6.29	2.50	5.31	12.01	5.76	0.32	1.60	1.63	0.80	55.34
1985	4.60	4.46	2.60	1.18	4.44	5.68	3.68	5.58	1.42	7.42	7.91	5.34	54.31
1986	5.68	10.27	3.21	0.83	2.26	1.85	2.75	4.12	2.35	2.22	4.40	5.68	45.62
1987	8.62	5.52	7.23	0.40	4.46	5.43	5.51	4.18	2.27	0.06	4.02	0.81	48.51
1988	5.57	6.40	8.41	2.69	0.28	1.07	5.43	3.98	5.53	1.98	3.28	1.23	45.85
1989	1.59	2.74	4.96	3.63	7.01	12.90	11.19	3.06	3.36	7.20	4.71	5.45	67.80
1990	5.26	4.57	4.55	3.00	3.22	4.02	3.65	2.91	0.85	1.34	0.93	3.42	37.72
1991	13.62	3.44	9.00	5.32	10.03	5.30	10.67	3.89	1.53	1.17	1.60	3.00	68.57
1992	8.37	6.29	7.92	2.50	1.41	11.16	8.69	6.72	3.19	2.08	7.40	2.93	68.66
1993	12.00	3.38	7.41	1.50	1.60	4.18	6.68	3.89	3.44	2.90	2.27	3.63	52.88
1994	8.64	2.53	6.25	4.34	1.82	11.41	10.95	9.08	6.44	7.62	2.53	3.79	75.40
1995	5.23	3.13	4.29	4.35	3.90	5.56	3.02	6.16	0.86	7.51	4.12	1.78	49.91
1996	3.64	5.99	8.47	5.76	1.50	5.43	2.83	14.28	5.32	3.81	2.01	3.65	62.69

YEAR	JAN	FEB	MAR	APR	MAY	JUNE	JULY	AUG	SEP	OCT	NOV	DEC	TOTAL
1997	6.68	5.29	2.63	10.08	5.91	6.41	5.73	4.65	3.78	2.10	6.85	8.44	68.55
1998	6.28	8.30	6.11	2.24	1.45	2.35	4.37	2.20	16.31	0.30	2.05	1.98	53.94
1999	6.95	2.90	3.61	1.50	6.71	8.99	8.64	4.02	4.33	3.13	3.56	2.50	56.84
2000	3.78	4.96	4.48	4.05	0.09	4.00	3.40	7.15	7.20	0.71	4.43	3.21	47.46
2001	2.16	0.82	10.00	1.99	2.52	8.24	4.66	8.21	1.90	1.51	1.70	0.78	44.49
2002	3.82	2.44	5.51	5.78	2.19	3.45	10.34	3.30	11.83	7.36	7.76	5.99	69.77
2003	2.30	7.03	8.18	4.89	3.11	6.11	7.84	5.99	2.39	3.58	3.04	3.12	57.58
2004	3.19	7.66	0.90	4.37	1.19	6.66	4.92	1.67	10.01	3.89	4.97	3.25	52.68
2005	3.33	2.31	9.05	7.04	1.67	7.47	9.44	11.71	1.62	0.03	3.15	4.81	61.63
2006	4.82	3.90	0.91	1.61	4.97	1.99	2.22	5.18	0.91	3.09	3.41	5.43	38.44
2007	5.99	2.45	1.10	0.99	1.57	3.97	3.94	4.18	1.27	4.79	1.89	4.03	36.17
2008	4.26	9.00	9.11	4.28	1.46	8.64	4.02	9.29	0.74	5.11	3.18	8.23	67.32
2009	2.33	3.26	7.11	7.73	9.17	2.78	3.88	3.19	5.22	3.39	2.35	9.57	59.98
2010	7.53	3.99	3.41	4.01	5.09	2.92	2.31	0.84	1.33	0.22	5.82	0.63	38.10
2011	4.33	4.04	5.00	0.92	0.78	1.66	5.11	1.87	2.26	1.84	1.94	3.75	33.50
2012	3.79	7.49	5.94	3.17	1.42	7.35	5.05	14.35	5.17	1.75	1.30	4.10	60.88
2013	1.05	12.86	2.99	3.54	0.64	3.72	13.39	13.17	2.14	1.96	3.91	4.44	63.81
2014	2.15	4.99	7.70	13.18	4.03	2.32	5.69	2.55	6.03	2.03	5.93	5.32	61.92
2015	3.4	3.8	2.17	9.52	3.55	4.04	4.85	2.75	4.15	1.00	7.33	8.67	55.23
2016	4.8	3.51	8.15	4.94	1.74	3.49	2.79	7.28	4.19	0.22	0.8	12.33	54.24
2017	7.28	3.78	2.11	2.12	4.28	11.53	6.82	4.47	3.75	0.97	0.2	2.76	50.07
2018	4.26	10.50	5.38	3.72	5.06	7.97	5.99	5.67	2.67	5.66	6.94	11.86	75.68
2019	6.53	2.76	3.43	3.94	1.78	3.62	6.36	4.15	0.31	6.43	1.74	6.95	48.00
<b>2020</b>	<b>4.06</b>	<b>6.42</b>	<b>2.02</b>	<b>4.42</b>	<b>2.16</b>	<b>5.31</b>	<b>4.00</b>	<b>8.81</b>	<b>13.44</b>	<b>3.19</b>			<b>53.83</b>

Deviation from the Average Monthly Rainfall													
Inches	-0.87	1.32	-3.36	0.10	-1.35	0.36	-2.15	3.55	9.13	0.41			7.15
Monthly Average Rainfall, 1952-2019													
AVG.	4.93	5.10	5.38	4.32	3.51	4.95	6.15	5.26	4.31	2.78	3.38	4.42	54.49
% of Annual Rainfall Occuring each Month													
	9.1%	9.4%	9.9%	7.9%	6.4%	9.1%	11.3%	9.6%	7.9%	5.1%	6.2%	8.1%	
Record High/Low for the Month													
<b>LOW</b>	0.75	0.82	0.84	0.13	0.09	1.07	1.19	0.84	0.31	0.00	0.20	0.25	<b>28.68</b>
<b>HIGH</b>	13.62	12.86	11.54	13.18	10.03	12.90	13.71	14.35	16.84	9.61	8.14	15.31	<b>80.56</b>







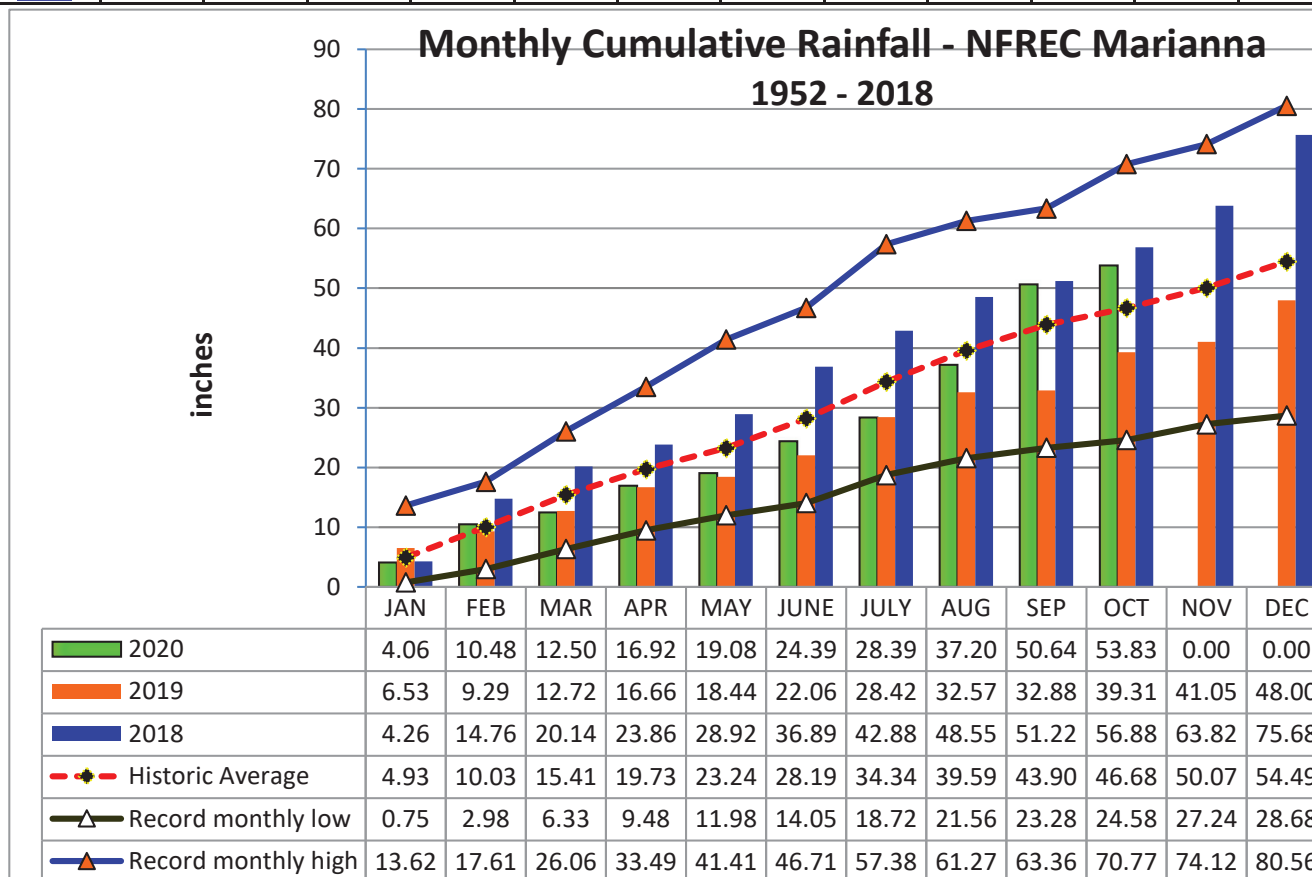
**Jackson County**  
**Monthly Cumulative Rainfall, 1952 -2020**  
 North Florida Research & Education Center Marianna,



YEAR	JAN	FEB	MAR	APR	MAY	JUNE	JULY	AUG	SEP	OCT	NOV	DEC
1952	1.14	10.02	14.50	16.61	21.74	22.86	28.81	37.62	40.71	41.36	44.62	48.04
1953	4.84	12.10	15.13	23.56	25.99	29.96	36.80	38.43	44.76	45.41	49.50	64.81
1954	1.33	4.82	7.44	10.02	<b>11.98</b>	15.44	<b>18.72</b>	<b>21.56</b>	<b>23.28</b>	<b>24.58</b>	<b>27.24</b>	<b>28.68</b>
1955	3.66	5.49	<b>6.33</b>	12.13	15.16	16.78	23.53	27.28	29.72	31.82	32.54	33.31
1956	3.59	8.77	12.54	14.58	18.61	24.06	32.58	36.67	43.11	48.19	48.47	51.81
1957	<b>0.75</b>	3.40	8.57	14.31	18.91	24.66	34.49	40.40	57.24	58.55	64.79	67.01
1958	4.48	8.09	12.82	20.04	25.61	31.61	40.00	43.45	47.13	49.01	50.76	53.08
1959	3.67	10.73	19.23	24.96	31.91	35.68	40.51	44.18	47.25	55.18	55.39	56.92
1960	3.36	10.44	13.85	20.65	23.85	28.60	33.57	38.37	44.59	46.59	47.06	49.41
1961	4.23	8.38	12.02	17.59	21.56	25.97	29.96	41.05	43.65	43.65	46.49	52.72
1962	1.72	4.52	12.65	15.93	18.79	22.46	30.43	36.50	39.57	42.39	47.55	49.22
1963	7.31	10.33	13.51	14.87	18.37	26.36	31.52	33.02	38.27	38.28	42.50	48.55
1964	10.80	<b>17.61</b>	24.02	<b>33.49</b>	35.72	41.40	50.62	53.69	61.16	<b>70.77</b>	<b>74.12</b>	<b>80.56</b>
1965	2.63	8.72	14.23	18.19	18.37	27.97	31.23	35.41	39.89	43.30	45.11	48.71
1966	5.56	15.40	17.97	18.74	24.54	27.67	30.92	40.74	45.83	47.24	49.27	53.89
1967	8.27	11.59	13.78	13.91	16.52	23.54	30.03	33.61	35.01	36.87	39.27	47.25
1968	1.28	3.58	6.98	<b>9.48</b>	12.87	<b>14.05</b>	19.50	24.11	27.10	28.51	33.62	38.96
1969	1.68	5.17	12.25	16.79	19.80	21.51	34.69	37.74	43.38	44.88	46.10	49.90
1970	4.16	13.36	22.22	24.05	25.86	29.55	34.59	42.60	43.09	47.49	49.70	52.83
1971	1.97	8.08	15.23	18.40	21.43	25.28	30.48	37.24	39.71	41.55	43.49	47.19
1972	3.62	9.65	16.06	16.44	19.31	28.20	31.98	37.37	39.51	41.95	45.24	49.01
1973	8.14	15.85	24.23	31.83	38.70	42.33	53.45	57.96	<b>63.36</b>	63.63	67.27	72.60
1974	5.24	11.04	13.70	17.10	20.88	22.44	25.73	33.74	38.42	39.26	41.40	44.29
1975	10.21	16.57	21.48	31.83	35.80	39.90	53.61	59.01	62.82	67.17	70.06	73.34
1976	6.99	8.49	13.38	15.25	24.14	27.22	30.25	33.72	39.19	45.37	51.09	55.06
1977	3.47	5.28	11.80	12.68	13.28	19.64	23.19	28.41	38.24	40.83	48.97	53.16
1978	7.28	10.56	17.81	22.46	29.19	32.98	40.23	45.13	46.11	46.31	52.32	55.97
1979	7.30	15.08	18.34	26.09	32.31	33.62	41.11	47.41	58.92	59.45	63.92	66.76
1980	6.58	9.54	21.08	30.37	34.87	38.37	44.24	46.77	51.33	56.04	57.56	57.81
1981	1.70	7.02	12.96	15.99	18.72	23.46	27.48	30.01	32.45	34.20	35.05	39.99
1982	4.17	9.78	12.69	18.62	24.01	27.01	34.52	38.94	44.94	47.59	49.93	59.07
1983	4.92	11.76	20.29	28.17	30.44	36.10	37.29	39.82	48.79	52.31	58.21	65.86
1984	5.49	10.50	19.12	25.41	27.91	33.22	45.23	50.99	51.31	52.91	54.54	55.34
1985	4.60	9.06	11.66	12.84	17.28	22.96	26.64	32.22	33.64	41.06	48.97	54.31
1986	5.68	15.95	19.16	19.99	22.25	24.10	26.85	30.97	33.32	35.54	39.94	45.62
1987	8.62	14.14	21.37	21.77	26.23	31.66	37.17	41.35	43.62	43.68	47.70	48.51
1988	5.57	11.97	20.38	23.07	23.35	24.42	29.85	33.83	39.36	41.34	44.62	45.85
1989	1.59	4.33	9.29	12.92	19.93	32.83	44.02	47.08	50.44	57.64	62.35	67.80
1990	5.26	9.83	14.38	17.38	20.60	24.62	28.27	31.18	32.03	33.37	34.30	37.72
1991	<b>13.62</b>	17.06	<b>26.06</b>	31.38	<b>41.41</b>	<b>46.71</b>	<b>57.38</b>	<b>61.27</b>	62.80	63.97	65.57	68.57
1992	8.37	14.66	22.58	25.08	26.49	37.65	46.34	53.06	56.25	58.33	65.73	68.66
1993	12.00	15.38	22.79	24.29	25.89	30.07	36.75	40.64	44.08	46.98	49.25	52.88
1994	8.64	11.17	17.42	21.76	23.58	34.99	45.94	55.02	61.46	69.08	71.61	75.40
1995	5.23	8.36	12.65	17.00	20.90	26.46	29.48	35.64	36.50	44.01	48.13	49.91
1996	3.64	9.63	18.10	23.86	25.36	30.79	33.62	47.90	53.22	57.03	59.04	62.69

YEAR	JAN	FEB	MAR	APR	MAY	JUNE	JULY	AUG	SEP	OCT	NOV	DEC
1997	6.68	11.97	14.60	24.68	30.59	37.00	42.73	47.38	51.16	53.26	60.11	68.55
1998	6.28	14.58	20.69	22.93	24.38	26.73	31.10	33.30	49.61	49.91	51.96	53.94
1999	6.95	9.85	13.46	14.96	21.67	30.66	39.30	43.32	47.65	50.78	54.34	56.84
2000	3.78	8.74	13.22	17.27	17.36	21.36	24.76	31.91	39.11	39.82	44.25	47.46
2001	2.16	2.98	12.98	14.97	17.49	25.73	30.39	38.60	40.50	42.01	43.71	44.49
2002	3.82	6.26	11.77	17.55	19.74	23.19	33.53	36.83	48.66	56.02	63.78	69.77
2003	2.30	9.33	17.51	22.40	25.51	31.62	39.46	45.45	47.84	51.42	54.46	57.58
2004	3.19	10.85	11.75	16.12	17.31	23.97	28.89	30.56	40.57	44.46	49.43	52.68
2005	3.33	5.64	14.69	21.73	23.40	30.87	40.31	52.02	53.64	53.67	56.82	61.63
2006	4.82	8.72	9.63	11.24	16.21	18.20	20.42	25.60	26.51	29.60	33.01	38.44
2007	5.99	8.44	9.54	10.53	12.10	16.07	20.01	24.19	25.46	30.25	32.14	36.17
2008	4.26	13.26	22.37	26.65	28.11	36.75	40.77	50.06	50.80	55.91	59.09	67.32
2009	2.33	5.59	12.70	20.43	29.60	32.38	36.26	39.45	44.67	48.06	50.41	59.98
2010	7.53	11.52	14.93	18.94	24.03	26.95	29.26	30.10	31.43	31.65	37.47	38.10
2011	4.33	8.37	13.37	14.29	15.07	16.73	21.84	23.71	25.97	27.81	29.75	33.50
2012	3.79	11.28	17.22	20.39	21.81	29.16	34.21	48.56	53.73	55.48	56.78	60.88
2013	1.05	13.91	16.90	20.44	21.08	24.80	38.19	51.36	53.50	55.46	59.37	63.81
2014	2.15	7.14	14.84	28.02	32.05	34.37	40.06	42.61	48.64	50.67	56.60	61.92
2015	3.40	7.20	9.37	18.89	22.44	26.48	31.33	34.08	38.23	39.23	46.56	55.23
2016	4.80	8.31	16.46	21.40	23.14	26.63	29.42	36.70	40.89	41.11	41.91	54.24
2017	7.28	11.06	13.17	15.29	19.57	31.10	37.92	42.39	46.14	47.11	47.31	50.07
2018	4.26	14.76	20.14	23.86	28.92	36.89	42.88	48.55	51.22	56.88	63.82	75.68
2019	6.53	9.29	12.72	16.66	18.44	22.06	28.42	32.57	32.88	39.31	41.05	48.00
<b>2020</b>	<b>4.06</b>	<b>10.48</b>	<b>12.50</b>	<b>16.92</b>	<b>19.08</b>	<b>24.39</b>	<b>28.39</b>	<b>37.20</b>	<b>50.64</b>	<b>53.83</b>		

Deviation from the Average Accumulation												
Inches	-0.87	0.45	-2.91	-2.81	-4.16	-3.80	-5.95	-2.39	6.74	7.15	#VALUE!	#VALUE!
Average Accumulation, 1952-2019												
Inches	4.93	10.03	15.41	19.73	23.24	28.19	34.34	39.59	43.90	46.68	50.07	54.49
Record High/Low Accumulation												
<b>LOW</b>	0.75	2.98	6.33	9.48	11.98	14.05	18.72	21.56	23.28	24.58	27.24	28.68
<b>HIGH</b>	13.62	17.61	26.06	33.49	41.41	46.71	57.38	61.27	63.36	70.77	74.12	80.56



## 2020 UF/IFAS FAWN Panhandle Weather Station Summary

FAWN Station	Data	Jan	Feb	Mar	Apr	May	June	July	Aug	Sept	Oct	Total
Monticello	Rain	1.9	4.8	2.4	4.7	1.8	15.1	7.9	6.6	9.9	1.0	56.1
	Hist Avg	4.5	4.6	6.1	4.1	3.4	5.7	7.0	6.9	5.4	3.6	51.3
	Deviation	-2.6	0.2	-3.7	0.6	-1.6	9.4	0.9	-0.3	4.5	-2.6	4.8
Quincy	Rain	1.9	6.2	2.7	4.8	4.1	11.5	5.4	8.5	15.0	2.6	62.9
	Hist Avg	5.0	4.3	5.6	3.7	4.2	5.2	6.3	6.2	4.1	3.4	48.0
	Deviation	-3.1	1.9	-2.9	1.1	-0.1	6.3	-0.9	2.3	10.9	-0.8	14.9
Carrabelle	Rain	2.0	4.0	0.8	3.6	4.5	4.8	4.8	9.0	11.5	1.9	46.9
	Hist Avg	3.8	3.7	4.9	3.0	2.7	5.3	7.3	7.9	7.3	3.7	49.6
	Deviation	-1.8	0.3	-4.1	0.6	1.8	-0.5	-2.5	1.1	4.2	-1.8	-2.7
Marianna	Rain	4.1	6.4	2.0	4.4	2.2	5.3	4.0	8.8	13.4	3.2	53.8
	Hist Avg	4.9	5.1	5.4	4.3	3.5	4.9	6.2	5.3	4.3	2.8	46.7
	Deviation	-0.9	1.3	-3.4	0.1	-1.4	0.4	-2.2	3.6	9.1	0.4	7.1
DeFuniak	Rain	4.9	9.0	2.5	9.2	2.5	4.8	9.4	8.3	15.7	4.5	70.8
	Hist Avg	4.9	5.4	5.6	3.9	4.5	7.1	7.2	6.3	5.7	3.7	54.4
	Deviation	0.0	3.5	-3.1	5.3	-2.0	-2.3	2.2	2.0	10.0	0.8	16.4
Jay	Rain	6.4	7.0	1.6	2.2	3.6	8.3	10.3	5.3	20.0	6.6	71.1
	Hist Avg	5.5	5.3	6.6	4.8	4.8	5.8	7.0	6.2	5.5	3.3	54.8
	Deviation	0.9	1.7	-5.0	-2.7	-1.2	2.5	3.3	-0.9	14.5	3.3	16.3
<b>6 Station Average</b>		<b>3.5</b>	<b>6.2</b>	<b>2.0</b>	<b>4.8</b>	<b>3.1</b>	<b>8.3</b>	<b>7.0</b>	<b>7.7</b>	<b>14.3</b>	<b>3.3</b>	<b>60.3</b>
<b>6 Station Historic Average</b>		<b>4.8</b>	<b>4.7</b>	<b>5.7</b>	<b>4.0</b>	<b>3.9</b>	<b>5.7</b>	<b>6.8</b>	<b>6.5</b>	<b>5.4</b>	<b>3.4</b>	<b>50.8</b>
<b>Deviation from Avg</b>		<b>-1.3</b>	<b>1.5</b>	<b>-3.7</b>	<b>0.8</b>	<b>-0.7</b>	<b>2.6</b>	<b>0.1</b>	<b>1.3</b>	<b>8.9</b>	<b>-0.1</b>	<b>9.5</b>

