



Jackson County 2021 Weather Data

70 Years of Weather Data Recorded at the UF/IFAS Marianna North Florida Research and Education Center



Doug Mayo
Jackson County Extension Director

1952-2008 Rainfall Data compiled by
Ed Jowers, Emeritus County Extension Director

Data provided by Florida Automated Weather Station (FAWN)
UF/IFAS North Florida Research and Education Center
Greenwood, Florida



<http://fawn.ifas.ufl.edu/>

Tower Name	Tower Number	Latitude Degree, Minutes	Latitude Degrees, Minutes, Seconds	Latitude Degrees Decimal	Longitude Degree, Minutes	Longitude Degrees, Minutes, Seconds	Longitude Degrees Decimal	Elevation Feet
Marianna	130.00	N 30°51.000'	N 30°50'00.00"	N 30.85000°	-85°09.910'	-85°09'54.60"	-85.16516°	115'

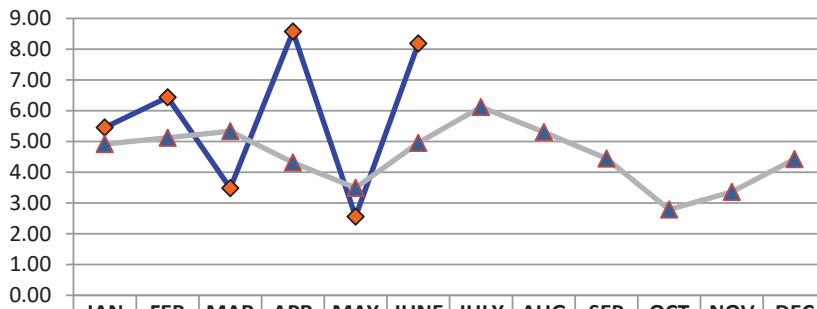
2021 UF/IFAS FAWN Marianna Weather Summary

Month	6' Air Temp			Soil Temp			Rainfall Inches	Dev from Hist Avg
	High	Low	Avg	High	Low	Avg		
January	77	31	53	67	43	55	5.5	0.5
February	83	30	55	73	45	57	6.4	1.3
March	87	37	64	84	52	67	3.5	-1.9
April	89	38	66	87	54	71	8.6	4.3
May	93	51	74	95	64	79	2.6	-0.9
June	94	67	79	94	75	84	8.2	3.2
2021	94	30	65	95	43	69	34.7	6.5

Data source: UF/IFAS Florida Automated Weather Network Marianna Station

Total days <32° 5 Total days >95° 0

Monthly Rainfall @ Marianna FAWN



	JAN	FEB	MAR	APR	MAY	JUNE	JULY	AUG	SEP	OCT	NOV	DEC
2021	5.45	6.43	3.48	8.57	2.56	8.18						
Historic Avg	4.92	5.12	5.33	4.32	3.49	4.95	6.12	5.31	4.44	2.79	3.36	4.43

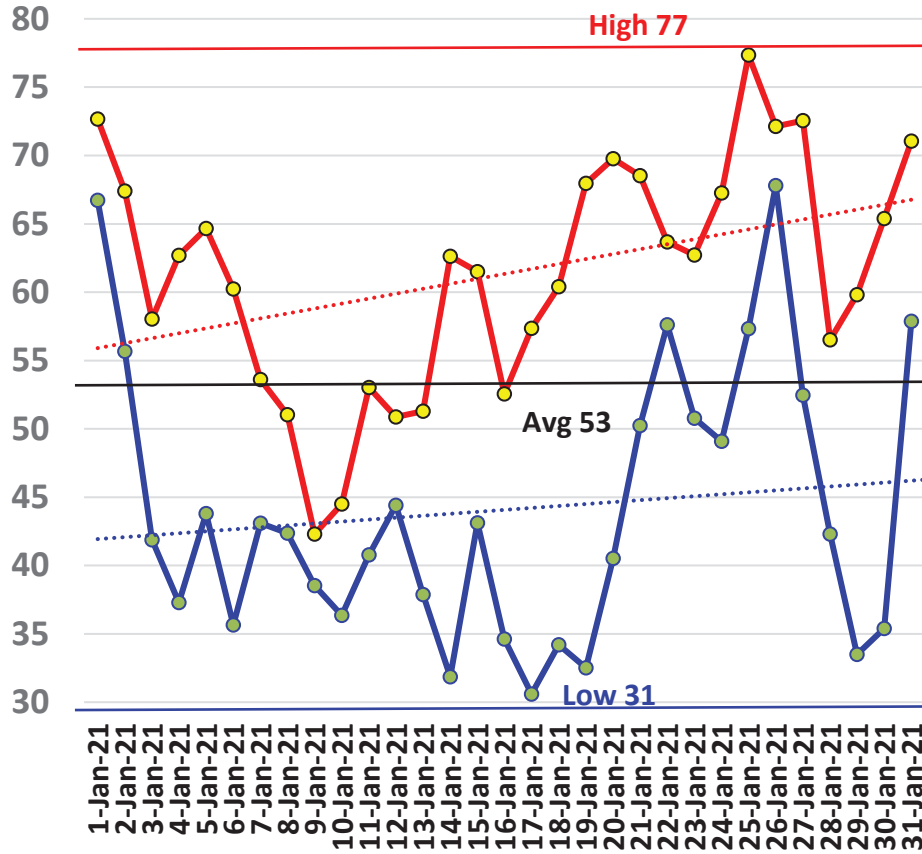
◆ 2021 ▲ Historic Avg

January Daily Weather Data

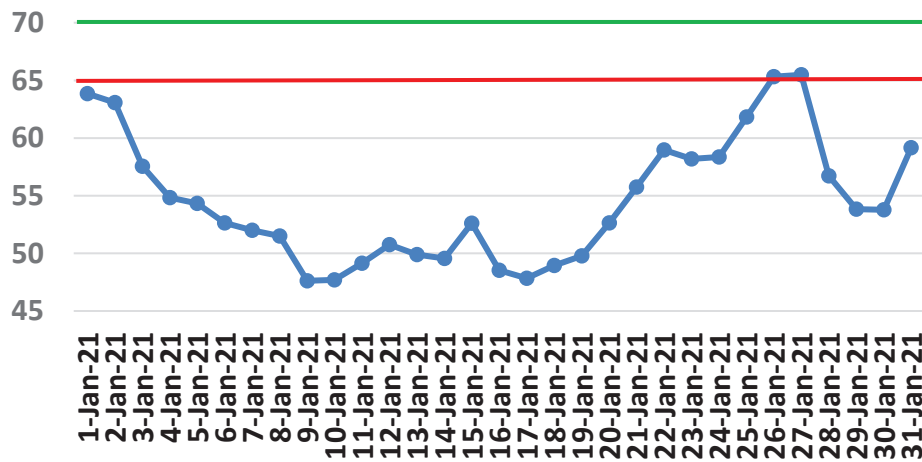
Temperature							Precipitation							
Date	Air Temp 6 ft			Soil Temp 4 inch			Rain	Evapo Trans						
	Avg	Min	Max	Avg	Min	Max	Inches	Inches						
1-Jan-21	69	67	73	64	62	65	1.00	0.04						
2-Jan-21	62	56	67	63	61	64	0.78	0.05						
3-Jan-21	50	42	58	58	54	60	0.00	0.04						
4-Jan-21	49	37	63	55	51	60	0.00	0.04						
5-Jan-21	52	44	65	54	52	59	0.00	0.04						
6-Jan-21	47	36	60	53	48	57	0.00	0.04						
7-Jan-21	50	43	54	52	50	54	0.43	0.04						
8-Jan-21	47	42	51	51	49	53	0.00	0.04						
9-Jan-21	41	39	42	48	46	49	0.00	0.03						
10-Jan-21	40	36	44	48	46	51	0.00	0.03						
11-Jan-21	47	41	53	49	47	51	0.27	0.04						
12-Jan-21	48	44	51	51	50	52	0.00	0.04						
13-Jan-21	43	38	51	50	48	53	0.00	0.04						
14-Jan-21	47	32	63	50	44	55	0.00	0.04						
15-Jan-21	54	43	62	53	50	57	0.04	0.05						
16-Jan-21	43	35	53	49	45	52	0.00	0.04						
17-Jan-21	44	31	57	48	43	53	0.00	0.04						
18-Jan-21	47	34	60	49	45	54	0.00	0.04						
19-Jan-21	50	33	68	50	44	56	0.00	0.05						
20-Jan-21	54	41	70	53	48	58	0.00	0.06						
21-Jan-21	61	50	69	56	53	58	0.02	0.06						
22-Jan-21	61	58	64	59	58	60	1.20	0.04						
23-Jan-21	56	51	63	58	56	61	0.00	0.05						
24-Jan-21	58	49	67	58	55	62	0.00	0.06						
25-Jan-21	67	57	77	62	58	65	0.00	0.08						
26-Jan-21	70	68	72	65	64	67	1.13	0.04						
27-Jan-21	65	52	73	65	61	67	0.51	0.06						
28-Jan-21	48	42	57	57	53	60	0.00	0.06						
29-Jan-21	45	33	60	54	49	59	0.00	0.05						
30-Jan-21	51	35	65	54	49	59	0.00	0.06						
31-Jan-21	64	58	71	59	55	62	0.07	0.06						
High			77			67								
Low		31			43									
Average	53	44	61	55	51	58								
Days over 95 ^o 0 Days below 32 ^o 2							Total for Month		5.45	1.45	5.5	1.5		
							Number of Rain Days				10		10.0	
							Historic Average				4.92		4.9	
							Deviation from Average				0.53		0.5	
							Net Gain/loss (Rain - ET)						4	4.0

Year Cumulative	
Rain	ET
5.5	1.5
10.0	
4.9	
0.5	
	4.0

Jan Marianna FAWN 6' Air Temps



January Avg Soil Temps Marianna

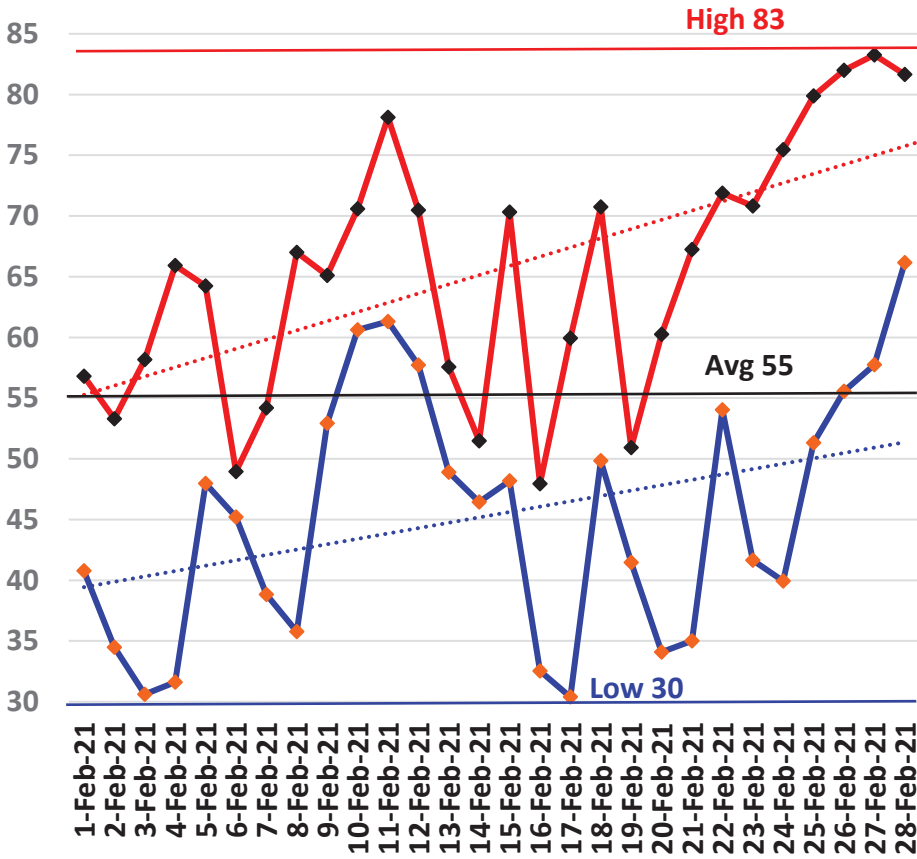


February Daily Weather Data

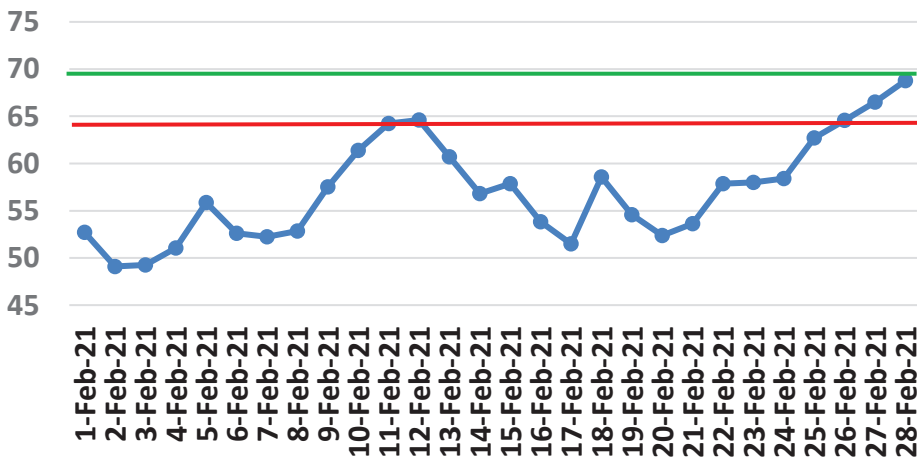
Date	Temperature						Precipitation		
	Air Temp 6 ft			Soil Temp 4 inch			Rain	Evapo Trans	
	Avg	Min	Max	Avg	Min	Max	Inches	Inches	
1-Feb-21	45	41	57	53	49	59	0.00	0.05	
2-Feb-21	43	34	53	49	45	53	0.00	0.06	
3-Feb-21	43	31	58	49	45	55	0.00	0.06	
4-Feb-21	51	32	66	51	45	56	0.03	0.07	
5-Feb-21	57	48	64	56	54	58	0.29	0.05	
6-Feb-21	47	45	49	53	52	54	0.30	0.04	
7-Feb-21	47	39	54	52	50	55	0.01	0.05	
8-Feb-21	51	36	67	53	47	59	0.00	0.07	
9-Feb-21	60	53	65	58	55	60	1.49	0.05	
10-Feb-21	65	61	71	61	59	64	0.01	0.06	
11-Feb-21	68	61	78	64	62	68	0.44	0.08	
12-Feb-21	64	58	70	65	63	67	0.89	0.06	
13-Feb-21	53	49	58	61	58	63	0.46	0.05	
14-Feb-21	49	46	51	57	55	58	0.17	0.05	
15-Feb-21	56	48	70	58	55	61	0.76	0.07	
16-Feb-21	38	33	48	54	50	58	0.00	0.06	
17-Feb-21	46	30	60	51	46	56	0.00	0.07	
18-Feb-21	59	50	71	59	55	62	1.36	0.07	
19-Feb-21	47	41	51	55	51	57	0.05	0.06	
20-Feb-21	46	34	60	52	47	59	0.00	0.08	
21-Feb-21	52	35	67	54	48	60	0.00	0.08	
22-Feb-21	61	54	72	58	55	62	0.17	0.08	
23-Feb-21	56	42	71	58	52	64	0.00	0.09	
24-Feb-21	58	40	75	58	52	65	0.00	0.1	
25-Feb-21	65	51	80	63	57	70	0.00	0.1	
26-Feb-21	68	56	82	65	60	70	0.00	0.1	
27-Feb-21	70	58	83	67	63	72	0.00	0.11	
28-Feb-21	73	66	82	69	66	73	0.00	0.11	
High			83			73			
Low		30			45				
Average	55	45	66	57	53	61			
Days over 95 ⁰	0			Total for Month		6.43	1.98	11.9	3.4
				Number of Rain Days		14		24.0	
Days below 32 ⁰	3			Historic Average		5.12		10.0	
				Deviation from Average		1.31		1.8	
				Net Gain/loss (Rain - ET)				4.45	

Year Cumulative	
Rain	
ET	
11.9	3.4
24.0	
10.0	
1.8	
	8.5

February Marianna FAWN 6' Air Temps



February Avg Soil Temps Marianna

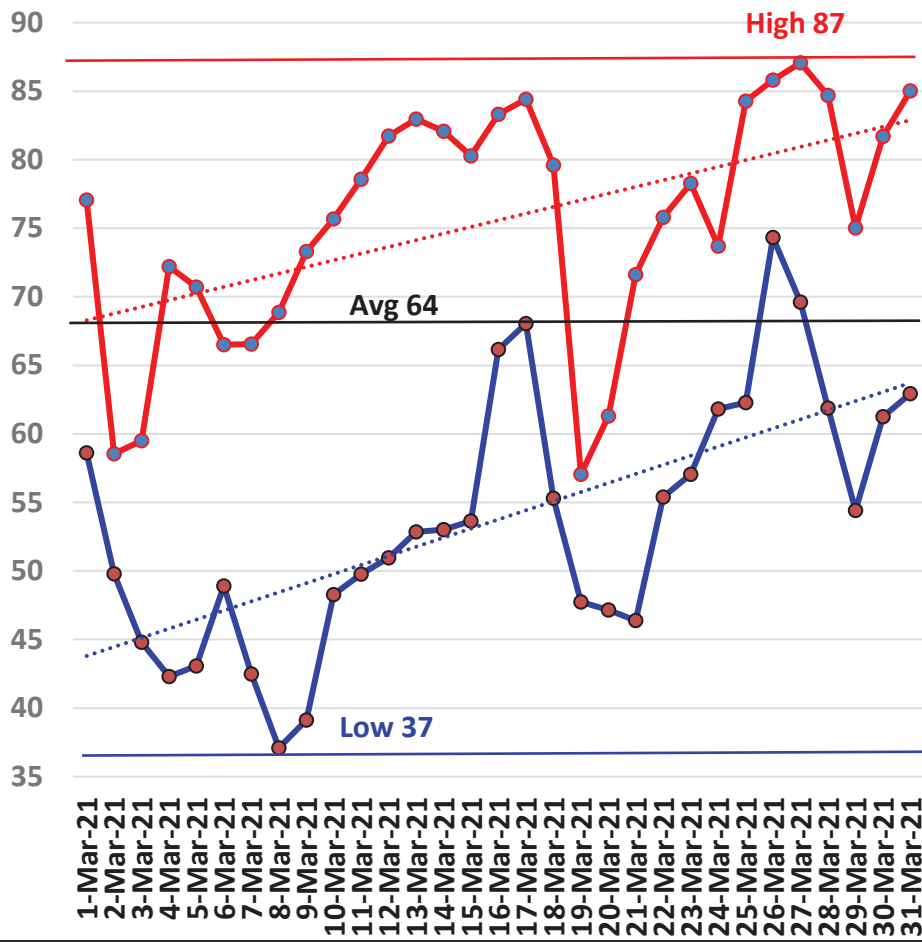


March Daily Weather Data

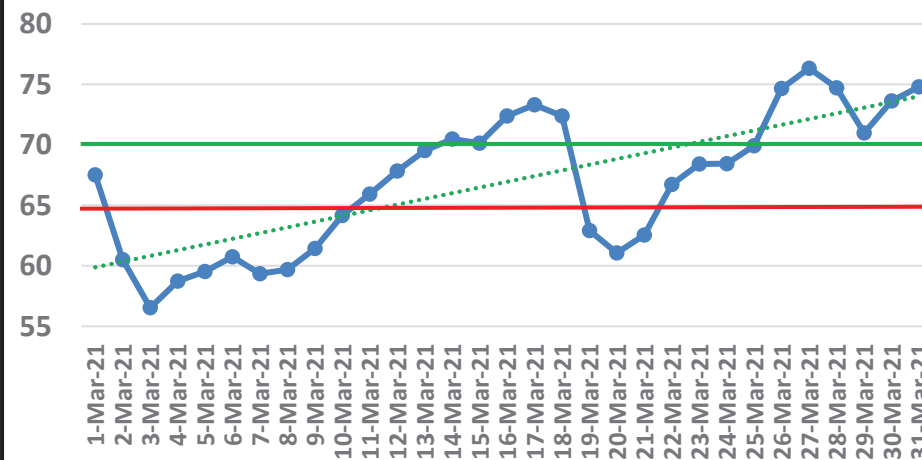
Temperature							Precipitation		
Date	Air Temp 6 ft			Soil Temp 4 inch			Rain	Evapo Trans	
	Avg	Min	Max	Avg	Min	Max	Inches	Inches	
1-Mar-21	67	59	77	68	64	71	0.86	0.07	
2-Mar-21	54	50	59	61	57	64	1.41	0.05	
3-Mar-21	50	45	60	57	54	61	0.01	0.07	
4-Mar-21	57	42	72	59	52	67	0.00	0.1	
5-Mar-21	58	43	71	60	53	66	0.00	0.09	
6-Mar-21	57	49	67	61	57	66	0.01	0.08	
7-Mar-21	53	42	67	59	53	68	0.00	0.1	
8-Mar-21	53	37	69	60	52	70	0.00	0.09	
9-Mar-21	57	39	73	61	52	72	0.00	0.1	
10-Mar-21	62	48	76	64	57	73	0.00	0.11	
11-Mar-21	65	50	79	66	58	76	0.00	0.12	
12-Mar-21	67	51	82	68	60	77	0.00	0.12	
13-Mar-21	68	53	83	70	62	79	0.00	N/A	
14-Mar-21	68	53	82	70	63	79	0.00	0.13	
15-Mar-21	68	54	80	70	64	77	0.00	0.11	
16-Mar-21	73	66	83	72	68	79	0.00	0.13	
17-Mar-21	74	68	84	73	69	79	0.00	0.12	
18-Mar-21	70	55	80	72	66	78	0.31	0.14	
19-Mar-21	53	48	57	63	60	66	0.00	0.07	
20-Mar-21	55	47	61	61	59	65	0.00	0.07	
21-Mar-21	57	46	72	63	56	72	0.00	0.11	
22-Mar-21	65	55	76	67	60	75	0.00	0.11	
23-Mar-21	67	57	78	68	63	75	0.00	0.11	
24-Mar-21	67	62	74	68	66	71	0.20	0.08	
25-Mar-21	74	62	84	70	65	76	0.00	0.13	
26-Mar-21	78	74	86	75	71	81	0.00	0.13	
27-Mar-21	77	70	87	76	71	84	0.00	0.14	
28-Mar-21	72	62	85	75	70	83	0.13	0.13	
29-Mar-21	64	54	75	71	63	81	0.00	0.14	
30-Mar-21	71	61	82	74	67	81	0.00	0.13	
31-Mar-21	72	63	85	75	70	82	0.55	0.13	
High			87			84			
Low		37			52				
Average	64	54	76	67	61	74			
Days over 95 ⁰				Total for Month			3.48	3.21	
				Number of Rain Days					8
Days below 32 ⁰				Historic Average			5.33		
				Deviation from Average					-1.85
				Net Gain/loss (Rain - ET)				0.27	

Year Cumulative	
Rain	ET
15.4	6.6
32.0	
15.4	
0.0	
	8.7

March Marianna FAWN 6' Air Temps



March Avg Soil Temps Marianna

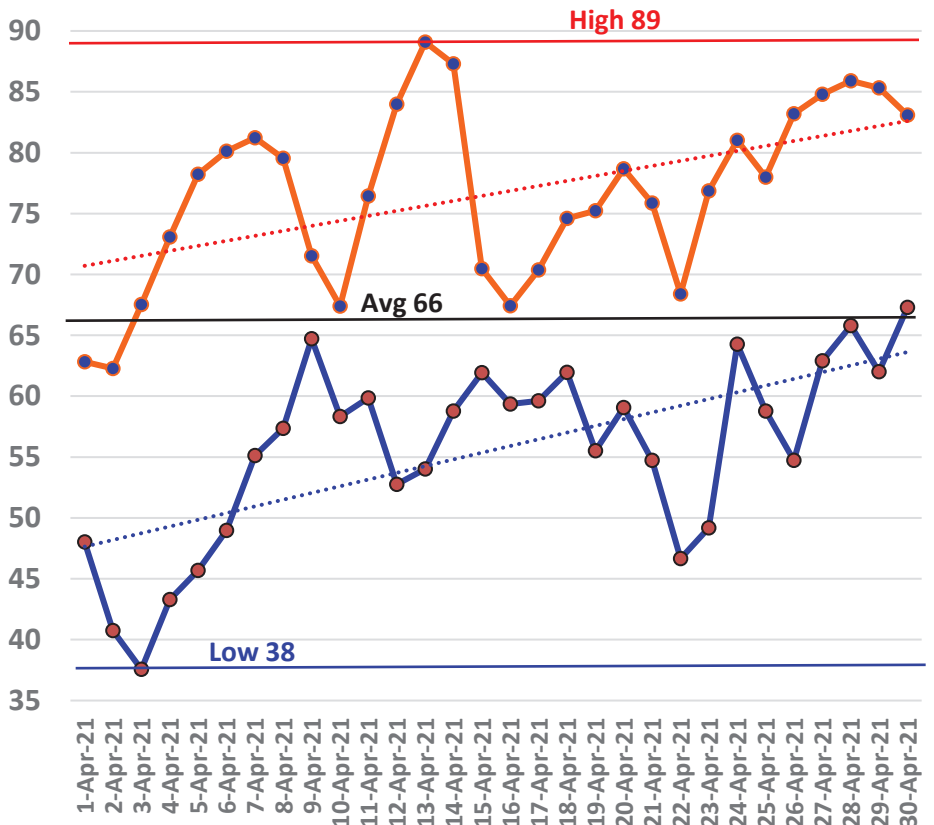


April Daily Weather Data

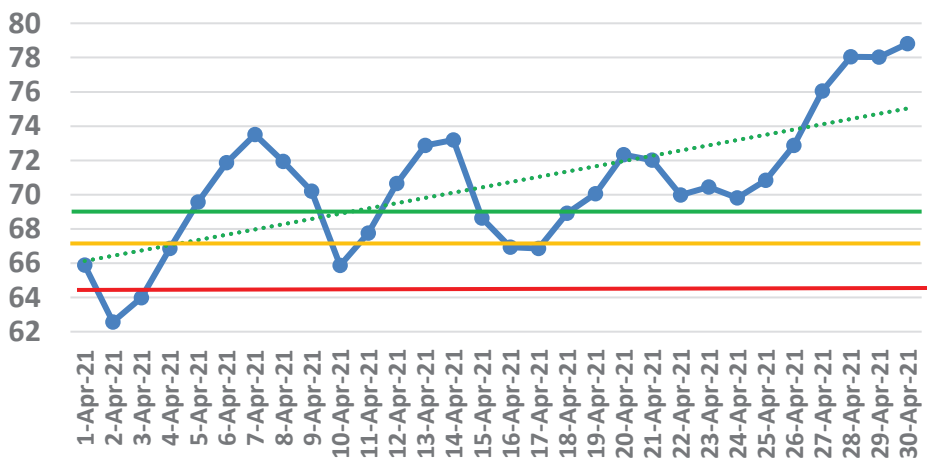
Temperature							Precipitation		
Date	Air Temp 6 ft			Soil Temp 4 inch			Rain	Evapo Trans	
	Avg	Min	Max	Avg	Min	Max	Inches	Inches	
1-Apr-21	55	48	63	66	60	72	0.00	0.13	
2-Apr-21	50	41	62	63	54	73	0.00	0.12	
3-Apr-21	53	38	68	64	55	75	0.00	0.12	
4-Apr-21	59	43	73	67	58	78	0.00	0.13	
5-Apr-21	63	46	78	70	60	81	0.00	0.14	
6-Apr-21	65	49	80	72	63	83	0.00	0.15	
7-Apr-21	67	55	81	74	67	83	0.00	0.14	
8-Apr-21	69	57	80	72	68	78	0.00	0.11	
9-Apr-21	69	65	72	70	68	72	0.47	0.06	
10-Apr-21	64	58	67	66	64	68	1.49	0.06	
11-Apr-21	68	60	76	68	63	75	0.00	0.1	
12-Apr-21	69	53	84	71	62	81	0.01	0.17	
13-Apr-21	72	54	89	73	64	84	0.00	0.16	
14-Apr-21	70	59	87	73	67	83	0.05	0.14	
15-Apr-21	65	62	70	69	67	71	0.39	0.06	
16-Apr-21	63	59	67	67	64	70	0.07	0.08	
17-Apr-21	63	60	70	67	64	72	0.99	0.08	
18-Apr-21	67	62	75	69	65	75	0.13	0.12	
19-Apr-21	66	56	75	70	62	80	0.00	0.16	
20-Apr-21	68	59	79	72	66	82	0.00	0.15	
21-Apr-21	65	55	76	72	65	82	0.00	0.17	
22-Apr-21	57	47	68	70	61	81	0.00	0.14	
23-Apr-21	63	49	77	70	63	79	0.00	0.14	
24-Apr-21	72	64	81	70	66	72	4.97	0.08	
25-Apr-21	69	59	78	71	64	79	0.00	0.18	
26-Apr-21	70	55	83	73	63	84	0.00	0.17	
27-Apr-21	74	63	85	76	68	85	0.00	0.18	
28-Apr-21	75	66	86	78	71	87	0.00	0.18	
29-Apr-21	74	62	85	78	71	86	0.00	0.16	
30-Apr-21	75	67	83	79	74	86	0	0.14	
High			89			87			
Low		38			54				
Average	66	56	77	71	64	79			
Days over 95 ^o				0			Total for Month	8.57	3.92
Days below 32 ^o				0			Number of Rain Days	9	
							Historic Average	4.32	
							Deviation from Average	4.25	
							Net Gain/loss (Rain - ET)		4.65

Year Cumulative	
Rain	ET
23.9	10.6
41.0	
19.7	
4.2	
	13.4

April Marianna FAWN 6' Air Temps



April Avg Soil Temps Marianna

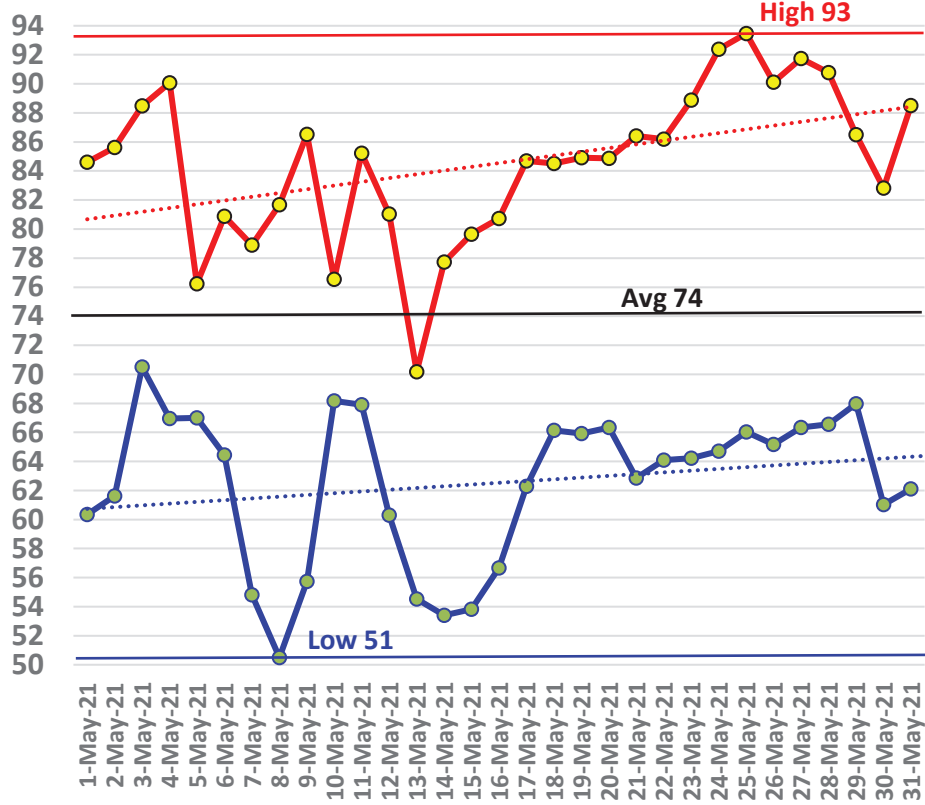


May Daily Weather Data

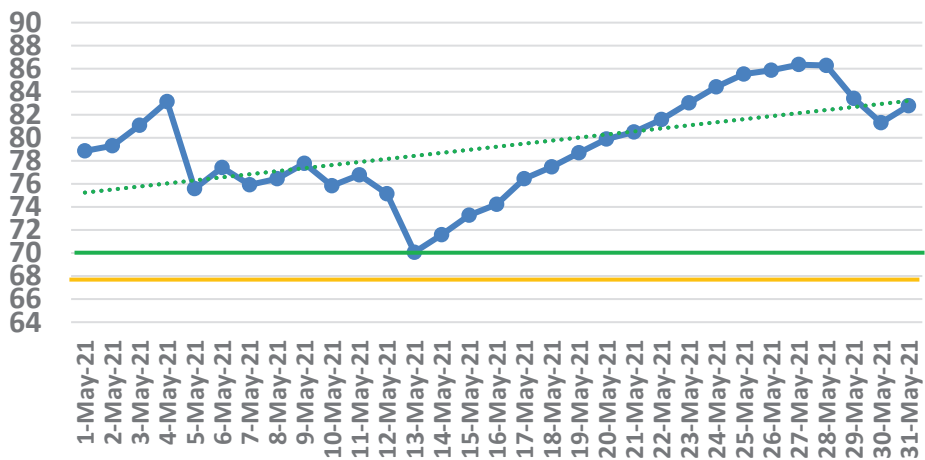
Temperature							Precipitation	
Date	Air Temp 6 ft			Soil Temp 4 inch			Rain	Evapo Trans
	Avg	Min	Max	Avg	Min	Max	Inches	Inches
1-May-21	73	60	85	79	70	90	0.00	0.19
2-May-21	74	62	86	79	73	88	0.01	0.16
3-May-21	79	71	88	81	75	89	0.00	0.19
4-May-21	81	67	90	83	78	91	0.36	0.18
5-May-21	71	67	76	76	73	79	0.05	0.08
6-May-21	73	64	81	77	71	87	0.00	0.2
7-May-21	68	55	79	76	68	85	0.00	0.18
8-May-21	67	51	82	76	67	88	0.00	0.17
9-May-21	73	56	87	78	70	86	0.00	0.17
10-May-21	72	68	77	76	74	78	0.59	0.08
11-May-21	74	68	85	77	72	84	0.20	0.15
12-May-21	70	60	81	75	72	81	0.93	0.12
13-May-21	61	55	70	70	67	74	0.13	0.1
14-May-21	66	53	78	72	64	80	0.00	0.17
15-May-21	68	54	80	73	66	82	0.00	0.18
16-May-21	69	57	81	74	67	83	0.00	0.17
17-May-21	74	62	85	76	69	84	0.00	0.19
18-May-21	76	66	85	77	73	83	0.00	0.16
19-May-21	77	66	85	79	73	85	0.00	0.2
20-May-21	76	66	85	80	74	87	0.00	0.21
21-May-21	76	63	86	81	74	88	0.00	0.21
22-May-21	76	64	86	82	75	89	0.00	0.2
23-May-21	77	64	89	83	76	92	0.00	0.2
24-May-21	79	65	92	84	77	93	0.00	0.21
25-May-21	80	66	93	86	79	94	0.00	0.21
26-May-21	79	65	90	86	80	93	0.00	0.2
27-May-21	78	66	92	86	80	95	0.00	0.21
28-May-21	78	67	91	86	80	94	0.00	0.2
29-May-21	77	68	86	83	79	89	0.29	0.2
30-May-21	72	61	83	81	74	90	0.00	0.21
31-May-21	75	62	89	83	76	91	0	0.2
High			93			95		
Low		51			64			
Average	74	63	85	79	73	87		
				Total for Month			2.56	5.50
Days over 95 ^o				0			Number of Rain Days	8
Days of 100 ^o				0			Historic Average	3.49
Days below 32 ^o				0			Deviation from Average	-0.93
				Net Gain/loss (Rain - ET)				-2.94

Year Cumulative	
Rain	ET
26.5	16.1
49.0	
23.2	
3.3	
	10.4

May Marianna FAWN 6' Air Temps



May Avg Soil Temps Marianna

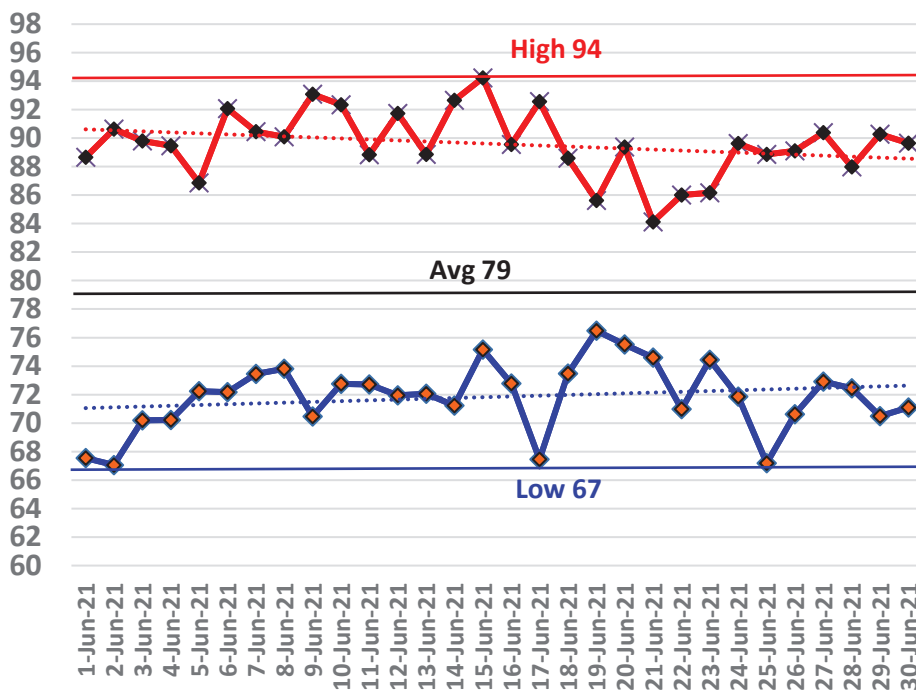


June Daily Weather Data

Date	Temperature						Precipitation			
	Air Temp 6 ft			Soil Temp 4 inch			Rain	Evapo Trans		
	Avg	Min	Max	Avg	Min	Max	Inches	Inches		
1-Jun-21	78	68	89	85	79	92	0.00	0.2		
2-Jun-21	79	67	91	85	79	92	0.00	0.19		
3-Jun-21	79	70	90	86	81	94	0.00	0.17		
4-Jun-21	80	70	89	87	81	93	0.00	0.17		
5-Jun-21	80	72	87	86	82	89	0.00	0.13		
6-Jun-21	80	72	92	85	81	92	0.00	0.17		
7-Jun-21	78	73	90	83	79	88	2.08	0.13		
8-Jun-21	80	74	90	82	78	88	0.02	0.18		
9-Jun-21	81	70	93	83	78	91	0.00	0.23		
10-Jun-21	82	73	92	84	79	90	0.00	0.23		
11-Jun-21	78	73	89	83	80	86	0.34	0.14		
12-Jun-21	78	72	92	82	79	89	0.93	0.17		
13-Jun-21	78	72	89	82	77	89	0.11	0.2		
14-Jun-21	82	71	93	84	78	91	0.00	0.24		
15-Jun-21	82	75	94	85	81	91	0.00	0.19		
16-Jun-21	81	73	90	84	79	90	0.00	N/A		
17-Jun-21	80	67	93	85	79	92	0.00	0.22		
18-Jun-21	80	73	89	85	82	88	0.00	0.15		
19-Jun-21	79	76	86	82	80	84	1.25	0.09		
20-Jun-21	81	76	89	82	79	87	0.04	0.19		
21-Jun-21	77	75	84	81	79	83	0.02	0.1		
22-Jun-21	76	71	86	79	75	83	2.88	0.13		
23-Jun-21	79	74	86	82	78	88	0.00	0.17		
24-Jun-21	78	72	90	82	78	90	0.00	0.18		
25-Jun-21	78	67	89	83	76	90	0.00	0.22		
26-Jun-21	80	71	89	84	79	90	0.00	0.19		
27-Jun-21	80	73	90	85	80	92	0.00	0.2		
28-Jun-21	79	72	88	84	81	89	0.00	0.15		
29-Jun-21	78	70	90	85	80	92	0.00	0.17		
30-Jun-21	77	71	90	84	80	92	0.51	0.17		
High			94			94				
Low		67			75					
Average	79	72	90	84	79	90				
				Total for Month			8.18	5.07		
Days over 95 ^o				0			Number of Rain Days	10		
Days of 100 ^o				0			Historic Average	4.95		
Days below 32 ^o				0			Deviation from Average	3.23		
				Net Gain/loss (Rain - ET)				3.11		

Year Cumulative	
Rain	ET
34.7	21.1
59.0	
28.1	
6.5	
	13.5

June Marianna FAWN 6' Air Temps

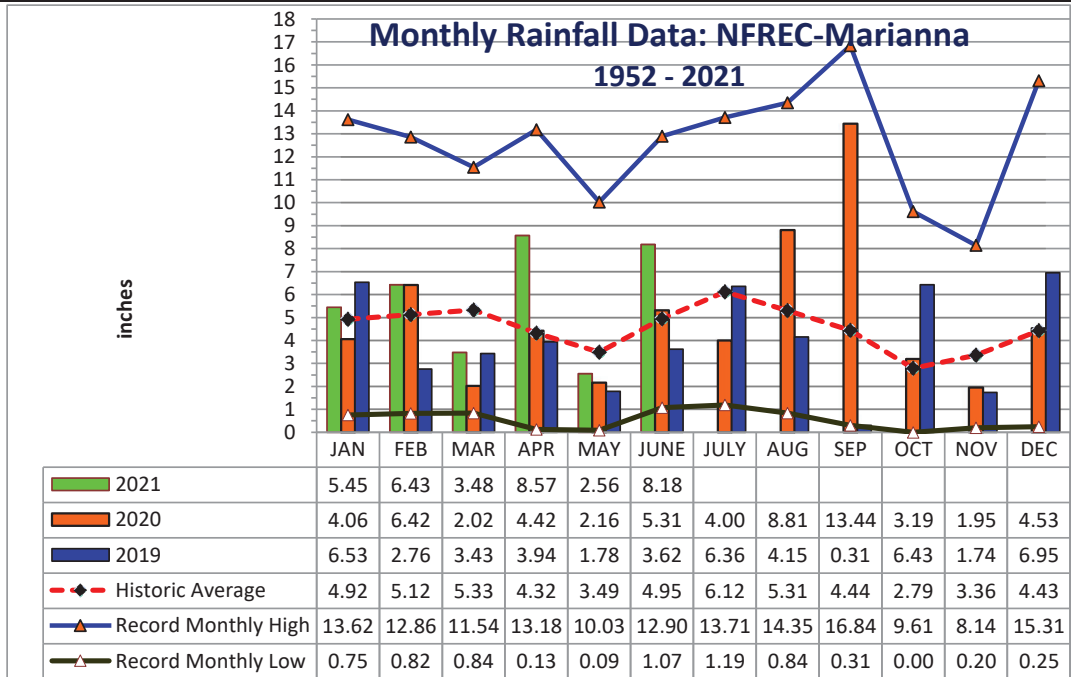




YEAR	JAN	FEB	MAR	APR	MAY	JUNE	JULY	AUG	SEP	OCT	NOV	DEC	TOTAL
1952	1.14	8.88	4.48	2.11	5.13	1.12	5.95	8.81	3.09	0.65	3.26	3.42	48.04
1953	4.84	7.26	3.03	8.43	2.43	3.97	6.84	1.63	6.33	0.65	4.09	15.31	64.81
1954	1.33	3.49	2.62	2.58	1.96	3.46	3.28	2.84	1.72	1.30	2.66	1.44	28.68
1955	3.66	1.83	0.84	5.80	3.03	1.62	6.75	3.75	2.44	2.10	0.72	0.77	33.31
1956	3.59	5.18	3.77	2.04	4.03	5.45	8.52	4.09	6.44	5.08	0.28	3.34	51.81
1957	0.75	2.65	5.17	5.74	4.60	5.75	9.83	5.91	16.84	1.31	6.24	2.22	67.01
1958	4.48	3.61	4.73	7.22	5.57	6.00	8.39	3.45	3.68	1.88	1.75	2.32	53.08
1959	3.67	7.06	8.50	5.73	6.95	3.77	4.83	3.67	3.07	7.93	0.21	1.53	56.92
1960	3.36	7.08	3.41	6.80	3.20	4.75	4.97	4.80	6.22	2.00	0.47	2.35	49.41
1961	4.23	4.15	3.64	5.57	3.97	4.41	3.99	11.09	2.60	0.00	2.84	6.23	52.72
1962	1.72	2.80	8.13	3.28	2.86	3.67	7.97	6.07	3.07	2.82	5.16	1.67	49.22
1963	7.31	3.02	3.18	1.36	3.50	7.99	5.16	1.50	5.25	0.01	4.22	6.05	48.55
1964	10.80	6.81	6.41	9.47	2.23	5.68	9.22	3.07	7.47	9.61	3.35	6.44	80.56
1965	2.63	6.09	5.51	3.96	0.18	9.60	3.26	4.18	4.48	3.41	1.81	3.60	48.71
1966	5.56	9.84	2.57	0.77	5.80	3.13	3.25	9.82	5.09	1.41	2.03	4.62	53.89
1967	8.27	3.32	2.19	0.13	2.61	7.02	6.49	3.58	1.40	1.86	2.40	7.98	47.25
1968	1.28	2.30	3.40	2.50	3.39	1.18	5.45	4.61	2.99	1.41	5.11	5.34	38.96
1969	1.68	3.49	7.08	4.54	3.01	1.71	13.18	3.05	5.64	1.50	1.22	3.80	49.90
1970	4.16	9.20	8.86	1.83	1.81	3.69	5.04	8.01	0.49	4.40	2.21	3.13	52.83
1971	1.97	6.11	7.15	3.17	3.03	3.85	5.20	6.76	2.47	1.84	1.94	3.70	47.19
1972	3.62	6.03	6.41	0.38	2.87	8.89	3.78	5.39	2.14	2.44	3.29	3.77	49.01
1973	8.14	7.71	8.38	7.60	6.87	3.63	11.12	4.51	5.40	0.27	3.64	5.33	72.60
1974	5.24	5.80	2.66	3.40	3.78	1.56	3.29	8.01	4.68	0.84	2.14	2.89	44.29
1975	10.21	6.36	4.91	10.35	3.97	4.10	13.71	5.40	3.81	4.35	2.89	3.28	73.34
1976	6.99	1.50	4.89	1.87	8.89	3.08	3.03	3.47	5.47	6.18	5.72	3.97	55.06
1977	3.47	1.81	6.52	0.88	0.60	6.36	3.55	5.22	9.83	2.59	8.14	4.19	53.16
1978	7.28	3.28	7.25	4.65	6.73	3.79	7.25	4.90	0.98	0.20	6.01	3.65	55.97
1979	7.30	7.78	3.26	7.75	6.22	1.31	7.49	6.30	11.51	0.53	4.47	2.84	66.76
1980	6.58	2.96	11.54	9.29	4.50	3.50	5.87	2.53	4.56	4.71	1.52	0.25	57.81
1981	1.70	5.32	5.94	3.03	2.73	4.74	4.02	2.53	2.44	1.75	0.85	4.94	39.99
1982	4.17	5.61	2.91	5.93	5.39	3.00	7.51	4.42	6.00	2.65	2.34	9.14	59.07
1983	4.92	6.84	8.53	7.88	2.27	5.66	1.19	2.53	8.97	3.52	5.90	7.65	65.86
1984	5.49	5.01	8.62	6.29	2.50	5.31	12.01	5.76	0.32	1.60	1.63	0.80	55.34
1985	4.60	4.46	2.60	1.18	4.44	5.68	3.68	5.58	1.42	7.42	7.91	5.34	54.31
1986	5.68	10.27	3.21	0.83	2.26	1.85	2.75	4.12	2.35	2.22	4.40	5.68	45.62
1987	8.62	5.52	7.23	0.40	4.46	5.43	5.51	4.18	2.27	0.06	4.02	0.81	48.51
1988	5.57	6.40	8.41	2.69	0.28	1.07	5.43	3.98	5.53	1.98	3.28	1.23	45.85
1989	1.59	2.74	4.96	3.63	7.01	12.90	11.19	3.06	3.36	7.20	4.71	5.45	67.80
1990	5.26	4.57	4.55	3.00	3.22	4.02	3.65	2.91	0.85	1.34	0.93	3.42	37.72
1991	13.62	3.44	9.00	5.32	10.03	5.30	10.67	3.89	1.53	1.17	1.60	3.00	68.57
1992	8.37	6.29	7.92	2.50	1.41	11.16	8.69	6.72	3.19	2.08	7.40	2.93	68.66
1993	12.00	3.38	7.41	1.50	1.60	4.18	6.68	3.89	3.44	2.90	2.27	3.63	52.88
1994	8.64	2.53	6.25	4.34	1.82	11.41	10.95	9.08	6.44	7.62	2.53	3.79	75.40
1995	5.23	3.13	4.29	4.35	3.90	5.56	3.02	6.16	0.86	7.51	4.12	1.78	49.91
1996	3.64	5.99	8.47	5.76	1.50	5.43	2.83	14.28	5.32	3.81	2.01	3.65	62.69
1997	6.68	5.29	2.63	10.08	5.91	6.41	5.73	4.65	3.78	2.10	6.85	8.44	68.55
1998	6.28	8.30	6.11	2.24	1.45	2.35	4.37	2.20	16.31	0.30	2.05	1.98	53.94
1999	6.95	2.90	3.61	1.50	6.71	8.99	8.64	4.02	4.33	3.13	3.56	2.50	56.84

YEAR	JAN	FEB	MAR	APR	MAY	JUNE	JULY	AUG	SEP	OCT	NOV	DEC	TOTAL
2000	3.78	4.96	4.48	4.05	0.09	4.00	3.40	7.15	7.20	0.71	4.43	3.21	47.46
2001	2.16	0.82	10.00	1.99	2.52	8.24	4.66	8.21	1.90	1.51	1.70	0.78	44.49
2002	3.82	2.44	5.51	5.78	2.19	3.45	10.34	3.30	11.83	7.36	7.76	5.99	69.77
2003	2.30	7.03	8.18	4.89	3.11	6.11	7.84	5.99	2.39	3.58	3.04	3.12	57.58
2004	3.19	7.66	0.90	4.37	1.19	6.66	4.92	1.67	10.01	3.89	4.97	3.25	52.68
2005	3.33	2.31	9.05	7.04	1.67	7.47	9.44	11.71	1.62	0.03	3.15	4.81	61.63
2006	4.82	3.90	0.91	1.61	4.97	1.99	2.22	5.18	0.91	3.09	3.41	5.43	38.44
2007	5.99	2.45	1.10	0.99	1.57	3.97	3.94	4.18	1.27	4.79	1.89	4.03	36.17
2008	4.26	9.00	9.11	4.28	1.46	8.64	4.02	9.29	0.74	5.11	3.18	8.23	67.32
2009	2.33	3.26	7.11	7.73	9.17	2.78	3.88	3.19	5.22	3.39	2.35	9.57	59.98
2010	7.53	3.99	3.41	4.01	5.09	2.92	2.31	0.84	1.33	0.22	5.82	0.63	38.10
2011	4.33	4.04	5.00	0.92	0.78	1.66	5.11	1.87	2.26	1.84	1.94	3.75	33.50
2012	3.79	7.49	5.94	3.17	1.42	7.35	5.05	14.35	5.17	1.75	1.30	4.10	60.88
2013	1.05	12.86	2.99	3.54	0.64	3.72	13.39	13.17	2.14	1.96	3.91	4.44	63.81
2014	2.15	4.99	7.70	13.18	4.03	2.32	5.69	2.55	6.03	2.03	5.93	5.32	61.92
2015	3.4	3.8	2.17	9.52	3.55	4.04	4.85	2.75	4.15	1.00	7.33	8.67	55.23
2016	4.8	3.51	8.15	4.94	1.74	3.49	2.79	7.28	4.19	0.22	0.8	12.33	54.24
2017	7.28	3.78	2.11	2.12	4.28	11.53	6.82	4.47	3.75	0.97	0.2	2.76	50.07
2018	4.26	10.50	5.38	3.72	5.06	7.97	5.99	5.67	2.67	5.66	6.94	11.86	75.68
2019	6.53	2.76	3.43	3.94	1.78	3.62	6.36	4.15	0.31	6.43	1.74	6.95	48.00
2020	4.06	6.42	2.02	4.42	2.16	5.31	4.00	8.81	13.44	3.19	1.95	4.53	60.31
2021	5.45	6.43	3.48	8.57	2.56	8.18							34.67

Deviation from the Average Monthly Rainfall													
Inches	0.53	1.31	-1.85	4.25	-0.93	3.23							6.54
Monthly Average Rainfall, 1952-2020													
AVG.	4.92	5.12	5.33	4.32	3.49	4.95	6.12	5.31	4.44	2.79	3.36	4.43	54.57
% of Annual Rainfall Occuring each Month													
	9.0%	9.4%	9.8%	7.9%	6.4%	9.1%	11.2%	9.7%	8.1%	5.1%	6.2%	8.1%	
Record High/Low for the Month													
LOW	0.75	0.82	0.84	0.13	0.09	1.07	1.19	0.84	0.31	0.00	0.20	0.25	28.68
HIGH	13.62	12.86	11.54	13.18	10.03	12.90	13.71	14.35	16.84	9.61	8.14	15.31	80.56



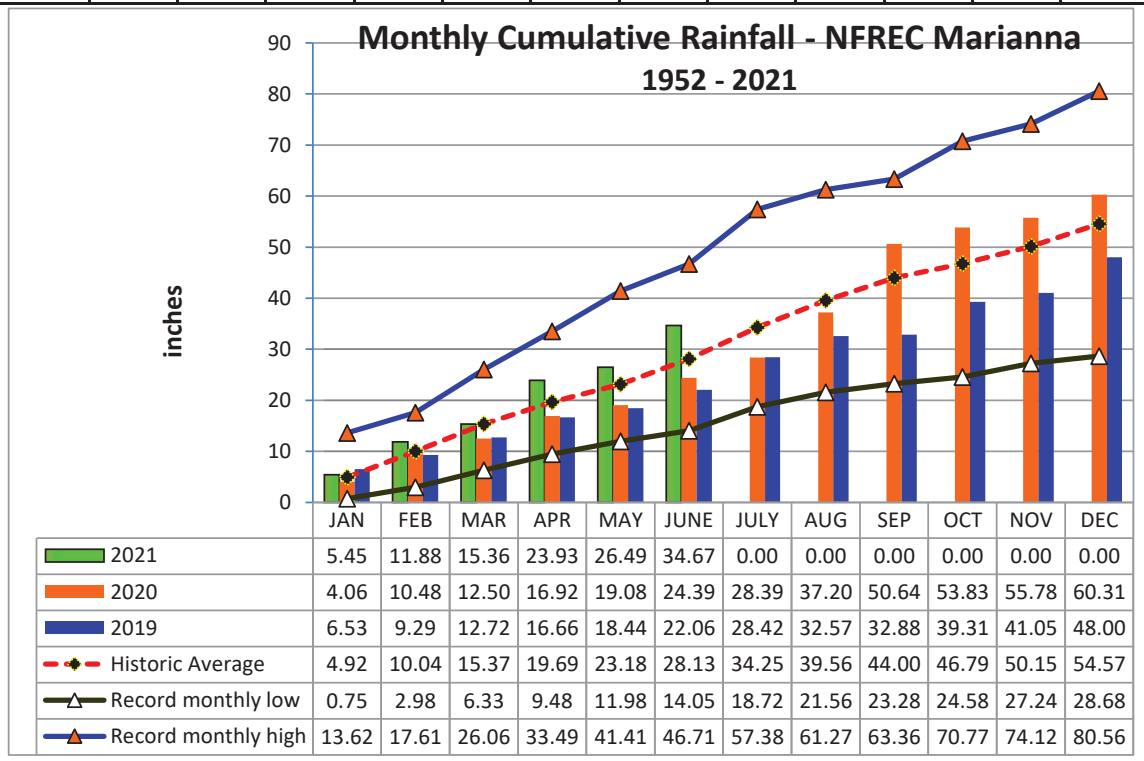
Jackson County
Monthly Cumulative Rainfall, 1952 -2020
North Florida Research & Education Center Marianna,
FL



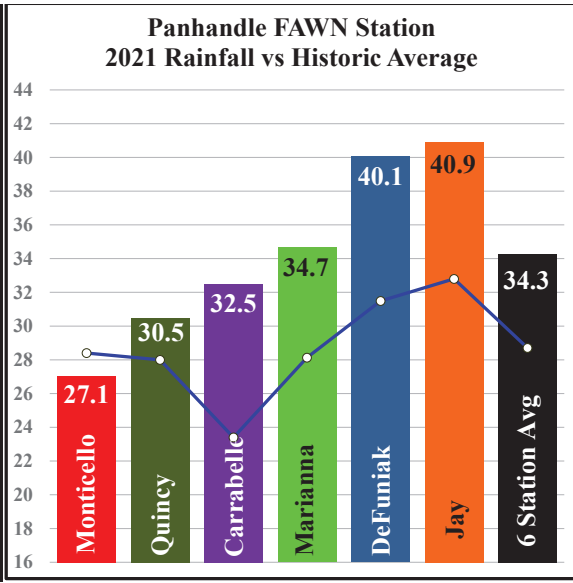
YEAR	JAN	FEB	MAR	APR	MAY	JUNE	JULY	AUG	SEP	OCT	NOV	DEC
1952	1.14	10.02	14.50	16.61	21.74	22.86	28.81	37.62	40.71	41.36	44.62	48.04
1953	4.84	12.10	15.13	23.56	25.99	29.96	36.80	38.43	44.76	45.41	49.50	64.81
1954	1.33	4.82	7.44	10.02	11.98	15.44	18.72	21.56	23.28	24.58	27.24	28.68
1955	3.66	5.49	6.33	12.13	15.16	16.78	23.53	27.28	29.72	31.82	32.54	33.31
1956	3.59	8.77	12.54	14.58	18.61	24.06	32.58	36.67	43.11	48.19	48.47	51.81
1957	0.75	3.40	8.57	14.31	18.91	24.66	34.49	40.40	57.24	58.55	64.79	67.01
1958	4.48	8.09	12.82	20.04	25.61	31.61	40.00	43.45	47.13	49.01	50.76	53.08
1959	3.67	10.73	19.23	24.96	31.91	35.68	40.51	44.18	47.25	55.18	55.39	56.92
1960	3.36	10.44	13.85	20.65	23.85	28.60	33.57	38.37	44.59	46.59	47.06	49.41
1961	4.23	8.38	12.02	17.59	21.56	25.97	29.96	41.05	43.65	43.65	46.49	52.72
1962	1.72	4.52	12.65	15.93	18.79	22.46	30.43	36.50	39.57	42.39	47.55	49.22
1963	7.31	10.33	13.51	14.87	18.37	26.36	31.52	33.02	38.27	38.28	42.50	48.55
1964	10.80	17.61	24.02	33.49	35.72	41.40	50.62	53.69	61.16	70.77	74.12	80.56
1965	2.63	8.72	14.23	18.19	18.37	27.97	31.23	35.41	39.89	43.30	45.11	48.71
1966	5.56	15.40	17.97	18.74	24.54	27.67	30.92	40.74	45.83	47.24	49.27	53.89
1967	8.27	11.59	13.78	13.91	16.52	23.54	30.03	33.61	35.01	36.87	39.27	47.25
1968	1.28	3.58	6.98	9.48	12.87	14.05	19.50	24.11	27.10	28.51	33.62	38.96
1969	1.68	5.17	12.25	16.79	19.80	21.51	34.69	37.74	43.38	44.88	46.10	49.90
1970	4.16	13.36	22.22	24.05	25.86	29.55	34.59	42.60	43.09	47.49	49.70	52.83
1971	1.97	8.08	15.23	18.40	21.43	25.28	30.48	37.24	39.71	41.55	43.49	47.19
1972	3.62	9.65	16.06	16.44	19.31	28.20	31.98	37.37	39.51	41.95	45.24	49.01
1973	8.14	15.85	24.23	31.83	38.70	42.33	53.45	57.96	63.36	63.63	67.27	72.60
1974	5.24	11.04	13.70	17.10	20.88	22.44	25.73	33.74	38.42	39.26	41.40	44.29
1975	10.21	16.57	21.48	31.83	35.80	39.90	53.61	59.01	62.82	67.17	70.06	73.34
1976	6.99	8.49	13.38	15.25	24.14	27.22	30.25	33.72	39.19	45.37	51.09	55.06
1977	3.47	5.28	11.80	12.68	13.28	19.64	23.19	28.41	38.24	40.83	48.97	53.16
1978	7.28	10.56	17.81	22.46	29.19	32.98	40.23	45.13	46.11	46.31	52.32	55.97
1979	7.30	15.08	18.34	26.09	32.31	33.62	41.11	47.41	58.92	59.45	63.92	66.76
1980	6.58	9.54	21.08	30.37	34.87	38.37	44.24	46.77	51.33	56.04	57.56	57.81
1981	1.70	7.02	12.96	15.99	18.72	23.46	27.48	30.01	32.45	34.20	35.05	39.99
1982	4.17	9.78	12.69	18.62	24.01	27.01	34.52	38.94	44.94	47.59	49.93	59.07
1983	4.92	11.76	20.29	28.17	30.44	36.10	37.29	39.82	48.79	52.31	58.21	65.86
1984	5.49	10.50	19.12	25.41	27.91	33.22	45.23	50.99	51.31	52.91	54.54	55.34
1985	4.60	9.06	11.66	12.84	17.28	22.96	26.64	32.22	33.64	41.06	48.97	54.31
1986	5.68	15.95	19.16	19.99	22.25	24.10	26.85	30.97	33.32	35.54	39.94	45.62
1987	8.62	14.14	21.37	21.77	26.23	31.66	37.17	41.35	43.62	43.68	47.70	48.51
1988	5.57	11.97	20.38	23.07	23.35	24.42	29.85	33.83	39.36	41.34	44.62	45.85
1989	1.59	4.33	9.29	12.92	19.93	32.83	44.02	47.08	50.44	57.64	62.35	67.80
1990	5.26	9.83	14.38	17.38	20.60	24.62	28.27	31.18	32.03	33.37	34.30	37.72
1991	13.62	17.06	26.06	31.38	41.41	46.71	57.38	61.27	62.80	63.97	65.57	68.57
1992	8.37	14.66	22.58	25.08	26.49	37.65	46.34	53.06	56.25	58.33	65.73	68.66
1993	12.00	15.38	22.79	24.29	25.89	30.07	36.75	40.64	44.08	46.98	49.25	52.88
1994	8.64	11.17	17.42	21.76	23.58	34.99	45.94	55.02	61.46	69.08	71.61	75.40
1995	5.23	8.36	12.65	17.00	20.90	26.46	29.48	35.64	36.50	44.01	48.13	49.91
1996	3.64	9.63	18.10	23.86	25.36	30.79	33.62	47.90	53.22	57.03	59.04	62.69
1997	6.68	11.97	14.60	24.68	30.59	37.00	42.73	47.38	51.16	53.26	60.11	68.55
1998	6.28	14.58	20.69	22.93	24.38	26.73	31.10	33.30	49.61	49.91	51.96	53.94
1999	6.95	9.85	13.46	14.96	21.67	30.66	39.30	43.32	47.65	50.78	54.34	56.84

YEAR	JAN	FEB	MAR	APR	MAY	JUNE	JULY	AUG	SEP	OCT	NOV	DEC
2000	3.78	8.74	13.22	17.27	17.36	21.36	24.76	31.91	39.11	39.82	44.25	47.46
2001	2.16	2.98	12.98	14.97	17.49	25.73	30.39	38.60	40.50	42.01	43.71	44.49
2002	3.82	6.26	11.77	17.55	19.74	23.19	33.53	36.83	48.66	56.02	63.78	69.77
2003	2.30	9.33	17.51	22.40	25.51	31.62	39.46	45.45	47.84	51.42	54.46	57.58
2004	3.19	10.85	11.75	16.12	17.31	23.97	28.89	30.56	40.57	44.46	49.43	52.68
2005	3.33	5.64	14.69	21.73	23.40	30.87	40.31	52.02	53.64	53.67	56.82	61.63
2006	4.82	8.72	9.63	11.24	16.21	18.20	20.42	25.60	26.51	29.60	33.01	38.44
2007	5.99	8.44	9.54	10.53	12.10	16.07	20.01	24.19	25.46	30.25	32.14	36.17
2008	4.26	13.26	22.37	26.65	28.11	36.75	40.77	50.06	50.80	55.91	59.09	67.32
2009	2.33	5.59	12.70	20.43	29.60	32.38	36.26	39.45	44.67	48.06	50.41	59.98
2010	7.53	11.52	14.93	18.94	24.03	26.95	29.26	30.10	31.43	31.65	37.47	38.10
2011	4.33	8.37	13.37	14.29	15.07	16.73	21.84	23.71	25.97	27.81	29.75	33.50
2012	3.79	11.28	17.22	20.39	21.81	29.16	34.21	48.56	53.73	55.48	56.78	60.88
2013	1.05	13.91	16.90	20.44	21.08	24.80	38.19	51.36	53.50	55.46	59.37	63.81
2014	2.15	7.14	14.84	28.02	32.05	34.37	40.06	42.61	48.64	50.67	56.60	61.92
2015	3.40	7.20	9.37	18.89	22.44	26.48	31.33	34.08	38.23	39.23	46.56	55.23
2016	4.80	8.31	16.46	21.40	23.14	26.63	29.42	36.70	40.89	41.11	41.91	54.24
2017	7.28	11.06	13.17	15.29	19.57	31.10	37.92	42.39	46.14	47.11	47.31	50.07
2018	4.26	14.76	20.14	23.86	28.92	36.89	42.88	48.55	51.22	56.88	63.82	75.68
2019	6.53	9.29	12.72	16.66	18.44	22.06	28.42	32.57	32.88	39.31	41.05	48.00
2020	4.06	10.48	12.50	16.92	19.08	24.39	28.39	37.20	50.64	53.83	55.78	60.31
2021	5.45	11.88	15.36	23.93	26.49	34.67						

Deviation from the Average Accumulation												
Inches	0.53	1.84	-0.01	4.24	3.31	6.54						
Average Accumulation, 1952-2020												
Inches	4.92	10.04	15.37	19.69	23.18	28.13	34.25	39.56	44.00	46.79	50.15	54.57
Record High/Low Accumulation												
LOW	0.75	2.98	6.33	9.48	11.98	14.05	18.72	21.56	23.28	24.58	27.24	28.68
HIGH	13.62	17.61	26.06	33.49	41.41	46.71	57.38	61.27	63.36	70.77	74.12	80.56



2021 UF/IFAS FAWN Panhandle Weather Station Summary								
FAWN Station	Data	Jan	Feb	Mar	Apr	May	June	Total
Monticello	Rain	6.7	4.3	2.4	2.7	1.6	9.3	27.1
	Hist Avg	4.5	4.6	6.1	4.1	3.4	5.7	28.4
	Deviation	2.2	-0.3	-3.7	-1.4	-1.8	3.6	-1.3
Quincy	Rain	7.2	6.2	3.0	3.4	1.3	9.5	30.5
	Hist Avg	5.0	4.3	5.6	3.7	4.2	5.2	28.0
	Deviation	2.2	1.9	-2.6	-0.3	-2.9	4.3	2.5
Carrabelle	Rain	8.3	4.1	2.9	4.6	4.5	8.1	32.5
	Hist Avg	3.8	3.7	4.9	3.0	2.7	5.3	23.4
	Deviation	4.5	0.4	-2.0	1.6	1.8	2.8	9.1
Marianna	Rain	5.5	6.4	3.5	8.6	2.6	8.2	34.7
	Hist Avg	4.9	5.1	5.3	4.3	3.5	5.0	28.1
	Deviation	0.5	1.3	-1.9	4.3	-0.9	3.2	6.5
DeFuniak	Rain	4.3	4.7	6.4	10.5	5.3	8.9	40.1
	Hist Avg	4.9	5.4	5.6	3.9	4.5	7.1	31.5
	Deviation	-0.7	-0.7	0.8	6.6	0.8	1.8	8.6
Jay	Rain	2.0	5.1	5.4	8.3	7.4	12.6	40.9
	Hist Avg	5.5	5.3	6.6	4.8	4.8	5.8	32.8
	Deviation	-3.5	-0.2	-1.2	3.5	2.6	6.8	8.1
6 Station Average		5.7	5.1	3.9	6.3	3.8	9.4	34.3
6 Station Historic Average		4.8	4.7	5.7	4.0	3.9	5.7	28.7
Deviation from Avg		0.9	0.4	-1.8	2.4	-0.1	3.8	5.6



FAWN Station	Monticello	Quincy	Carrabelle	Marianna	DeFuniak	Jay	Average
Rainfall	27.1	30.5	32.5	34.7	40.1	40.9	34.3
Historic Average	28.4	28.0	23.4	28.1	31.5	32.8	28.7