



Jackson County 2022 Weather Data

71 Years of Weather Data Recorded at the UF/IFAS Marianna North Florida Research and Education Center



Doug Mayo
Jackson County Extension Director

1952-2008 Rainfall Data compiled by
Ed Jowers, Emeritus County Extension Director

Data provided by Florida Automated Weather Station (FAWN)
UF/IFAS North Florida Research and Education Center
Greenwood, Florida



<http://fawn.ifas.ufl.edu/>

Tower Name	Tower Number	Latitude Degree, Minutes	Latitude Degrees, Minutes, Seconds	Latitude Degrees Decimal	Longitude Degree, Minutes	Longitude Degrees, Minutes, Seconds	Longitude Degrees Decimal	Elevation Feet
Marianna	130.00	N 30°51.000'	N 30°50'00.00"	N 30.85000°	-85°09.910'	-85°09'54.60"	-85.16516°	115'

2022 UF/IFAS FAWN Marianna Weather Summary

Month	Rainfall Inches	Dev from Hist Avg	6' Air Temp			Soil Temp			Wind MPH	
			High	Low	Avg	High	Low	Avg	Avg	High
January	5.24	0.31	82	24	49	75	39	53	5.8	48.7
February	1.14	-4.00	83	30	56	74	45	59	5.5	30.8
March	11.24	5.94	85	30	63	83	48	66	5.9	50.0
April	5.77	1.39	86	43	67	86	58	71	5.5	40.1
May	7.84	4.36	93	56	75	94	69	80	4.5	38.3
June	1.62	-3.38	100	68	82	102	77	88	4.1	38.0
July	5.80	-0.34	96	70	81	102	78	86	3.7	31.7
August	4.78	-0.58	94	70	79	97	78	85	3.1	32.1
September	0.50	-3.95	96	56	77	96	74	84	3.9	29.9
October	2.13	-0.68	89	35	66	86	60	73	3.9	27.3
November	2.83	-0.49	88	30	62	78	49	65	5.0	35.1
2021	48.89	-1.43	100	24	69	102	39	74	4.6	50

Total days <32°

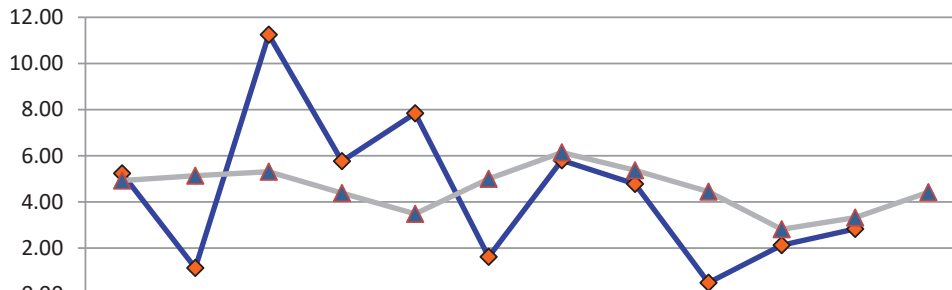
9

Total days >95°

14

Data source: UF/IFAS Florida Automated Weather Network Marianna Station

Monthly Rainfall @ Marianna FAWN



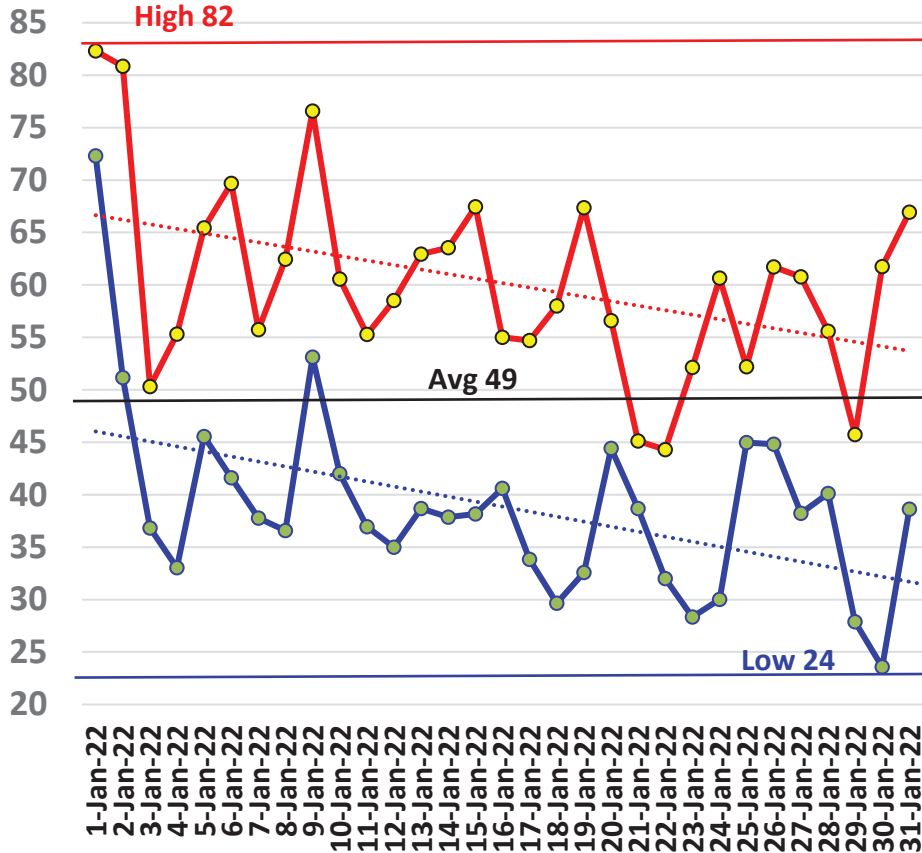
	JAN	FEB	MAR	APR	MAY	JUNE	JULY	AUG	SEP	OCT	NOV	DEC
2022	5.24	1.14	11.24	5.77	7.84	1.62	5.80	4.78	0.50	2.13	2.83	
Historic Avg	4.93	5.14	5.30	4.38	3.48	5.00	6.14	5.36	4.45	2.81	3.32	4.42

◆ 2022 ▲ Historic Avg

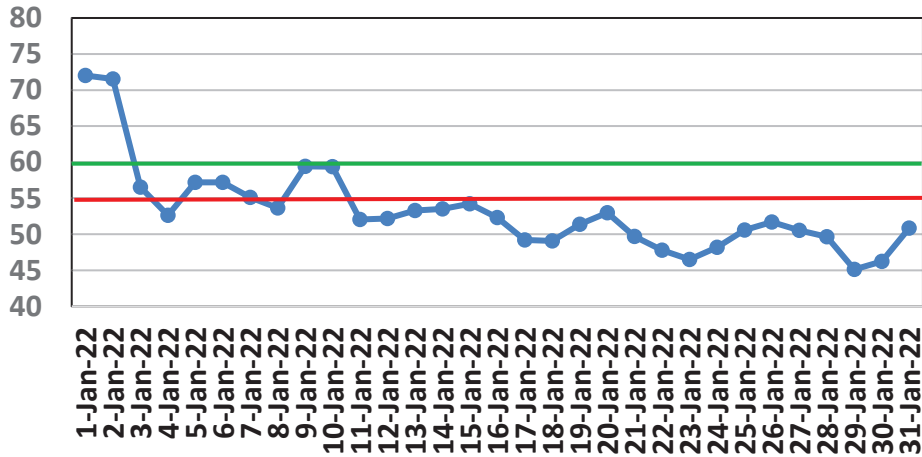
January Daily Weather Data

Temperature							Precipitation		Wind				
	Air Temp 6 ft			Soil Temp 4 inch			Rain	Evapo Transpo	Avg Wind	Min Wind	Max Wind		
Date	Avg	Min	Max	Avg	Min	Max	Inches	Inches	mph	mph	mph		
1-Jan-22	76	72	82	72	70	75	0.00	0.08	8.7	0.7	28.1		
2-Jan-22	72	51	81	72	67	75	1.43	0.07	10.4	0.1	48.7		
3-Jan-22	41	37	50	57	51	66	0.00	0.04	11.3	0.9	38.2		
4-Jan-22	44	33	55	53	48	57	0.04	0.04	2.8	0.0	10.9		
5-Jan-22	54	46	65	57	54	62	0.00	0.05	3.5	0.0	23.0		
6-Jan-22	55	42	70	57	52	61	0.31	0.06	5.0	0.1	25.5		
7-Jan-22	45	38	56	55	51	59	0.00	0.04	5.4	0.0	23.5		
8-Jan-22	49	37	62	54	48	59	0.00	0.04	2.2	0.0	11.3		
9-Jan-22	64	53	77	59	54	64	0.65	0.06	5.4	0.0	34.7		
10-Jan-22	54	42	61	59	52	62	0.00	0.05	7.2	0.1	21.2		
11-Jan-22	44	37	55	52	48	57	0.00	0.04	4.6	0.1	18.9		
12-Jan-22	47	35	59	52	48	57	0.00	0.04	2.5	0.0	11.3		
13-Jan-22	50	39	63	53	49	58	0.00	0.04	5.4	0.0	18.8		
14-Jan-22	50	38	64	53	49	59	0.00	0.04	3.0	0.0	10.0		
15-Jan-22	53	38	67	54	49	59	1.64	0.05	7.5	0.1	34.6		
16-Jan-22	45	41	55	52	48	56	0.32	0.05	15.1	1.6	37.9		
17-Jan-22	43	34	55	49	45	55	0.00	0.04	9.7	0.3	24.6		
18-Jan-22	42	30	58	49	43	56	0.00	0.04	1.8	0.0	10.6		
19-Jan-22	49	33	67	51	45	59	0.00	0.05	3.4	0.0	11.7		
20-Jan-22	52	44	57	53	51	55	0.26	0.05	5.3	0.0	21.8		
21-Jan-22	41	39	45	50	48	52	0.09	0.04	7.4	0.1	18.0		
22-Jan-22	40	32	44	48	45	49	0.01	0.04	6.0	0.0	17.1		
23-Jan-22	38	28	52	46	41	53	0.00	0.04	3.8	0.1	17.5		
24-Jan-22	45	30	61	48	42	55	0.00	0.05	2.7	0.0	13.1		
25-Jan-22	48	45	52	51	49	52	0.49	0.04	2.4	0.0	12.5		
26-Jan-22	51	45	62	52	49	56	0.00	0.06	6.1	0.1	19.6		
27-Jan-22	47	38	61	51	46	57	0.00	0.05	3.1	0.0	13.8		
28-Jan-22	46	40	56	50	46	54	0.00	0.05	6.4	0.0	25.3		
29-Jan-22	37	28	46	45	41	50	0.00	0.05	9.8	0.0	27.3		
30-Jan-22	44	24	62	46	39	54	0.00	0.06	4.9	0.0	26.8		
31-Jan-22	52	39	67	51	45	58	0	0.07	4.0	0.0	16.5		
High			82			75		High			48.7		
Low		24			39			Low		0.0			
Average	49	39	60	53	49	58		Average	5.8				
Days over 95 ^u 0				Total for Month			5.24	1.52					
				# of Rain Days			10						
				Historic Average			4.93						
				Deviation from Avg			0.31						
Days below 32 ^v 5										3.72			
Net Gain/loss (Rain - ET)													

Jan Marianna FAWN 6' Air Temps



January Avg Soil Temps Marianna

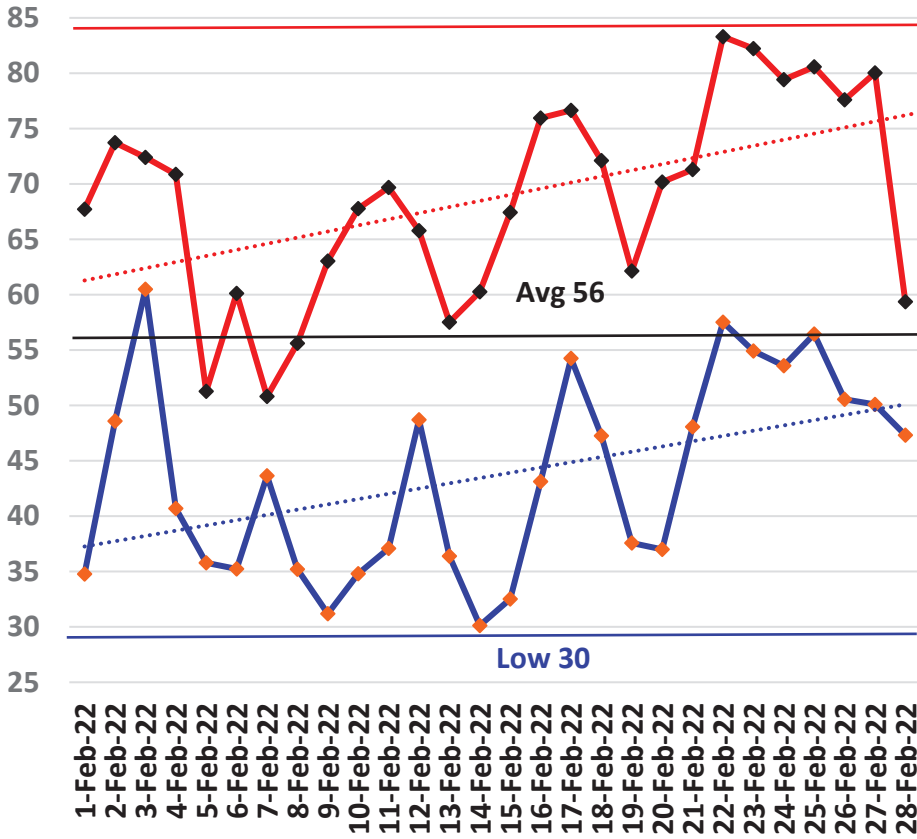


Corn

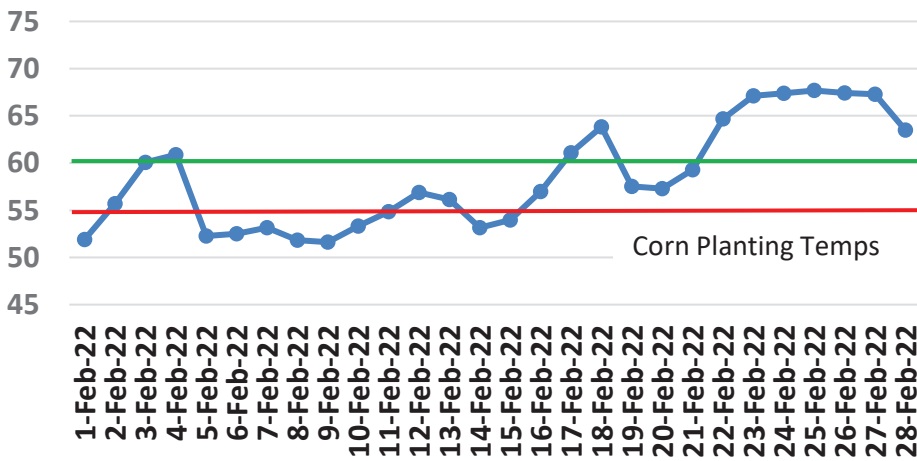
February Daily Weather Data

Temperature							Precipitation		Wind			
Date	Air Temp 6 ft			Soil Temp 4 inch			Rain	Evapo Trans	Avg Wind	Min Wind	Max Wind	
	Avg	Min	Max	Avg	Min	Max	Inches	Inches	mph	mph	mph	
1-Feb-22	51	35	68	52	46	59	0.00	0.07	5.1	0.0	19.5	
2-Feb-22	61	49	74	56	51	61	0.00	0.08	8.8	0.2	28.6	
3-Feb-22	68	60	72	60	57	63	0.00	0.06	10.8	2.4	27.8	
4-Feb-22	57	41	71	61	54	64	0.95	0.07	9.5	0.2	27.4	
5-Feb-22	42	36	51	52	49	57	0.01	0.06	8.0	0.1	23.4	
6-Feb-22	47	35	60	53	46	60	0.00	0.06	3.3	0.0	16.3	
7-Feb-22	47	44	51	53	52	55	0.10	0.04	3.7	0.1	11.9	
8-Feb-22	46	35	56	52	49	56	0.00	0.06	3.8	0.0	13.8	
9-Feb-22	47	31	63	52	45	60	0.00	0.07	2.9	0.0	13.7	
10-Feb-22	51	35	68	53	47	61	0.00	0.07	2.6	0.0	11.1	
11-Feb-22	53	37	70	55	48	62	0.00	0.08	2.8	0.0	14.4	
12-Feb-22	56	49	66	57	53	61	0.00	0.06	1.9	0.0	10.9	
13-Feb-22	50	36	58	56	51	60	0.00	0.07	8.8	0.1	27.8	
14-Feb-22	45	30	60	53	47	60	0.00	0.07	3.4	0.0	15.0	
15-Feb-22	50	33	67	54	48	61	0.00	0.08	5.5	0.0	27.0	
16-Feb-22	59	43	76	57	51	63	0.00	0.09	5.9	0.1	24.8	
17-Feb-22	67	54	77	61	56	65	0.01	0.09	10.6	0.1	30.8	
18-Feb-22	60	47	72	64	59	67	0.07	0.09	8.5	0.5	24.5	
19-Feb-22	48	38	62	58	53	63	0.00	0.08	7.4	0.1	25.8	
20-Feb-22	53	37	70	57	51	65	0.00	0.09	2.8	0.0	16.8	
21-Feb-22	60	48	71	59	55	63	0.00	0.07	2.8	0.0	12.0	
22-Feb-22	69	58	83	65	60	71	0.00	0.12	6.0	0.0	24.9	
23-Feb-22	68	55	82	67	62	74	0.00	0.11	3.5	0.1	14.8	
24-Feb-22	67	54	79	67	62	73	0.00	0.10	4.4	0.0	18.8	
25-Feb-22	68	56	81	68	64	73	0.00	0.09	5.1	0.1	16.6	
26-Feb-22	63	51	78	67	62	74	0.00	0.11	4.3	0.0	13.3	
27-Feb-22	63	50	80	67	62	74	0.00	0.11	5.8	0.0	21.4	
28-Feb-22	54	47	59	63	60	67	0.00	0.05	6.5	0.1	15.9	
High			83			74		High			30.8	
Low		30			45			Low		0.0		
Average	56	44	69	59	54	64		Average	5.5			
Days over 95 ^u 0				Total for Month			1.14	2.20	Cumulative for Year			
				# of Rain Days			5			Rain 6.4		
Days below 32 ^u 2				Historic Average			5.14			Avg 10.1		
				Deviation from Avg			-4.00			Dev -3.7		
Net Gain/loss (Rain - ET)								-1.06		Net 2.7		

February Marianna FAWN 6' Air Temps **High 83**



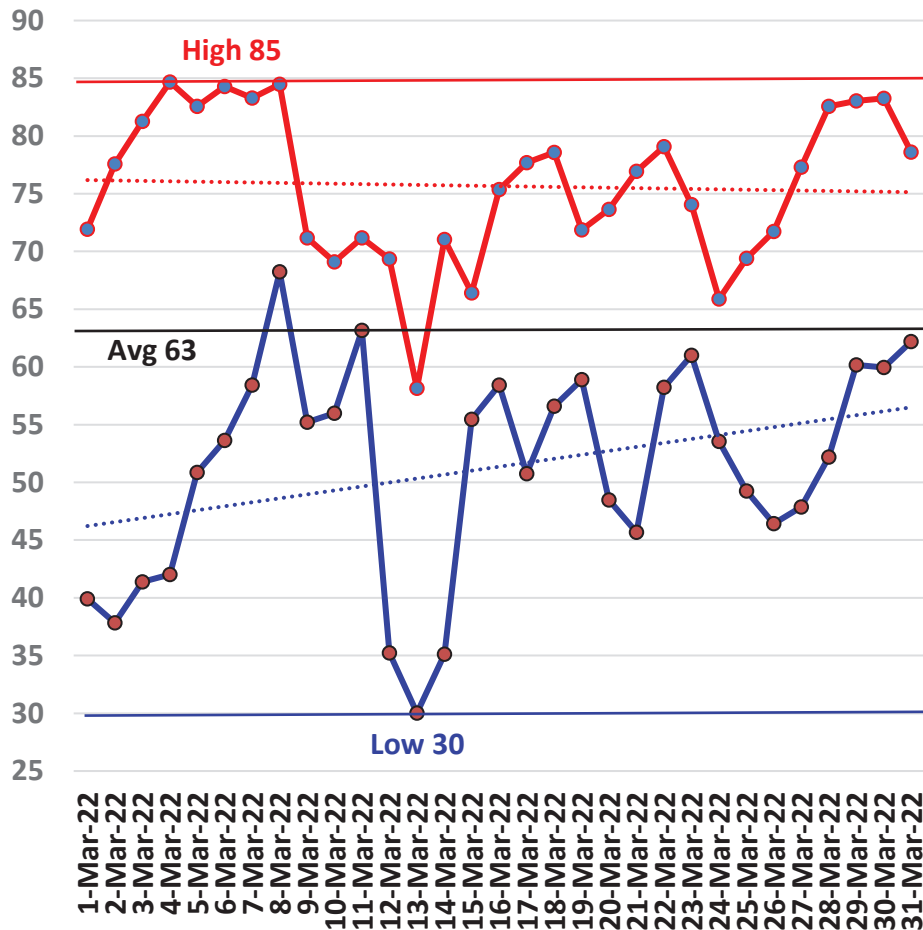
February Avg Soil Temps Marianna



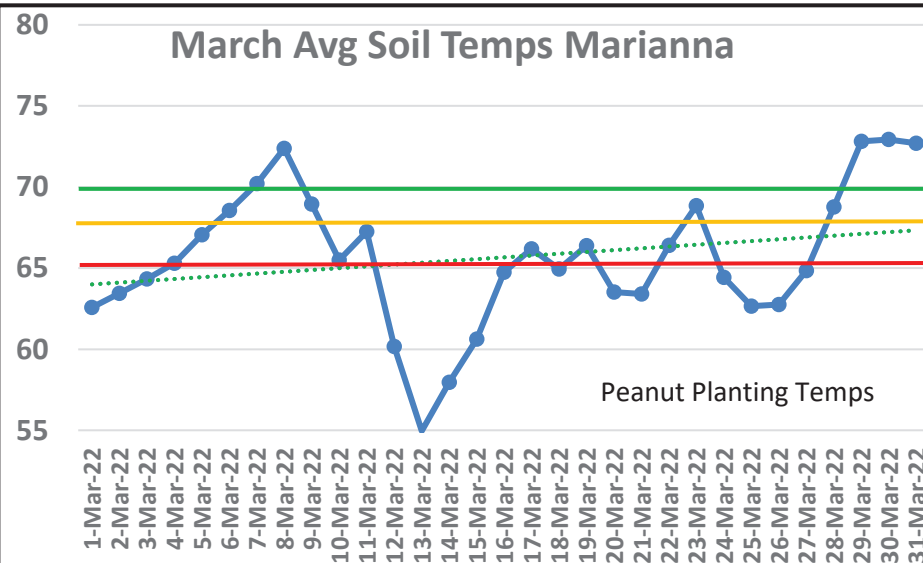
March Daily Weather Data

Date	Temperature						Precipitation		Wind		
	Air Temp 6 ft			Soil Temp 4 inch			Rain	Evapo Trans	Avg Wind	Min Wind	Max Wind
	Avg	Min	Max	Avg	Min	Max	Inches	Inches	mph	mph	mph
1-Mar-22	55	40	72	63	56	70	0.00	0.09	2.7	0.0	13.0
2-Mar-22	58	38	78	63	56	72	0.00	0.10	2.2	0.0	14.5
3-Mar-22	60	41	81	64	57	73	0.00	0.10	2.5	0.1	11.6
4-Mar-22	63	42	85	65	58	73	0.00	0.11	3.5	0.0	19.5
5-Mar-22	66	51	83	67	61	75	0.00	0.12	5.9	0.1	22.9
6-Mar-22	69	54	84	69	63	75	0.00	0.12	6.1	0.1	23.4
7-Mar-22	71	58	83	70	65	76	0.00	0.12	6.1	0.2	28.3
8-Mar-22	73	68	84	72	70	77	0.00	0.11	6.0	0.1	24.9
9-Mar-22	64	55	71	69	64	71	0.37	0.06	7.1	0.1	22.5
10-Mar-22	61	56	69	65	63	69	0.06	0.07	3.3	0.0	16.2
11-Mar-22	67	63	71	67	66	69	0.93	0.06	4.6	0.1	22.8
12-Mar-22	47	35	69	60	52	68	0.29	0.10	14.2	1.1	50.0
13-Mar-22	43	30	58	55	48	62	0.00	0.08	3.4	0.0	15.5
14-Mar-22	54	35	71	58	51	66	0.00	0.10	3.2	0.0	17.1
15-Mar-22	60	55	66	61	59	62	0.83	0.06	8.6	0.0	32.8
16-Mar-22	66	58	75	65	61	70	3.04	0.11	5.4	0.0	21.8
17-Mar-22	64	51	78	66	59	74	0.00	0.12	3.2	0.0	14.5
18-Mar-22	64	57	79	65	63	70	3.42	0.08	7.5	0.2	26.0
19-Mar-22	66	59	72	66	63	71	0.22	0.09	6.5	0.1	21.4
20-Mar-22	60	48	74	64	56	71	0.00	0.12	4.9	0.0	21.9
21-Mar-22	61	46	77	63	56	72	0.00	0.12	4.6	0.0	18.9
22-Mar-22	69	58	79	66	60	74	0.00	0.13	10.8	1.3	30.2
23-Mar-22	70	61	74	69	66	72	0.77	0.07	9.0	0.3	28.0
24-Mar-22	60	54	66	64	60	68	0.00	0.08	4.6	0.1	15.3
25-Mar-22	60	49	69	63	57	70	0.00	0.12	7.0	0.1	27.1
26-Mar-22	60	46	72	63	56	71	0.00	0.12	8.7	0.6	32.9
27-Mar-22	62	48	77	65	56	75	0.00	0.13	5.1	0.1	21.7
28-Mar-22	67	52	83	69	61	78	0.00	0.14	5.1	0.0	23.4
29-Mar-22	70	60	83	73	66	83	0.00	0.15	4.5	0.0	18.7
30-Mar-22	71	60	83	73	66	81	0.00	0.15	11.1	0.6	37.6
31-Mar-22	71	62	79	73	68	79	1.31	0.13	7.8	0.2	38.4
High			85			83					50.0
Low		30			48					0.0	
Average	63	51	76	66	60	72			5.9		
Days over 95 ^o			0	Total for Month			11.24	3.26	Cumulative for Year		
Days below 32 ^o			1	# of Rain Days			10		Rain	17.6	
				Historic Average			5.30		Avg	15.4	
				Deviation from Avg			5.94		Dev	2.2	
				Net Gain/loss (Rain - ET)				7.98	Net	2.7	

March Marianna FAWN 6' Air Temps



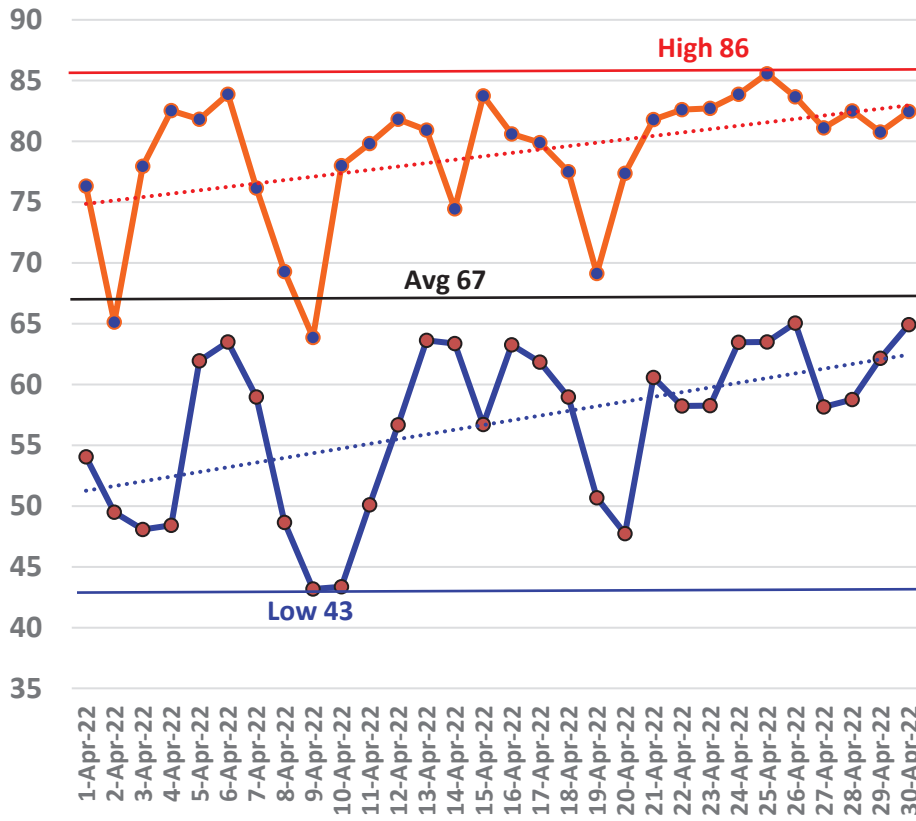
March Avg Soil Temps Marianna



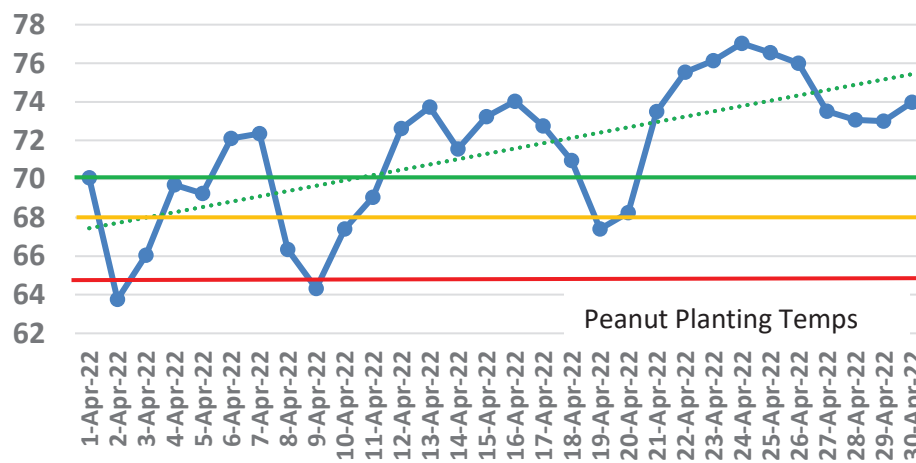
April Daily Weather Data

Temperature							Precipitation		Wind			
	Air Temp 6 ft			Soil Temp 4 inch			Rain	Evapo Trans	Avg Wind	Min Wind	Max Wind	
Date	Avg	Min	Max	Avg	Min	Max	Inches	Inches	mph	mph	mph	
1-Apr-22	65	54	76	70	64	78	0.00	0.14	4.3	0.0	14.7	
2-Apr-22	57	49	65	64	62	67	0.00	0.06	2.3	0.0	10.4	
3-Apr-22	62	48	78	66	58	76	0.00	0.14	3.4	0.0	17.4	
4-Apr-22	66	48	83	70	60	81	0.00	0.14	2.5	0.0	11.5	
5-Apr-22	67	62	82	69	67	75	1.26	0.09	7.8	0.1	40.1	
6-Apr-22	75	64	84	72	67	78	0.03	0.12	8.0	0.3	31.5	
7-Apr-22	70	59	76	72	66	77	0.01	0.16	9.6	0.4	24.8	
8-Apr-22	59	49	69	66	59	75	0.00	0.14	10.6	0.5	35.9	
9-Apr-22	54	43	64	64	58	72	0.00	0.13	8.8	0.3	37.3	
10-Apr-22	61	43	78	67	58	79	0.00	0.14	3.8	0.1	23.3	
11-Apr-22	65	50	80	69	62	78	0.00	0.13	5.7	0.0	22.7	
12-Apr-22	71	57	82	73	65	81	0.00	0.15	5.3	0.1	19.0	
13-Apr-22	71	64	81	74	69	79	0.00	0.13	6.4	0.2	20.1	
14-Apr-22	68	63	74	72	69	75	0.10	0.09	4.3	0.0	23.1	
15-Apr-22	70	57	84	73	64	84	0.00	0.17	3.4	0.0	15.0	
16-Apr-22	71	63	81	74	69	81	0.58	0.11	4.4	0.0	27.4	
17-Apr-22	68	62	80	73	68	80	0.62	0.11	3.3	0.0	38.4	
18-Apr-22	68	59	78	71	67	77	1.66	0.13	8.1	0.1	23.8	
19-Apr-22	59	51	69	67	60	76	0.00	0.15	5.4	0.0	22.5	
20-Apr-22	63	48	77	68	60	78	0.00	0.15	5.7	0.0	24.6	
21-Apr-22	70	61	82	73	66	84	0.00	0.17	4.5	0.0	19.0	
22-Apr-22	71	58	83	76	67	86	0.00	0.17	4.2	0.0	22.4	
23-Apr-22	72	58	83	76	68	85	0.00	0.16	6.3	0.1	19.6	
24-Apr-22	73	63	84	77	70	85	0.00	0.16	6.5	0.0	19.2	
25-Apr-22	72	64	86	77	71	85	0.84	0.14	4.8	0.0	21.2	
26-Apr-22	71	65	84	76	71	84	0.65	0.14	4.3	0.0	34.4	
27-Apr-22	69	58	81	74	67	82	0.00	0.18	4.6	0.1	15.1	
28-Apr-22	71	59	83	73	66	81	0.00	0.17	5.0	0.0	19.0	
29-Apr-22	71	62	81	73	68	80	0.00	0.13	6.9	0.1	20.4	
30-Apr-22	72	65	82	74	69	81	0.02	0.13	6.4	0.0	23.8	
High			86			86					40.1	
Low		43			58					0.0		
Average	67	57	79	71	65	79			5.5			
Days over 95 ^u				0			Total for Month		5.77	4.13	Cumulative for Year	
							# of Rain Days		10		Rain	23.4
Days below 32 ^u				0			Historic Average		4.38		Avg	19.7
							Deviation from Avg		1.39		Dev	3.6
Net Gain/loss (Rain - ET)								1.64	Net	2.7		

April Marianna FAWN 6' Air Temps



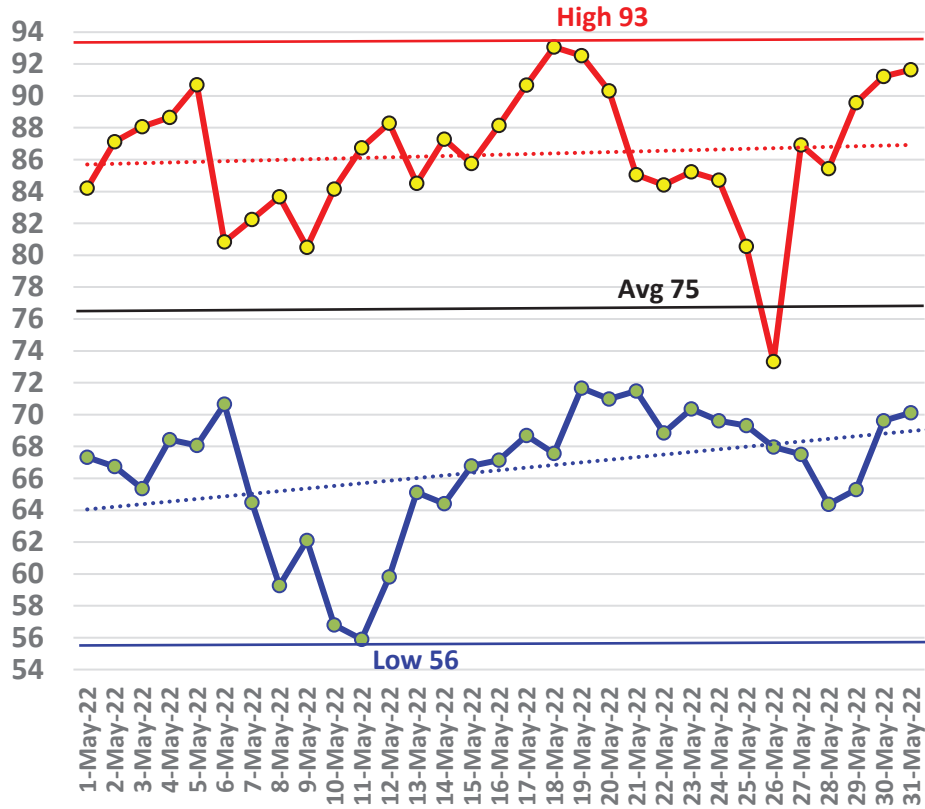
April Avg Soil Temps Marianna



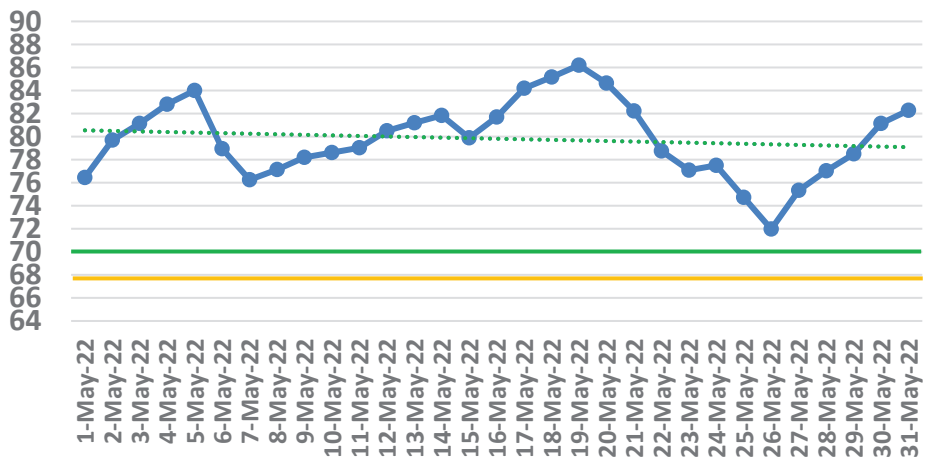
May Daily Weather Data

Date	Temperature						Precipitation		Wind					
	Air Temp 6 ft			Soil Temp 4 inch			Rain	Evapo Trans	Avg Wind	Min Wind	Max Wind			
	Avg	Min	Max	Avg	Min	Max	Inches	Inches	mph	mph	mph			
1-May-22	74	67	84	76	71	84	0.00	0.15	4.1	0.0	19.7			
2-May-22	76	67	87	80	73	90	0.00	0.18	3.7	0.0	15.8			
3-May-22	77	65	88	81	74	90	0.00	0.19	4.8	0.0	18.7			
4-May-22	77	68	89	83	76	92	0.00	0.19	3.7	0.0	17.4			
5-May-22	78	68	91	84	77	93	0.00	0.20	4.2	0.0	24.3			
6-May-22	74	71	81	79	75	83	0.47	0.09	6.5	0.1	29.4			
7-May-22	73	64	82	76	71	82	0.00	0.19	8.1	0.4	24.1			
8-May-22	71	59	84	77	69	86	0.00	0.19	3.7	0.0	18.3			
9-May-22	70	62	80	78	71	87	0.00	0.18	3.5	0.0	20.1			
10-May-22	71	57	84	79	71	87	0.00	0.18	3.0	0.0	17.0			
11-May-22	72	56	87	79	71	88	0.00	0.18	3.7	0.0	19.5			
12-May-22	75	60	88	81	73	89	0.00	0.18	3.5	0.0	19.2			
13-May-22	74	65	85	81	75	88	0.00	0.16	3.3	0.0	16.5			
14-May-22	75	64	87	82	76	90	0.00	0.17	2.9	0.0	13.3			
15-May-22	73	67	86	80	77	85	0.06	0.12	3.5	0.0	19.0			
16-May-22	78	67	88	82	75	90	0.00	0.20	4.1	0.0	18.3			
17-May-22	80	69	91	84	78	92	0.00	0.20	3.9	0.0	18.4			
18-May-22	80	68	93	85	79	93	0.00	0.19	4.2	0.0	19.2			
19-May-22	80	72	93	86	81	94	0.00	0.20	5.2	0.1	19.7			
20-May-22	79	71	90	85	80	91	0.02	0.17	6.5	0.3	31.1			
21-May-22	77	71	85	82	79	86	0.05	0.12	6.2	0.1	31.9			
22-May-22	73	69	84	79	76	83	0.55	0.12	4.6	0.0	38.3			
23-May-22	74	70	85	77	75	82	2.53	0.11	5.9	0.1	32.0			
24-May-22	75	70	85	78	74	83	0.47	0.12	3.2	0.0	27.0			
25-May-22	72	69	81	75	73	77	1.51	0.07	6.1	0.0	29.4			
26-May-22	70	68	73	72	71	73	1.11	0.05	7.4	0.1	20.2			
27-May-22	77	68	87	75	70	82	1.01	0.20	5.9	0.1	23.3			
28-May-22	76	64	85	77	71	84	0.00	0.20	3.1	0.1	15.3			
29-May-22	77	65	90	79	73	85	0.00	0.19	4.1	0.0	26.7			
30-May-22	79	70	91	81	75	89	0.06	0.21	3.8	0.0	20.5			
31-May-22	79	70	92	82	77	90	0	0.21	3.5	0.0	19.4			
High			93			94					38.3			
Low		56			69					0.0				
Average	75	67	86	80	74	87			4.5					
Days over 95 ^u 0 Days of 100 ^u 0 Days below 32 ^u 0				Total for Month			7.84	5.11	Cumulative for Year					
				# of Rain Days			11		Rain	31.2				
				Historic Average			3.48		Avg	23.2				
				Deviation from Avg			4.36		Dev	8.0				
				Net Gain/loss (Rain - ET)					2.73	Net	2.7			

May Marianna FAWN 6' Air Temps



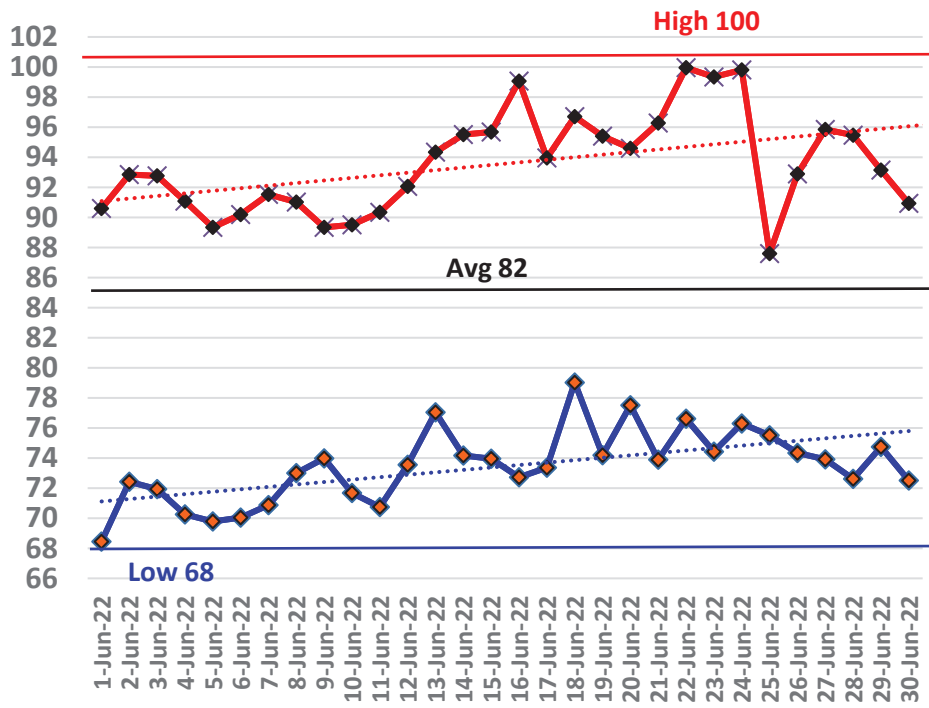
May Avg Soil Temps Marianna



June Daily Weather Data

Date	Temperature						Precipitation		Wind					
	Air Temp 6 ft			Soil Temp 4 inch			Rain	Evapo Trans	Avg Wind	Min Wind	Max Wind			
	Avg	Min	Max	Avg	Min	Max	Inches	Inches	mph	mph	mph			
1-Jun-22	80	68	91	84	78	91	0.00	0.21	3.0	0.0	15.6			
2-Jun-22	82	72	93	85	80	91	0.00	0.21	4.1	0.1	19.4			
3-Jun-22	80	72	93	86	81	92	0.00	0.20	3.7	0.0	20.0			
4-Jun-22	81	70	91	86	81	92	0.00	0.22	4.6	0.0	18.1			
5-Jun-22	77	70	89	84	80	90	0.36	0.15	3.3	0.0	38.0			
6-Jun-22	78	70	90	82	77	88	0.01	0.17	3.5	0.1	14.8			
7-Jun-22	81	71	92	83	78	90	0.00	0.21	3.2	0.0	13.3			
8-Jun-22	81	73	91	85	80	91	0.02	0.17	3.8	0.0	18.2			
9-Jun-22	78	74	89	83	80	88	0.75	0.13	4.9	0.1	36.9			
10-Jun-22	79	72	90	82	78	88	0.00	0.20	4.0	0.0	23.9			
11-Jun-22	80	71	90	83	78	90	0.00	0.21	3.8	0.0	16.7			
12-Jun-22	83	74	92	85	80	90	0.00	0.21	4.1	0.1	13.8			
13-Jun-22	85	77	94	87	83	92	0.00	0.21	4.8	0.1	17.3			
14-Jun-22	82	74	96	87	84	94	0.06	0.20	4.6	0.0	25.0			
15-Jun-22	84	74	96	87	82	93	0.00	0.22	3.0	0.1	10.9			
16-Jun-22	85	73	99	89	84	96	0.36	0.23	3.9	0.0	34.1			
17-Jun-22	84	73	94	87	82	93	0.00	0.22	3.9	0.0	26.1			
18-Jun-22	87	79	97	88	84	94	0.00	N/A	6.1	0.1	19.3			
19-Jun-22	85	74	95	89	83	96	0.00	0.24	4.3	0.0	21.3			
20-Jun-22	85	78	95	91	85	98	0.00	0.23	6.5	0.1	18.8			
21-Jun-22	85	74	96	91	86	98	0.00	0.22	2.9	0.0	14.6			
22-Jun-22	88	77	100	93	87	100	0.00	N/A	6.1	0.1	17.9			
23-Jun-22	88	74	99	93	87	100	0.00	N/A	5.5	0.6	29.1			
24-Jun-22	87	76	100	94	88	102	0.00	N/A	4.9	0.0	23.7			
25-Jun-22	78	76	88	91	86	94	0.06	0.11	4.4	0.0	23.5			
26-Jun-22	83	74	93	89	83	97	0.00	0.22	4.0	0.0	17.3			
27-Jun-22	84	74	96	92	85	100	0.00	0.23	3.0	0.0	16.9			
28-Jun-22	81	73	95	92	87	98	0.00	0.18	3.7	0.0	25.2			
29-Jun-22	81	75	93	91	86	97	0.00	0.18	3.8	0.0	23.2			
30-Jun-22	79	73	91	91	86	98	0	0.16	3.1	0.0	29.0			
High			100			102					38.0			
Low		68			77					0.0				
Average	82	73	94	88	83	94			4.1					
Days over 95 ^u 11 Days of 100 ^u 2 Days below 32 ^u 0				Total for Month			1.62	5.14	Cumulative for Year					
				# of Rain Days						7	Rain 32.9			
				Historic Average						5.00	Avg 28.2			
				Deviation from Avg						-3.38	Dev 4.6			
				Net Gain/loss (Rain - ET)						-3.52	Net 2.7			

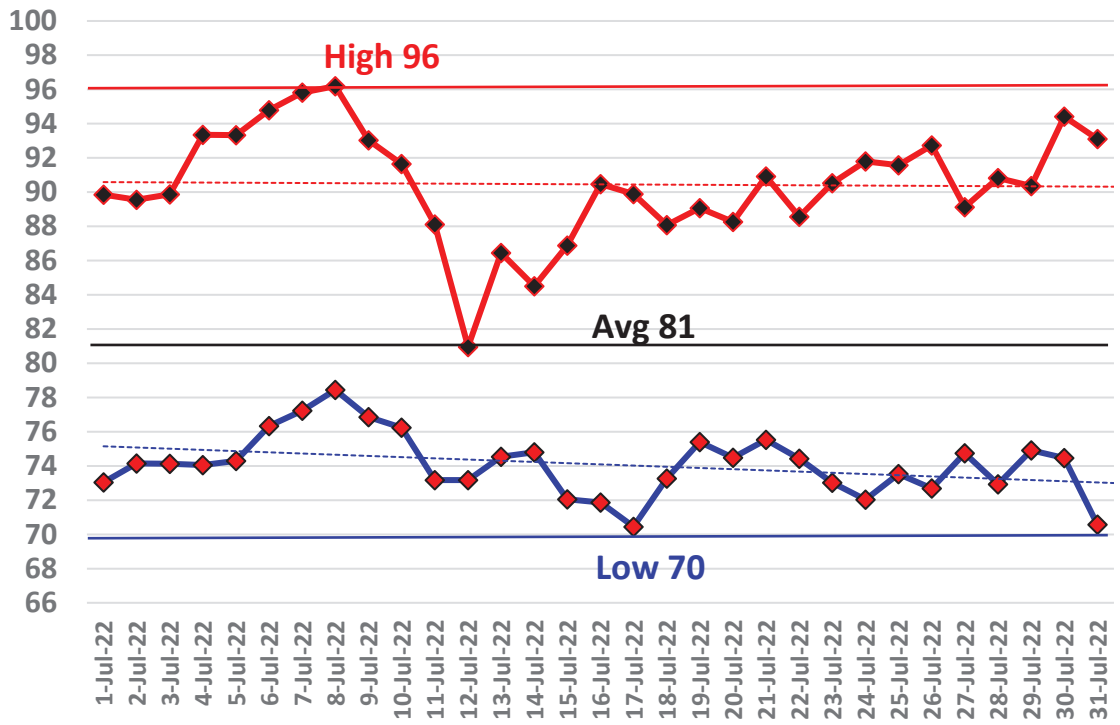
June Marianna FAWN 6' Air Temps



July Daily Weather Data

Date	Temperature						Precipitation		Wind		
	Air Temp 6 ft			Soil Temp 4 inch			Rain	Evapo Trans	Avg Wind	Min Wind	Max Wind
	Avg	Min	Max	Avg	Min	Max	Inches	Inches	mph	mph	mph
1-Jul-22	82	73	90	91	86	97	0.00	0.18	3.9	0.0	17.7
2-Jul-22	80	74	90	90	87	96	0.06	0.14	3.6	0.0	28.8
3-Jul-22	79	74	90	87	84	93	0.02	0.15	4.0	0.0	22.7
4-Jul-22	80	74	93	87	83	98	0.63	0.18	3.1	0.0	24.6
5-Jul-22	83	74	93	88	81	95	0.00	0.22	2.9	0.0	17.7
6-Jul-22	85	76	95	89	83	98	0.00	0.24	3.8	0.0	16.9
7-Jul-22	86	77	96	92	85	100	0.00	0.23	4.6	0.1	15.6
8-Jul-22	86	78	96	94	87	102	0.00	N/A	4.6	0.1	22.8
9-Jul-22	82	77	93	91	87	97	0.18	0.16	4.1	0.0	20.9
10-Jul-22	83	76	92	88	83	94	0.01	0.19	4.6	0.0	15.1
11-Jul-22	79	73	88	86	82	92	1.13	0.12	4.0	0.0	31.7
12-Jul-22	76	73	81	82	80	85	0.14	0.08	3.7	0.0	17.8
13-Jul-22	79	75	86	83	79	88	0.28	0.13	3.2	0.0	12.6
14-Jul-22	77	75	85	82	80	84	0.13	0.10	3.3	0.0	25.7
15-Jul-22	79	72	87	83	78	89	0.19	0.16	3.8	0.0	16.8
16-Jul-22	80	72	90	84	78	93	0.00	0.20	3.5	0.0	20.5
17-Jul-22	80	70	90	85	78	92	0.00	0.20	3.3	0.0	16.2
18-Jul-22	80	73	88	85	81	89	0.36	0.15	3.3	0.0	16.9
19-Jul-22	80	75	89	84	81	89	0.08	0.15	4.1	0.1	25.0
20-Jul-22	79	74	88	82	80	86	1.14	0.12	5.1	0.0	31.5
21-Jul-22	83	76	91	84	78	91	0.00	0.21	5.3	0.2	21.4
22-Jul-22	80	74	89	83	81	86	0.68	0.14	3.8	0.0	29.2
23-Jul-22	81	73	91	84	79	92	0.00	0.21	3.9	0.0	17.9
24-Jul-22	80	72	92	85	79	94	0.00	0.19	3.0	0.0	22.5
25-Jul-22	80	74	92	86	80	94	0.00	0.18	3.2	0.0	25.0
26-Jul-22	82	73	93	87	81	96	0.00	0.21	2.9	0.0	21.1
27-Jul-22	81	75	89	88	83	93	0.00	0.17	3.6	0.1	19.4
28-Jul-22	79	73	91	86	83	93	0.73	0.14	2.8	0.0	22.7
29-Jul-22	81	75	90	85	81	91	0.04	0.17	4.2	0.1	24.5
30-Jul-22	84	74	94	87	81	94	0.00	0.22	3.4	0.0	13.6
31-Jul-22	81	71	93	87	80	95	0.00	0.19	2.9	0.0	20.8
High			96			102					31.7
Low		70			78					0.0	
Average	81	74	90	86	82	93			3.7		
Days over 95 ^o	2			Total for Month			5.80	5.13	Cumulative for Year		
Days of 100 ^o	0			# of Rain Days			16		Rain	38.7	
Days below 32 ^o	0			Historic Average			6.14		Avg	34.4	
			Deviation from Avg			-0.34			Dev	4.3	
			Net Gain/loss (Rain - ET)				0.67		Net	2.7	

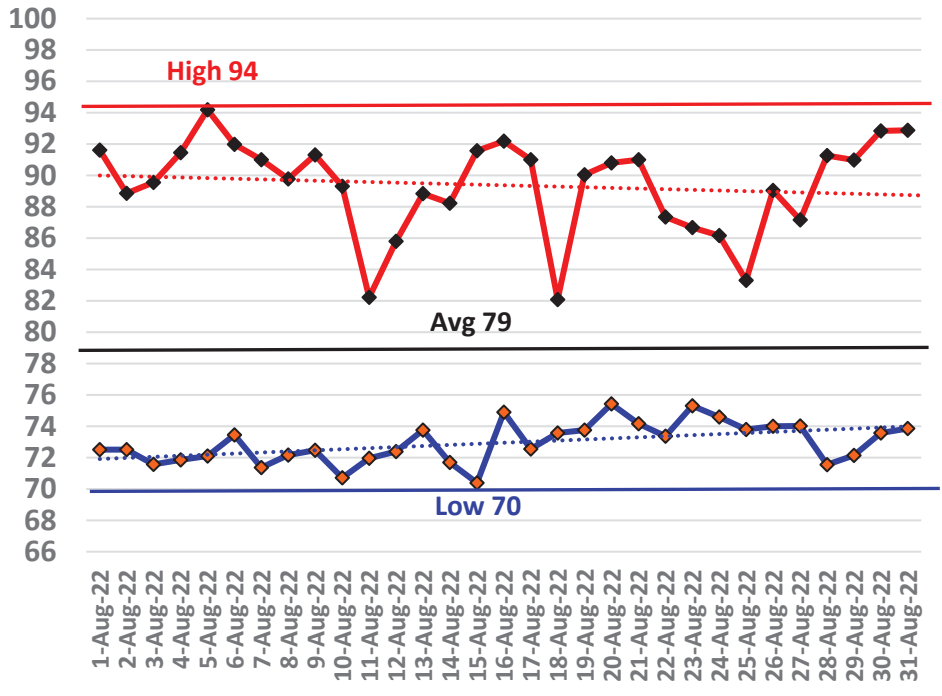
July Marianna FAWN 6' Air Temps



August Daily Weather Data

Date	Temperature						Precipitation		Wind					
	Air Temp 6 ft			Soil Temp 4 inch			Rain	Evapo Trans	Avg Wind	Min Wind	Max Wind			
	Avg	Min	Max	Avg	Min	Max	Inches	Inches	mph	mph	mph			
1-Aug-22	82	73	92	88	82	96	0.00	0.20	3.8	0.0	18.8			
2-Aug-22	78	73	89	86	83	91	0.48	0.14	3.6	0.0	32.1			
3-Aug-22	80	72	90	86	79	94	0.00	0.19	2.7	0.0	11.0			
4-Aug-22	80	72	91	86	80	94	0.00	0.17	2.9	0.0	25.0			
5-Aug-22	82	72	94	87	80	97	0.00	0.21	2.9	0.0	26.2			
6-Aug-22	78	73	92	86	82	94	0.21	0.13	2.9	0.0	25.3			
7-Aug-22	77	71	91	84	79	94	0.47	0.16	2.6	0.0	31.1			
8-Aug-22	78	72	90	84	79	93	0.01	0.16	2.7	0.0	20.5			
9-Aug-22	77	72	91	84	80	93	0.98	0.14	3.0	0.0	22.5			
10-Aug-22	77	71	89	82	78	89	0.04	0.14	3.5	0.0	17.2			
11-Aug-22	77	72	82	81	78	86	0.14	0.13	4.6	0.0	26.7			
12-Aug-22	77	72	86	82	78	88	0.05	0.13	4.6	0.0	20.0			
13-Aug-22	79	74	89	83	79	89	1.34	0.14	3.9	0.0	30.0			
14-Aug-22	79	72	88	83	78	90	0.06	0.16	2.6	0.0	22.0			
15-Aug-22	81	70	92	85	78	93	0.02	0.19	2.7	0.0	11.5			
16-Aug-22	81	75	92	85	82	91	0.00	0.15	5.1	0.0	19.3			
17-Aug-22	81	73	91	85	80	91	0.17	0.17	2.9	0.0	20.7			
18-Aug-22	77	74	82	83	81	85	0.49	0.10	3.2	0.0	15.9			
19-Aug-22	81	74	90	84	79	91	0.00	0.17	2.9	0.0	13.1			
20-Aug-22	80	75	91	86	81	93	0.00	0.17	2.9	0.0	18.6			
21-Aug-22	80	74	91	86	81	94	0.00	0.16	2.7	0.0	21.1			
22-Aug-22	80	73	87	86	81	91	0.00	0.15	4.2	0.0	16.0			
23-Aug-22	80	75	87	86	82	90	0.00	0.13	2.5	0.0	10.1			
24-Aug-22	79	75	86	85	82	89	0.00	0.11	2.6	0.0	11.3			
25-Aug-22	77	74	83	83	81	86	0.08	0.08	2.2	0.0	8.5			
26-Aug-22	79	74	89	84	80	91	0.00	0.14	2.5	0.0	19.8			
27-Aug-22	78	74	87	84	81	90	0.24	0.12	2.6	0.0	16.1			
28-Aug-22	79	72	91	85	79	93	0.00	0.18	2.8	0.0	20.7			
29-Aug-22	81	72	91	86	81	93	0.00	0.16	2.3	0.0	10.7			
30-Aug-22	82	74	93	88	82	96	0.00	0.18	2.5	0.0	13.6			
31-Aug-22	81	74	93	88	83	95	0.00	0.18	3.8	0.0	21.5			
High			94			97					32.1			
Low		70			78					0.0				
Average	79	73	89	85	80	92			3.1					
Days over 95 ^u 0 Days of 100 ^u 0 Days below 32 ^u 0				Total for Month			4.78	4.74	Cumulative for Year					
				# of Rain Days						15		Rain	43.4	
				Historic Average						5.36		Avg	39.7	
				Deviation from Avg						-0.58		Dev	3.7	
				Net Gain/loss (Rain - ET)						0.04		Net	2.7	

August Marianna FAWN 6' Air Temps

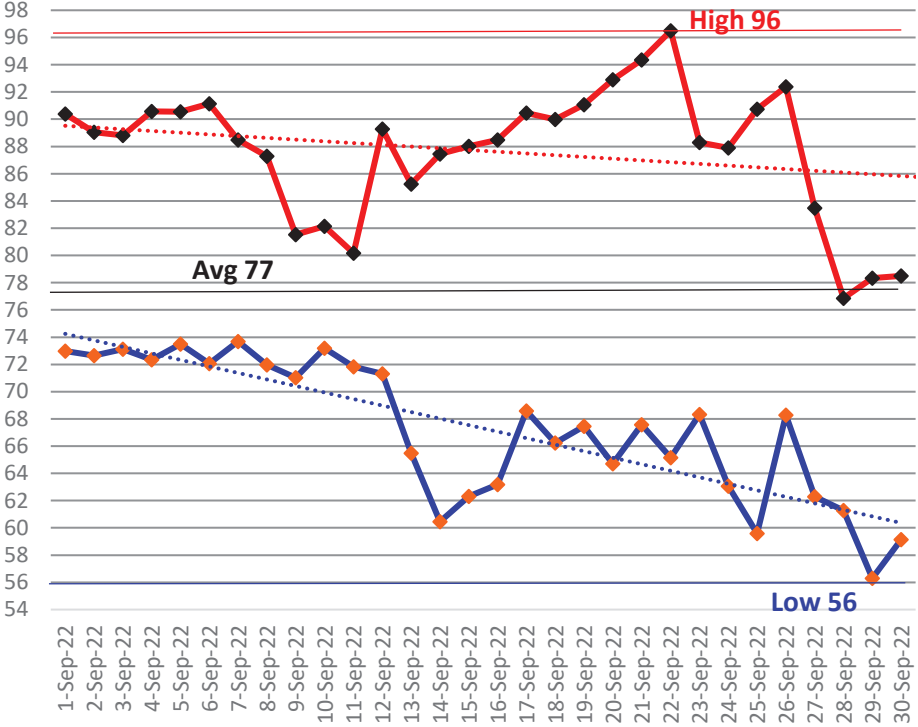


Summer Rain Days - 38 of 92 days

September Daily Weather Data

Date	Temperature						Precipitation		Wind		
	Air Temp 6 ft			Soil Temp 4 inch			Rain	Evapo Trans	Avg Wind	Min Wind	Max Wind
	Avg	Min	Max	Avg	Min	Max	Inches	Inches	mph	mph	mph
1-Sep-22	80	73	90	89	84	96	0.02	0.16	4.1	0.0	20.1
2-Sep-22	79	73	89	87	83	93	0.00	0.15	4.5	0.0	21.4
3-Sep-22	78	73	89	86	83	92	0.00	0.12	2.9	0.0	17.2
4-Sep-22	79	72	91	86	82	95	0.26	0.16	3.2	0.0	23.8
5-Sep-22	80	73	91	85	81	90	0.01	0.15	3.0	0.0	13.3
6-Sep-22	81	72	91	85	80	90	0.00	0.16	3.3	0.0	17.7
7-Sep-22	79	74	88	84	81	88	0.00	0.11	2.9	0.0	13.9
8-Sep-22	77	72	87	84	81	89	0.00	0.13	3.3	0.0	16.1
9-Sep-22	76	71	82	82	81	84	0.03	0.08	2.5	0.0	16.6
10-Sep-22	76	73	82	81	80	82	0.00	0.07	4.3	0.0	19.8
11-Sep-22	75	72	80	80	79	82	0.18	0.07	3.5	0.1	18.8
12-Sep-22	78	71	89	82	77	87	0.00	0.15	2.9	0.0	16.3
13-Sep-22	76	65	85	83	78	89	0.00	0.16	3.6	0.0	16.6
14-Sep-22	73	60	87	82	76	89	0.00	0.15	2.5	0.0	14.2
15-Sep-22	74	62	88	83	77	90	0.00	0.15	2.1	0.0	15.0
16-Sep-22	76	63	88	84	78	91	0.00	0.15	3.1	0.0	17.4
17-Sep-22	78	69	90	85	80	92	0.00	0.16	2.2	0.0	14.9
18-Sep-22	78	66	90	85	80	91	0.00	0.16	4.3	0.0	21.1
19-Sep-22	78	67	91	86	81	91	0.00	0.15	3.7	0.0	20.9
20-Sep-22	79	65	93	86	80	93	0.00	0.16	2.9	0.0	15.8
21-Sep-22	80	68	94	87	82	93	0.00	0.15	2.7	0.0	14.1
22-Sep-22	81	65	96	87	81	94	0.00	0.16	3.6	0.0	15.6
23-Sep-22	78	68	88	88	83	94	0.00	0.15	4.4	0.0	14.6
24-Sep-22	74	63	88	86	81	93	0.00	0.14	2.7	0.0	15.3
25-Sep-22	75	60	91	86	80	93	0.00	0.14	2.4	0.0	13.4
26-Sep-22	79	68	92	87	82	93	0.00	0.15	3.9	0.1	15.1
27-Sep-22	73	62	83	84	80	89	0.00	0.13	7.0	0.0	20.5
28-Sep-22	68	61	77	80	77	84	0.00	0.11	10.7	0.1	29.9
29-Sep-22	66	56	78	79	74	84	0.00	0.12	9.7	0.1	29.6
30-Sep-22	68	59	78	79	75	84	0.00	0.11	5.6	0.0	20.2
High			96			96					29.9
Low		56			74					0.0	
Average	77	67	88	84	80	90			3.9		
Days over 95 ^u Days of 100 ^u Days below 32 ^u Days of 90+				Total for Month			0.50	4.11	Cumulative for Year		
				# of Rain Days			5.00		Rain	43.9	
				Historic Average			4.45		Avg	44.2	
				Deviation from Avg			-3.95		Dev	-0.3	
				Net Gain/loss (Rain - ET)				-3.61	Net	2.7	

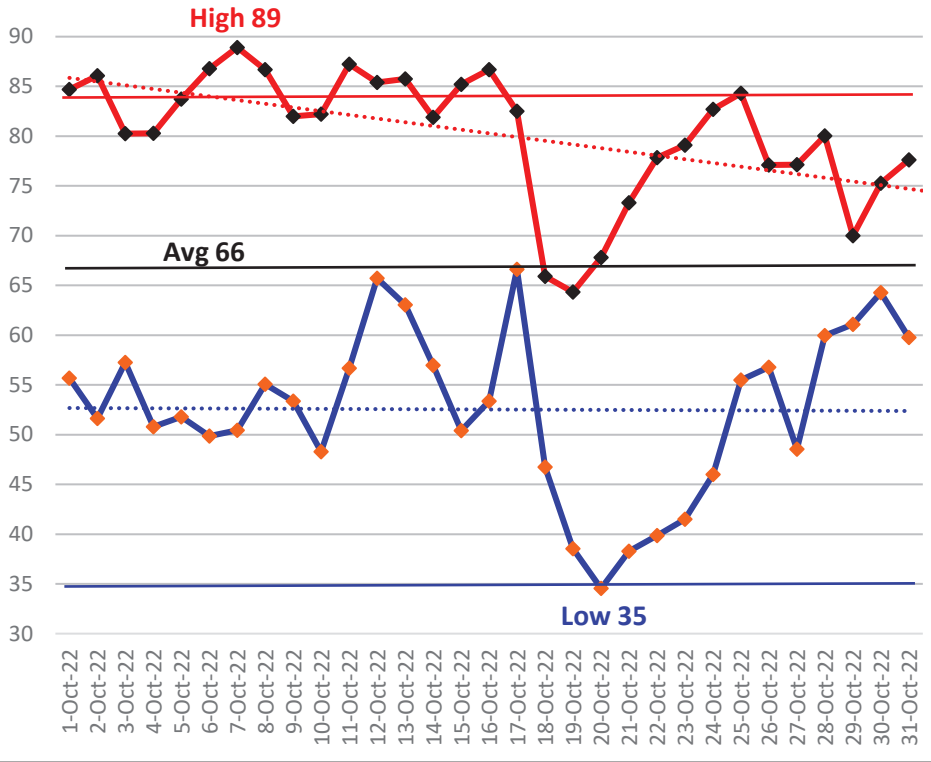
September Marianna FAWN 6' Air Temps



October Daily Weather Data

Date	Temperature						Precipitation		Wind			
	Air Temp 6 ft			Soil Temp 4 inch			Rain	Evapo Trans	Avg Wind	Min Wind	Max Wind	
	Avg	Min	Max	Avg	Min	Max	Inches	Inches	mph	mph	mph	
1-Oct-22	70	56	85	80	74	86	0.00	0.13	4.8	0.1	20.8	
2-Oct-22	70	52	86	79	74	85	0.00	0.12	5.8	0.1	27.3	
3-Oct-22	69	57	80	80	75	86	0.00	0.11	3.8	0.0	18.0	
4-Oct-22	66	51	80	79	74	85	0.00	0.10	2.5	0.0	18.0	
5-Oct-22	67	52	84	79	73	86	0.00	0.11	2.7	0.0	18.3	
6-Oct-22	68	50	87	79	73	86	0.00	0.11	2.4	0.0	13.3	
7-Oct-22	69	50	89	79	73	86	0.00	0.11	2.2	0.0	14.8	
8-Oct-22	71	55	87	79	74	84	0.00	0.11	5.0	0.0	19.4	
9-Oct-22	66	53	82	78	73	83	0.00	0.11	5.2	0.0	17.9	
10-Oct-22	66	48	82	77	71	83	0.00	0.10	4.0	0.0	13.4	
11-Oct-22	70	57	87	78	73	84	0.00	0.11	2.7	0.0	13.4	
12-Oct-22	72	66	85	78	74	81	1.42	0.08	4.0	0.0	25.0	
13-Oct-22	73	63	86	77	73	82	0.02	0.11	3.6	0.0	15.6	
14-Oct-22	68	57	82	74	69	78	0.00	0.11	3.2	0.0	13.9	
15-Oct-22	67	50	85	72	67	78	0.00	0.10	2.0	0.0	11.9	
16-Oct-22	71	53	87	73	67	79	0.00	0.10	2.1	0.0	10.0	
17-Oct-22	73	67	83	75	73	78	0.00	0.09	4.9	0.0	17.1	
18-Oct-22	57	47	66	70	66	74	0.00	0.08	8.8	0.2	25.6	
19-Oct-22	50	39	64	66	61	70	0.00	0.07	5.7	0.1	18.5	
20-Oct-22	51	35	68	65	60	71	0.00	0.07	2.6	0.0	14.5	
21-Oct-22	55	38	73	66	61	71	0.00	0.07	1.9	0.0	12.6	
22-Oct-22	58	40	78	66	61	72	0.00	0.08	2.2	0.0	15.1	
23-Oct-22	59	41	79	67	62	73	0.00	0.08	1.9	0.0	11.7	
24-Oct-22	64	46	83	68	63	73	0.00	0.09	2.8	0.0	15.6	
25-Oct-22	70	55	84	70	66	74	0.00	0.09	6.4	0.0	21.2	
26-Oct-22	67	57	77	71	67	74	0.54	0.09	6.2	0.3	24.8	
27-Oct-22	62	49	77	67	62	73	0.00	0.08	2.6	0.0	11.9	
28-Oct-22	69	60	80	69	65	74	0.00	0.09	3.2	0.0	19.1	
29-Oct-22	66	61	70	69	67	70	0.00	0.05	4.3	0.0	18.3	
30-Oct-22	69	64	75	69	68	71	0.00	0.06	7.3	0.2	19.6	
31-Oct-22	69	60	78	71	69	74	0.15	0.07	3.5	0.1	13.1	
High			89			86					27.3	
Low		35			60					0.0		
Average	66	53	80	73	69	78			3.9			
Days over 95 ^u	0			Total for Month			2.13	2.88	Cumulative for Year			
				# of Rain Days			4.00		Rain	46.1		
				Historic Average			2.81		Avg	47.0		
				Deviation from Avg			-0.68		Dev	-0.9		
Days below 32 ^u	0			Net Gain/loss (Rain - ET)			-0.75	Net	2.7			

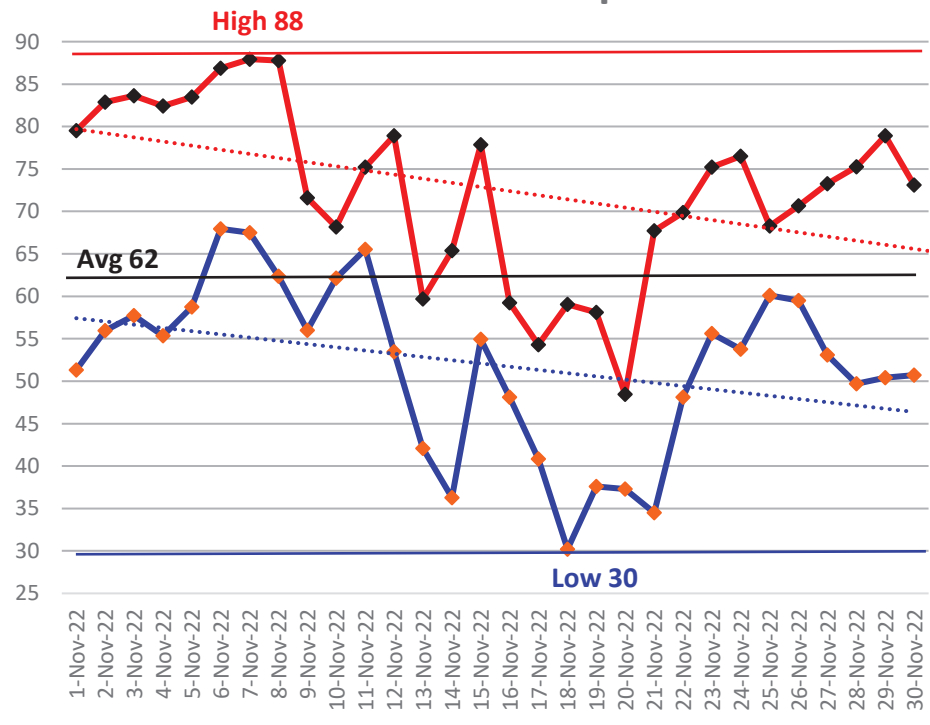
October Marianna FAWN 6' Air Temps



November Daily Weather Data

Date	Temperature						Precipitation		Wind		
	Air Temp 6 ft			Soil Temp 4 inch			Rain	Evapo Trans	Avg Wind	Min Wind	Max Wind
	Avg	Min	Max	Avg	Min	Max	Inches	Inches	mph	mph	mph
1-Nov-22	65	51	80	68	64	73	0.00	0.08	2.8	0.0	18.3
2-Nov-22	69	56	83	70	65	75	0.00	0.09	2.3	0.0	12.1
3-Nov-22	69	58	84	70	66	75	0.00	0.09	2.5	0.0	15.1
4-Nov-22	68	55	82	70	66	74	0.00	0.09	2.7	0.0	14.9
5-Nov-22	71	59	83	71	67	75	0.00	0.08	3.9	0.0	18.1
6-Nov-22	76	68	87	73	70	77	0.00	0.09	3.6	0.0	16.6
7-Nov-22	76	68	88	74	72	78	0.00	0.10	2.5	0.0	16.0
8-Nov-22	74	62	88	74	71	77	0.00	N/A	3.0	0.1	20.5
9-Nov-22	64	56	72	70	67	73	0.00	0.07	4.8	0.1	23.6
10-Nov-22	65	62	68	68	67	69	1.16	0.05	12.1	0.4	35.1
11-Nov-22	69	66	75	69	67	70	0.05	0.06	6.8	0.2	25.6
12-Nov-22	68	53	79	69	67	73	0.00	0.07	6.2	0.1	20.9
13-Nov-22	50	42	60	63	59	67	0.00	0.05	8.6	0.5	22.0
14-Nov-22	52	36	65	60	55	64	0.00	0.05	3.0	0.0	12.7
15-Nov-22	64	55	78	64	60	68	0.11	0.07	8.5	0.0	29.2
16-Nov-22	54	48	59	62	59	65	0.00	0.05	8.3	0.3	21.1
17-Nov-22	48	41	54	58	55	59	0.00	0.05	5.9	0.4	15.6
18-Nov-22	44	30	59	55	51	59	0.00	0.04	4.3	0.1	17.1
19-Nov-22	50	38	58	56	53	58	0.05	0.05	2.7	0.0	15.3
20-Nov-22	45	37	48	54	51	56	0.04	0.04	5.8	0.1	18.0
21-Nov-22	50	35	68	54	49	59	0.00	0.05	2.8	0.1	12.5
22-Nov-22	59	48	70	58	54	62	0.00	0.06	3.2	0.0	11.9
23-Nov-22	63	56	75	61	58	66	0.00	0.06	2.9	0.0	14.2
24-Nov-22	65	54	77	63	60	67	0.00	0.06	2.8	0.0	14.5
25-Nov-22	64	60	68	65	64	67	0.07	0.05	3.7	0.0	16.4
26-Nov-22	64	59	71	65	63	66	0.01	0.05	6.3	0.1	22.4
27-Nov-22	66	53	73	66	62	69	0.20	0.06	8.7	0.4	26.9
28-Nov-22	62	50	75	63	60	67	0.00	0.06	4.3	0.0	19.3
29-Nov-22	65	50	79	64	60	68	0.00	0.07	5.8	0.0	22.9
30-Nov-22	66	51	73	65	61	67	1.14	0.06	7.8	0.1	31.5
High			88			78					35.1
Low		30			49					0.0	
Average	62	52	73	65	61	68			5.0		
Days over 95 ^o				0		Total for Month		2.83	1.85	Cumulative for Year	
Days below 32 ^o				1		# of Rain Days		9.00		Rain	48.9
						Historic Average		3.32		Avg	50.3
						Deviation from Avg		-0.49		Dev	-1.4
						Net Gain/loss (Rain - ET)		0.98		Net	2.7

November Marianna FAWN 6' Air Temps

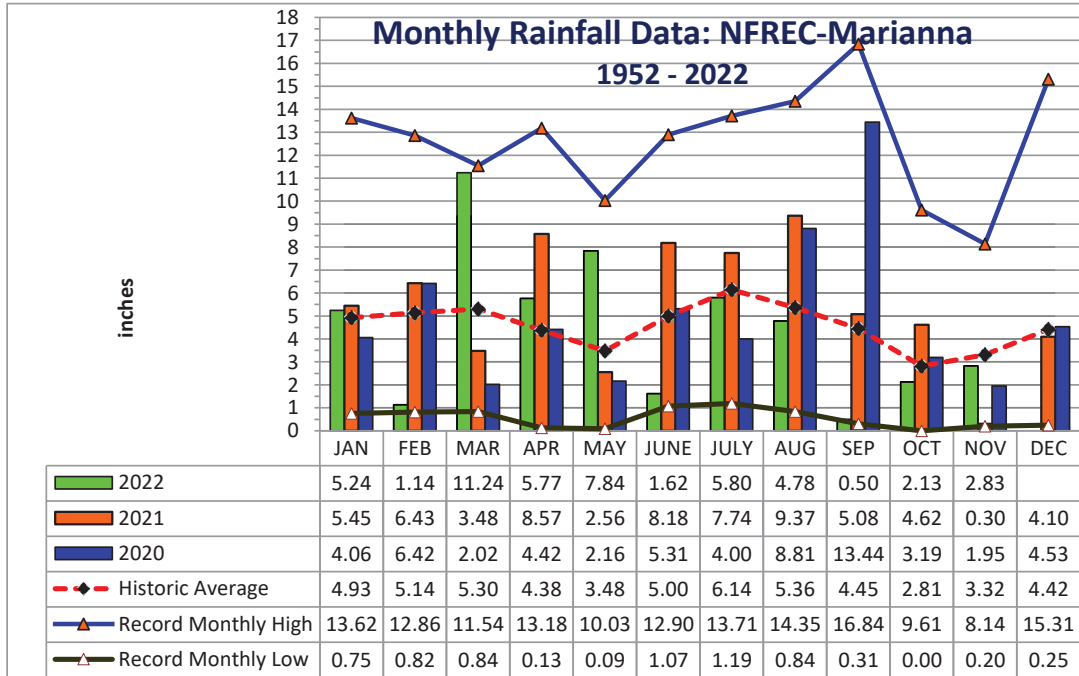




YEAR	JAN	FEB	MAR	APR	MAY	JUNE	JULY	AUG	SEP	OCT	NOV	DEC	TOTAL
1952	1.14	8.88	4.48	2.11	5.13	1.12	5.95	8.81	3.09	0.65	3.26	3.42	48.04
1953	4.84	7.26	3.03	8.43	2.43	3.97	6.84	1.63	6.33	0.65	4.09	15.31	64.81
1954	1.33	3.49	2.62	2.58	1.96	3.46	3.28	2.84	1.72	1.30	2.66	1.44	28.68
1955	3.66	1.83	0.84	5.80	3.03	1.62	6.75	3.75	2.44	2.10	0.72	0.77	33.31
1956	3.59	5.18	3.77	2.04	4.03	5.45	8.52	4.09	6.44	5.08	0.28	3.34	51.81
1957	0.75	2.65	5.17	5.74	4.60	5.75	9.83	5.91	16.84	1.31	6.24	2.22	67.01
1958	4.48	3.61	4.73	7.22	5.57	6.00	8.39	3.45	3.68	1.88	1.75	2.32	53.08
1959	3.67	7.06	8.50	5.73	6.95	3.77	4.83	3.67	3.07	7.93	0.21	1.53	56.92
1960	3.36	7.08	3.41	6.80	3.20	4.75	4.97	4.80	6.22	2.00	0.47	2.35	49.41
1961	4.23	4.15	3.64	5.57	3.97	4.41	3.99	11.09	2.60	0.00	2.84	6.23	52.72
1962	1.72	2.80	8.13	3.28	2.86	3.67	7.97	6.07	3.07	2.82	5.16	1.67	49.22
1963	7.31	3.02	3.18	1.36	3.50	7.99	5.16	1.50	5.25	0.01	4.22	6.05	48.55
1964	10.80	6.81	6.41	9.47	2.23	5.68	9.22	3.07	7.47	9.61	3.35	6.44	80.56
1965	2.63	6.09	5.51	3.96	0.18	9.60	3.26	4.18	4.48	3.41	1.81	3.60	48.71
1966	5.56	9.84	2.57	0.77	5.80	3.13	3.25	9.82	5.09	1.41	2.03	4.62	53.89
1967	8.27	3.32	2.19	0.13	2.61	7.02	6.49	3.58	1.40	1.86	2.40	7.98	47.25
1968	1.28	2.30	3.40	2.50	3.39	1.18	5.45	4.61	2.99	1.41	5.11	5.34	38.96
1969	1.68	3.49	7.08	4.54	3.01	1.71	13.18	3.05	5.64	1.50	1.22	3.80	49.90
1970	4.16	9.20	8.86	1.83	1.81	3.69	5.04	8.01	0.49	4.40	2.21	3.13	52.83
1971	1.97	6.11	7.15	3.17	3.03	3.85	5.20	6.76	2.47	1.84	1.94	3.70	47.19
1972	3.62	6.03	6.41	0.38	2.87	8.89	3.78	5.39	2.14	2.44	3.29	3.77	49.01
1973	8.14	7.71	8.38	7.60	6.87	3.63	11.12	4.51	5.40	0.27	3.64	5.33	72.60
1974	5.24	5.80	2.66	3.40	3.78	1.56	3.29	8.01	4.68	0.84	2.14	2.89	44.29
1975	10.21	6.36	4.91	10.35	3.97	4.10	13.71	5.40	3.81	4.35	2.89	3.28	73.34
1976	6.99	1.50	4.89	1.87	8.89	3.08	3.03	3.47	5.47	6.18	5.72	3.97	55.06
1977	3.47	1.81	6.52	0.88	0.60	6.36	3.55	5.22	9.83	2.59	8.14	4.19	53.16
1978	7.28	3.28	7.25	4.65	6.73	3.79	7.25	4.90	0.98	0.20	6.01	3.65	55.97
1979	7.30	7.78	3.26	7.75	6.22	1.31	7.49	6.30	11.51	0.53	4.47	2.84	66.76
1980	6.58	2.96	11.54	9.29	4.50	3.50	5.87	2.53	4.56	4.71	1.52	0.25	57.81
1981	1.70	5.32	5.94	3.03	2.73	4.74	4.02	2.53	2.44	1.75	0.85	4.94	39.99
1982	4.17	5.61	2.91	5.93	5.39	3.00	7.51	4.42	6.00	2.65	2.34	9.14	59.07
1983	4.92	6.84	8.53	7.88	2.27	5.66	1.19	2.53	8.97	3.52	5.90	7.65	65.86
1984	5.49	5.01	8.62	6.29	2.50	5.31	12.01	5.76	0.32	1.60	1.63	0.80	55.34
1985	4.60	4.46	2.60	1.18	4.44	5.68	3.68	5.58	1.42	7.42	7.91	5.34	54.31
1986	5.68	10.27	3.21	0.83	2.26	1.85	2.75	4.12	2.35	2.22	4.40	5.68	45.62
1987	8.62	5.52	7.23	0.40	4.46	5.43	5.51	4.18	2.27	0.06	4.02	0.81	48.51
1988	5.57	6.40	8.41	2.69	0.28	1.07	5.43	3.98	5.53	1.98	3.28	1.23	45.85
1989	1.59	2.74	4.96	3.63	7.01	12.90	11.19	3.06	3.36	7.20	4.71	5.45	67.80
1990	5.26	4.57	4.55	3.00	3.22	4.02	3.65	2.91	0.85	1.34	0.93	3.42	37.72
1991	13.62	3.44	9.00	5.32	10.03	5.30	10.67	3.89	1.53	1.17	1.60	3.00	68.57
1992	8.37	6.29	7.92	2.50	1.41	11.16	8.69	6.72	3.19	2.08	7.40	2.93	68.66
1993	12.00	3.38	7.41	1.50	1.60	4.18	6.68	3.89	3.44	2.90	2.27	3.63	52.88
1994	8.64	2.53	6.25	4.34	1.82	11.41	10.95	9.08	6.44	7.62	2.53	3.79	75.40
1995	5.23	3.13	4.29	4.35	3.90	5.56	3.02	6.16	0.86	7.51	4.12	1.78	49.91
1996	3.64	5.99	8.47	5.76	1.50	5.43	2.83	14.28	5.32	3.81	2.01	3.65	62.69
1997	6.68	5.29	2.63	10.08	5.91	6.41	5.73	4.65	3.78	2.10	6.85	8.44	68.55
1998	6.28	8.30	6.11	2.24	1.45	2.35	4.37	2.20	16.31	0.30	2.05	1.98	53.94
1999	6.95	2.90	3.61	1.50	6.71	8.99	8.64	4.02	4.33	3.13	3.56	2.50	56.84

YEAR	JAN	FEB	MAR	APR	MAY	JUNE	JULY	AUG	SEP	OCT	NOV	DEC	TOTAL
2000	3.78	4.96	4.48	4.05	0.09	4.00	3.40	7.15	7.20	0.71	4.43	3.21	47.46
2001	2.16	0.82	10.00	1.99	2.52	8.24	4.66	8.21	1.90	1.51	1.70	0.78	44.49
2002	3.82	2.44	5.51	5.78	2.19	3.45	10.34	3.30	11.83	7.36	7.76	5.99	69.77
2003	2.30	7.03	8.18	4.89	3.11	6.11	7.84	5.99	2.39	3.58	3.04	3.12	57.58
2004	3.19	7.66	0.90	4.37	1.19	6.66	4.92	1.67	10.01	3.89	4.97	3.25	52.68
2005	3.33	2.31	9.05	7.04	1.67	7.47	9.44	11.71	1.62	0.03	3.15	4.81	61.63
2006	4.82	3.90	0.91	1.61	4.97	1.99	2.22	5.18	0.91	3.09	3.41	5.43	38.44
2007	5.99	2.45	1.10	0.99	1.57	3.97	3.94	4.18	1.27	4.79	1.89	4.03	36.17
2008	4.26	9.00	9.11	4.28	1.46	8.64	4.02	9.29	0.74	5.11	3.18	8.23	67.32
2009	2.33	3.26	7.11	7.73	9.17	2.78	3.88	3.19	5.22	3.39	2.35	9.57	59.98
2010	7.53	3.99	3.41	4.01	5.09	2.92	2.31	0.84	1.33	0.22	5.82	0.63	38.10
2011	4.33	4.04	5.00	0.92	0.78	1.66	5.11	1.87	2.26	1.84	1.94	3.75	33.50
2012	3.79	7.49	5.94	3.17	1.42	7.35	5.05	14.35	5.17	1.75	1.30	4.10	60.88
2013	1.05	12.86	2.99	3.54	0.64	3.72	13.39	13.17	2.14	1.96	3.91	4.44	63.81
2014	2.15	4.99	7.70	13.18	4.03	2.32	5.69	2.55	6.03	2.03	5.93	5.32	61.92
2015	3.4	3.8	2.17	9.52	3.55	4.04	4.85	2.75	4.15	1.00	7.33	8.67	55.23
2016	4.8	3.51	8.15	4.94	1.74	3.49	2.79	7.28	4.19	0.22	0.8	12.33	54.24
2017	7.28	3.78	2.11	2.12	4.28	11.53	6.82	4.47	3.75	0.97	0.2	2.76	50.07
2018	4.26	10.50	5.38	3.72	5.06	7.97	5.99	5.67	2.67	5.66	6.94	11.86	75.68
2019	6.53	2.76	3.43	3.94	1.78	3.62	6.36	4.15	0.31	6.43	1.74	6.95	48.00
2020	4.06	6.42	2.02	4.42	2.16	5.31	4.00	8.81	13.44	3.19	1.95	4.53	60.31
2021	5.45	6.43	3.48	8.57	2.56	8.18	7.74	9.37	5.08	4.62	0.30	4.10	65.88
2022	5.24	1.14	11.24	5.77	7.84	1.62	5.80	4.78	0.50	2.13	2.83		

Deviation from the Average Monthly Rainfall													
Inches	0.31	-4.00	5.94	1.39	4.36	-3.38	-0.34	-0.58	-3.95	-0.68	-0.49		-1.43
Monthly Average Rainfall, 1952-2021													
AVG.	4.93	5.14	5.30	4.38	3.48	5.00	6.14	5.36	4.45	2.81	3.32	4.42	54.74
% of Annual Rainfall Occuring each Month													
	9.0%	9.4%	9.7%	8.0%	6.4%	9.1%	11.2%	9.8%	8.1%	5.1%	6.1%	8.1%	
Record High/Low for the Month													
LOW	0.75	0.82	0.84	0.13	0.09	1.07	1.19	0.84	0.31	0.00	0.20	0.25	28.68
HIGH	13.62	12.86	11.54	13.18	10.03	12.90	13.71	14.35	16.84	9.61	8.14	15.31	80.56



Jackson County
Monthly Cumulative Rainfall, 1952 - 2021
North Florida Research & Education Center Marianna, FL



YEAR	JAN	FEB	MAR	APR	MAY	JUNE	JULY	AUG	SEP	OCT	NOV	DEC	Wet Ranking	Dry Ranking
1952	1.14	10.02	14.50	16.61	21.74	22.86	28.81	37.62	40.71	41.36	44.62	48.04	53	18
1953	4.84	12.10	15.13	23.56	25.99	29.96	36.80	38.43	44.76	45.41	49.50	64.81	16	55
1954	1.33	4.82	7.44	10.02	11.98	15.44	18.72	21.56	23.28	24.58	27.24	28.68	70	1
1955	3.66	5.49	6.33	12.13	15.16	16.78	23.53	27.28	29.72	31.82	32.54	33.31	69	2
1956	3.59	8.77	12.54	14.58	18.61	24.06	32.58	36.67	43.11	48.19	48.47	51.81	43	28
1957	0.75	3.40	8.57	14.31	18.91	24.66	34.49	40.40	57.24	58.55	64.79	67.01	12	59
1958	4.48	8.09	12.82	20.04	25.61	31.61	40.00	43.45	47.13	49.01	50.76	53.08	38	33
1959	3.67	10.73	19.23	24.96	31.91	35.68	40.51	44.18	47.25	55.18	55.39	56.92	27	44
1960	3.36	10.44	13.85	20.65	23.85	28.60	33.57	38.37	44.59	46.59	47.06	49.41	47	24
1961	4.23	8.38	12.02	17.59	21.56	25.97	29.96	41.05	43.65	43.65	46.49	52.72	41	30
1962	1.72	4.52	12.65	15.93	18.79	22.46	30.43	36.50	39.57	42.39	47.55	49.22	48	23
1963	7.31	10.33	13.51	14.87	18.37	26.36	31.52	33.02	38.27	38.28	42.50	48.55	51	20
1964	10.80	17.61	24.02	33.49	35.72	41.40	50.62	53.69	61.16	70.77	74.12	80.56	1	70
1965	2.63	8.72	14.23	18.19	18.37	27.97	31.23	35.41	39.89	43.30	45.11	48.71	50	21
1966	5.56	15.40	17.97	18.74	24.54	27.67	30.92	40.74	45.83	47.24	49.27	53.89	36	35
1967	8.27	11.59	13.78	13.91	16.52	23.54	30.03	33.61	35.01	36.87	39.27	47.25	56	15
1968	1.28	3.58	6.98	9.48	12.87	14.05	19.50	24.11	27.10	28.51	33.62	38.96	63	8
1969	1.68	5.17	12.25	16.79	19.80	21.51	34.69	37.74	43.38	44.88	46.10	49.90	46	25
1970	4.16	13.36	22.22	24.05	25.86	29.55	34.59	42.60	43.09	47.49	49.70	52.83	40	31
1971	1.97	8.08	15.23	18.40	21.43	25.28	30.48	37.24	39.71	41.55	43.49	47.19	57	14
1972	3.62	9.65	16.06	16.44	19.31	28.20	31.98	37.37	39.51	41.95	45.24	49.01	49	22
1973	8.14	15.85	24.23	31.83	38.70	42.33	53.45	57.96	63.36	63.63	67.27	72.60	5	66
1974	5.24	11.04	13.70	17.10	20.88	22.44	25.73	33.74	38.42	39.26	41.40	44.29	61	10
1975	10.21	16.57	21.48	31.83	35.80	39.90	53.61	59.01	62.82	67.17	70.06	73.34	4	67
1976	6.99	8.49	13.38	15.25	24.14	27.22	30.25	33.72	39.19	45.37	51.09	55.06	32	39
1977	3.47	5.28	11.80	12.68	13.28	19.64	23.19	28.41	38.24	40.83	48.97	53.16	37	34
1978	7.28	10.56	17.81	22.46	29.19	32.98	40.23	45.13	46.11	46.31	52.32	55.97	29	42
1979	7.30	15.08	18.34	26.09	32.31	33.62	41.11	47.41	58.92	59.45	63.92	66.76	13	58
1980	6.58	9.54	21.08	30.37	34.87	38.37	44.24	46.77	51.33	56.04	57.56	57.81	25	46
1981	1.70	7.02	12.96	15.99	18.72	23.46	27.48	30.01	32.45	34.20	35.05	39.99	62	9
1982	4.17	9.78	12.69	18.62	24.01	27.01	34.52	38.94	44.94	47.59	49.93	59.07	24	47
1983	4.92	11.76	20.29	28.17	30.44	36.10	37.29	39.82	48.79	52.31	58.21	65.86	15	56
1984	5.49	10.50	19.12	25.41	27.91	33.22	45.23	50.99	51.31	52.91	54.54	55.34	30	41
1985	4.60	9.06	11.66	12.84	17.28	22.96	26.64	32.22	33.64	41.06	48.97	54.31	33	38
1986	5.68	15.95	19.16	19.99	22.25	24.10	26.85	30.97	33.32	35.54	39.94	45.62	59	12
1987	8.62	14.14	21.37	21.77	26.23	31.66	37.17	41.35	43.62	43.68	47.70	48.51	52	19
1988	5.57	11.97	20.38	23.07	23.35	24.42	29.85	33.83	39.36	41.34	44.62	45.85	58	13
1989	1.59	4.33	9.29	12.92	19.93	32.83	44.02	47.08	50.44	57.64	62.35	67.80	10	61
1990	5.26	9.83	14.38	17.38	20.60	24.62	28.27	31.18	32.03	33.37	34.30	37.72	66	5
1991	13.62	17.06	26.06	31.38	41.41	46.71	57.38	61.27	62.80	63.97	65.57	68.57	8	63
1992	8.37	14.66	22.58	25.08	26.49	37.65	46.34	53.06	56.25	58.33	65.73	68.66	7	64
1993	12.00	15.38	22.79	24.29	25.89	30.07	36.75	40.64	44.08	46.98	49.25	52.88	39	32
1994	8.64	11.17	17.42	21.76	23.58	34.99	45.94	55.02	61.46	69.08	71.61	75.40	3	68
1995	5.23	8.36	12.65	17.00	20.90	26.46	29.48	35.64	36.50	44.01	48.13	49.91	45	26
1996	3.64	9.63	18.10	23.86	25.36	30.79	33.62	47.90	53.22	57.03	59.04	62.69	18	53
1997	6.68	11.97	14.60	24.68	30.59	37.00	42.73	47.38	51.16	53.26	60.11	68.55	9	62
1998	6.28	14.58	20.69	22.93	24.38	26.73	31.10	33.30	49.61	49.91	51.96	53.94	35	36
1999	6.95	9.85	13.46	14.96	21.67	30.66	39.30	43.32	47.65	50.78	54.34	56.84	28	43

YEAR	JAN	FEB	MAR	APR	MAY	JUNE	JULY	AUG	SEP	OCT	NOV	DEC	Ranking	Ranking
2000	3.78	8.74	13.22	17.27	17.36	21.36	24.76	31.91	39.11	39.82	44.25	47.46	55	16
2001	2.16	2.98	12.98	14.97	17.49	25.73	30.39	38.60	40.50	42.01	43.71	44.49	60	11
2002	3.82	6.26	11.77	17.55	19.74	23.19	33.53	36.83	48.66	56.02	63.78	69.77	6	65
2003	2.30	9.33	17.51	22.40	25.51	31.62	39.46	45.45	47.84	51.42	54.46	57.58	26	45
2004	3.19	10.85	11.75	16.12	17.31	23.97	28.89	30.56	40.57	44.46	49.43	52.68	42	29
2005	3.33	5.64	14.69	21.73	23.40	30.87	40.31	52.02	53.64	53.67	56.82	61.63	20	51
2006	4.82	8.72	9.63	11.24	16.21	18.20	20.42	25.60	26.51	29.60	33.01	38.44	64	7
2007	5.99	8.44	9.54	10.53	12.10	16.07	20.01	24.19	25.46	30.25	32.14	36.17	67	4
2008	4.26	13.26	22.37	26.65	28.11	36.75	40.77	50.06	50.80	55.91	59.09	67.32	11	60
2009	2.33	5.59	12.70	20.43	29.60	32.38	36.26	39.45	44.67	48.06	50.41	59.98	23	48
2010	7.53	11.52	14.93	18.94	24.03	26.95	29.26	30.10	31.43	31.65	37.47	38.10	65	6
2011	4.33	8.37	13.37	14.29	15.07	16.73	21.84	23.71	25.97	27.81	29.75	33.50	68	3
2012	3.79	11.28	17.22	20.39	21.81	29.16	34.21	48.56	53.73	55.48	56.78	60.88	21	50
2013	1.05	13.91	16.90	20.44	21.08	24.80	38.19	51.36	53.50	55.46	59.37	63.81	17	54
2014	2.15	7.14	14.84	28.02	32.05	34.37	40.06	42.61	48.64	50.67	56.60	61.92	19	52
2015	3.40	7.20	9.37	18.89	22.44	26.48	31.33	34.08	38.23	39.23	46.56	55.23	31	40
2016	4.80	8.31	16.46	21.40	23.14	26.63	29.42	36.70	40.89	41.11	41.91	54.24	34	37
2017	7.28	11.06	13.17	15.29	19.57	31.10	37.92	42.39	46.14	47.11	47.31	50.07	44	27
2018	4.26	14.76	20.14	23.86	28.92	36.89	42.88	48.55	51.22	56.88	63.82	75.68	2	69
2019	6.53	9.29	12.72	16.66	18.44	22.06	28.42	32.57	32.88	39.31	41.05	48.00	54	17
2020	4.06	10.48	12.50	16.92	19.08	24.39	28.39	37.20	50.64	53.83	55.78	60.31	22	49
2021	5.45	11.88	15.36	23.93	26.49	34.67	42.41	51.78	56.86	61.48	61.78	65.88	14	57
2022	5.24	6.38	17.62	23.39	31.23	32.85	38.65	43.43	43.93	46.06	48.89	0.00		

Deviation from the Average Accumulation

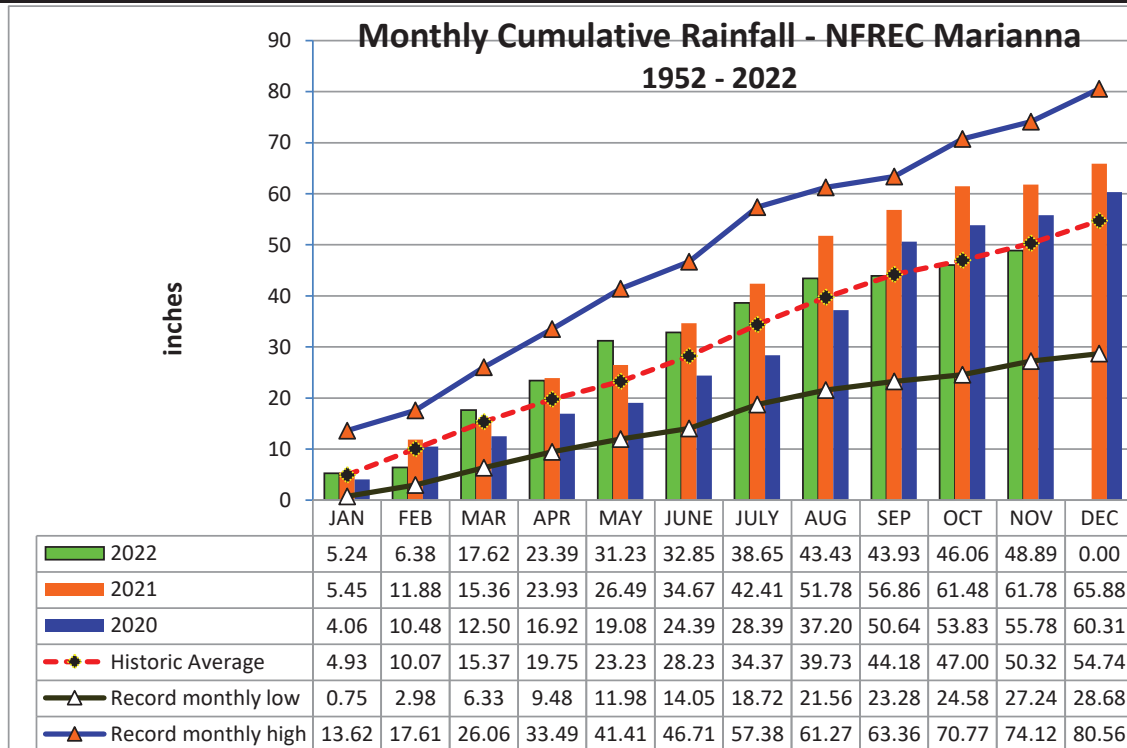
Inches	0.31	-3.69	2.25	3.64	8.00	4.62	4.28	3.70	-0.25	-0.94	-1.43	
--------	------	-------	------	------	------	------	------	------	-------	-------	-------	--

Average Accumulation, 1952-2021

Inches	4.93	10.07	15.37	19.75	23.23	28.23	34.37	39.73	44.18	47.00	50.32	54.74
--------	------	-------	-------	-------	-------	-------	-------	-------	-------	-------	-------	-------

Record High/Low Accumulation

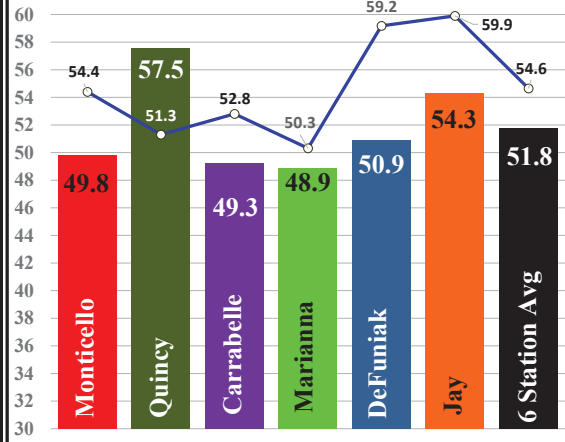
LOW	0.75	2.98	6.33	9.48	11.98	14.05	18.72	21.56	23.28	24.58	27.24	28.68
HIGH	13.62	17.61	26.06	33.49	41.41	46.71	57.38	61.27	63.36	70.77	74.12	80.56



2022 UF/IFAS FAWN Panhandle Weather Station Summary

FAWN Station	Data	Jan	Feb	Mar	Apr	May	June	July	Aug	Sept	Oct	Nov	Total
Monticello	Rain	4.2	1.1	10.1	3.2	6.1	2.6	9.6	6.0	2.1	0.3	4.6	49.8
	Hist Avg	4.5	4.6	6.1	4.1	3.4	5.7	7.0	6.9	5.4	3.6	3.1	54.4
	Deviation	-0.3	-3.5	4.0	-0.9	2.7	-3.1	2.6	-0.9	-3.3	-3.4	1.5	-4.6
Quincy	Rain	5.2	1.2	12.8	4.1	6.6	4.5	11.0	7.2	1.6	0.4	3.0	57.5
	Hist Avg	5.0	4.3	5.6	3.7	4.2	5.2	6.3	6.2	4.1	3.4	3.3	51.3
	Deviation	0.2	-3.1	7.2	0.4	2.4	-0.7	4.7	1.0	-2.5	-3.0	-0.3	6.2
Carrabelle	Rain	2.3	0.7	9.5	1.3	5.0	6.6	7.6	6.2	5.7	1.7	2.7	49.3
	Hist Avg	3.8	3.7	4.9	3.0	2.7	5.3	7.3	7.9	7.3	3.7	3.2	52.8
	Deviation	-1.5	-3.0	4.6	-1.7	2.3	1.3	0.3	-1.7	-1.6	-2.1	-0.6	-3.6
Marianna	Rain	5.2	1.1	11.2	5.8	7.8	1.6	5.8	4.8	0.5	2.1	2.8	48.9
	Hist Avg	4.9	5.1	5.3	4.4	3.5	5.0	6.1	5.4	4.4	2.8	3.3	50.3
	Deviation	0.3	-4.0	5.9	1.4	4.4	-3.4	-0.3	-0.6	-3.9	-0.7	-0.5	-1.4
DeFuniak	Rain	4.5	0.6	7.4	3.8	5.2	5.6	10.8	5.5	1.8	2.7	2.8	50.9
	Hist Avg	4.9	5.4	5.6	3.9	4.5	7.1	7.2	6.3	5.7	3.7	4.8	59.2
	Deviation	-0.4	-4.8	1.8	-0.1	0.7	-1.6	3.6	-0.8	-3.8	-1.0	-2.0	-8.3
Jay	Rain	2.3	3.0	7.2	5.4	10.0	4.2	10.3	7.8	0.4	0.8	3.0	54.3
	Hist Avg	5.5	5.3	6.6	4.8	4.8	5.8	7.0	6.2	5.5	3.3	5.1	59.9
	Deviation	-3.2	-2.3	0.6	0.6	5.2	-1.6	3.3	1.6	-5.1	-2.5	-2.1	-5.6
6 Station Average		4.0	1.3	9.7	3.9	6.8	4.2	9.2	6.2	2.0	1.3	3.1	51.8
6 Station Historic Average		4.8	4.7	5.7	4.0	3.9	5.7	6.8	6.5	5.4	3.4	3.8	54.6
Deviation from Avg		-0.8	-3.4	4.0	0.0	2.9	-1.5	2.4	-0.2	-3.4	-2.1	-0.7	-2.9

**Panhandle FAWN Station
2022 Rainfall vs Historic Average**



FAWN Station	Monticello	Quincy	Carrabelle	Marianna	DeFuniak	Jay	Average
Rainfall	49.8	57.5	49.3	48.9	50.9	54.3	51.8
Historic Average	54.4	51.3	52.8	50.3	59.2	59.9	54.6