



BRAND
A645-80
115 DAYS
GENETIC FAMILY GX H

INPUT	VIPTERA 3110 GT CONV
OUTPUT	CONV

PRODUCT FEATURES

GDUS FROM PLANTING TO MID-POLLEN	1460
GDUS FROM PLANTING TO BLACK LAYER	2845
PLANT HEIGHT	TALL
EAR HEIGHT	MEDIUM HIGH
KERNEL TEXTURE	MEDIUM
NITROGEN UTILIZATION	FLEXIBLE
HARVEST TIMING	NORMAL
FOLIAR FUNGICIDE RESPONSE	MODERATE
GREENSNAP VULNERABILITY	LOW

AGRONOMIC RATING

TEST WEIGHT	██████○
EMERGENCE	██████○
DROUGHT TOLERANCE	██████○
DRY DOWN	██████○
ROOT STRENGTH	██████○
STALK STRENGTH	██████○

SOIL ADAPTABILITY

CLAY	██████○
CLAY LOAM	██████○
SILTY CLAY LOAM	██████○
SILT LOAM	██████○
SANDY LOAM	██████○
SAND	██████○

PLANTING APPLICATIONS

SILAGE	██████○
IRRIGATION	██████○
NARROW ROWS	██████○
CORN ON CORN	██████○
NO-TILL	██████○
POORLY DRAINED	██████○

DISEASE TOLERANCE

ANTHRACNOSE STALK ROT	██████○
PHYSODERMA STALK ROT	██████○
SCLB	██████○
NCLB	██████○
GRAY LEAF SPOT	██████○
GOSS'S WILT	██████○
COMMON RUST	██████○
SOUTHERN RUST	██████○
TAR SPOT	██████○

PLANT CHARACTERISTICS

- LEAF ORIENTATION: SEMI UPRIGHT
- EAR FLEX: SEMI FLEXIBLE
- ROOT TYPE: MODIFIED

MANAGING FOR OPTIMAL PERFORMANCE

EXCELLENT EAR FLEX ALLOWS FOR PLANTING POPULATIONS TO MATCH YIELD POTENTIAL
EXCELLENT DUAL PURPOSE HYBRID TO MAXIMIZE SILAGE ACRES
PROVIDES TREMENDOUS YIELD STABILITY UNDER VARIABLE CONDITIONS

PLANTING POPULATION

ROW TYPE	LOW	MEDIUM	HIGH
30"	26-30,000	30-33,000	33-35,000
Narrow	30-32,000	32-34,000	34-36,000



KEY PRODUCT HIGHLIGHTS

CHARACTERISTICS

- Strong emergence & early vigor
- Excellent agronomics & disease tolerance
- Consistent grain yields & excellent silage choice
- Tremendous eye appeal & late season health
- Excellent ear flex

PLACEMENT RECOMMENDATIONS

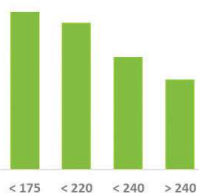
- Plant at moderate populations to capture ear flex potential
- Will maintain yield stability across variable soils
- Adapted to all production systems & handles wet feet extremely well
- Utilize at end of planting season to capitalize on tremendous ear worm control

38" ROW TYPE PLANTING POPULATION

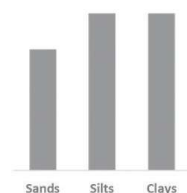
- Low: 28-30,000
- Medium: 30-32,000
- High: 32-34,000

GENETICS X ENVIRONMENT

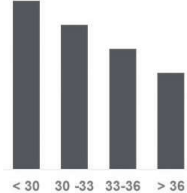
YIELD ENVIRONMENT



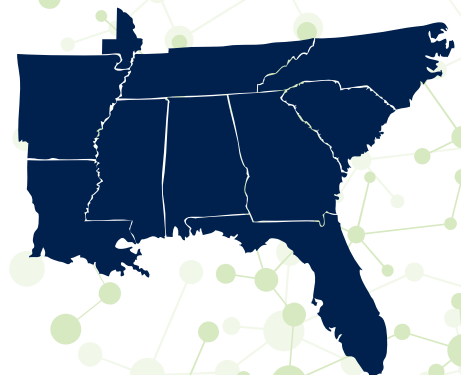
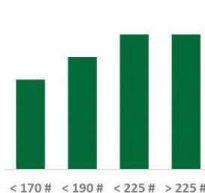
SOIL CLASS



HARVEST POPULATIONS



APPLIED NITROGEN



Seed Southern Farmers Depend On



For more information about the seed southern farmers depend on, visit agrigold.com.

Ratings are assigned by AgriGold based on comparisons with other AgriGold® products (not competitive products) through in-house field testing. Individual results may vary, and performance may vary from location to location and from year to year. This result may not be an indicator of results you may obtain as local growing, soil and weather conditions may vary. Growers should evaluate data from multiple locations and years whenever possible.