



# ADDING VALUE TO WEANED CALVES

**UF** | **IFAS Extension**  
UNIVERSITY of FLORIDA  
K A L Y N W A T E R S



# LIVING THE HIGH LIFE

## Theory of the First 80%



Cow/Calf

Stocker



2020's



1920'S



GENETICS

CASTRATION  
IMPLANTING

PRECONDITIONING



# MORTALITY/MORBIDITY

Assessing the Stocker Operation Using Benchmarks

Jane Parish – Extension Beef Cattle Specialist, Mississippi

State University

**Table 1. Calf morbidity rates considered low- or high-risk by stocker operators**

	Low-risk morbidity rate	High-risk morbidity rate
Pure stocker operators (not also cow-calf or feedlot operations)	6.6%	27.5%
All stocker operations running 2,500+ head	7.1%	31.5%
Stocker operators younger than 35 years of age	6.9%	30.2%

**Table 2. Calf mortality rates during the first 90 days by stocker operation size**

Operation size, number of head	Mortality (death loss) rate
1-199	1.2%
200-499	1.2%
500-999	1.4%
1,000-2,499	1.7%
>2,500	1.9%



# Steers vs. Bulls

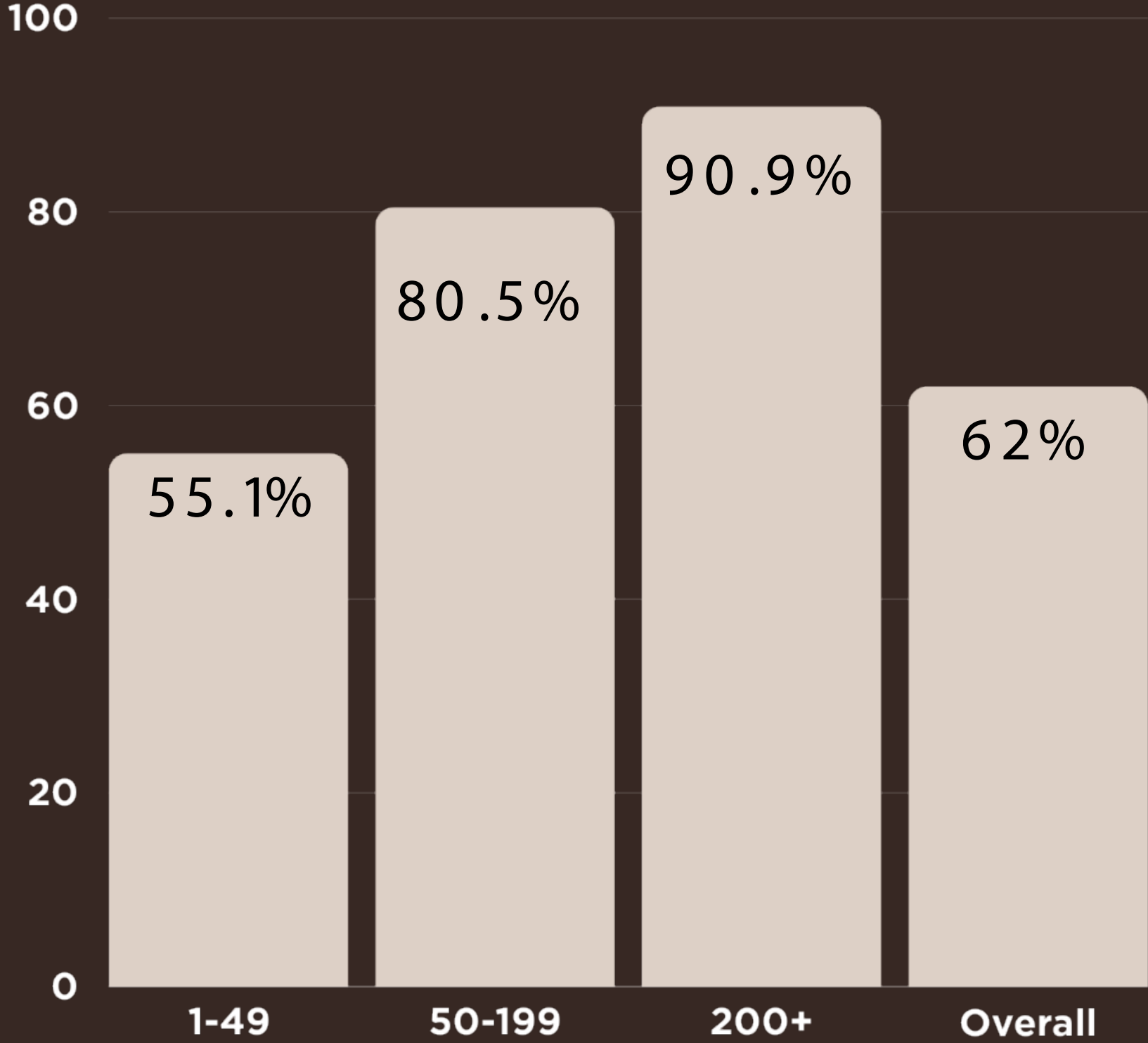
Average Prices from 2/2-10/2024 in Florida on #1 Calves

	325		425		525		625	
Steer	\$4.22	\$1,371.50	\$3.48	\$1,479.00	\$2.92	\$1,533.00	\$2.67	\$1,668.75
Bull	\$4.10	\$1,332.50	\$3.46	\$1,470.50	\$2.70	\$1,417.50	\$2.42	\$1,512.50
Difference	\$0.12	\$39.00	\$0.02	\$8.50	\$0.22	\$115.50	\$0.25	\$156.25



# CASTRATION

■ % Calves Castrated before Weaning



# EFFECTS OF CASTRATION AGE AND A GROWTH IMPLANT DURING SUCKLING ON WEANING AND PRECONDITIONED WEIGHTS

T. T. MARSTON, D. A. LLEWELLYN, L. C. HOLLIS, AND J. W. HOMM  
K-STATE CATTLEMEN'S DAY 2003

## Early Castration

90 DAYS OF AGE

## Early Castration w/ Synovex C

90 DAYS OF AGE

## Castration at Weaning

226 DAYS OF AGE



# EFFECTS OF CASTRATION AGE AND A GROWTH IMPLANT DURING SUCKLING ON WEANING AND PRECONDITIONED WEIGHTS

T. T. MARSTON, D. A. LLEWELLYN, L. C. HOLLIS, AND J. W.  
HOMM  
K-STATE CATTLEMEN'S DAY 2003

## At Weaning

EARLY CASTRATED + IMPLANTED  
15 LBS HEAVIER THAN BULLS

## 28 Days After Weaning

EARLY CASTRATED + IMPLANTED  
WT 20 LBS MORE THAN OTHERS





# CASTRATION

DURING THE STOCKER PHASE

**Morbidity**  
17.5% vs. 38.4%

100 hd – 525 lbs  
Med Cost/ Trt = \$15

Draxxin KP @ \$2.45/cc – 1.1cc/100 lbs

Morbidity Decreases Net Returns Ave. 15%

**Mortality**  
4% vs. 7.6%

	Price		Morbidity	Treatment Cost	Death Loss	Total Cost	Cost/Hd
Steers	\$2.92	\$1,533	17.5%	\$270	\$6,132	\$6,402	\$64.02
Bulls	\$2.70	\$1,417	38.4%	\$570	\$11,336	\$11,906	\$119.06

# CASTRATION

DURING THE STOCKER PHASE

**Average Daily Gain**

Range = 0.11 to 0.35 lbs/d

or 13.5% less at least 30 days

	Price		Morbidity	Treatment Cost	Death Loss	Gain Loss/hd	Total Loss	Cost/Hd
Steers	\$2.92	\$1,533	17.5%	\$270	\$6,132	\$0.00	\$6,402	\$64.02
Bulls	\$2.70	\$1,417	38.4%	\$570	\$11,336	\$1,069.50	\$12,975.50	\$129.76

ADG = 2 lbs/day - 0.25lbs x 30 days = 7.5 lbs

Target Market Wt = 800 lbs

Market Price on 800 lbs Steers = \$2.30 = \$17.25/hd loss

**Cost/Hd Difference**

**\$65.74**

# CASTRATION

At Weaning

EARLY CASTRATED + IMPLANTED  
15 LBS HEAVIER THAN BULLS



Average Prices from 2/2-10/2024  
in Florida on #1 Calves 525 lbs

Steer	\$2.92
Bull	\$2.70
Difference	\$0.22

30 Head Calves

Labor \$500 = \$16.50/hd

Implants = \$2.05/hd

Cost of Castration = \$18.55

W W Steers = 525 -- \$1,533

W W Bulls = 510 -- \$1,377

Difference \$156 - \$18.55 = \$137.45

**\$137.45 X 30 = \$4,123.50**



# EFFECTS OF CASTRATION AGE AND A GROWTH IMPLANT DURING SUCKLING ON WEANING AND PRECONDITIONED WEIGHTS

T. T. MARSTON, D. A. LLEWELLYN, L. C. HOLLIS, AND J. W. HOMM  
K-STATE CATTLEMEN'S DAY 2003

At Weaning

EARLY CASTRATED + IMPLANTED  
15 LBS HEAVIER THAN BULLS

28 Days After  
Weaning

EARLY CASTRATED + IMPLANTED  
WT 20 LBS MORE THAN OTHERS

# PROGRAMS

59.8% - NO TRAGET PROGRAM

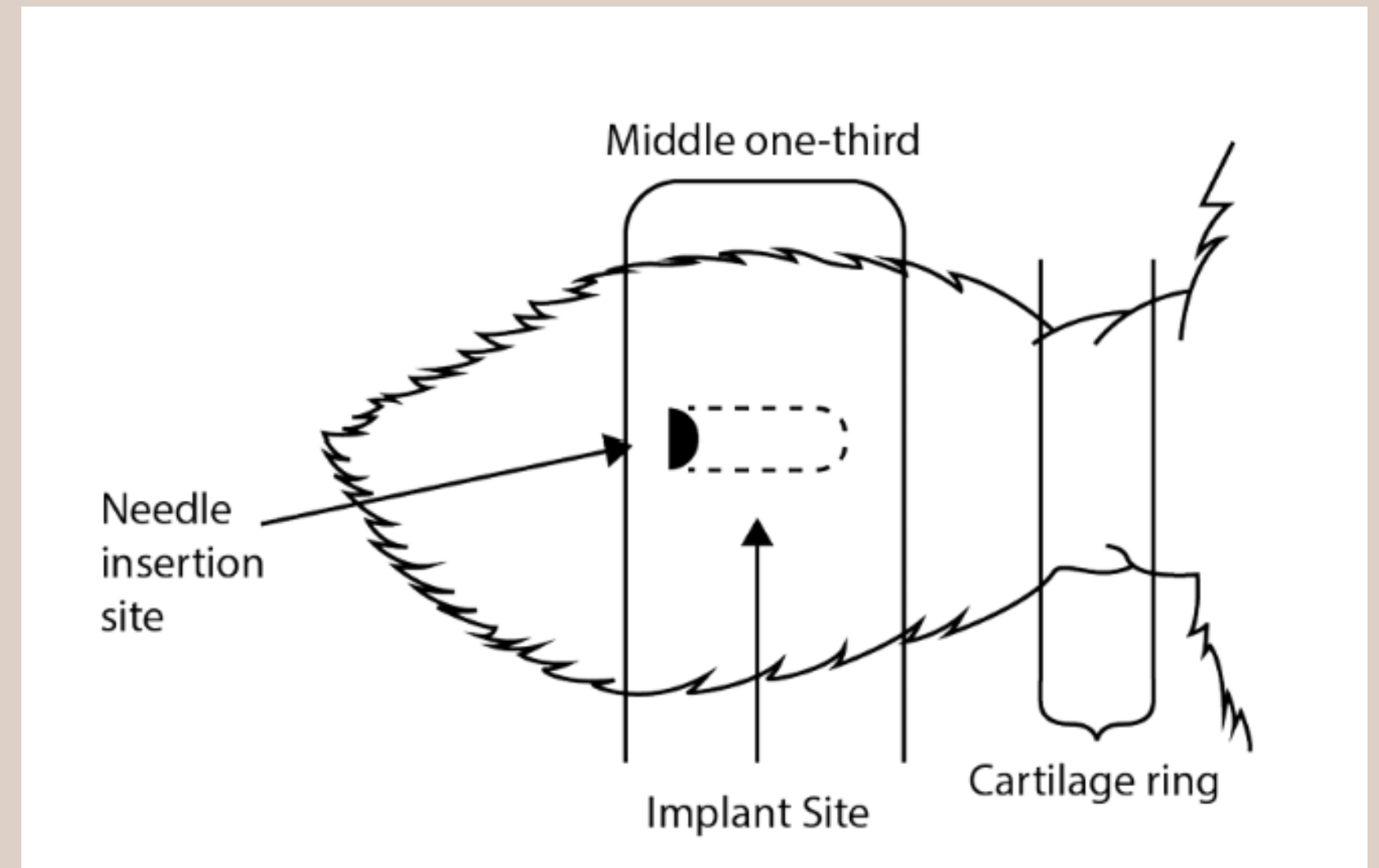


Percent Operations								
Herd Size (number of beef cows)								
Marketing channel	Small (1-49)		Medium (50-199)		Large (200 or more)		All operations	
	Pct.	Std. error	Pct.	Std. error	Pct.	Std. error	Pct.	Std. error
Breed-influenced program	7.7	(1.0)	15.6	(1.7)	20.9	(2.7)	9.9	(0.9)
Age-and-source verification program	3.3	(0.7)	12.4	(1.6)	18.0	(2.3)	5.9	(0.6)
Conventional	59.1	(2.0)	62.2	(2.3)	60.4	(3.2)	59.8	(1.5)
Natural	13.4	(1.4)	17.9	(1.9)	26.1	(3.0)	14.9	(1.1)
Grass-fed	23.0	(1.7)	18.4	(1.9)	22.8	(3.2)	22.1	(1.3)
Certified organic*	0.5	(0.2)	0.4	(0.3)	1.2	(0.7)	0.5	(0.2)

\*Operation certified to the USDA organic standards.



# Growth Implants



Estrogens  
Androgens  
Progestins

**Table 2. Beef cattle implants approved for use in sucking calves and calves less than 400 pounds.**

Steer	Heifer	Implant	Company	Ingredient/dose	Relative Potency	Payout
x	x	Ralgro®	Merck	36 g zeranol	Low	70 to 100
x		Compudose®	Elanco	25.7 mg estradiol	Moderate	200
x		Encore®	Elanco	43.9 mg estradiol	Moderate	400
x	x	Synovex®-C	Zoetis	100 mg progesterone		
				10 mg estradiol benzoate	Low	70 to 100
x	x	Component® E-C w/ Tylan®	Elanco	100 mg progesterone		
				10 mg estradiol benzoate		
				29 mg tylosin tartrate <sup>1</sup>	Low	70 to 100

<sup>1</sup> Local antibiotic.

**Table 3. Beef cattle implants approved for use in stocker calves and growing calves in confinement more than 400 pounds.**

Steer	Heifer	Implant	Company	Ingredient/dose	Relative Potency	Payout
x	x	Ralgro®	Merck	36 g zeranol	Low	70 to 100
x		Compudose®	Elanco	25.7 mg estradiol	Low	200
x		Encore®	Elanco	43.9 mg estradiol	Low	400
x		Synovex®-S	Zoetis	200 mg progesterone		
				20 mg estradiol benzoate	Moderate	90 - 120
x		Component® E-S w/ Tylan®	Elanco	200 mg progesterone		
				20 mg estradiol benzoate		
				29 mg tylosin tartrate <sup>1</sup>	Moderate	90 - 120
	x	Synovex®-H	Zoetis	200 mg testosterone propionate		
				20 mg estradiol benzoate	Moderate	90 - 120
	x	Component® E-H w/ Tylan®	Elanco	200 mg testosterone propionate		
				20 mg estradiol benzoate		
				29 mg tylosin tartrate <sup>1</sup>	Moderate	90 - 120
x	x	Revalor®-G	Merck	40 mg trenbolone acetate		
				8 mg estradiol	Moderate	100 - 140
x	x	Component® TE-G w/ Tylan®	Elanco	40 mg trenbolone acetate		
				8 mg estradiol		
				29 mg tylosin tartrate <sup>1</sup>	Moderate	100 - 140
x	x	Synovex® One Grass	Zoetis	150 mg trenbolone acetate		
				21 mg estradiol benzoate	Moderate	180 - 200

<sup>1</sup> Local antibiotic.

# TYPES OF IMPLANTS

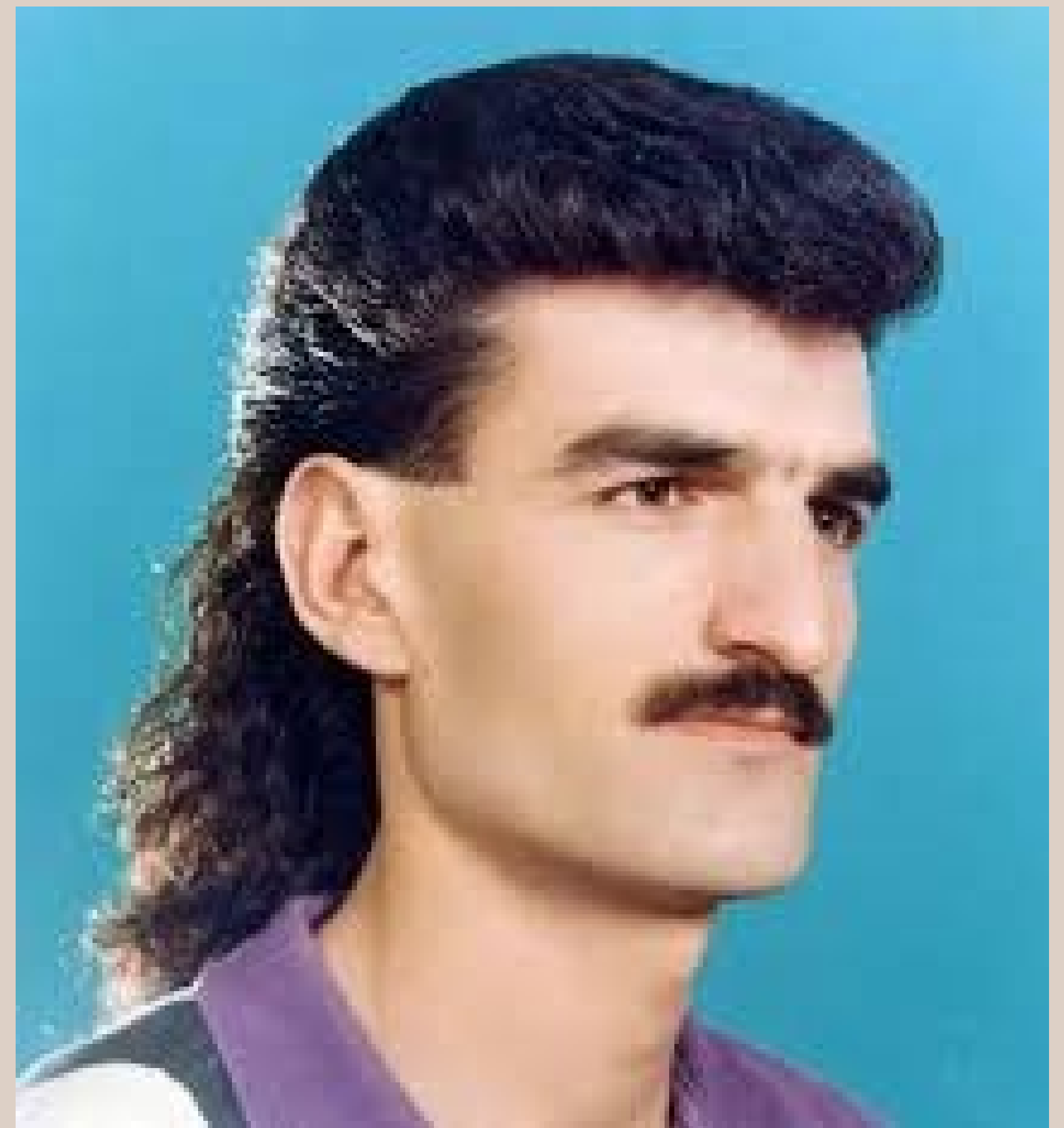
Increase ADG  
0.1 - 0.2 lbs.

15-20 lbs. over Payout

# Growth Implants



1950's - 1960's  
Approved for Use



1970's - 1980's - Heavily  
Researched and Proven



1990's – 2000's Everyone becomes confused about how we "feel" about implants



Current Status  
*It Is What It Is*



692 LBS.



20 LB.

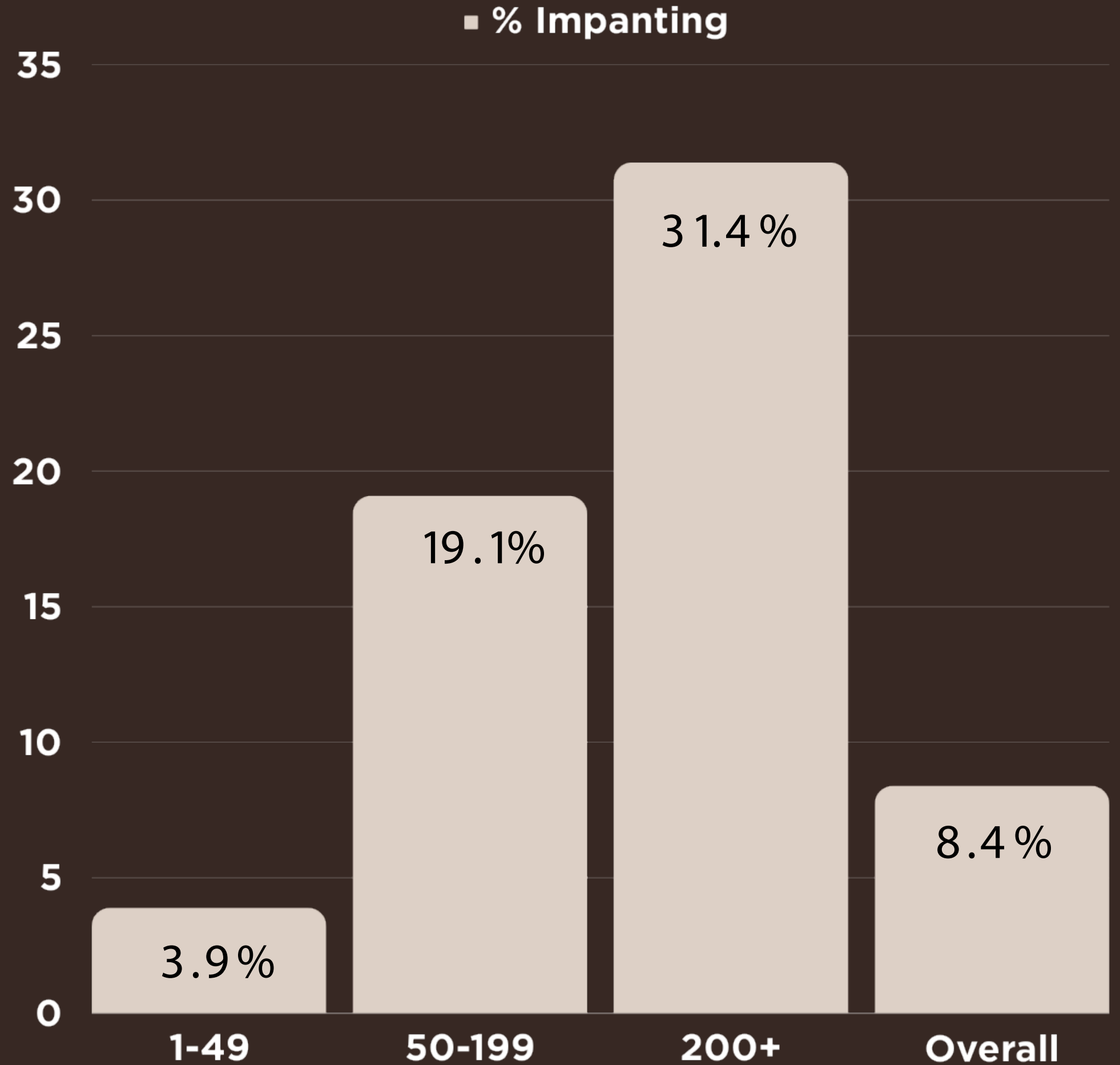
DIFFERENCE

712 LBS.

# IMPLANTS PRIOR TO WEANING

77% IMPLANTED IN STOCKER  
PHASE

94% IMPLANTED IN FINISHING  
PHASE



Merck Animal Health partnered with Superior Livestock Auction and Kansas State University

2.5 Million Head

\$0.00

Actual Purchase Data

Discount

**Average Prices from 2/2-  
10/2024 in Florida on #1  
Calves 525 lbs**

**Steer**

**\$2.92**



**15 lbs = \$44**



# Make Hay When it Rains



# CASTRATION

DURING THE STOCKER PHASE

**Morbidity**  
17.5% vs. 38.4%

100 hd – 525 lbs  
Med Cost/ Trt = \$15  
Draxxin KP @ \$2.45/cc – 1.1cc/100 lbs

**Mortality**  
4% vs. 7.6%

	Price		Morbidity	Treatment Cost	Death Loss	Total Cost	Cost/Hd
Steers	\$2.92	\$1,533	17.5%	\$270	\$6,132	\$6,402	\$64.02
Bulls	\$2.70	\$1,417	38.4%	\$570	\$11,336	\$11,906	\$119.06