



## Jackson County 2024 Weather Data

*73 Years of Weather Data Recorded at the UF/IFAS Marianna North Florida Research and Education Center*



**Doug Mayo**  
Jackson County Extension Director  
2009-2024 Weather Data

**Ed Jowers, Emeritus County Extension Director**  
1952-2008 Rainfall Data

Data provided by Florida Automated Weather Station (FAWN)  
UF/IFAS North Florida Research and Education Center  
Greenwood, Florida



<http://fawn.ifas.ufl.edu/>

Tower Name	Tower Number	Latitude Degree, Minutes	Latitude Degrees, Minutes, Seconds	Latitude Degrees Decimal	Longitude Degree, Minutes	Longitude Degrees, Minutes, Seconds	Longitude Degrees Decimal	Elevation Feet
Marianna	130.00	N 30°51.000'	N 30°50'00.00"	N 30.85000°	-85°09.910'	-85°09'54.60"	-85.16516°	115'

## 2024 UF/IFAS FAWN Marianna Weather Summary

Month	Rainfall Inches	Dev from Hist Avg	6' Air Temp			Soil Temp			Wind MPH	
			High	Low	Avg	High	Low	Avg	Avg	High
January	5.63	0.72	79	21	51	68	37	53	6.2	54.6
February	3.62	-1.42	81	34	57	74	45	58	5.1	45.5
March	4.70	-0.68	84	38	64	81	50	66	5.3	42.8
April	3.61	-0.79	88	46	69	93	58	75	5.7	42.6
May	9.11	5.52	93	61	77	100	69	82	4.4	39.7
June	2.62	-2.30	100	67	82	106	74	89	4.3	38.6
2024	29.29	1.05	100	21	66	106	37	70	5.2	54.6

Total days <32°

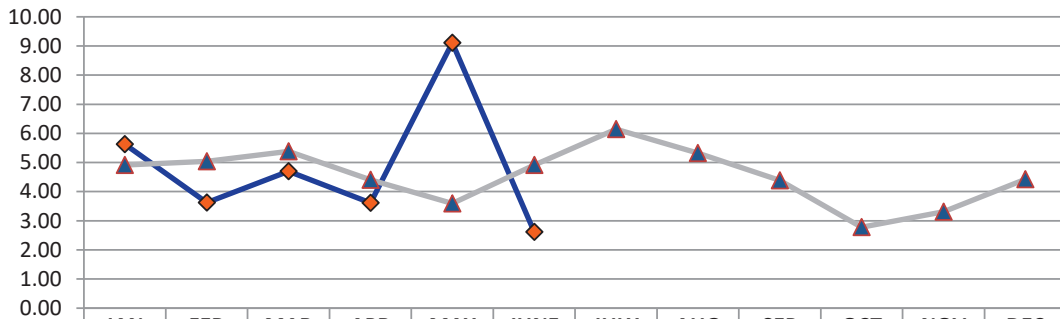
7

Total days >95°

7

Data source: UF/IFAS Florida Automated Weather Network Marianna Station

### Monthly Rainfall @ Marianna FAWN



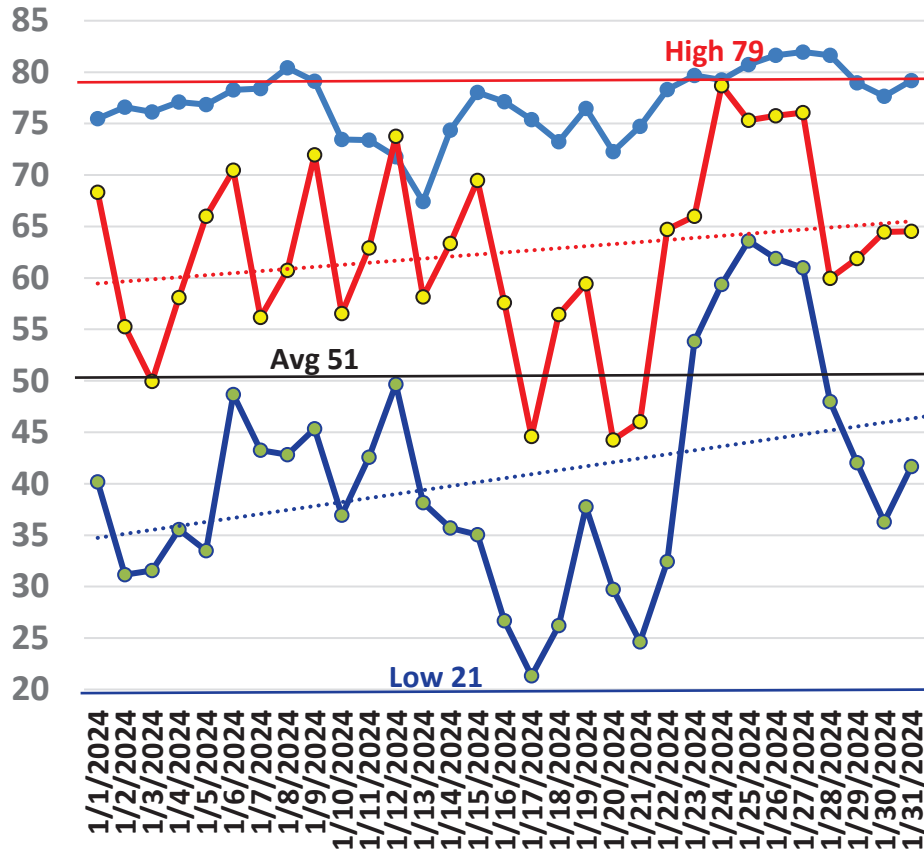
	JAN	FEB	MAR	APR	MAY	JUNE	JULY	AUG	SEP	OCT	NOV	DEC
2024	5.63	3.62	4.70	3.61	9.11	2.62						
Historic Avg	4.91	5.04	5.38	4.40	3.59	4.92	6.14	5.33	4.38	2.78	3.31	4.42

◆ 2024    ▲ Historic Avg

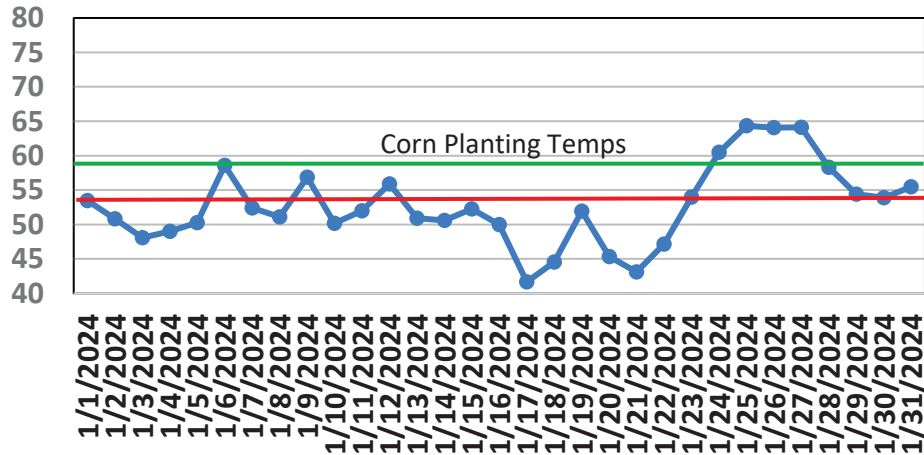
# January Daily Weather Data

Date	Temperature						Precipitation		Wind		
	Air Temp 6 ft			Soil Temp 4 inch			Rain	Evapo Transpo	Avg Wind	Min Wind	Max Wind
	Avg	Min	Max	Avg	Min	Max	Inches	Inches	mph	mph	mph
1/1/2024	54	40	68	53	47	61	0.00	0.05	7.3	0.0	22.9
1/2/2024	42	31	55	51	45	58	0.00	N/A	3.4	0.0	16.8
1/3/2024	42	32	50	48	45	51	0.07	0.04	3.7	0.0	15.9
1/4/2024	45	36	58	49	44	56	0.00	0.04	4.5	0.0	16.7
1/5/2024	50	34	66	50	43	58	0.83	0.05	6.0	0.0	22.1
1/6/2024	62	49	70	59	54	65	0.52	0.06	8.3	0.4	30.7
1/7/2024	49	43	56	52	49	56	0.00	0.04	6.1	0.1	20.1
1/8/2024	51	43	61	51	48	54	0.42	0.05	10.0	0.0	31.6
1/9/2024	58	45	72	57	50	62	2.69	0.07	14.3	0.2	54.6
1/10/2024	47	37	57	50	45	57	0.00	0.04	6.6	0.0	22.2
1/11/2024	52	43	63	52	48	58	0.00	0.05	3.0	0.0	9.9
1/12/2024	61	50	74	56	51	62	0.14	0.06	8.9	0.1	28.5
1/13/2024	46	38	58	51	46	58	0.00	0.04	7.8	0.1	25.5
1/14/2024	47	36	63	51	44	59	0.00	0.04	1.6	0.0	6.8
1/15/2024	53	35	69	52	44	61	0.00	0.05	2.6	0.0	15.2
1/16/2024	42	27	58	50	40	55	0.05	0.05	10.5	0.1	30.7
1/17/2024	31	21	45	42	37	49	0.00	0.03	4.7	0.0	18.7
1/18/2024	43	26	56	45	38	52	0.00	0.04	2.5	0.0	10.3
1/19/2024	53	38	59	52	47	58	0.04	0.05	9.1	0.5	27.0
1/20/2024	36	30	44	45	41	52	0.00	0.04	8.5	1.7	22.8
1/21/2024	34	25	46	43	37	51	0.00	0.04	4.0	0.0	17.9
1/22/2024	48	32	65	47	40	55	0.00	0.05	4.2	0.1	19.0
1/23/2024	59	54	66	54	51	58	0.00	0.05	3.5	0.0	17.3
1/24/2024	68	59	79	61	56	66	0.02	0.07	6.1	0.0	20.6
1/25/2024	69	64	75	64	62	67	0.17	0.06	6.9	0.3	34.9
1/26/2024	67	62	76	64	61	68	0.01	0.06	3.0	0.0	28.0
1/27/2024	67	61	76	64	62	68	0.67	0.06	6.5	0.0	28.4
1/28/2024	54	48	60	58	53	63	0.00	0.06	11.8	0.4	30.5
1/29/2024	51	42	62	54	50	61	0.00	0.06	8.3	0.4	25.1
1/30/2024	50	36	64	54	47	62	0.00	0.06	3.7	0.0	14.6
1/31/2024	53	42	65	55	50	64	0	0.07	5.9	0.1	20.7
<b>High</b>			<b>79</b>			<b>68</b>		<b>High</b>			<b>54.6</b>
<b>Low</b>		<b>21</b>			<b>37</b>			<b>Low</b>		<b>0.0</b>	
<b>Average</b>	<b>51</b>	41	62	<b>53</b>	48	59		<b>Average</b>	<b>6.2</b>		
Days over 95 <sup>u</sup>				0		<b>Total for Month</b>		<b>5.63</b>	<b>1.53</b>		
Days below 32 <sup>v</sup>				7		<b># of Rain Days</b>		12			
						<b>Historic Average</b>		4.91			
						<b>Deviation from Avg</b>		0.72			
<b>Net Gain/loss (Rain - ET)</b>								<b>4.10</b>			

## Jan Marianna FAWN 6' Air Temps



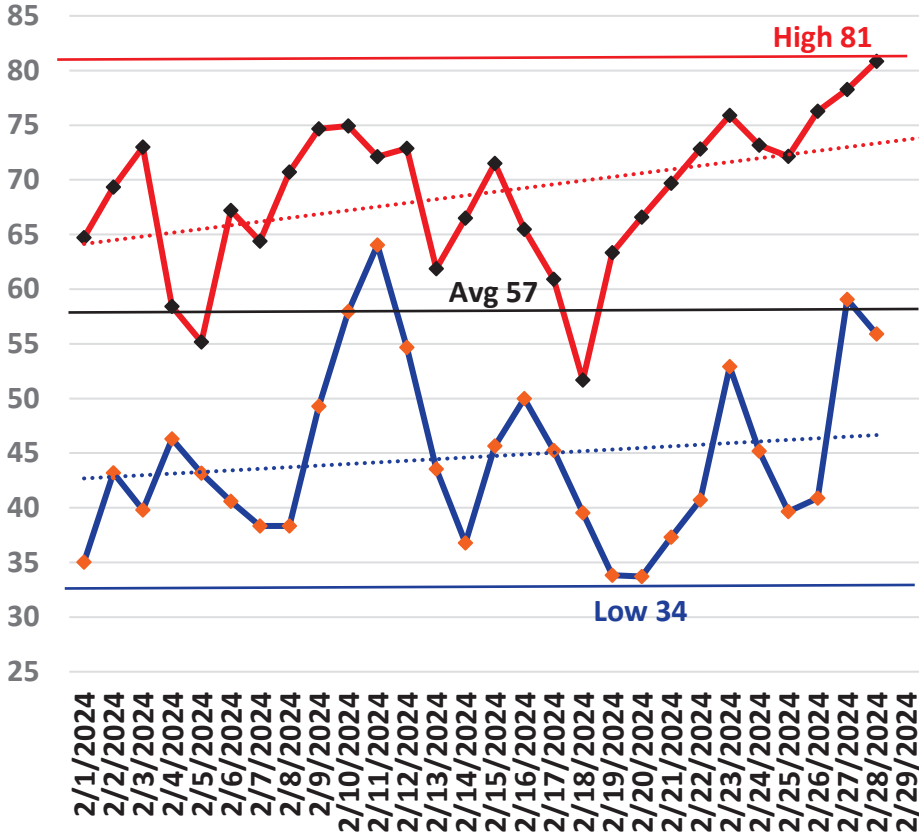
## January Avg Soil Temps Marianna



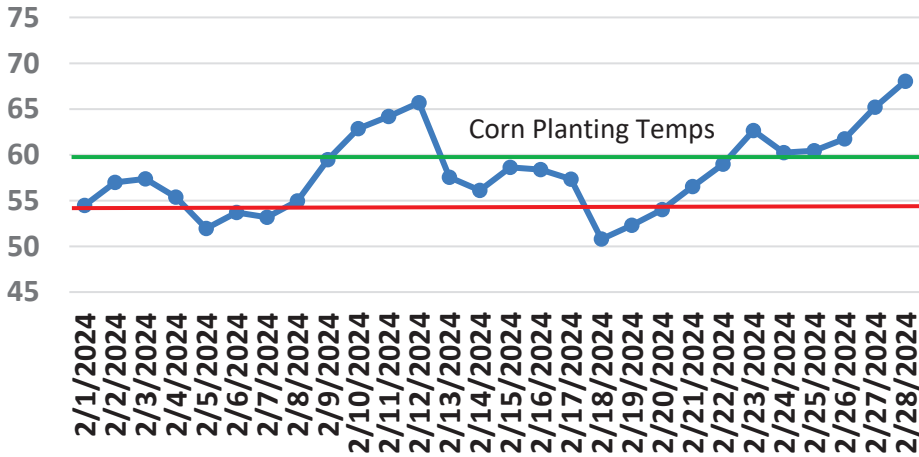
# February Daily Weather Data

Temperature							Precipitation		Wind				
	Air Temp 6 ft			Soil Temp 4 inch			Rain	Evapo Trans	Avg Wind	Min Wind	Max Wind		
Date	Avg	Min	Max	Avg	Min	Max	Inches	Inches	mph	mph	mph		
2/1/2024	50	35	65	54	47	63	0.00	0.06	2.3	0.0	11.3		
2/2/2024	54	43	69	57	51	66	0.00	0.07	2.5	0.0	12.4		
2/3/2024	56	40	73	57	50	66	0.00	0.07	3.6	0.0	17.3		
2/4/2024	52	46	58	55	51	58	1.37	0.05	7.1	0.0	45.5		
2/5/2024	49	43	55	52	49	55	0.00	0.05	5.6	0.0	21.8		
2/6/2024	53	41	67	54	47	62	0.00	0.07	3.9	0.0	15.7		
2/7/2024	50	38	64	53	46	62	0.00	0.07	2.2	0.0	14.6		
2/8/2024	55	38	71	55	47	64	0.00	0.08	3.5	0.0	14.8		
2/9/2024	62	49	75	59	53	67	0.00	0.08	4.3	0.0	16.2		
2/10/2024	66	58	75	63	59	68	0.00	0.08	6.5	0.3	20.5		
2/11/2024	68	64	72	64	62	67	0.65	0.05	4.9	0.0	19.4		
2/12/2024	67	55	73	66	61	69	1.28	0.07	7.8	0.1	36.4		
2/13/2024	53	44	62	58	53	63	0.02	0.08	8.6	0.4	28.0		
2/14/2024	51	37	67	56	48	65	0.00	0.08	2.2	0.0	10.8		
2/15/2024	57	46	72	59	52	67	0.00	0.08	2.5	0.0	11.9		
2/16/2024	57	50	65	58	55	62	0.01	0.06	2.8	0.0	11.3		
2/17/2024	54	45	61	57	52	61	0.20	0.06	5.3	0.0	23.2		
2/18/2024	45	40	52	51	48	54	0.00	0.05	5.8	0.1	16.2		
2/19/2024	48	34	63	52	45	62	0.00	0.08	3.2	0.0	15.9		
2/20/2024	50	34	67	54	45	65	0.00	0.08	2.4	0.0	13.0		
2/21/2024	54	37	70	57	48	67	0.00	0.08	2.3	0.0	12.8		
2/22/2024	58	41	73	59	51	69	0.00	0.09	6.3	0.0	28.2		
2/23/2024	65	53	76	63	58	69	0.09	0.10	9.4	0.4	29.8		
2/24/2024	60	45	73	60	53	69	0.00	0.10	9.1	0.2	38.8		
2/25/2024	56	40	72	60	52	71	0.00	0.09	2.2	0.0	11.3		
2/26/2024	60	41	76	62	53	72	0.00	0.10	4.9	0.0	18.9		
2/27/2024	68	59	78	65	60	73	0.00	0.10	8.8	0.9	29.6		
2/28/2024	70	56	81	68	64	74	0.00	0.10	10.3	0.2	31.0		
2/29/2024	57	49	62	64	59	68	0.00	0.07	6.4	0.0	20.2		
<b>High</b>			<b>81</b>			<b>74</b>		<b>High</b>			<b>45.5</b>		
<b>Low</b>		<b>34</b>			<b>45</b>			<b>Low</b>	<b>0.0</b>				
<b>Average</b>	<b>57</b>	45	69	<b>58</b>	52	65		<b>Average</b>	<b>5.1</b>				
Days over 95 <sup>u</sup> 0				<b>Total for Month</b>			<b>3.62</b>	<b>2.20</b>	<b>Cumulative for Year</b>				
				<b># of Rain Days</b>			7			<b>Rain</b>	9.3		
				<b>Historic Average</b>			5.04			<b>Avg</b>	9.9		
				<b>Deviation from Avg</b>			-1.42			<b>Dev</b>	-0.7		
Days below 32 <sup>u</sup> 0				<b>Net Gain/loss (Rain - ET)</b>			<b>1.42</b>		<b>Net</b>	5.5			

## February Marianna FAWN 6' Air Temps



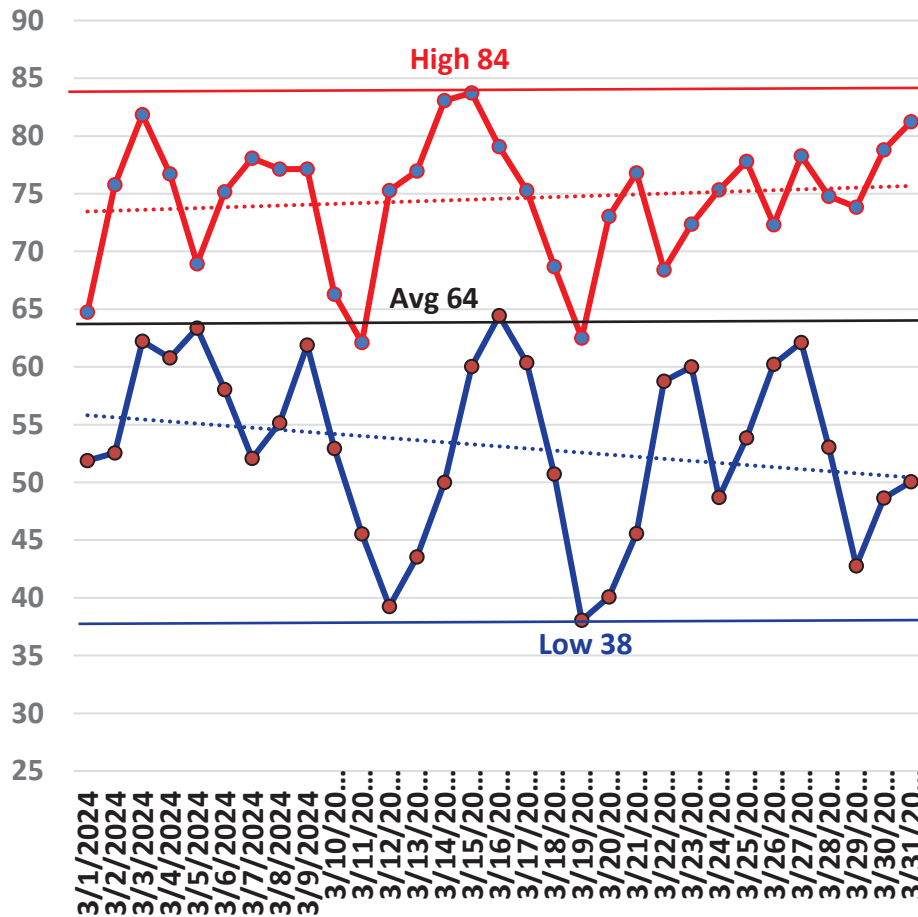
## February Avg Soil Temps Marianna



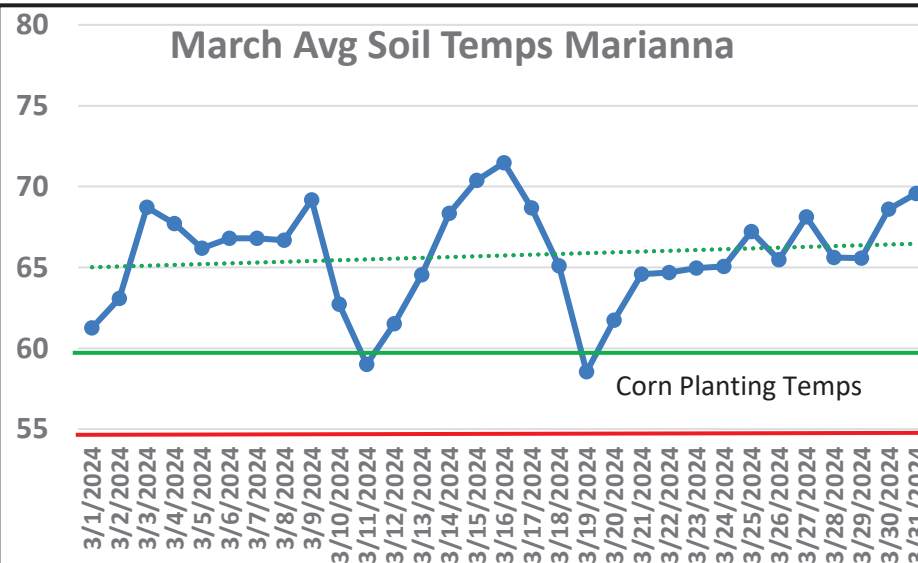
# March Daily Weather Data

Date	Temperature						Precipitation		Wind			
	Air Temp 6 ft			Soil Temp 4 inch			Rain	Evapo Trans	Avg Wind	Min Wind	Max Wind	
	Avg	Min	Max	Avg	Min	Max	Inches	Inches	mph	mph	mph	
3/1/2024	58	52	65	61	59	64	0.59	0.06	4.5	0.0	20.3	
3/2/2024	62	53	76	63	58	69	0.00	0.08	2.7	0.0	14.9	
3/3/2024	69	62	82	69	63	77	0.00	0.12	3.3	0.0	14.0	
3/4/2024	67	61	77	68	65	73	0.00	0.08	4.5	0.0	16.0	
3/5/2024	66	63	69	66	65	68	0.24	0.05	6.9	0.1	42.8	
3/6/2024	67	58	75	67	64	70	0.00	0.09	5.6	0.0	21.9	
3/7/2024	65	52	78	67	59	76	0.00	0.11	2.6	0.0	13.2	
3/8/2024	67	55	77	67	62	72	0.42	0.09	7.3	0.0	26.4	
3/9/2024	70	62	77	69	65	75	1.47	0.09	9.4	0.3	30.5	
3/10/2024	59	53	66	63	58	68	0.00	0.11	9.0	0.5	25.2	
3/11/2024	54	46	62	59	54	65	0.00	0.08	3.7	0.0	14.1	
3/12/2024	58	39	75	62	52	73	0.00	0.10	2.1	0.0	8.8	
3/13/2024	61	44	77	65	56	75	0.00	0.10	2.3	0.0	12.4	
3/14/2024	67	50	83	68	59	80	0.00	0.12	3.1	0.1	12.2	
3/15/2024	70	60	84	70	65	78	0.47	0.11	4.9	0.0	24.6	
3/16/2024	70	64	79	71	66	79	0.01	0.13	3.9	0.0	13.1	
3/17/2024	66	60	75	69	65	74	0.66	0.09	3.5	0.1	31.0	
3/18/2024	61	51	69	65	57	70	0.00	0.10	9.4	0.5	31.0	
3/19/2024	50	38	63	59	50	69	0.00	0.10	5.0	0.0	20.9	
3/20/2024	57	40	73	62	52	74	0.00	0.11	3.7	0.0	15.8	
3/21/2024	62	46	77	65	56	74	0.00	0.11	2.8	0.0	18.8	
3/22/2024	64	59	68	65	62	67	0.07	0.06	5.0	0.1	28.9	
3/23/2024	65	60	72	65	61	69	0.12	0.10	8.8	0.2	28.1	
3/24/2024	63	49	75	65	56	76	0.00	0.12	5.1	0.0	33.2	
3/25/2024	66	54	78	67	60	75	0.00	N/A	11.7	0.1	30.8	
3/26/2024	64	60	72	65	64	68	0.65	0.06	8.7	0.1	35.7	
3/27/2024	69	62	78	68	64	76	0.00	0.12	5.6	0.0	17.8	
3/28/2024	64	53	75	66	59	74	0.00	0.14	8.6	0.3	25.2	
3/29/2024	60	43	74	66	55	78	0.00	0.12	2.9	0.0	12.1	
3/30/2024	64	49	79	69	59	81	0.00	0.13	3.2	0.0	22.0	
3/31/2024	66	50	81	70	61	79	0	0.12	5.0	0.0	18.4	
<b>High</b>			<b>84</b>			<b>81</b>					<b>42.8</b>	
<b>Low</b>		<b>38</b>			<b>50</b>					<b>0.0</b>		
<b>Average</b>	<b>64</b>	<b>53</b>	<b>75</b>	<b>66</b>	<b>60</b>	<b>73</b>			<b>5.3</b>			
Days over 95 <sup>o</sup>	0			<b>Total for Month</b>			<b>4.70</b>	<b>3.00</b>	<b>Cumulative for Year</b>			
				<b># of Rain Days</b>			<b>10</b>		<b>Rain</b>	<b>14.0</b>		
				<b>Historic Average</b>			<b>5.38</b>		<b>Avg</b>	<b>15.3</b>		
Days below 32 <sup>o</sup>	0			<b>Deviation from Avg</b>			<b>-0.68</b>		<b>Dev</b>	<b>-1.4</b>		
				<b>Net Gain/loss (Rain - ET)</b>			<b>1.70</b>		<b>Net</b>	<b>5.5</b>		

## March Marianna FAWN 6' Air Temps



## March Avg Soil Temps Marianna

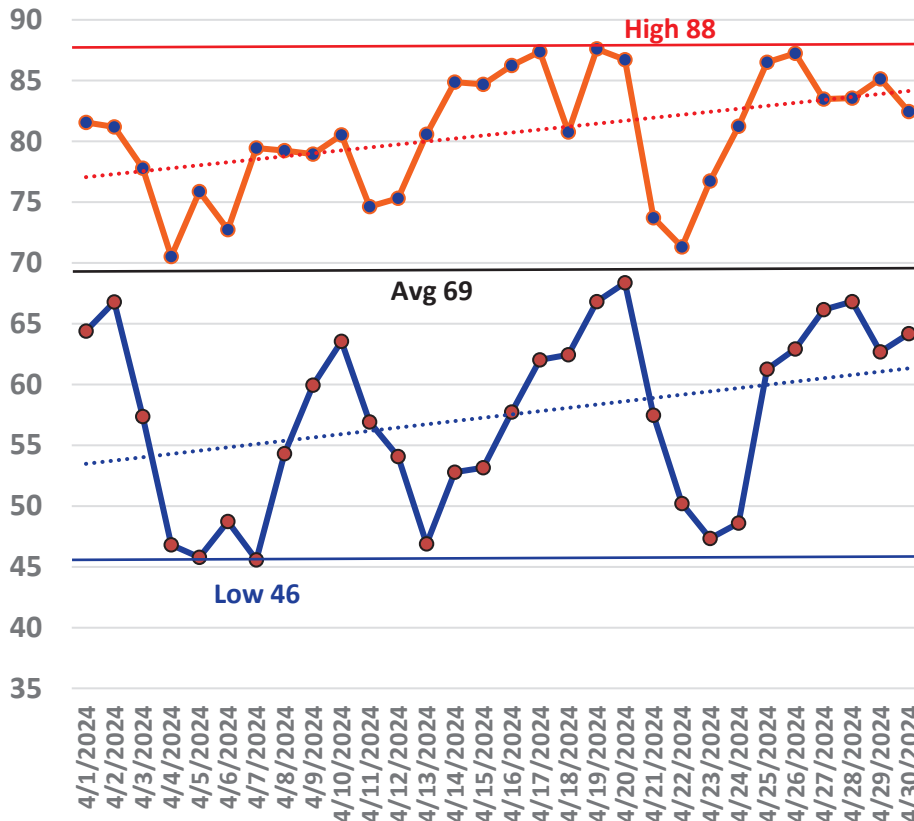




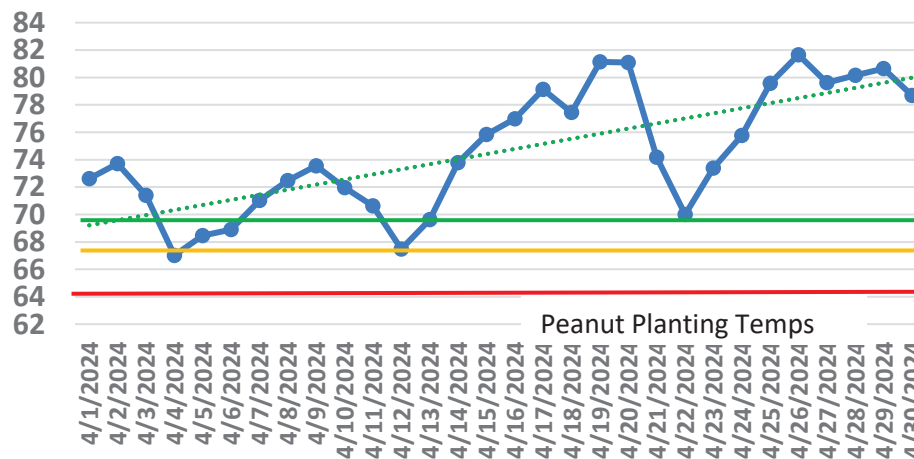
# April Daily Weather Data

Date	Temperature						Precipitation		Wind		
	Air Temp 6 ft			Soil Temp 4 inch			Rain	Evapo Trans	Avg Wind	Min Wind	Max Wind
	Avg	Min	Max	Avg	Min	Max	Inches	Inches	mph	mph	mph
4/1/2024	72	64	82	73	67	81	0.00	0.13	5.2	0.1	17.8
4/2/2024	74	67	81	74	69	79	0.05	0.11	7.7	0.2	25.7
4/3/2024	68	57	78	71	65	76	0.06	0.12	11.0	0.3	33.9
4/4/2024	59	47	71	67	58	78	0.00	0.14	8.4	0.3	26.5
4/5/2024	61	46	76	68	59	80	0.00	0.14	5.2	0.1	23.9
4/6/2024	59	49	73	69	59	80	0.00	0.14	4.0	0.0	17.5
4/7/2024	64	46	79	71	61	83	0.00	0.14	2.7	0.0	14.1
4/8/2024	67	54	79	72	64	81	0.00	0.13	6.3	0.0	19.4
4/9/2024	69	60	79	74	67	81	0.00	0.13	6.8	0.0	23.2
4/10/2024	70	64	81	72	69	79	3.12	0.10	9.3	0.0	42.6
4/11/2024	69	57	75	71	64	76	0.20	0.13	11.8	0.4	40.3
4/12/2024	63	54	75	67	59	78	0.00	0.16	8.1	0.1	27.9
4/13/2024	64	47	81	70	58	83	0.00	0.15	3.6	0.1	17.1
4/14/2024	69	53	85	74	63	88	0.00	0.16	3.6	0.1	17.2
4/15/2024	69	53	85	76	65	89	0.00	0.16	3.1	0.0	15.8
4/16/2024	71	58	86	77	69	89	0.00	0.15	3.7	0.0	17.0
4/17/2024	74	62	87	79	70	91	0.02	N/A	4.3	0.0	17.6
4/18/2024	72	62	81	77	72	84	0.00	N/A	3.6	0.0	16.8
4/19/2024	76	67	88	81	73	93	0.00	N/A	3.9	0.1	14.9
4/20/2024	75	68	87	81	75	91	0.00	N/A	4.0	0.0	14.7
4/21/2024	66	57	74	74	67	79	0.13	N/A	6.0	0.1	27.6
4/22/2024	60	50	71	70	60	83	0.03	0.15	6.2	0.0	20.1
4/23/2024	63	47	77	73	62	87	0.00	0.15	3.7	0.0	17.6
4/24/2024	67	49	81	76	65	89	0.00	0.16	2.7	0.0	13.6
4/25/2024	74	61	87	80	71	91	0.00	0.17	3.4	0.0	15.6
4/26/2024	75	63	87	82	73	93	0.00	0.17	4.2	0.0	17.7
4/27/2024	74	66	83	80	74	87	0.00	0.14	8.9	0.1	22.4
4/28/2024	74	67	84	80	73	90	0.00	0.18	8.9	0.1	24.6
4/29/2024	74	63	85	81	72	91	0.00	0.17	6.9	0.1	18.1
4/30/2024	72	64	82	79	74	85	0	0.12	5.0	0.0	26.2
<b>High</b>			<b>88</b>			<b>93</b>					<b>42.6</b>
<b>Low</b>		<b>46</b>			<b>58</b>					<b>0.0</b>	
<b>Average</b>	<b>69</b>	<b>57</b>	<b>81</b>	<b>75</b>	<b>67</b>	<b>85</b>			<b>5.7</b>		
Days over 95 <sup>u</sup>	0		<b>Total for Month</b>			<b>3.61</b>	3.60	<b>Cumulative for Year</b>			
			<b># of Rain Days</b>			7		<b>Rain</b>	17.6		
Days below 32 <sup>u</sup>	0		<b>Historic Average</b>			4.40		<b>Avg</b>	19.7		
			<b>Deviation from Avg</b>			-0.79		<b>Dev</b>	-2.2		
			<b>Net Gain/loss (Rain - ET)</b>			<b>0.01</b>		<b>Net</b>	5.5		

## April Marianna FAWN 6' Air Temps



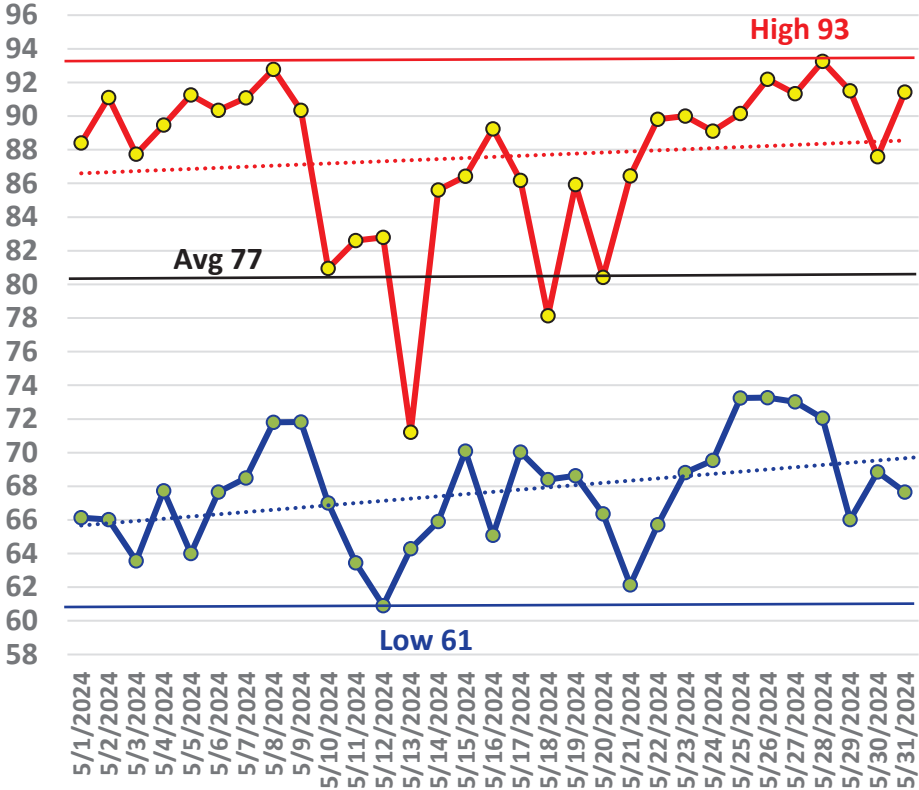
## April Avg Soil Temps Marianna



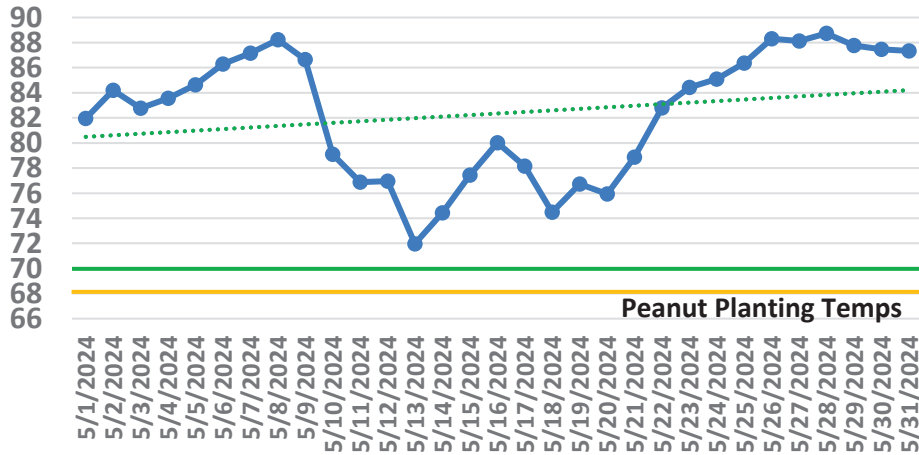
# May Daily Weather Data

Date	Temperature						Precipitation		Wind		
	Air Temp 6 ft			Soil Temp 4 inch			Rain	Evapo Trans	Avg Wind	Min Wind	Max Wind
	Avg	Min	Max	Avg	Min	Max	Inches	Inches	mph	mph	mph
5/1/2024	75	66	88	82	74	93	0.00	0.17	2.6	0.0	11.7
5/2/2024	77	66	91	84	76	96	0.00	0.19	4.2	0.0	18.6
5/3/2024	76	64	88	83	77	91	0.00	0.13	3.5	0.0	15.0
5/4/2024	77	68	89	84	77	94	0.04	0.18	4.8	0.0	21.1
5/5/2024	77	64	91	85	74	98	0.00	0.20	3.3	0.0	23.2
5/6/2024	78	68	90	86	79	96	0.00	0.18	4.1	0.0	19.2
5/7/2024	78	69	91	87	79	98	0.00	0.20	4.7	0.1	20.1
5/8/2024	80	72	93	88	81	98	0.00	0.20	5.8	0.1	22.0
5/9/2024	79	72	90	87	82	95	0.00	0.15	7.0	0.1	25.7
5/10/2024	73	67	81	79	75	82	1.30	0.11	6.3	0.1	26.5
5/11/2024	73	63	83	77	70	85	0.00	0.19	5.0	0.1	16.0
5/12/2024	72	61	83	77	70	87	0.00	0.14	2.7	0.0	13.4
5/13/2024	67	64	71	72	69	77	2.39	0.05	5.1	0.0	37.2
5/14/2024	74	66	86	74	69	83	1.30	0.15	6.3	0.0	39.7
5/15/2024	78	70	86	77	72	85	0.00	0.19	6.2	0.0	21.7
5/16/2024	77	65	89	80	71	92	0.00	0.20	3.1	0.0	15.6
5/17/2024	75	70	86	78	75	82	2.55	0.11	5.5	0.1	25.7
5/18/2024	73	68	78	74	73	76	1.51	0.07	5.1	0.0	34.7
5/19/2024	76	69	86	77	71	84	0.00	0.20	5.3	0.0	17.0
5/20/2024	72	66	80	76	72	82	0.00	0.12	2.2	0.0	16.1
5/21/2024	75	62	86	79	69	91	0.00	0.19	2.4	0.0	17.8
5/22/2024	78	66	90	83	73	95	0.00	0.20	3.4	0.0	14.9
5/23/2024	80	69	90	84	77	94	0.00	0.17	3.9	0.1	15.1
5/24/2024	79	70	89	85	78	95	0.00	0.19	4.7	0.0	17.4
5/25/2024	81	73	90	86	80	96	0.00	0.18	3.8	0.0	15.8
5/26/2024	82	73	92	88	80	99	0.00	0.22	5.0	0.1	19.6
5/27/2024	82	73	91	88	81	97	0.01	0.18	5.7	0.1	25.1
5/28/2024	82	72	93	89	81	100	0.01	0.23	4.5	0.1	18.1
5/29/2024	79	66	92	88	79	99	0.00	0.20	3.7	0.0	13.6
5/30/2024	78	69	88	87	81	97	0.00	0.17	2.8	0.0	13.7
5/31/2024	79	68	91	87	80	97	0	0.20	5.4	0.0	24.0
<b>High</b>			<b>93</b>			<b>100</b>					<b>39.7</b>
<b>Low</b>		<b>61</b>			<b>69</b>					<b>0.0</b>	
<b>Average</b>	<b>77</b>	<b>68</b>	<b>88</b>	<b>82</b>	<b>76</b>	<b>91</b>			<b>4.4</b>		
Days over 95 <sup>u</sup> 0 Days of 100 <sup>u</sup> 0 Days below 32 <sup>u</sup> 0				<b>Total for Month</b>		<b>9.11</b>	5.26	<b>Cumulative for Year</b>			
				<b># of Rain Days</b>		8		<b>Rain</b>	26.7		
				<b>Historic Average</b>		3.59		<b>Avg</b>	23.3		
				<b>Deviation from Avg</b>		5.52		<b>Dev</b>	3.3		
				<b>Net Gain/loss (Rain - ET)</b>			<b>3.85</b>	<b>Net</b>	5.5		

## May Marianna FAWN 6' Air Temps



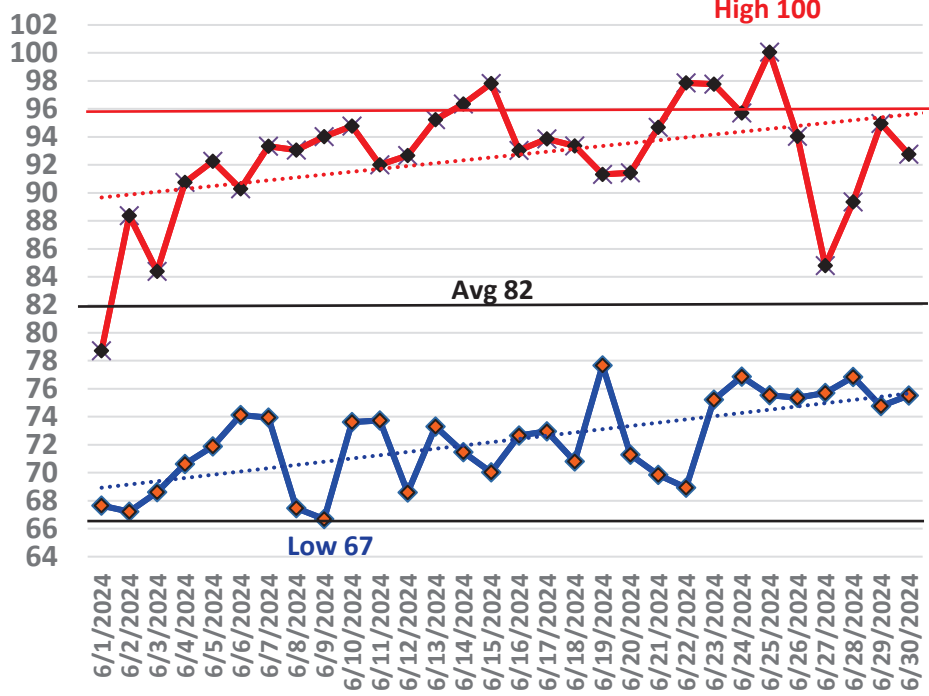
## May Avg Soil Temps Marianna



# June Daily Weather Data

Date	Temperature						Precipitation		Wind		
	Air Temp 6 ft			Soil Temp 4 inch			Rain	Evapo Trans	Avg Wind	Min Wind	Max Wind
	Avg	Min	Max	Avg	Min	Max	Inches	Inches	mph	mph	mph
6/1/2024	73	68	79	80	76	86	0.41	0.08	6.7	0.0	27.9
6/2/2024	75	67	88	80	74	91	0.07	0.18	4.1	0.0	30.4
6/3/2024	76	69	84	80	75	87	0.04	0.15	3.5	0.0	17.2
6/4/2024	80	71	91	84	76	95	0.00	0.20	4.3	0.0	19.4
6/5/2024	82	72	92	86	78	97	0.00	0.20	5.7	0.1	20.5
6/6/2024	81	74	90	86	80	92	0.01	0.18	4.4	0.0	20.5
6/7/2024	84	74	93	89	81	101	0.00	0.23	5.3	0.4	16.8
6/8/2024	81	67	93	90	80	102	0.00	0.23	2.9	0.0	13.1
6/9/2024	81	67	94	91	81	103	0.00	0.22	3.8	0.1	14.1
6/10/2024	83	74	95	92	85	103	0.00	0.20	4.8	0.0	16.6
6/11/2024	82	74	92	92	84	101	0.00	0.21	3.4	0.0	15.1
6/12/2024	82	69	93	91	83	100	0.00	0.19	3.4	0.0	14.7
6/13/2024	85	73	95	93	85	105	0.00	0.23	2.7	0.0	17.6
6/14/2024	83	71	96	94	85	105	0.00	N/A	2.8	0.0	18.9
6/15/2024	85	70	98	94	85	105	0.00	0.23	3.1	0.0	17.5
6/16/2024	82	73	93	92	87	97	0.02	0.15	4.7	0.0	33.1
6/17/2024	82	73	94	90	84	99	0.00	0.20	5.8	0.0	23.4
6/18/2024	82	71	93	91	84	101	0.00	0.21	5.2	0.1	26.8
6/19/2024	83	78	91	91	86	97	0.00	0.16	5.9	0.1	24.4
6/20/2024	81	71	91	89	84	96	0.02	0.16	3.2	0.0	19.8
6/21/2024	82	70	95	91	82	103	0.00	0.23	3.0	0.0	19.0
6/22/2024	85	69	98	94	84	105	0.00	0.23	3.4	0.0	16.3
6/23/2024	86	75	98	95	87	106	0.00	N/A	4.6	0.1	19.2
6/24/2024	84	77	96	94	88	103	0.00	0.19	4.7	0.1	23.1
6/25/2024	86	76	100	93	87	101	0.00	0.20	4.5	0.1	17.3
6/26/2024	83	75	94	90	85	97	0.37	0.16	5.5	0.1	35.3
6/27/2024	80	76	85	84	82	88	0.22	0.10	4.2	0.1	14.3
6/28/2024	82	77	89	85	81	93	0.32	0.17	4.4	0.0	16.6
6/29/2024	82	75	95	86	81	96	1.05	0.21	4.7	0.1	38.6
6/30/2024	82	76	93	85	80	95	0.09	0.19	4.2	0.1	18.3
<b>High</b>			<b>100</b>			<b>106</b>					<b>38.6</b>
<b>Low</b>		<b>67</b>			<b>74</b>					<b>0.0</b>	
<b>Average</b>	<b>82</b>	72	93	<b>89</b>	82	98			<b>4.3</b>		
Days over 95 <sup>u</sup>				7		<b>Total for Month</b>		<b>2.62</b>	5.29	<b>Cumulative for Year</b>	
Days of 100 <sup>u</sup>				1		<b># of Rain Days</b>		11		<b>Rain</b>	29.3
Days below 32 <sup>u</sup>				0		<b>Historic Average</b>		4.92		<b>Avg</b>	28.2
						<b>Deviation from Avg</b>		-2.30		<b>Dev</b>	1.0
						<b>Net Gain/loss (Rain - ET)</b>		-2.67		<b>Net</b>	5.5

# June Marianna FAWN 6' Air Temps

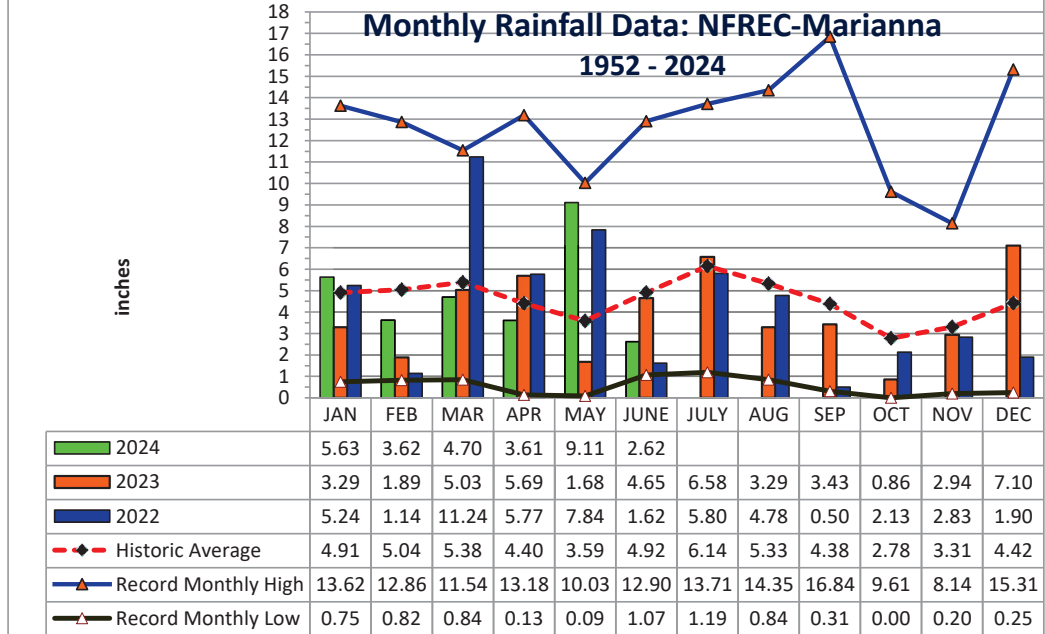




YEAR	JAN	FEB	MAR	APR	MAY	JUNE	JULY	AUG	SEP	OCT	NOV	DEC	TOTAL
1952	1.14	8.88	4.48	2.11	5.13	1.12	5.95	8.81	3.09	0.65	3.26	3.42	48.04
1953	4.84	7.26	3.03	8.43	2.43	3.97	6.84	1.63	6.33	0.65	4.09	15.31	64.81
1954	1.33	3.49	2.62	2.58	1.96	3.46	3.28	2.84	1.72	1.30	2.66	1.44	28.68
1955	3.66	1.83	0.84	5.80	3.03	1.62	6.75	3.75	2.44	2.10	0.72	0.77	33.31
1956	3.59	5.18	3.77	2.04	4.03	5.45	8.52	4.09	6.44	5.08	0.28	3.34	51.81
1957	0.75	2.65	5.17	5.74	4.60	5.75	9.83	5.91	16.84	1.31	6.24	2.22	67.01
1958	4.48	3.61	4.73	7.22	5.57	6.00	8.39	3.45	3.68	1.88	1.75	2.32	53.08
1959	3.67	7.06	8.50	5.73	6.95	3.77	4.83	3.67	3.07	7.93	0.21	1.53	56.92
1960	3.36	7.08	3.41	6.80	3.20	4.75	4.97	4.80	6.22	2.00	0.47	2.35	49.41
1961	4.23	4.15	3.64	5.57	3.97	4.41	3.99	11.09	2.60	0.00	2.84	6.23	52.72
1962	1.72	2.80	8.13	3.28	2.86	3.67	7.97	6.07	3.07	2.82	5.16	1.67	49.22
1963	7.31	3.02	3.18	1.36	3.50	7.99	5.16	1.50	5.25	0.01	4.22	6.05	48.55
1964	10.80	6.81	6.41	9.47	2.23	5.68	9.22	3.07	7.47	9.61	3.35	6.44	80.56
1965	2.63	6.09	5.51	3.96	0.18	9.60	3.26	4.18	4.48	3.41	1.81	3.60	48.71
1966	5.56	9.84	2.57	0.77	5.80	3.13	3.25	9.82	5.09	1.41	2.03	4.62	53.89
1967	8.27	3.32	2.19	0.13	2.61	7.02	6.49	3.58	1.40	1.86	2.40	7.98	47.25
1968	1.28	2.30	3.40	2.50	3.39	1.18	5.45	4.61	2.99	1.41	5.11	5.34	38.96
1969	1.68	3.49	7.08	4.54	3.01	1.71	13.18	3.05	5.64	1.50	1.22	3.80	49.90
1970	4.16	9.20	8.86	1.83	1.81	3.69	5.04	8.01	0.49	4.40	2.21	3.13	52.83
1971	1.97	6.11	7.15	3.17	3.03	3.85	5.20	6.76	2.47	1.84	1.94	3.70	47.19
1972	3.62	6.03	6.41	0.38	2.87	8.89	3.78	5.39	2.14	2.44	3.29	3.77	49.01
1973	8.14	7.71	8.38	7.60	6.87	3.63	11.12	4.51	5.40	0.27	3.64	5.33	72.60
1974	5.24	5.80	2.66	3.40	3.78	1.56	3.29	8.01	4.68	0.84	2.14	2.89	44.29
1975	10.21	6.36	4.91	10.35	3.97	4.10	13.71	5.40	3.81	4.35	2.89	3.28	73.34
1976	6.99	1.50	4.89	1.87	8.89	3.08	3.03	3.47	5.47	6.18	5.72	3.97	55.06
1977	3.47	1.81	6.52	0.88	0.60	6.36	3.55	5.22	9.83	2.59	8.14	4.19	53.16
1978	7.28	3.28	7.25	4.65	6.73	3.79	7.25	4.90	0.98	0.20	6.01	3.65	55.97
1979	7.30	7.78	3.26	7.75	6.22	1.31	7.49	6.30	11.51	0.53	4.47	2.84	66.76
1980	6.58	2.96	11.54	9.29	4.50	3.50	5.87	2.53	4.56	4.71	1.52	0.25	57.81
1981	1.70	5.32	5.94	3.03	2.73	4.74	4.02	2.53	2.44	1.75	0.85	4.94	39.99
1982	4.17	5.61	2.91	5.93	5.39	3.00	7.51	4.42	6.00	2.65	2.34	9.14	59.07
1983	4.92	6.84	8.53	7.88	2.27	5.66	1.19	2.53	8.97	3.52	5.90	7.65	65.86
1984	5.49	5.01	8.62	6.29	2.50	5.31	12.01	5.76	0.32	1.60	1.63	0.80	55.34
1985	4.60	4.46	2.60	1.18	4.44	5.68	3.68	5.58	1.42	7.42	7.91	5.34	54.31
1986	5.68	10.27	3.21	0.83	2.26	1.85	2.75	4.12	2.35	2.22	4.40	5.68	45.62
1987	8.62	5.52	7.23	0.40	4.46	5.43	5.51	4.18	2.27	0.06	4.02	0.81	48.51
1988	5.57	6.40	8.41	2.69	0.28	1.07	5.43	3.98	5.53	1.98	3.28	1.23	45.85
1989	1.59	2.74	4.96	3.63	7.01	12.90	11.19	3.06	3.36	7.20	4.71	5.45	67.80
1990	5.26	4.57	4.55	3.00	3.22	4.02	3.65	2.91	0.85	1.34	0.93	3.42	37.72
1991	13.62	3.44	9.00	5.32	10.03	5.30	10.67	3.89	1.53	1.17	1.60	3.00	68.57
1992	8.37	6.29	7.92	2.50	1.41	11.16	8.69	6.72	3.19	2.08	7.40	2.93	68.66
1993	12.00	3.38	7.41	1.50	1.60	4.18	6.68	3.89	3.44	2.90	2.27	3.63	52.88
1994	8.64	2.53	6.25	4.34	1.82	11.41	10.95	9.08	6.44	7.62	2.53	3.79	75.40
1995	5.23	3.13	4.29	4.35	3.90	5.56	3.02	6.16	0.86	7.51	4.12	1.78	49.91
1996	3.64	5.99	8.47	5.76	1.50	5.43	2.83	14.28	5.32	3.81	2.01	3.65	62.69
1997	6.68	5.29	2.63	10.08	5.91	6.41	5.73	4.65	3.78	2.10	6.85	8.44	68.55
1998	6.28	8.30	6.11	2.24	1.45	2.35	4.37	2.20	16.31	0.30	2.05	1.98	53.94
1999	6.95	2.90	3.61	1.50	6.71	8.99	8.64	4.02	4.33	3.13	3.56	2.50	56.84

YEAR	JAN	FEB	MAR	APR	MAY	JUNE	JULY	AUG	SEP	OCT	NOV	DEC	TOTAL
2000	3.78	4.96	4.48	4.05	0.09	4.00	3.40	7.15	7.20	0.71	4.43	3.21	47.46
2001	2.16	0.82	10.00	1.99	2.52	8.24	4.66	8.21	1.90	1.51	1.70	0.78	44.49
2002	3.82	2.44	5.51	5.78	2.19	3.45	10.34	3.30	11.83	7.36	7.76	5.99	69.77
2003	2.30	7.03	8.18	4.89	3.11	6.11	7.84	5.99	2.39	3.58	3.04	3.12	57.58
2004	3.19	7.66	0.90	4.37	1.19	6.66	4.92	1.67	10.01	3.89	4.97	3.25	52.68
2005	3.33	2.31	9.05	7.04	1.67	7.47	9.44	11.71	1.62	0.03	3.15	4.81	61.63
2006	4.82	3.90	0.91	1.61	4.97	1.99	2.22	5.18	0.91	3.09	3.41	5.43	38.44
2007	5.99	2.45	1.10	0.99	1.57	3.97	3.94	4.18	1.27	4.79	1.89	4.03	36.17
2008	4.26	9.00	9.11	4.28	1.46	8.64	4.02	9.29	0.74	5.11	3.18	8.23	67.32
2009	2.33	3.26	7.11	7.73	9.17	2.78	3.88	3.19	5.22	3.39	2.35	9.57	59.98
2010	7.53	3.99	3.41	4.01	5.09	2.92	2.31	0.84	1.33	0.22	5.82	0.63	38.10
2011	4.33	4.04	5.00	0.92	0.78	1.66	5.11	1.87	2.26	1.84	1.94	3.75	33.50
2012	3.79	7.49	5.94	3.17	1.42	7.35	5.05	14.35	5.17	1.75	1.30	4.10	60.88
2013	1.05	12.86	2.99	3.54	0.64	3.72	13.39	13.17	2.14	1.96	3.91	4.44	63.81
2014	2.15	4.99	7.70	13.18	4.03	2.32	5.69	2.55	6.03	2.03	5.93	5.32	61.92
2015	3.4	3.8	2.17	9.52	3.55	4.04	4.85	2.75	4.15	1.00	7.33	8.67	55.23
2016	4.8	3.51	8.15	4.94	1.74	3.49	2.79	7.28	4.19	0.22	0.8	12.33	54.24
2017	7.28	3.78	2.11	2.12	4.28	11.53	6.82	4.47	3.75	0.97	0.2	2.76	50.07
2018	4.26	10.50	5.38	3.72	5.06	7.97	5.99	5.67	2.67	5.66	6.94	11.86	75.68
2019	6.53	2.76	3.43	3.94	1.78	3.62	6.36	4.15	0.31	6.43	1.74	6.95	48.00
2020	4.06	6.42	2.02	4.42	2.16	5.31	4.00	8.81	13.44	3.19	1.95	4.53	60.31
2021	5.45	6.43	3.48	8.57	2.56	8.18	7.74	9.37	5.08	4.62	0.30	4.10	65.88
2022	5.24	1.14	11.24	5.77	7.84	1.62	5.80	4.78	0.50	2.13	2.83	1.90	50.79
2023	3.29	1.89	5.03	5.69	1.68	4.65	6.58	3.29	3.43	0.86	2.94	7.10	46.43
2024	5.63	3.62	4.70	3.61	9.11	2.62							29.29

Deviation from the Average Monthly Rainfall														
Inches	0.72	-1.42	-0.68	-0.79	5.52	-2.30								1.05
Monthly Average Rainfall, 1952-2023														
AVG.	4.91	5.04	5.38	4.40	3.59	4.92	6.14	5.33	4.38	2.78	3.31	4.42	54.57	
% of Annual Rainfall Occuring each Month														
	9.0%	9.2%	9.9%	8.1%	6.6%	9.0%	11.3%	9.8%	8.0%	5.1%	6.1%	8.1%		
Record High/Low for the Month														
LOW	0.75	0.82	0.84	0.13	0.09	1.07	1.19	0.84	0.31	0.00	0.20	0.25	28.68	
HIGH	13.62	12.86	11.54	13.18	10.03	12.90	13.71	14.35	16.84	9.61	8.14	15.31	80.56	





**Jackson County**  
**Monthly Cumulative Rainfall, 1952 - 2024**  
North Florida Research & Education Center Marianna, FL



**Wet**      **Dry**  
**Ranking** **Ranking**

YEAR	JAN	FEB	MAR	APR	MAY	JUNE	JULY	AUG	SEP	OCT	NOV	DEC	Wet Ranking	Dry Ranking
1952	1.14	10.02	14.50	16.61	21.74	22.86	28.81	37.62	40.71	41.36	44.62	48.04	54	18
1953	4.84	12.10	15.13	23.56	25.99	29.96	36.80	38.43	44.76	45.41	49.50	64.81	16	56
1954	1.33	4.82	7.44	10.02	11.98	15.44	18.72	21.56	23.28	24.58	27.24	28.68	71	1
1955	3.66	5.49	6.33	12.13	15.16	16.78	23.53	27.28	29.72	31.82	32.54	33.31	70	2
1956	3.59	8.77	12.54	14.58	18.61	24.06	32.58	36.67	43.11	48.19	48.47	51.81	43	29
1957	0.75	3.40	8.57	14.31	18.91	24.66	34.49	40.40	57.24	58.55	64.79	67.01	12	60
1958	4.48	8.09	12.82	20.04	25.61	31.61	40.00	43.45	47.13	49.01	50.76	53.08	38	34
1959	3.67	10.73	19.23	24.96	31.91	35.68	40.51	44.18	47.25	55.18	55.39	56.92	27	45
1960	3.36	10.44	13.85	20.65	23.85	28.60	33.57	38.37	44.59	46.59	47.06	49.41	48	24
1961	4.23	8.38	12.02	17.59	21.56	25.97	29.96	41.05	43.65	43.65	46.49	52.72	41	31
1962	1.72	4.52	12.65	15.93	18.79	22.46	30.43	36.50	39.57	42.39	47.55	49.22	49	23
1963	7.31	10.33	13.51	14.87	18.37	26.36	31.52	33.02	38.27	38.28	42.50	48.55	52	20
1964	10.80	17.61	24.02	33.49	35.72	41.40	50.62	53.69	61.16	70.77	74.12	80.56	1	71
1965	2.63	8.72	14.23	18.19	18.37	27.97	31.23	35.41	39.89	43.30	45.11	48.71	51	21
1966	5.56	15.40	17.97	18.74	24.54	27.67	30.92	40.74	45.83	47.24	49.27	53.89	36	36
1967	8.27	11.59	13.78	13.91	16.52	23.54	30.03	33.61	35.01	36.87	39.27	47.25	57	15
1968	1.28	3.58	6.98	9.48	12.87	14.05	19.50	24.11	27.10	28.51	33.62	38.96	64	8
1969	1.68	5.17	12.25	16.79	19.80	21.51	34.69	37.74	43.38	44.88	46.10	49.90	47	25
1970	4.16	13.36	22.22	24.05	25.86	29.55	34.59	42.60	43.09	47.49	49.70	52.83	40	32
1971	1.97	8.08	15.23	18.40	21.43	25.28	30.48	37.24	39.71	41.55	43.49	47.19	58	14
1972	3.62	9.65	16.06	16.44	19.31	28.20	31.98	37.37	39.51	41.95	45.24	49.01	50	22
1973	8.14	15.85	24.23	31.83	38.70	42.33	53.45	57.96	63.36	63.63	67.27	72.60	5	67
1974	5.24	11.04	13.70	17.10	20.88	22.44	25.73	33.74	38.42	39.26	41.40	44.29	62	10
1975	10.21	16.57	21.48	31.83	35.80	39.90	53.61	59.01	62.82	67.17	70.06	73.34	4	68
1976	6.99	8.49	13.38	15.25	24.14	27.22	30.25	33.72	39.19	45.37	51.09	55.06	32	40
1977	3.47	5.28	11.80	12.68	13.28	19.64	23.19	28.41	38.24	40.83	48.97	53.16	37	35
1978	7.28	10.56	17.81	22.46	29.19	32.98	40.23	45.13	46.11	46.31	52.32	55.97	29	43
1979	7.30	15.08	18.34	26.09	32.31	33.62	41.11	47.41	58.92	59.45	63.92	66.76	13	59
1980	6.58	9.54	21.08	30.37	34.87	38.37	44.24	46.77	51.33	56.04	57.56	57.81	25	47
1981	1.70	7.02	12.96	15.99	18.72	23.46	27.48	30.01	32.45	34.20	35.05	39.99	63	9
1982	4.17	9.78	12.69	18.62	24.01	27.01	34.52	38.94	44.94	47.59	49.93	59.07	24	48
1983	4.92	11.76	20.29	28.17	30.44	36.10	37.29	39.82	48.79	52.31	58.21	65.86	15	57
1984	5.49	10.50	19.12	25.41	27.91	33.22	45.23	50.99	51.31	52.91	54.54	55.34	30	42
1985	4.60	9.06	11.66	12.84	17.28	22.96	26.64	32.22	33.64	41.06	48.97	54.31	33	39
1986	5.68	15.95	19.16	19.99	22.25	24.10	26.85	30.97	33.32	35.54	39.94	45.62	60	12
1987	8.62	14.14	21.37	21.77	26.23	31.66	37.17	41.35	43.62	43.68	47.70	48.51	53	19
1988	5.57	11.97	20.38	23.07	23.35	24.42	29.85	33.83	39.36	41.34	44.62	45.85	59	13
1989	1.59	4.33	9.29	12.92	19.93	32.83	44.02	47.08	50.44	57.64	62.35	67.80	10	62
1990	5.26	9.83	14.38	17.38	20.60	24.62	28.27	31.18	32.03	33.37	34.30	37.72	67	5
1991	13.62	17.06	26.06	31.38	41.41	46.71	57.38	61.27	62.80	63.97	65.57	68.57	8	64
1992	8.37	14.66	22.58	25.08	26.49	37.65	46.34	53.06	56.25	58.33	65.73	68.66	7	65
1993	12.00	15.38	22.79	24.29	25.89	30.07	36.75	40.64	44.08	46.98	49.25	52.88	39	33
1994	8.64	11.17	17.42	21.76	23.58	34.99	45.94	55.02	61.46	69.08	71.61	75.40	3	69
1995	5.23	8.36	12.65	17.00	20.90	26.46	29.48	35.64	36.50	44.01	48.13	49.91	46	26
1996	3.64	9.63	18.10	23.86	25.36	30.79	33.62	47.90	53.22	57.03	59.04	62.69	18	54
1997	6.68	11.97	14.60	24.68	30.59	37.00	42.73	47.38	51.16	53.26	60.11	68.55	9	63
1998	6.28	14.58	20.69	22.93	24.38	26.73	31.10	33.30	49.61	49.91	51.96	53.94	35	37
1999	6.95	9.85	13.46	14.96	21.67	30.66	39.30	43.32	47.65	50.78	54.34	56.84	28	44

YEAR	JAN	FEB	MAR	APR	MAY	JUNE	JULY	AUG	SEP	OCT	NOV	DEC	Ranking	Ranking
2000	3.78	8.74	13.22	17.27	17.36	21.36	24.76	31.91	39.11	39.82	44.25	47.46	56	16
2001	2.16	2.98	12.98	14.97	17.49	25.73	30.39	38.60	40.50	42.01	43.71	44.49	61	11
2002	3.82	6.26	11.77	17.55	19.74	23.19	33.53	36.83	48.66	56.02	63.78	69.77	6	66
2003	2.30	9.33	17.51	22.40	25.51	31.62	39.46	45.45	47.84	51.42	54.46	57.58	26	46
2004	3.19	10.85	11.75	16.12	17.31	23.97	28.89	30.56	40.57	44.46	49.43	52.68	42	30
2005	3.33	5.64	14.69	21.73	23.40	30.87	40.31	52.02	53.64	53.67	56.82	61.63	20	52
2006	4.82	8.72	9.63	11.24	16.21	18.20	20.42	25.60	26.51	29.60	33.01	38.44	65	7
2007	5.99	8.44	9.54	10.53	12.10	16.07	20.01	24.19	25.46	30.25	32.14	36.17	68	4
2008	4.26	13.26	22.37	26.65	28.11	36.75	40.77	50.06	50.80	55.91	59.09	67.32	11	61
2009	2.33	5.59	12.70	20.43	29.60	32.38	36.26	39.45	44.67	48.06	50.41	59.98	23	49
2010	7.53	11.52	14.93	18.94	24.03	26.95	29.26	30.10	31.43	31.65	37.47	38.10	66	6
2011	4.33	8.37	13.37	14.29	15.07	16.73	21.84	23.71	25.97	27.81	29.75	33.50	69	3
2012	3.79	11.28	17.22	20.39	21.81	29.16	34.21	48.56	53.73	55.48	56.78	60.88	21	51
2013	1.05	13.91	16.90	20.44	21.08	24.80	38.19	51.36	53.50	55.46	59.37	63.81	17	55
2014	2.15	7.14	14.84	28.02	32.05	34.37	40.06	42.61	48.64	50.67	56.60	61.92	19	53
2015	3.40	7.20	9.37	18.89	22.44	26.48	31.33	34.08	38.23	39.23	46.56	55.23	31	41
2016	4.80	8.31	16.46	21.40	23.14	26.63	29.42	36.70	40.89	41.11	41.91	54.24	34	38
2017	7.28	11.06	13.17	15.29	19.57	31.10	37.92	42.39	46.14	47.11	47.31	50.07	45	27
2018	4.26	14.76	20.14	23.86	28.92	36.89	42.88	48.55	51.22	56.88	63.82	75.68	2	70
2019	6.53	9.29	12.72	16.66	18.44	22.06	28.42	32.57	32.88	39.31	41.05	48.00	55	17
2020	4.06	10.48	12.50	16.92	19.08	24.39	28.39	37.20	50.64	53.83	55.78	60.31	22	50
2021	5.45	11.88	15.36	23.93	26.49	34.67	42.41	51.78	56.86	61.48	61.78	65.88	14	58
2022	5.24	6.38	17.62	23.39	31.23	32.85	38.65	43.43	43.93	46.06	48.89	50.79	44	28
2023	3.29	5.18	10.21	15.90	17.58	22.23	28.81	32.10	35.53	36.39	39.33	46.43	59	14
<b>2024</b>	<b>5.63</b>	<b>9.25</b>	<b>13.95</b>	<b>17.56</b>	<b>26.67</b>	<b>29.29</b>								

**Deviation from the Average Accumulation**

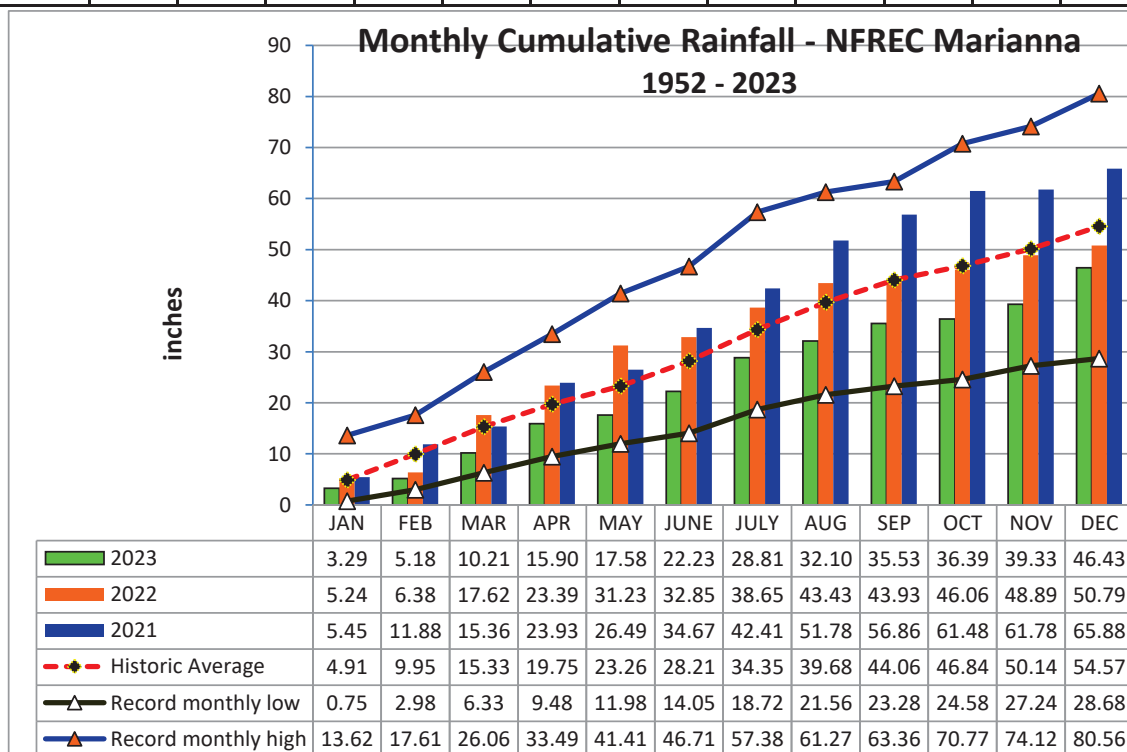
Inches	0.72	-0.70	-1.38	-2.19	3.41	1.08								
--------	------	-------	-------	-------	------	------	--	--	--	--	--	--	--	--

**Average Accumulation, 1952-2023**

Inches	4.91	9.95	15.33	19.75	23.26	28.21	34.35	39.68	44.06	46.84	50.14	54.57
--------	------	------	-------	-------	-------	-------	-------	-------	-------	-------	-------	-------

**Record High/Low Accumulation**

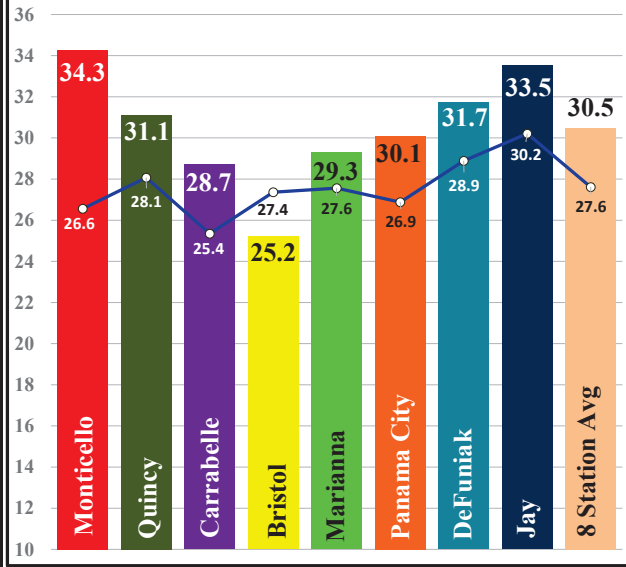
<b>LOW</b>	<b>0.75</b>	<b>2.98</b>	<b>6.33</b>	<b>9.48</b>	<b>11.98</b>	<b>14.05</b>	<b>18.72</b>	<b>21.56</b>	<b>23.28</b>	<b>24.58</b>	<b>27.24</b>	<b>28.68</b>
<b>HIGH</b>	<b>13.62</b>	<b>17.61</b>	<b>26.06</b>	<b>33.49</b>	<b>41.41</b>	<b>46.71</b>	<b>57.38</b>	<b>61.27</b>	<b>63.36</b>	<b>70.77</b>	<b>74.12</b>	<b>80.56</b>



## 2024 Panhandle UF/IFAS FAWN Weather Summary

FAWN Station	Data	Jan	Feb	Mar	Apr	May	June	Total
Monticello	Rain	3.5	1.9	6.9	11.3	8.7	2.0	34.3
	Hist Avg	4.2	4.2	4.9	3.7	3.8	5.8	26.6
	Deviation	-0.7	-2.3	2.0	7.7	4.9	-3.8	7.7
Quincy	Rain	4.3	3.2	6.7	4.3	8.2	4.3	31.1
	Hist Avg	4.5	4.5	5.3	4.1	4.1	5.6	28.1
	Deviation	-0.2	-1.3	1.4	0.3	4.1	-1.3	3.1
Carrabelle	Rain	5.7	2.7	7.3	4.8	4.2	4.0	28.7
	Hist Avg	3.9	4.0	4.7	3.7	3.6	5.6	25.4
	Deviation	1.8	-1.2	2.7	1.2	0.7	-1.7	3.4
Bristol	Rain	4.5	2.7	6.0	3.5	5.3	3.3	25.2
	Hist Avg	4.2	4.3	5.0	4.0	3.9	5.9	27.4
	Deviation	0.2	-1.7	0.9	-0.4	1.4	-2.6	-2.2
Marianna	Rain	5.6	3.6	4.7	3.6	9.1	2.6	29.3
	Hist Avg	4.6	4.7	5.5	4.1	3.8	5.0	27.6
	Deviation	1.1	-1.1	-0.8	-0.5	5.3	-2.3	1.7
Panama City	Rain	5.3	4.2	2.8	3.7	8.1	6.0	30.1
	Hist Avg	4.4	4.5	5.3	4.0	3.4	5.3	26.9
	Deviation	1.0	-0.4	-2.5	-0.4	4.7	0.8	3.2
DeFuniak	Rain	8.2	4.6	4.0	3.7	6.3	5.0	31.7
	Hist Avg	4.8	5.0	5.7	4.4	3.8	5.2	28.9
	Deviation	3.4	-0.4	-1.7	-0.7	2.5	-0.3	2.8
Jay	Rain	6.6	1.4	5.9	4.2	9.5	6.0	33.5
	Hist Avg	4.8	5.1	5.9	4.6	4.1	5.7	30.2
	Deviation	1.8	-3.7	0.0	-0.4	5.3	0.3	3.3
<b>8 Station Average</b>		<b>5.5</b>	<b>3.0</b>	<b>5.5</b>	<b>4.9</b>	<b>7.4</b>	<b>4.1</b>	<b>30.5</b>
<b>8 Station Historic Average*</b>		<b>4.4</b>	<b>4.5</b>	<b>5.3</b>	<b>4.1</b>	<b>3.8</b>	<b>5.5</b>	<b>27.6</b>
<b>Deviation from Avg</b>		<b>1.1</b>	<b>-1.5</b>	<b>0.2</b>	<b>0.8</b>	<b>3.6</b>	<b>-1.4</b>	<b>2.9</b>

### Panhandle FAWN Station 2024 Rainfall vs Historic Average



\*NOAA County Historic Averages from 1901-2000

<https://www.ncei.noaa.gov/access/monitoring/climate-at-a-glance/county/rankings>

FAWN Station	Monticello	Quincy	Carrabelle	Bristol	Marianna	Panama City	DeFuniak	Jay	Average
Rainfall	34.3	31.1	28.7	25.2	29.3	30.1	31.7	33.5	30.5
Historic Average	26.6	28.1	25.4	27.4	27.6	26.9	28.9	30.2	27.6