



2025 Seed Update

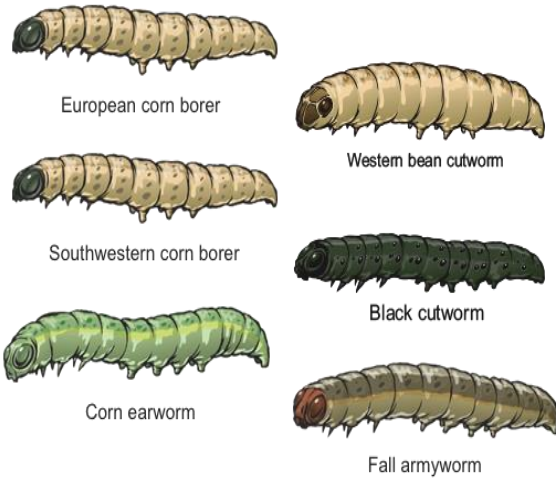
Gib Ellis- Field Agronomist



PowerCore® Enlist® Trait



Broad-spectrum, above-ground control with herbicide tolerance



Trait overview

- Exceptional broad-spectrum protection against above-ground pests
- Stacked with the Enlist® corn trait for multiple modes of action against tough weeds

By the numbers

- Trait is licensed to more than 85 seed companies in the U.S. and Canada, giving farmers many genetic options for accessing this important new technology

Farmer benefits

- Long-lasting insect control against black cutworm, fall armyworm, European and southwestern corn borers, and corn earworm
- Herbicide flexibility with the Enlist® weed control system, which offers tolerance to 2,4-D choline, FOPs and glyphosate
- In North America, PowerCore® Enlist® RA corn provides convenient integrated refuge
- Enlist weed control system provides a whole-farm solution across corn, soybean and cotton acres
- Available in Corteva Agriscience genetics with best-in-class yield potential

Primary Pest Controlled	PowerCore®	Genuity® VT Double PRO®
Black cutworm	◇	
Corn earworm	◇◇	◇◇
European corn borer	◇◇◇	◇◇
Fall armyworm	◇◇◇	◇◇
Southwestern corn borer	◇◇◇	◇◇
Sugarcane borer	◇◇◇	◇◇
Western bean cutworm	◇	
Separate refuge – Corn Belt	5%	5%
Separate refuge – cotton-growing areas	20%	20%

of diamonds indicates protection level



Key Crop
Corn



Regions
NA, LA



Sustainability Benefits

Biodiversity and Habitat Health	Food Safety and Availability
Water, Air and Soil Stewardship	Sustainable Production and Land Use



PowerCore Enlist & PowerCore Ultra Enlist

Herbicide flexibility with tolerance to 2,4-D choline in **Enlist** herbicides, **glyphosate**, **glufosinate** and **FOP herbicides**

PowerCore® Enlist® technology includes a combination of three distinct active Bt proteins (multiple modes of action).
- *Herculex and VT DoublePro*

PowerCore® Ultra Enlist® adds the **Vip3A** protein for protection against occasional ear feeding pests like corn earworm and western bean cutworm

New Nomenclature



Structured Refuge

PW

Non-Blended

PowerCore® Enlist®



Refuge Advanced

PC

5% Blended



PowerCore Ultra® Enlist®





Pioneer Southern Breeding Direction

An increased focus on southern breeding efforts announced January 2023

- Our largest resource investment ever dedicated to southern corn breeding
- One evaluation zone dedicated only to southern breeding efforts
- 9 breeding scientists focused on 113-118 day breeding, with 2 more working only on 115-118 day products.

New breeding tools to streamline development

- Introduction of AI for predictive analytics
- Introducing more variation and stress in testing
- 3-4 year reduction in hybrid development time

Targets of the Breeding Shift

Yield Stability

- Hybrids that power through our highly variable southern yield environments
- Tough acre performance that doesn't sacrifice top-end potential

Agronomics

- Shortening plant height and maintaining a consistent ear height
- Improving on our root and stalk strength
- Late season plant health and standability

Disease

- Improving on our overall disease package
- Primary focus being Southern Rust

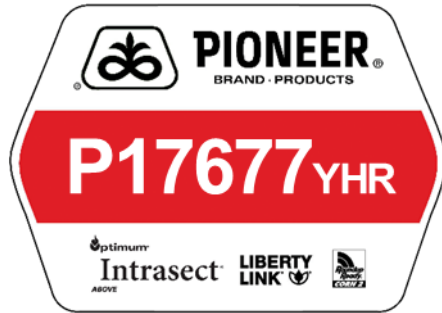


Recent Releases



2024

- 113 Day
- Tough acre stability hybrid, with excellent top end
- Great performance and consistency trough 2024
- Short statured and strong agronomics
- Excellent drought tolerance



2023

- 117 Day
- Fuller season stability hybrid with excellent top end
- Performs well on tougher dryland and irrigated acres
 - Very sound agronomics and excellent season plant health



2025

- 118 Day
- Top end performer, yet stable in low to high yield environments
- Highest yielding 118 R5 in NA testing
- More potential than 17677
- Plant it and go- large kernel size



2025

- 118 Day
- High yield player
- Excellent late season plant health with above average disease package
- Flex potential allows more versatility in lower yielding environments
 - Silage option



SERIES
SOYBEANS



What's New With Z-Series

New elite genetics only found in a Pioneer bag.

66% US acres in Enlist system

Expanded germplasm that is filling portfolio gaps

- MG4 Bolt/STS
- MG4 RKN
- More MG5+

Performance over current A-series



Current Z-Series E3 offerings

Late MG3 E3 – 4

MG4 E3 – 10

- 2 Bolt
- 1 STS
- 2 RKN

MG5+ E3 – 7

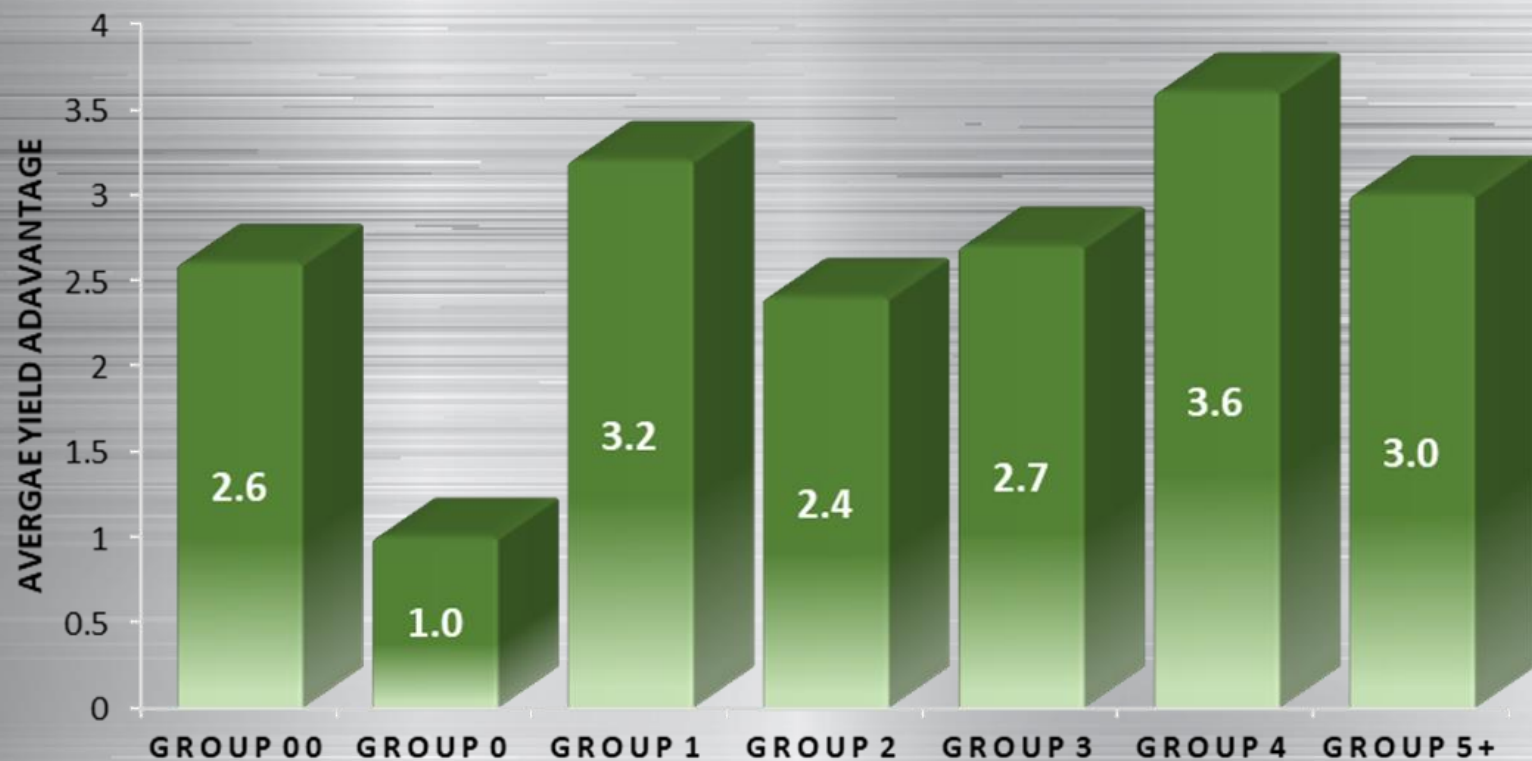


PIONEER®



SERIES SOYBEANS

AVERAGE Z-SERIES YIELD ADVANTAGE OVER A-SERIES





E3/STS

Performance advantage
over 42A84E

Shorter height with more
sprawling canopy

RKN Resistant



E3/Bolt

Excellent vigor and
aggressive growth habit

Tall and wide

Ideal double crop bean
behind wheat treated with
finesse



E3

Current world record holder

Reserve for higher yielding
more intensely managed
acres

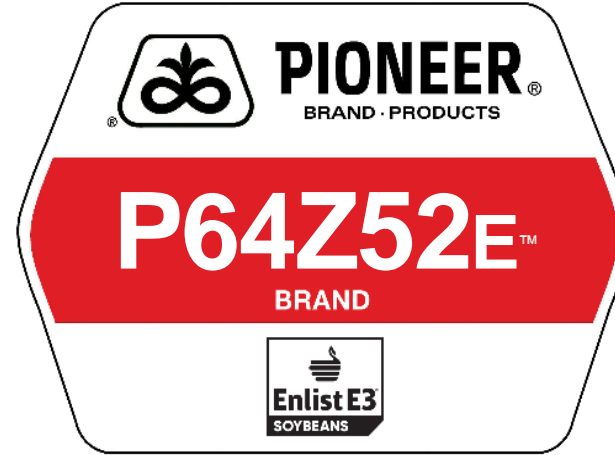
Shorter statured

Avoid PPO's





- **NEW** Above average resistance to iron deficiency chlorosis
- Good option for poorly drained soils
- Resistant to root-knot nematodes, and very good tolerance to charcoal rot
- Average height with wide canopy



- Resistance to root-knot nematodes with a tawny color
- Very good tolerance to SDS and charcoal rot
- Good option for poorly drained soils
- May require a fungicide application to control frogeye leaf spot



- **NEW** tawny determinate with excellent standability
- RKN and Stem Canker resistant with average Charcoal Rot tolerance
- Shorter stature with wide canopy
- May require a fungicide application to control frogeye leaf spot



Southern Bred
FOR THE
Southern Grower

